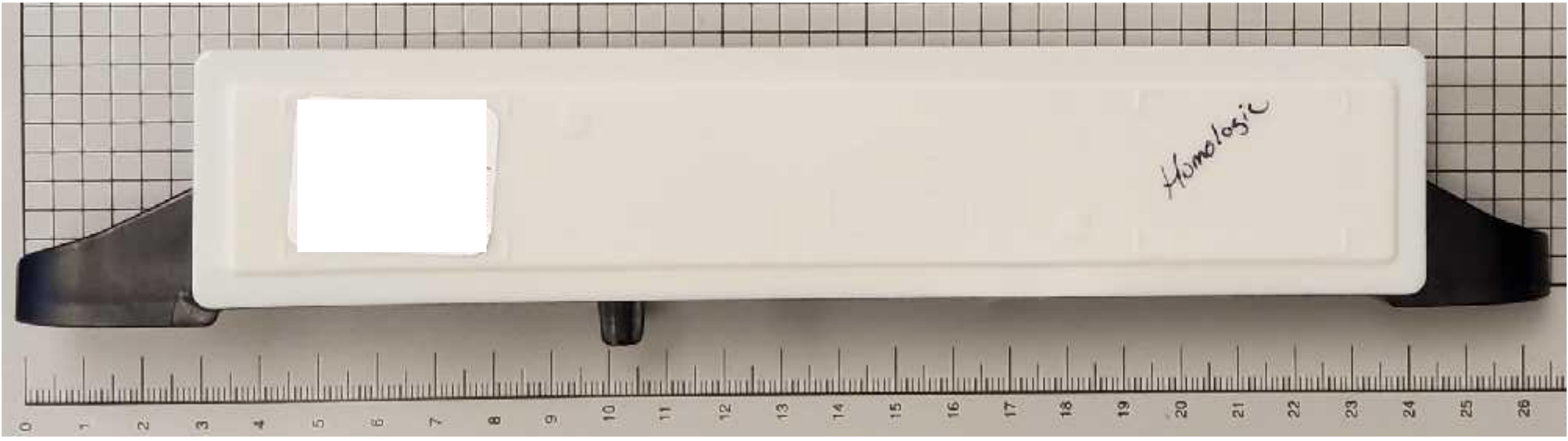


USER DEFINED

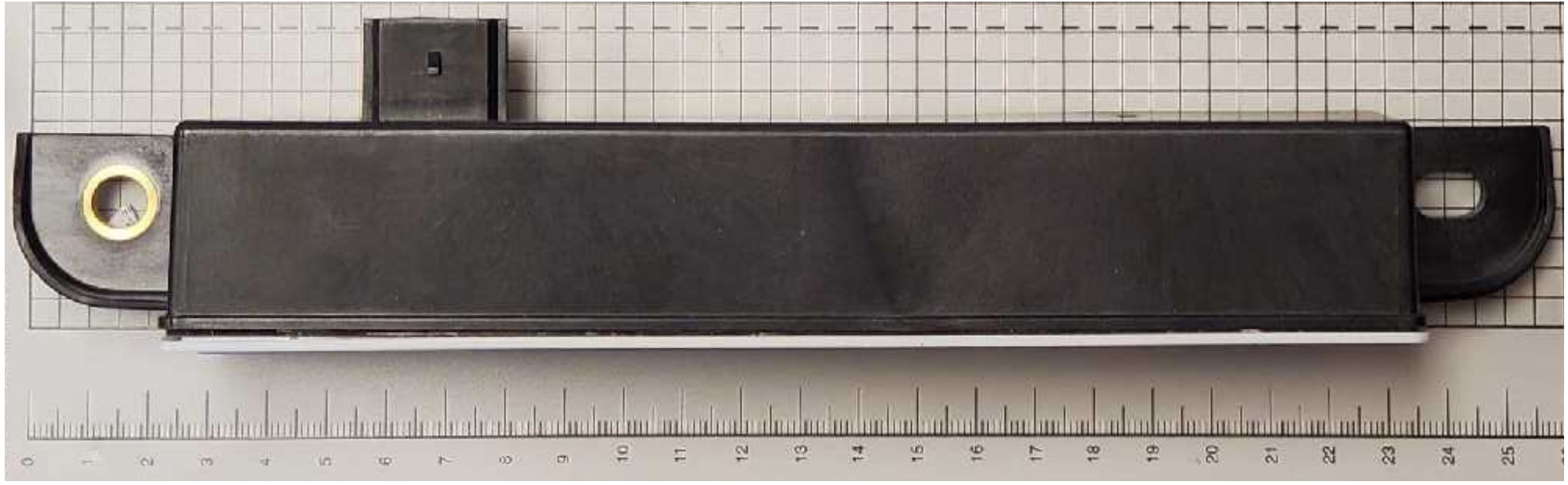
0 1 2 3 4 5 6 7 8 9 10 11 12 13 14 15 16 17 18 19 20 21 22 23 24 25 26 27

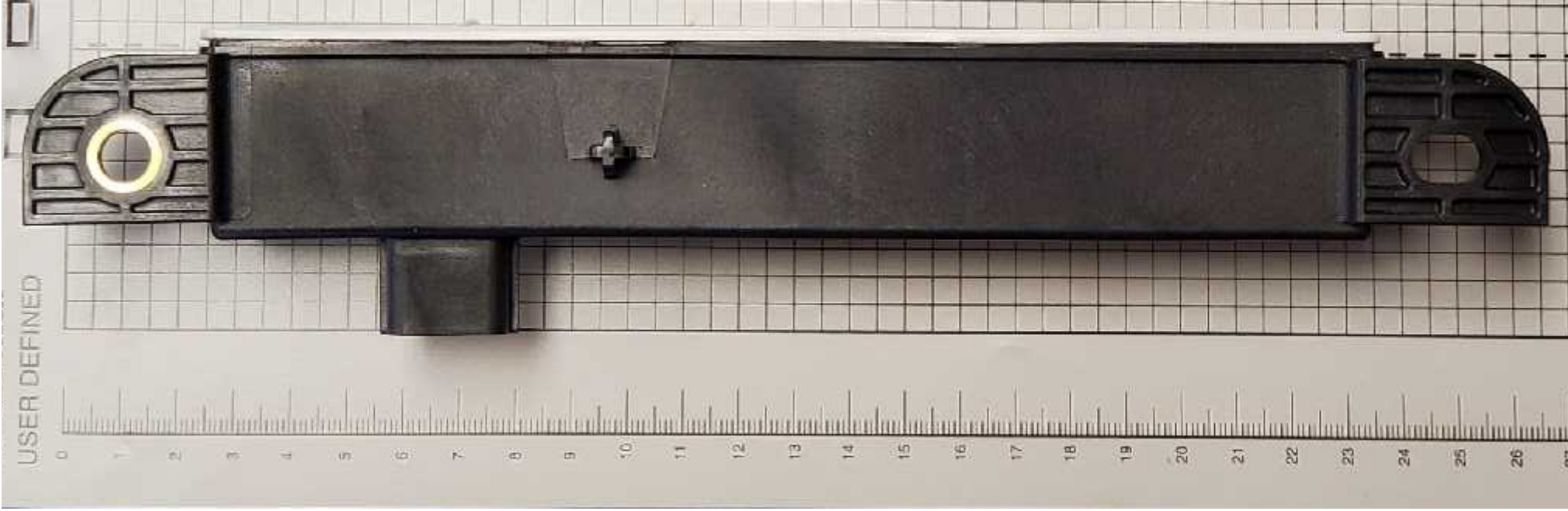




Homologic









FoMoCo

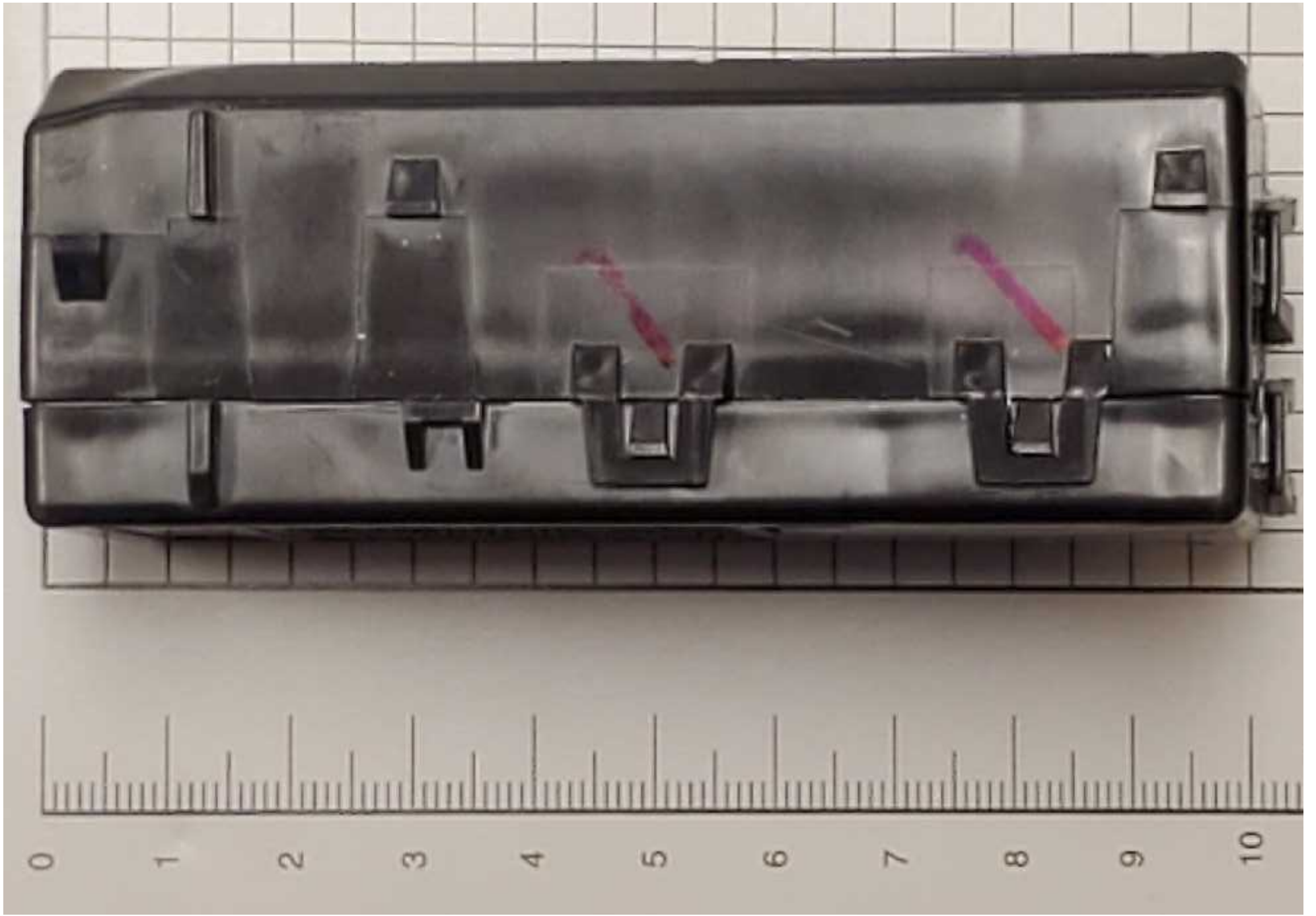
-15K619-

>PP-TD20<

0 1 2 3 4 5 6 7 8 9 10

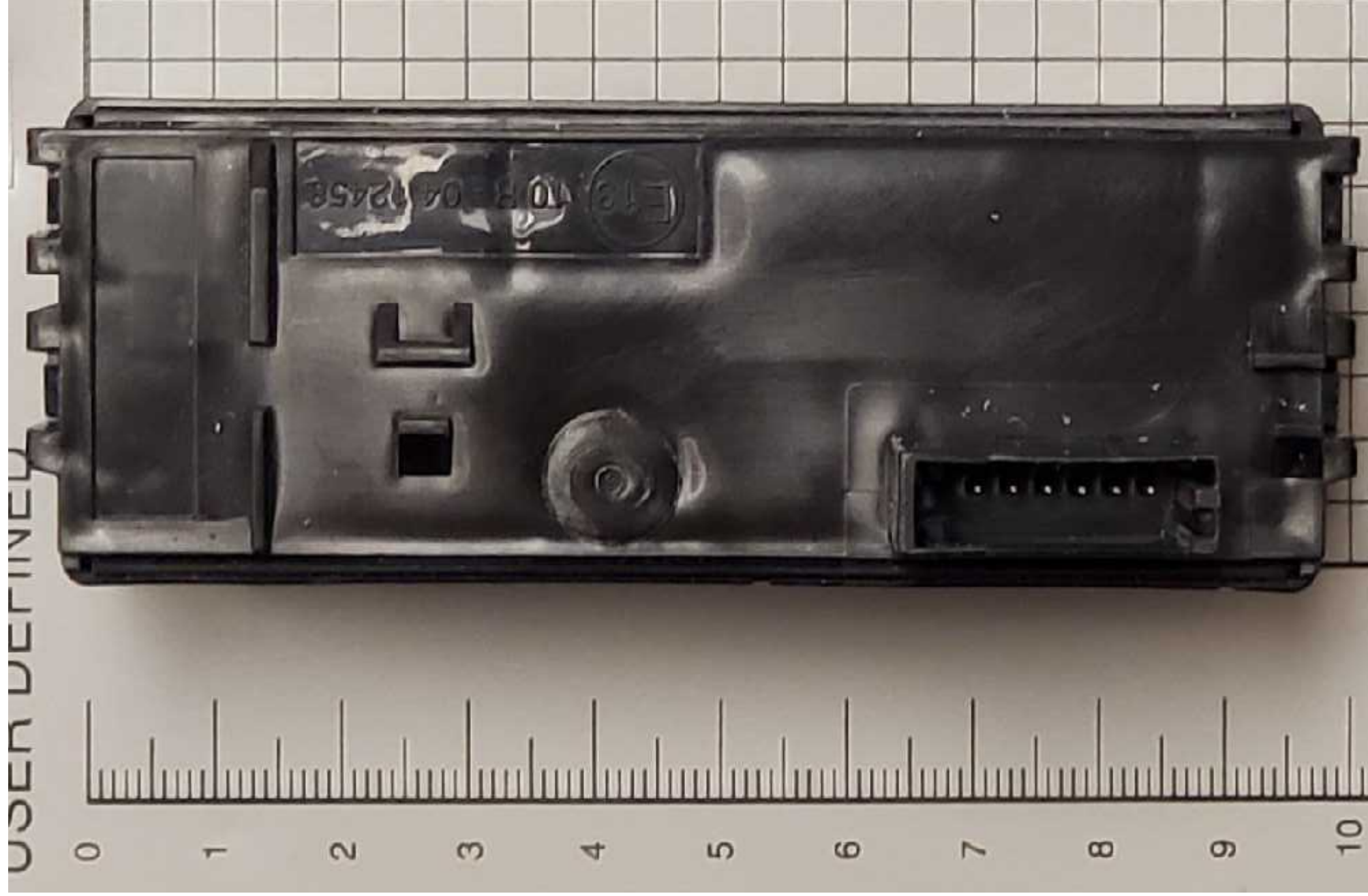
This device complies with Part 15 of  
the FCC rules and with RSS-210 of the  
Industry Canada. Operation is subject  
to the following two conditions: (1)  
This device may not cause harmful  
interference, and (2) This device must  
accept any interference that may cause  
undesired operation.







USER DEFINED



0 1 2 3 4 5 6 7 8 9 10