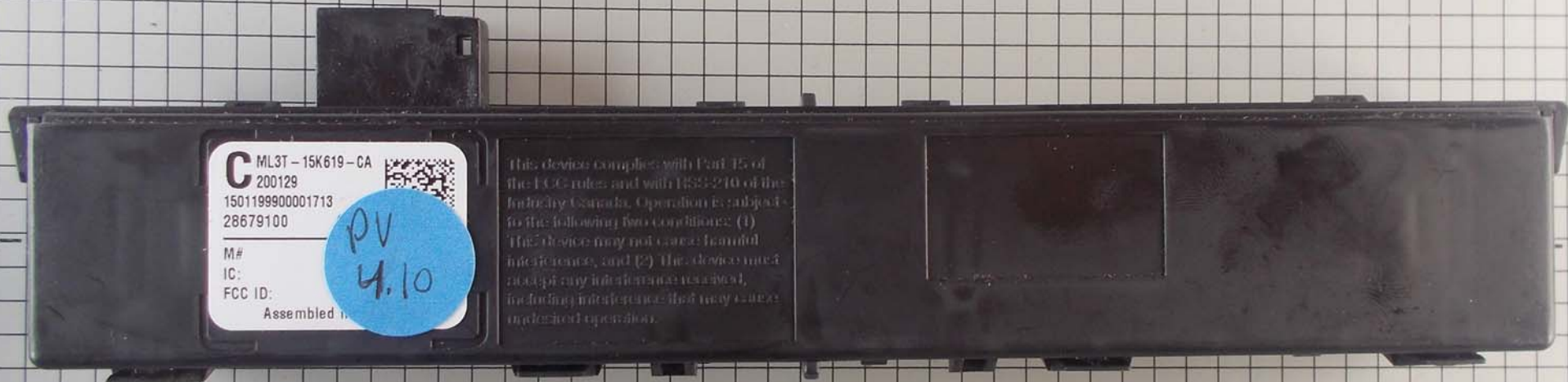


3 4 5 6 7 8 9 10 11 12 13 14 15 16 17 18 19 20 21 22 23 24 25 26 27 28



C ML3T-15K619-CA
200129
150119990001713
28679100

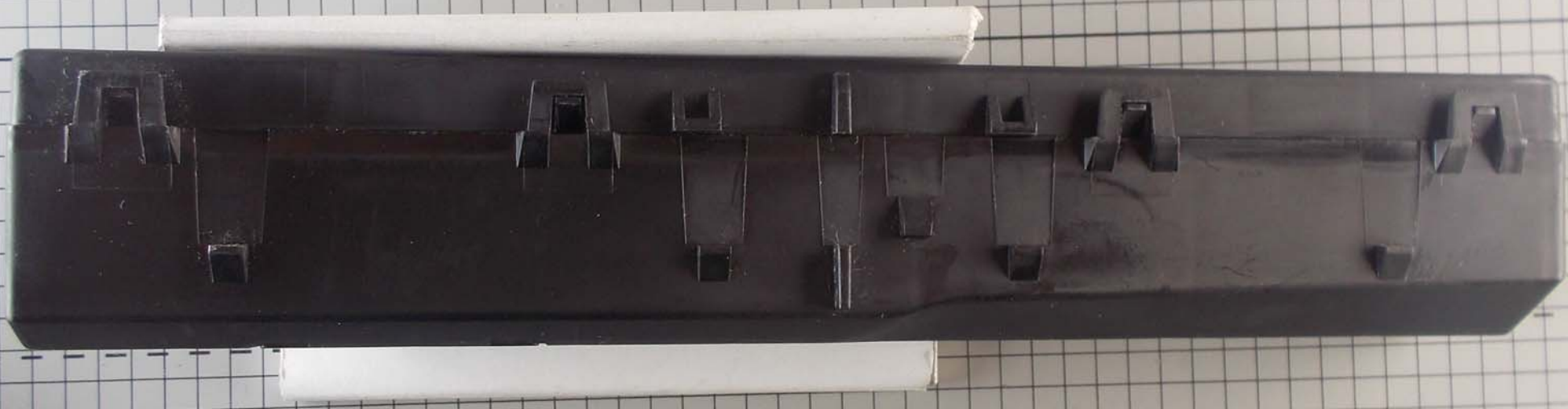
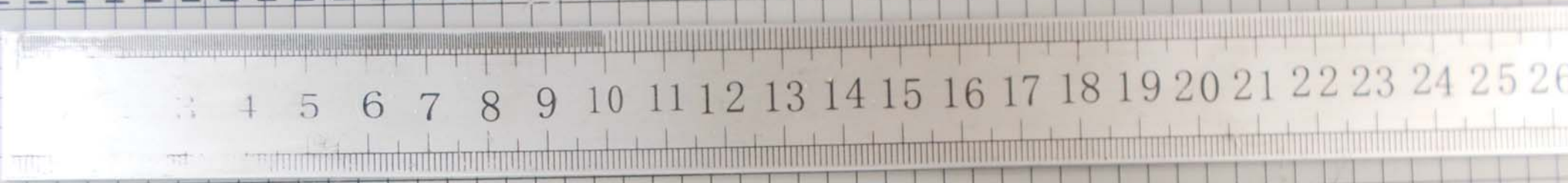


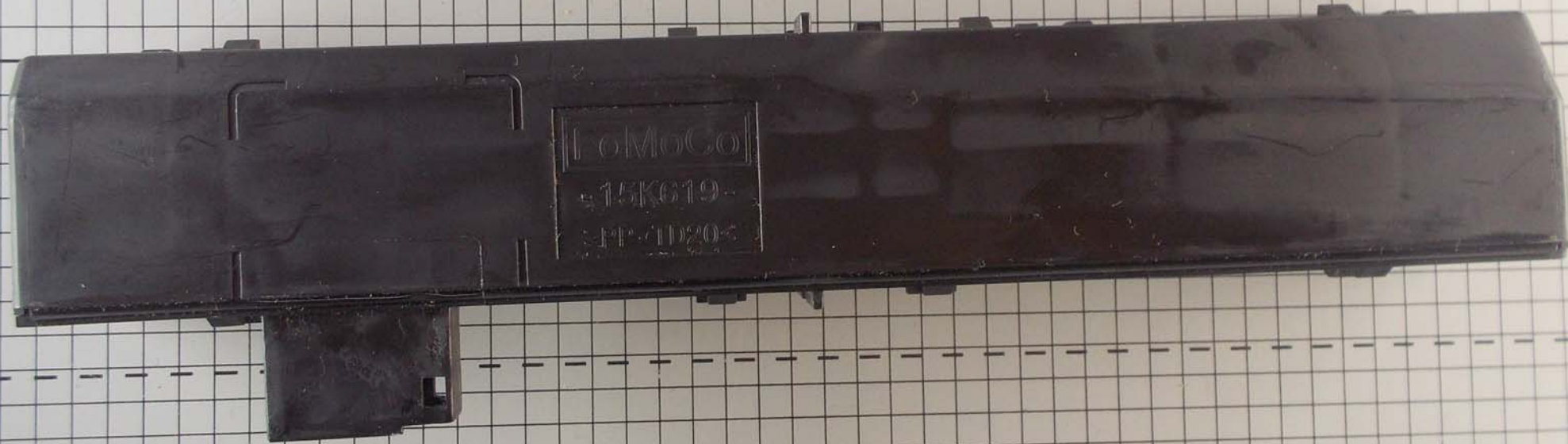
PV
4.10

M#
IC:
FCC ID:

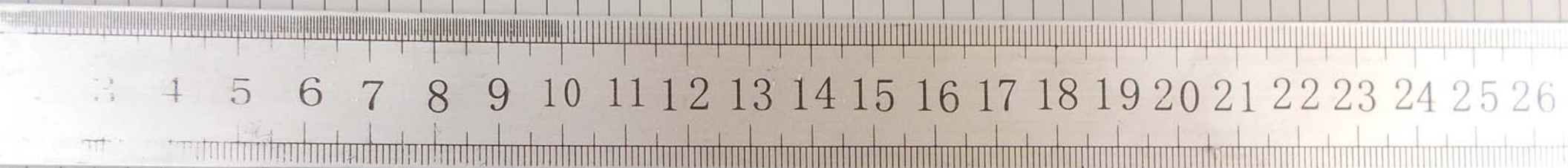
Assembled in

This device complies with Part 15 of the FCC rules and with RSS-210 of the Industry Canada. Operation is subject to the following two conditions: (1) This device may not cause harmful interference, and (2) this device must accept any interference received, including interference that may cause undesired operation.

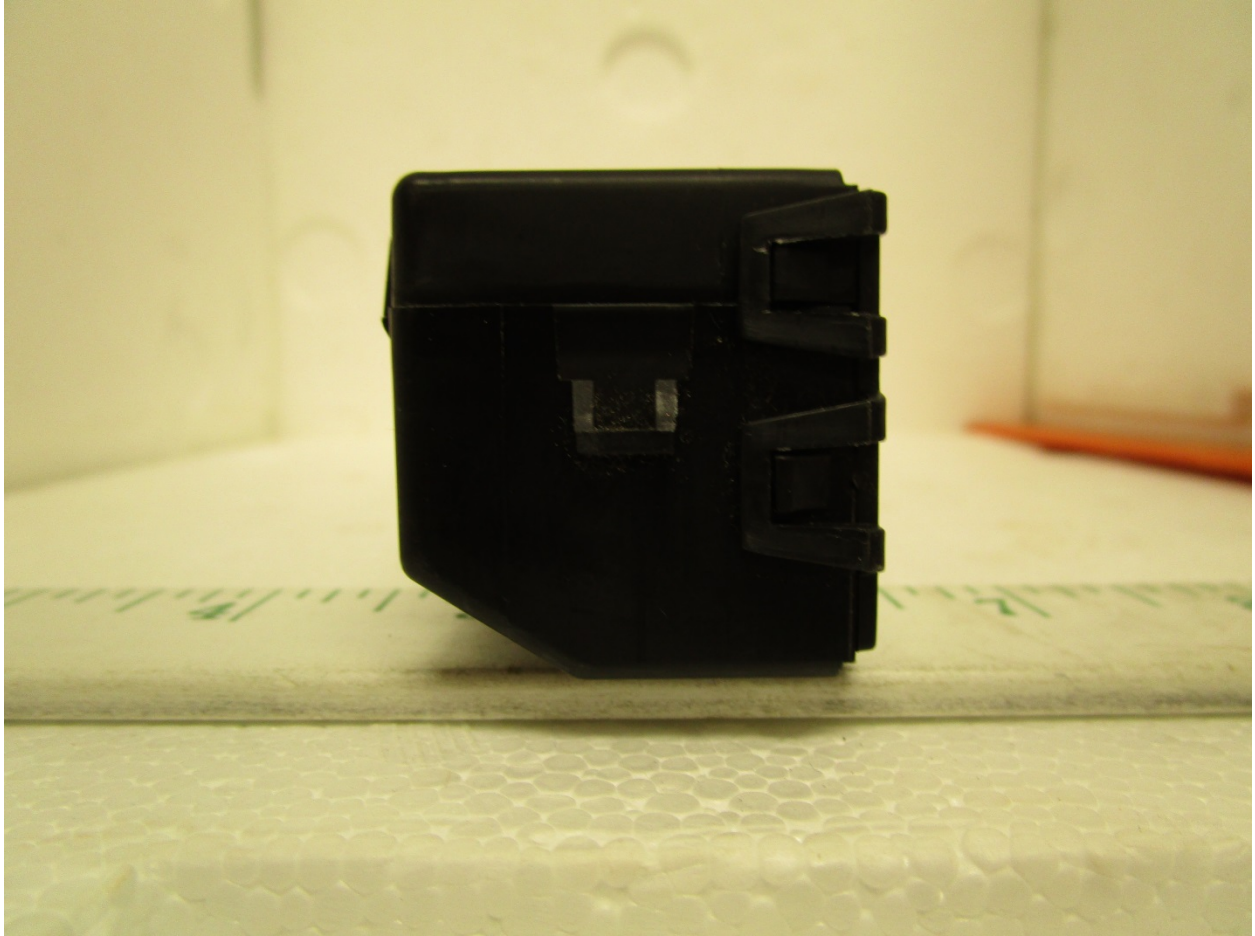




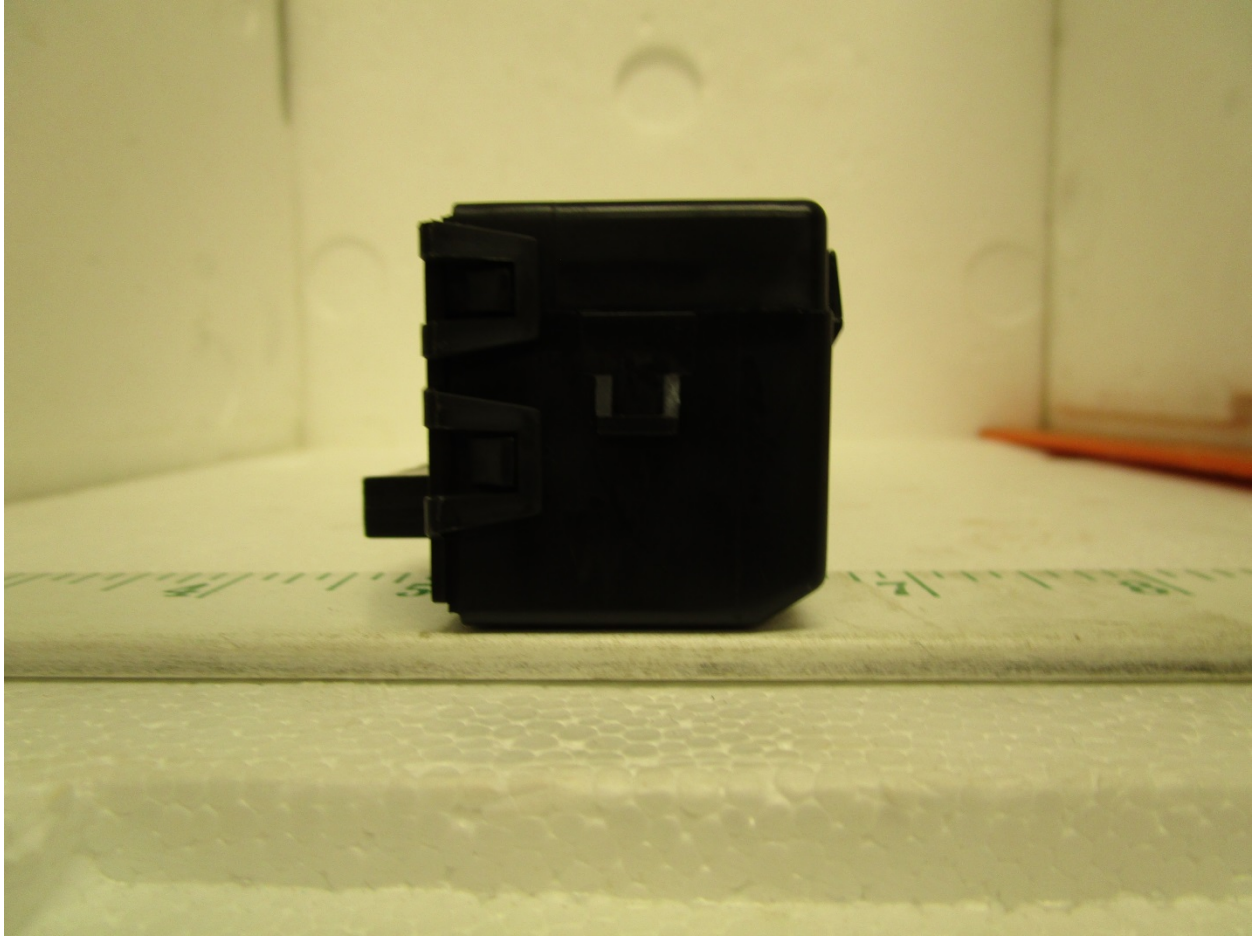
F o M o C o
15K619
PP-1D20



1011-0312459



END VIEW



OTHER END VIEW