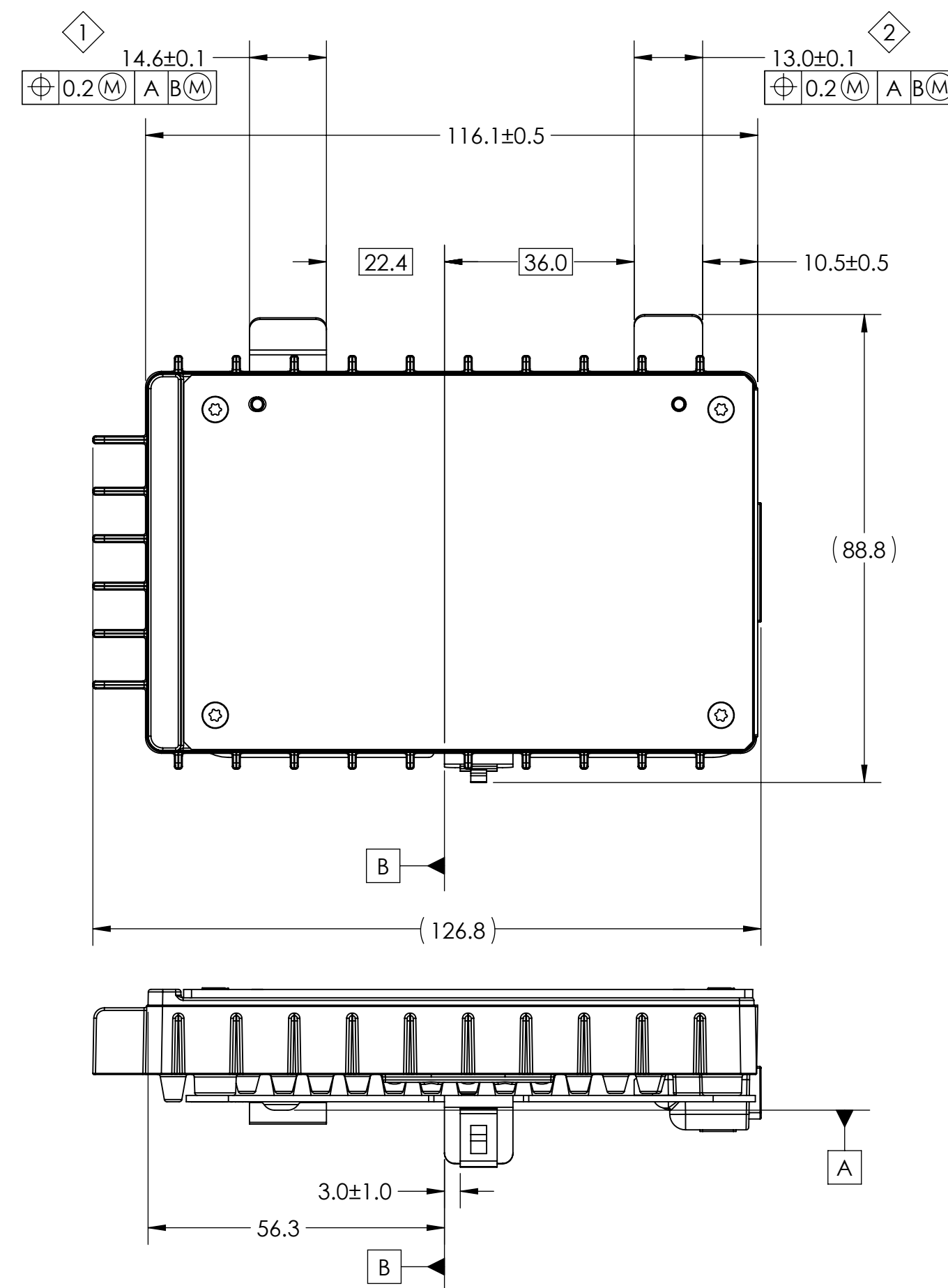
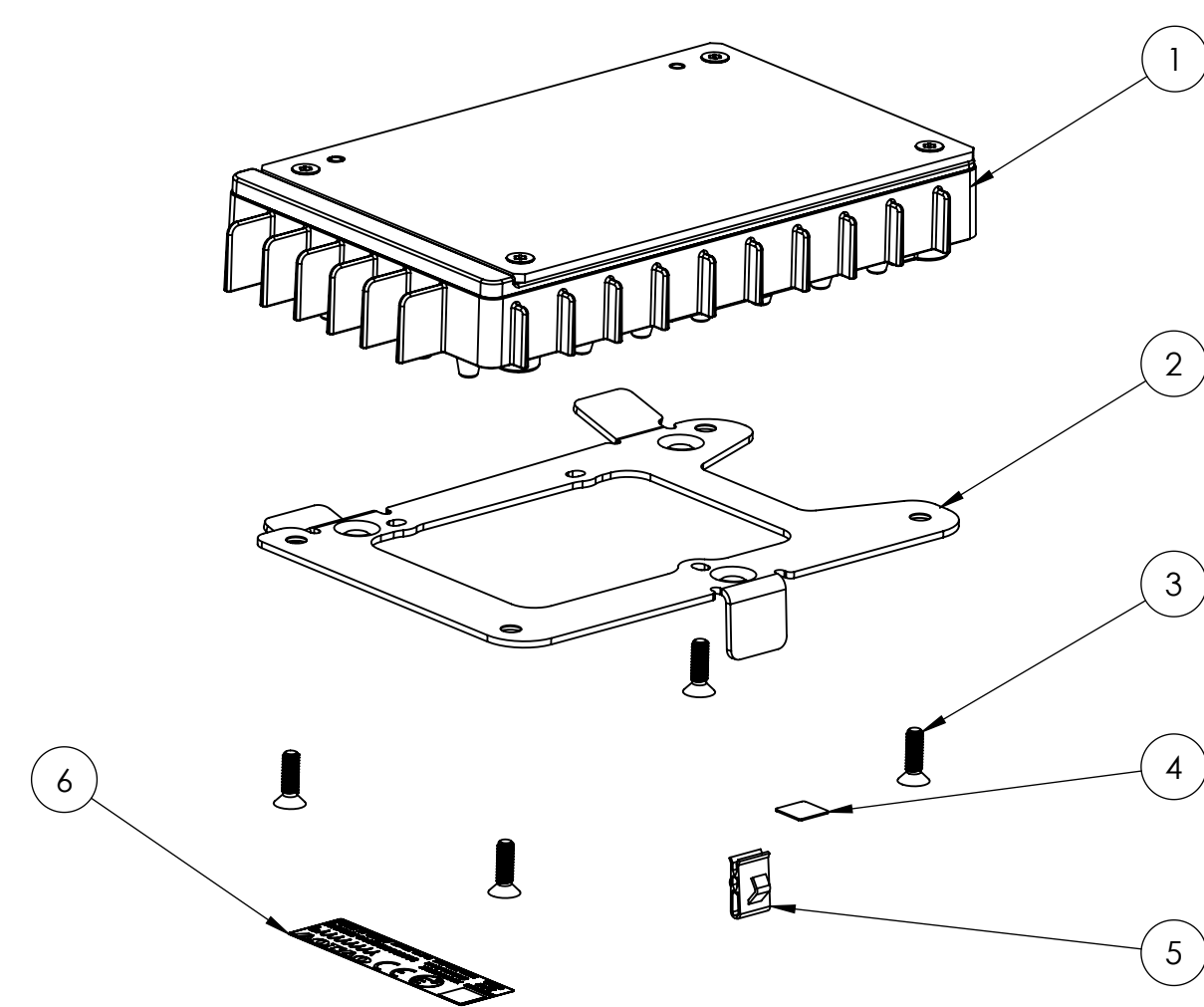


| DESIGNATED CHARACTERISTICS | | | KPC | | |
|----------------------------|----------------------------|-----------------------------------|------|-----|-----|
| 4 | LAST NUMBER USED | FIT/FUNCTION | ◇ FF | | |
| 4 | TOTAL ON DRAWING | | | | |
| KPC NO | DESCRIPTION | RATIONALE | ZONE | SHT | PTS |
| 1 | MODULE TO CUSTOMER CONSOLE | CUSTOMER INTERFACE CHARACTERISTIC | E-6 | 1 | 1 |
| 2 | MODULE TO CUSTOMER CONSOLE | CUSTOMER INTERFACE CHARACTERISTIC | E-4 | 1 | 1 |
| 3 | LABEL INFORMATION | CUSTOMER REQUIREMENTS | A-7 | 1 | 1 |
| 4 | LABEL INFORMATION | CUSTOMER REQUIREMENTS | B-7 | 1 | 1 |

| ITEM NO. | SUPPLIER PART NUMBER | DELPHI PART NUMBER | VOLVO P/N | PART NAME | MATERIAL | FINISH HEAT/TREATMENT | QTY. |
|----------|----------------------|--------------------|-----------|--------------------------------|-----------|-----------------------|------|
| 1 | > | 35052528 | PIA | WIRELESS CHARGER SUB-ASM-VOLVO | N/A | N/A | 1 |
| 2 | 00-046-005096 | 33323636 | PIA | BRACKET-VOLVO | STEEL | ZINC | 1 |
| 3 | 00-002-005069 | 33323637 | PIA | LABEL | STEEL | A2K DIN EN ISO 4042 | 4 |
| 4 | 00-004-005244 | 33259022 | PIA | LABEL-MFG INFORMATION | POLYESTER | N/A | 1 |
| 5 | 00-046-005095 | 33323639 | PIA | MOUNTING CLIP-VOLVO | STEEL | PHOSPHATE/OILED | 1 |
| 6 | 00-004-005432 | 33323638 | PIA | LABEL-VOLVO WIRELESS CHARGER | POLYESTER | N/A | 1 |
| 7 | > | 35114400 | N/A | TEST PLAN VOLVO-V316 | N/A | N/A | N/A |

| REVISION HISTORY | | | | | |
|------------------|------|-------------------------|-----------|----------|-----------|
| REV. | ZONE | DESCRIPTION | AUTHORITY | DATE | DRAWN BY |
| A | | RELEASED FOR PRODUCTION | 002008 | 17JL2017 | B.CHAPMAN |



| CONNECTOR PINOUT | |
|------------------|----------|
| PIN | FUNCTION |
| 1 | BAT+ |
| 2 | SPARE |
| 3 | SPARE |
| 4 | SPARE |
| 5 | BAT- |
| 6 | LIN |
| 7 | SPARE |
| 8 | SPARE |

NOTES:

UNLESS OTHERWISE SPECIFIED:

MAXIMUM ALLOWABLE ASSEMBLY PCB STRAIN SHALL BE 400 µε.

CLIP NOT ALLOWED TO COME LOOSE DURING TRANSPORTATION AND DURING REMOVAL FROM CONSOLE.

THREE DIMENSIONAL CAD IS MASTER.

DIMENSIONS NOT SHOWN IN THE DRAWING SHALL BE EXTRACTED FROM 3D CAD.

OTHER THAN UNITED STATES MANUFACTURED COMPONENTS THE COUNTRY OF ORIGIN MUST BE MARKED IN ENGLISH.

ENGINEERING APPROVAL OF PRODUCTION SAMPLES FOR EACH SUPPLIER REQUIRED PRIOR TO AUTHORIZATION OF INITIAL PRODUCTION.

CHANGES TO DESIGN, COMPOSITION OR PROCESSING OF THE PART PREVIOUSLY APPROVED FOR PRODUCTION REQUIRE PRIOR APPROVAL FROM VOLVO ENGINEERING.

DESIGN CENTER APPROVAL OF APPEARANCE FEATURES REQUIRED PRIOR TO SUBMISSION OF PRODUCTION SAMPLES.

PART MUST BE FREE OF BURRS, FLASH AND SHARP EDGES THAT MAY AFFECT THE FUNCTION. SAFE HANDLING, INSTALLATION OR REMOVAL OF THE PART.

FOR THE PURPOSES OF THE GEOMETRIC TOLERANCING, ALL DIMENSIONAL INFORMATION CONTAINED IN THE CAD MODEL IS BASIC (THEORETICAL).

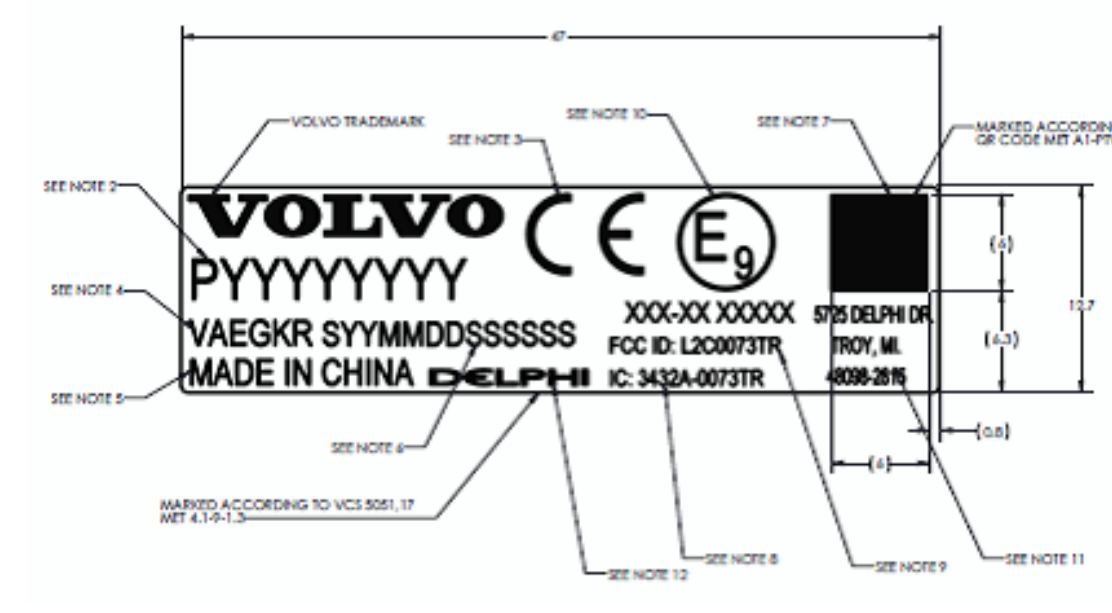
SCREW TORQUE FOR BRACKET PAN HEAD SCREWS 0.9 +/- .3 N*m

WEIGHT OF MODULE: 269g

4 MARKED ACCORDING TO VCS 5051.4 QR CODE MET A1-PTV

3 MARKED ACCORDING TO VCS 5051.17 MET 4.1-9-1,3

| VOLVO EOL PROGRAMMING | | |
|-----------------------|--|------------------------------|
| ITEM | DELPHI DESCRIPTION | HUMAN READABLE LABEL CONTENT |
| 1 | DELPHI FINAL ASSEMBLY PART NUMBER | 35111281 |
| 2 | CUSTOMER PART FINAL ASSEMBLY PART NUMBER | 31450884 |
| 3 | SUPPLIER CODE | AEGKR |
| 4 | SERIAL NUMBER | |
| 5 | COUNTRY OF MANUFACTURE | MADE IN CHINA |



| | | | | | | |
|---|---|--|--|--|--|---|
| DELPHI DELPHI CORPORATION COPYRIGHT 2000 DELPHI CORPORATION AND/OR ITS AFFILIATES. ALL RIGHTS RESERVED. THIS DRAWING IS THE PROPERTY OF DELPHI CORPORATION AND CONTAINS DELPHI CONFIDENTIAL INFORMATION. THE REPRODUCTION, DISTRIBUTION AND UTILIZATION OF THIS DOCUMENT OR ITS RELATED CAD DATA, AS WELL AS COMMUNICATION OF ANY CONTENT TO OTHERS, WITHOUT EXPRESS AUTHORIZATION, IS PROHIBITED. SUBSTANCES OF CONCERN AND RECYCLED CONTENT PER DELPHI 1094901 | DIMENSIONS ARE IN MILLIMETERS TOLERANCES: 0 - 8 = ± 0.1 8 - 30 = ± 0.2 30 - 120 = ± 0.3 120 - 400 = ± 0.5 ANGULAR ± 0.5 DEGREES INTERPRET GEOMETRIC TOLERANCING PER ASME Y14.5M-1994 | UNLESS OTHERWISE SPECIFIED: FINISH: SEE NOTE DO NOT SCALE DRAWING USE CAD DATA | DRAWN BY: B.CHAPMAN CHECKED BY: N/A ENG APPR: J.MECCA MFG APPR: N/A | NAME: N/A DATE: 09FE2017 N/A N/A N/A | CUSTOMER PART NUMBER: 31450884 TITLE: WPC- VOLVO WIRELESS CHARGER FINAL ASSEMBLY SIZE: D DWG. NO.: 35111281 SCALE: 1:1 | DATE: 09FE2017 N/A N/A N/A REV: A WEIGHT: 269g SHEET 1 OF 1 |
| | THIRD ANGLE PROJECTION | 3D CAD AVAILABLE | | | | |