

ITEM LIST			
ITEM	PART NO.	DESCRIPTION	QTY
1	28362005	LABEL-BLANK	1
2	00088829	RIBN 2.36 (59.9MM)	1

DESIGNATED CHARACTERISTICS				OCI	KPC		
0	LAST NO USED	K OR Q IN SYMBOL INDICATES CHECKPOINT	FIT/FUNCTION	C1	FF		
0	TOTAL ON DRAWING						
KPC	OCI	SAFETY/COMPLIANCE		ZONE	SH	PTS	
NO	NO	TYPE	DESCRIPTION	RATIONALE	ZONE	SH	PTS

DWG STATUS				REVISION HISTORY				AUTH	
DATE	STG	REV	N/P	CHG	ZONE			DR	APVD
05FE18		A				RELEASED-PROTOTYPE		108063	EM
								1079	SL
									TT



REF: FCC IDENTIFICATION NO'S

ADVANCED PRINT FOR REFERENCE ONLY
2018/02/05

FCC LABEL INFORMATION	
VARIABLE	VALUE
Model/FCC ID	SEE PARENT ASSEMBLY DRAWING
IC	
CMIT ID	
TUV	
E-MARK	

UNLESS OTHERWISE SPECIFIED
THIS DOCUMENT IS IN ACCORDANCE WITH ASME Y14.5M-1994 AS AMENDED BY THE 0M GLOBAL DIMENSIONING AND TOLERANCING ADDENDUM - 2004.

ALL DIMENSIONS ARE IN MILLIMETERS
ZERO PLACE DECIMALS ±N/A
ONE PLACE DECIMALS ±N/A
TWO PLACE DECIMALS ±N/A

ANGLES ±N/A DEGREE

DELPHI	
COPYRIGHT 2012 DELPHI CORPORATION AND/OR ITS AFFILIATES. ALL RIGHTS RESERVED.	
THIS DRAWING IS THE PROPERTY OF DELPHI CORPORATION AND CONTAINS DELPHI CONFIDENTIAL INFORMATION. THE REPRODUCTION, DISTRIBUTION AND UTILIZATION OF THIS DOCUMENT OR ITS RELATED CAD DATA, AS WELL AS COMMUNICATION OF ANY CONTENT TO OTHERS, WITHOUT EXPRESS AUTHORIZATION, IS PROHIBITED.	
DR	ED MENASSAKA
APVD1	STEVE LIBURDI
APVD2	TERRENCE TAN
APVD3	
APVD4	
APVD5	
SUBSTANCES OF CONCERN AND RECYCLED CONTENT PER DELPHI 10949001	
MATERIAL	
N/A	
DRAWING NAME	
LABEL MAKE-FCC	
DRAWING NUMBER	
DK 320286	
SIZE	SCALE
A1	(5:1)
FRAME NO	SHEET NO
1 OF 1	1 OF 1
STG	REV
A	

- PRINTING - MINIMUM 2.0 mm KEEPOUT AROUND EXTERIOR OF LAB
2. DESCRIPTIVE FIELDS: REFER TO PARENT ASSEMBLY DRAWING
 3. LABEL BLANK AND RIBBON TO BE APPROVED BY DELPHI-E&S ENGINEERING
 4. LABEL DRAWING IS FOR REFERENCE ONLY

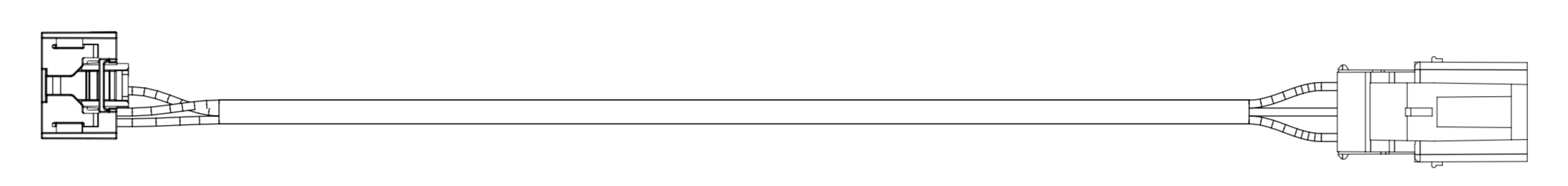
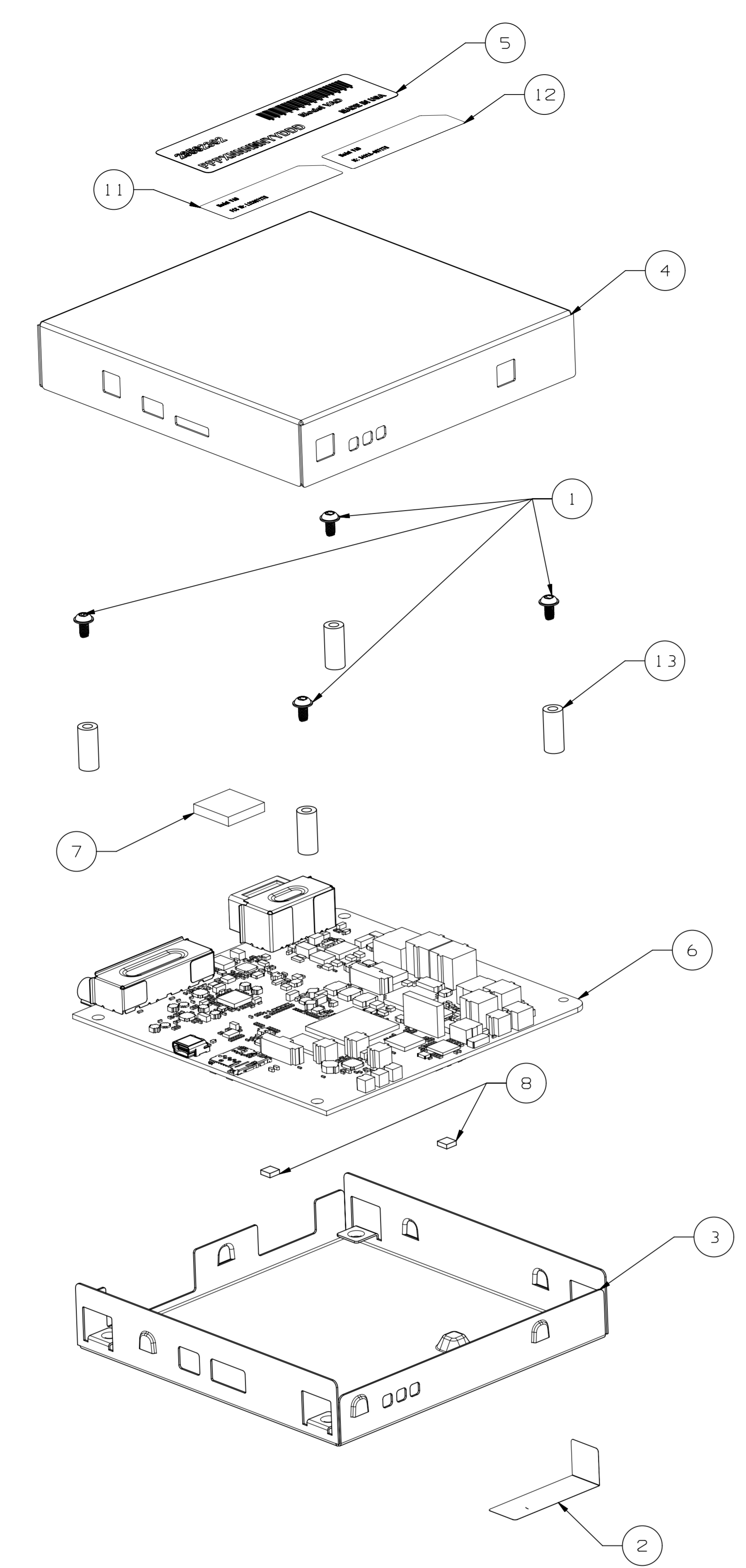
FIRST USED	DK 313639
REFERENCE	
REPLACES	N/A
REPLACED BY	28624183

THIRD ANGLE PROJECTION
DO NOT SCALE
USE MATH DATA
NX V11.0

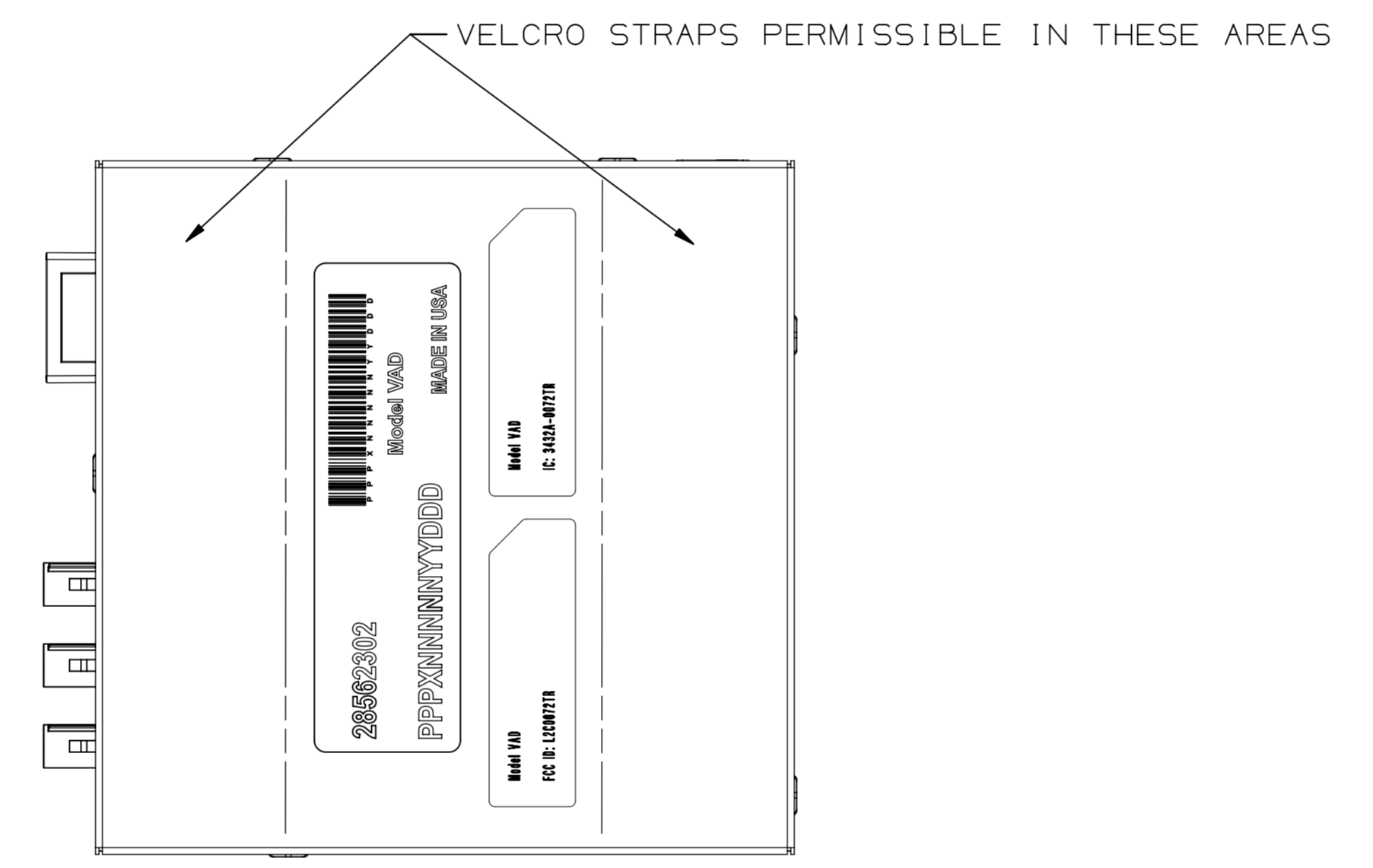
ITEM	PART NO.	DESCRIPTION	QTY
1	28259146	SCREW M3X0.5X6 TP RWH TT	4
2	28458036	LABEL SECURITY	2
3	DK 31 36 32	CASE-VAD V2X	1
4	DK 31 36 33	COVER-VAD V2X	1
5	DK 31 36 34	LABEL MAKE-END	1
6	DK 31 36 39	CIR BD ASM-CMP VAD V2X	1
7	DK 31 5 36 0	GASKET-USB	1
8	DK 31 5 36 1	PAD-THERMAL,GAP EQ2	2
9	24142864	OUTLINE-MDL VAD V2X	DOC
10	ES24142865	MECH PCB REQ-VAD V2X	DOC
11	DK 320286	LABEL MAKE-FCC	1
12	DK 320287	LABEL MAKE-1C	1
13	DK 320288	SPACER CUST-SCREW	4

DESIGNATED CHARACTERISTICS		DCI		WPC	
3	LAST NO USED	K OR G	FIT/FUNCTION	CI	FF
0	TOTAL ON DRAWING	IN SYMBOL INDICATES CHECKPOINT			
KPC	DCI	SAFETY/COMPLIANCE <th colspan="2">SC</th>		SC	
NO	NO	TYPE	DESCRIPTION	RATIONALE	ZONE SH PTS
1	CI	CUSTOMER INTERFACE FEATURE	PRESENCE CHECK	C6	
2	CI	CUSTOMER INTERFACE FEATURE	MATING CHECK	C6	
3	CI	CUSTOMER INTERFACE FEATURE	MATING CHECK	B6	

DWG STATUS				REVISION HISTORY				AUTH	DR	APP'D	DATE
OSFEI	B	A		DATE	REV	BY	CHK	ZONE			

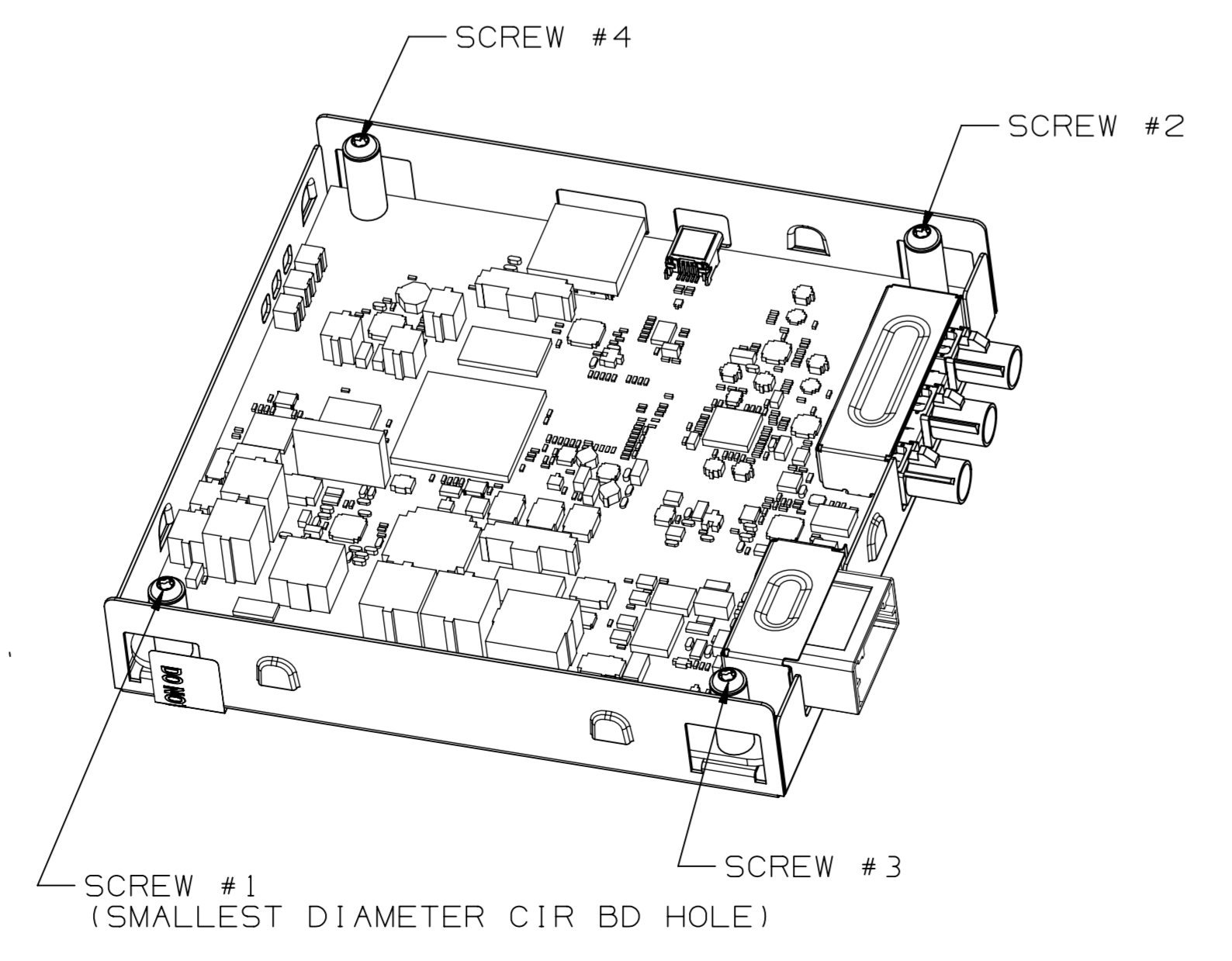


DK313742: HARNESS ADAPTER TO BE SUPPLIED WITH EACH MODULE BUT DOES NOT NEED TO BE CONNECTED

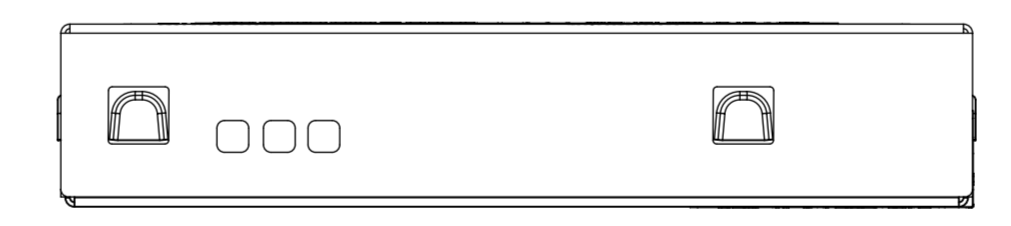
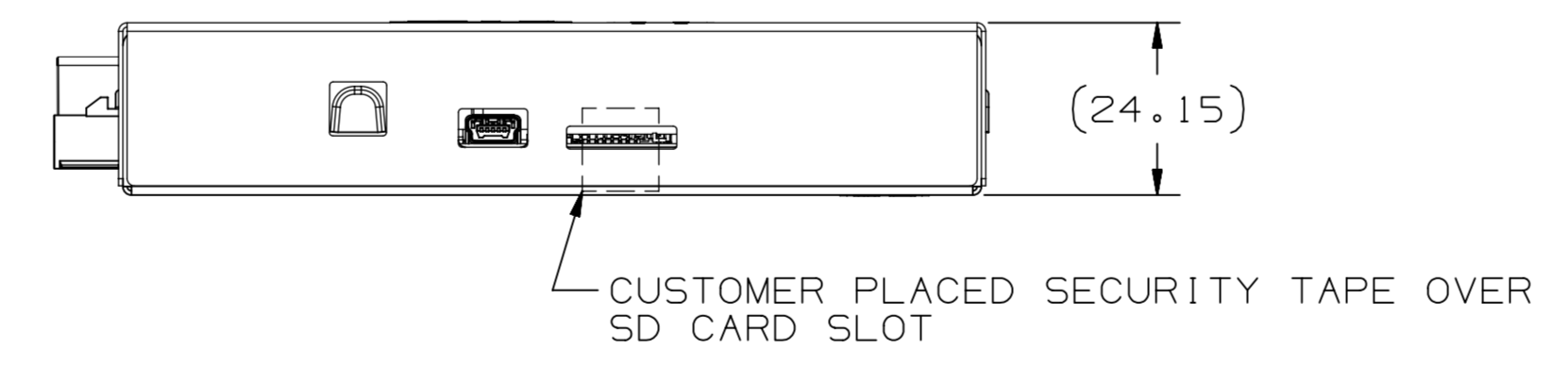


TERMINAL #	CIRCUIT DESCRIPTION	COMMENT & CLARIFICATION
1	GROUND	GROUND
2	SUPPLY VOLTAGE (UNREGULATED)	BATTERY
3	HIGH SPEED CAN SERIAL DATA HS GMLAN1-	HSCAN-
4	HIGH SPEED CAN SERIAL DATA HS GMLAN1+	HSCAN+
5	HSCAN COMM ENABLE	COML-ENA
6	HIGH SPEED CAN SERIAL DATA TERMINATION -	COML-TERM-
7	HIGH SPEED CAN SERIAL DATA TERMINATION +	COML-TERM+
8	NO CONNECTION, PIN IS TIED TO GROUND	N/C
9	LOW SPEED CAN SERIAL DATA	LSCAN
10	LOW SPEED CAN SERIAL DATA I(OUT)	LSCAN-I(OUT)
11	HIGH SPEED CAN SERIAL DATA HS GMLAN1-I(OUT)	HSCAN-I(OUT)
12	HIGH SPEED CAN SERIAL DATA HS GMLAN1+I(OUT)	HSCAN+I(OUT)

REQUIRED SCREW ASSEMBLY SEQUENCE:



RECOMMENDED DRIVER TORQUE SETTING (inch-lbs)	QUANTITY	ASSEMBLED PARTS
3.0±0.5 (0.34±0.05 Nm)	4	PCB ASM TO CASE (SCREWS #1-#4)



- NOTE 1: CHECK FOR PRESENCE OF HOLES AND MOUNTING FEATURES.
 - NOTE 2: CHECK CONNECTORS WITH EQUIVALENT MATING CONNECTORS SPECIFIED.
 - NOTE 3: CHECK FOR BENT PINS ON CONNECTORS.
- THESE FEATURES ARE TO BE CHECKED FOR PRESENCE AND CORRECT INTERFACE WITH MATING CONNECTORS.

ADVANCED PRINT FOR REFERENCE ONLY
2018/02/05

UNLESS OTHERWISE SPECIFIED
THIS DOCUMENT IS IN ACCORDANCE WITH ASME Y14.5M 1994. SEE DELPHI ENGINEERING DESIGN STANDARDS FOR FURTHER INFORMATION.

DELPHI
COPYRIGHT 2017 DELPHI CORPORATION AND/OR ITS AFFILIATES. ALL RIGHTS RESERVED.

THIS DRAWING IS THE PROPERTY OF DELPHI CORPORATION AND CONTAINS DELPHI CONFIDENTIAL INFORMATION. THE REPRODUCTION, DISTRIBUTION AND UTILIZATION OF THIS DOCUMENT OR THE INFORMATION CONTAINED THEREIN, AS WELL AS COMMUNICATION OF ANY CONTENTS HEREIN, IS STRICTLY PROHIBITED WITHOUT EXPRESS AUTHORIZATION BY DELPHI.

ALL DIMENSIONS ARE IN MILLIMETERS
ZERO PLACE DECIMALS = N/A
ONE PLACE DECIMALS = 0.3
TWO PLACE DECIMALS = 0.15

ANGLES ± 1 DEGREE

REFERENCE

THIRD ANGLE PROJECTION
DO NOT SCALE
USE MATH DATA
NX V11.0

FIRST DWG: 28562302A
REFERENCE: N/A
REPLACES: N/A
REPLACED BY: 28562302

DATE: 190017
DR: ED MENASSAKA
APP'D: STEVE LIBURDI
APP'D: MITCH McILRATH
MATERIAL: SEE ITEM LIST
DRAWING NAME: MDL ASM-VAD V2X
DRAWING NUMBER: 28562302A
SCALE: 1:1
SHEET NO: 1 OF 1
REV: A

VELCRO STRAPS PERMISSIBLE IN THESE AREAS

