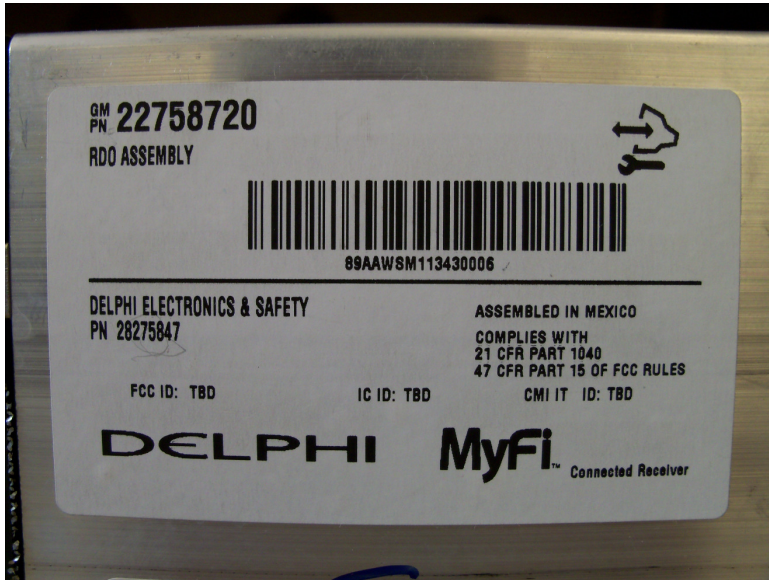


ICR FCC/IC ID LABEL & LOCATION

FCC ID Label Artwork



FCC ID Label Location



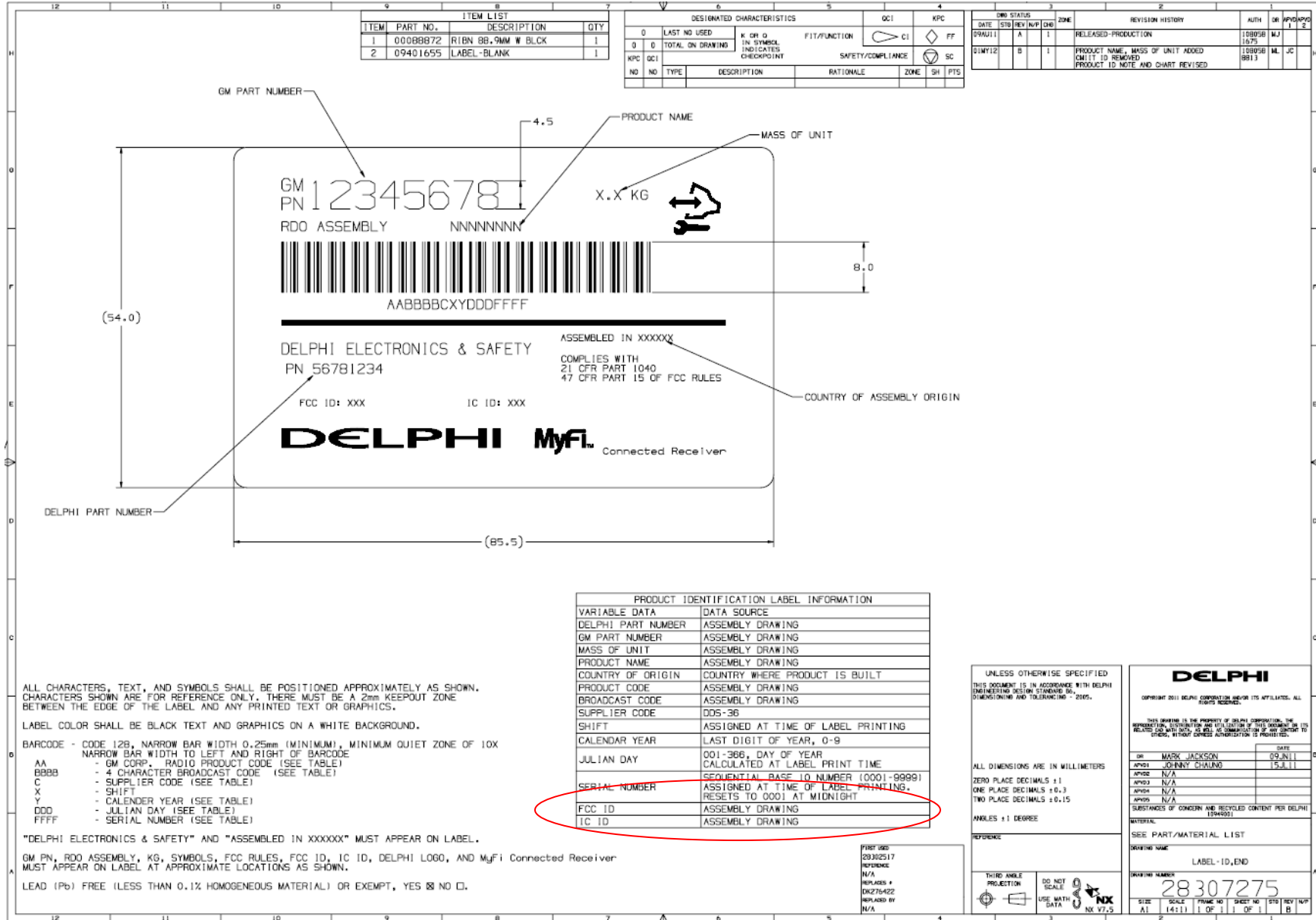
Note:

At the time of submission of the FCC Certification application, a label had not been printed yet with the FCC and IC IDs. The ID numbers are as follows:

FCC ID: L2C0050TR

IC ID: 3432A-0050TR

ICR LABEL DRAWING



EXCERPT OF RADIO ASSEMBLY DRAWING - MOCKUP OF LABEL DRAWING

Formal Drawings will be released in June of 2012

The drawing shows a side view of a radio assembly. A label is affixed to the front panel, containing the following information:

- Part Number: 12345678
- Barcode
- DELPHI logo

Dimensions of (5.0) are indicated at the top left. A red circle highlights the label area, with a red arrow pointing to a handwritten note:

UPDATE LABEL 28307275 IN THIS VIEW

Below the drawing is a table titled "ABEL INFORMATION":

| ABEL INFORMATION | | |
|------------------|------------------------------|----------------|
| 1 | MOD L N U M B E R (CUSTOMER) | 22758720 |
| 2 | PRODUCT NAME | 3 GMT967 CRCD |
| 3 | BROADCAST CODE | AAWS |
| 4 | PRODUCT CODE | 89 |
| 5 | DELPHI MODEL NUMBER | 28275847 |
| 6 | MASS OF UNIT in Kg | 2.3 |
| 7 | FCC ID | 199 |
| 8 | IC ID | 199 |
| 9 | ... | ... |

Handwritten red annotations with arrows point from the table to the following text:

- L2Cφφ5φTR
- 3432A-φφ5φTR

At the bottom right, there is a box containing the text "UNLESS OTHERWISE SPECIFIED" and the "DELPHI" logo.