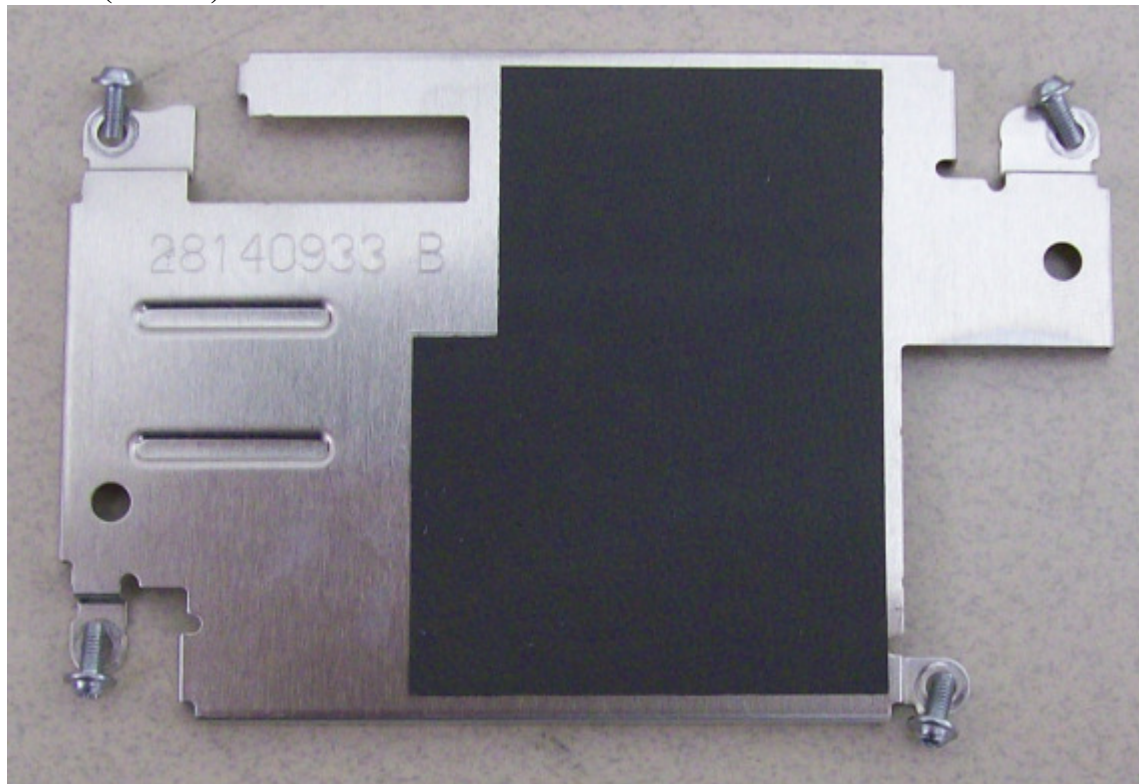
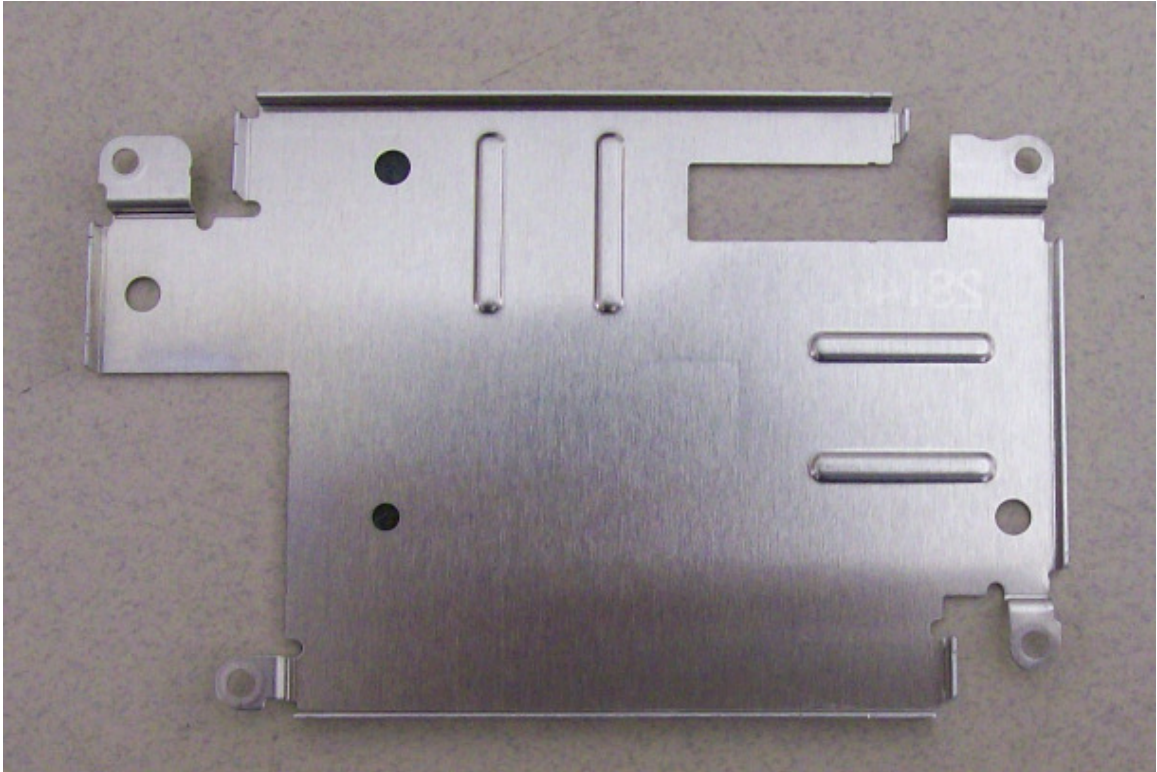


Internal Photos

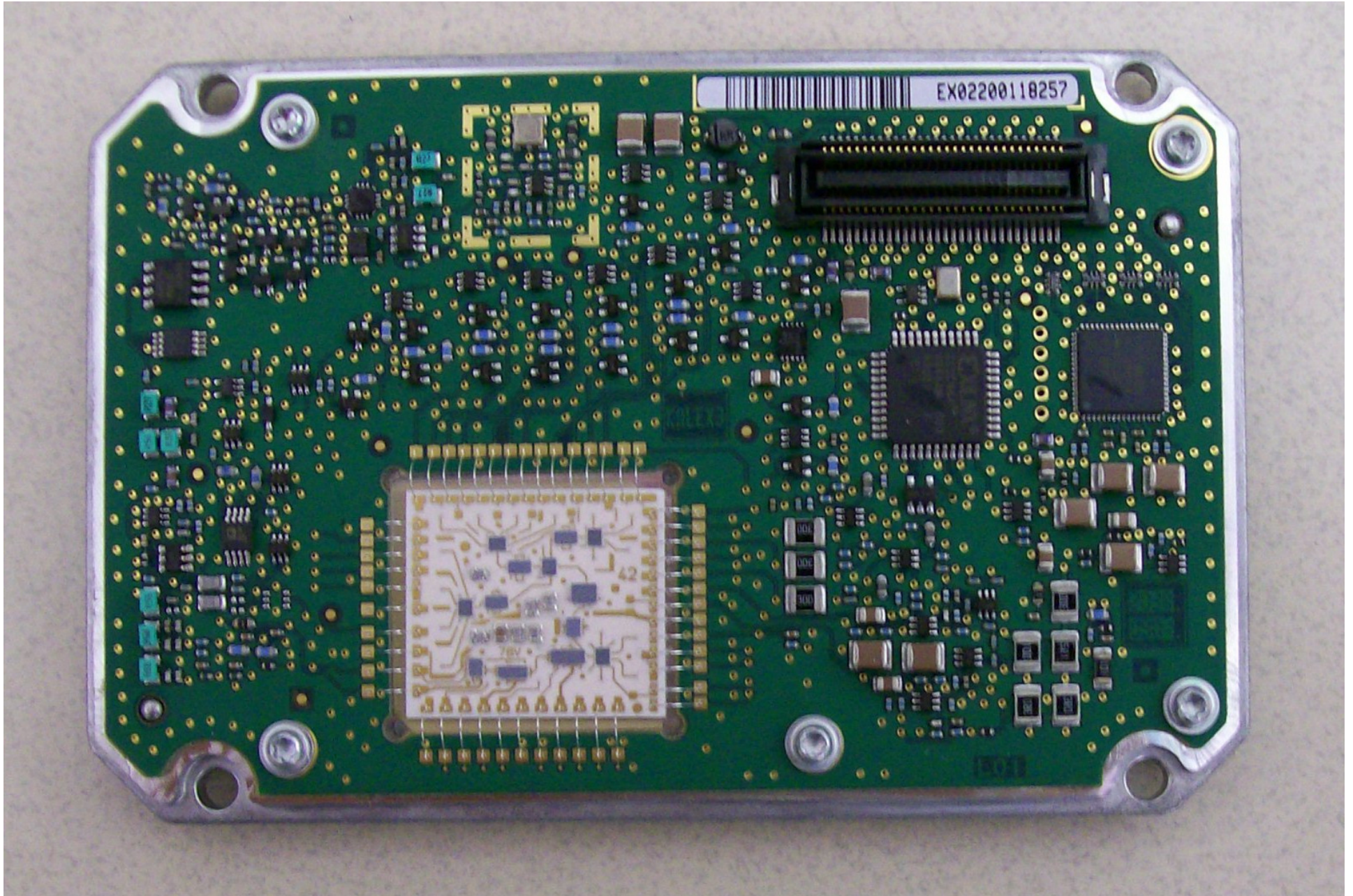
Shield (Side #1)



Shield (Side #2)

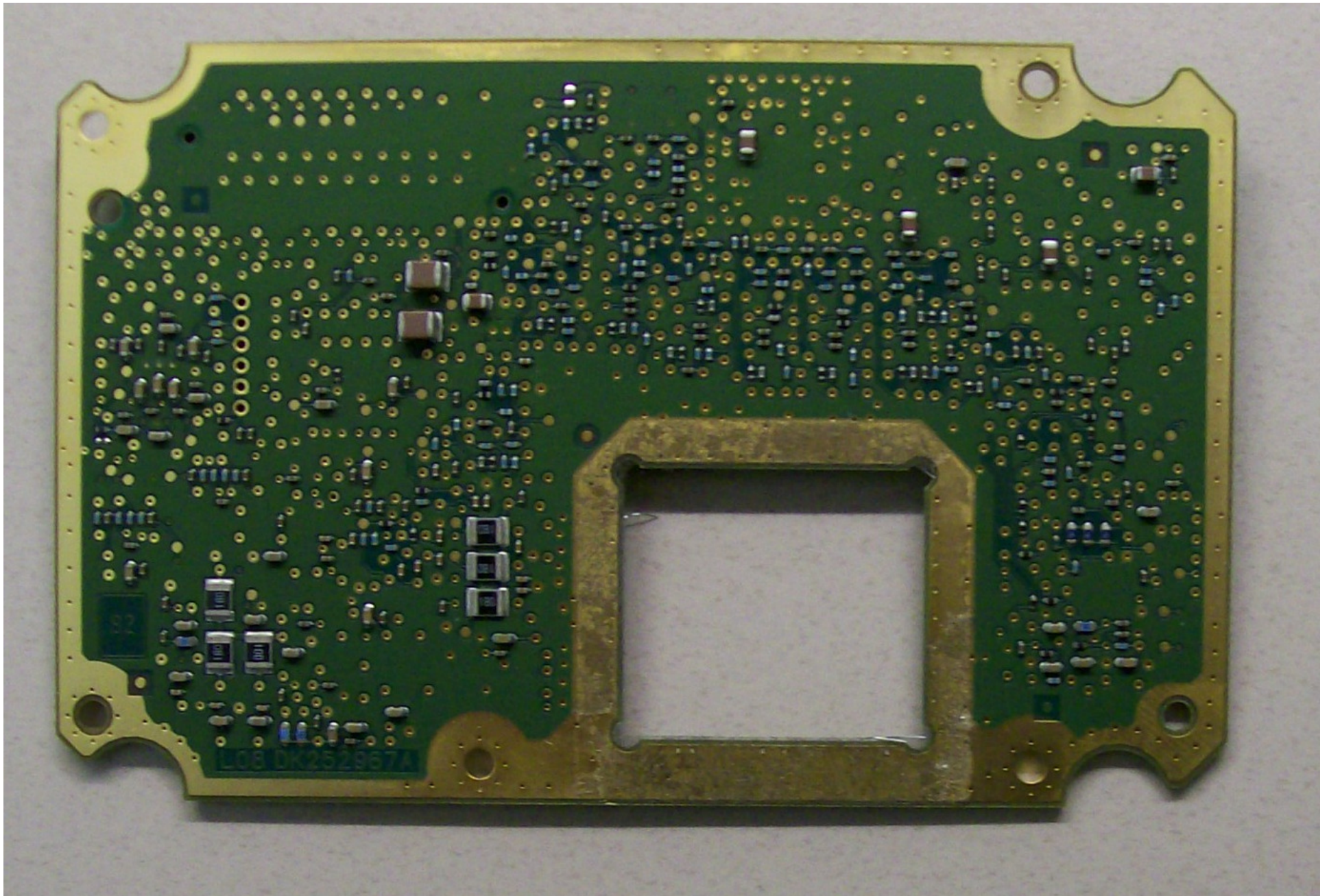


Transceiver Circuit Board (Side #1)

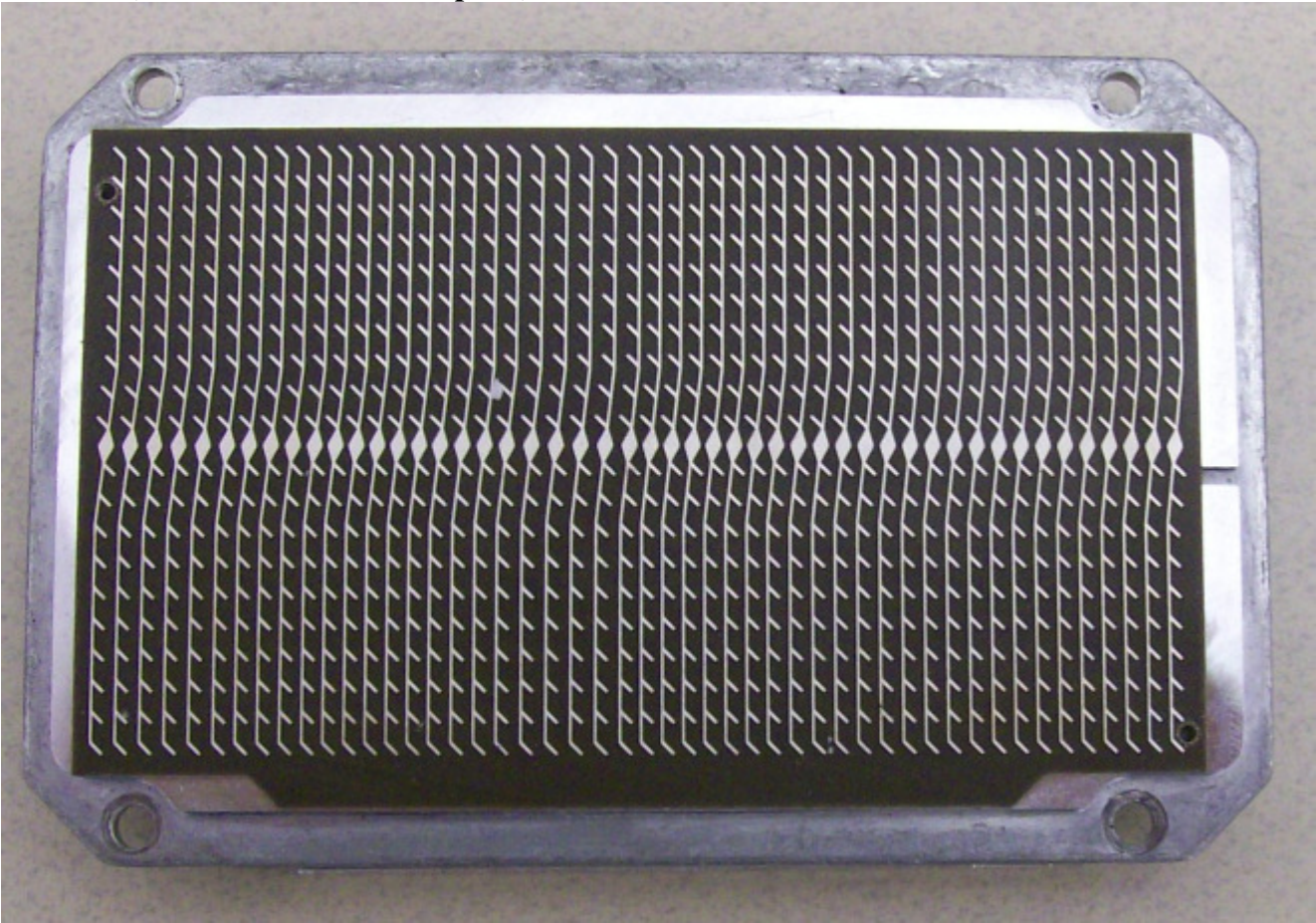


Transceiver Circuit Board (Side #2)

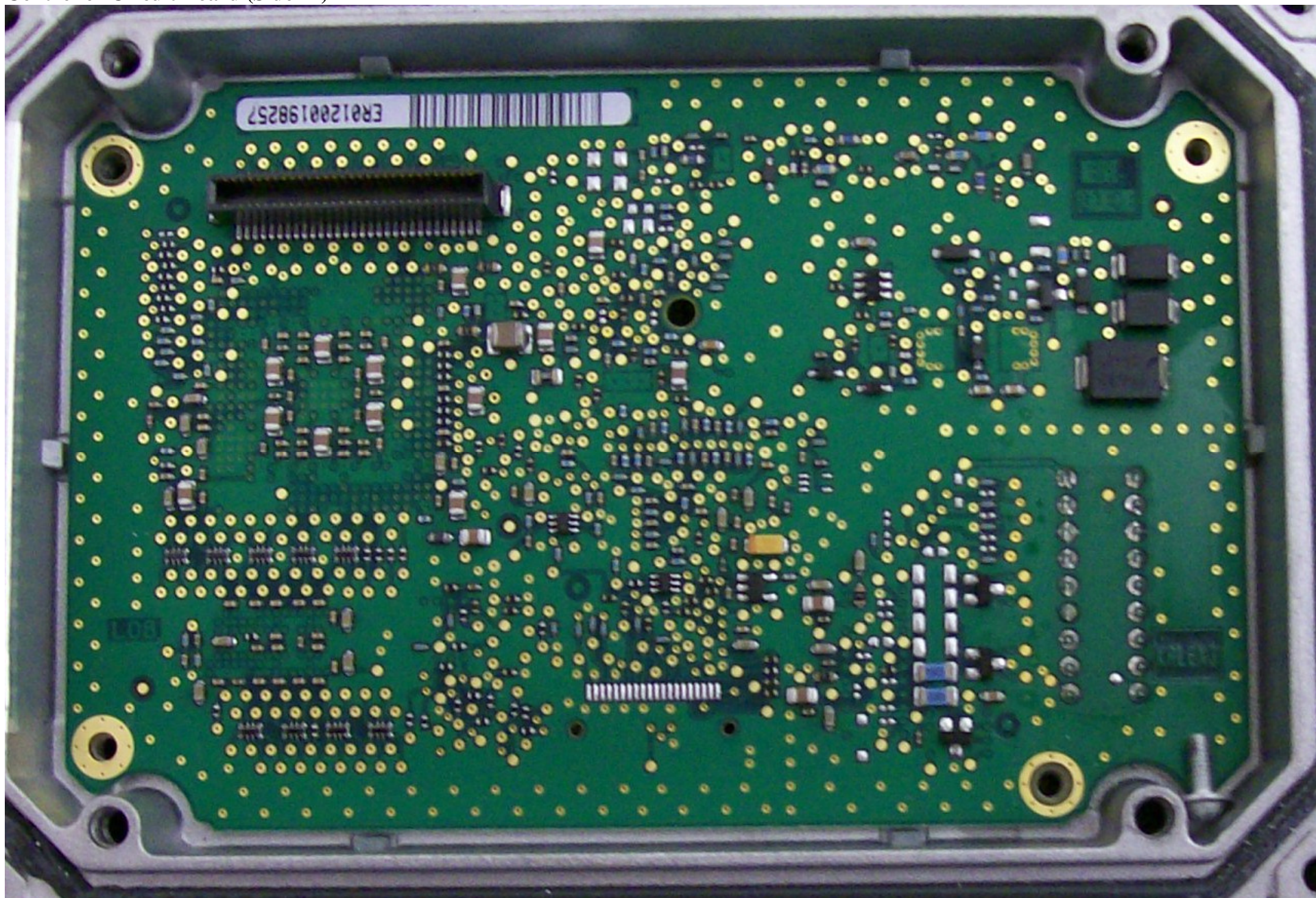
(Transceiver removed; normally bonded to metal baseplate)



Antenna (Attached to Metal Baseplate)



Controller Circuit Board (Side #1)



Controller Circuit Board (Side #2)

