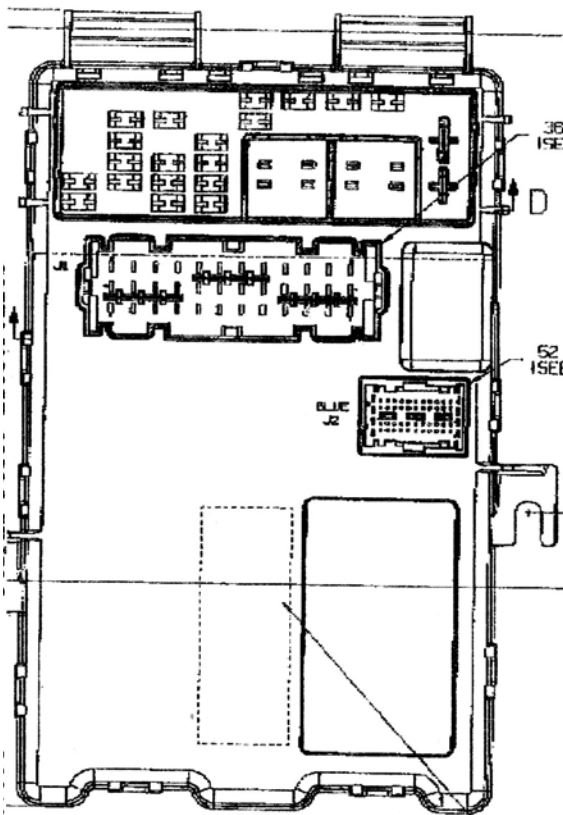


SLOT C DETAIL
SCALE 4:1

SLOT B DETAIL
SCALE 4:1



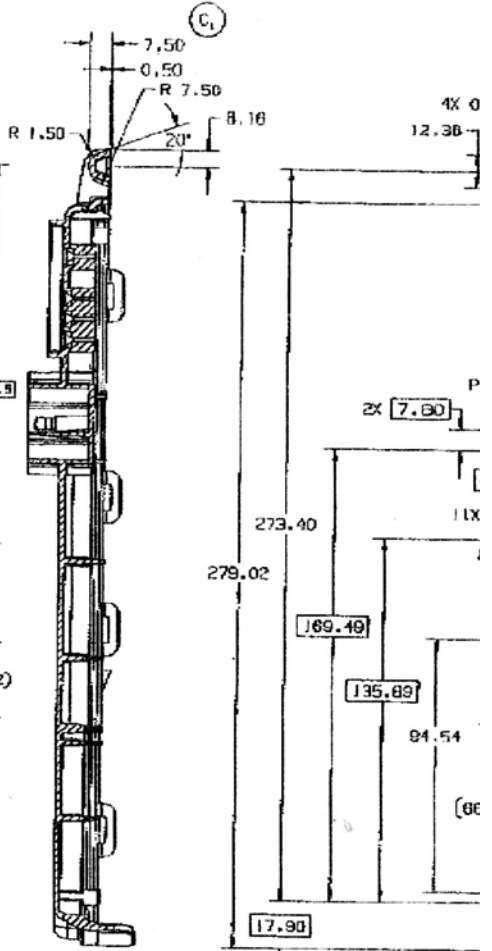
36 PIN CONNECTOR
(SEE SHT 2 DETAIL)

52 PIN CONNECTOR
(SEE SHT 2 DETAIL)

BUC
J2

(179.9)

(28.2)



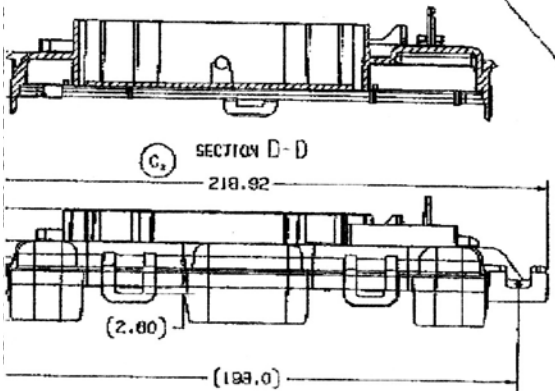
SECTION B-B

ϕ 3.28 ± 0.1
 ϕ 0.00
B

NOTE TO BE WELD IN THIS AREA.
FCC ID:
IC1

This device complies with part 15 of the FCC Rules and with RSS-210 of Industry Canada. Operation is subject to the following conditions: (1) this device may not cause harmful interference, and (2) this device must accept any interference received, including interference that may cause undesired operation.

The term "IC" before the radio certification number only signifies that Industry Canada technical specifications were met.



SECTION D-D

(218.92)

(2.00)

(199.0)

10

9

8

25

FCC ID: L2C0019R
IC: 3432A-0019R