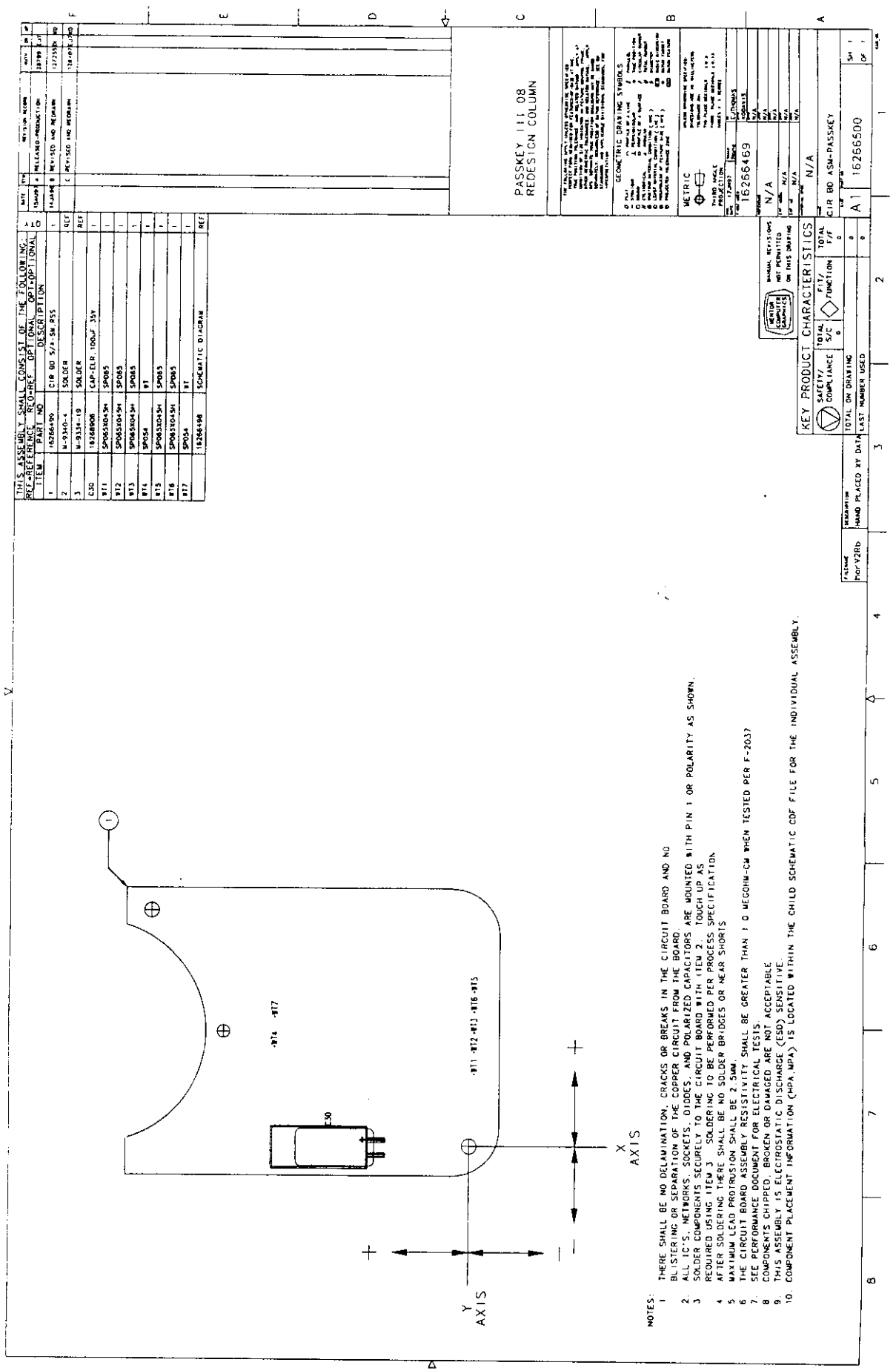


PART NO. 09369088

REV. A
SHT 2 OF 2

1 2 3 4 5 6 7 8



- NOTES:
1. THERE SHALL BE NO DELAMINATION, CRACKS OR BREAKS IN THE CIRCUIT BOARD AND NO BLISTERING OR SEPARATION OF THE COPPER CIRCUIT FROM THE BOARD.
 2. ALL T.C.'S, NETWORKS, SOCKETS, DIODES, AND POLARIZED CAPACITORS ARE MOUNTED WITH PIN 1 OR POLARITY AS SHOWN.
 3. SOLDER COMPONENTS SECURELY TO THE CIRCUIT BOARD WITH ITEM 2. TOUCH UP AS REQUIRED USING ITEM 3. SOLDERING TO BE PERFORMED PER PROCESS SPECIFICATION.
 4. AFTER SOLDERING THERE SHALL BE NO SOLDER BRIDGES OR NEAR SHORTS.
 5. LEAD WELDING PRECISION SHALL BE 2.5MM.
 6. THE CIRCUIT BOARD ASSEMBLY RESISTIVITY SHALL BE GREATER THAN 10 MEGOHM-CM WHEN TESTED PER F-2037.
 7. SEE PERFORMANCE SPECIFICATION FOR ELECTRICAL TESTS.
 8. COMPONENTS CHIPPED, BROKEN OR DAMAGED ARE NOT ACCEPTABLE.
 9. THIS ASSEMBLY IS ELECTROSTATIC DISCHARGE (ESD) SENSITIVE.
 10. COMPONENT PLACEMENT INFORMATION (CPA, JPCA) IS LOCATED WITHIN THE CHILD SCHEMATIC CDF FILE FOR THE INDIVIDUAL ASSEMBLY.

ITEM	REF. PART NO.	QTY	DESCRIPTION	OPTIONAL	DESCRIPTION	QTY	REF.
1	16266599	1	CIR BO 5/A-SM PSS			1	REF
2	M-2340-4	1	SOLDER			1	REF
3	M-2314-10	1	SOLDER			1	REF
400	16266600	1	CAP-ELC 100UF 35V			1	REF
R11	SP083025M	1	SP085			1	REF
R12	SP083025M	1	SP085			1	REF
R13	SP083025M	1	SP085			1	REF
R14	SP085	1	SP085			1	REF
R15	SP083025M	1	SP085			1	REF
R16	SP083025M	1	SP085			1	REF
R17	SP085	1	SP085			1	REF
R18	SP085	1	SP085			1	REF
R19	SP085	1	SP085			1	REF
R20	16266469	1	SCHEMATIC DIAGRAM			1	REF

REV	DATE	BY	DESCRIPTION	APP'D
1	10/18/99	WILLARD	PRODUCTION	
2	10/18/99	WILLARD	REVISION AND REWORK	
3	10/18/99	WILLARD	REVISION AND REWORK	

PASSKEY III 08
REDESIGN COLUMN

GEOMETRIC DRAWING SYMBOLS

1. DIMENSION LINE
2. DIMENSION VALUE
3. DIMENSION UNIT
4. DIMENSION SURFACE
5. DIMENSION EXTENSION LINE
6. DIMENSION TERMINATION LINE
7. DIMENSION START POINT
8. DIMENSION END POINT
9. DIMENSION CENTER POINT
10. DIMENSION MIDPOINT

METRIC

UNIT: MILLIMETER

SCALE: 1:1

DATE: 10/18/99

16266469



KEY PRODUCT CHARACTERISTICS	TOTAL	FIT	FUNCTION
SAFETY COMPLIANCE	0	0	0
TOTAL ON DRAWING	0	0	0
LAST NUMBER USED	0	0	0

NAME	REVISION	DATE	BY
PorV2RB			

REV	DATE	BY	DESCRIPTION
1	10/18/99	WILLARD	PRODUCTION

