



FCA P/N: 68239853AA
CODEP P/N: 5333609
DELPHI P/N: 20-002-003657
DATE: 30815 500801
FCC:
L2C0061TR



ABS+PC

1



FCA P/N: 68239853AA

CODEP P/N: 5333609

DELPHI P/N: 20-002-003657

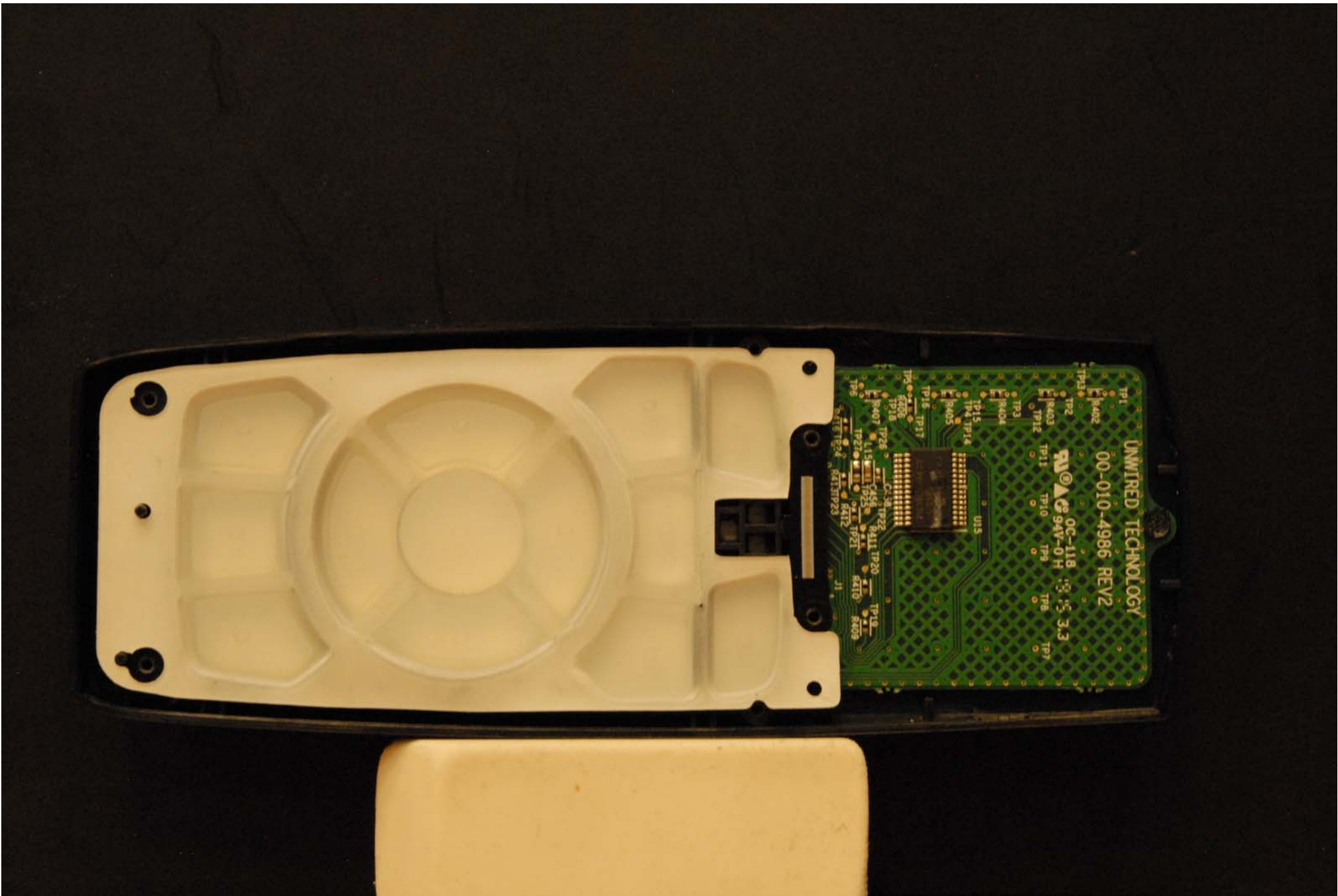
DATE: 30815 500801

FCC:

L2C0061TR







UNWIRED TECHNOLOGY

00-010-4986 REV2

94V-0 H 3.3

TP1 TP2 TP3 TP4 TP5 TP6 TP7 TP8 TP9 TP10 TP11 TP12 TP13 TP14 TP15 TP16 TP17 TP18 TP19 TP20 TP21 TP22 TP23 TP24 TP25 TP26 TP27 TP28 TP29 TP30 TP31 TP32 TP33 TP34 TP35 TP36 TP37 TP38 TP39 TP40 TP41 TP42 TP43 TP44 TP45 TP46 TP47 TP48 TP49 TP50 TP51 TP52 TP53 TP54 TP55 TP56 TP57 TP58 TP59 TP60 TP61 TP62 TP63 TP64 TP65 TP66 TP67 TP68 TP69 TP70 TP71 TP72 TP73 TP74 TP75 TP76 TP77 TP78 TP79 TP80 TP81 TP82 TP83 TP84 TP85 TP86 TP87 TP88 TP89 TP90 TP91 TP92 TP93 TP94 TP95 TP96 TP97 TP98 TP99 TP100

U15

94V-0 H 3.3

UNWIRED TECHNOLOGY

00-010-4986 REV2

94V-0 H 3.3

UNWIRED TECHNOLOGY

00-010-4986 REV2

94V-0 H 3.3

UNWIRED TECHNOLOGY

00-010-4986 REV2

94V-0 H 3.3

UNWIRED TECHNOLOGY

00-010-4986 REV2

94V-0 H 3.3

UNWIRED TECHNOLOGY

00-010-4986 REV2

94V-0 H 3.3

UNWIRED TECHNOLOGY

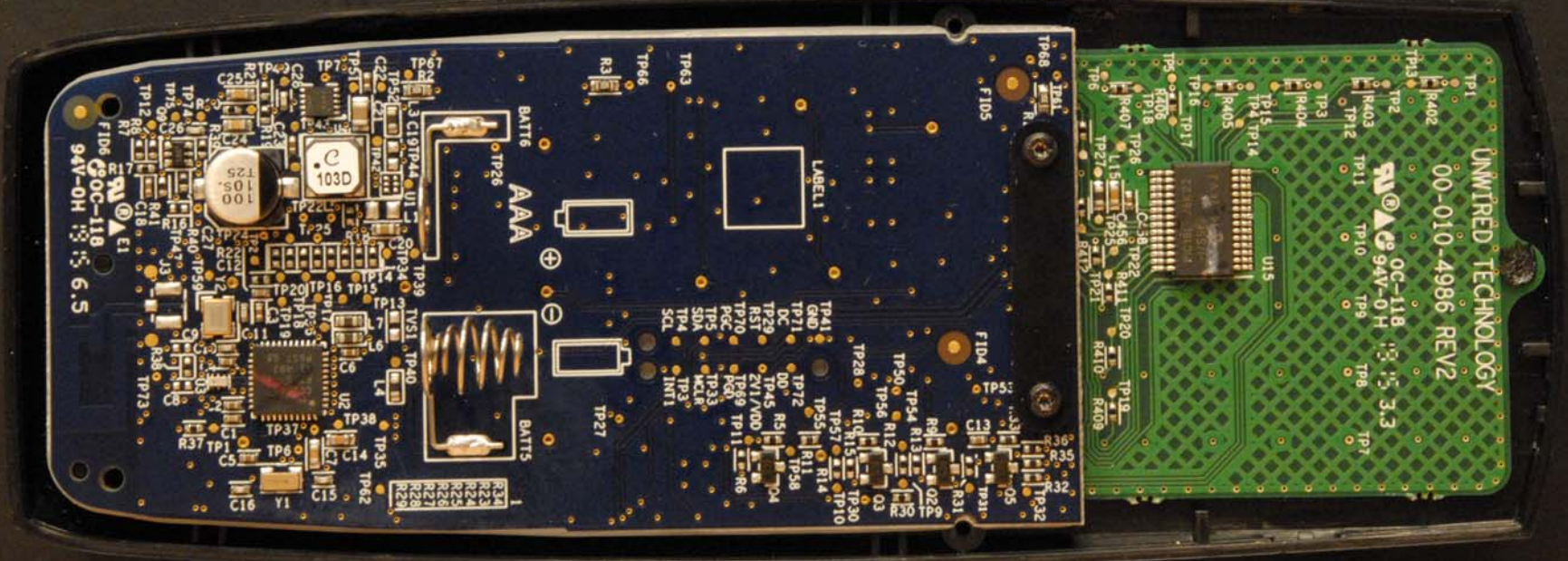
00-010-4986 REV2

94V-0 H 3.3

UNWIRED TECHNOLOGY

00-010-4986 REV2

94V-0 H 3.3



UNWIRED TECHNOLOGY

00-010-4986 REV2

OC-118 94V-0 H 3.3

AAA

BATT5

LABEL1

FID6 OC-118 94V-0 H 6.5



