

## TEST REPORT

Test Report No.: 1-9034/14-01-02



Deutsche  
Akkreditierungsstelle  
D-PL-12076-01-00

### Testing Laboratory

**CETECOM ICT Services GmbH**

Untertürkheimer Straße 6 – 10  
66117 Saarbrücken/Germany  
Phone: + 49 681 5 98 - 0  
Fax: + 49 681 5 98 - 9075  
Internet: <http://www.cetecom.com>  
e-mail: [ict@cetecom.com](mailto:ict@cetecom.com)

**Accredited Test Laboratory:**

The testing laboratory (area of testing) is accredited according to DIN EN ISO/IEC 17025 (2005) by the Deutsche Akkreditierungsstelle GmbH (DAkkS). The accreditation is valid for the scope of testing procedures as stated in the accreditation certificate with the registration number: D-PL-12076-01-00

### Applicant

**PHONAK Communications AG**

Länggasse 17  
3280 Murten/SWITZERLAND

Phone: +41 2 66 72 96 72

Contact: Neviana Nikoloski  
e-mail: [neviana.nikoloski@phonakcom.ch](mailto:neviana.nikoloski@phonakcom.ch)  
Phone: +41 2 66 72 92 42  
Fax: +41 2 66 72 35 11

### Manufacturer

**PHONAK Communications AG**

Länggasse 17  
3280 Murten/SWITZERLAND

### Test Standard/s

IEEE 1528-2003	Recommended Practice for Determining the Peak Spatial-Average Specific Absorption Rate (SAR) in the Human Head from Wireless Communications Devices: Measurement Techniques
RSS-102 Issue 4	Radio Frequency Exposure Compliance of Radiocommunication Apparatus (All Frequency Bands)

For further applied test standards please refer to section 3 of this test report.

### Test Item

Kind of test item:	Wireless Microphone with 2.4 GHz GFSK
Device type:	portable device
<b>Model name:</b>	<b>Roger EasyPen</b>
S/N serial number:	<b>FCa 12.9.14 (small fractus)</b>
FCC-ID:	KWCTX22
IC:	2262A-TX22
Hardware status:	2.0
Software status:	SVN 5037
Frequency:	see technical details
Antenna:	integrated antenna
Battery option:	5V / 500mA
Accessories:	---
Test sample status:	identical prototype
Exposure category:	general population / uncontrolled environment



This test report is electronically signed and valid without handwriting signature. For verification of the electronic signatures, the public keys can be requested at the testing laboratory.

### Test Report authorised:

Oleksandr Hnatovskiy  
Specialist  
Radio Communications & EMC

### Test performed:

Marco Scigliano  
Experienced  
Radio Communications & EMC

## 1 Table of contents

1	Table of contents .....	2
2	General information .....	3
2.1	Notes and disclaimer .....	3
2.2	Application details .....	3
2.3	Statement of compliance .....	3
2.4	Technical details .....	4
3	Test standards/ procedures references .....	5
3.1	RF exposure limits .....	6
4	Summary of Measurement Results .....	7
4.1	SAR measurement variability and measurement uncertainty analysis .....	7
5	Test Environment .....	7
6	Test Set-up .....	8
6.1	Measurement system .....	8
6.1.1	System Description .....	8
6.1.2	Test environment .....	9
6.1.3	Probe description .....	9
6.1.4	Phantom description .....	10
6.1.5	Device holder description .....	11
6.1.6	Scanning procedure .....	12
6.1.7	Spatial Peak SAR Evaluation .....	13
6.1.8	Data Storage and Evaluation .....	14
6.1.9	Tissue simulating liquids: dielectric properties .....	16
6.1.10	Tissue simulating liquids: parameters .....	16
6.1.11	Measurement uncertainty evaluation for SAR test .....	17
6.1.12	Measurement uncertainty evaluation for System Check .....	21
6.1.13	System check .....	23
6.1.14	System check procedure .....	23
6.1.15	System validation .....	24
7	Detailed Test Results .....	25
7.1	Conducted average power measurements Bluetooth 2.4 GHz .....	25
7.2	SAR test results .....	25
7.2.1	Results overview .....	25
7.2.2	General description of test procedures .....	26
8	Test equipment and ancillaries used for tests .....	26
9	Observations .....	26
Annex A:	System performance check .....	27
Annex B:	DASY5 measurement results .....	29
Annex B.1:	Bluetooth .....	29
Annex B.2:	Liquid depth .....	44
Annex C:	Photo documentation .....	45
Annex D:	Calibration parameters .....	50
Annex E:	RF Technical Brief Cover Sheet acc. to RSS-102 Annex A .....	51
Annex E.1:	Declaration of RF Exposure Compliance .....	51

<b>Annex F: Document History .....</b>	<b>52</b>
--	-----------

<b>Annex G: Further Information .....</b>	<b>52</b>
---	-----------

## **2 General information**

### **2.1 Notes and disclaimer**

The test results of this test report relate exclusively to the test item specified in this test report. CETECOM ICT Services GmbH does not assume responsibility for any conclusions and generalisations drawn from the test results with regard to other specimens or samples of the type of the equipment represented by the test item. The test report may only be reproduced or published in full. Reproduction or publication of extracts from the report requires the prior written approval of CETECOM ICT Services GmbH.

This test report is electronically signed and valid without handwriting signature. For verification of the electronic signatures, the public keys can be requested at the testing laboratory.

The testing service provided by CETECOM ICT Services GmbH has been rendered under the current "General Terms and Conditions for CETECOM ICT Services GmbH".

CETECOM ICT Services GmbH will not be liable for any loss or damage resulting from false, inaccurate, inappropriate or incomplete product information provided by the customer.

Under no circumstances does the CETECOM ICT Services GmbH test report include any endorsement or warranty regarding the functionality, quality or performance of any other product or service provided.

Under no circumstances does the CETECOM ICT Services GmbH test report include or imply any product or service warranties from CETECOM ICT Services GmbH, including, without limitation, any implied warranties of merchantability, fitness for purpose, or non-infringement, all of which are expressly disclaimed by CETECOM ICT Services GmbH.

All rights and remedies regarding vendor's products and services for which CETECOM ICT Services GmbH has prepared this test report shall be provided by the party offering such products or services and not by CETECOM ICT Services GmbH.

In no case this test report can be considered as a Letter of Approval.

### **2.2 Application details**

Date of receipt of order:	2014-11-25
Date of receipt of test item:	2014-11-25
Start of test:	2014-12-01
End of test:	2014-12-02
Person(s) present during the test:	

### **2.3 Statement of compliance**

The SAR values found for the Roger EasyPen Wireless Microphone with 2.4 GHz GFSK are below the maximum recommended levels of 1.6 W/Kg as averaged over any 1 g tissue according to the FCC rule §2.1093, the ANSI/IEEE C 95.1:1992, the NCRP Report Number 86 for uncontrolled environment, according to the Health Canada's Safety Code 6 and the Industry Canada Radio Standards Specification RSS-102 for General Population/Uncontrolled exposure.

**2.4 Technical details**

Band tested for this test report	Technology	Lowest transmit frequency/MHz	Highest transmit frequency/MHz	Lowest receive Frequency/MHz	Highest receive Frequency/MHz	Kind of modulation	Power Class	Tested power control level	Test channel low	Test channel middle	Test channel high	Maxi. averaged output power/dBm
<input checked="" type="checkbox"/>	BT	2402	2480	2402	2480	GFSK	1	max	0	38	78	14.4

### 3 Test standards/ procedures references

Test Standard	Version	Test Standard Description
IEEE 1528-2003	2003-04	Recommended Practice for Determining the Peak Spatial-Average Specific Absorption Rate (SAR) in the Human Head from Wireless Communications Devices: Measurement Techniques
IEEE 1528-2013	2014-06	Recommended Practice for Determining the Peak Spatial-Average Specific Absorption Rate (SAR) in the Human Head from Wireless Communications Devices: Measurement Techniques
RSS-102 Issue 4	2010-03	Radio Frequency Exposure Compliance of Radiocommunication Apparatus (All Frequency Bands)
Canada's Safety Code No. 6	99-EHD-237	Limits of Human Exposure to Radiofrequency Electromagnetic Fields in the Frequency Range from 3 kHz to 300 GHz
IEEE Std. C95-3	2002	IEEE Recommended Practice for the Measurement of Potentially Hazardous Electromagnetic Fields – RF and Microwave
IEEE Std. C95-1	1992	IEEE Standard for Safety Levels with Respect to Human Exposure to Radio Frequency Electromagnetic Fields, 3 kHz to 300 GHz.
IEC 62209-2	2010	Human exposure to radio frequency fields from hand-held and bodymounted wireless communication devices. Human models, instrumentation, and procedures. Procedure to determine the specific absorption rate (SAR) for wireless communication devices used in close proximity to the human body (frequency range of 30 MHz to 6 GHz)
<b>FCC KDBs:</b>		
KDB 865664D01v01	February 7, 2014	FCC OET SAR measurement requirements 100 MHz to 6 GHz
KDB 865664D02v01	May 28, 2013	RF Exposure Compliance Reporting and Documentation Considerations
KDB 447498D01v05	February 7, 2014	Mobile and Portable Devices RF Exposure Procedures and Equipment Authorization Policies
KDB 648474D04v01	May 28, 2013	SAR Evaluation Considerations for Wireless Handsets
KDB 450824D01v01	January, 2007	SAR Probe Calibration and System Verification considerations for measurements from 150 MHz to 3 GHz
KDB 450824D01v01	March 4, 2012	Dipole Requirements for SAR System Validation and Verification

### 3.1 RF exposure limits

Human Exposure	Uncontrolled Environment General Population	Controlled Environment Occupational
Spatial Peak SAR* (Brain and Trunk)	<b>1.60 mW/g</b>	8.00 mW/g
Spatial Average SAR** (Whole Body)	0.08 mW/g	0.40 mW/g
Spatial Peak SAR*** (Hands/Feet/Ankle/Wrist)	4.00 mW/g	20.00 mW/g

Table 1: RF exposure limits

The limit applied in this test report is shown in bold letters

Notes:

\* The Spatial Peak value of the SAR averaged over any 1 gram of tissue (defined as a tissue volume in the shape of a cube) and over the appropriate averaging time

\*\* The Spatial Average value of the SAR averaged over the whole body.

\*\*\* The Spatial Peak value of the SAR averaged over any 10 grams of tissue (defined as a tissue volume in the shape of a cube) and over the appropriate averaging time.

Uncontrolled Environments are defined as locations where there is the exposure of individuals who have no knowledge or control of their exposure.

Controlled Environments are defined as locations where there is exposure that may be incurred by persons who are aware of the potential for exposure, (i.e. as a result of employment or occupation).

#### 4 Summary of Measurement Results

<input checked="" type="checkbox"/>	No deviations from the technical specifications ascertained		
<input type="checkbox"/>	Deviations from the technical specifications ascertained		
Maximum SAR value reported for 1g (W/kg)			
	PCE	DTS	UNII
body worn 0 mm distance	--	1.593	--

#### 4.1 SAR measurement variability and measurement uncertainty analysis

This analysis is required for worst case results larger than 0.8 W/kg.

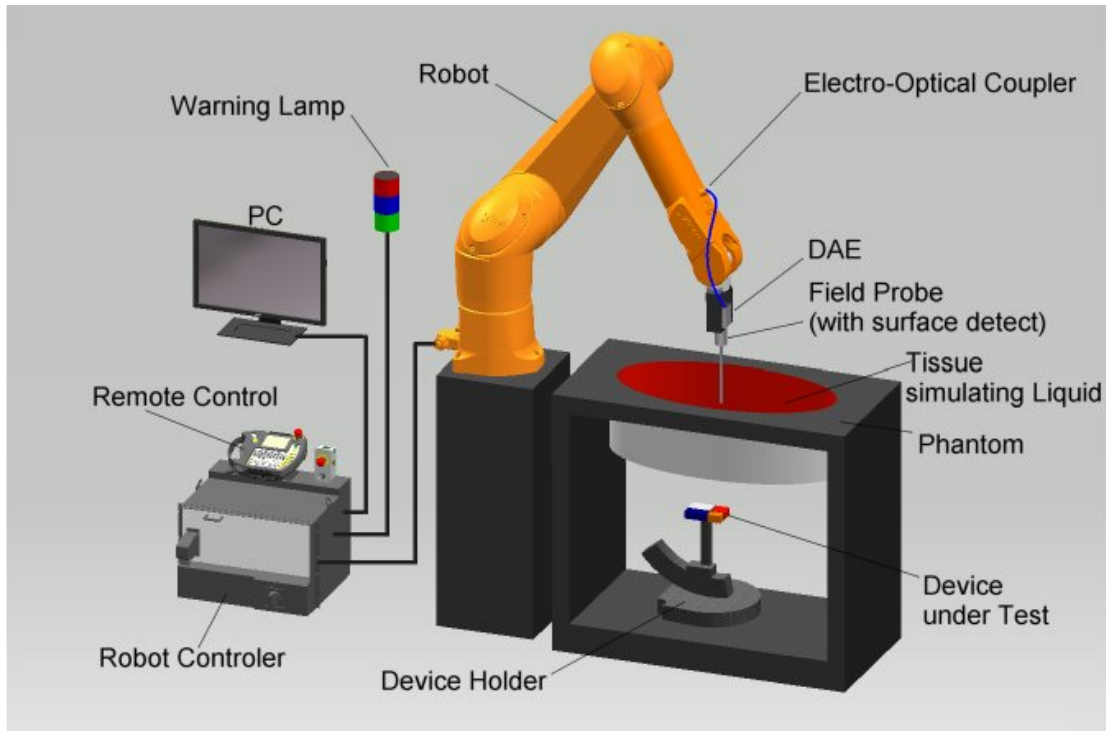
frequency band	highest original measurement result at worst case position (W/kg)	repeated measurement result at worst case position (W/kg)	ratio <1.2
Bluetooth	1.310	1.420	1.08

#### 5 Test Environment

Ambient temperature:	20 – 24 °C
Tissue Simulating liquid:	20 – 24 °C
Relative humidity content:	40 – 50 %
Air pressure:	not relevant for this kind of testing
Power supply:	230 V / 50 Hz

Exact temperature values for each test are shown in the table(s) under 7.1 and/or on the measurement plots.

### 6.1.1 System Description



- The DASY system for performing compliance tests consists of the following items:
- A standard high precision 6-axis robot (Stäubli RX/TX family) with controller and software. An arm extension for accommodating the data acquisition electronics (DAE).
- A dosimetric probe, i.e. an isotropic E-field probe optimized and calibrated for usage in tissue simulating liquid.
- A data acquisition electronic (DAE) which performs the signal amplification, signal multiplexing, AD-conversion, offset measurements, mechanical surface detection, collision detection, etc. The unit is battery powered with standard or rechargeable batteries. The signal is optically transmitted to the EOC.
- The Electro-Optical Coupler (EOC) performs the conversion from the optical into a digital electric signal of the DAE. The EOC is connected to the DASY measurement server.
- The DASY measurement server, which performs all real-time data evaluation for field measurements and surface detection, controls robot movements and handles safety operation. A computer operating Windows 7.
- DASY software and SEMCAD data evaluation software.
- Remote control with teach panel and additional circuitry for robot safety such as warning lamps, etc.
- The generic twin phantom enabling the testing of left-hand and right-hand usage.
- The triple flat and eli phantom for the testing of handheld and body-mounted wireless devices.
- The device holder for handheld mobile phones and mounting device adaptor for laptops
- Tissue simulating liquid mixed according to the given recipes.
- System check dipoles allowing to validate the proper functioning of the system.



### 6.1.2 Test environment

The DASY measurement system is placed in a laboratory room within an environment which avoids influence on SAR measurements by ambient electromagnetic fields and any reflection from the environment. The pictures at the beginning of the photo documentation show a complete view of the test environment. The system allows the measurement of SAR values larger than 0.005 mW/g.

### 6.1.3 Probe description

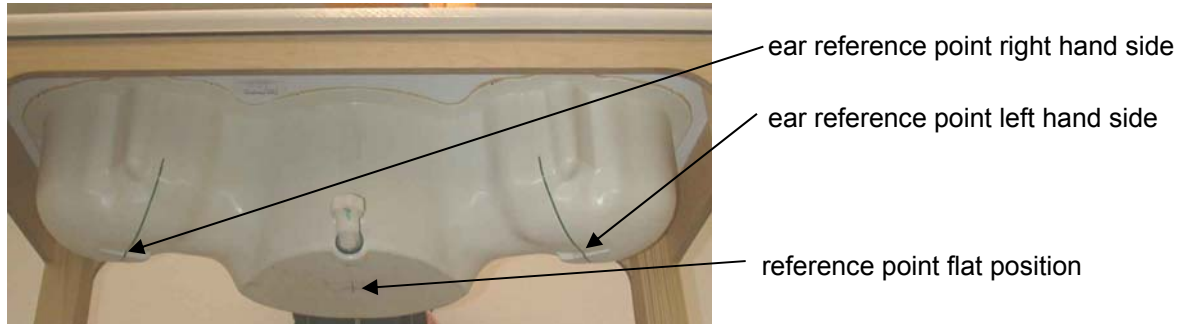
Isotropic E-Field Probe ET3DV6 for Dosimetric Measurements

Technical data according to manufacturer information	
Construction	Symmetrical design with triangular core Built-in optical fiber for surface detection system Built-in shielding against static charges PEEK enclosure material (resistant to organic solvents, e.g., glycoether)
Calibration	In air from 10 MHz to 2.5 GHz In head tissue simulating liquid (HSL) at 900 (800-1000) MHz and 1.8 GHz (1700-1910 MHz) (accuracy $\pm 9.5\%$ ; $k=2$ ) Calibration for other liquids and frequencies upon request
Frequency	10 MHz to 3 GHz (dosimetry); Linearity: $\pm 0.2$ dB (30 MHz to 3 GHz)
Directivity	$\pm 0.2$ dB in HSL (rotation around probe axis) $\pm 0.4$ dB in HSL (rotation normal to probe axis)
Dynamic range	5 $\mu$ W/g to > 100 mW/g; Linearity: $\pm 0.2$ dB
Optical Surface Detection	$\pm 0.2$ mm repeatability in air and clear liquids over diffuse reflecting surfaces (ET3DV6 only)
Dimensions	Overall length: 330 mm Tip length: 16 mm Body diameter: 12 mm Tip diameter: 6.8 mm Distance from probe tip to dipole centers: 2.7 mm
Application	General dosimetry up to 3 GHz Compliance tests of mobile phones Fast automatic scanning in arbitrary phantoms (ET3DV6)

#### 6.1.4 Phantom description

The used SAM Phantom meets the requirements specified in FCC KDB865664 D01 for Specific Absorption Rate (SAR) measurements.

The phantom consists of a fibreglass shell integrated in a wooden table. It allows left-hand and right-hand head as well as body-worn measurements with a maximum liquid depth of 18 cm in head position and 22 cm in planar position (body measurements). The thickness of the Phantom shell is 2 mm +/- 0.1 mm.



Triple Modular Phantom consists of three identical modules which can be installed and removed separately without emptying the liquid. It includes three reference points for phantom installation. Covers prevent evaporation of the liquid. Phantom material is resistant to DGBE based tissue simulating liquids.

### 6.1.5 Device holder description

The DASY device holder has two scales for device rotation (with respect to the body axis) and the device inclination (with respect to the line between the ear openings). The plane between the ear openings and the mouth tip has a rotation angle of  $65^\circ$ . The bottom plate contains three pair of bolts for locking the device holder. The device holder positions are adjusted to the standard measurement positions in the three sections. This device holder is used for standard mobile phones or PDA's only. If necessary an additional support of polystyrene material is used.



Larger DUT's (e.g. notebooks) cannot be tested using this device holder. Instead a support of bigger polystyrene cubes and thin polystyrene plates is used to position the DUT in all relevant positions to find and measure spots with maximum SAR values.

Therefore those devices are normally only tested at the flat part of the SAM.

### 6.1.6 Scanning procedure

- The DASY installation includes predefined files with recommended procedures for measurements and system check. They are read-only document files and destined as fully defined but unmeasured masks. All test positions (head or body-worn) are tested with the same configuration of test steps differing only in the grid definition for the different test positions.
- The „reference“ and „drift“ measurements are located at the beginning and end of the batch process. They measure the field drift at one single point in the liquid over the complete procedure. The indicated drift is mainly the variation of the DUT's output power and should vary max. +/- 5 %.
- The highest integrated SAR value is the main concern in compliance test applications. These values can mostly be found at the inner surface of the phantom and cannot be measured directly due to the sensor offset in the probe. To extrapolate the surface values, the measurement distances to the surface must be known accurately. A distance error of 0.5mm could produce SAR errors of 6% at 1800 MHz. Using predefined locations for measurements is not accurate enough. Any shift of the phantom (e.g., slight deformations after filling it with liquid) would produce high uncertainties. For an automatic and accurate detection of the phantom surface, the DASY5 system uses the mechanical surface detection. The detection is always at touch, but the probe will move backward from the surface the indicated distance before starting the measurement.
- The „area scan“ measures the SAR above the DUT or verification dipole on a parallel plane to the surface. It is used to locate the approximate location of the peak SAR with 2D spline interpolation. The robot performs a stepped movement along one grid axis while the local electrical field strength is measured by the probe. The probe is touching the surface of the SAM during acquisition of measurement values. The scan uses different grid spacings for different frequency measurements. Standard grid spacing for head measurements in frequency ranges  $\leq 2$ GHz is 15 mm in x- and y-dimension. For higher frequencies a finer resolution is needed, thus for the grid spacing is reduced according the following table:

Area scan grid spacing for different frequency ranges	
Frequency range	Grid spacing
$\leq 2$ GHz	$\leq 15$ mm
2 – 4 GHz	$\leq 12$ mm
4 – 6 GHz	$\leq 10$ mm

Grid spacing and orientation have no influence on the SAR result. For special applications where the standard scan method does not find the peak SAR within the grid, e.g. mobile phones with flip cover, the grid can be adapted in orientation. Results of this coarse scan are shown in annex B.

- A „zoom scan“ measures the field in a volume around the 2D peak SAR value acquired in the previous „coarse“ scan. It uses a fine meshed grid where the robot moves the probe in steps along all the 3 axis (x,y and z-axis) starting at the bottom of the Phantom. The grid spacing for the cube measurement is varied according to the measured frequency range, the dimensions are given in the following table:

Zoom scan grid spacing and volume for different frequency ranges			
Frequency range	Grid spacing for x, y axis	Grid spacing for z axis	Minimum zoom scan volume
$\leq 2$ GHz	$\leq 8$ mm	$\leq 5$ mm	$\geq 30$ mm
2 – 3 GHz	$\leq 5$ mm	$\leq 5$ mm	$\geq 28$ mm
3 – 4 GHz	$\leq 5$ mm	$\leq 4$ mm	$\geq 28$ mm
4 – 5 GHz	$\leq 4$ mm	$\leq 3$ mm	$\geq 25$ mm
5 – 6 GHz	$\leq 4$ mm	$\leq 2$ mm	$\geq 22$ mm

DASY is also able to perform repeated zoom scans if more than 1 peak is found during area scan. In this document, the evaluated peak 1g and 10g averaged SAR values are shown in the 2D-graphics in annex B. Test results relevant for the specified standard (see section 3) are shown in table form in section 7.

### 6.1.7 Spatial Peak SAR Evaluation

The spatial peak SAR - value for 1 and 10 g is evaluated after the Cube measurements have been done. The basis of the evaluation are the SAR values measured at the points of the fine cube grid consisting of all points in the three directions x, y and z. The algorithm that finds the maximal averaged volume is separated into three different stages.

- The data between the dipole center of the probe and the surface of the phantom are extrapolated. This data cannot be measured since the center of the dipole is 1 to 2.7 mm away from the tip of the probe and the distance between the surface and the lowest measuring point is about 1 mm (see probe calibration sheet). The extrapolated data from a cube measurement can be visualized by selecting 'Graph Evaluated'.
- The maximum interpolated value is searched with a straight-forward algorithm. Around this maximum the SAR - values averaged over the spatial volumes (1g or 10 g) are computed using the 3d-spline interpolation algorithm. If the volume cannot be evaluated (i.e., if a part of the grid was cut off by the boundary of the measurement area) the evaluation will be started on the corners of the bottom plane of the cube.
- All neighbouring volumes are evaluated until no neighbouring volume with a higher average value is found.

#### Extrapolation

The extrapolation is based on a least square algorithm [W. Gander, Computermathematik, p.168-180]. Through the points in the first 3 cm along the z-axis, polynomials of order four are calculated. These polynomials are then used to evaluate the points between the surface and the probe tip. The points, calculated from the surface, have a distance of 1 mm from each other.

#### Interpolation

The interpolation of the points is done with a 3d-Spline. The 3d-Spline is composed of three one-dimensional splines with the "Not a knot"-condition [W. Gander, Computermathematik, p.141-150] (x, y and z -direction) [Numerical Recipes in C, Second Edition, p.123ff ].

#### Volume Averaging

At First the size of the cube is calculated. Then the volume is integrated with the trapezoidal algorithm. 8000 points (20x20x20) are interpolated to calculate the average.

#### Advanced Extrapolation

DASY uses the advanced extrapolation option which is able to compensate boundary effects on E-field probes.

## 6.1.8 Data Storage and Evaluation

### Data Storage

The DASY software stores the acquired data from the data acquisition electronics as raw data (in microvolt readings from the probe sensors), together with all necessary software parameters for the data evaluation (probe calibration data, liquid parameters and device frequency and modulation data) in measurement files with the extension ".DA4", ".DA5x". The software evaluates the desired unit and format for output each time the data is visualized or exported. This allows verification of the complete software setup even after the measurement and allows correction of incorrect parameter settings. For example, if a measurement has been performed with a wrong crest factor parameter in the device setup, the parameter can be corrected afterwards and the data can be re-evaluated.

The measured data can be visualized or exported in different units or formats, depending on the selected probe type ([V/m], [A/m], [°C], [mW/g], [mW/cm²], [dBrel], etc.). Some of these units are not available in certain situations or show meaningless results, e.g., a SAR output in a lossless media will always be zero. Raw data can also be exported to perform the evaluation with other software packages.

### Data Evaluation by SEMCAD

The SEMCAD software automatically executes the following procedures to calculate the field units from the microvolt readings at the probe connector. The parameters used in the evaluation are stored in the configuration modules of the software:

Probe parameters:	- Sensitivity	$\text{Norm}_i, a_{i0}, a_{i1}, a_{i2}$
	- Conversion factor	$\text{ConvF}_i$
	- Diode compression point	$\text{Dcpi}$
Device parameters:	- Frequency	$f$
	- Crest factor	$cf$
Media parameters:	- Conductivity	$\sigma$
	- Density	$\rho$

These parameters must be set correctly in the software. They can be found in the component documents or they can be imported into the software from the configuration files issued for the DASY components. In the direct measuring mode of the multimeter option, the parameters of the actual system setup are used. In the scan visualization and export modes, the parameters stored in the corresponding document files are used.

The first step of the evaluation is a linearization of the filtered input signal to account for the compression characteristics of the detector diode. The compensation depends on the input signal, the diode type and the DC-transmission factor from the diode to the evaluation electronics.

If the exciting field is pulsed, the crest factor of the signal must be known to correctly compensate for peak power. The formula for each channel can be given as:

$$V_i = U_i + U_i^2 \cdot cf/dcp_i$$

with  $V_i$  = compensated signal of channel i (i = x, y, z)  
 $U_i$  = input signal of channel i (i = x, y, z)  
 $cf$  = crest factor of exciting field (DASY parameter)  
 $dcp_i$  = diode compression point (DASY parameter)

From the compensated input signals the primary field data for each channel can be evaluated:

E-field probes:  $E_i = (V_i / Norm_i \cdot ConvF)^{1/2}$

H-field probes:  $H_i = (V_i)^{1/2} \cdot (a_{i0} + a_{i1}f + a_{i2}f^2)/f$

with  $V_i$  = compensated signal of channel i (i = x, y, z)  
 $Norm_i$  = sensor sensitivity of channel i (i = x, y, z)  
[mV/(V/m)<sup>2</sup>] for E-field Probes  
 $ConvF$  = sensitivity enhancement in solution  
 $a_{ij}$  = sensor sensitivity factors for H-field probes  
 $f$  = carrier frequency [GHz]  
 $E_i$  = electric field strength of channel i in V/m  
 $H_i$  = magnetic field strength of channel i in A/m

The RSS value of the field components gives the total field strength (Hermitian magnitude):

$$E_{tot} = (E_x^2 + E_y^2 + E_z^2)^{1/2}$$

The primary field data are used to calculate the derived field units.

$$SAR = (E_{tot}^2 \cdot \sigma) / (\rho \cdot 1000)$$

with  $SAR$  = local specific absorption rate in mW/g  
 $E_{tot}$  = total field strength in V/m  
 $\sigma$  = conductivity in [mho/m] or [Siemens/m]  
 $\rho$  = equivalent tissue density in g/cm<sup>3</sup>

Note that the density is normally set to 1 (or 1.06), to account for actual brain density rather than the density of the simulation liquid. The power flow density is calculated assuming the excitation field to be a free space field.

$$P_{pwe} = E_{tot}^2 / 3770 \quad \text{or} \quad P_{pwe} = H_{tot}^2 \cdot 37.7$$

with  $P_{pwe}$  = equivalent power density of a plane wave in mW/cm<sup>2</sup>  
 $E_{tot}$  = total electric field strength in V/m  
 $H_{tot}$  = total magnetic field strength in A/m

### 6.1.9 Tissue simulating liquids: dielectric properties

The following materials are used for producing the tissue-equivalent materials.

(Liquids used for tests described in section 7. are marked with ☒) :

Ingredients (% of weight)	Frequency (MHz)								
	<input type="checkbox"/> 450	<input type="checkbox"/> 750	<input type="checkbox"/> 835	<input type="checkbox"/> 900	<input type="checkbox"/> 1450	<input type="checkbox"/> 1750	<input type="checkbox"/> 1900	<input checked="" type="checkbox"/> 2450	<input type="checkbox"/> 5000
frequency band									
Water	51.16	51.7	52.4	56.0	71.40	71.45	71.56	71.65	64 - 78
Salt (NaCl)	1.49	0.9	1.40	0.76	0.55	0.5	0.39	0.3	2 - 3
Sugar	46.78	47.2	45.0	41.76	0.0	0.0	0.0	0.0	0.0
HEC	0.52	0.0	1.0	1.21	0.0	0.0	0.0	0.0	0.0
Bactericide	0.05	0.1	0.1	0.27	0.1	0.1	0.1	0.1	0.0
Tween 20	0.0	0.0	0.0	0.0	27.95	27.95	27.95	27.95	0.0
Emulsifiers	0.0	0.0	0.0	0.0	0.0	0.0	0.0	0.0	9 - 15
Mineral Oil	0.0	0.0	0.0	0.0	0.0	0.0	0.0	0.0	11 - 18

Table 2: Body tissue dielectric properties

Salt: 99+% Pure Sodium Chloride

Water: De-ionized, 16MΩ+ resistivity

Sugar: 98+% Pure Sucrose

HEC: Hydroxyethyl Cellulose

Tween 20: Polyoxyethylene (20) sorbitan monolaurate

### 6.1.10 Tissue simulating liquids: parameters

Liquid MSL	Freq. (MHz)	Target head tissue		Measurement <b>body</b> tissue					Measurement date
		Permittivity	Conductivity (S/m)	Permittivity	Dev.	Conductivity		Dev.	
						ε"	(S/m)		
2450	2402	52.76	1.90	50.6	-4.0%	14.64	1.96	2.7%	2014-12-01
	2440	52.71	1.94	50.4	-4.4%	14.78	2.01	3.4%	
	2450	52.70	1.95	50.4	-4.3%	14.78	2.01	3.3%	
	2480	52.66	1.98	50.4	-4.2%	14.96	2.06	4.3%	

Table 3: Parameter of the body tissue simulating liquid

Note: The dielectric properties have been measured using the contact probe method at 22°C.



### 6.1.11 Measurement uncertainty evaluation for SAR test

Relative DASY5 Uncertainty Budget for SAR Tests								
According to IEEE 1528/2011 and IEC62209-1/2011 (0.3-3GHz range)								
Error Description	Uncertainty Value	Probability Distribution	Divisor	$c_i$ (1g)	$c_i$ (10g)	Standard Uncertainty		$v_i^2$ or $v_{eff}$
						± %, (1g)	± %, (10g)	
<b>Measurement System</b>								
Probe calibration	± 6.0 %	Normal	1	1	1	± 6.0 %	± 6.0 %	∞
Axial isotropy	± 4.7 %	Rectangular	√ 3	0.7	0.7	± 1.9 %	± 1.9 %	∞
Hemispherical isotropy	± 9.6 %	Rectangular	√ 3	0.7	0.7	± 3.9 %	± 3.9 %	∞
Boundary effects	± 1.0 %	Rectangular	√ 3	1	1	± 0.6 %	± 0.6 %	∞
Probe linearity	± 4.7 %	Rectangular	√ 3	1	1	± 2.7 %	± 2.7 %	∞
System detection limits	± 1.0 %	Rectangular	√ 3	1	1	± 0.6 %	± 0.6 %	∞
Modulation Response	± 2.4 %	Rectangular	√ 3	1	1	± 1.4 %	± 1.4 %	∞
Readout electronics	± 0.3 %	Normal	1	1	1	± 0.3 %	± 0.3 %	∞
Response time	± 0.8 %	Rectangular	√ 3	1	1	± 0.5 %	± 0.5 %	∞
Integration time	± 2.6 %	Rectangular	√ 3	1	1	± 1.5 %	± 1.5 %	∞
RF ambient noise	± 3.0 %	Rectangular	√ 3	1	1	± 1.7 %	± 1.7 %	∞
RF ambient reflections	± 3.0 %	Rectangular	√ 3	1	1	± 1.7 %	± 1.7 %	∞
Probe positioner	± 0.4 %	Rectangular	√ 3	1	1	± 0.2 %	± 0.2 %	∞
Probe positioning	± 2.9 %	Rectangular	√ 3	1	1	± 1.7 %	± 1.7 %	∞
Max. SAR evaluation	± 2.0 %	Rectangular	√ 3	1	1	± 1.2 %	± 1.2 %	∞
<b>Test Sample Related</b>								
Device positioning	± 2.9 %	Normal	1	1	1	± 2.9 %	± 2.9 %	145
Device holder uncertainty	± 3.6 %	Normal	1	1	1	± 3.6 %	± 3.6 %	5
Power drift	± 5.0 %	Rectangular	√ 3	1	1	± 2.9 %	± 2.9 %	∞
<b>Phantom and Set-up</b>								
Phantom uncertainty	± 6.1 %	Rectangular	√ 3	1	1	± 3.5 %	± 3.5 %	∞
SAR correction	± 1.9 %	Rectangular	√ 3	1	0.84	± 1.1 %	± 0.9 %	∞
Liquid conductivity (meas.)	± 5.0 %	Rectangular	√ 3	0.78	0.71	± 2.3 %	± 2.0 %	∞
Liquid permittivity (meas.)	± 5.0 %	Rectangular	√ 3	0.26	0.26	± 0.8 %	± 0.8 %	∞
Temp. Unc. - Conductivity	± 3.4 %	Rectangular	√ 3	0.78	0.71	± 1.5 %	± 1.4 %	∞
Temp. Unc. - Permittivity	± 0.4 %	Rectangular	√ 3	0.23	0.26	± 0.1 %	± 0.1 %	∞
<b>Combined Uncertainty</b>						± 11.3 %	± 11.3 %	330
<b>Expanded Std. Uncertainty</b>						± 22.7 %	± 22.5 %	

Table 4: Measurement uncertainties

Worst-Case uncertainty budget for DASY5 assessed according to IEEE 1528/2011 and IEC 62209-1/2011 draft standards. The budget is valid for the frequency range 300MHz -3 GHz and represents a worst-case analysis. For specific tests and configurations, the uncertainty could be considerable smaller.

Relative DASY5 Uncertainty Budget for SAR Tests								
According to IEC62209-2/2010 (30 MHz - 6 GHz range)								
Error Description	Uncertainty Value	Probability Distribution	Divisor	$C_i$ (1g)	$C_i$ (10g)	Standard Uncertainty		$v_i^2$ or $v_{eff}$
						$\pm \%$ , (1g)	$\pm \%$ , (10g)	
<b>Measurement System</b>								
Probe calibration	$\pm 6.6 \%$	Normal	1	1	1	$\pm 6.6 \%$	$\pm 6.6 \%$	$\infty$
Axial isotropy	$\pm 4.7 \%$	Rectangular	$\sqrt{3}$	0.7	0.7	$\pm 1.9 \%$	$\pm 1.9 \%$	$\infty$
Hemispherical isotropy	$\pm 9.6 \%$	Rectangular	$\sqrt{3}$	0.7	0.7	$\pm 3.9 \%$	$\pm 3.9 \%$	$\infty$
Boundary effects	$\pm 2.0 \%$	Rectangular	$\sqrt{3}$	1	1	$\pm 1.2 \%$	$\pm 1.2 \%$	$\infty$
Probe linearity	$\pm 4.7 \%$	Rectangular	$\sqrt{3}$	1	1	$\pm 2.7 \%$	$\pm 2.7 \%$	$\infty$
System detection limits	$\pm 1.0 \%$	Rectangular	$\sqrt{3}$	1	1	$\pm 0.6 \%$	$\pm 0.6 \%$	$\infty$
Modulation Response	$\pm 2.4 \%$	Rectangular	$\sqrt{3}$	1	1	$\pm 1.4 \%$	$\pm 1.4 \%$	$\infty$
Readout electronics	$\pm 0.3 \%$	Normal	1	1	1	$\pm 0.3 \%$	$\pm 0.3 \%$	$\infty$
Response time	$\pm 0.8 \%$	Rectangular	$\sqrt{3}$	1	1	$\pm 0.5 \%$	$\pm 0.5 \%$	$\infty$
Integration time	$\pm 2.6 \%$	Rectangular	$\sqrt{3}$	1	1	$\pm 1.5 \%$	$\pm 1.5 \%$	$\infty$
RF ambient noise	$\pm 3.0 \%$	Rectangular	$\sqrt{3}$	1	1	$\pm 1.7 \%$	$\pm 1.7 \%$	$\infty$
RF ambient reflections	$\pm 3.0 \%$	Rectangular	$\sqrt{3}$	1	1	$\pm 1.7 \%$	$\pm 1.7 \%$	$\infty$
Probe positioner	$\pm 0.8 \%$	Rectangular	$\sqrt{3}$	1	1	$\pm 0.5 \%$	$\pm 0.5 \%$	$\infty$
Probe positioning	$\pm 6.7 \%$	Rectangular	$\sqrt{3}$	1	1	$\pm 3.9 \%$	$\pm 3.9 \%$	$\infty$
Post-processing	$\pm 4.0 \%$	Rectangular	$\sqrt{3}$	1	1	$\pm 2.3 \%$	$\pm 2.3 \%$	$\infty$
<b>Test Sample Related</b>								
Device positioning	$\pm 2.9 \%$	Normal	1	1	1	$\pm 2.9 \%$	$\pm 2.9 \%$	145
Device holder uncertainty	$\pm 3.6 \%$	Normal	1	1	1	$\pm 3.6 \%$	$\pm 3.6 \%$	5
Power drift	$\pm 5.0 \%$	Rectangular	$\sqrt{3}$	1	1	$\pm 2.9 \%$	$\pm 2.9 \%$	$\infty$
<b>Phantom and Set-up</b>								
Phantom uncertainty	$\pm 7.9 \%$	Rectangular	$\sqrt{3}$	1	1	$\pm 4.6 \%$	$\pm 4.6 \%$	$\infty$
SAR correction	$\pm 1.9 \%$	Rectangular	$\sqrt{3}$	1	0.84	$\pm 1.1 \%$	$\pm 0.9 \%$	$\infty$
Liquid conductivity (meas.)	$\pm 5.0 \%$	Rectangular	$\sqrt{3}$	0.78	0.71	$\pm 2.3 \%$	$\pm 2.0 \%$	$\infty$
Liquid permittivity (meas.)	$\pm 5.0 \%$	Rectangular	$\sqrt{3}$	0.26	0.26	$\pm 0.8 \%$	$\pm 0.8 \%$	$\infty$
Temp. Unc. - Conductivity	$\pm 3.4 \%$	Rectangular	$\sqrt{3}$	0.78	0.71	$\pm 1.5 \%$	$\pm 1.4 \%$	$\infty$
Temp. Unc. - Permittivity	$\pm 0.4 \%$	Rectangular	$\sqrt{3}$	0.23	0.26	$\pm 0.1 \%$	$\pm 0.1 \%$	$\infty$
<b>Combined Uncertainty</b>						$\pm 12.7 \%$	$\pm 12.6 \%$	330
<b>Expanded Std. Uncertainty</b>						$\pm 25.4 \%$	$\pm 25.3 \%$	

Table 5: Measurement uncertainties. Worst-Case uncertainty budget for DASY5 assessed according to according to IEC 62209-2/2010 standard. The budget is valid for the frequency range 30MHz - 6 GHz and represents a worst-case analysis. For specific tests and configurations, the uncertainty could be considerable smaller.

Relative DASY5 Uncertainty Budget for SAR Tests								
According to IEEE 1528-2003, IEC 62209-1 for the 3-6 GHz range								
Error Description	Uncertainty Value	Probability Distribution	Divisor	$c_i$ (1g)	$c_i$ (10g)	Standard Uncertainty		$v_i^2$ or $v_{eff}$
						$\pm \%$ , (1g)	$\pm \%$ , (10g)	
<b>Measurement System</b>								
Probe calibration	$\pm 6.6 \%$	Normal	1	1	1	$\pm 6.6 \%$	$\pm 6.6 \%$	$\infty$
Axial isotropy	$\pm 4.7 \%$	Rectangular	$\sqrt{3}$	0.7	0.7	$\pm 1.9 \%$	$\pm 1.9 \%$	$\infty$
Hemispherical isotropy	$\pm 9.6 \%$	Rectangular	$\sqrt{3}$	0.7	0.7	$\pm 3.9 \%$	$\pm 3.9 \%$	$\infty$
Boundary effects	$\pm 2.0 \%$	Rectangular	$\sqrt{3}$	1	1	$\pm 1.2 \%$	$\pm 1.2 \%$	$\infty$
Probe linearity	$\pm 4.7 \%$	Rectangular	$\sqrt{3}$	1	1	$\pm 2.7 \%$	$\pm 2.7 \%$	$\infty$
System detection limits	$\pm 1.0 \%$	Rectangular	$\sqrt{3}$	1	1	$\pm 0.6 \%$	$\pm 0.6 \%$	$\infty$
Readout electronics	$\pm 0.3 \%$	Normal	1	1	1	$\pm 0.3 \%$	$\pm 0.3 \%$	$\infty$
Response time	$\pm 0.8 \%$	Rectangular	$\sqrt{3}$	1	1	$\pm 0.5 \%$	$\pm 0.5 \%$	$\infty$
Integration time	$\pm 2.6 \%$	Rectangular	$\sqrt{3}$	1	1	$\pm 1.5 \%$	$\pm 1.5 \%$	$\infty$
RF ambient noise	$\pm 3.0 \%$	Rectangular	$\sqrt{3}$	1	1	$\pm 1.7 \%$	$\pm 1.7 \%$	$\infty$
RF ambient reflections	$\pm 3.0 \%$	Rectangular	$\sqrt{3}$	1	1	$\pm 1.7 \%$	$\pm 1.7 \%$	$\infty$
Probe positioner	$\pm 0.8 \%$	Rectangular	$\sqrt{3}$	1	1	$\pm 0.5 \%$	$\pm 0.5 \%$	$\infty$
Probe positioning	$\pm 6.7 \%$	Rectangular	$\sqrt{3}$	1	1	$\pm 3.9 \%$	$\pm 3.9 \%$	$\infty$
Max. SAR evaluation	$\pm 4.0 \%$	Rectangular	$\sqrt{3}$	1	1	$\pm 2.3 \%$	$\pm 2.3 \%$	$\infty$
<b>Test Sample Related</b>								
Device positioning	$\pm 2.9 \%$	Normal	1	1	1	$\pm 2.9 \%$	$\pm 2.9 \%$	145
Device holder uncertainty	$\pm 3.6 \%$	Normal	1	1	1	$\pm 3.6 \%$	$\pm 3.6 \%$	5
Power drift	$\pm 5.0 \%$	Rectangular	$\sqrt{3}$	1	1	$\pm 2.9 \%$	$\pm 2.9 \%$	$\infty$
<b>Phantom and Set-up</b>								
Phantom uncertainty	$\pm 4.0 \%$	Rectangular	$\sqrt{3}$	1	1	$\pm 2.3 \%$	$\pm 2.3 \%$	$\infty$
Liquid conductivity (target)	$\pm 5.0 \%$	Rectangular	$\sqrt{3}$	0.64	0.43	$\pm 1.8 \%$	$\pm 1.2 \%$	$\infty$
Liquid conductivity (meas.)	$\pm 5.0 \%$	Rectangular	$\sqrt{3}$	0.64	0.43	$\pm 1.8 \%$	$\pm 1.2 \%$	$\infty$
Liquid permittivity (target)	$\pm 5.0 \%$	Rectangular	$\sqrt{3}$	0.6	0.49	$\pm 1.7 \%$	$\pm 1.4 \%$	$\infty$
Liquid permittivity (meas.)	$\pm 5.0 \%$	Rectangular	$\sqrt{3}$	0.6	0.49	$\pm 1.7 \%$	$\pm 1.4 \%$	$\infty$
<b>Combined Uncertainty</b>						$\pm 12.1 \%$	$\pm 11.9 \%$	330
<b>Expanded Std. Uncertainty</b>						$\pm 24.3 \%$	$\pm 23.8 \%$	

Table 6: Measurement uncertainties

Worst-Case uncertainty budget for DASY5 valid for 3G communication signals and frequency range 3 - 6 GHz.

Probe calibration error reflects uncertainty of the EX3D probe. For specific tests and configurations, the uncertainty could be considerable smaller.

Relative DASY5 Uncertainty Budget for SAR Tests								
According to IEEE 1528/2011 and IEC62209-1/2011 (3-6GHz range)								
Error Description	Uncertainty Value	Probability Distribution	Divisor	$C_i$ (1g)	$C_i$ (10g)	Standard Uncertainty		$v_i^2$ or $v_{eff}$
						$\pm \%$ , (1g)	$\pm \%$ , (10g)	
<b>Measurement System</b>								
Probe calibration	$\pm 6.6 \%$	Normal	1	1	1	$\pm 6.6 \%$	$\pm 6.6 \%$	$\infty$
Axial isotropy	$\pm 4.7 \%$	Rectangular	$\sqrt{3}$	0.7	0.7	$\pm 1.9 \%$	$\pm 1.9 \%$	$\infty$
Hemispherical isotropy	$\pm 9.6 \%$	Rectangular	$\sqrt{3}$	0.7	0.7	$\pm 3.9 \%$	$\pm 3.9 \%$	$\infty$
Boundary effects	$\pm 2.0 \%$	Rectangular	$\sqrt{3}$	1	1	$\pm 1.2 \%$	$\pm 1.2 \%$	$\infty$
Probe linearity	$\pm 4.7 \%$	Rectangular	$\sqrt{3}$	1	1	$\pm 2.7 \%$	$\pm 2.7 \%$	$\infty$
System detection limits	$\pm 1.0 \%$	Rectangular	$\sqrt{3}$	1	1	$\pm 0.6 \%$	$\pm 0.6 \%$	$\infty$
Modulation Response	$\pm 2.4 \%$	Rectangular	$\sqrt{3}$	1	1	$\pm 1.4 \%$	$\pm 1.4 \%$	$\infty$
Readout electronics	$\pm 0.3 \%$	Normal	1	1	1	$\pm 0.3 \%$	$\pm 0.3 \%$	$\infty$
Response time	$\pm 0.8 \%$	Rectangular	$\sqrt{3}$	1	1	$\pm 0.5 \%$	$\pm 0.5 \%$	$\infty$
Integration time	$\pm 2.6 \%$	Rectangular	$\sqrt{3}$	1	1	$\pm 1.5 \%$	$\pm 1.5 \%$	$\infty$
RF ambient noise	$\pm 3.0 \%$	Rectangular	$\sqrt{3}$	1	1	$\pm 1.7 \%$	$\pm 1.7 \%$	$\infty$
RF ambient reflections	$\pm 3.0 \%$	Rectangular	$\sqrt{3}$	1	1	$\pm 1.7 \%$	$\pm 1.7 \%$	$\infty$
Probe positioner	$\pm 0.8 \%$	Rectangular	$\sqrt{3}$	1	1	$\pm 0.5 \%$	$\pm 0.5 \%$	$\infty$
Probe positioning	$\pm 6.7 \%$	Rectangular	$\sqrt{3}$	1	1	$\pm 3.9 \%$	$\pm 3.9 \%$	$\infty$
Max. SAR evaluation	$\pm 4.0 \%$	Rectangular	$\sqrt{3}$	1	1	$\pm 2.3 \%$	$\pm 2.3 \%$	$\infty$
<b>Test Sample Related</b>								
Device positioning	$\pm 2.9 \%$	Normal	1	1	1	$\pm 2.9 \%$	$\pm 2.9 \%$	145
Device holder uncertainty	$\pm 3.6 \%$	Normal	1	1	1	$\pm 3.6 \%$	$\pm 3.6 \%$	5
Power drift	$\pm 5.0 \%$	Rectangular	$\sqrt{3}$	1	1	$\pm 2.9 \%$	$\pm 2.9 \%$	$\infty$
<b>Phantom and Set-up</b>								
Phantom uncertainty	$\pm 6.6 \%$	Rectangular	$\sqrt{3}$	1	1	$\pm 3.8 \%$	$\pm 3.8 \%$	$\infty$
SAR correction	$\pm 1.9 \%$	Rectangular	$\sqrt{3}$	1	0.84	$\pm 1.1 \%$	$\pm 0.9 \%$	$\infty$
Liquid conductivity (meas.)	$\pm 5.0 \%$	Rectangular	$\sqrt{3}$	0.78	0.71	$\pm 2.3 \%$	$\pm 2.0 \%$	$\infty$
Liquid permittivity (meas.)	$\pm 5.0 \%$	Rectangular	$\sqrt{3}$	0.26	0.26	$\pm 0.8 \%$	$\pm 0.8 \%$	$\infty$
Temp. Unc. - Conductivity	$\pm 3.4 \%$	Rectangular	$\sqrt{3}$	0.78	0.71	$\pm 1.5 \%$	$\pm 1.4 \%$	$\infty$
Temp. Unc. - Permittivity	$\pm 0.4 \%$	Rectangular	$\sqrt{3}$	0.23	0.26	$\pm 0.1 \%$	$\pm 0.1 \%$	$\infty$
<b>Combined Uncertainty</b>						$\pm 12.4 \%$	$\pm 12.4 \%$	330
<b>Expanded Std. Uncertainty</b>						$\pm 24.9 \%$	$\pm 24.8 \%$	

Table 7: Measurement uncertainties

Worst-Case uncertainty budget for DASY5 assessed according to IEEE 1528/2011 and IEC 62209-1/2011 draft standards. The budget is valid for the frequency range 3GHz -6GHz and represents a worst-case analysis. For specific tests and configurations, the uncertainty could be considerable smaller.

## 6.1.12 Measurement uncertainty evaluation for System Check

Uncertainty of a System Performance Check with DASY5 System for the 0.3 - 3 GHz range								
Source of uncertainty	Uncertainty Value	Probability Distribution	Divisor	c <sub>i</sub>	c <sub>i</sub>	Standard Uncertainty		v <sub>i</sub> <sup>2</sup> or
				(1g)	(10g)	± %, (1g)	± %, (10g)	v <sub>eff</sub>
Measurement System								
Probe calibration	± 6.0 %	Normal	1	1	1	± 6.0 %	± 6.0 %	∞
Axial isotropy	± 4.7 %	Rectangular	√ 3	0.7	0.7	± 1.9 %	± 1.9 %	∞
Hemispherical isotropy	± 0.0 %	Rectangular	√ 3	0.7	0.7	± 0.0 %	± 0.0 %	∞
Boundary effects	± 1.0 %	Rectangular	√ 3	1	1	± 0.6 %	± 0.6 %	∞
Probe linearity	± 4.7 %	Rectangular	√ 3	1	1	± 2.7 %	± 2.7 %	∞
System detection limits	± 1.0 %	Rectangular	√ 3	1	1	± 0.6 %	± 0.6 %	∞
Readout electronics	± 0.3 %	Normal	1	1	1	± 0.3 %	± 0.3 %	∞
Response time	± 0.0 %	Rectangular	√ 3	1	1	± 0.0 %	± 0.0 %	∞
Integration time	± 0.0 %	Rectangular	√ 3	1	1	± 0.0 %	± 0.0 %	∞
RF ambient conditions	± 3.0 %	Rectangular	√ 3	1	1	± 1.7 %	± 1.7 %	∞
Probe positioner	± 0.4 %	Rectangular	√ 3	1	1	± 0.2 %	± 0.2 %	∞
Probe positioning	± 2.9 %	Rectangular	√ 3	1	1	± 1.7 %	± 1.7 %	∞
Max. SAR evaluation	± 1.0 %	Rectangular	√ 3	1	1	± 0.6 %	± 0.6 %	∞
Test Sample Related								
Dev. of experimental dipole	± 0.0 %	Rectangular	√ 3	1	1	± 0.0 %	± 0.0 %	∞
Source to liquid distance	± 2.0 %	Rectangular	√ 3	1	1	± 1.2 %	± 1.2 %	∞
Power drift	± 3.4 %	Rectangular	√ 3	1	1	± 2.0 %	± 2.0 %	∞
Phantom and Set-up								
Phantom uncertainty	± 4.0 %	Rectangular	√ 3	1	1	± 2.3 %	± 2.3 %	∞
SAR correction	± 1.9 %	Rectangular	√ 3	1	0.84	± 1.1 %	± 0.9 %	∞
Liquid conductivity (meas.)	± 5.0 %	Normal	1	0.78	0.71	± 3.9 %	± 3.6 %	∞
Liquid permittivity (meas.)	± 5.0 %	Normal	1	0.26	0.26	± 1.3 %	± 1.3 %	∞
Temp. unc. - Conductivity	± 1.7 %	Rectangular	√ 3	0.78	0.71	± 0.8 %	± 0.7 %	∞
Temp. unc. - Permittivity	± 0.3 %	Rectangular	√ 3	0.23	0.26	± 0.0 %	± 0.0 %	∞
Combined Uncertainty						± 9.1 %	± 8.9 %	330
Expanded Std. Uncertainty						± 18.2 %	± 17.9 %	

Table 8: Measurement uncertainties of the System Check with DASY5 (0.3-3GHz)

Uncertainty of a System Performance Check with DASY5 System for the 3 - 6 GHz range								
Source of uncertainty	Uncertainty Value	Probability Distribution	Divisor	c <sub>i</sub>	c <sub>i</sub>	Standard Uncertainty		v <sub>i</sub> <sup>2</sup> or
				(1g)	(10g)	± %, (1g)	± %, (10g)	v <sub>eff</sub>
Measurement System								
Probe calibration	± 6.6 %	Normal	1	1	1	± 6.6 %	± 6.6 %	∞
Axial isotropy	± 4.7 %	Rectangular	√ 3	0.7	0.7	± 1.9 %	± 1.9 %	∞
Hemispherical isotropy	± 0.0 %	Rectangular	√ 3	0.7	0.7	± 0.0 %	± 0.0 %	∞
Boundary effects	± 1.0 %	Rectangular	√ 3	1	1	± 0.6 %	± 0.6 %	∞
Probe linearity	± 4.7 %	Rectangular	√ 3	1	1	± 2.7 %	± 2.7 %	∞
System detection limits	± 1.0 %	Rectangular	√ 3	1	1	± 0.6 %	± 0.6 %	∞
Readout electronics	± 0.3 %	Normal	1	1	1	± 0.3 %	± 0.3 %	∞
Response time	± 0.0 %	Rectangular	√ 3	1	1	± 0.0 %	± 0.0 %	∞
Integration time	± 0.0 %	Rectangular	√ 3	1	1	± 0.0 %	± 0.0 %	∞
RF ambient conditions	± 3.0 %	Rectangular	√ 3	1	1	± 1.7 %	± 1.7 %	∞
Probe positioner	± 0.8 %	Rectangular	√ 3	1	1	± 0.5 %	± 0.5 %	∞
Probe positioning	± 6.7 %	Rectangular	√ 3	1	1	± 3.9 %	± 3.9 %	∞
Max. SAR evaluation	± 1.0 %	Rectangular	√ 3	1	1	± 0.6 %	± 0.6 %	∞
Test Sample Related								
Dev. of experimental dipole	± 0.0 %	Rectangular	√ 3	1	1	± 0.0 %	± 0.0 %	∞
Source to liquid distance	± 2.0 %	Rectangular	√ 3	1	1	± 1.2 %	± 1.2 %	∞
Power drift	± 3.4 %	Rectangular	√ 3	1	1	± 2.0 %	± 2.0 %	∞
Phantom and Set-up								
Phantom uncertainty	± 4.0 %	Rectangular	√ 3	1	1	± 2.3 %	± 2.3 %	∞
SAR correction	± 1.9 %	Rectangular	√ 3	1	0.84	± 1.1 %	± 0.9 %	∞
Liquid conductivity (meas.)	± 5.0 %	Normal	1	0.78	0.71	± 3.9 %	± 3.6 %	∞
Liquid permittivity (meas.)	± 5.0 %	Normal	1	0.26	0.26	± 1.3 %	± 1.3 %	∞
Temp. unc. - Conductivity	± 1.7 %	Rectangular	√ 3	0.78	0.71	± 0.8 %	± 0.7 %	∞
Temp. unc. - Permittivity	± 0.3 %	Rectangular	√ 3	0.23	0.26	± 0.0 %	± 0.0 %	∞
Combined Uncertainty						± 10.1 %	± 10.0 %	330
Expanded Std. Uncertainty						± 20.2 %	± 19.9 %	

Table 9: Measurement uncertainties of the System Check with DASY5 (3-6GHz)

Note: Worst case probe calibration uncertainty has been applied for all probes used during the measurements.

### 6.1.13 System check

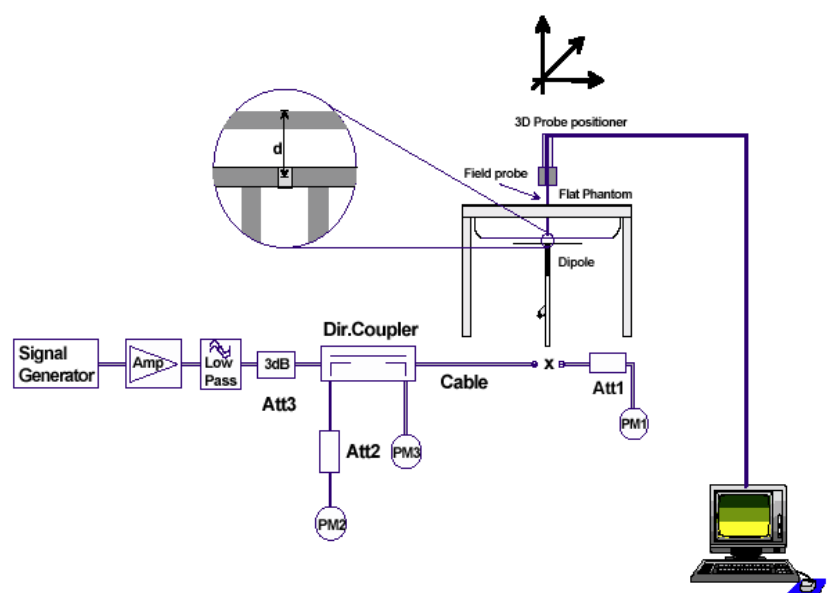
The system check is performed for verifying the accuracy of the complete measurement system and performance of the software. The system check is performed with tissue equivalent material according to IEEE 1528. The following table shows system check results for all frequency bands and tissue liquids used during the tests (plot(s) see annex A).

System performance check (1000 mW)								
System validation Kit	Frequency	Target SAR <sub>1g</sub> /mW/g (+/- 10%)	Target SAR <sub>10g</sub> /mW/g (+/- 10%)	Measured SAR <sub>1g</sub> / mW/g	SAR <sub>1g</sub> dev.	Measured SAR <sub>10g</sub> / mW/g	SAR <sub>10g</sub> dev.	Measured date
D2450V2 S/N: 710	2450 MHz body	51.00	23.80	53.30	4.5%	24.60	3.4%	2014-12-01
D2450V2 S/N: 710	2450 MHz body	51.00	23.80	52.40	2.7%	24.10	1.3%	2014-12-02

Table 10: Results system check

### 6.1.14 System check procedure

The system check is performed by using a validation dipole which is positioned parallel to the planar part of the SAM phantom at the reference point. The distance of the dipole to the SAM phantom is determined by a plexiglass spacer. The dipole is connected to the signal source consisting of signal generator and amplifier via a directional coupler, N-connector cable and adaption to SMA. It is fed with a power of 1000 mW for frequencies below 2 GHz or 100 mW for frequencies above 2 GHz. To adjust this power a power meter is used. The power sensor is connected to the cable before the system check to measure the power at this point and do adjustments at the signal generator. At the outputs of the directional coupler both return loss as well as forward power are controlled during the validation to make sure that emitted power at the dipole is kept constant. This can also be checked by the power drift measurement after the test (result on plot). System check results have to be equal or near the values determined during dipole calibration (target SAR in table above) with the relevant liquids and test system.



### 6.1.15 System validation

The system validation is performed in a similar way as a system check. It needs to be performed once a SAR measurement system has been established and allows an evaluation of the system accuracy with all components used together with the specified system. It has to be repeated at least once a year or when new system components are used (DAE, probe, phantom, dipole, liquid type).

In addition to the procedure used during system check a system validation also includes checks of probe isotropy, probe modulation factor and RF signal.

The following table lists the system validations relevant for this test report:

Frequency (MHz)	Test System	DASY SW	Dipole Type /SN	Probe Type / SN	Calibrated signal type(s)	DAE unit Type / SN	body validation
2450	Saarbrücken / SAR-2	V52.8.7	D2450V2 / 710	EX3DV4 / 3944	CW	DAE3/ 477	2014-09-17



## 7 Detailed Test Results

### 7.1 Conducted average power measurements Bluetooth 2.4 GHz

Channel	Frequency (MHz)	Average power (dBm)
		GFSK
0	2402	14.3
38	2440	<b>14.4</b>
78	2480	14.2

Table 11: Test results conducted average power measurement Bluetooth 2.4 GHz

### 7.2 SAR test results

#### 7.2.1 Results overview

measured / extrapolated SAR numbers - Head - Bluetooth 2450 MHz								
Ch.	Freq. (MHz)	Position	cond. P <sub>max</sub> (dBm)		SAR <sub>1g</sub> results(W/kg)		SAR <sub>10g</sub> (W/kg)	liquid (°C)
			declared**	measured	measured	extrapolated	measured	
0	2402	front	14.7	14.3	0.845	0.927	0.360	22.2
38	2440	front	14.7	14.4	1.100	1.179	0.470	22.2
78	2480	front	14.7	14.2	1.240	1.391	0.526	22.3
0	2402	rear	14.7	14.3	0.828	0.908	0.326	22.2
38	2440	rear	14.7	14.4	1.090	1.168	0.425	22.3
78	2480	rear	14.7	14.2	1.310	1.470	0.510	22.3
0	2402	left	14.7	14.3	0.889	0.975	0.395	22.2
38	2440	left	14.7	14.4	1.130	1.211	0.502	22.2
78	2480	left	14.7	14.2	1.180	1.324	0.522	22.3
0	2402	right	14.7	14.3	0.930	1.020	0.398	22.2
38	2440	right	14.7	14.4	1.170	1.254	0.497	22.3
78	2480	right	14.7	14.2	1.250	1.403	0.531	22.3
38	2440	top	14.7	14.4	0.207	0.222	0.099	22.2
38	2440	bottom	14.7	14.4	0.110	0.118	0.056	22.2
78	2480	rear*	14.7	14.2	<b>1.420</b>	<b>1.593</b>	<b>0.545</b>	22.3

Table 12: Test results body SAR BT 2450 MHz

\* - repeated at the highest SAR measurement according to the FCC KDB 865664

## 7.2.2 General description of test procedures

- The DUT is tested using manufacturer-software to control test channels and maximum output power of the DUT. Test positions as described in the tables above are in accordance with the specified test standard. Tests in body position were performed in that configuration, which generates the highest time based averaged output power (see conducted power results).
- According to IEEE 1528 the SAR test shall be performed at middle channel. Testing of top and bottom channel is optional.
- According to KDB 447498 D01 testing of other required channels within the operating mode of a frequency band is not required when the reported 1-g or 10-g SAR for the mid-band or highest output power channel is:
  - ≤ 0.8 W/kg or 2.0 W/kg, for 1-g or 10-g respectively, when the transmission band is ≤ 100 MHz
  - ≤ 0.6 W/kg or 1.5 W/kg, for 1-g or 10-g respectively, when the transmission band is between 100 MHz and 200 MHz
  - ≤ 0.4 W/kg or 1.0 W/kg, for 1-g or 10-g respectively, when the transmission band is ≥ 200 MHz
- IEEE 1528-2003 require the middle channel to be tested first. This generally applies to wireless devices that are designed to operate in technologies with tight tolerances for maximum output power variations across channels in the band. When the maximum output power variation across the required test channels is > ½ dB, instead of the middle channel, the highest output power channel must be used.

## 8 Test equipment and ancillaries used for tests

To simplify the identification of the test equipment and/or ancillaries which were used, the reporting of the relevant test cases only refer to the test item number as specified in the table below.

Equipment	Type	Manufacturer	Serial No.	Last Calibration	Frequency (months)
Dosimetric E-Field Probe	EX3DV4	Schmid & Partner Engineering AG	3944	August 19, 2014	12
2450 MHz System Validation Dipole	D2450V2	Schmid & Partner Engineering AG	710	August 11, 2014	24
Data acquisition electronics	DAE3V1	Schmid & Partner Engineering AG	477	May 14, 2014	12
Software	DASY52 52.8.7	Schmid & Partner Engineering AG	---	N/A	--
SAM Twin Phantom V5.0	QD 000 P40 C	Schmid & Partner Engineering AG	1813	N/A	--
Universal Radio Communication Tester	CMU 200	Rohde & Schwarz	106826	January 27, 2014	24
Network Analyser 300 kHz to 6 GHz	8753ES	Hewlett Packard)*	US39174436	January 28, 2014	24
Dielectric Probe Kit	85070C	Hewlett Packard	US99360146	N/A	12
Signal Generator	8671B	Hewlett Packard	2823A00656	January 22, 2014	24
Amplifier	25S1G4 (25 Watt)	Amplifier Reasearch	20452	N/A	--
Power Meter	NRP	Rohde & Schwarz	101367	January 21, 2014	24
Power Meter Sensor	NRP Z22	Rohde & Schwarz	100227	January 21, 2014	12
Power Meter Sensor	NRP Z22	Rohde & Schwarz	100234	January 21, 2014	12
Directional Coupler	778D	Hewlett Packard	19171	January 21, 2014	12

)\* : Network analyzer probe calibration against air, distilled water and a shorting block performed before measuring liquid parameters.

## 9 Observations

No observations exceeding those reported with the single test cases have been made.

**Annex A: System performance check**

Date/Time: 01.12.2014 16:54:25

**SystemPerformanceCheck-D2450 body 2014-12-01****DUT: Dipole 2450 MHz; Type: D2450V2; Serial: 710**

Communication System: UID 0, CW (0); Communication System Band: D2450 (2450.0 MHz); Frequency: 2450 MHz; Communication System PAR: 0 dB; PMF: 1

Medium parameters used:  $f = 2450$  MHz;  $\sigma = 2.017$  S/m;  $\epsilon_r = 50.413$ ;  $\rho = 1000$  kg/m<sup>3</sup>

Phantom section: Flat Section

Measurement Standard: DASY5

DASY5 Configuration:

- Probe: EX3DV4 - SN3944; ConvF(7.43, 7.43, 7.43); Calibrated: 19.08.2014;
- Sensor-Surface: 4mm (Mechanical Surface Detection),  $z = 1.0, 31.0$
- Electronics: DAE3 Sn477; Calibrated: 14.05.2014
- Phantom: SAM front; Type: QD000P40CC; Serial: TP-1042
- DASY52 52.8.7(1137); SEMCAD X 14.6.10(7164)

**MSL2450/d=10mm, Pin=1000 mW, dist=4.0mm/Area Scan (81x81x1):**Interpolated grid:  $dx=1.000$  mm,  $dy=1.000$  mm

Maximum value of SAR (interpolated) = 55.4 W/kg

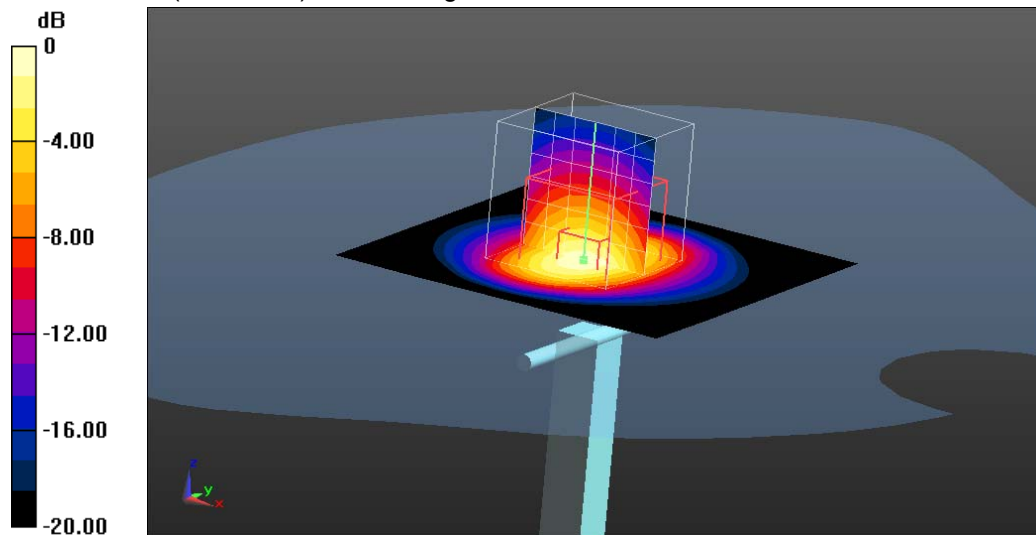
**MSL2450/d=10mm, Pin=1000 mW, dist=4.0mm/Zoom Scan (7x7x7)/Cube 0:**Measurement grid:  $dx=5$ mm,  $dy=5$ mm,  $dz=5$ mm

Reference Value = 163.1 V/m; Power Drift = 0.12 dB

Peak SAR (extrapolated) = 109 W/kg

**SAR(1 g) = 53.3 W/kg; SAR(10 g) = 24.6 W/kg**

Maximum value of SAR (measured) = 61.0 W/kg



0 dB = 61.0 W/kg = 17.85 dBW/kg

**Additional information:**

ambient temperature: 23.6°C; liquid temperature: 22.2°C

Date/Time: 02.12.2014 13:57:04

**SystemPerformanceCheck-D2450 body 2014-12-02****DUT: Dipole 2450 MHz; Type: D2450V2; Serial: 710**

Communication System: UID 0, CW (0); Communication System Band: D2450 (2450.0 MHz); Frequency: 2450 MHz; Communication System PAR: 0 dB; PMF: 1

Medium parameters used:  $f = 2450$  MHz;  $\sigma = 2.017$  S/m;  $\epsilon_r = 50.413$ ;  $\rho = 1000$  kg/m<sup>3</sup>

Phantom section: Flat Section

Measurement Standard: DASY5

DASY5 Configuration:

- Probe: EX3DV4 - SN3944; ConvF(7.43, 7.43, 7.43); Calibrated: 19.08.2014;
- Sensor-Surface: 4mm (Mechanical Surface Detection),  $z = 1.0, 31.0$
- Electronics: DAE3 Sn477; Calibrated: 14.05.2014
- Phantom: SAM front; Type: QD000P40CC; Serial: TP-1042
- DASY52 52.8.7(1137); SEMCAD X 14.6.10(7164)

**MSL2450/d=10mm, Pin=1000 mW, dist=4.0mm/Area Scan (81x81x1):**Interpolated grid:  $dx=1.000$  mm,  $dy=1.000$  mm

Maximum value of SAR (interpolated) = 60.3 W/kg

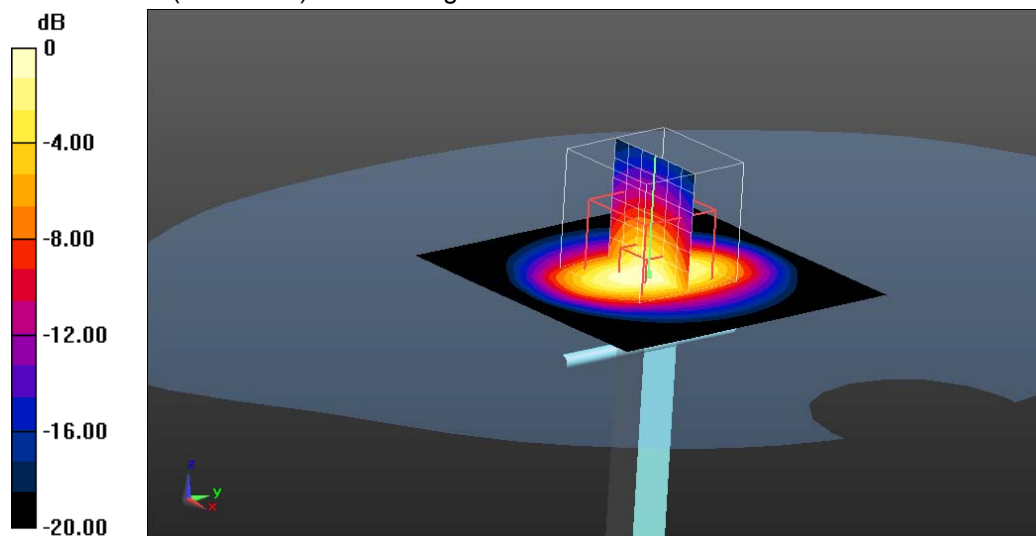
**MSL2450/d=10mm, Pin=1000 mW, dist=4.0mm/Zoom Scan (7x7x7)/Cube 0:**Measurement grid:  $dx=5$ mm,  $dy=5$ mm,  $dz=5$ mm

Reference Value = 172.3 V/m; Power Drift = 0.00 dB

Peak SAR (extrapolated) = 107 W/kg

**SAR(1 g) = 52.4 W/kg; SAR(10 g) = 24.1 W/kg**

Maximum value of SAR (measured) = 60.2 W/kg



0 dB = 60.2 W/kg = 17.80 dBW/kg

**Additional information:**

ambient temperature: 23.7°C; liquid temperature: 22.3°C

**Annex B: DASY5 measurement results****Annex B.1: Bluetooth**

Date/Time: 01.12.2014 10:29:39

**FCC\_EN62209-2 Bluetooth 2450 body worn****DUT: Phonak; Type: Roger EasyPen; Serial: small fractus FCa 12.9.14**

Communication System: UID 0, BT 45% (0); Communication System Band: BT; Frequency: 2402 MHz;

Communication System PAR: 3.44 dB;

Medium parameters used:  $f = 2402$  MHz;  $\sigma = 1.956$  S/m;  $\epsilon_r = 50.634$ ;  $\rho = 1000$  kg/m<sup>3</sup>

Phantom section: Flat Section

Measurement Standard: DASY5

DASY5 Configuration:

- Probe: EX3DV4 - SN3944; ConvF(7.43, 7.43, 7.43); Calibrated: 19.08.2014;

- Sensor-Surface: 4mm (Mechanical Surface Detection),  $z = 1.0, 31.0$ 

- Electronics: DAE3 Sn477; Calibrated: 14.05.2014

- Phantom: SAM front; Type: QD000P40CC; Serial: TP-1042

- DASY52 52.8.7(1137); SEMCAD X 14.6.10(7164)

**MSL2450/Front Low 0mm/Area Scan (71x221x1):** Interpolated grid:  $dx=1.000$  mm,  $dy=1.000$  mm

Maximum value of SAR (interpolated) = 1.05 W/kg

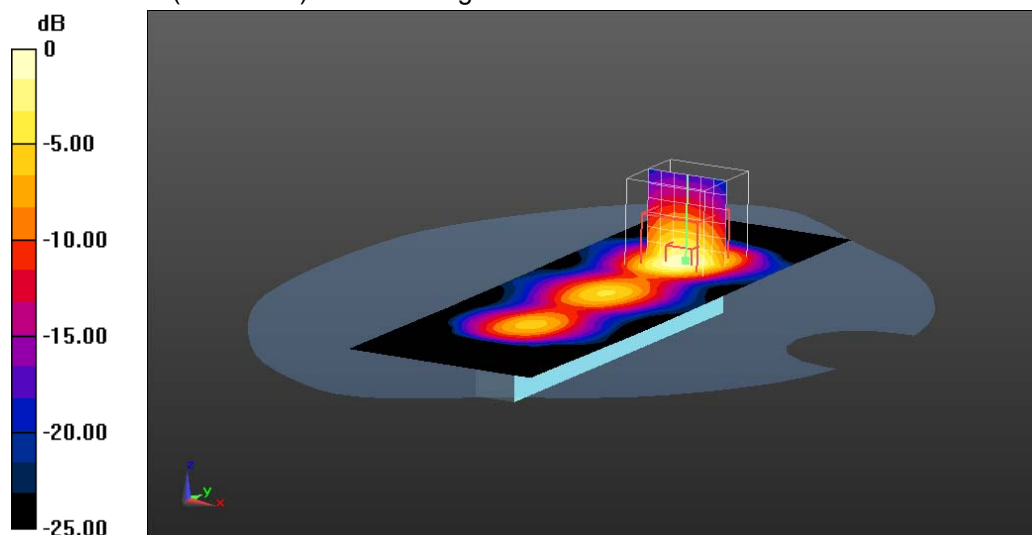
**MSL2450/Front Low 0mm/Zoom Scan (7x7x7)/Cube 0:** Measurement grid:  $dx=5$ mm,  $dy=5$ mm,  $dz=5$ mm

Reference Value = 20.253 V/m; Power Drift = 0.07 dB

Peak SAR (extrapolated) = 1.80 W/kg

**SAR(1 g) = 0.845 W/kg; SAR(10 g) = 0.360 W/kg**

Maximum value of SAR (measured) = 0.993 W/kg



0 dB = 0.993 W/kg = -0.03 dBW/kg

**Additional information:**

position or distance of DUT to SAM: 0mm

ambient temperature: 23.6°C; liquid temperature: 22.2°C

Date/Time: 01.12.2014 15:13:00

**FCC\_EN62209-2 Bluetooth 2450 body worn****DUT: Phonak; Type: Roger EasyPen; Serial: small fractus FCa 12.9.14**Communication System: UID 0, BT 45% (0); Communication System Band: BT; Frequency: 2440 MHz;  
Communication System PAR: 3.44 dB;Medium parameters used:  $f = 2440$  MHz;  $\sigma = 2.006$  S/m;  $\epsilon_r = 50.375$ ;  $\rho = 1000$  kg/m<sup>3</sup>

Phantom section: Flat Section

Measurement Standard: DASY5

DASY5 Configuration:

- Probe: EX3DV4 - SN3944; ConvF(7.43, 7.43, 7.43); Calibrated: 19.08.2014;
- Sensor-Surface: 4mm (Mechanical Surface Detection (Locations From Previous Scan Used)), Sensor-Surface: 4mm (Mechanical Surface Detection),  $z = 1.0, 31.0$
- Electronics: DAE3 Sn477; Calibrated: 14.05.2014
- Phantom: SAM front; Type: QD000P40CC; Serial: TP-1042
- DASY52 52.8.7(1137); SEMCAD X 14.6.10(7164)

**MSL2450/Front Middle 0mm/Area Scan (71x221x1):** Interpolated grid:  $dx=1.000$  mm,  $dy=1.000$  mm

Maximum value of SAR (interpolated) = 1.36 W/kg

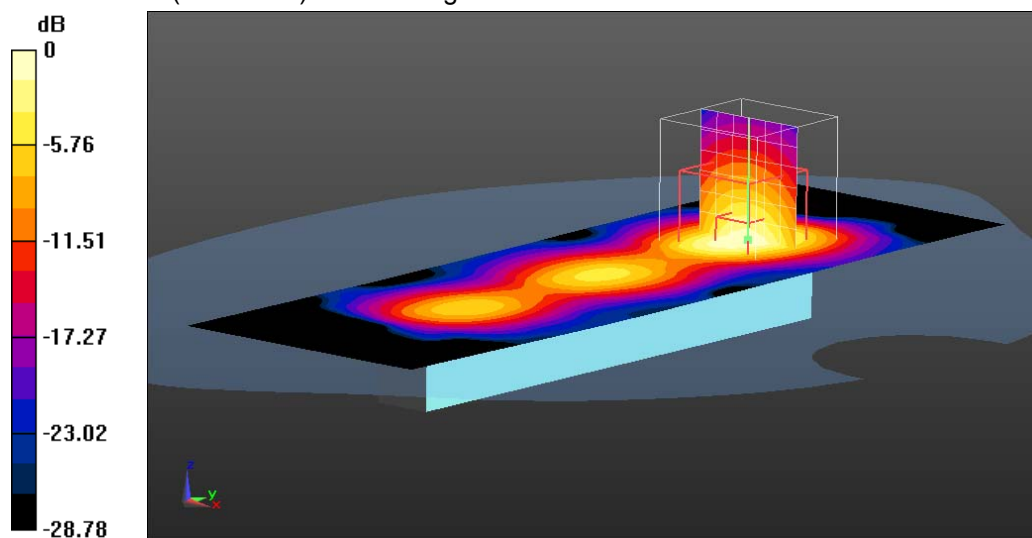
**MSL2450/Front Middle 0mm/Zoom Scan (7x7x7)/Cube 0:** Measurement grid: $dx=5$ mm,  $dy=5$ mm,  $dz=5$ mm

Reference Value = 22.545 V/m; Power Drift = 0.08 dB

Peak SAR (extrapolated) = 2.36 W/kg

**SAR(1 g) = 1.1 W/kg; SAR(10 g) = 0.470 W/kg**

Maximum value of SAR (measured) = 1.30 W/kg



0 dB = 1.30 W/kg = 1.14 dBW/kg

**Additional information:**

position or distance of DUT to SAM: 0mm

ambient temperature: 23.6°C; liquid temperature: 22.2°C

Date/Time: 02.12.2014 10:39:26

**FCC\_EN62209-2 Bluetooth 2450 body worn****DUT: Phonak; Type: Roger EasyPen; Serial: small fractus FCa 12.9.14**Communication System: UID 0, BT 45% (0); Communication System Band: BT; Frequency: 2480 MHz;  
Communication System PAR: 3.44 dB;Medium parameters used:  $f = 2480$  MHz;  $\sigma = 2.064$  S/m;  $\epsilon_r = 50.438$ ;  $\rho = 1000$  kg/m<sup>3</sup>

Phantom section: Flat Section

Measurement Standard: DASY5

DASY5 Configuration:

- Probe: EX3DV4 - SN3944; ConvF(7.43, 7.43, 7.43); Calibrated: 19.08.2014;
- Sensor-Surface: 4mm (Mechanical Surface Detection (Locations From Previous Scan Used)), Sensor-Surface: 4mm (Mechanical Surface Detection),  $z = 1.0, 31.0$
- Electronics: DAE3 Sn477; Calibrated: 14.05.2014
- Phantom: SAM front; Type: QD000P40CC; Serial: TP-1042
- DASY52 52.8.7(1137); SEMCAD X 14.6.10(7164)

**MSL2450/Front High 0mm/Area Scan (71x221x1):** Interpolated grid:  $dx=1.000$  mm,  $dy=1.000$  mm

Maximum value of SAR (interpolated) = 1.51 W/kg

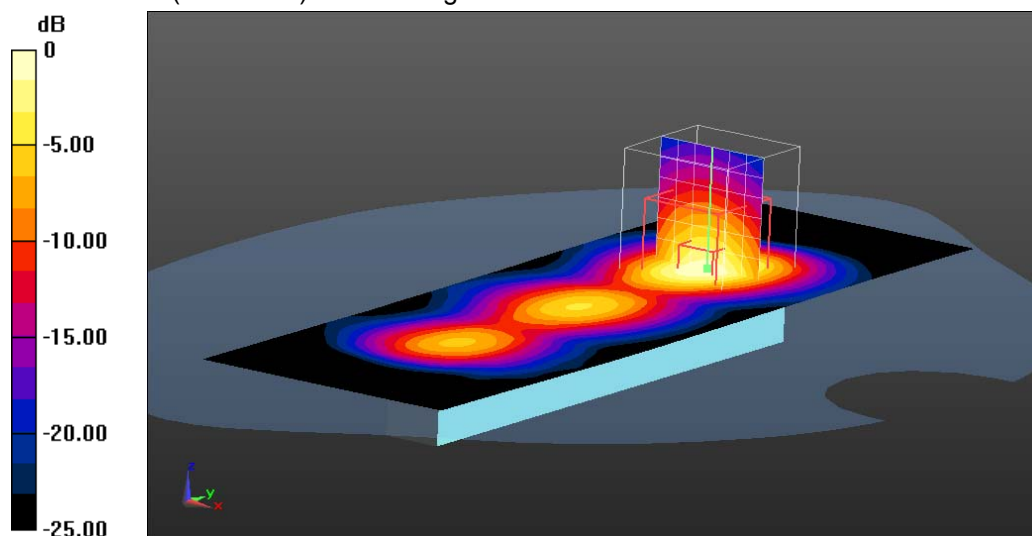
**MSL2450/Front High 0mm/Zoom Scan (7x7x7)/Cube 0:** Measurement grid:  $dx=5$ mm,  $dy=5$ mm,  $dz=5$ mm

Reference Value = 23.989 V/m; Power Drift = 0.10 dB

Peak SAR (extrapolated) = 2.70 W/kg

**SAR(1 g) = 1.24 W/kg; SAR(10 g) = 0.526 W/kg**

Maximum value of SAR (measured) = 1.46 W/kg



0 dB = 1.46 W/kg = 1.64 dBW/kg

**Additional information:**

position or distance of DUT to SAM: 0mm

ambient temperature: 23.7°C; liquid temperature: 22.3°C



Date/Time: 01.12.2014 11:17:47

**FCC\_EN62209-2 Bluetooth 2450 body worn****DUT: Phonak; Type: Roger EasyPen; Serial: small fractus FCa 12.9.14**

Communication System: UID 0, BT 45% (0); Communication System Band: BT; Frequency: 2402 MHz;

Communication System PAR: 3.44 dB;

Medium parameters used:  $f = 2402$  MHz;  $\sigma = 1.956$  S/m;  $\epsilon_r = 50.634$ ;  $\rho = 1000$  kg/m<sup>3</sup>

Phantom section: Flat Section

Measurement Standard: DASY5

DASY5 Configuration:

- Probe: EX3DV4 - SN3944; ConvF(7.43, 7.43, 7.43); Calibrated: 19.08.2014;
- Sensor-Surface: 4mm (Mechanical Surface Detection (Locations From Previous Scan Used)), Sensor-Surface: 4mm (Mechanical Surface Detection),  $z = 1.0, 31.0$
- Electronics: DAE3 Sn477; Calibrated: 14.05.2014
- Phantom: SAM front; Type: QD000P40CC; Serial: TP-1042
- DASY52 52.8.7(1137); SEMCAD X 14.6.10(7164)

**MSL2450/Rear Low 0mm/Area Scan (71x221x1):** Interpolated grid:  $dx=1.000$  mm,  $dy=1.000$  mm

Maximum value of SAR (interpolated) = 1.04 W/kg

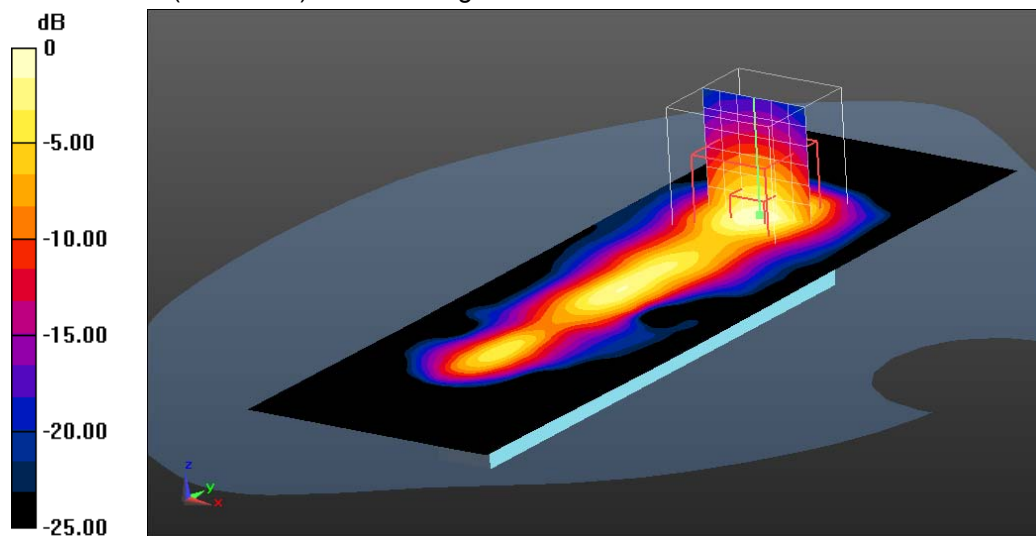
**MSL2450/Rear Low 0mm/Zoom Scan (7x7x7)/Cube 0:** Measurement grid:  $dx=5$ mm,  $dy=5$ mm,  $dz=5$ mm

Reference Value = 21.551 V/m; Power Drift = -0.02 dB

Peak SAR (extrapolated) = 1.91 W/kg

**SAR(1 g) = 0.828 W/kg; SAR(10 g) = 0.326 W/kg**

Maximum value of SAR (measured) = 0.997 W/kg



0 dB = 0.997 W/kg = -0.01 dBW/kg

**Additional information:**

position or distance of DUT to SAM: 0mm

ambient temperature: 23.6°C; liquid temperature: 22.2°C



Date/Time: 02.12.2014 09:56:48

**FCC\_EN62209-2 Bluetooth 2450 body worn****DUT: Phonak; Type: Roger EasyPen; Serial: small fractus FCa 12.9.14**

Communication System: UID 0, BT 45% (0); Communication System Band: BT; Frequency: 2440 MHz;

Communication System PAR: 3.44 dB;

Medium parameters used:  $f = 2440$  MHz;  $\sigma = 2.006$  S/m;  $\epsilon_r = 50.375$ ;  $\rho = 1000$  kg/m<sup>3</sup>

Phantom section: Flat Section

Measurement Standard: DASY5

DASY5 Configuration:

- Probe: EX3DV4 - SN3944; ConvF(7.43, 7.43, 7.43); Calibrated: 19.08.2014;
- Sensor-Surface: 4mm (Mechanical Surface Detection (Locations From Previous Scan Used)), Sensor-Surface: 4mm (Mechanical Surface Detection),  $z = 1.0, 31.0$
- Electronics: DAE3 Sn477; Calibrated: 14.05.2014
- Phantom: SAM front; Type: QD000P40CC; Serial: TP-1042
- DASY52 52.8.7(1137); SEMCAD X 14.6.10(7164)

**MSL2450/Rear Middle 0mm/Area Scan (71x221x1):** Interpolated grid:  $dx=1.000$  mm,  $dy=1.000$  mm

Maximum value of SAR (interpolated) = 1.40 W/kg

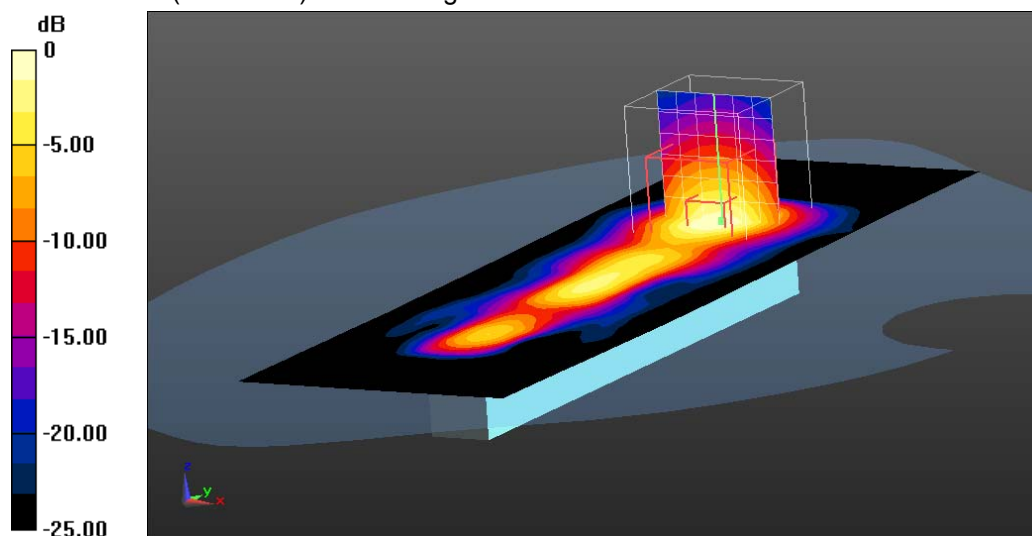
**MSL2450/Rear Middle 0mm/Zoom Scan (7x7x7)/Cube 0:** Measurement grid: $dx=5$ mm,  $dy=5$ mm,  $dz=5$ mm

Reference Value = 23.273 V/m; Power Drift = -0.09 dB

Peak SAR (extrapolated) = 2.53 W/kg

**SAR(1 g) = 1.09 W/kg; SAR(10 g) = 0.425 W/kg**

Maximum value of SAR (measured) = 1.30 W/kg



0 dB = 1.30 W/kg = 1.14 dBW/kg

**Additional information:**

position or distance of DUT to SAM: 0mm

ambient temperature: 23.7°C; liquid temperature: 22.3°C

Date/Time: 02.12.2014 11:27:58

**FCC\_EN62209-2 Bluetooth 2450 body worn****DUT: Phonak; Type: Roger EasyPen; Serial: small fractus FCa 12.9.14**

Communication System: UID 0, BT 45% (0); Communication System Band: BT; Frequency: 2480 MHz;

Communication System PAR: 3.44 dB;

Medium parameters used:  $f = 2480$  MHz;  $\sigma = 2.064$  S/m;  $\epsilon_r = 50.438$ ;  $\rho = 1000$  kg/m<sup>3</sup>

Phantom section: Flat Section

Measurement Standard: DASY5

DASY5 Configuration:

- Probe: EX3DV4 - SN3944; ConvF(7.43, 7.43, 7.43); Calibrated: 19.08.2014;
- Sensor-Surface: 4mm (Mechanical Surface Detection (Locations From Previous Scan Used)), Sensor-Surface: 4mm (Mechanical Surface Detection),  $z = 1.0, 31.0$
- Electronics: DAE3 Sn477; Calibrated: 14.05.2014
- Phantom: SAM front; Type: QD000P40CC; Serial: TP-1042
- DASY52 52.8.7(1137); SEMCAD X 14.6.10(7164)

**MSL2450/Rear High 0mm/Area Scan (71x221x1):** Interpolated grid:  $dx=1.000$  mm,  $dy=1.000$  mm

Maximum value of SAR (interpolated) = 1.69 W/kg

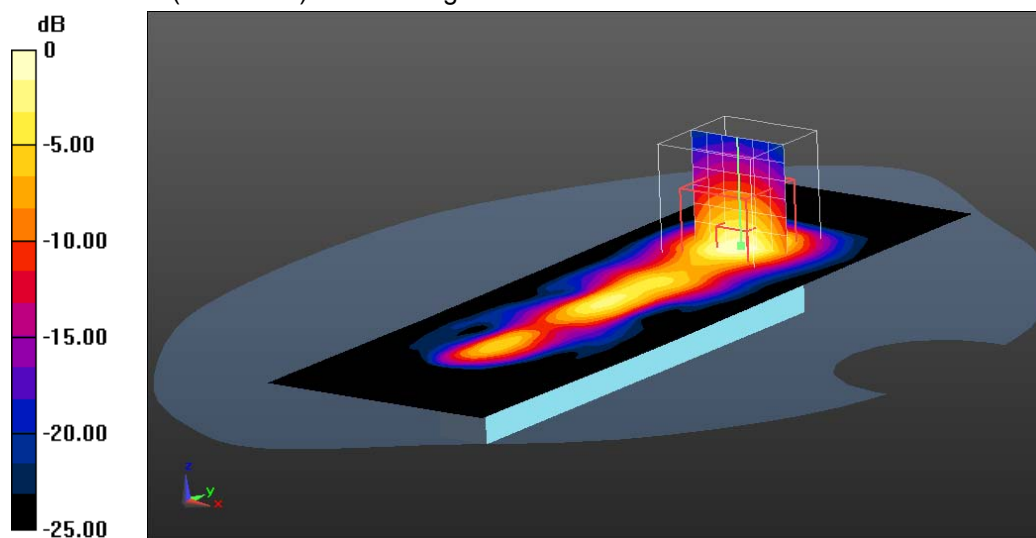
**MSL2450/Rear High 0mm/Zoom Scan (7x7x7)/Cube 0:** Measurement grid:  $dx=5$ mm,  $dy=5$ mm,  $dz=5$ mm

Reference Value = 24.724 V/m; Power Drift = -0.07 dB

Peak SAR (extrapolated) = 3.06 W/kg

**SAR(1 g) = 1.31 W/kg; SAR(10 g) = 0.510 W/kg**

Maximum value of SAR (measured) = 1.57 W/kg



0 dB = 1.57 W/kg = 1.96 dBW/kg

**Additional information:**

position or distance of DUT to SAM: 0mm

ambient temperature: 23.7°C; liquid temperature: 22.3°C

Date/Time: 01.12.2014 10:56:56

**FCC\_EN62209-2 Bluetooth 2450 body worn****DUT: Phonak; Type: Roger EasyPen; Serial: small fractus FCa 12.9.14**Communication System: UID 0, BT 45% (0); Communication System Band: BT; Frequency: 2402 MHz;  
Communication System PAR: 3.44 dB;Medium parameters used:  $f = 2402$  MHz;  $\sigma = 1.956$  S/m;  $\epsilon_r = 50.634$ ;  $\rho = 1000$  kg/m<sup>3</sup>

Phantom section: Flat Section

Measurement Standard: DASY5

DASY5 Configuration:

- Probe: EX3DV4 - SN3944; ConvF(7.43, 7.43, 7.43); Calibrated: 19.08.2014;
- Sensor-Surface: 4mm (Mechanical Surface Detection (Locations From Previous Scan Used)), Sensor-Surface: 4mm (Mechanical Surface Detection),  $z = 1.0, 31.0$
- Electronics: DAE3 Sn477; Calibrated: 14.05.2014
- Phantom: SAM front; Type: QD000P40CC; Serial: TP-1042
- DASY52 52.8.7(1137); SEMCAD X 14.6.10(7164)

**MSL2450/Left Low 0mm/Area Scan (71x221x1):** Interpolated grid:  $dx=1.000$  mm,  $dy=1.000$  mm

Maximum value of SAR (interpolated) = 1.09 W/kg

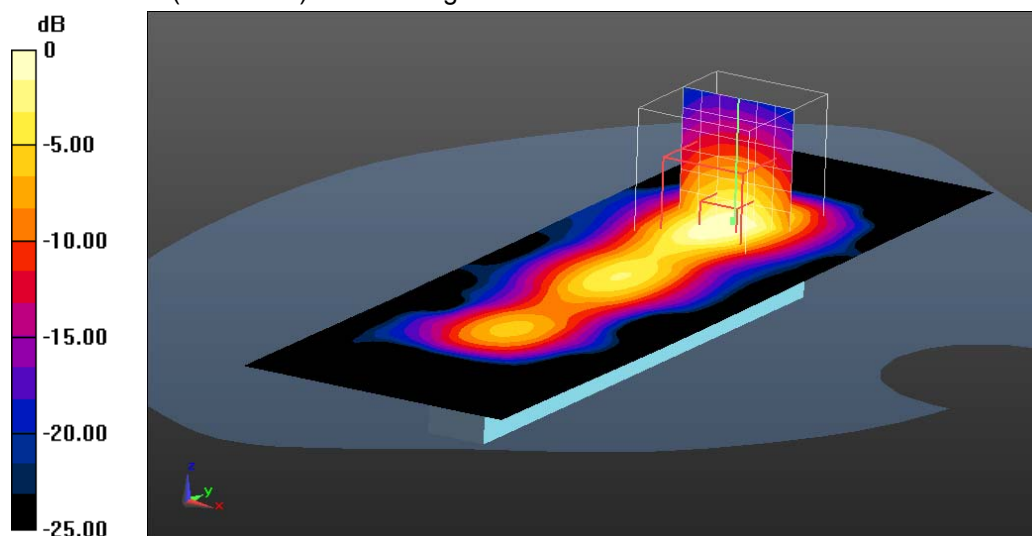
**MSL2450/Left Low 0mm/Zoom Scan (7x8x7)/Cube 0:** Measurement grid:  $dx=5$ mm,  $dy=5$ mm,  $dz=5$ mm

Reference Value = 21.943 V/m; Power Drift = -0.06 dB

Peak SAR (extrapolated) = 1.88 W/kg

**SAR(1 g) = 0.889 W/kg; SAR(10 g) = 0.395 W/kg**

Maximum value of SAR (measured) = 1.02 W/kg



0 dB = 1.02 W/kg = 0.09 dBW/kg

**Additional information:**

position or distance of DUT to SAM: 0mm

ambient temperature: 23.6°C; liquid temperature: 22.2°C

Date/Time: 01.12.2014 15:53:32

**FCC\_EN62209-2 Bluetooth 2450 body worn****DUT: Phonak; Type: Roger EasyPen; Serial: small fractus FCa 12.9.14**

Communication System: UID 0, BT 45% (0); Communication System Band: BT; Frequency: 2440 MHz;

Communication System PAR: 3.44 dB;

Medium parameters used:  $f = 2440$  MHz;  $\sigma = 2.006$  S/m;  $\epsilon_r = 50.375$ ;  $\rho = 1000$  kg/m<sup>3</sup>

Phantom section: Flat Section

Measurement Standard: DASY5

DASY5 Configuration:

- Probe: EX3DV4 - SN3944; ConvF(7.43, 7.43, 7.43); Calibrated: 19.08.2014;
- Sensor-Surface: 4mm (Mechanical Surface Detection (Locations From Previous Scan Used)), Sensor-Surface: 4mm (Mechanical Surface Detection),  $z = 1.0, 31.0$
- Electronics: DAE3 Sn477; Calibrated: 14.05.2014
- Phantom: SAM front; Type: QD000P40CC; Serial: TP-1042
- DASY52 52.8.7(1137); SEMCAD X 14.6.10(7164)

**MSL2450/Left Middle 0mm/Area Scan (71x221x1):** Interpolated grid:  $dx=1.000$  mm,  $dy=1.000$  mm

Maximum value of SAR (interpolated) = 1.36 W/kg

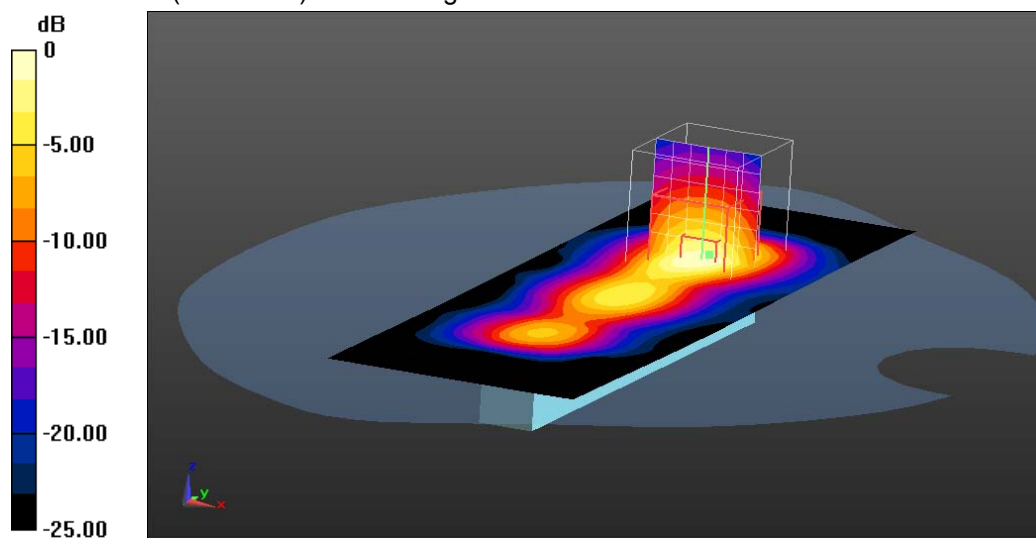
**MSL2450/Left Middle 0mm/Zoom Scan (7x8x7)/Cube 0:** Measurement grid:  $dx=5$ mm,  $dy=5$ mm,  $dz=5$ mm

Reference Value = 23.703 V/m; Power Drift = 0.07 dB

Peak SAR (extrapolated) = 2.42 W/kg

**SAR(1 g) = 1.13 W/kg; SAR(10 g) = 0.502 W/kg**

Maximum value of SAR (measured) = 1.31 W/kg



0 dB = 1.31 W/kg = 1.17 dBW/kg

**Additional information:**

position or distance of DUT to SAM: 0mm

ambient temperature: 23.6°C; liquid temperature: 22.2°C

Date/Time: 02.12.2014 11:05:32

**FCC\_EN62209-2 Bluetooth 2450 body worn****DUT: Phonak; Type: Roger EasyPen; Serial: small fractus FCa 12.9.14**Communication System: UID 0, BT 45% (0); Communication System Band: BT; Frequency: 2480 MHz;  
Communication System PAR: 3.44 dB;Medium parameters used:  $f = 2480$  MHz;  $\sigma = 2.064$  S/m;  $\epsilon_r = 50.438$ ;  $\rho = 1000$  kg/m<sup>3</sup>

Phantom section: Flat Section

Measurement Standard: DASY5

DASY5 Configuration:

- Probe: EX3DV4 - SN3944; ConvF(7.43, 7.43, 7.43); Calibrated: 19.08.2014;
- Sensor-Surface: 4mm (Mechanical Surface Detection (Locations From Previous Scan Used)), Sensor-Surface: 4mm (Mechanical Surface Detection),  $z = 1.0, 31.0$
- Electronics: DAE3 Sn477; Calibrated: 14.05.2014
- Phantom: SAM front; Type: QD000P40CC; Serial: TP-1042
- DASY52 52.8.7(1137); SEMCAD X 14.6.10(7164)

**MSL2450/Left High 0mm/Area Scan (71x221x1):** Interpolated grid:  $dx=1.000$  mm,  
 $dy=1.000$  mm

Maximum value of SAR (interpolated) = 1.45 W/kg

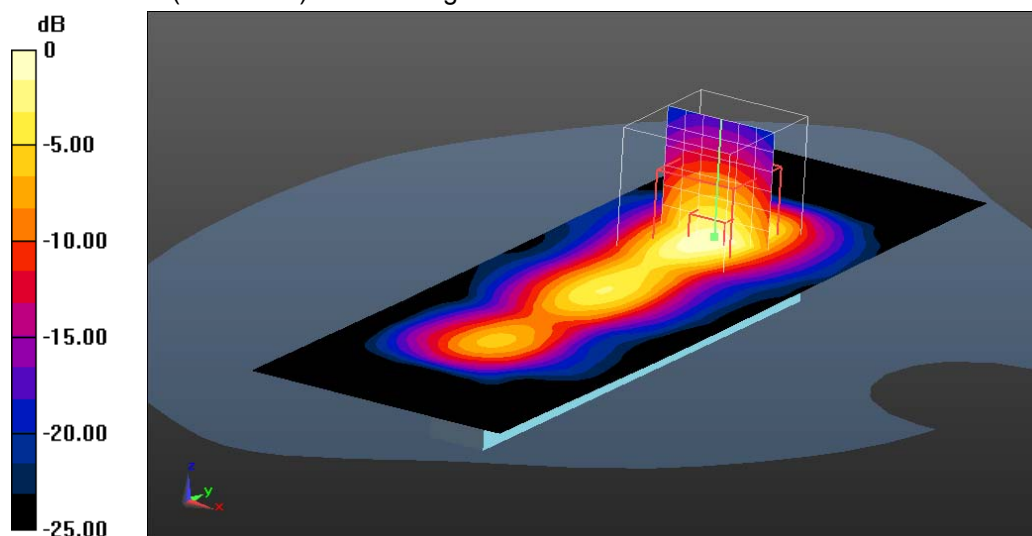
**MSL2450/Left High 0mm/Zoom Scan (7x8x7)/Cube 0:** Measurement grid:  $dx=5$ mm,  
 $dy=5$ mm,  $dz=5$ mm

Reference Value = 24.175 V/m; Power Drift = -0.05 dB

Peak SAR (extrapolated) = 2.54 W/kg

**SAR(1 g) = 1.18 W/kg; SAR(10 g) = 0.522 W/kg**

Maximum value of SAR (measured) = 1.37 W/kg



0 dB = 1.37 W/kg = 1.37 dBW/kg

**Additional information:**

position or distance of DUT to SAM: 0mm

ambient temperature: 23.7°C; liquid temperature: 22.3°C

Date/Time: 01.12.2014 12:01:06

**FCC\_EN62209-2 Bluetooth 2450 body worn****DUT: Phonak; Type: Roger EasyPen; Serial: small fractus FCa 12.9.14**Communication System: UID 0, BT 45% (0); Communication System Band: BT; Frequency: 2402 MHz;  
Communication System PAR: 3.44 dB;Medium parameters used:  $f = 2402$  MHz;  $\sigma = 1.956$  S/m;  $\epsilon_r = 50.634$ ;  $\rho = 1000$  kg/m<sup>3</sup>

Phantom section: Flat Section

Measurement Standard: DASY5

DASY5 Configuration:

- Probe: EX3DV4 - SN3944; ConvF(7.43, 7.43, 7.43); Calibrated: 19.08.2014;
- Sensor-Surface: 4mm (Mechanical Surface Detection (Locations From Previous Scan Used)), Sensor-Surface: 4mm (Mechanical Surface Detection),  $z = 1.0, 31.0$
- Electronics: DAE3 Sn477; Calibrated: 14.05.2014
- Phantom: SAM front; Type: QD000P40CC; Serial: TP-1042
- DASY52 52.8.7(1137); SEMCAD X 14.6.10(7164)

**MSL2450/Right Low 0mm/Area Scan (71x221x1):** Interpolated grid:  $dx=1.000$  mm,  
 $dy=1.000$  mm

Maximum value of SAR (interpolated) = 1.19 W/kg

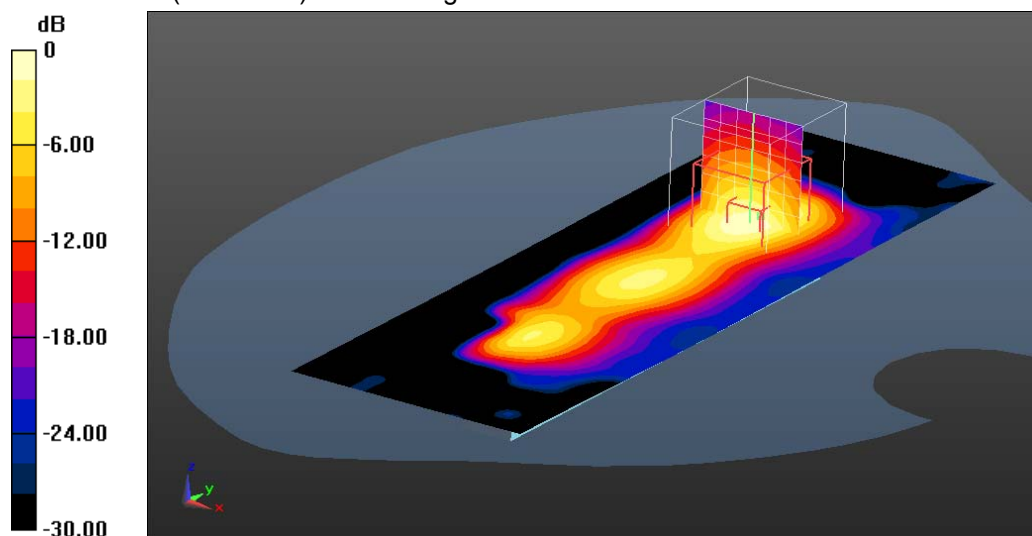
**MSL2450/Right Low 0mm/Zoom Scan (7x8x7)/Cube 0:** Measurement grid:  $dx=5$ mm,  
 $dy=5$ mm,  $dz=5$ mm

Reference Value = 21.337 V/m; Power Drift = 0.01 dB

Peak SAR (extrapolated) = 2.11 W/kg

**SAR(1 g) = 0.930 W/kg; SAR(10 g) = 0.398 W/kg**

Maximum value of SAR (measured) = 1.09 W/kg



0 dB = 1.09 W/kg = 0.37 dBW/kg

**Additional information:**

position or distance of DUT to SAM: 0mm

ambient temperature: 23.6°C; liquid temperature: 22.2°C

Date/Time: 02.12.2014 10:16:43

**FCC\_EN62209-2 Bluetooth 2450 body worn****DUT: Phonak; Type: Roger EasyPen; Serial: small fractus FCa 12.9.14**

Communication System: UID 0, BT 45% (0); Communication System Band: BT; Frequency: 2440 MHz;

Communication System PAR: 3.44 dB;

Medium parameters used:  $f = 2440$  MHz;  $\sigma = 2.006$  S/m;  $\epsilon_r = 50.375$ ;  $\rho = 1000$  kg/m<sup>3</sup>

Phantom section: Flat Section

Measurement Standard: DASY5

DASY5 Configuration:

- Probe: EX3DV4 - SN3944; ConvF(7.43, 7.43, 7.43); Calibrated: 19.08.2014;
- Sensor-Surface: 4mm (Mechanical Surface Detection (Locations From Previous Scan Used)), Sensor-Surface: 4mm (Mechanical Surface Detection),  $z = 1.0, 31.0$
- Electronics: DAE3 Sn477; Calibrated: 14.05.2014
- Phantom: SAM front; Type: QD000P40CC; Serial: TP-1042
- DASY52 52.8.7(1137); SEMCAD X 14.6.10(7164)

**MSL2450/Right Middle 0mm/Area Scan (71x221x1):** Interpolated grid:  $dx=1.000$  mm,  $dy=1.000$  mm

Maximum value of SAR (interpolated) = 1.43 W/kg

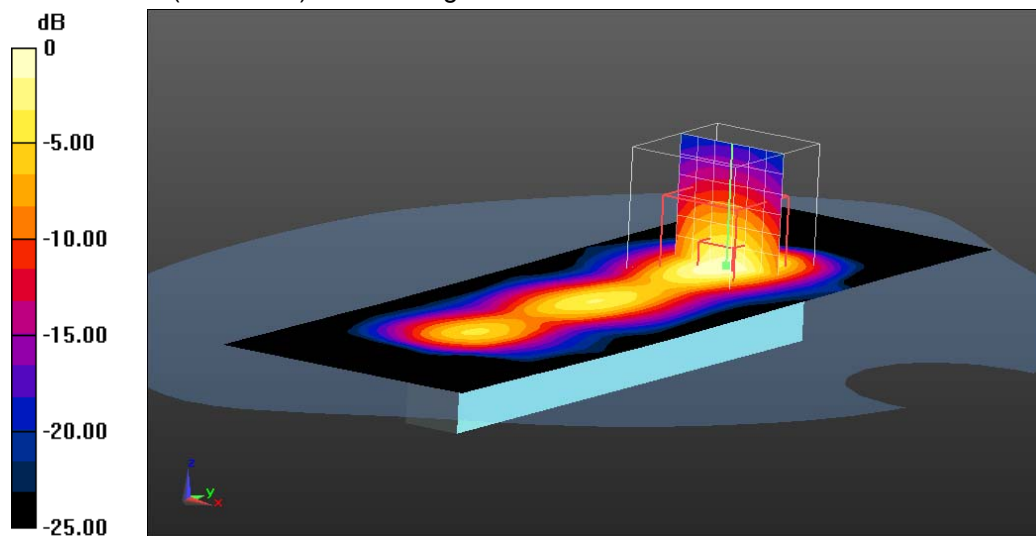
**MSL2450/Right Middle 0mm/Zoom Scan (7x8x7)/Cube 0:** Measurement grid: $dx=5$ mm,  $dy=5$ mm,  $dz=5$ mm

Reference Value = 23.084 V/m; Power Drift = 0.12 dB

Peak SAR (extrapolated) = 2.70 W/kg

**SAR(1 g) = 1.17 W/kg; SAR(10 g) = 0.497 W/kg**

Maximum value of SAR (measured) = 1.38 W/kg



0 dB = 1.38 W/kg = 1.40 dBW/kg

**Additional information:**

position or distance of DUT to SAM: 0mm

ambient temperature: 23.7°C; liquid temperature: 22.3°C



Date/Time: 02.12.2014 11:48:25

**FCC\_EN62209-2 Bluetooth 2450 body worn****DUT: Phonak; Type: Roger EasyPen; Serial: small fractus FCa 12.9.14**

Communication System: UID 0, BT 45% (0); Communication System Band: BT; Frequency: 2480 MHz;

Communication System PAR: 3.44 dB;

Medium parameters used:  $f = 2480$  MHz;  $\sigma = 2.064$  S/m;  $\epsilon_r = 50.438$ ;  $\rho = 1000$  kg/m<sup>3</sup>

Phantom section: Flat Section

Measurement Standard: DASY5

DASY5 Configuration:

- Probe: EX3DV4 - SN3944; ConvF(7.43, 7.43, 7.43); Calibrated: 19.08.2014;
- Sensor-Surface: 4mm (Mechanical Surface Detection (Locations From Previous Scan Used)), Sensor-Surface: 4mm (Mechanical Surface Detection),  $z = 1.0, 31.0$
- Electronics: DAE3 Sn477; Calibrated: 14.05.2014
- Phantom: SAM front; Type: QD000P40CC; Serial: TP-1042
- DASY52 52.8.7(1137); SEMCAD X 14.6.10(7164)

**MSL2450/Right High 0mm/Area Scan (71x221x1):** Interpolated grid:  $dx=1.000$  mm,  $dy=1.000$  mm

Maximum value of SAR (interpolated) = 1.57 W/kg

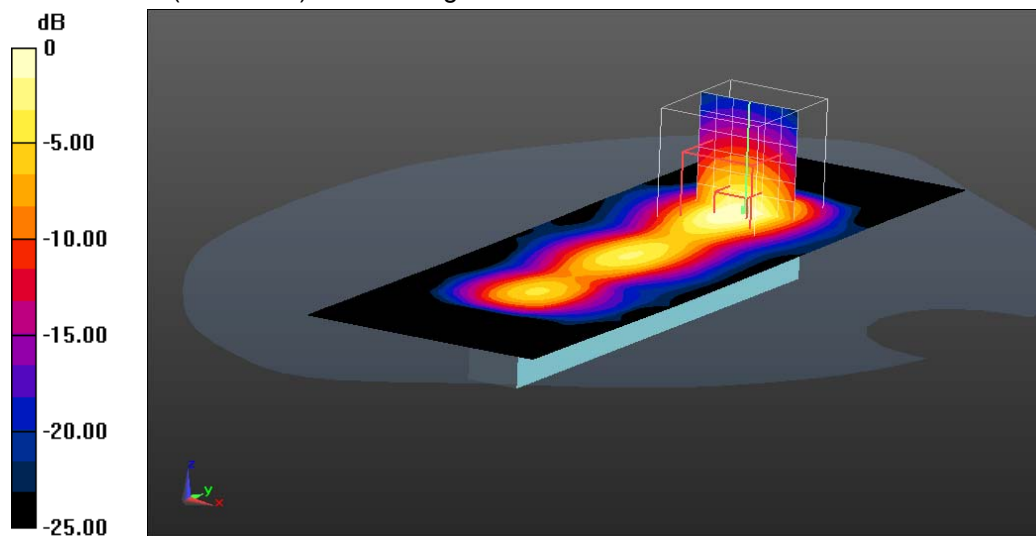
**MSL2450/Right High 0mm/Zoom Scan (7x8x7)/Cube 0:** Measurement grid:  $dx=5$ mm,  $dy=5$ mm,  $dz=5$ mm

Reference Value = 23.756 V/m; Power Drift = -0.10 dB

Peak SAR (extrapolated) = 2.92 W/kg

**SAR(1 g) = 1.25 W/kg; SAR(10 g) = 0.531 W/kg**

Maximum value of SAR (measured) = 1.44 W/kg



0 dB = 1.44 W/kg = 1.58 dBW/kg

**Additional information:**

position or distance of DUT to SAM: 0mm

ambient temperature: 23.7°C; liquid temperature: 22.3°C



Date/Time: 01.12.2014 14:28:45

**FCC\_EN62209-2 Bluetooth 2450 body worn****DUT: Phonak; Type: Roger EasyPen; Serial: small fractus FCa 12.9.14**

Communication System: UID 0, BT 45% (0); Communication System Band: BT; Frequency: 2440 MHz;

Communication System PAR: 3.44 dB;

Medium parameters used:  $f = 2440$  MHz;  $\sigma = 2.006$  S/m;  $\epsilon_r = 50.375$ ;  $\rho = 1000$  kg/m<sup>3</sup>

Phantom section: Flat Section

Measurement Standard: DASY5

DASY5 Configuration:

- Probe: EX3DV4 - SN3944; ConvF(7.43, 7.43, 7.43); Calibrated: 19.08.2014;

- Sensor-Surface: 4mm (Mechanical Surface Detection),  $z = 1.0, 31.0$ 

- Electronics: DAE3 Sn477; Calibrated: 14.05.2014

- Phantom: SAM front; Type: QD000P40CC; Serial: TP-1042

- DASY52 52.8.7(1137); SEMCAD X 14.6.10(7164)

**MSL2450/Top Middle 0mm/Area Scan (51x51x1):** Interpolated grid:  $dx=1.000$  mm, $dy=1.000$  mm

Maximum value of SAR (interpolated) = 0.223 W/kg

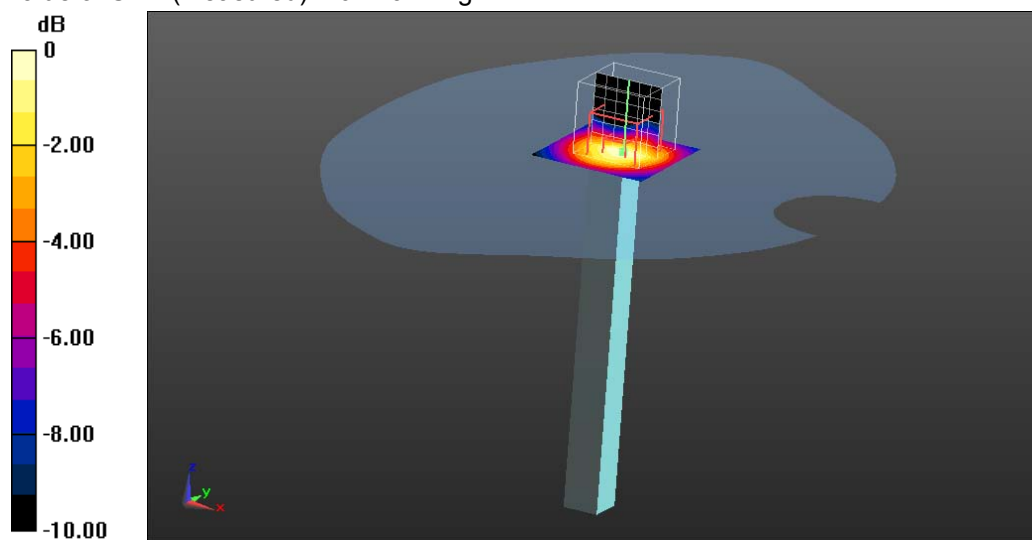
**MSL2450/Top Middle 0mm/Zoom Scan (7x7x7)/Cube 0:** Measurement grid:  $dx=5$ mm, $dy=5$ mm,  $dz=5$ mm

Reference Value = 10.262 V/m; Power Drift = 0.05 dB

Peak SAR (extrapolated) = 0.580 W/kg

**SAR(1 g) = 0.207 W/kg; SAR(10 g) = 0.099 W/kg**

Maximum value of SAR (measured) = 0.229 W/kg



0 dB = 0.229 W/kg = -6.40 dBW/kg

**Additional information:**

position or distance of DUT to SAM: 0mm

ambient temperature: 23.6°C; liquid temperature: 22.2°C

Date/Time: 01.12.2014 14:43:25

**FCC\_EN62209-2 Bluetooth 2450 body worn****DUT: Phonak; Type: Roger EasyPen; Serial: small fractus FCa 12.9.14**

Communication System: UID 0, BT 45% (0); Communication System Band: BT; Frequency: 2440 MHz;

Communication System PAR: 3.44 dB;

Medium parameters used:  $f = 2440$  MHz;  $\sigma = 2.006$  S/m;  $\epsilon_r = 50.375$ ;  $\rho = 1000$  kg/m<sup>3</sup>

Phantom section: Flat Section

Measurement Standard: DASY5

DASY5 Configuration:

- Probe: EX3DV4 - SN3944; ConvF(7.43, 7.43, 7.43); Calibrated: 19.08.2014;
- Sensor-Surface: 4mm (Mechanical Surface Detection (Locations From Previous Scan Used)), Sensor-Surface: 4mm (Mechanical Surface Detection),  $z = 1.0, 31.0$
- Electronics: DAE3 Sn477; Calibrated: 14.05.2014
- Phantom: SAM front; Type: QD000P40CC; Serial: TP-1042
- DASY52 52.8.7(1137); SEMCAD X 14.6.10(7164)

**MSL2450/Bottom Middle 0mm/Area Scan (51x51x1):** Interpolated grid:  $dx=1.000$  mm,  $dy=1.000$  mm

Maximum value of SAR (interpolated) = 0.122 W/kg

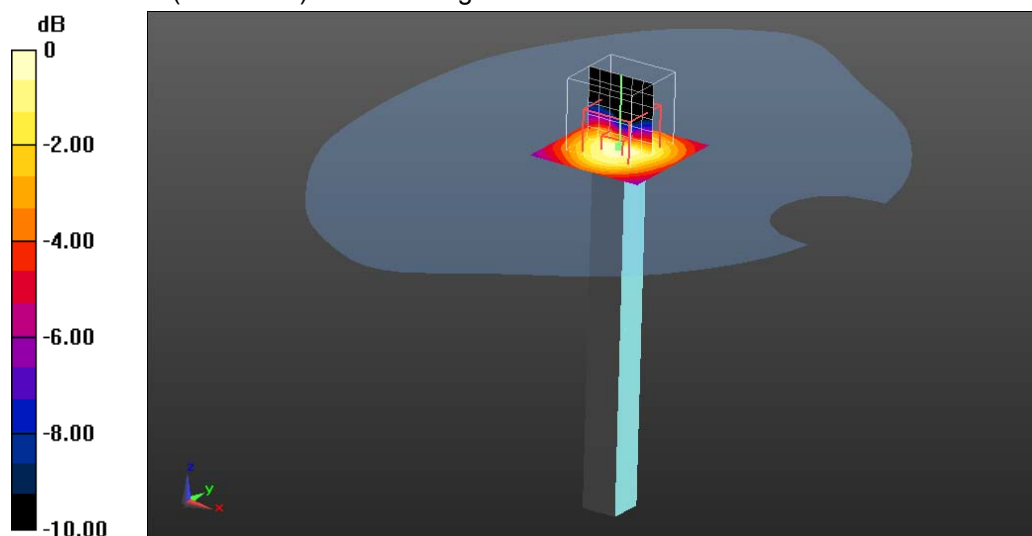
**MSL2450/Bottom Middle 0mm/Zoom Scan (7x7x7)/Cube 0:** Measurement grid: $dx=5$ mm,  $dy=5$ mm,  $dz=5$ mm

Reference Value = 7.188 V/m; Power Drift = 0.03 dB

Peak SAR (extrapolated) = 0.278 W/kg

**SAR(1 g) = 0.110 W/kg; SAR(10 g) = 0.056 W/kg**

Maximum value of SAR (measured) = 0.122 W/kg



0 dB = 0.122 W/kg = -9.14 dBW/kg

**Additional information:**

position or distance of DUT to SAM: 0mm

ambient temperature: 23.6°C; liquid temperature: 22.2°C

Date/Time: 02.12.2014 12:10:11

**FCC\_EN62209-2 Bluetooth 2450 body worn****DUT: Phonak; Type: Roger EasyPen; Serial: small fractus FCa 12.9.14**

Communication System: UID 0, BT 45% (0); Communication System Band: BT; Frequency: 2480 MHz;

Communication System PAR: 3.44 dB;

Medium parameters used:  $f = 2480$  MHz;  $\sigma = 2.064$  S/m;  $\epsilon_r = 50.438$ ;  $\rho = 1000$  kg/m<sup>3</sup>

Phantom section: Flat Section

Measurement Standard: DASY5

DASY5 Configuration:

- Probe: EX3DV4 - SN3944; ConvF(7.43, 7.43, 7.43); Calibrated: 19.08.2014;
- Sensor-Surface: 4mm (Mechanical Surface Detection (Locations From Previous Scan Used)), Sensor-Surface: 4mm (Mechanical Surface Detection),  $z = 1.0, 31.0$
- Electronics: DAE3 Sn477; Calibrated: 14.05.2014
- Phantom: SAM front; Type: QD000P40CC; Serial: TP-1042
- DASY52 52.8.7(1137); SEMCAD X 14.6.10(7164)

**MSL2450/Rear High 0mm WC/Area Scan (71x221x1):** Interpolated grid:  $dx=1.000$  mm,  $dy=1.000$  mm

Maximum value of SAR (interpolated) = 1.81 W/kg

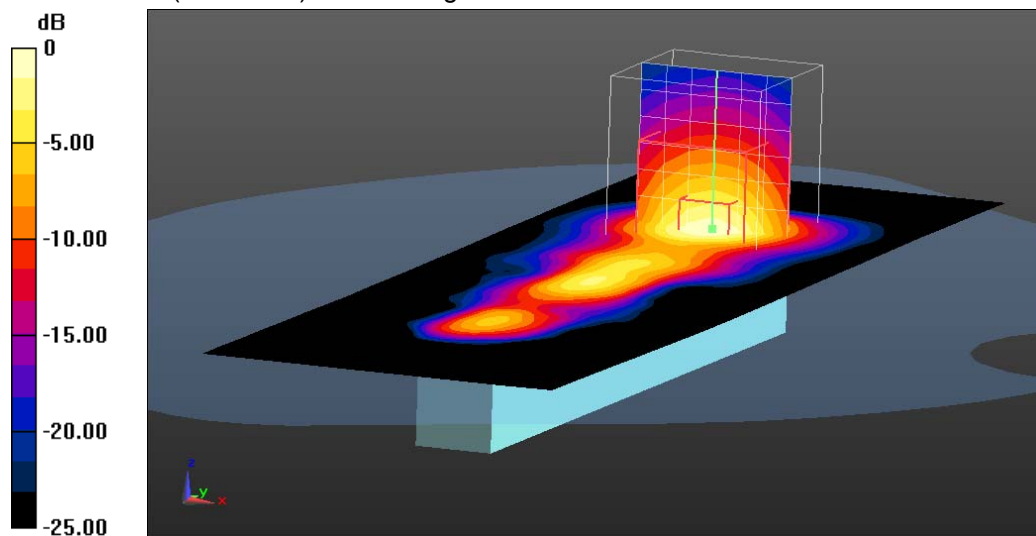
**MSL2450/Rear High 0mm WC/Zoom Scan (7x7x7)/Cube 0:** Measurement grid: $dx=5$ mm,  $dy=5$ mm,  $dz=5$ mm

Reference Value = 27.027 V/m; Power Drift = -0.07 dB

Peak SAR (extrapolated) = 3.35 W/kg

**SAR(1 g) = 1.42 W/kg; SAR(10 g) = 0.545 W/kg**

Maximum value of SAR (measured) = 1.69 W/kg



0 dB = 1.69 W/kg = 2.28 dBW/kg

**Additional information:**

position or distance of DUT to SAM: 0mm

ambient temperature: 23.7°C; liquid temperature: 22.3°C

## Annex B.2: Liquid depth

Photo 1: Liquid depth 2450 MHz body simulating liquid



## Annex C: Photo documentation

Photo 1: Measurement System DASY 5



Photo 2: DUT – front view



Photo 3: DUT – side view



Photo 4: DUT – bottom view



Photo 5: DUT – rear view



Photo 6: DUT – rear view (label)





Photo 7: Test position front body with 0 mm distance



Photo 8: Test position right side body with 0 mm distance





Photo 9: Test position rear body with 0 mm distance



Photo 10: Test position top side body with 0 mm distance



Photo 11: Test position bottom side body with 0 mm distance



#### **Annex D: Calibration parameters**

Calibration parameters are described in the additional document:

**Appendix to test report no. 1-9034/14-01-02  
Calibration data, Phantom certificate  
and detail information of the DASY5 System**

**Annex E: RF Technical Brief Cover Sheet acc. to RSS-102 Annex A**

1. COMPANY NUMBER: **2262A**
2. MODEL NUMBER: **Roger EasyPen**
3. MANUFACTURER: **PHONAK Communications AG**
4. TYPE OF EVALUATION:

SAR Evaluation: **Body-Worn Device**

- Multiple transmitters: Yes ☐ No ☒
- Evaluated against exposure limits: General Public Use ☒ Controlled Use ☐
- Duty cycle used in evaluation: 45 %
- Standard used for evaluation: RSS-102 Issue 4 (2010-03)
- SAR value: **1.593 W/kg.**                      Measured ☒ Computed ☐ Calculated ☐

**Annex E.1: Declaration of RF Exposure Compliance**

ATTESTATION: I attest that the information provided in Annex E: is correct; that a Technical Brief was prepared and the information it contains is correct; that the device evaluation was performed or supervised by me; that applicable measurement methods and evaluation methodologies have been followed and that the device meets the SAR and/or RF exposure limits of RSS-102.

Signature:

NAME : **Oleksandr Hnatovskiy**

TITLE : Dipl.-Ing. (FH)

COMPANY : CETECOM ICT Services GmbH

**Annex F: Document History**

Version	Applied Changes	Date of Release
	Initial Release	2014-12-05

**Annex G: Further Information****Glossary**

BW	-	Bandwidth
DTS	-	Distributed Transmission System
DUT	-	Device under Test
EUT	-	Equipment under Test
FCC	-	Federal Communication Commission
FCC ID	-	Company Identifier at FCC
HW	-	Hardware
IC	-	Industry Canada
Inv. No.	-	Inventory number
LTE	-	Long Term Evolution
N/A	-	not applicable
PCE	-	Personal Consumption Expenditure
OET	-	Office of Engineering and Technology
RB	-	resource block(s)
SAR	-	Specific Absorption Rate
S/N	-	Serial Number
SPLSR <sub>i</sub>	-	SAR-to-(peak-locations spacing) ratio
SW	-	Software
UNII	-	Unlicensed National Information Infrastructure