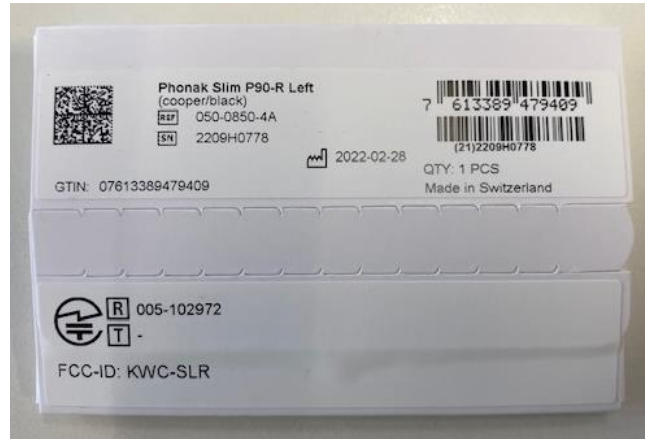


Packaging Information

The SAP label for each hearing aid is placed on the back of the sleeve.

The second label below shows the FCC ID and Giteki ID



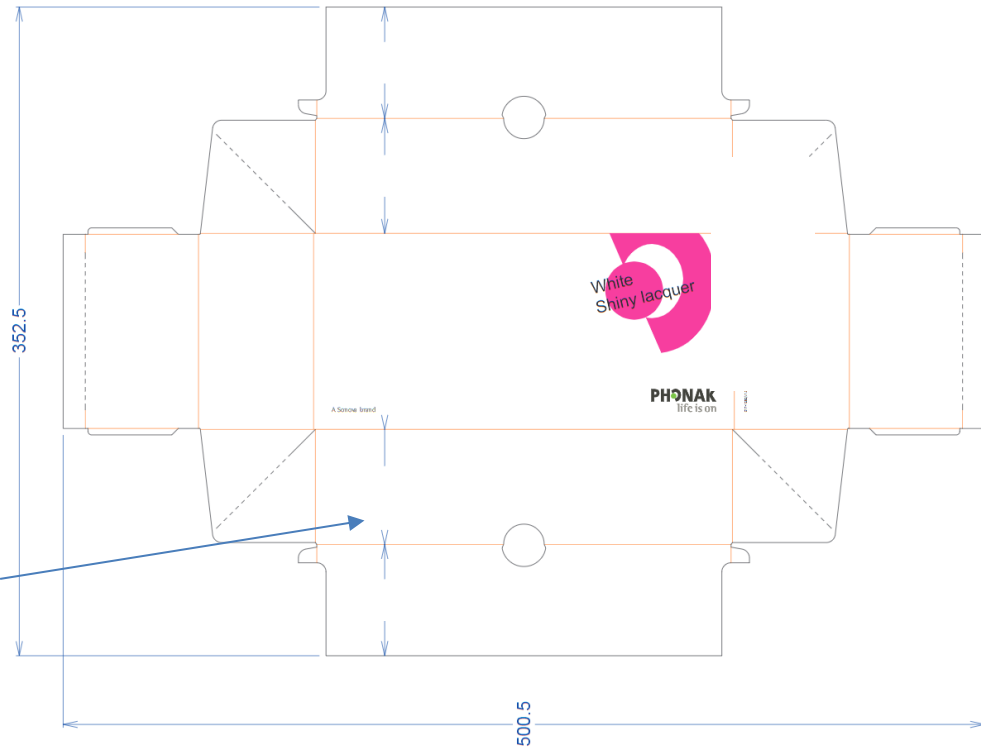
Confidential and proprietary.

This document and its contents are confidential and proprietary to Sonova and shall not be reproduced or otherwise disclosed to anyone other than Sonova employees without written authorization from Sonova.

This printout is an uncontrolled copy. The original is stored in the Document Management System.

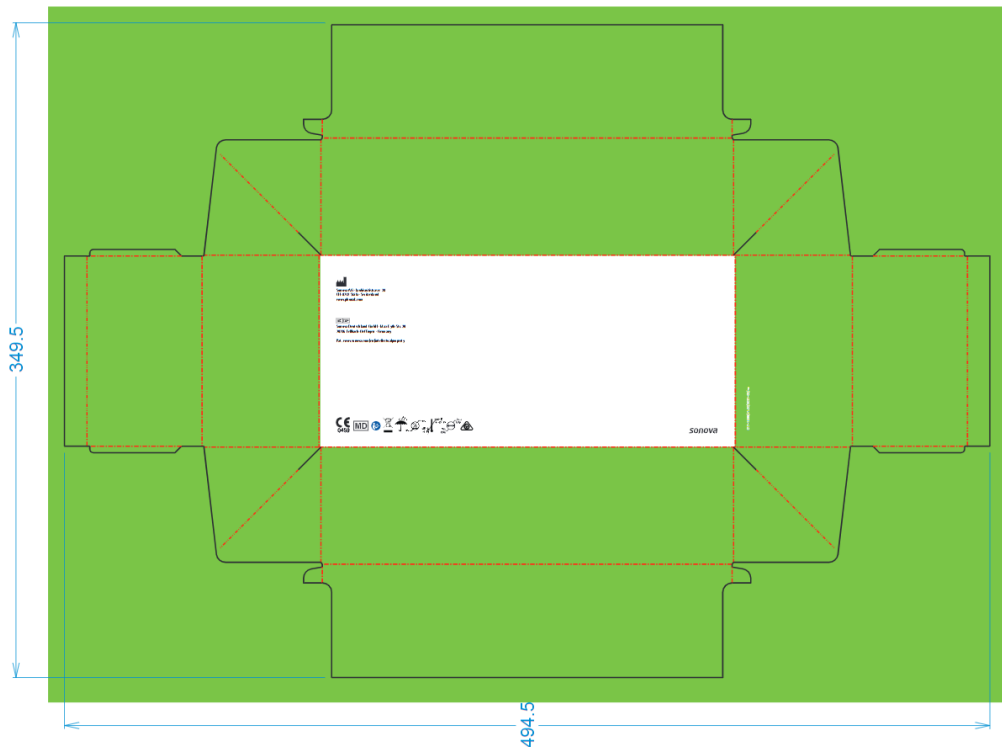
Phonak Kit Slim P-R (90/70/50/30/Trial)

Lid of Kit packaging



SAP label for Slim Kit will be placed here

Bottom



Confidential and proprietary.

This document and its contents are confidential and proprietary to Sonova and shall not be reproduced or otherwise disclosed to anyone other than Sonova employees without written authorization from Sonova.

This printout is an uncontrolled copy. The original is stored in the Document Management System.