

Federal Communication Commission Equipment
Authorization Division,
Application Processing Branch
7435 Oakland Mills Road
Columbia, MD 21048

Date: 10.06.2024

To Whom It May Concern

Ref.: Label Location for FCC ID KWC-IRP

Pursuant to paragraph §2.925 of 47 C.F.R. the FCC ID: KWC-IRP, which is subject of this filing, shall bear a permanently affixed, readily visible label listing the information as specified in §2.926 and §15.19(a) of the 47 C.F.R. Due to the specific use of the hearing instrument (as shown in figure 1) its external surface is in contact with the user's skin behind the ear.

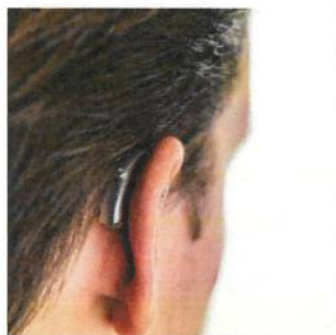


Figure 1: Position of the Hearing Instrument on the User

Therefore, it is not appropriate to permanently affix a label on the outer surface of the device to prevent skin irritations. In this case the size of the FCC ID will be smaller than 2 points, which does not satisfy the requirements for "readily visible" label as defined in §2.925 (d)(2) and §2.925(g).

Due to the small size of the devices and pursuant to paragraph § 15.19(a)(5) of 47 C.F.R., the FCC ID and the statement specified in §15.19(a)(3) are placed in the user manual and affixed on the device packaging as shown below.

Jennifer Penn

Sonova USA Inc.
444 Commerce St. Aurora
60504 Illinois, USA

Sonova AG
Laubisrütistrasse 28
8712 Stäfa
Switzerland

Phone +41 58 928 01 01
Fax +41 58 928 20 11
info@sonova.com
www.sonova.com