

Labelling & Packaging Information Mozart Wireless Charger

Product pictures and Labelling on the product

Labeling STRUCTURE:

Brand labeling “Phonak” on the top (lid) of the product.

Product name printed on label on the bottom of the Charger Case Go

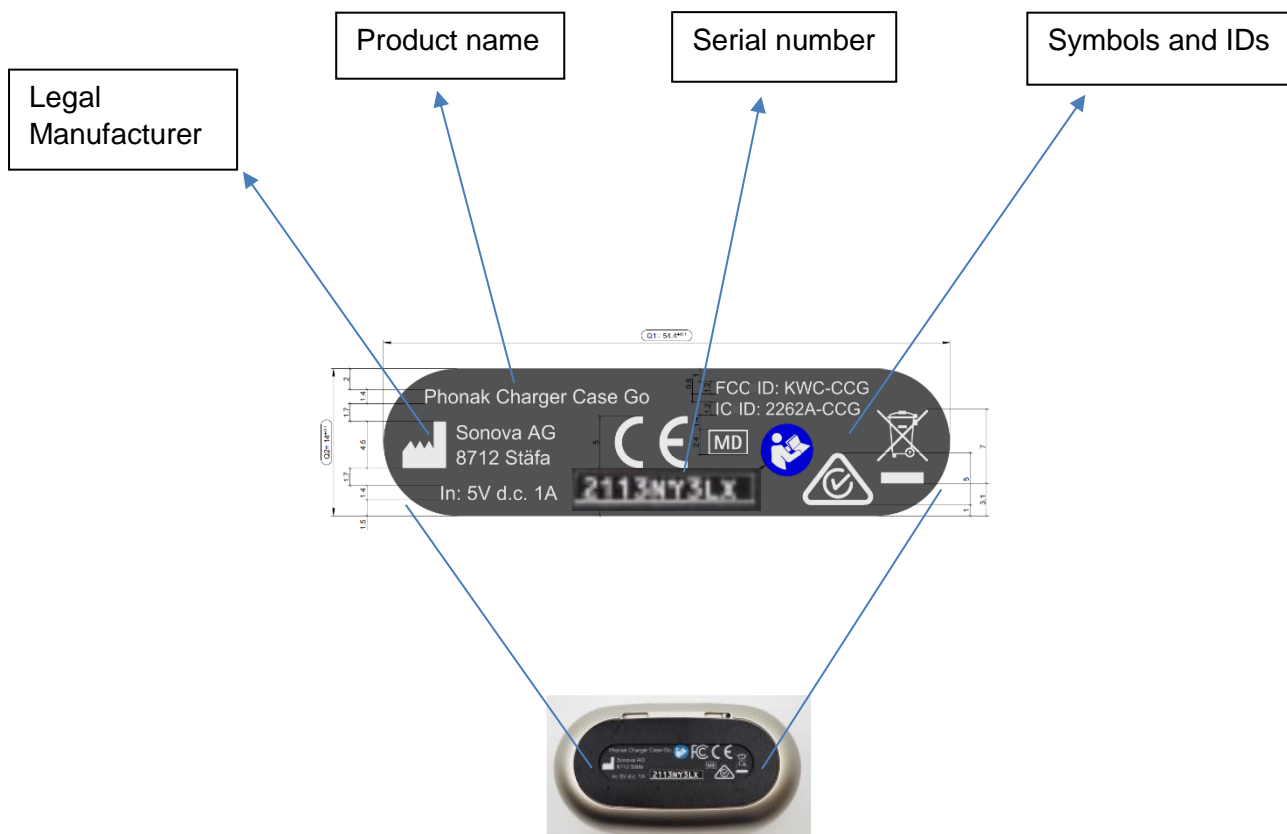
Serial number printed on label on the bottom of the Charger Case Go, e.g. 2113NY3LX

The serial number contains **Manufacturing Date** within the number:



YY = year (Example: 21 for 2021)

WW = number of the current production week (example: 13 for the week 13)



Label placed on the bottom of the Charger Case

Confidential and proprietary.

This document and its contents are confidential and proprietary to Sonova and shall not be reproduced or otherwise disclosed to anyone other than Sonova employees without written authorization from Sonova.

This printout is an uncontrolled copy. The original is stored in the Document Management System.