

**THALES 'TOP FLIGHT' FLANGE MOUNT HIGH POWER AMPLIFIER  
(FMHPA)**

**FCC ID: KV6TFS-HPA82166A  
EXHIBIT 9 - INTERNAL PHOTOS**

Any enquiries concerning this document should be addressed to:

Satcom Product Group Manager  
Thales Avionics Limited  
86 Bushey Road  
London  
SW20 0JW

The copyright of this document is vested in Thales Avionics Limited, and the recipient should use it only for the purpose for which it was issued. The recipient shall not use the document in any manner that is competitive with or detrimental to the commercial interests of Thales Avionics Limited. Nor shall the recipient publish this document or make it available to any third party or in any other way divulge the contents or any technical expertise evident therein without Thales Avionics Limited prior written approval.

© Thales Avionics Limited 2008

Prepared/Approved By

  
 Andrew O'Byrne

Authorised By

  
 Jennifer Livingstone

## ISSUE RECORD

| Issue   | Date     | By             | Comments              |
|---------|----------|----------------|-----------------------|
| Draft A | 18/08/08 | Andrew O'Byrne | 1 <sup>st</sup> Draft |
| Issue 1 | 09/09/08 | Andrew O'Byrne | Thales comments added |
|         |          |                |                       |

## Figure Index for Exhibit 9 – Internal Photos

| Document                    | Figure  |
|-----------------------------|---|
| Exhibit 9 – Internal Photos | Figure 1: FMHPA HPA module bottom, showing HPM modules                                      |
| Exhibit 9 – Internal Photos | Figure 2: Close up of a FMHPA HPM module  |
| Exhibit 9 – Internal Photos | Figure 3: Power Supply (PSM) and Communications (CM) Modules also showing test connector J4 |
| Exhibit 9 – Internal Photos | Figure 4: Side view of PSM and CM showing ARINC connector                                   |
| Exhibit 9 – Internal Photos | Figure 5: Top of the PSM and CM module with test connectors J7 and J9 shown                 |
| Exhibit 9 – Internal Photos | Figure 6: Underside of the PSM and CM module showing access port for connector J4           |

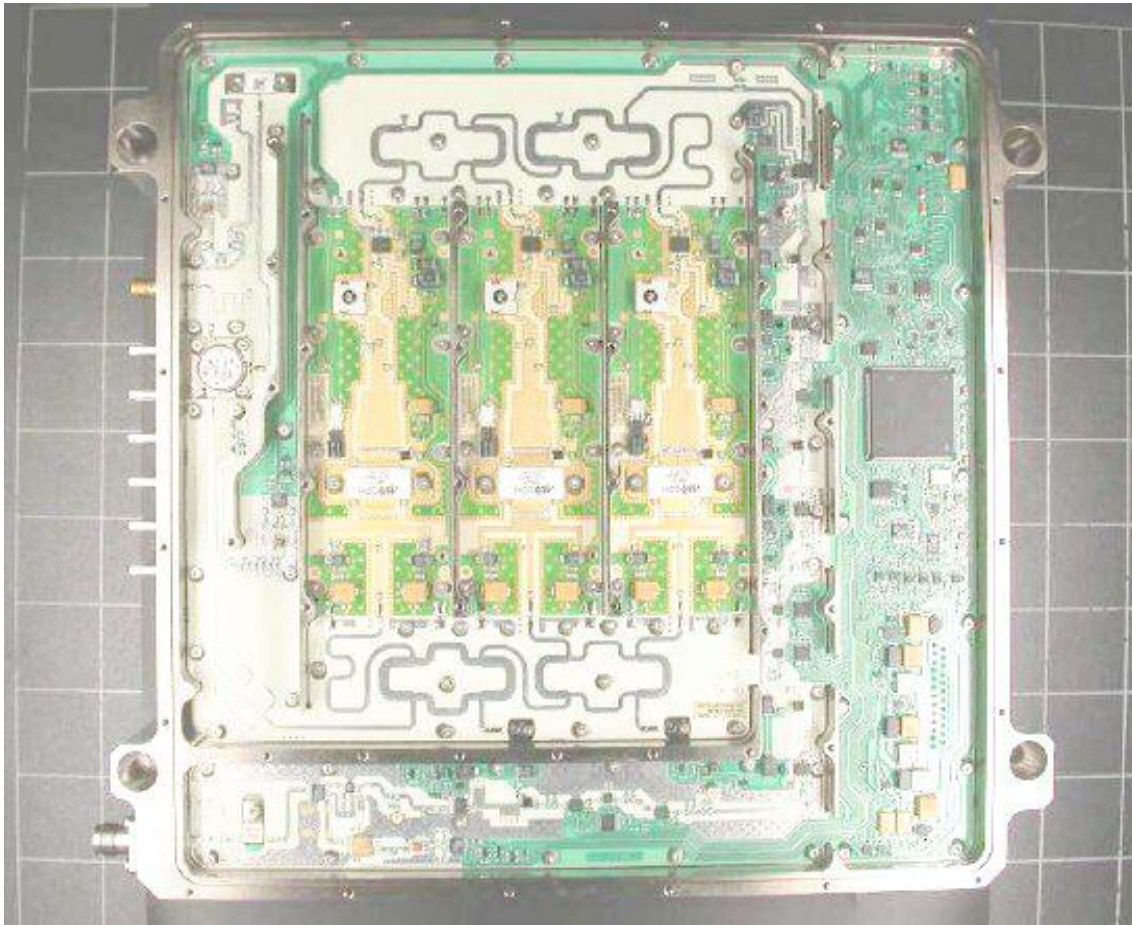


Figure 1: FMHPA HPA module bottom, showing HPM modules

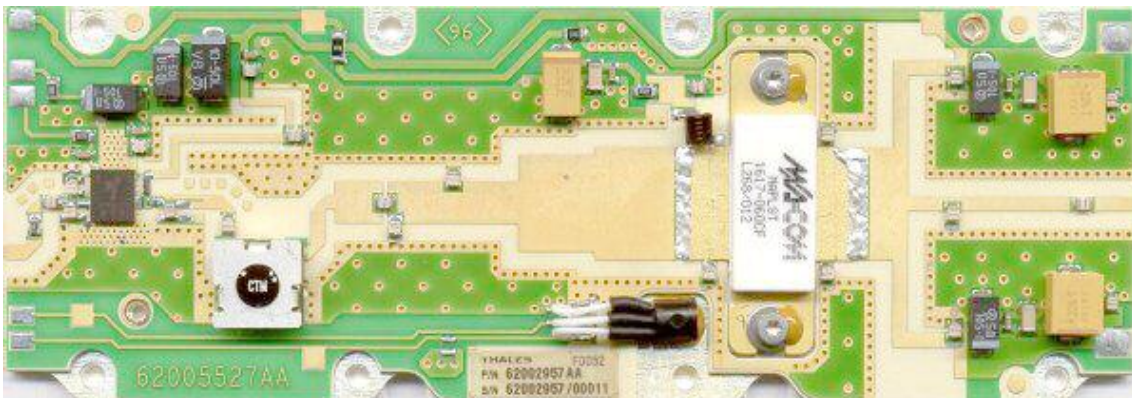


Figure 2: Close up of a FMHPA HPM module



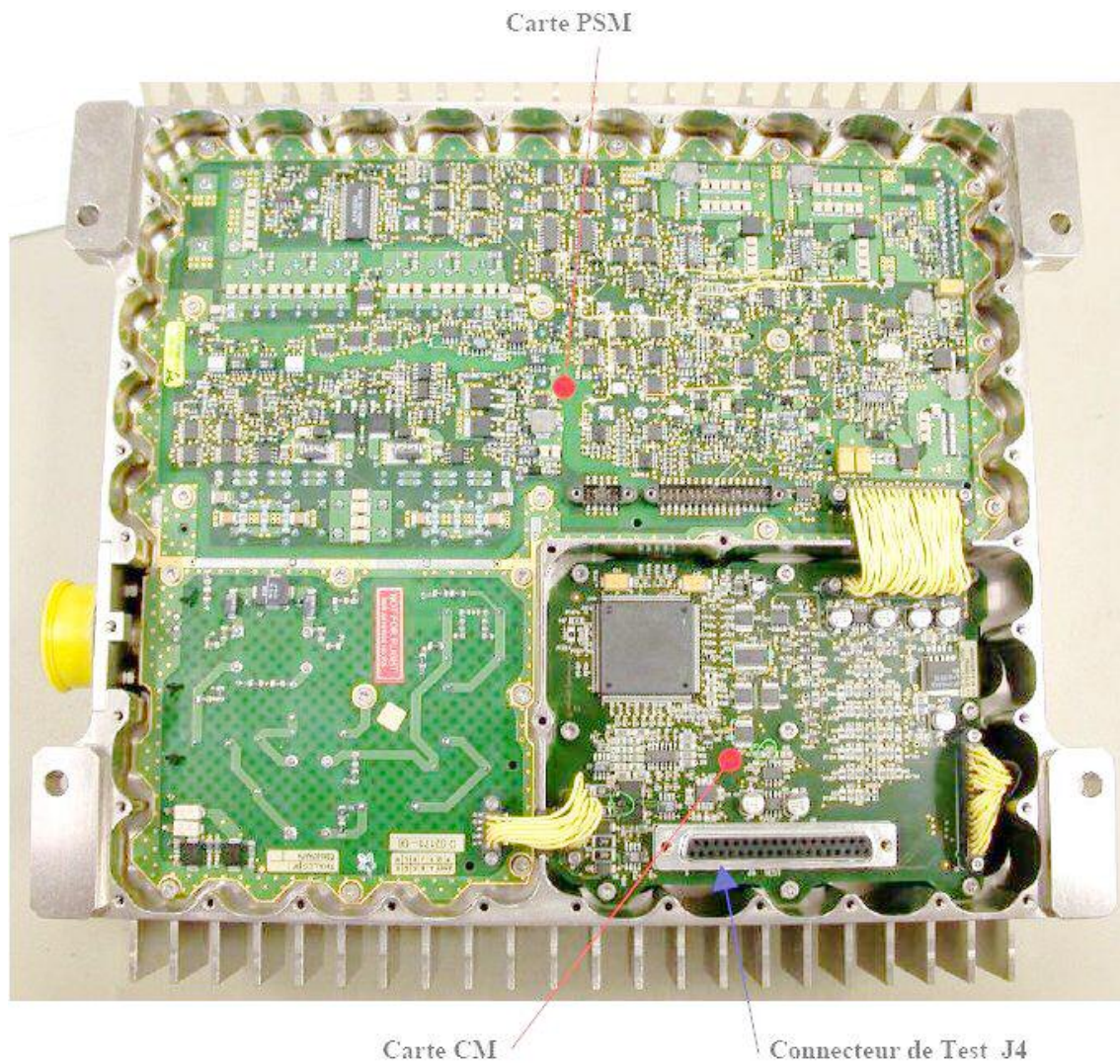


Figure 3: Power Supply (PSM) and Communications (CM) Modules also showing test connector J4

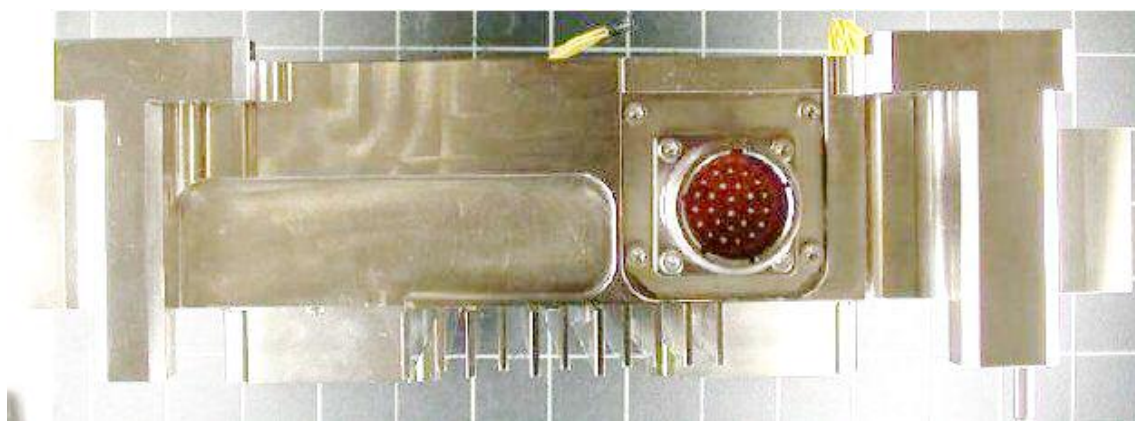


Figure 4: Side view of PSM and CM showing ARINC connector

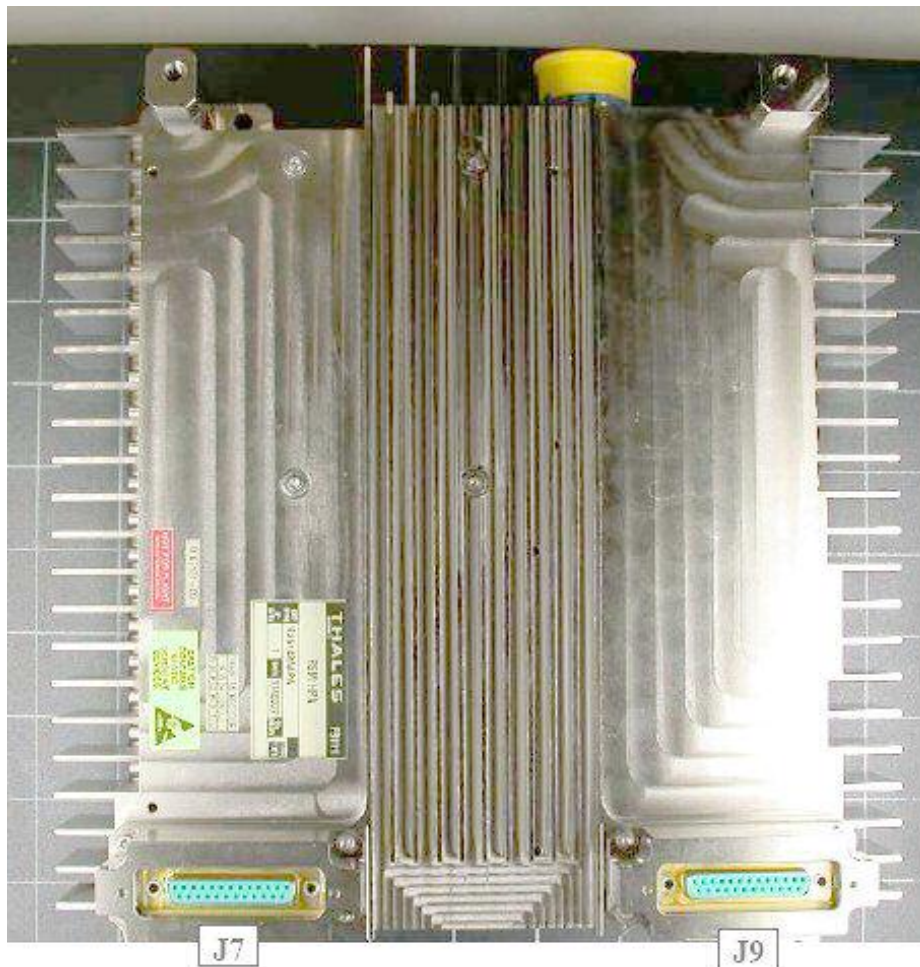


Figure 5: Top of the PSM and CM module with test connectors J7 and J9 shown

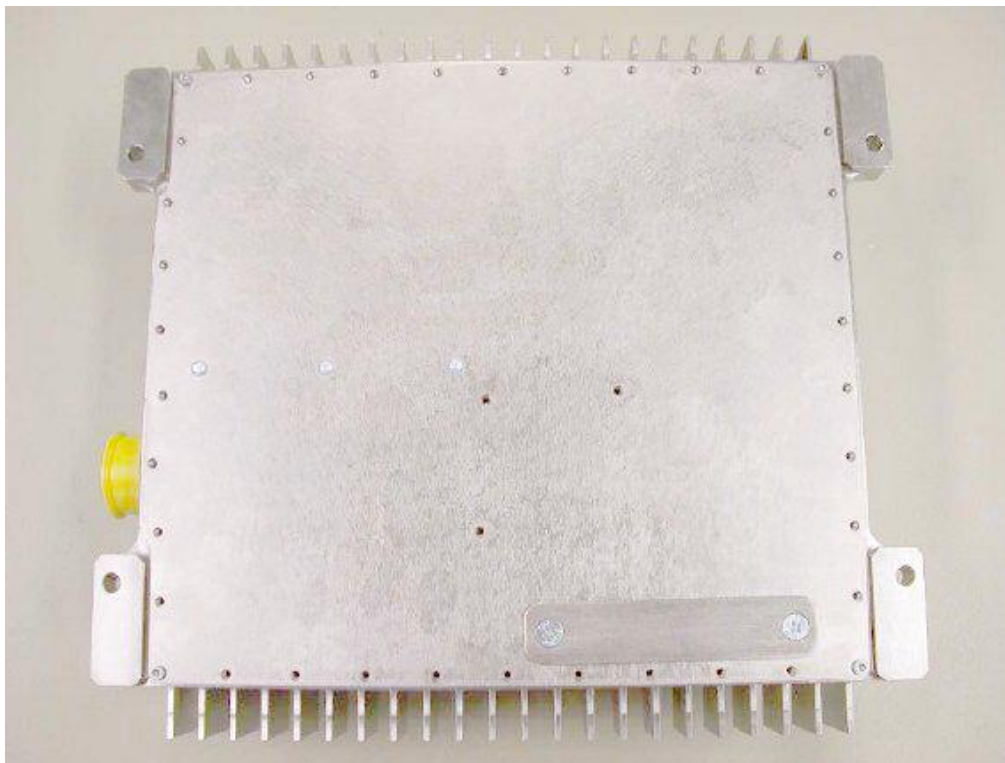


Figure 6: Underside of the PSM and CM module showing access port for connector J4