

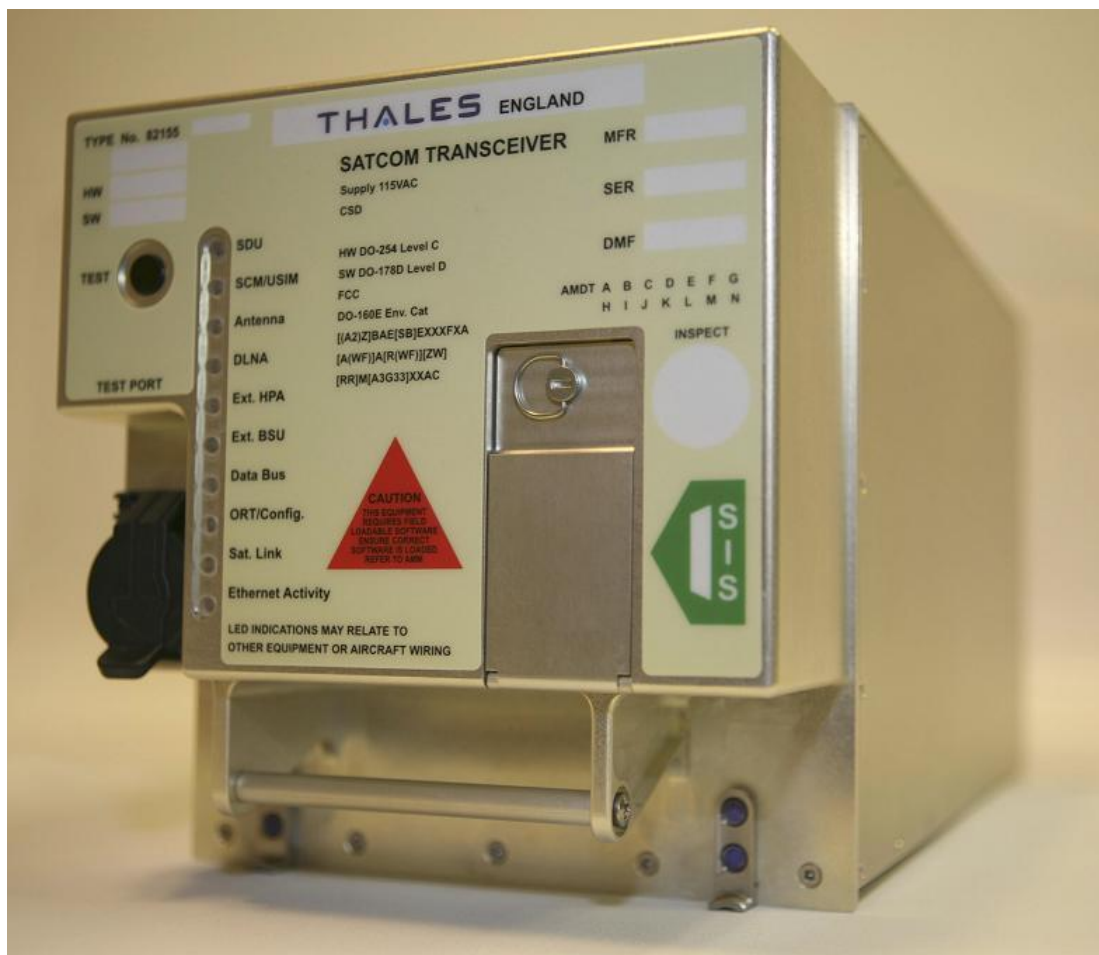
**THALES 'TOP FLIGHT' SATELLITE DATA UNIT (SDU)**  
**EXHIBIT 1 - LABEL**

Any enquiries concerning this document should be addressed to:

Satcom Product Group Manager  
Thales Avionics Limited  
88 Bushey Road  
London  
SW20 0JW

The copyright of this document is vested in Thales Avionics Limited, and the recipient should use it only for the purpose for which it was issued. The recipient shall not use the document in any manner that is competitive with or detrimental to the commercial interests of Thales Avionics Limited. Nor shall the recipient publish this document or make it available to any third party or in any other way divulge the contents or any technical expertise evident therein without Thales Avionics Limited prior written approval.

© Thales Avionics Limited 2007



**Figure 1: Placement of Part Label on SDU Front Panel**

Figure 1 shows the placement of the part label on the SDU. The artwork shown in Figures 2 and 3 details the main and secondary labels for the current production version. The FCC ID is not an Airbus requirement and so not shown on Figure 3. However, there is an engineering change reference, EC07/58, to get the FCC ID KV6-TFS-SDU82155A added to the secondary label. See Appendix for details of engineering changes.

Note that the following statement is included in the User Manual but cannot be found on the label:

"This device complies with part 15 of the FCC Rules. Operation is subject to the following two conditions: (1) This device may not cause harmful interference, and (2) this device must accept any interference received, including interference that may cause undesired operation."

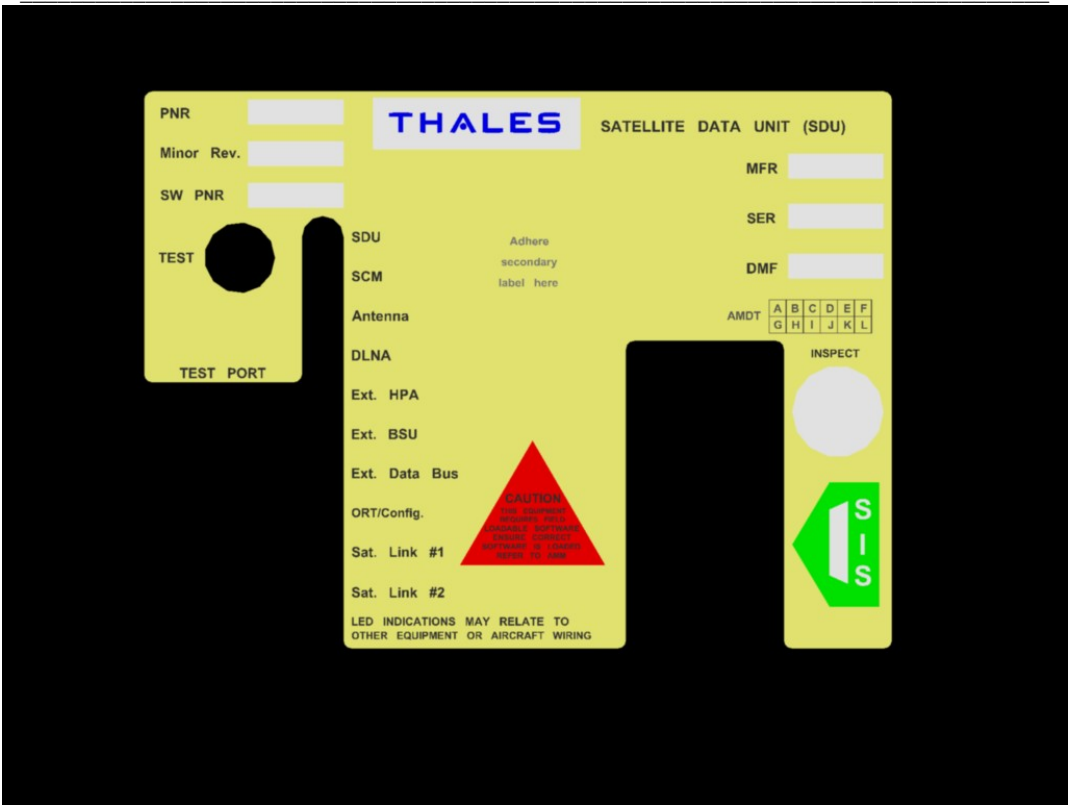


Figure 2: SDU Front Panel Main Label

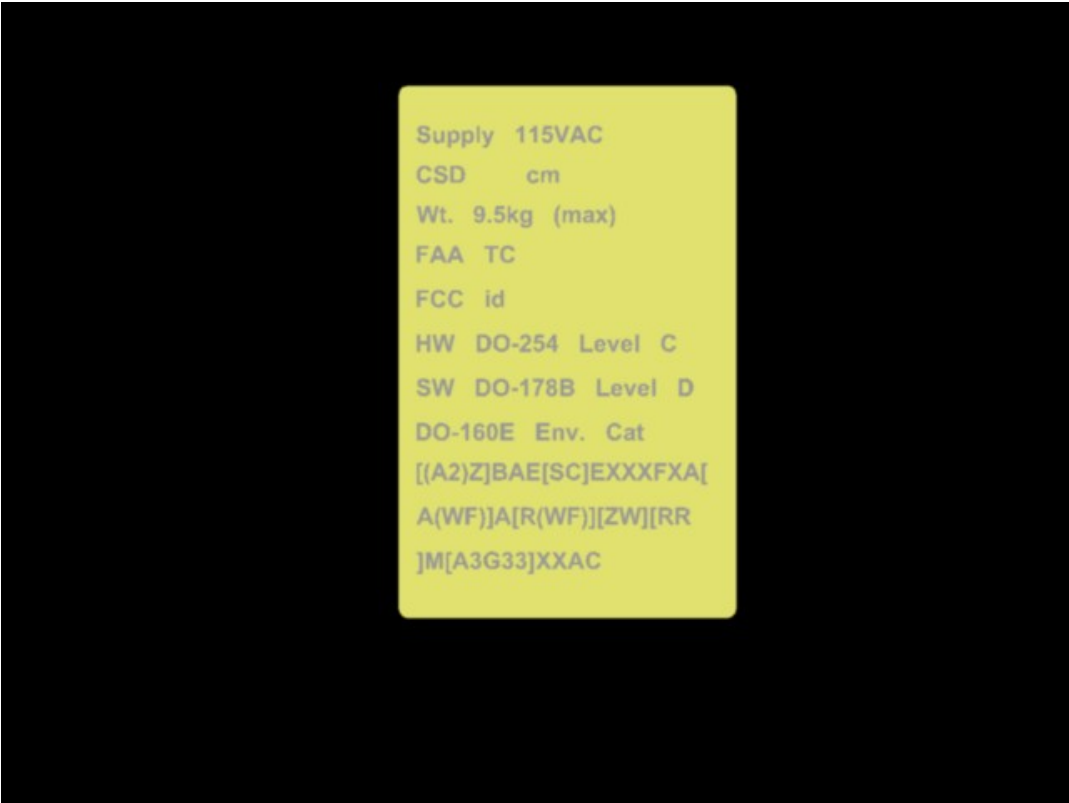


Figure 3: SDU Front Panel Secondary Label

APPENDIX : ENGINEERING CHANGE EC07/58

Date: 28/02/2007 : 15:37      EMA      livedb      EC07/58      Page: 1 of 2

THALES AVIONICS - Engineering Database - EMA v1.50 - DecAlpha

ENGINEERING CHANGE - EC07/58

System : SATCOM/TFS    L.R.U. : SDU    Class : PROD    Description : UPDATE OF MAIN UNIT LABELS  
Originator : S. Forrester    Telephone : 5236    Department : Prod. Engineering  
Date Created : 28/02/07 15:32  
Priority (2) : Execute: CCF within 48hrs, Drawings within 11 mths  
Production (3) : Component stock and kits

Works Order : 302 070 400 035

PDS Task Number :      BONAR Number :     

Miscellaneous References :

\*\*\*\*\* QUERY or REASON \*\*\*\*\*

MODIFY ALL LABELS AS DEFINED IN THE ATTACHED SET OF MARKED UP PRINTS  
82155/45 82155/54 82161/11 82164/11 82163/11  
CHANGES TO ALLOW USE OF A STANDARDISED LENGTH BAR CODE LABEL -32MM  
TO ADD CSD FIGURES AND OTHER GENERAL AMENDMENTS

\*\*\*\*\* APPROVAL LOG DETAILS \*\*\*\*\*

Job Function	Date	EC Approver	Signature	Telephone
Production Engineer	28 Feb 07	S. FORRESTER		5236
Project Manager	13/03/07	P. MESSIAEN		5286
Design Authority	5/3/07	I. FERRERES		5233
Quality Manager	14 Mar 07	S. GAGE		5245
Change Control	16/3/07	J. BRASHIN		5245

\*\*\*\*\* PARTS AFFECTED \*\*\*\*\*

Sz Part Number	PTp	Description	Code	Iss	BSR	Alt Number	MOD s/o
A2 82155/45	DET	TFS SDU FRONT PANEL LABEL	DC	1			
A3 82155/54	DET	TFS SDU SECONDARY LABEL	DC	A			
A3 82158/11	DET	TFS SCH LABEL	DC	A			
A3 82161/11	DET	TFS DLNA LABEL	DC	1			
A3 82163/11	DET	TFS IGA LABEL	DC	2			
A3 82164/11	DET	TFS AIN LABEL	DC	1			

Date: 28/02/2007    Time: 15:37    EMA    livedb    EC07/58    Page No: 2 of 2

DO ACTION

MODIFY DRAWINGS TO MARKED UP PRINTS  
MASTERS

COMPUTERIZED  
15 MAR 2007

Figure 4: Labels Undergoing Engineering Changes



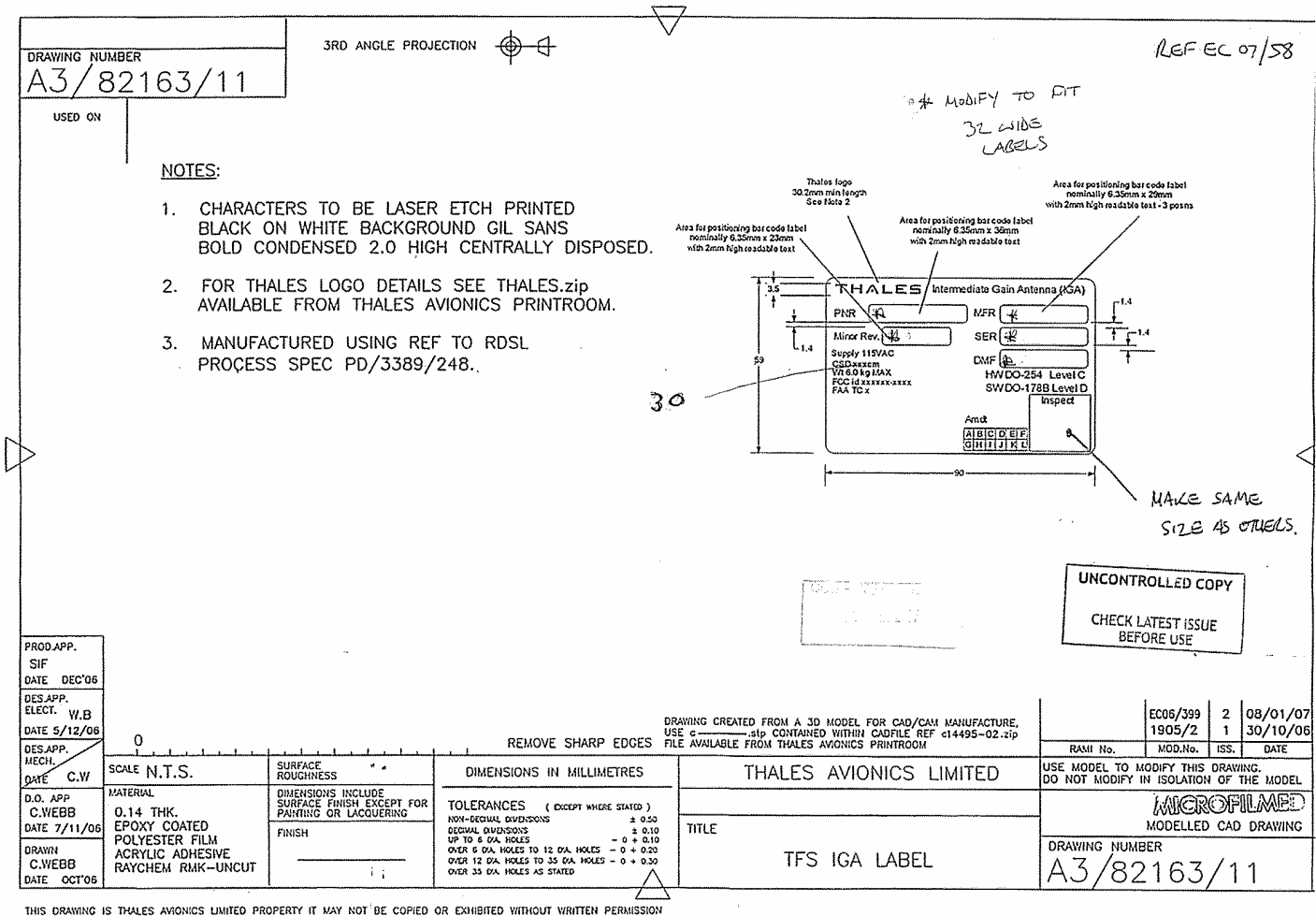


Figure 6: Marked-Up Engineering Changes for IGA Label

### Figure 7: Marked-Up Engineering Changes for DLNA Label

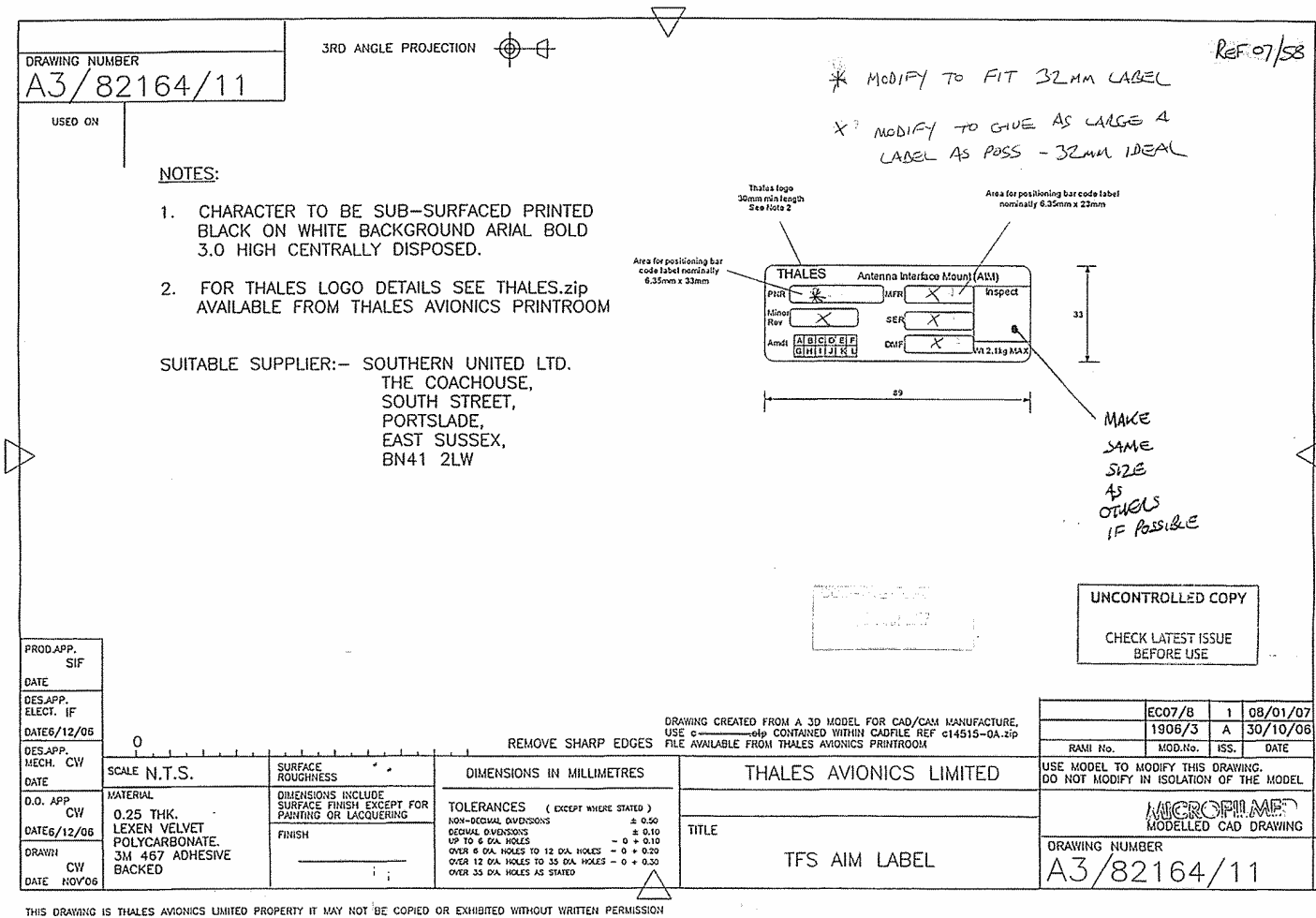


Figure 8: Marked-Up Engineering Changes for Antenna Interface Mount Label



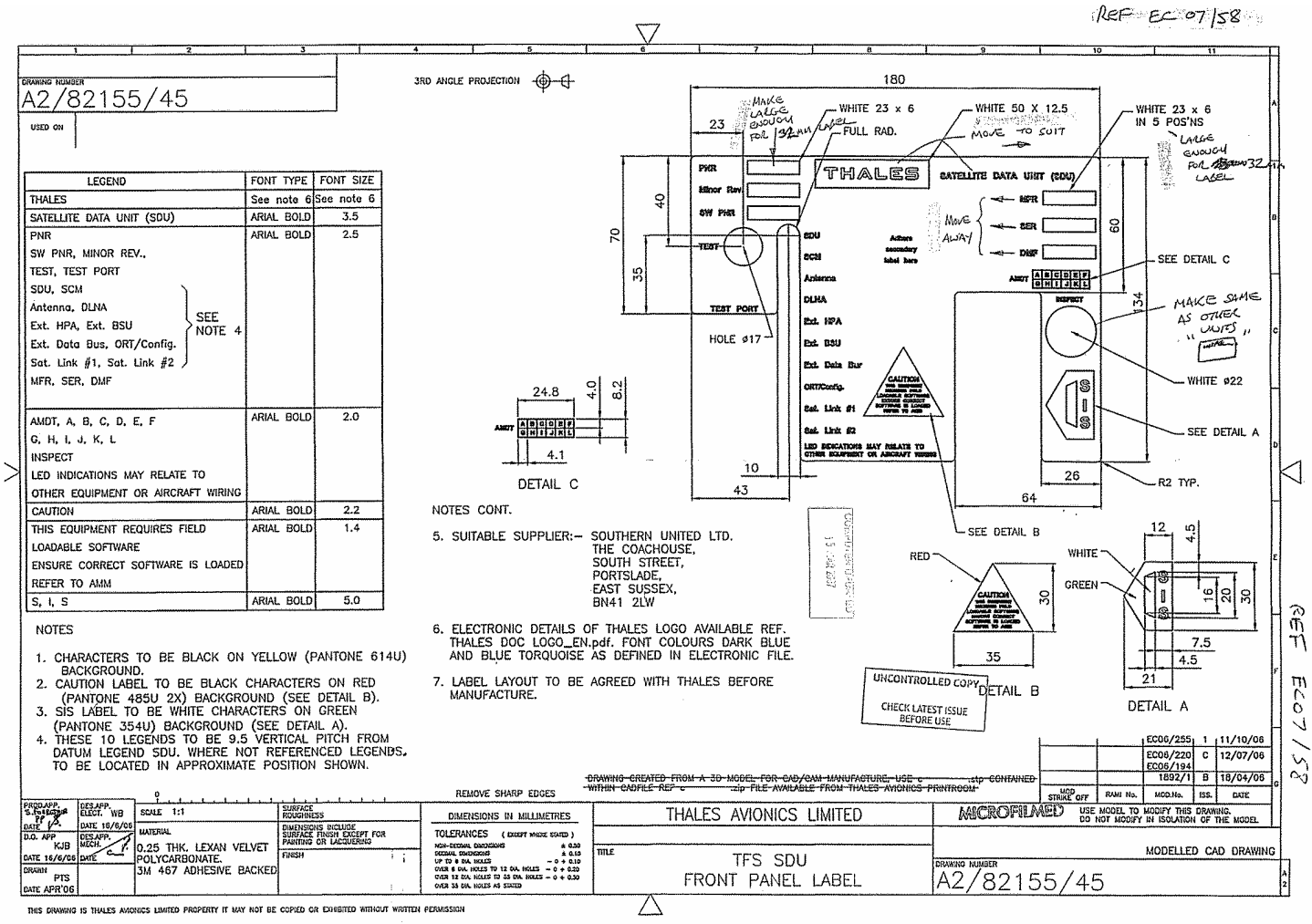


Figure 9: Marked-Up Engineering Changes for SDU Front Panel (Primary) Label

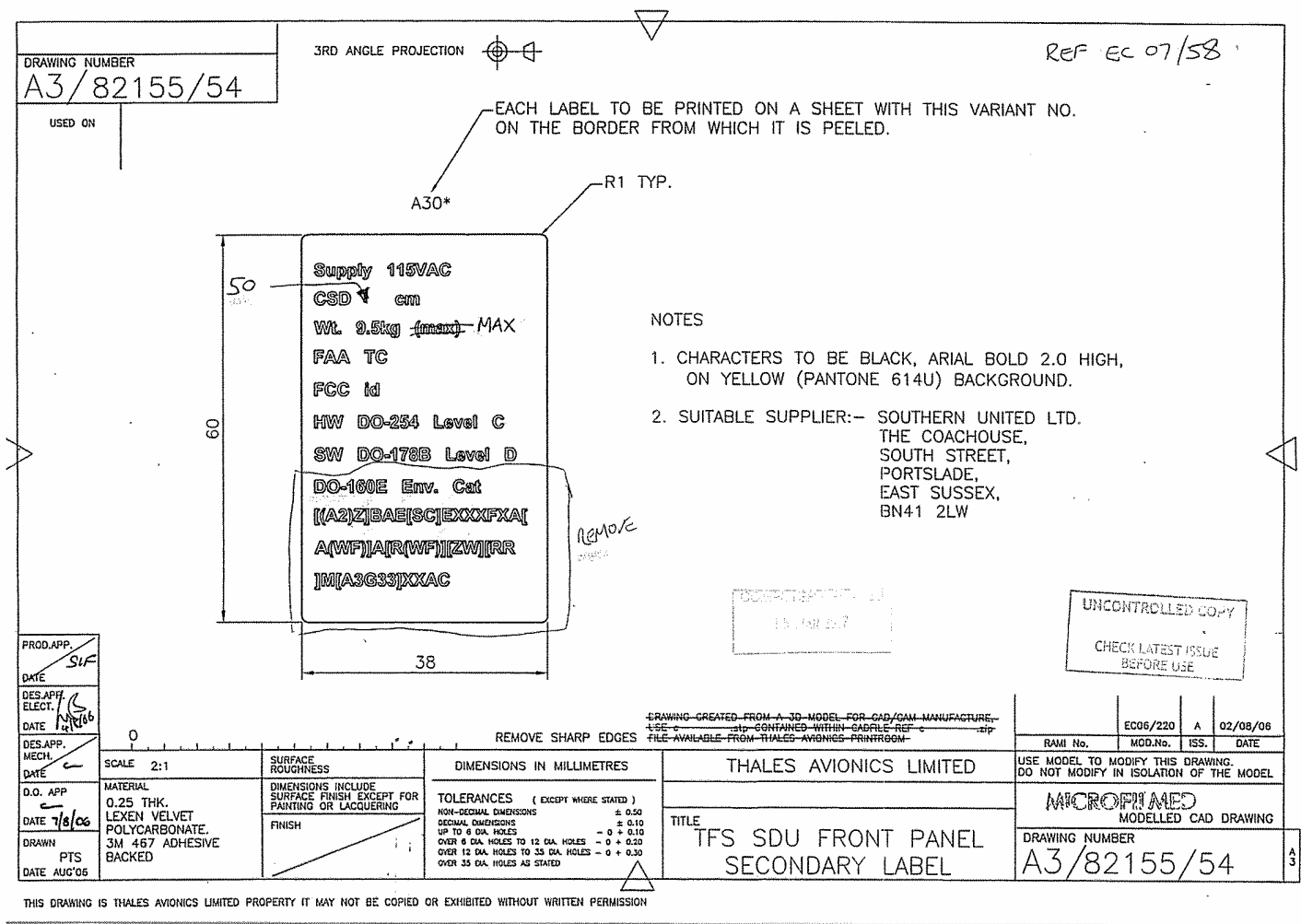


Figure 10: Marked-Up Engineering Changes for SDU Front Panel (Secondary) Label