



Photo 1 - Base Front



Photo 2 - Base Rear

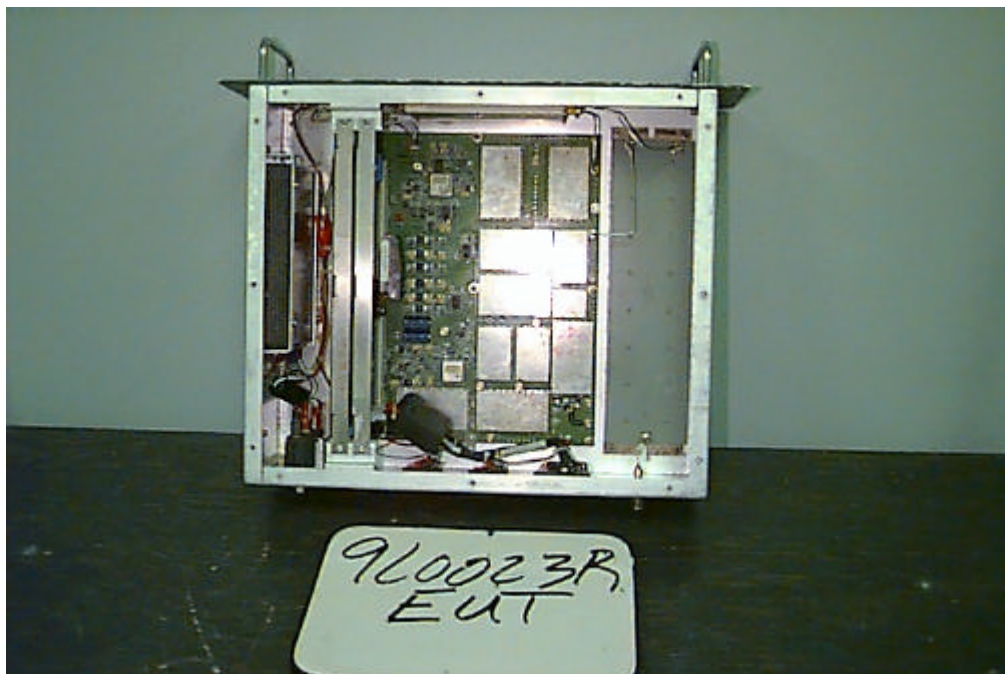


Photo 3 - Base Internal

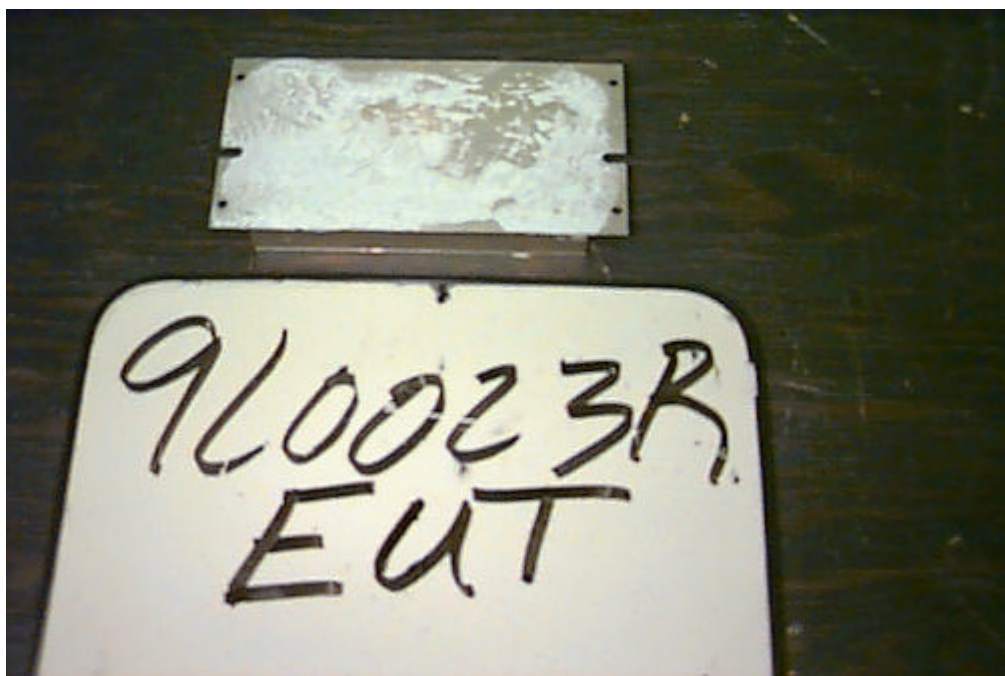


Photo 4 - PA Module Bottom



Photo 5 - PA Module Top

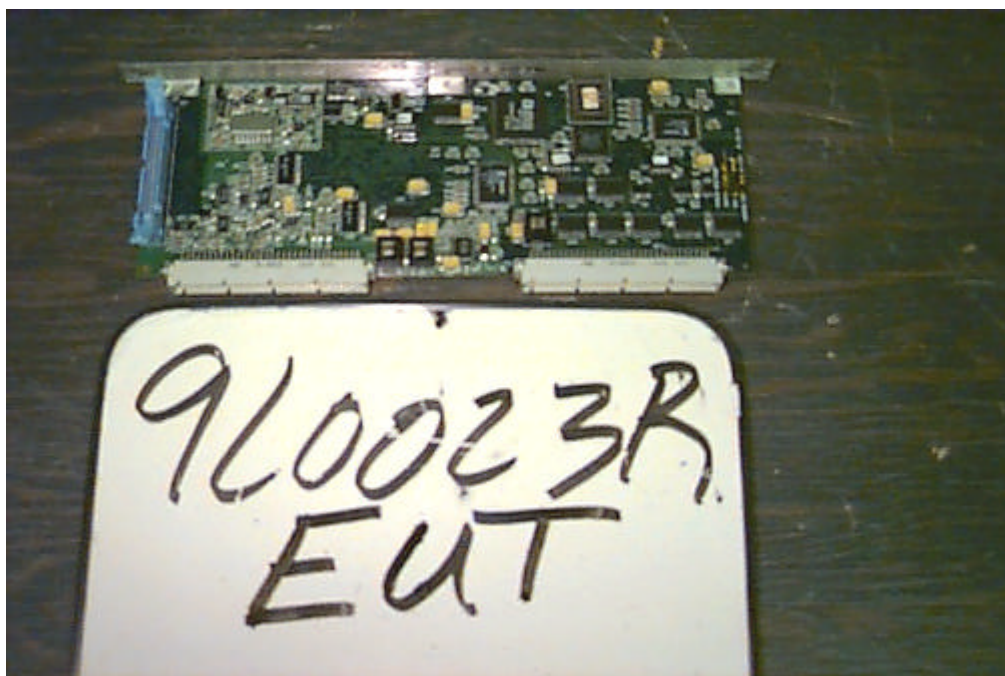


Photo 6 - Baseband and IF card - top

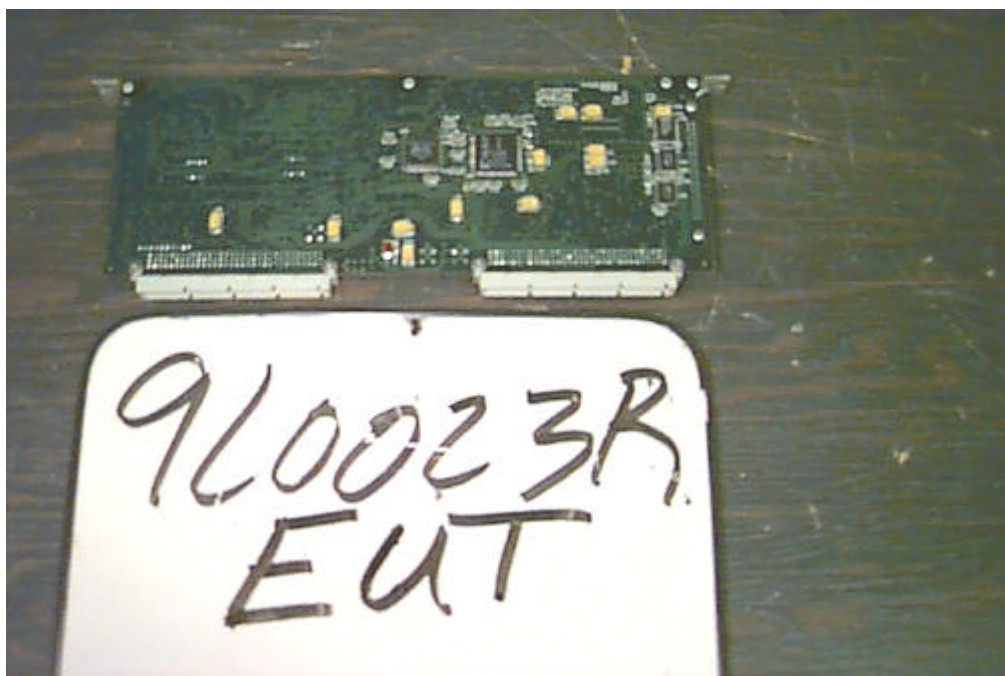


Photo 7 - Baseband and IF card bottom

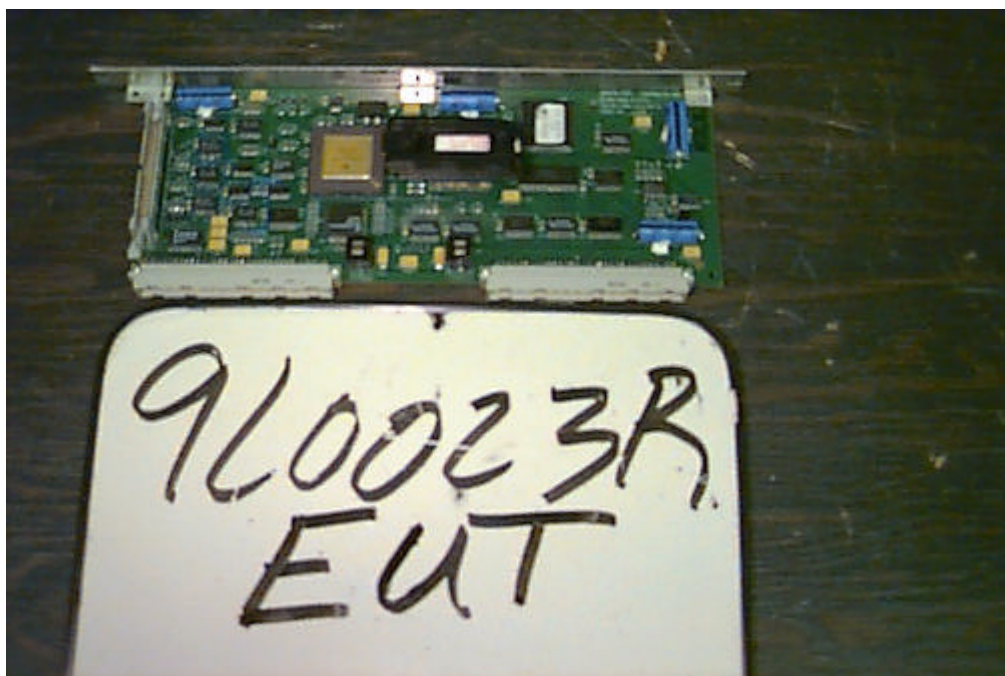


Photo 8 - Controller card - top

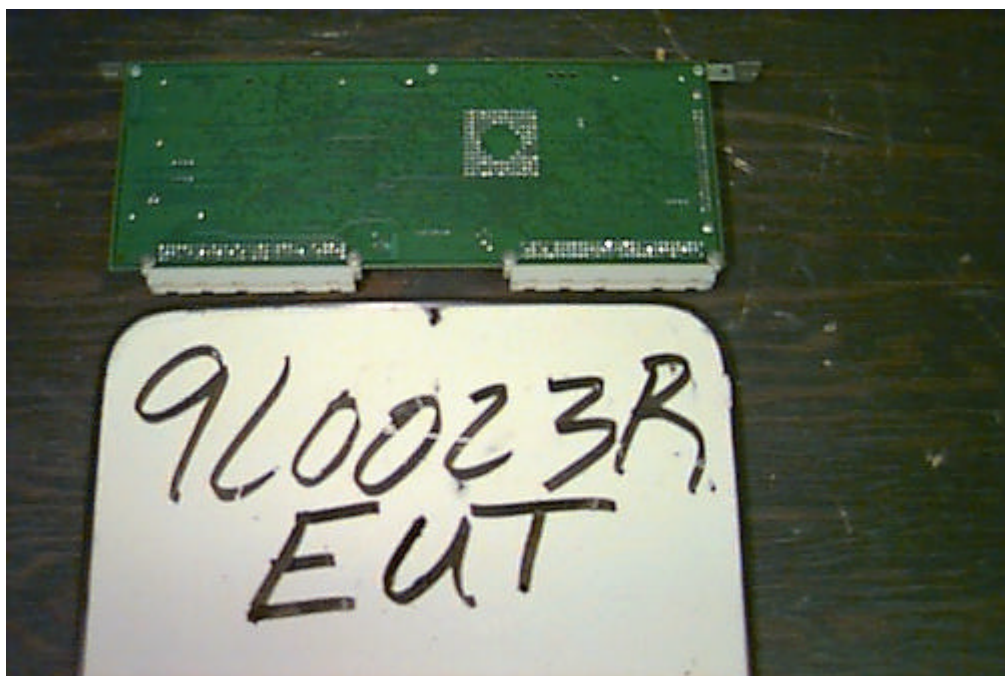


Photo 9 - Controller card bottom

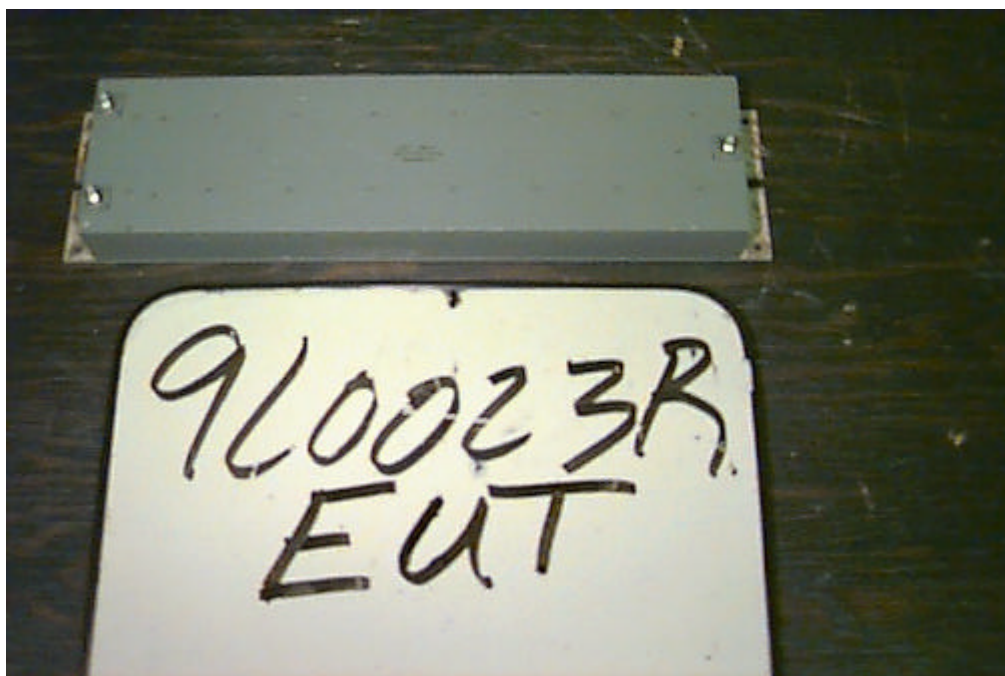


Photo 10 - Diplexer module

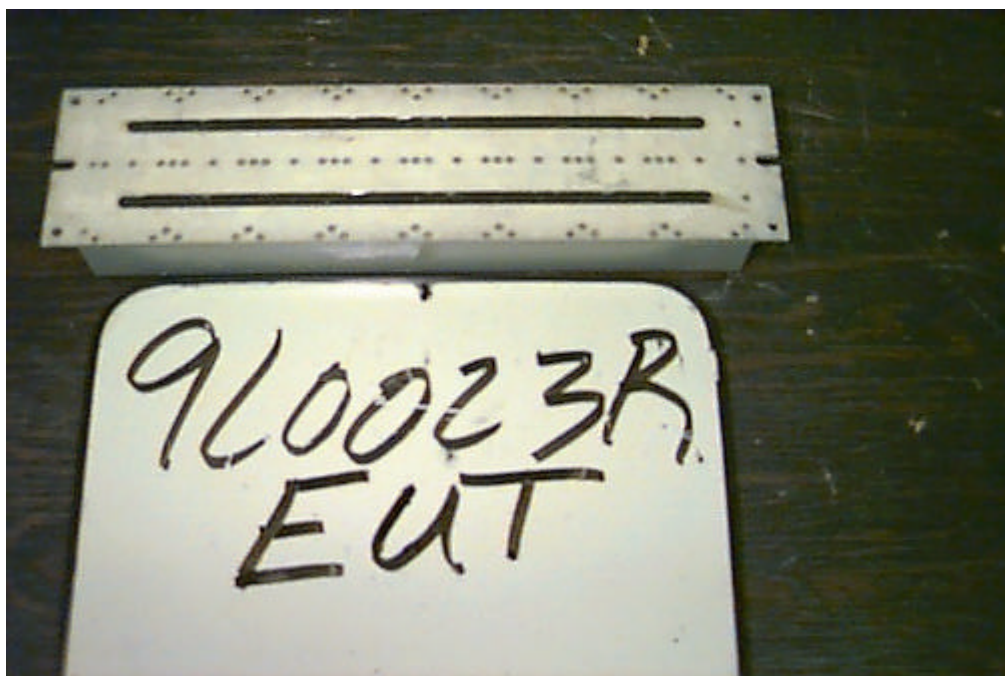


Photo 11 - Diplexer module bottom



Photo 12 - Motherboard top with shields

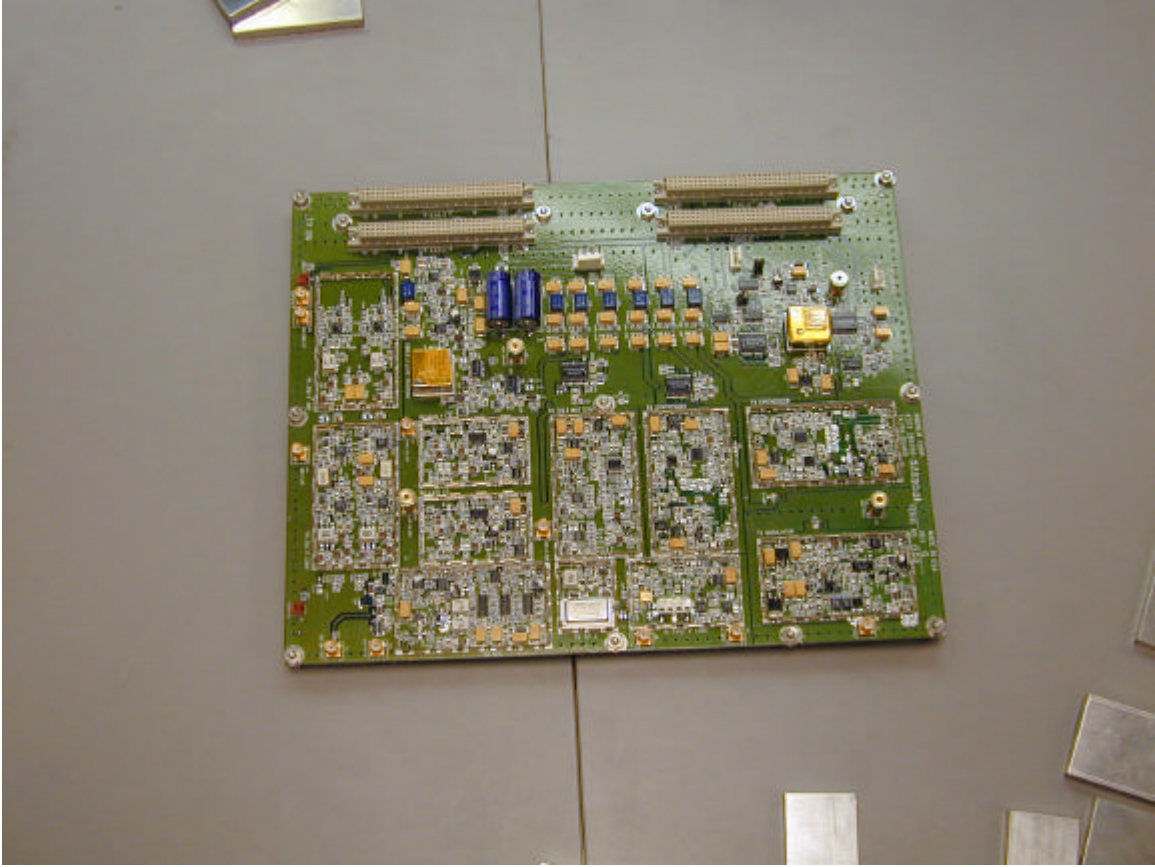


Photo 13 - Motherboard without shields

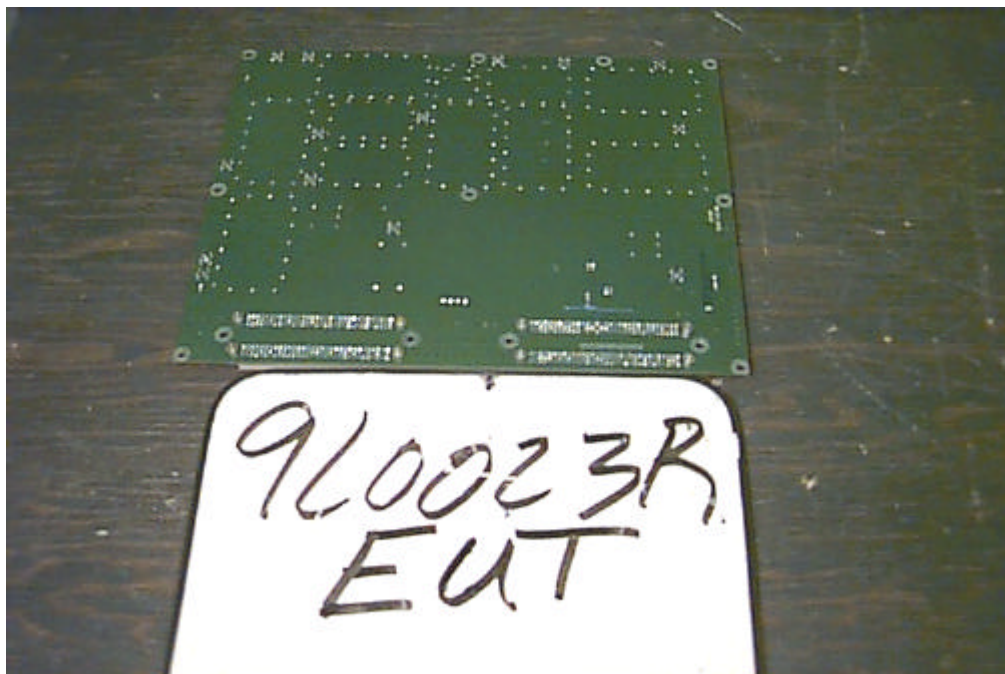


Photo 14 - Motherboard bottom

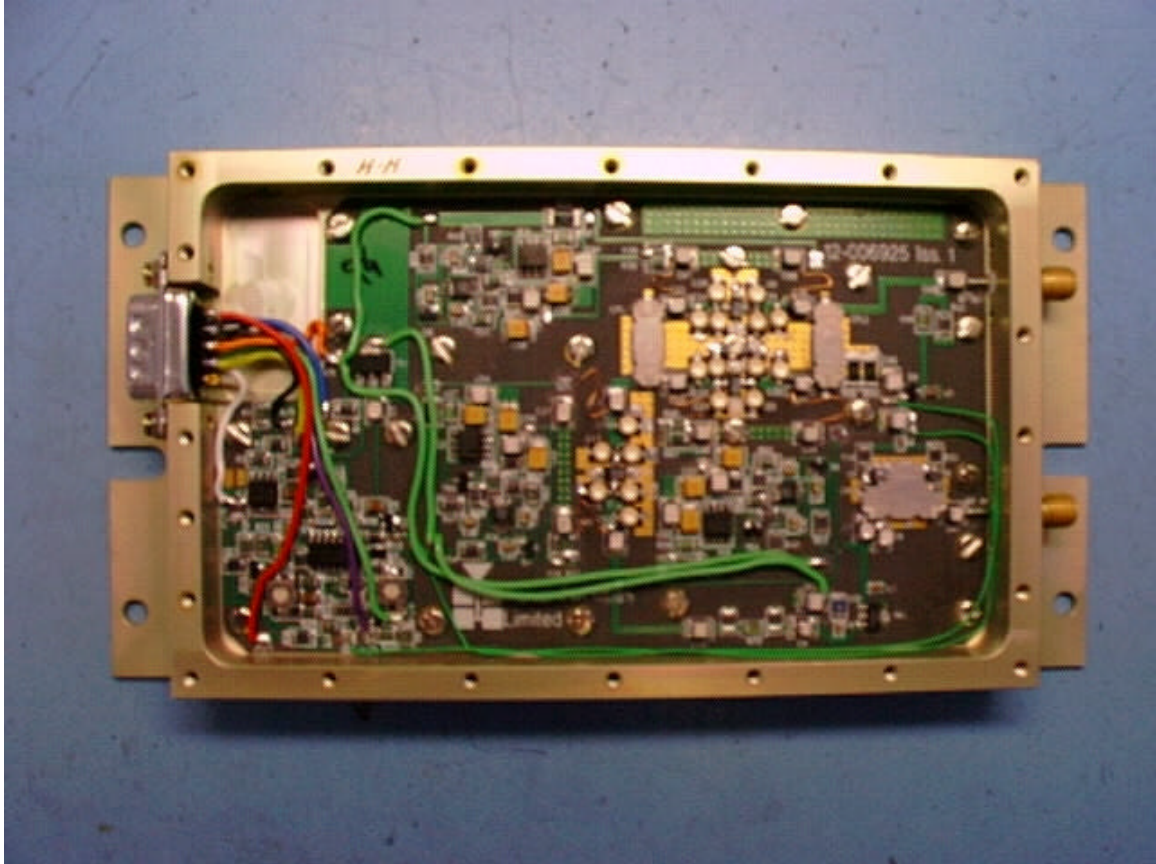


Photo 15 - Base PA module



Photo 16 - Line Amplifier External View



Photo 17 - Line Amplifier External View Side

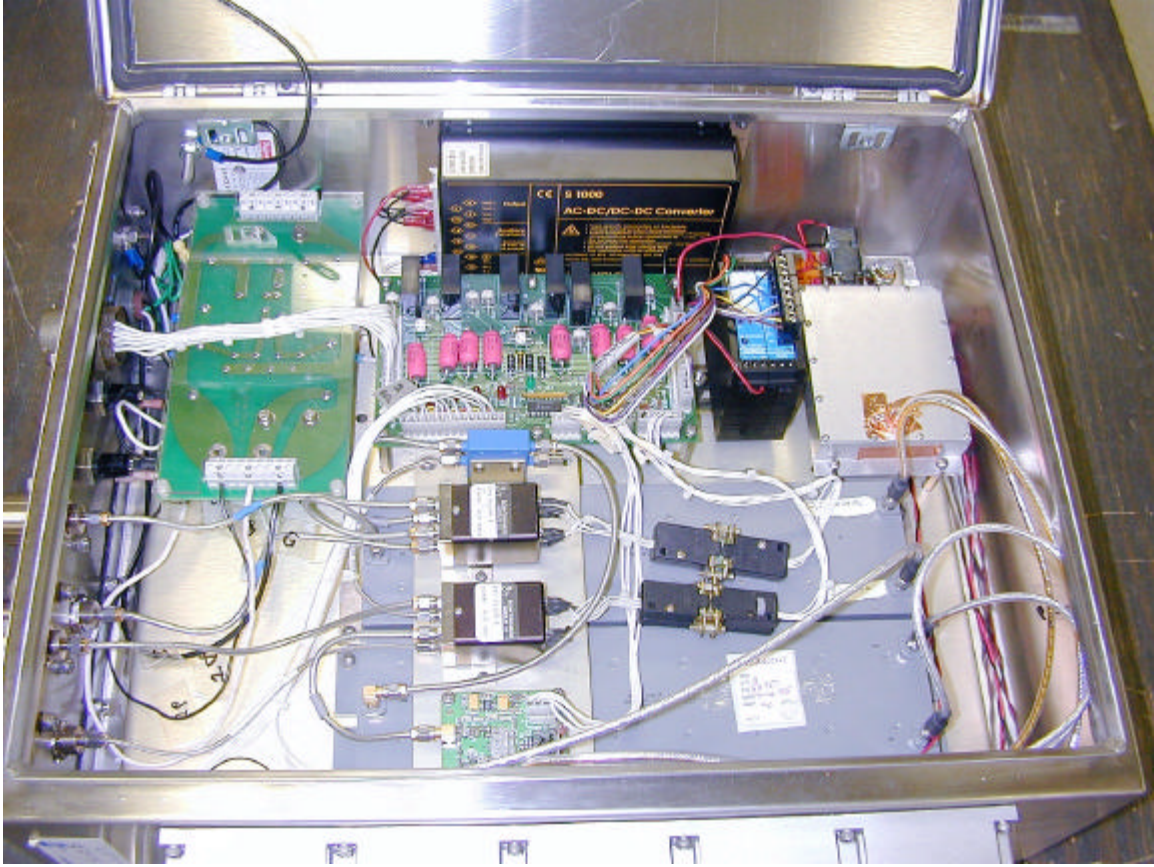


Photo 18 - Line Amplifier Internal View



Photo 19 - AC/DC converter module

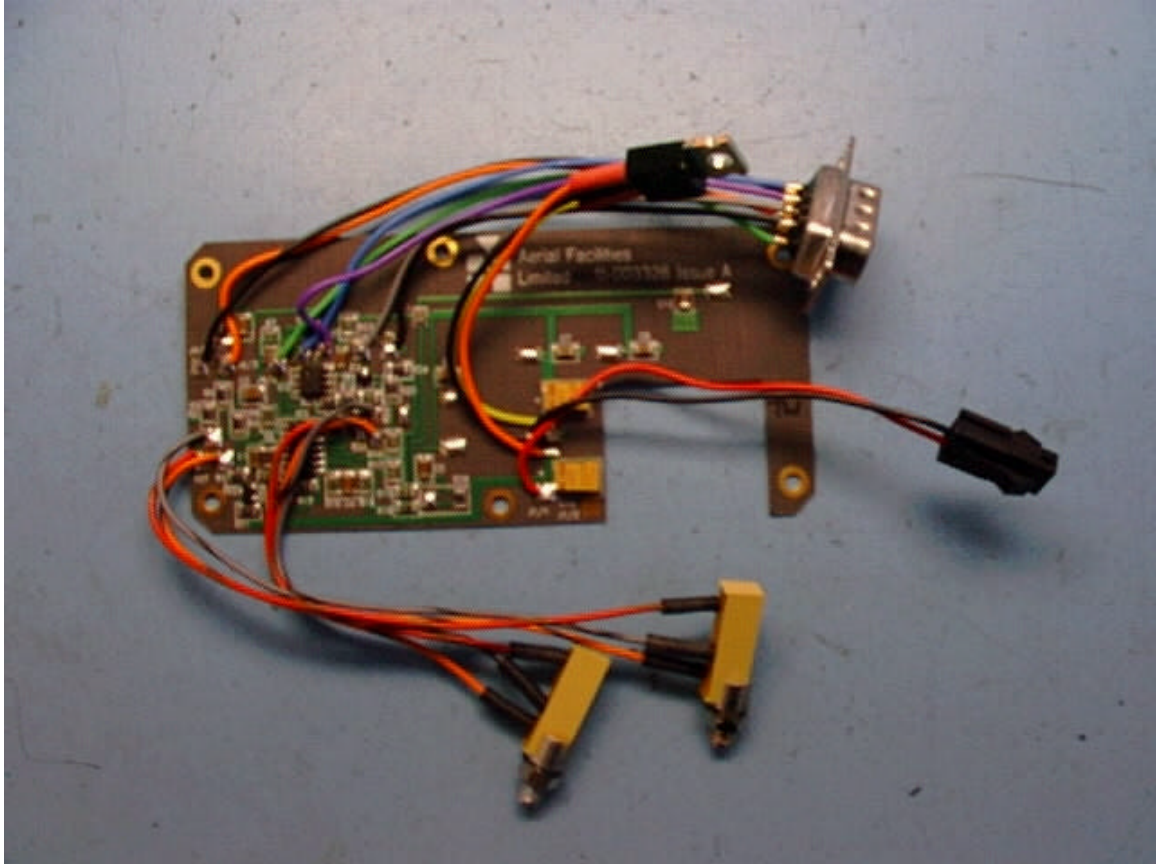


Photo 20 - Line Amplifier LNA Control board

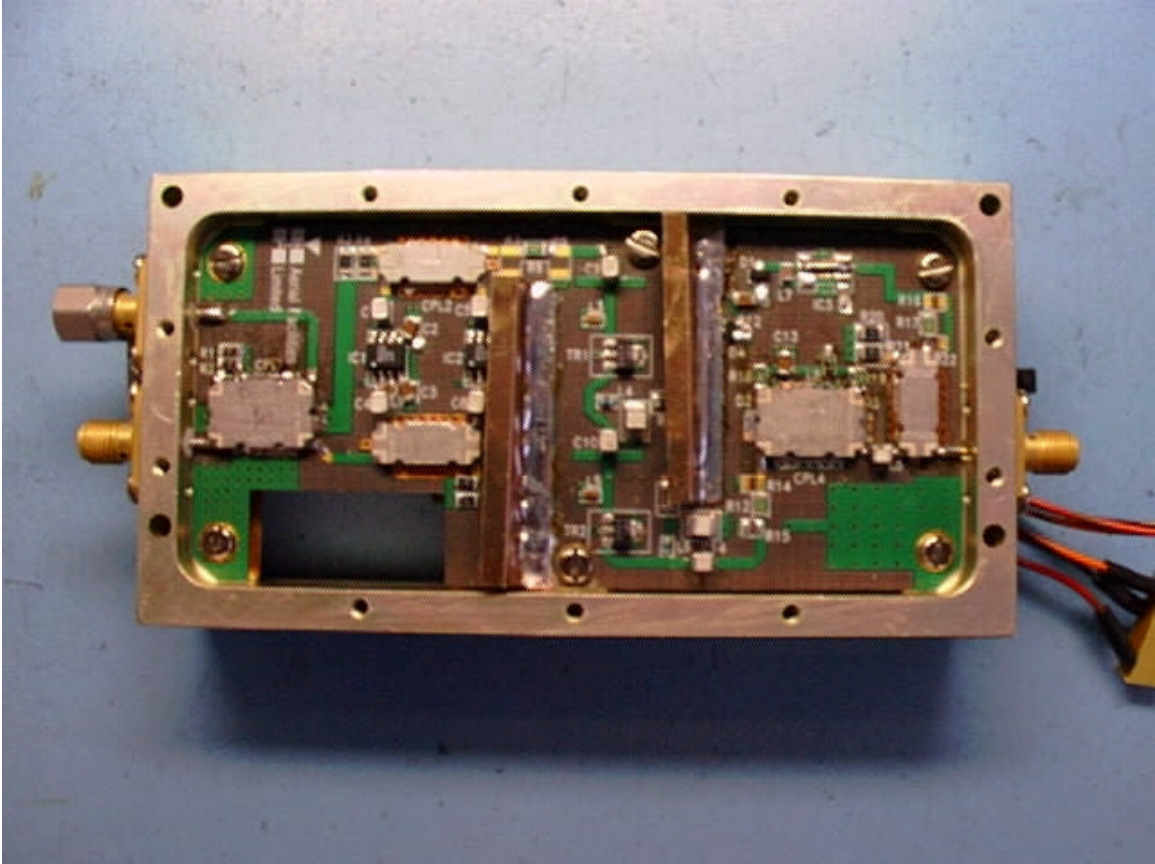


Photo 21 - Line Amp LNA module top

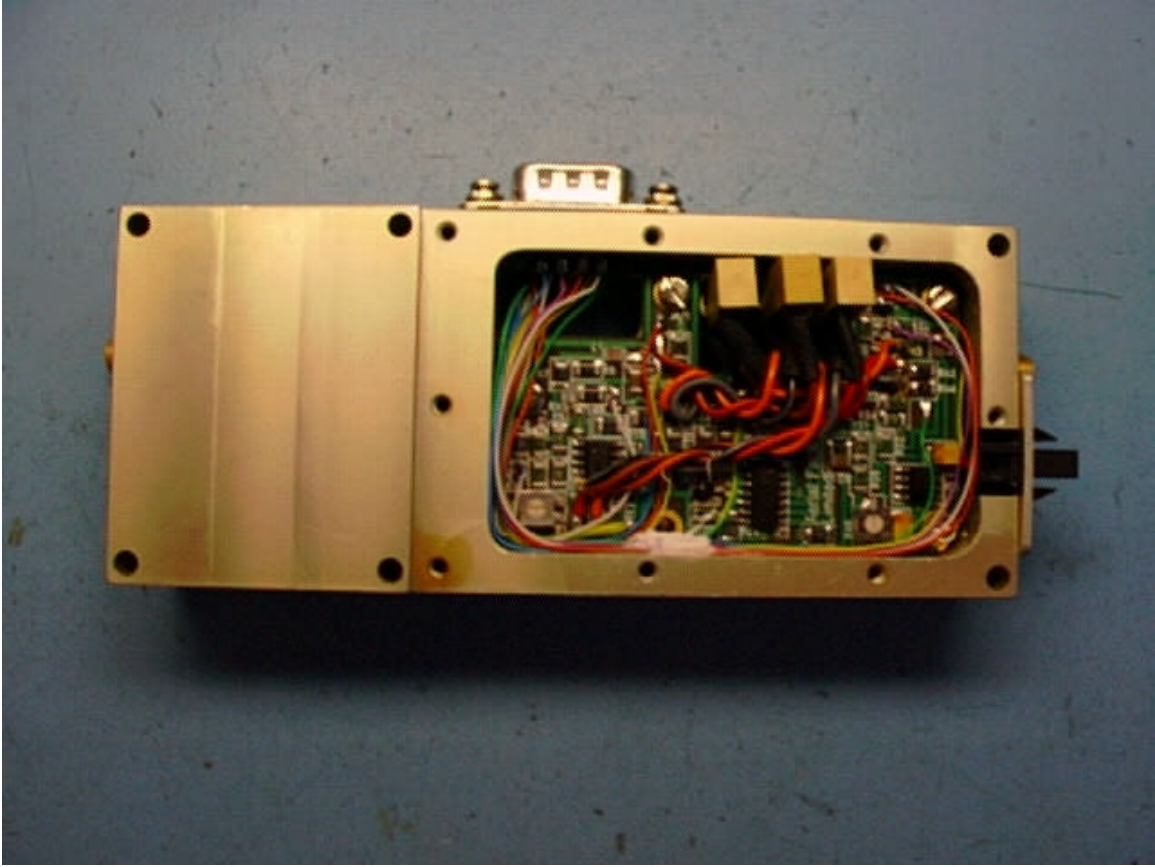


Photo 22 - Line Amp PA module

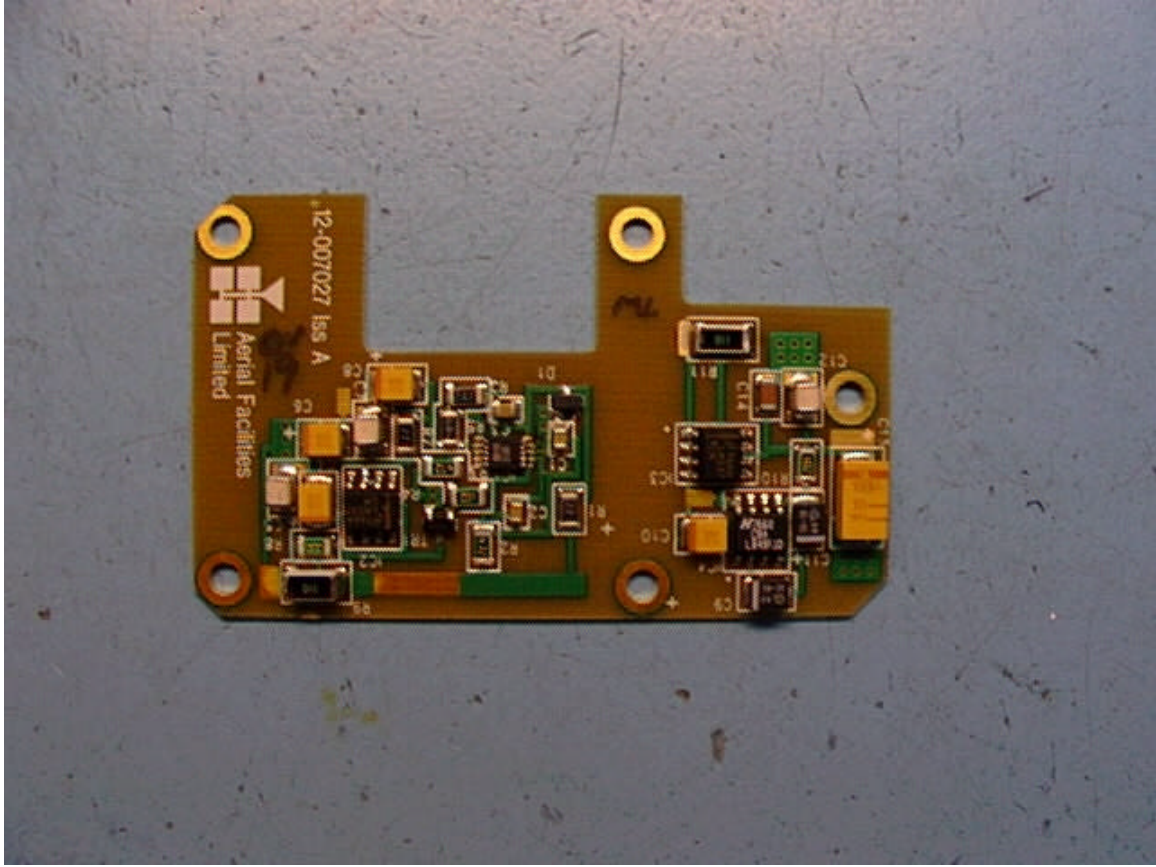


Photo 23 - Line Amp Control Board

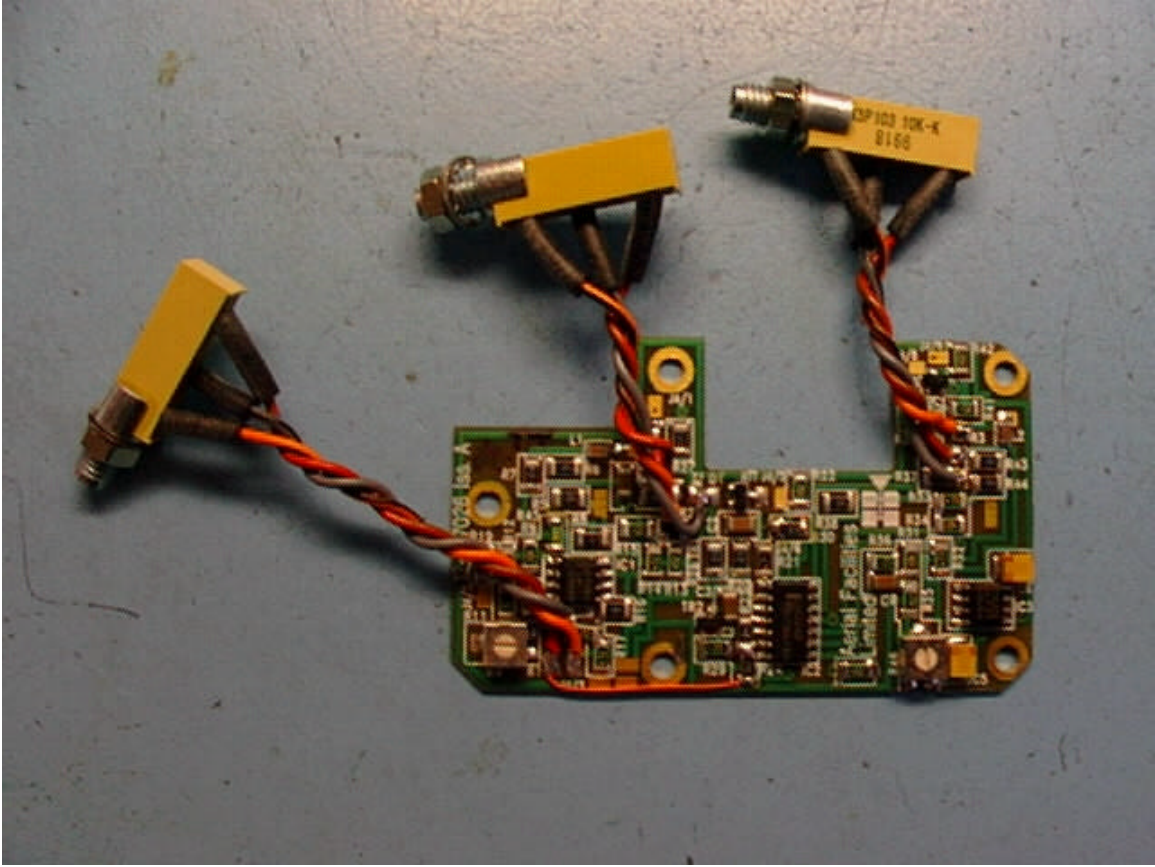


Photo 24 - Line Amp PA

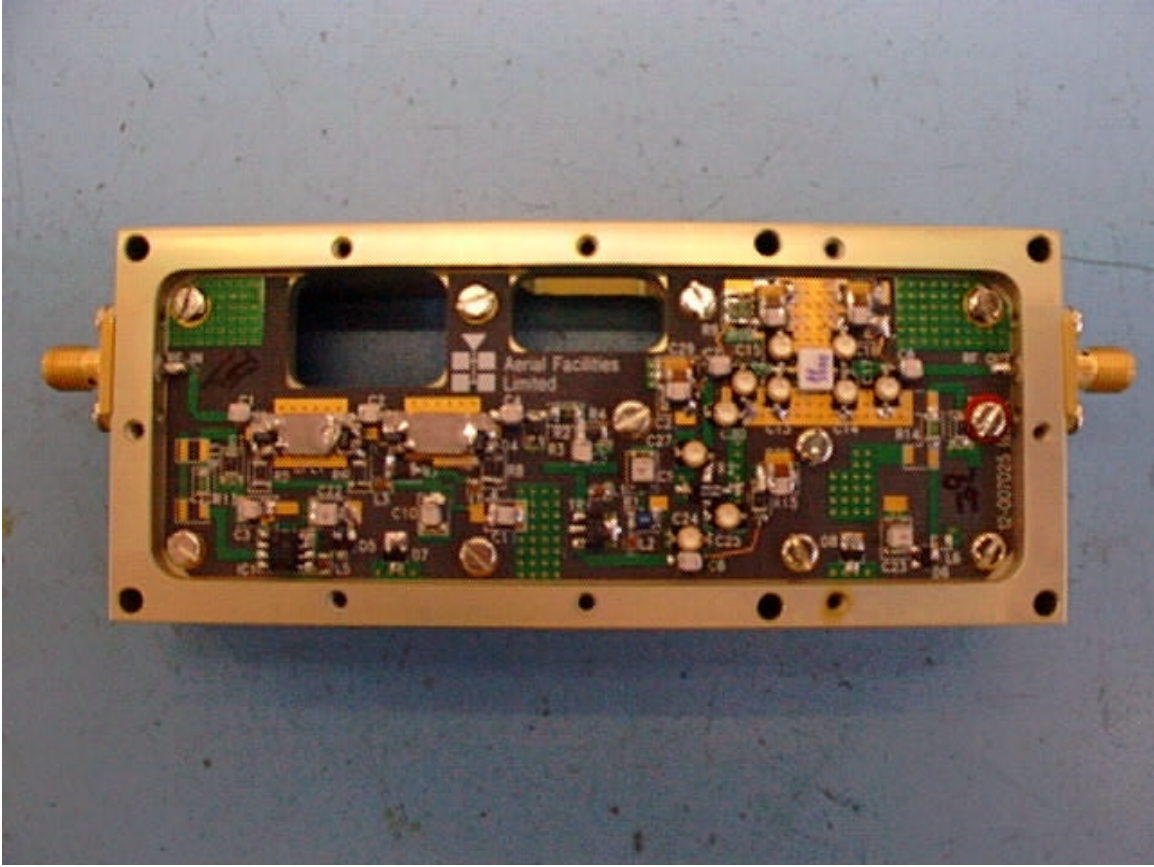


Photo 25 - Line Amp PA module top



Photo 26 - Line Amp PA module bottom