

hp

REF -60.0 dBm

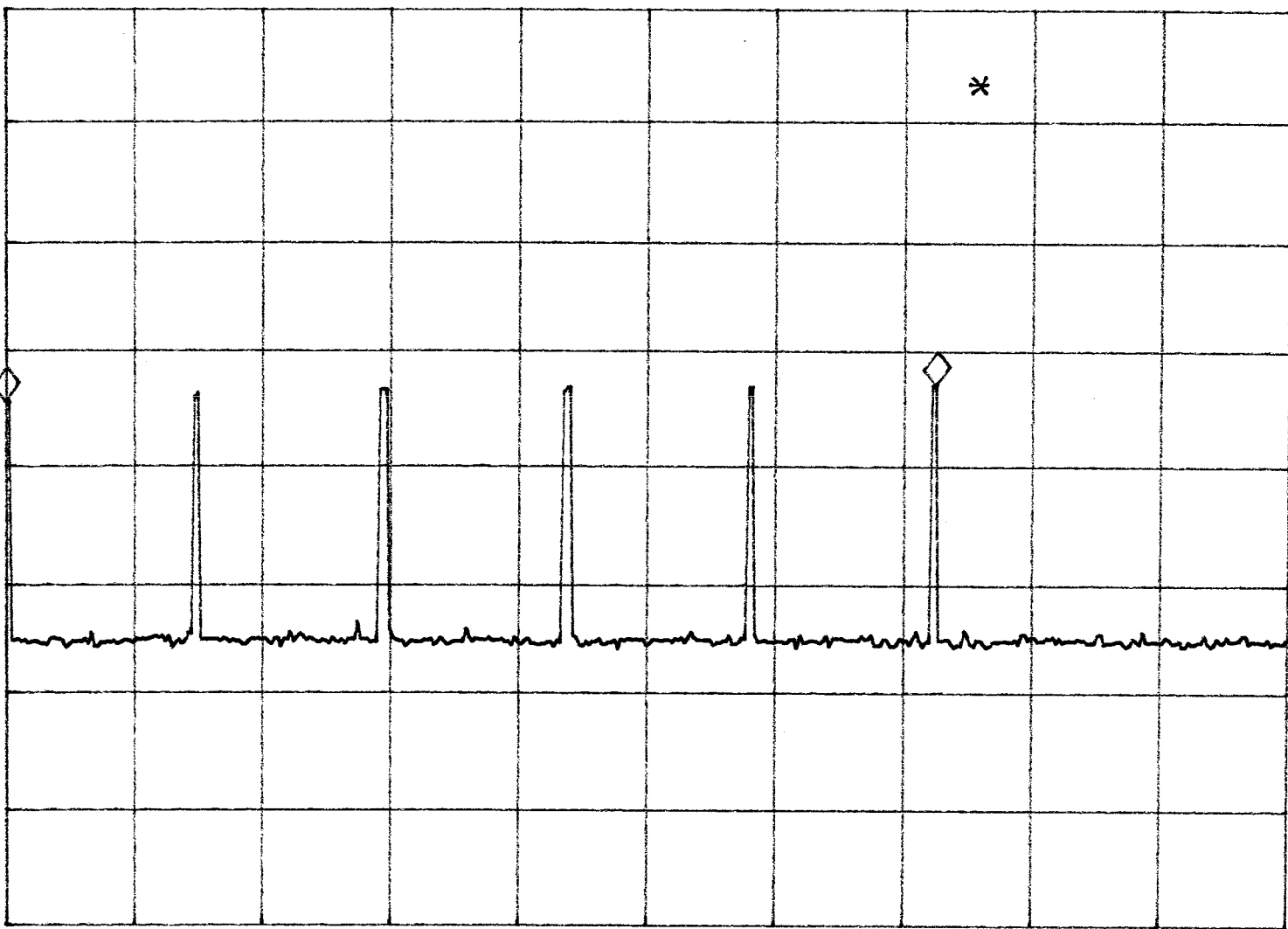
AT 10 dB

MKR 4.3500 sec

1.56 dB

PEAK
LOG
10
dB/

VA SB
SC VS
CORR



CENTER 316.000 MHz

SPAN 0 Hz

#RES BW 1.0 MHz

VBW 300 kHz

#SWP 6.00 sec

1/17

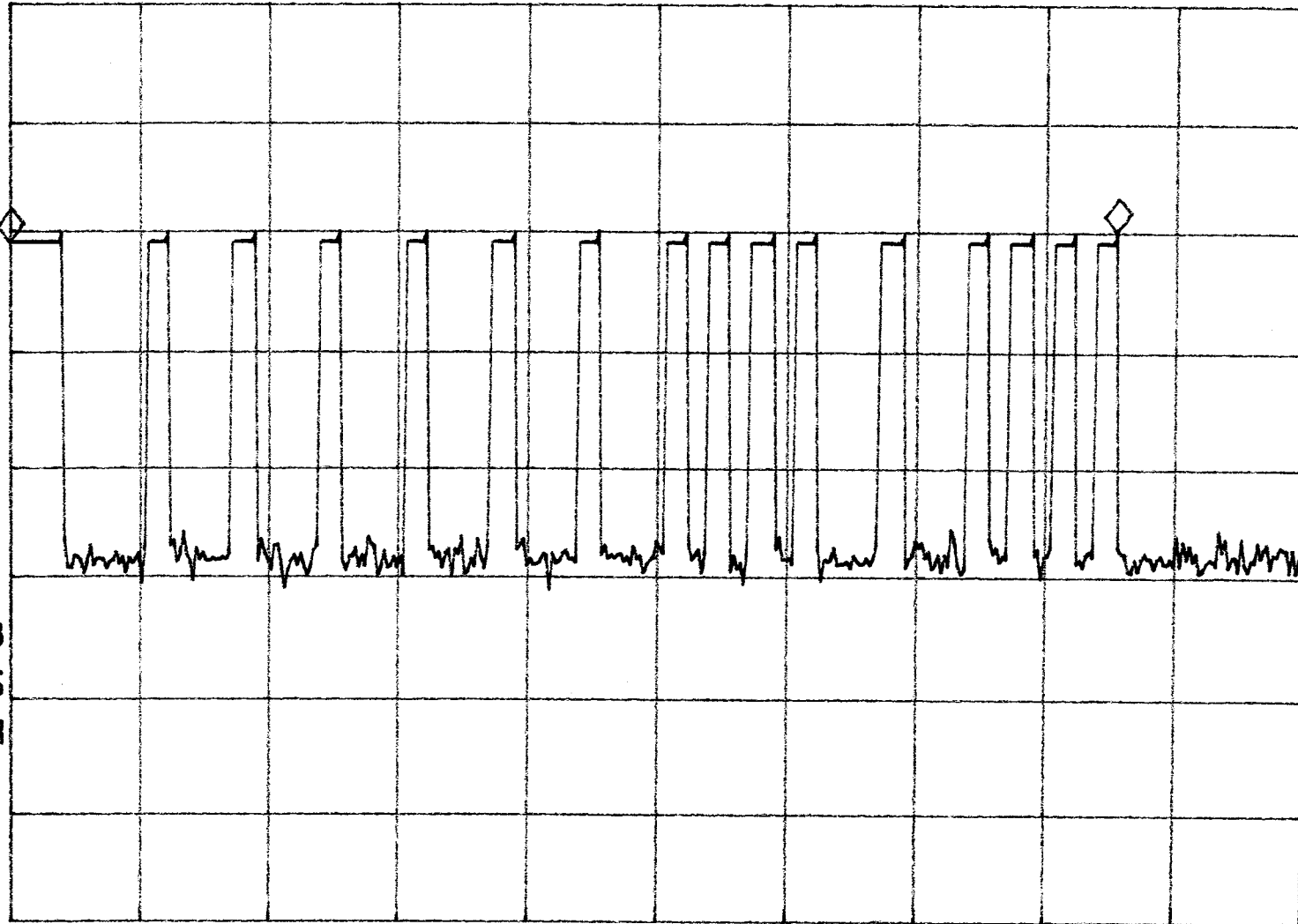
MKR 25.650 msec

REF -30.0 dBm

AT 10 dB

1.14 dB

PEAK
LOG
10
dB/



$$D.C = \frac{(1.23) + (15 \times 0.45 \text{ ms})}{25.65 \text{ ms}}$$

$$= 0.311$$

$$A.F = -10.1 \text{ dB}$$

WA SB
SC VS
CORR

CENTER 318.000 MHz

SPAN 0 Hz

#RES BW 1.0 MHz

#VBW 300 kHz

#SWP 30.0 msec

hp

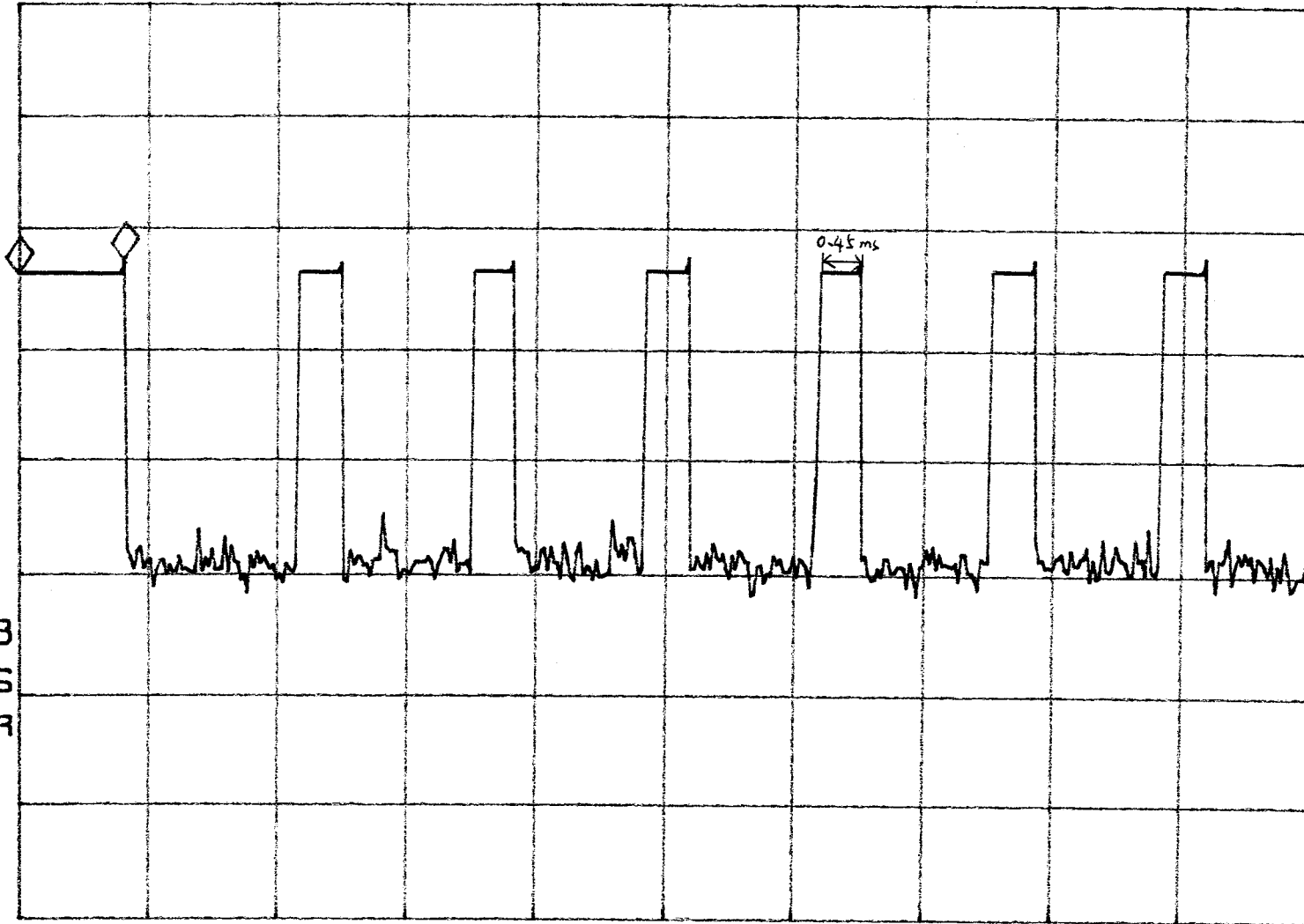
MKR 1.2370 msec

REF -30.0 dBm

AT 10 dB

1.18 dB

PEAK
LOG
10
dB/



WA SB
SC VS
CORR

CENTER 318.000 MHz

SPAN 0 Hz

#RES BW 1.0 MHz

#VBW 300 kHz

#SWP 15.0 msec