

# Wall Mount Transmitter

Model TB-318

## 1. INTRODUCTION

Thank you for your purchase of a SkylinkHome™ Lighting Automation, Wall Mount Transmitter, Model TB-318. This transmitter allows you to wirelessly operate different lighting fixtures with the SkylinkHome™ lighting receiver modules.

All wireless signal communications within the SkylinkHome™ lighting system are based on rolling code technology to ensure highest security is used.

You will find the following in this package:

- Wall Mount Transmitter
- Mounting Accessories & Double-sided Foam Tape
- Lithium Battery CR-2032
- User's Instructions



Wall Mount Transmitter



Lithium battery  
Accessories



Double-sided Foam Tape

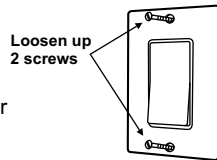
Before you can control the lights with the transmitter, you need to program it to a receiver module. Follow the instructions below to program the transmitter to a receiver module.

## 2. PROGRAMMING TRANSMITTER TO RECEIVER MODULE

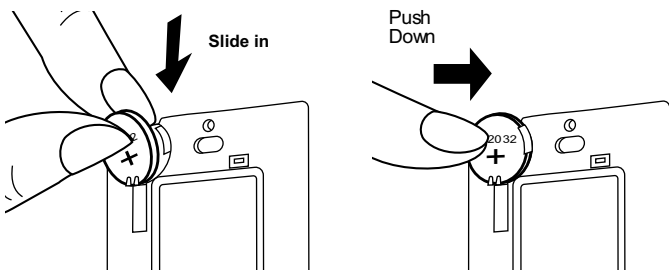
In order to operate the receiver module remotely with a transmitter, it must be programmed to the receiver module.

To program a transmitter into the receiver module, follow the instructions below.

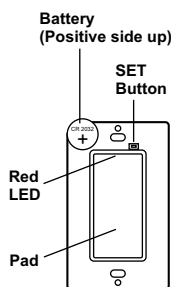
1. Remove the wall plate from the Wall Mount Transmitter by loosening up the 2 screws.
2. Insert the battery to the Wall Mount Transmitter as shown. Please note on the polarity, positive side up. When the battery is installed, the red LED on the transmitter will be on for 1 second.



Loosen up 2 screws



3. Put the receiver module that you plan to program into programming mode. Refer to the User's Instructions of that receiver module.
4. Once the receiver module is in programming mode, you may transmit the programming signal from the transmitter by pressing the "SET" button on the transmitter. The red LED on the transmitter will be on.
5. Activate the Wall Mount Transmitter by pressing the pad on the front. Its red LED will flash then off.
6. Once the transmitter is programmed, the receiver module will quit from programming mode.
7. You may operate the light with the programmed transmitter.



Battery (Positive side up)

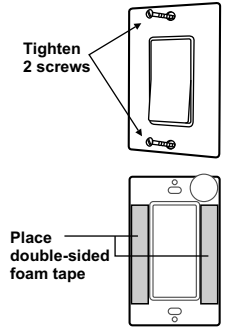
SET Button  
Red LED  
Pad

## 3. INSTALLATION

After programming, you are now ready to install the Wall Mount Transmitter.

You may use double sided foam tape to stick the transmitter on the wall, or you may use screws to mount the transmitter.

Using double sided foam tape:  
Place the 2 double sided foam tape on the back of the back plate. Clean the surface of the wall where you plan to install the back plate. Peel off the foam tape and stick it to the wall surface.

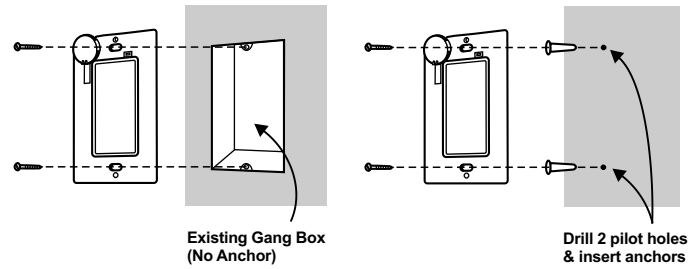


Tighten 2 screws

Place double-sided foam tape

Using screws:

If you are using screws, tighten the back plate of the wall mount transmitter by the 2 screws provided. If you are installing the back plate to an existing wall switch with gang box, no need to use the anchors. Otherwise, drill 2 small pilot holes based on the 2 mounting screw positions and insert the anchors before tightening the back plate with screws. After securing the back plate, either by double sided foam tape or screws, tighten the 2 screws on the front to secure the front plate.

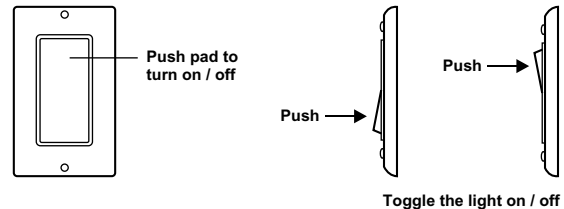


Existing Gang Box (No Anchor)

Drill 2 pilot holes & insert anchors

## 4. ON / OFF OPERATION

Pushing the pad from one position to the other will toggle the light, i.e. when the light is off, pushing the pad will turn on the light, vice versa.



Push pad to turn on / off

Push

Push

Toggle the light on / off

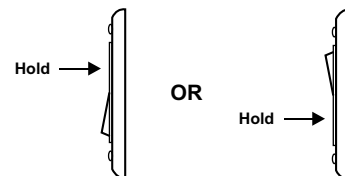
## 5. BRIGHTNESS CONTROL OPERATION

Besides turning on and off the light, you may also control the brightness of the light if the receiver module and the light bulb is dimmable, i.e. either incandescent light and designated dimming compact fluorescent light.

To change the brightness, first turn on the light by pushing the pad.

Press and hold the pad after the light is on will change the brightness of the light. Hold onto the button until the desired brightness is reached, then release the pad.

Press and hold the pad again to alter the brightness (from dim to brighten, and from brighten to dim), until the desired brightness is reached, then release the pad.



Hold

OR

Hold

Brightness Control

## 6. ERASING TB SERIES TRANSMITTERS

### Erasing TB series transmitters from the Dimmable Receiver Module model MD-318 or On / Off Receiver Module model MR-318

You may erase a transmitter from the receiver module, but you cannot erase a specific device, you must erase all the wireless devices, then program the ones you want to keep. Follow the instructions below to erase programmed transmitters.

1. Power off the lighting receiver module.
2. Press the SET button on the transmitter.
3. Press and hold the programmed pad on the transmitter for at least 2 seconds. Do not release it until step 5.
4. Power up the lighting receiver module, you will hear beeping and the light will be on.
5. You may release the pad on the transmitter.
6. When the pad is release, the light connected to the receiver module should be off, indicating you have successfully erased all the devices from the lighting receiver.

### Erasing TB series transmitters from other receivers

If you would like to erase TB series transmitter from other receiver modules, such as WR-318, WE-318, PA-318, PR-318, LS-318 etc., Please refer to the user's instructions of that receiver module.

## 7. BATTERY

When the operating range is reduced, or when the red LED does not flash during operation, it is time to replace the battery. Follow the same procedure as installing the battery in section 2 of this manual to replace the battery.

Note: Dispose of old batteries promptly and properly.

## 8. FCC

The Remote Control is approved by the FCC and it complies with Part 15 of the FCC Rules. Its operation is subject to the following two conditions :

1. This device may not cause harmful interference.
2. This device must accept any interference that may cause undesired operation.

### WARNING:

Changes or modifications to this unit not expressly approved by the party responsible of compliance could void the user's authority to operate the equipment.

## 9. CUSTOMER SERVICE

If you would like to order Skylink's products or have difficulty getting them to work or download latest information and user manual, please :

1. visit our FAQ section at [www.skylinkhome.com](http://www.skylinkhome.com), or
  2. email us at [support@skylinkhome.com](mailto:support@skylinkhome.com), or
  3. call our toll free at 1-800-304-1187 from Monday to Friday, 9 am to 5 pm EST.
- Fax (800) 286-1320

## 10. ACCESSORIES

The SkylinkHome™ Lighting System consists of many other devices from multiple button transmitters, Motion Sensor, various receivers such as Wall Switch Receiver, Plug-in Receiver with Repeater, Outdoor Receiver, Dimmer Module etc. Please visit Skylink website at [www.skylinkhome.com](http://www.skylinkhome.com) for more information.



### CUSTOMER SERVICE

17 Sheard Avenue, Brampton, Ontario, Canada L6Y 1J3  
Email: [support@skylinkhome.com](mailto:support@skylinkhome.com)  
<http://www.skylinkhome.com>  
P/N. 101A396  
Patent Pending  
©2010 SKYLINK GROUP