

# On/Off Receiver Module

Model MR-318

## 1. INTRODUCTION

Thank you for your purchase of a SkylinkHome™ lighting receiver, On/Off Receiver Module Model MR-318. This On/Off Receiver Module allows you to wirelessly turn on and off different lighting fixtures with the SkylinkHome™ lighting transmitters.

The On/Off Receiver Module MR-318 can communicate with up to 8 transmitters, so user has the option to add more transmitters to the system, such as more remote controls, or motion sensors etc.

All wireless signal communications within the SkylinkHome™ lighting system are based on rolling code technology to ensure highest security is used.

The following items are included in this package:

- On/Off Receiver Module
- Screws and Accessories



On/Off Receiver Module



Screws and Accessories

### CAUTION

Installation is required and enclosed instructions must be followed carefully to all steps and notes. If you are uncertain or uncomfortable performing this installation, please consult a qualified electrician. This manual should also be retained for future reference.

## 2. INSTALLATION

1. Turn off power to the circuit at the circuit breaker of the lighting fixture that you plan on installing the On/Off Receiver Module to. Remove the lighting fixture so the Live and Neutral wires are exposed.

### WARNING:

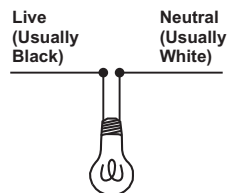
Failure to turn off power at the circuit breaker can result in electrical shock causing severe or fatal injury.

Note: Lighting Load

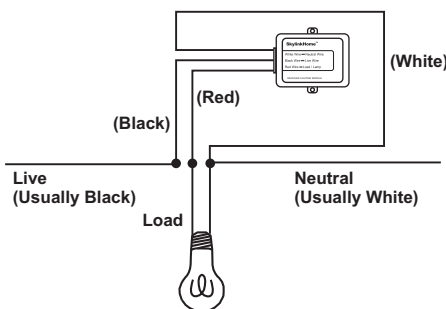
The On/Off Receiver Module is designed to operate maximum load of 900W at 120VAC. Do not connect loading that exceeds this maximum rating.

2. Follow the diagrams below to install the On/Off Receiver Module with the 3 wires: Neutral, Live and Load. Use the provided screws to secure the On/Off Receiver Module.
3. After all the wires are connected, ensure that all of the wire connectors are attached securely and there should be no exposed copper wiring. Straighten the antenna.

### Before Installation



### After Installation



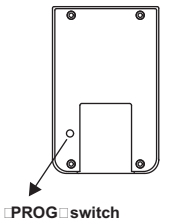
4. Secure the MR-318 to a flat surface by 2 screws or you may place it inside the lighting fixture. Install the lighting fixture back to the original configuration.
5. Turn the circuit breaker back on and turn on the wall switch that is used to operate this lighting fixture.
6. The light will be on and you should hear a single beep. The On/Off Receiver Module is installed properly and you can begin programming transmitters to the On/Off Receiver Module.

## 3. PROGRAMMING TRANSMITTERS

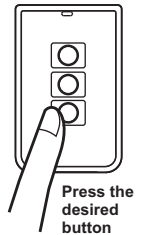
In order to operate the On/Off Receiver Module remotely with a transmitter, it must be programmed to the On/Off Receiver Module. Each On/Off Receiver Module can be operated by up to 16 different transmitters (or 16 different command signals).

To program a transmitter into the On/Off Receiver Module, follow the instructions below.

1. The On/Off Receiver Module should be power off initially. This can be done by switching off the wall switch or circuit breaker of the lighting fixture.
2. Power on the On/Off Receiver Module by switching on the wall switch or circuit breaker. You will hear beeping from the On/Off Receiver Module and the light connected to the module should be on. The beeping indicates the On/Off Receiver Module is now in programming mode and it will stay in this mode for 20 seconds.
3. Press the PROG button on the back of the transmitter with a sharp object.
4. Press the button on the transmitter that you would like to program into the On/Off Receiver Module.
5. Once the transmitter is programmed, the light will be off, indicating you have successfully programmed the transmitter to the On/Off Receiver Module.
6. You may operate the light with the programmed transmitter.



PROG button



Press the desired button

Note: To program other transmitters/sensors (besides TC transmitter), please refer to the instructions of the transmitters/sensors.

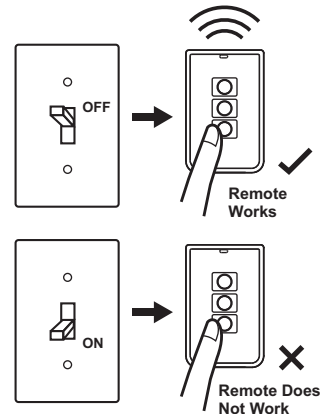
You may follow the same instructions to program additional transmitters or sensors to operate the On/Off Receiver Module.

## 4. ON / OFF OPERATION

The MR-318 On/Off Receiver Module allows on / off operation, when the programmed button is activate, it will transmit a signal to toggle its current status. For example, if a signal is received when the light is off, that signal will turn on the light.

### Note:

If the On/Off Receiver Module is installed on a ceiling lighting fixture, you can use the transmitter to operate the light remotely only if the wall switch is in the ON position. If the wall switch is off, no power is provided to the On/Off Receiver Module and therefore, it cannot operate the light.



In case the transmitter is misplaced, you can still operate the lighting fixture with the wall switch normally.

### Note:

When used with Compact Fluorescent Light, if there is flickering when you switch off the light, it is recommended you replace a different Compact Fluorescent Light with higher quality.

On / Off Operation - Original Wall Switch

Power On - Light On

There is a function "Power On - Light On" built-in to the receiver module. This means when the power supply to the receiver module change from off to on, this will turn the light on. This function allows you to operate the light with original wall switch.

When the wall switch is in the off position, switching it on will turn on the light. Once the switch is on, you may use the remote control to operate the light.

If the wall switch is switched from on to off, the light will be off. At the same time, the remote control cannot operate the light cause there is no power supplied to the receiver module.

#### 4. ON / OFF OPERATION (CONT)

In case you do not want to operate the light with the original wall switch, you can disable this Power On - Light On feature and use only remote control to operate the light. One incident that the light may be turned on by accident is after a power failure. If you leave the wall switch on, but turn off the light with a remote control. When power comes back on, the light will be on. Therefore, there is an option not to turn the lights on when power is supplied to the receiver module. The way to disable this feature is to re-program a transmitter (button) that is already programmed to the receiver module (i.e. program a transmitter twice). This will disable this feature. You may re-program it again to toggle the setting between enabling and disabling this feature.

If the Power On - Light On feature is disabled, the light will not be turned on under most circumstances, i.e. power comes back up after power failure, or manually turning on the wall switch. However, you can still turn on the light by the wall switch with a specific power up sequence, that is to turn on the wall switch twice within 2 seconds. So in case the remote control is lost, the light can still be turned on.

#### 5. ZONE OPERATION (AVAILABLE WITH 10-BUTTON / 14-BUTTON DELUXE TRANSMITTER ONLY)

A Zone Command allows you to operate multiple lights at the same time in the same zone. For instance, you may assign zone 1 to the 3 lighting fixtures in the family room (each light has its own receiver module). To set this up, refer to the Deluxe Transmitter user's instructions.

##### Programming Zone Command

To activate the zone command, simply press Zone On or Zone Off, then the zone number, i.e. [Zone On] + [1] means Zone 1 On.

Enter [Zone On] + [Zone Number] during step 4 of the programming sequence Section 3, the Zone Command signal would be programmed. Repeat this step for all the receiver modules in the same zone.

#### 6. ERASING TC TRANSMITTERS FROM THE ON/OFF RECEIVER MODULE

You may erase a TC transmitter from the On/Off Receiver Module, but you cannot erase a specific device, you must erase all the wireless devices, then program the ones you want to keep. Follow the instructions below to erase programmed TC transmitters.

1. Power off the lighting receiver. (Switch off the wall switch)
2. Press the PROG button on the back of the TC transmitter.
3. Press and hold the programmed button on the TC transmitter for at least 2 seconds. Do not release this button until step 5.
4. Power up the lighting receiver (Switch off the wall switch), you will hear beeping and the light will be on.
5. You may release the button on the transmitter.
6. When the button is release, the light attached to the On/Off Receiver Module should be off, indicating you have successfully erased all the devices from the lighting receiver.

To erase other transmitters or sensors, please refer to the instructions of the transmitters / sensors.

#### 7. TECHNICAL SPECIFICATIONS

Input Voltage: 120VAC, 60Hz  
Maximum Load: 600W at 120AVC  
Operating Frequency: 318MHz  
Wiring: Neutral, Live, Load (18 AWG)

#### 8. FCC

The Remote Control is approved by the FCC and it complies with Part 15 of the FCC Rules. Its operation is subject to the following two conditions :  
1. This device may not cause harmful interference.  
2. This device must accept any interference that may cause undesired operation.

##### WARNING:

Changes or modifications to this unit not expressly approved by the party responsible of compliance could void the user's authority to operate the equipment.

#### 9. CUSTOMER SERVICE

If you would like to order Skylink's products or have difficulty getting them to work or download latest information and user manual, please :

1. visit our FAQ section at [www.skylinkhome.com](http://www.skylinkhome.com), or
2. email us at [support@skylinkhome.com](mailto:support@skylinkhome.com), or
3. call our toll free at 1-800-304-1187 from Monday to Friday, 9 am to 5 pm EST.  
Fax (800) 286-1320

#### 10. ACCESSORIES

The SkylinkHome™ Lighting System consists of many other devices from multiple button transmitters, Motion Sensor, various receivers such as Wall Switch Receiver, Plug-in Receiver with Repeater, Outdoor Receiver, Dimmer Module etc. Please visit Skylink website at [www.skylinkhome.com](http://www.skylinkhome.com) for more information.



##### CUSTOMER SERVICE

17 Sheard Avenue, Brampton, Ontario, Canada L6Y 1J3  
Email: [support@skylinkhome.com](mailto:support@skylinkhome.com)  
<http://www.skylinkhome.com>  
P/N. 1012698  
Patent Pending  
©2010 SKYLINK GROUP