

Dimmable Receiver Module

Model MD-318

1. INTRODUCTION

Thank you for your purchase of a SkylinkHome™ lighting receiver, Dimmable Receiver Module Model MD-318. This Dimmable Receiver Module allows you to wirelessly turn on and off, dim and brighten different lighting fixtures with the SkylinkHome™ lighting transmitters.

The Dimmable Receiver Module MD-318 can communicate with up to 8 transmitters, so user has the option to add more transmitters to the system, such as more remote controls, or motion sensors etc.

All wireless signal communications within the SkylinkHome™ lighting system are based on rolling code technology to ensure highest security is used.

The following items are included in this package:

- Dimmable Receiver Module
- Screws and Accessories



Dimmable Receiver Module



Screws and Accessories

CAUTION

Installation is required and enclosed instructions must be followed carefully to all steps and notes. If you are uncertain or uncomfortable performing this installation, please consult a qualified electrician. This manual should also be retained for future reference.

2. INSTALLATION

1. Turn off power to the circuit at the circuit breaker of the lighting fixture that you plan on installing the Dimmable Receiver Module to. Remove the lighting fixture so the Live and Neutral wires are exposed.

WARNING:

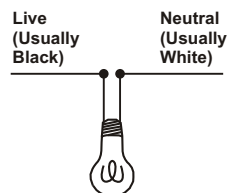
Failure to turn off power at the circuit breaker can result in electrical shock causing severe or fatal injury.

Note: Lighting Load

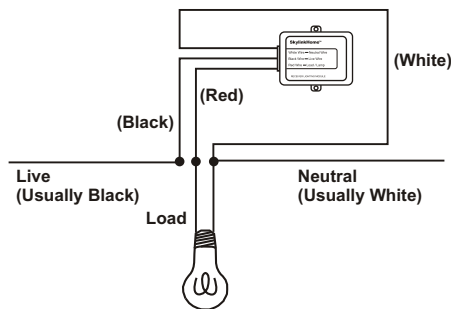
The Dimmable Receiver Module is designed to operate maximum load of 300W at 120VAC. Do not connect loading that exceeds this maximum rating.

2. Follow the diagrams below to install the Dimmable Receiver Module with the 3 wires: Neutral, Live and Load. Use the provided screws to secure the Dimmable Receiver Module.
3. After all the wires are connected, ensure that all of the wire connectors are attached securely and there should be no exposed copper wiring. Straighten the antenna.

Before Installation



After Installation



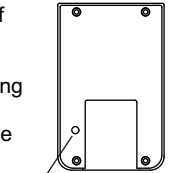
4. Secure the MD-318 to a flat surface by 2 screws or you may place it inside the lighting fixture. Install the lighting fixture back to the original configuration.
5. Turn the circuit breaker back on and turn on the wall switch that is used to operate this lighting fixture.
6. The light will be on and you should hear a single beep. The Dimmable Receiver Module is installed properly and you can begin programming transmitters to the Dimmable Receiver Module.

3. PROGRAMMING TRANSMITTERS

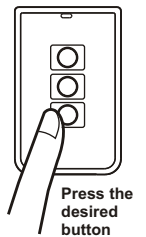
In order to operate the Dimmable Receiver Module remotely with a transmitter, it must be programmed to the Dimmable Receiver Module. Each Dimmable Receiver Module can be operated by up to 16 different transmitters (or 16 different command signals).

To program a transmitter into the Dimmable Receiver Module, follow the instructions below.

1. The Dimmable Receiver Module should be power off initially. This can be done by switching off the wall switch or circuit breaker of the lighting fixture.
2. Power on the Dimmable Receiver Module by switching on the wall switch or circuit breaker. You will hear beeping from the Dimmable Receiver Module and the light connected to the module should be on. The beeping indicates the Dimmable Receiver Module is now in programming mode and it will stay in this mode for 20 seconds.
3. Press the PROG button on the back of the transmitter with a sharp object.
4. Press the button on the transmitter that you would like to program into the Dimmable Receiver Module.
5. Once the transmitter is programmed, the light will be off, indicating you have successfully programmed the transmitter to the Dimmable Receiver Module.
6. You may operate the light with the programmed transmitter.



"PROG" switch



Press the desired button

Note: To program other transmitters/sensors (besides TC transmitter), please refer to the instructions of the transmitters/sensors.

You may follow the same instructions to program additional transmitters or sensors to operate the Dimmable Receiver Module.

4. OPERATING MODES

The Dimmable Receiver Module can control the light in 2 different operating modes.

- 1) On / Off Mode - Allows operating the light either on and off, without dimming function.
- 2) Dimming Mode - Allows operating the light in on, off and dimming (dim / brighten) modes. Light must be either incandescent light and designated dimming compact fluorescent light.

The factory default operating mode is on/off mode. However, if your light is dimmable, you may change the operating mode to Dimming Mode. To change the operating modes, please follow the instructions below.

1. Turn on the light by activating the programmed transmitter.
2. Press and hold onto a button on the transmitter that is programmed to the module for 10 seconds.
3. The light will flash. If it flashes once, that means it is in On / Off Mode. If the light flashes twice, that means it is in Dimming Mode.
4. Repeating step 3 above will toggle the setting between On / Off Mode and Dimming Mode.

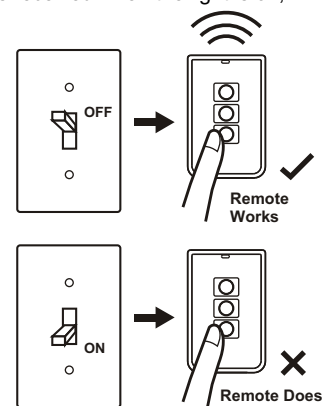
5. ON / OFF OPERATION

The MD-318 Dimmable Receiver Module allows on / off operation, when the programmed button is activate, it will transmit a signal to toggle its current status. For example, if a signal is received when the light is off, that signal will turn on the light.

Note:

If the Dimmable Receiver Module is installed on a ceiling lighting fixture, you can use the transmitter to operate the light remotely only if the wall switch is in the ON position. If the wall switch is off, no power is provided to the Dimmable Receiver Module and therefore, it cannot operate the light.

In case the transmitter is misplaced, you can still operate the lighting fixture with the wall switch normally.



5. ON / OFF OPERATION (CONT)

Note:

When used with Compact Fluorescent Light, if there is flickering when you switch off the light, it is recommended you replace a different Compact Fluorescent Light with higher quality.

On / Off Operation - Original Wall Switch

Power On - Light On

There is a function "Power On - Light On" built-in to the receiver module. This means when the power supply to the receiver module change from off to on, this will turn the light on. This function allows you to operate the light with original wall switch.

When the wall switch is in the off position, switching it on will turn on the light. Once the switch is on, you may use the remote control to operate the light.

If the wall switch is switched from on to off, the light will be off. At the same time, the remote control cannot operate the light cause there is no power supplied to the receiver module.

In case you do not want to operate the light with the original wall switch, you can disable this Power On - Light On feature and use only remote control to operate the light. One incident that the light may be turned on by accident is after a power failure. If you leave the wall switch on, but turn off the light with a remote control. When power comes back on, the light will be on. Therefore, there is an option not to turn the lights on when power is supplied to the receiver module. The way to disable this feature is to re-program a transmitter (button) that is already programmed to the receiver module (i.e. program a transmitter twice). This will disable this feature. You may re-program it again to toggle the setting between enabling and disabling this feature.

If the Power On - Light On feature is disabled, the light will not be turned on under most circumstances, i.e. power comes back up after power failure, or manually turning on the wall switch. However, you can still turn on the light by the wall switch with a specific power up sequence, that is to turn on the wall switch twice within 2 seconds. So in case the remote control is lost, the light can still be turned on.

6. BRIGHTNESS CONTROL OPERATION

Besides turning on and off the light, you may also control the brightness of the light if the light bulb is dimmable, i.e. either incandescent light and designated dimming compact fluorescent light.

To change the brightness, first turn on the light.

Press and hold the programmed button on the transmitter will change its brightness. Hold onto the button until the desired brightness is reached, then release the button.

Press and hold the same button again on the transmitter to change the brightness again in the opposite way (i.e. Dim to brighten or brighten to dim), until the desired brightness is reached, then release the button.

7. ZONE OPERATION

Zone Operation On / Off (with the TC Series Deluxe Transmitter)

A Zone Command allows you to operate multiple lights at the same time in the same zone. You may turn On or Off a zone.

A zone command must first be programmed to the Dimmable Receiver Module. Follow the programming instructions in Section 3 of the manual and program the zone command under On / Off Mode. For example, if you would like to assign the Dimmable Receiver Module to be one of the devices in zone 1, you should press [Zone On] and [1] during step 5B under pro-gramming instruction Section 3. So the Zone 1 signal is programmed to the Dimmable Receiver Module.

To activate the zone command, simply press "Zone On" or "Zone Off", then the zone number.

8. ZONE OPERATION (CONT)

Pressing [Zone On] then [1] will turn on all lights in zone 1.

Pressing [Zone Off] then [3] will turn off all lights in zone 3.

Zone Operation Brightness Control

You can also change the brightness of all the lights in that zone, if the receiver modules and lights connected are dimmable.

[Zone On] represents increase in brightness level, i.e. Brightening
[Zone Off] represents decrease in brightness level, i.e. Dimming

Press [Zone On] then hold [1] will brighten all lights in zone 1, release the button at the desired brightness level or it will stop until they are at the maximum brightness.

Press [Zone Off] then hold [1] will dim all lights in zone 1, release the button at the desired brightness level or it will stop until they are at the minimum brightness.

9. ERASING TC TRANSMITTERS FROM THE DIMMABLE RECEIVER MODULE

You may erase a TC transmitter from the Dimmable Receiver Module, but you cannot erase a specific device, you must erase all the wireless devices, then program the ones you want to keep. Follow the instructions below to erase programmed TC transmitters.

1. Power off the lighting receiver. (Switch off the wall switch)
2. Press the PROG button on the back of the TC transmitter.
3. Press and hold the programmed button on the TC transmitter for at least 2 seconds. Do not release this button until step 5.
4. Power up the lighting receiver (Switch off the wall switch), you will hear beeping and the light will be on.
5. You may release the button on the transmitter.
6. When the button is release, the light attached to the Dimmable Receiver Module should be off, indicating you have successfully erased all the devices from the lighting receiver.

To erase other transmitters or sensors, please refer to the instructions of the transmitters / sensors.

10. TECHNICAL SPECIFICATIONS

Input Voltage: 120VAC, 60Hz
Maximum Load: 300W at 120AVC
Operating Frequency: 318MHz
Wiring: Neutral, Live, Load (18 AWG)

11. FCC

The Remote Control is approved by the FCC and it complies with Part 15 of the FCC Rules. Its operation is subject to the following two conditions :

1. This device may not cause harmful interference.
2. This device must accept any interference that may cause undesired operation.

WARNING:

Changes or modifications to this unit not expressly approved by the party responsible of compliance could void the user's authority to operate the equipment.

12. CUSTOMER SERVICE

If you would like to order Skylink's products or have difficulty getting them to work or download latest information and user manual, please :

1. visit our FAQ section at www.skylinkhome.com, or
2. email us at support@skylinkhome.com, or
3. call our toll free at 1-800-304-1187 from Monday to Friday, 9 am to 5 pm EST. Fax (800) 286-1320

13. ACCESSORIES

The SkylinkHome™ Lighting System consists of many other devices from multiple button transmitters, Motion Sensor, various receivers such as Wall Switch Receiver, Plug-in Receiver with Repeater, Outdoor Receiver, Dimmer Module etc. Please visit Skylink website at www.skylinkhome.com for more information.



CUSTOMER SERVICE

17 Sheard Avenue, Brampton, Ontario, Canada L6Y 1J3

Email: support@skylinkhome.com

<http://www.skylinkhome.com>

P/N. 101Z699

Patent Pending

©2010 SKYLINK GROUP