

Motion Sensor

Model ID-318

1. INTRODUCTION

Thank you for your purchase of a SkylinkHome™ Lighting Automation, Motion Sensor, Model ID-318. The Motion Sensor allows you to turn lights on automatically when movement is detected. A built-in timer can turn lights off after a predefined time period. This is ideal for energy saving purposes where the area is not always occupied but lighting is needed when someone is present. A built-in light sensor can also be used so the light will not be on if movement is detected when the monitored area is bright enough.

You can customize several settings on the motion sensor, such as:

- Timer duration (5 minutes, 30 minutes, 60 minutes)
- Light sensor enable / disable (CDS light sensor)
- Light sensor brightness threshold (Hi / Lo)
- Motion Sensor Sensitivity

All wireless signal communications within the SkylinkHome™ lighting system are based on rolling code technology to ensure highest security is used.

The following items are included in this package:

- Motion Sensor
- Ball Joint and Mounting Accessories
- 9V Alkaline Battery
- User's Instructions



Motion Sensor



Ball Joint and Mounting Accessories



9V Alkaline Battery

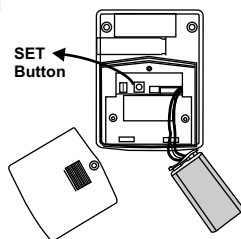
Before you can control the lights with the Motion Sensor, you need to program it to the receiver module. Follow the instructions below to program the Motion Sensor to the receiver module.

2. PROGRAMMING MOTION SENSOR TO RECEIVER MODULE

In order to activate the receiver module with a Motion Sensor, it must be programmed to the receiver module.

To program a motion sensor into the receiver module, follow the instructions below.

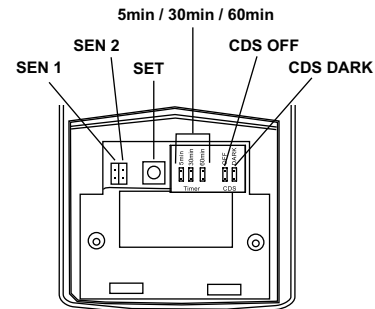
1. Undo the screws on the back of the motion sensor and remove the battery compartment door.
2. Insert a 9V alkaline battery to power up the motion sensor.
3. Put the receiver module that you plan to program into programming mode. Refer to the User's Instructions of that receiver module. If you are programming the motion sensor to any one of these receiver modules, Model PA-318, PR-318, LS-318, WE-318, WR-318, ensure you program the motion sensor under "Timer Operation" learning sequence of the receiver module. You cannot program the motion sensor to these receiver modules under On / Off operating mode. If you program the motion sensor under Flashing operating mode, when movement is detected, the light will flash for the predefined time period. Please choose carefully on which operating mode you select during programming.
4. Once the receiver module is in programming mode, you may transmit the programming signal from the motion sensor by pressing the "SET" button inside the battery door. When the "SET" button is pressed, the red LED on the front of the motion sensor will flash, indicating a signal is being transmitted to the receiver module.
5. Once the motion sensor is programmed, the receiver module will quit from programming mode. Programming is now completed.



You may follow the same instructions to program the motion sensor to different receiver modules, so when the motion sensor is activated, all the receiver modules will be activated.

3. CUSTOMIZING THE MOTION SENSOR

There are settings on the motion sensor that you can customize. To customize these settings, open up the battery compartment door and there are a few jumper connectors. Refer to the detail explanations below to customize the motion sensor to suit your needs.



SEN 1, SEN 2 - This is the sensitivity setting of the motion sensor, where SEN 1 represents high sensitivity and SEN2 represents low sensitivity. High sensitivity can monitor further movement, from up to about 11 meters and less movement is required for activation. Low sensitivity can monitor movement within a shorter distance and more movement is required.

SET Button - The SET Button is used for programming the Motion Sensor to the lighting receiver module.

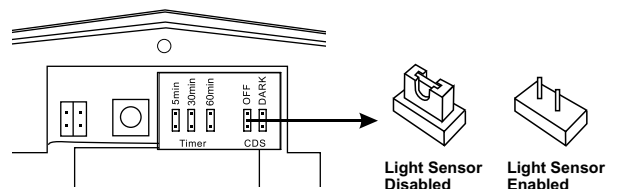
5 min / 30 min / 60 min - This connector allows you to select the timer duration, i.e. how long the light will be on after a motion is detected. You may set the connector at the 5 min position so the light will be on when a motion is detected and off 5 minutes later.

You may also remove the connector completely from all 3 settings, i.e. no jumper connector on 5 / 30 / 60 minute. If you remove all 3 connectors, the light will be on when motion is detected and it will not be off by the built-in timer. You must use other device such as a remote control to turn it off. There are some applications where it is desired, such as motion sensor installed in a conference room, it should turn on the lighting when someone walks into the room, but it should remain on until someone leaves the room and turn off the lighting manually. Please refer to "Accessories" section of the instructions for selection of different devices.

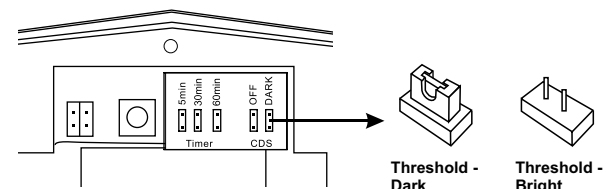
If you are programming the motion sensor to any one of these receiver modules, Model PA-318, PR-318, LS-318, WE-318, WR-318, these receiver modules have their own timer duration setting. However, when the motion sensor is in used with these receiver modules, the motion sensor timer setting overrides the timer duration setting on these receiver modules. Therefore, when movement is detected by the motion sensor, the light will be on based on the motion sensor timer setting.

CDS OFF (Light Sensor) - If this connect is placed, the CDS light sensing function is off, meaning even it is very bright, if movement is detected by the motion sensor, it will still send a signal to turn on the light.

If the connector is removed, light sensor function is enabled, meaning the light will only be on if motion is detected when the brightness of the monitored area is low enough.

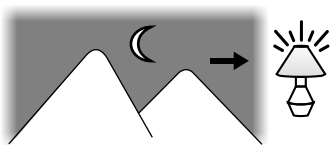


CDS DARK (Light Sensing Threshold) - This connector allows the users to set the light sensing threshold value.

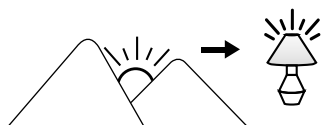


3. CUSTOMIZING THE MOTION SENSOR (CONT)

If the connector is in place, the light sensor threshold is set at a lower brightness value, i.e. a motion activation signal will not turn on the lighting receiver unless the environment is really dark.



If the connector is removed, the light sensor threshold is set at a higher brightness value, i.e. a motion activation signal will turn on the lighting receiver even the environment is not so dark.

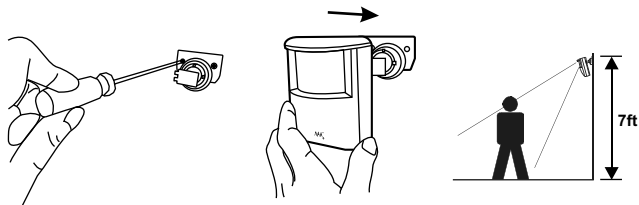


You should set the desired light sensing threshold by trial and error.

After setting all the jumper connectors, you may place the battery compartment door back on and tighten the screw. You may now mount the motion sensor at the desired location where movement will be monitored.

4. INSTALLATION

The motion sensor should be installed at a location where you want to monitor movement, so when movement is detected at this location, the light will be on. You should mount it at a height of 7ft from the ground.



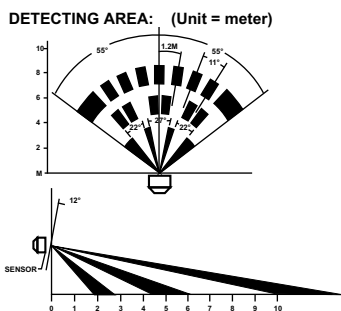
5. TESTING AND OPERATION

Walk Test

Walk test should be performed after the motion sensor is mounted. Walk in the detected area, if motion is detected, a red light inside the sensor will glow. If the red light does not glow, motion has not been detected and you may need to re-position the sensor. Ensure you walk test all the locations that you would like the motion sensor to cover.

Note:

- Perform the walk test after you have inserted the battery for more than 1 minute.
- Before performing the walk test, the sensor should not detect any motion.
- After motion is detected once, the sensor will not be triggered unless no motion is detected for 3 seconds. Therefore, wait for at least 3 seconds during walk testing between 2 activations.



Caution:

When installing the motion sensor, avoid placing it near heat or cold producing devices (i.e. A/C or furnace vents, fans, ovens, space heaters, etc). Air movement, especially caused by changes in temperature may trigger the Motion Sensor and cause false alarms. Please carefully test your Motion Sensor so that it will only be triggered by wanted movement.

After walk testing, you may power up the lighting receiver module. When motion is detected, the red LED on the front of the motion sensor will flash and the light connected to the receiver module should also be on.

If the light at the receiver module is not on, but the red LED on the motion sensor flashes, please ensure you have the correct setting of the CDS Light Sensor, i.e. if you enable CDS Light Sensor and you are testing this at a bright environment, the light connected to the motion sensor will not be on. If the CDS Light Sensor setting is correct, please ensure the motion sensor is programmed to the lighting receiver module. If you are not certain if the motion sensor is properly programmed, you can program it again.

6. ERASING MOTION SENSOR

Erasing Motion Sensor from the Dimmable Receiver Module model MD-318 or On / Off Receiver Module model MR-318

You may erase a transmitter from the receiver module, but you cannot erase a specific device, you must erase all the wireless devices, then program the ones you want to keep. Follow the instructions below to erase programmed transmitters.

1. Power off the lighting receiver module.
2. Press the SET button on the Motion Sensor.
3. Press and hold the programmed number button on the transmitter for at least 2 seconds. Do not release this button until step 5.
4. Power up the lighting receiver module, you will hear beeping and the light will be on.
5. You may release the button on the transmitter.
6. When the button is release, the light connected to the receiver module will be off, indicating you have successfully erased all the devices from the lighting receiver.

7. FCC

The Remote Control is approved by the FCC and it complies with Part 15 of the FCC Rules. Its operation is subject to the following two conditions :

1. This device may not cause harmful interference.
2. This device must accept any interference that may cause undesired operation.

WARNING:

Changes or modifications to this unit not expressly approved by the party responsible of compliance could void the user's authority to operate the equipment.

8. CUSTOMER SERVICE

If you would like to order Skylink's products or have difficulty getting them to work or download latest information and user manual, please :

1. visit our FAQ section at www.skylinkhome.com, or
2. email us at support@skylinkhome.com, or
3. call our toll free at 1-800-304-1187 from Monday to Friday, 9 am to 5 pm EST. Fax (800) 286-1320

9. ACCESSORIES

The SkylinkHome™ Lighting System consists of many other devices from multiple button transmitters, Motion Sensor, various receivers such as Wall Switch Receiver, Plug-in Receiver with Repeater, Outdoor Receiver, Dimmer Module etc. Please visit Skylink website at www.skylinkhome.com for more information.



CUSTOMER SERVICE

17 Sheard Avenue, Brampton, Ontario, Canada L6Y 1J3
Email: support@skylinkhome.com
<http://www.skylinkhome.com>
P/N. 101A396
Patent Pending
©2010 SKYLINK GROUP