

hg

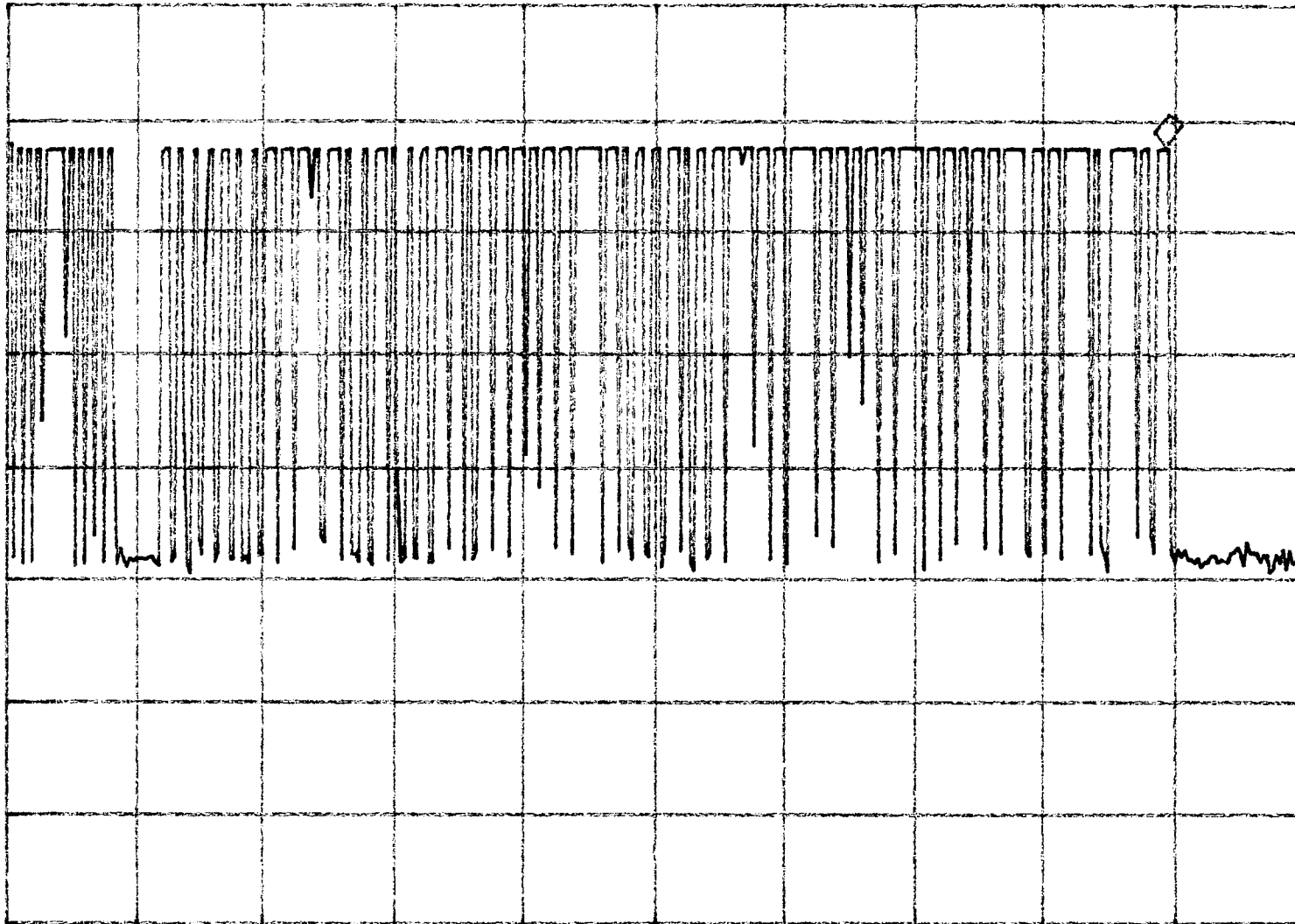
MKR 89.500 msec

REF -20.0 dBm

AT 10 dB

-32.51 dBm

PEAK
LOG
10
dB/



Worst Case:

0.4ms on; 0.4ms off	4ms off
---------------------	--------------------

X 12

0.8ms on; 0.4ms off

X 64

$$\text{Duty Cycle} = \frac{0.4 \times 12 + 0.8 \times 64}{100}$$

$$= \frac{56}{100} = 0.56$$

Average Factor = -5.0 dB

WA SB
SC VS
CORR

CENTER 314.969 MHz

SPAN 0 Hz

#RES BW 3.0 MHz

#VBW 3 MHz

#SWP 100 msec

tip

MKR 3.9750 msec ~ 4.0ms

REF -20.0 dBm

AT 10 dB

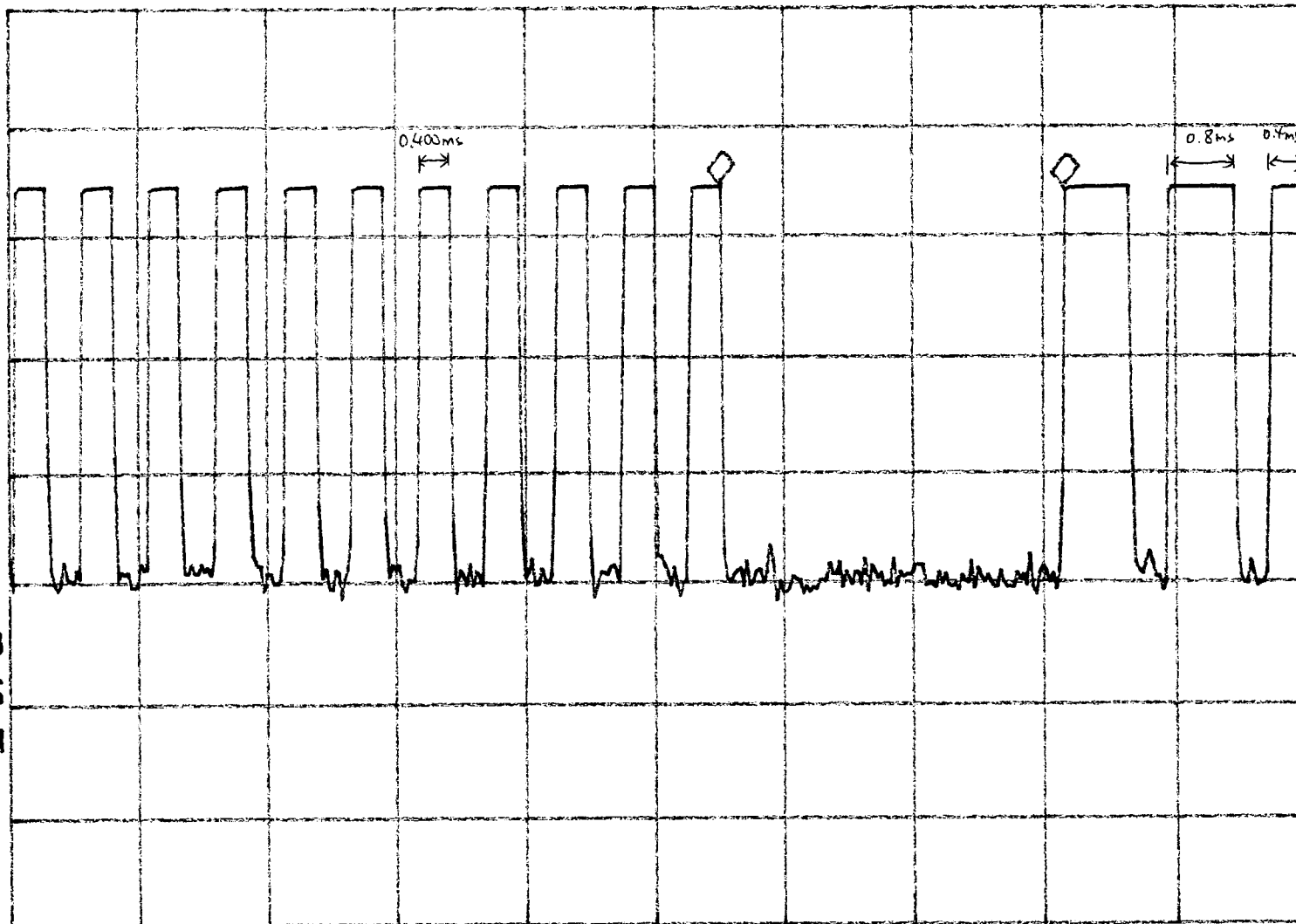
-.30 dB

PEAK

LOG

10

dB/



CENTER 314.969 MHz

SPAN 0 Hz

#RES BW 3.0 MHz

#VBW 3 MHz

#SWP 15.0 msec

47

REF -20.0 dBm

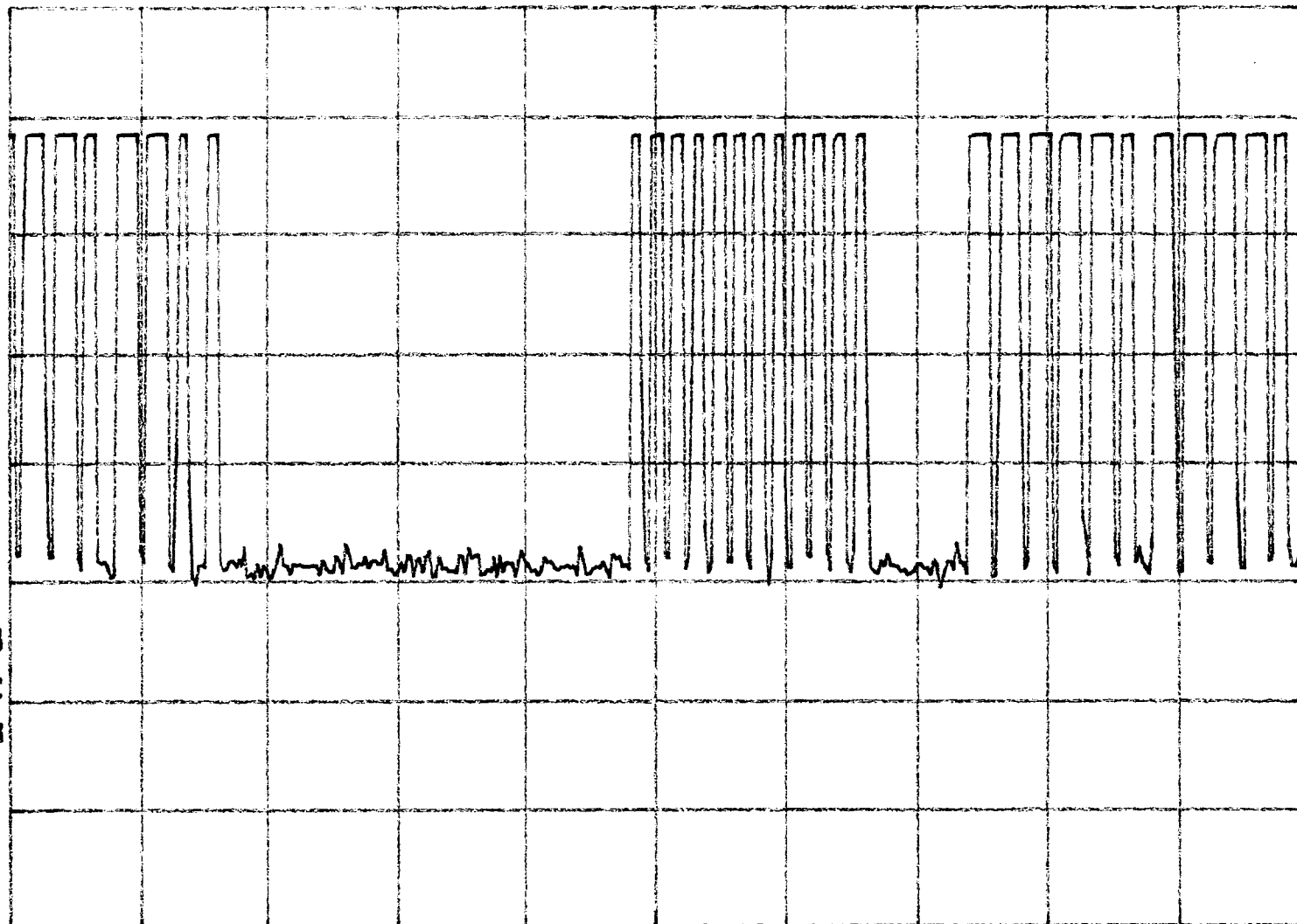
AT 10 dB

PEAK

LOG

10

dB/



VA SB

SC FC

CORR

CENTER 314.969 MHz

#RES BW 3.0 MHz

#VBW 3 MHz

SPAN 0 Hz

#SWP 50.0 msec

1/10

REF -20.0 dBm

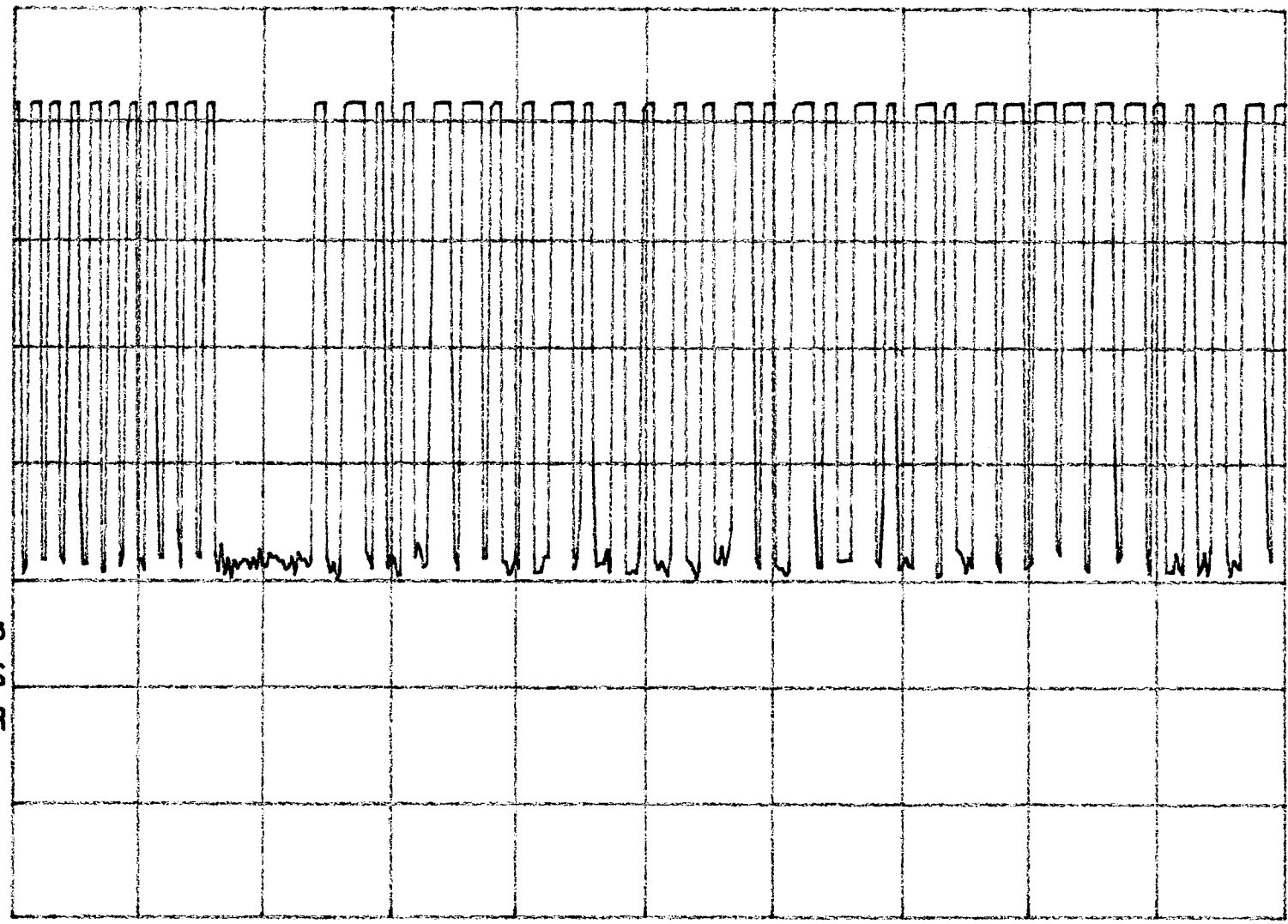
AT 10 dB

PEAK

LOG

10

dB/



WA SB

SC VS

CORR

CENTER 314.969 MHz

SPAN 0 Hz

#RES BW 3.0 MHz

#VBW 3 MHz

#SWP 50.0 msec

hp

MKR -39.250 msec

REF -20.0 dBm

AT 10 dB

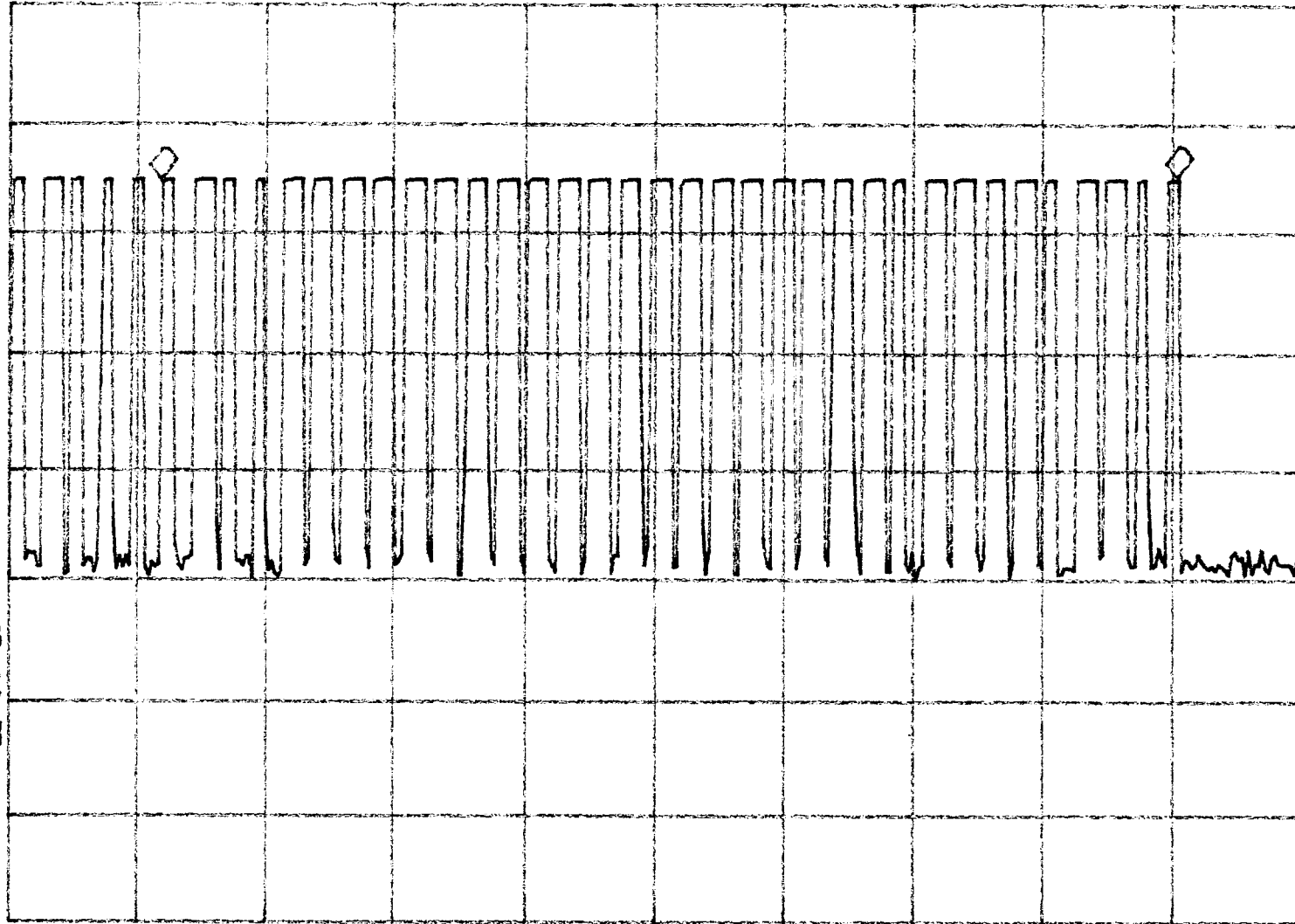
-.27 dB

PEAK

LOG

10

dB/



CENTER 314.969 MHz

SPAN 0 Hz

#RES BW 3.0 MHz

#VBW 3 MHz

#SWP 50.0 msec

tip

REF -20.0 dBm

AT 10 dB

PEAK

LOG

10

dB/



WA SB
SC VS
CORR

CENTER 314.969 MHz

#RES BW 3.0 MHz

#VBW 3 MHz

SPAN 0 Hz

#SWP 250 msec

hp

MKR 937.50 msec

REF -20.0 dBm

AT 10 dB

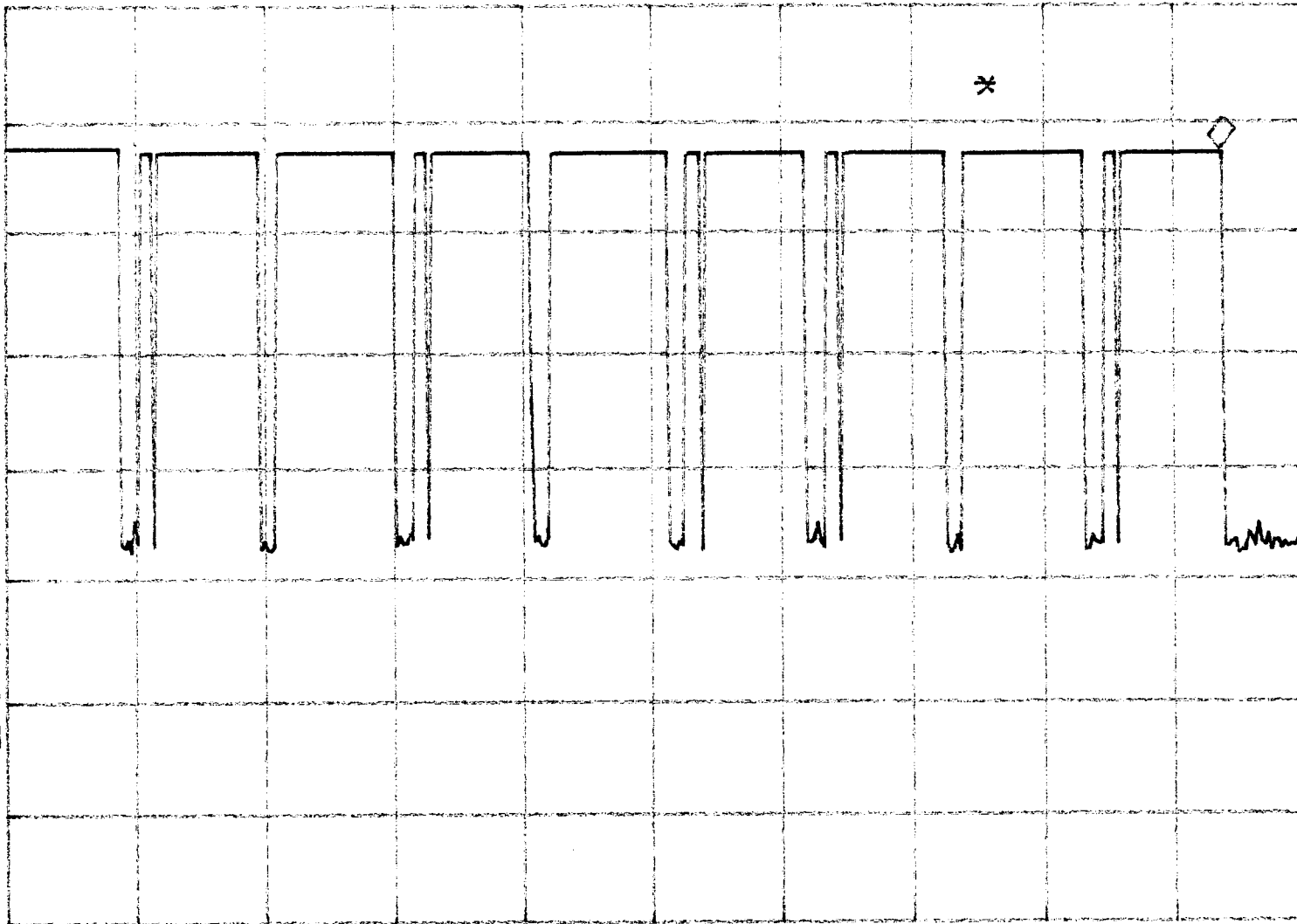
-32.64 dBm

PEAK

LOG

10

dB/



CENTER 314.969 MHz

SPAN 0 Hz

#RES BW 3.0 MHz

#VBW 3 MHz

#SWP 1.00 sec