

0522891

GS-M

hp

MKR 468 kHz

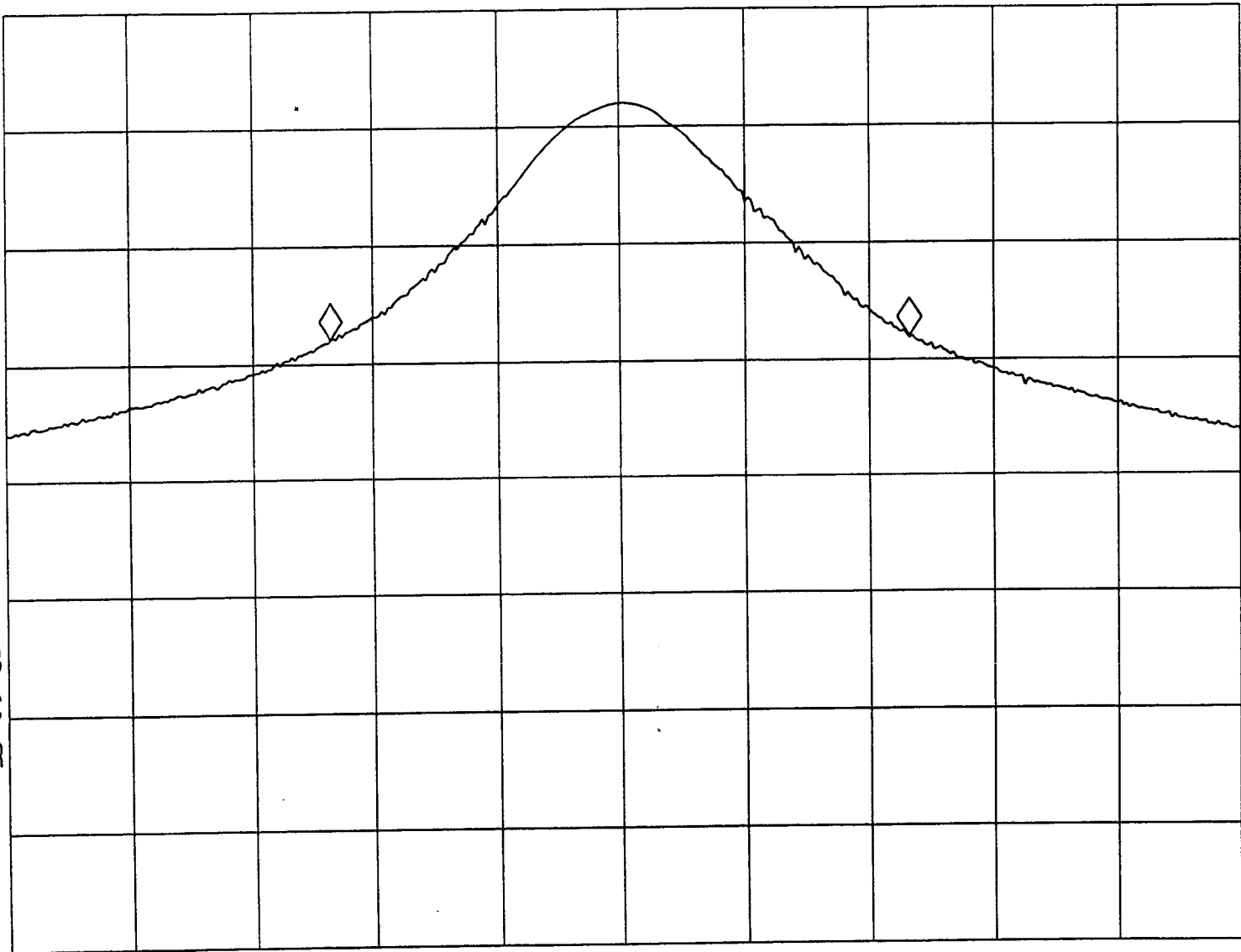
REF -10.0 dBm

#AT 0 dB

.00 dB

PEAK
LOG
10
dB/

VA SB
SC FC
CORR



CENTER 389.543 MHz

SPAN 1.000 MHz

#RES BW 100 kHz

#VBW 100 kHz

#SWP 50.0 msec

Channel A

0522491

G5-M

hp

MKR 503 KHZ

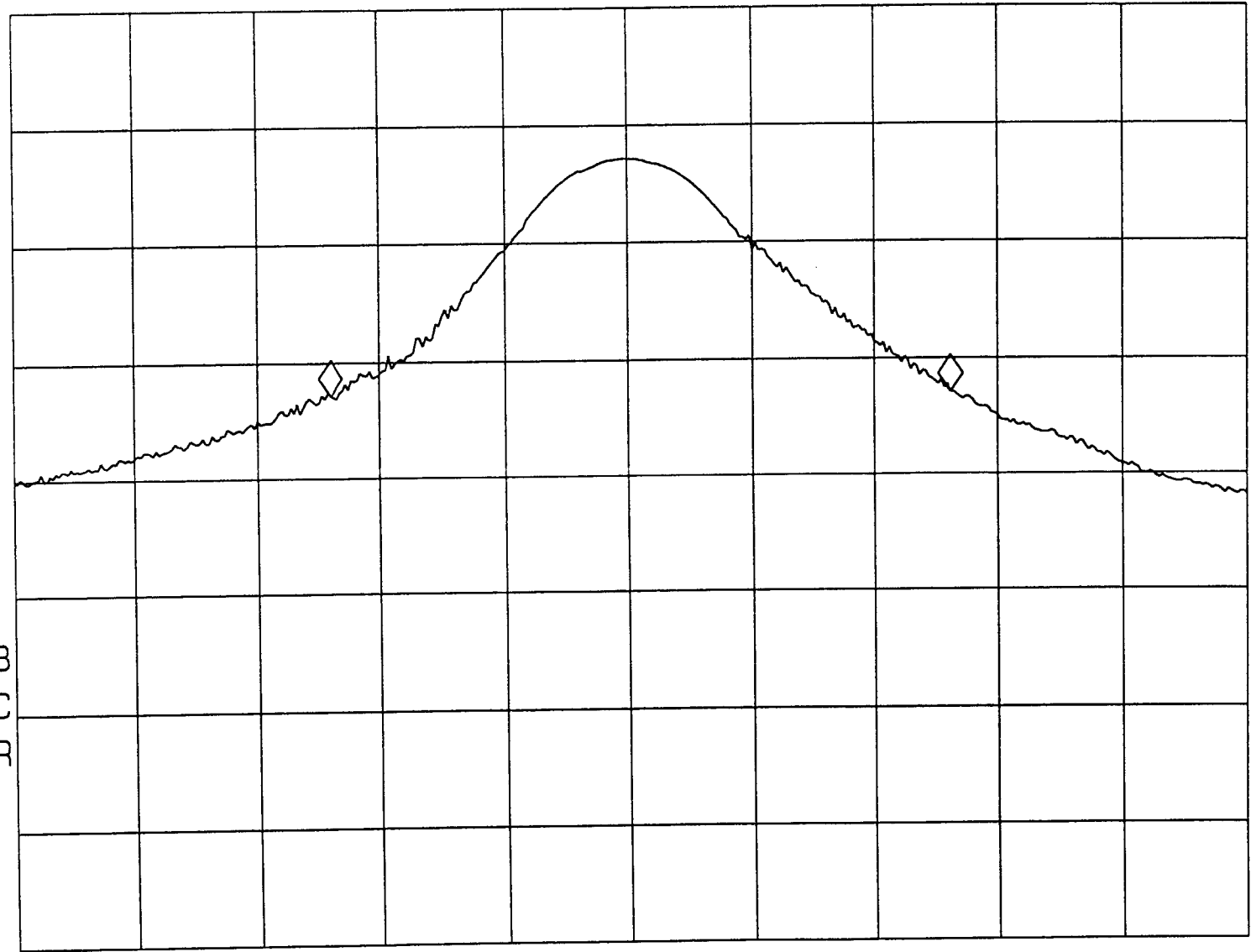
REF -10.0 dBm

#AT 0 dB

.00 dB

PEAK
LOG
10
dB/

VA SB
SC FC
CORR



Channel B

CENTER 318.093 MHz

SPAN 1.000 MHz

#RES BW 100 KHZ

#VBW 100 KHZ

#SWP 20.0 msec

0522491

GS-M

hp

MKR 515 KHz

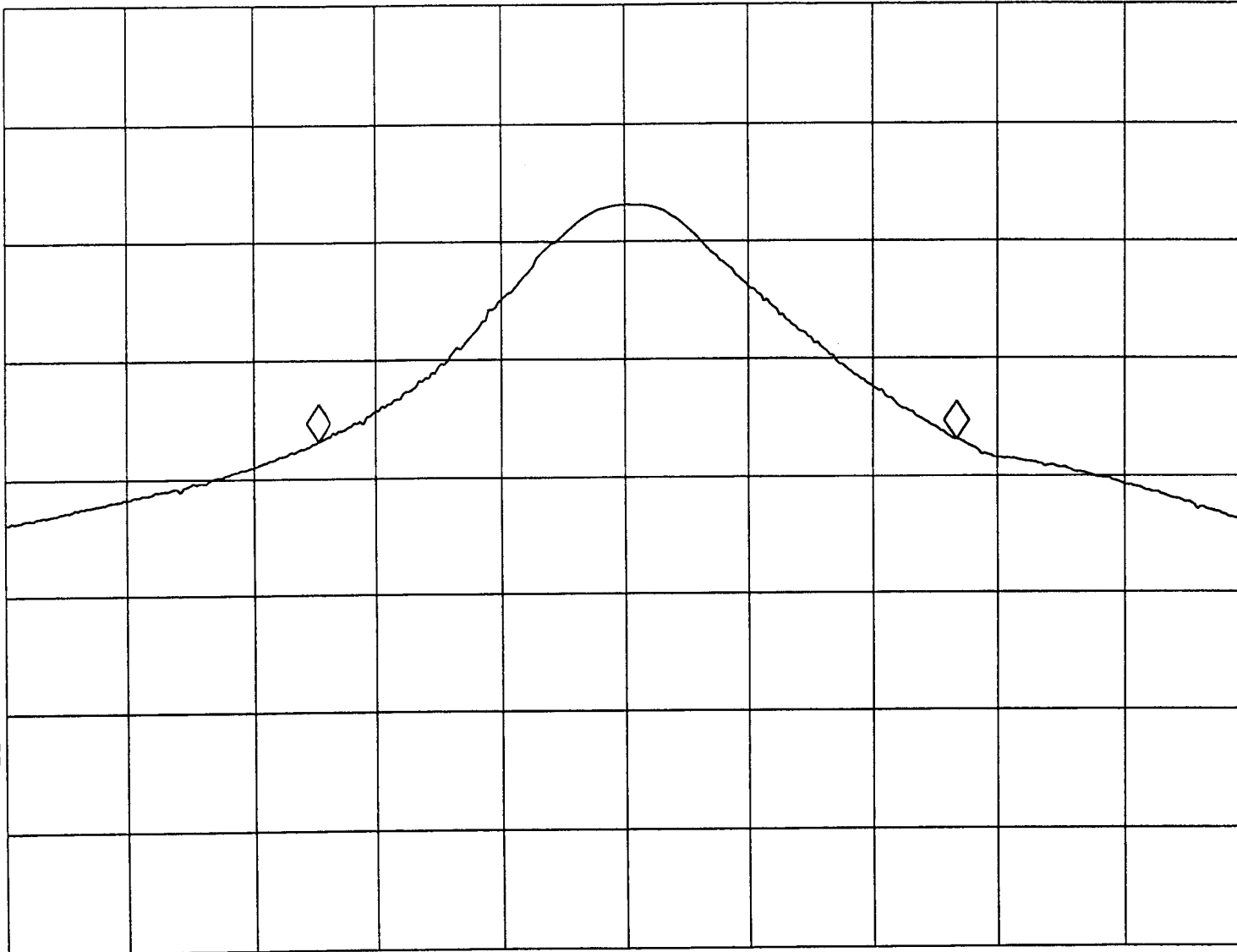
REF -10.0 dBm

#AT 0 dB

.00 dB

PEAK
LOG
10
dB/

VA SB
SC FC
CORR



CENTER 310.413 MHz

#RES BW 100 KHz

#VBW 100 KHz

SPAN 1.000 MHz

#SWP 50.0 msec

Channel C

0522491

GT-M

hp

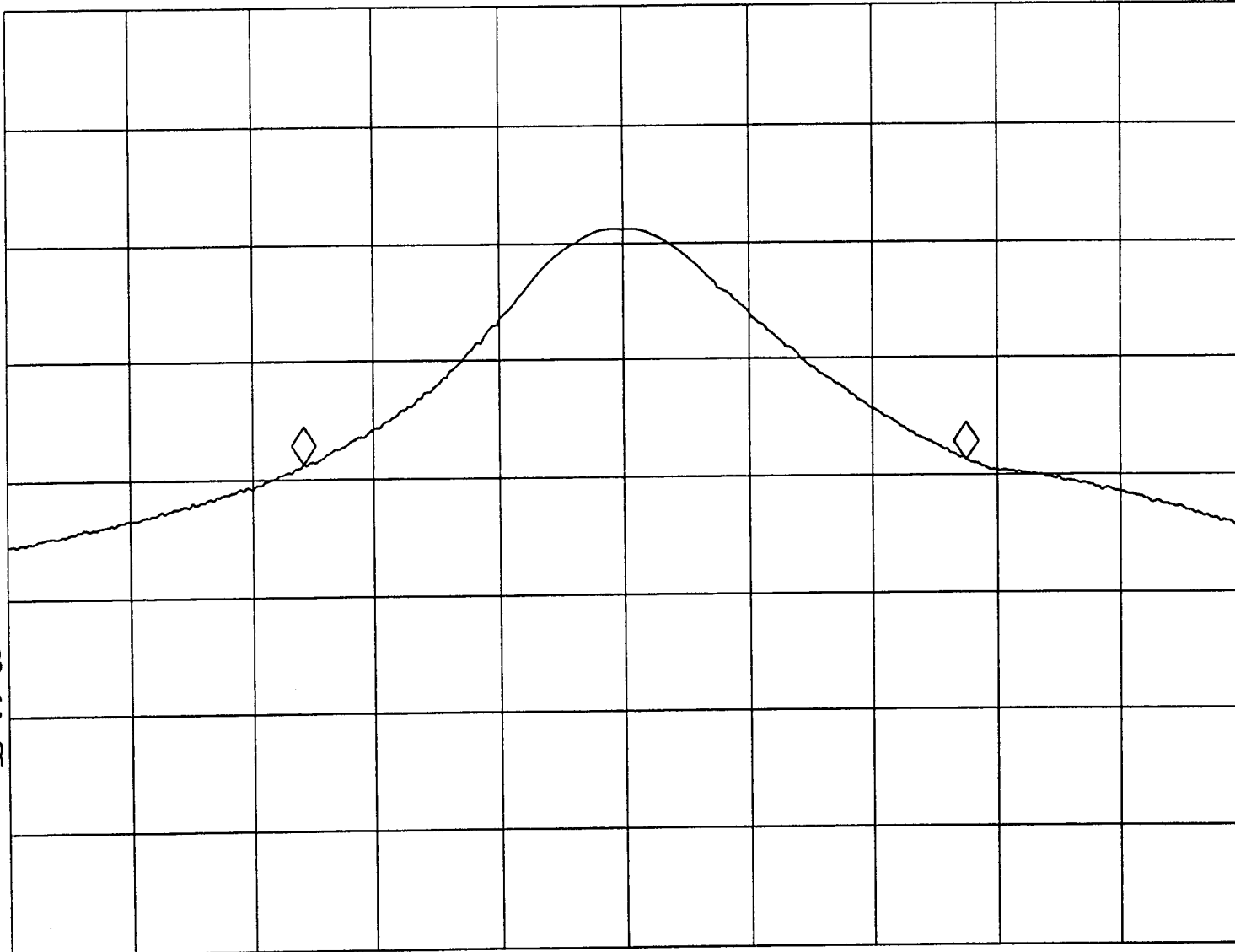
MKR 533 kHz

REF -10.0 dBm

#AT 0 dB

.00 dB

PEAK
LOG
10
dB/



CENTER 300.890 MHz

SPAN 1.000 MHz

#RES BW 100 kHz

#VBW 100 kHz

#SWP 50.0 msec

Channel D