

4-Button Remote Control

Model 4B-101,
4B-201, 4B-103,
4B-434

1. INTRODUCTION

The Remote Control allows you to operate the MA Series control panel remotely with a press of a button. You can arm the system, disarm the system and activate the alarm instantly.

In this package, you should find a remote control, with a 12V alkaline battery installed.



Remote Control



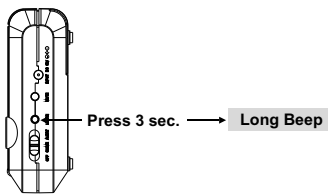
12V Lithium battery

Please follow the instructions below to program the remote control to the MA Series control panel.

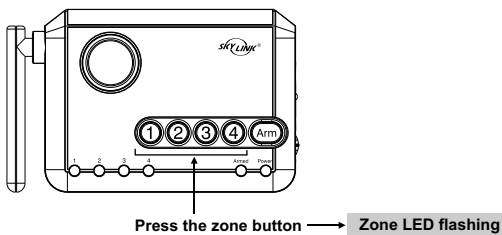
2. LEARN REMOTE CONTROL TO MA SERIES CONTROL PANEL

In order for the remote control to communicate with the control panel properly, the remote control must be programmed to the control panel. Follow the brief instructions below or refer to the detail instructions from the MA Series User's Instructions to program the remote control to the control panel.

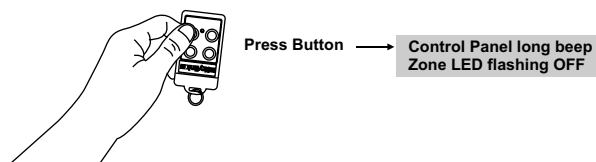
Step 1:
Press and hold the Learn Button on the Control Panel for 3 seconds. Control Panel beeps once and you may release the Learn Button.



Step 2:
Press the zone button (1, 2, 3, or 4) once, for which you want to program the remote control to. The selected Zone LED will flash.



Step 3:
Activate the Remote Control by pressing the red Panic Button.



Step 4:
You will hear a long beep and the zone LED stops flashing. The remote control is now programmed to the Control Panel.

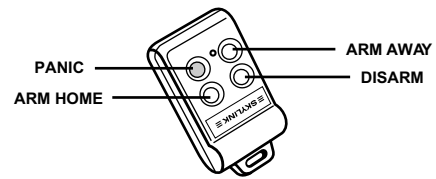
Note:

You may program 1 remote control to one zone.

If you have multiple remote controls, you need to program them into different zones. (one per zone)

3. OPERATION

The remote control can be used to arm, disarm, activate the alarm instantly.



Arm Away - Pressing the Arm Away button on the keychain remote will arm the system in Away mode, which will result in a 45-second exit delay. Arm LED will flash.

Arm Home - Pressing the Arm Home button on the keychain will arm the system in Home mode. Arm LED will be steadily on instantly.

Disarm - Pressing the disarm button on the keychain remote will disarm the system instantly. Arm LED will also be off.

Panic - Pressing the panic button will cause the siren to sound instantly.

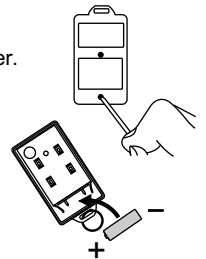
4. BATTERY REPLACEMENT

The battery of the keychain remote (Alkaline, Type 23A, 12V) needs to be replaced when either one of the followings occurs:

1. The LED on the keychain doesn't flash or on when a key is pressed;
2. The operating range starts to decrease.

To replace the battery:

1. Undo the two screws on the back of the transmitter. The bottom case will then come off.
2. Using a small screwdriver or pen, pry out the old battery from one end.
3. Place the new battery in position. A diagram in the battery compartment indicates which end is positive and which is negative.
4. Close the battery cover and reinsert two screws.



5. OTHER MA SERIES ACCESSORIES

The MA Series control panel can work with different accessories include: Motion Sensor, Door/Window Sensor, Flood Sensor, External Keypad, Audio Alarm, Emergency Dialer, etc. Please visit www.skylinkhome.com or contact us at support@skylinkhome.com for more information of how to fully utilize your Wireless Alarm System - MA Series.

6. FCC

This device complies with Part 15 of the FCC Rules. Operation is subject to the following two conditions: (1) This device may not cause harmful interference, and (2) This device must accept any interference received, including interference that may cause undesired operation.

WARNING:

Changes or modifications to this unit not expressly approved by the party responsible for compliance could void the user's authority to operate the equipment.

NOTE:

This equipment has been tested and found to comply with the limits for a Class B digital device, pursuant to Part 15 of the FCC Rules. These limits are designed to provide reasonable protection against harmful interference in a residential installation. This equipment generates, uses and can radiate radio frequency energy and, if not installed and used in accordance with the instructions, may cause harmful interference to radio communications.

However, there is no guarantee that interference will not occur in a particular installation. If this equipment does cause harmful interference to radio or television reception, which can be determined by turning the equipment off and on, the user is encouraged to try to correct the interference by one or more of the following measures:

- Reorient or relocate the receiving antenna.
- Increase the separation between the equipment and receiver.
- Connect the equipment into an outlet on a circuit different from that to which the receiver is connected.
- Consult the dealer or an experienced radio/TV technician for help.

7. CE

Declaration of Conformity

This equipment complies with the requirements relating to electromagnetic compatibility, EN 301489-3, EN300220-3, EN60950-1, EN50371. This equipment conforms to the essential requirement of the Directive (1999/5/EC) of the European Parliament and of the Council.

8. WARRANTY

If, within one year from date of purchase, this product should become defective (except battery), due to faulty workmanship or materials, it will be repaired or replaced, without charge. Proof of purchase and a Return Authorization are required.

9. CUSTOMER SERVICE

If you would like to order Skylink's products or have difficulty getting them to work or download latest information and user manual, please :

1. visit our FAQ section at www.skylinkhome.com, or
2. email us at support@skylinkhome.com



CUSTOMER SERVICE

Rm 1303, Block B, Veristrong Industrial Centre,

36 Aupuiwan Street, Fotan, N.T. Hong Kong.

Email: sales@skylinkhome.com

<http://www.skylinkhome.com>

P/N. 101Z706

©2009 SKYLINK GROUP