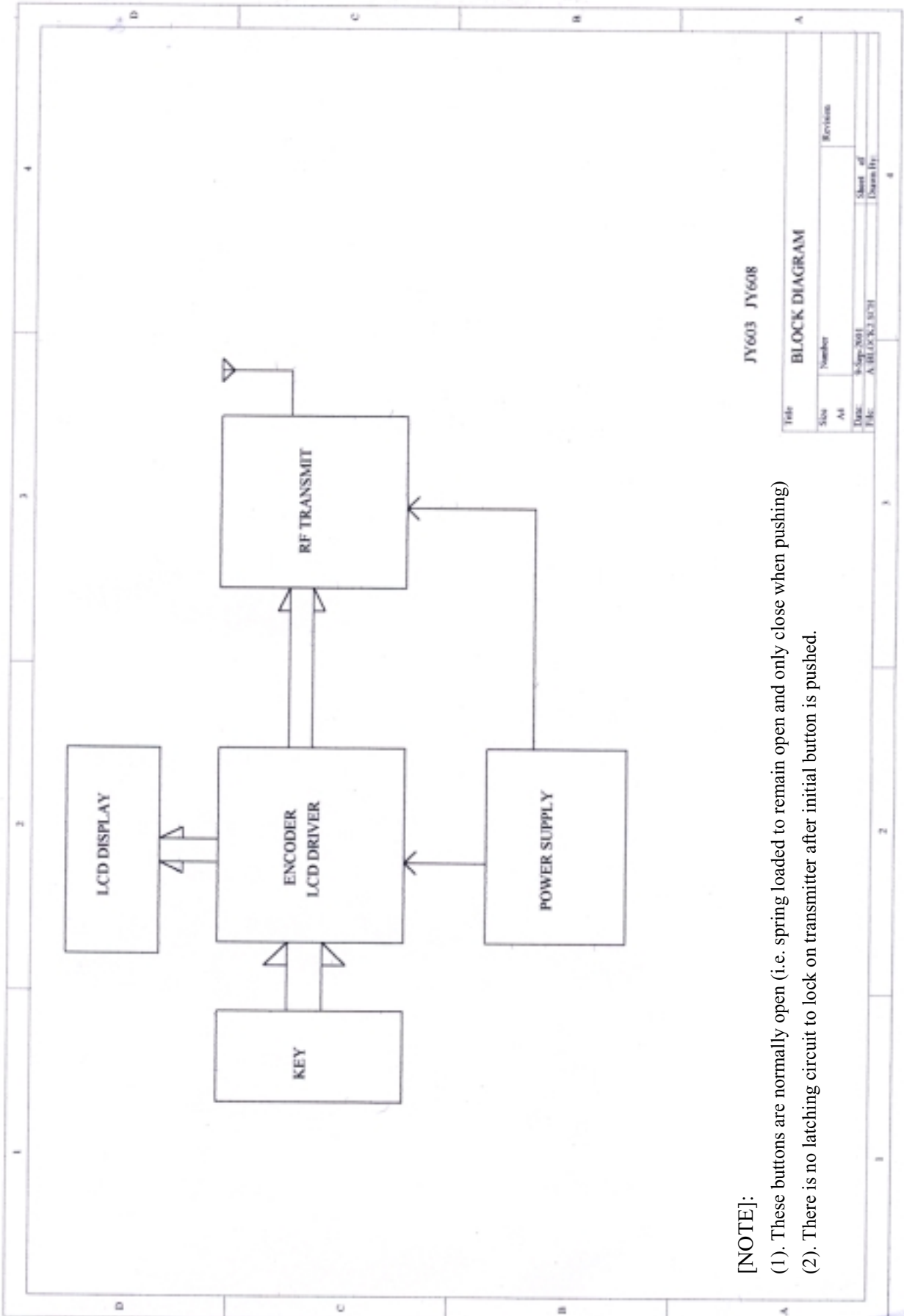


### Block Diagram



JY603 JY608

Title		BLOCK DIAGRAM	
Size	Number	Revision	
A4			
Date	Apr 2011	Sheet of	4
Doc	A BLOCK JY608	Drawn By	

**[NOTE]:**

- (1). These buttons are normally open (i.e. spring loaded to remain open and only close when pushing)
- (2). There is no latching circuit to lock on transmitter after initial button is pushed.