

CEILING FAN REMOTE CONTROLLER OPERATION AND INSTALLATION INSTRUCTIONS

(Please keep this instruction pamphlet.)

IMPORTANT

YOU MUST SET CEILING FAN MANUAL SWITCH TO HIGH SPEED AND LIGHT KIT (IF ANY) TO ON POSITION BEFORE OPERATING REMOTE CONTROL.

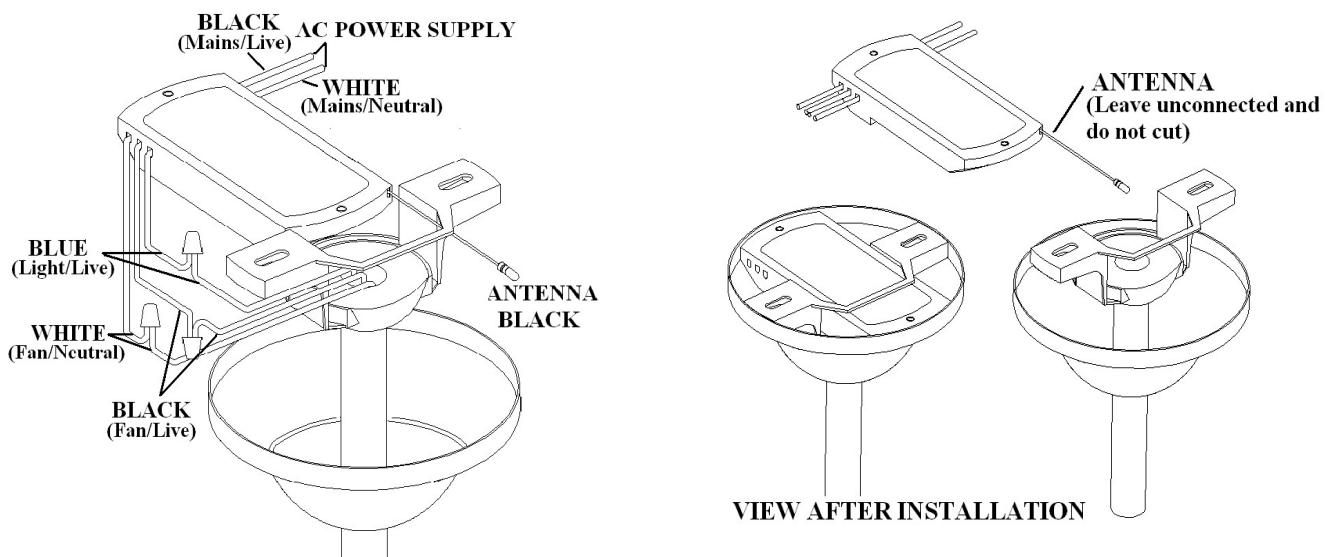
IMPORTANT POINTS TO REMEMBER:

1. Read and save these instructions.
2. Please note that all fixed wiring appliances should be installed by a qualified electrician.
3. The supply to the remote control receiver should be connected through a mains switch, i.e. existing wall switch.
4. Disconnect from power supply at wall switch before working on remote control receiver or ceiling fan.
5. Install receiver into the ceiling fan canopy of the fan to ensure proper protection.
6. This unit is to be used for the control of ceiling fan and in an AC120V 60Hz power supply only.
7. Do not install in damp locations or immerse into water. (For indoor use only.)
8. Do not pull on or cut leads shorter.
9. Do not drop or bump the unit.
10. PLEASE NOTE: The battery will weaken with age and should be replaced before leaking takes place as this will damage the transmitter. Dispose of used battery properly, keep the battery out of reach of children.
11. CAUTION: To reduce the risk of fire or injury, do not use this product in conjunction with any variable (rheostat) wall control.

INSTALLATION INSTRUCTIONS

CAUTION: INCORRECT WIRE CONNECTION WOULD DAMAGE THIS RECEIVER.

1. Ceiling fan must be set at HIGH speed and light kit (If any) at ON position by pulling the "Pull Switch" after installation.
2. Once the connection has been made, the receiver inserts into the drop rod hanging bracket. The canopy comes up to cover the receiver and bracket.



FUNCTIONS OF TRANSMITTER and LEARNING PROCESS

High - Turns fan on high speed.

Medium - Turns fan on medium speed.

Low - Turns fan on low speed.

Fan Off - Turns fan off.

Walk Away Light Delay™ - Tap delay button once to turn fan light off after 1 minute. **Note:** Light blinks to confirm that Walk Away Light Delay is active. Press any other button to cancel.

Light Control

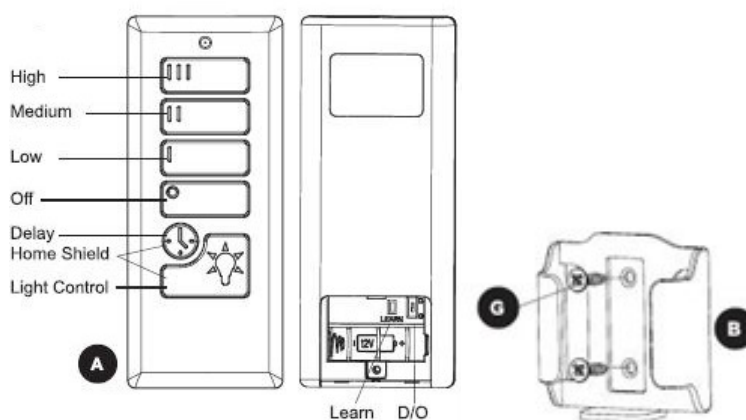
Incandescent Bulbs - Press to turn lights off and on. Press and hold light control to dim or brighten the lights.

CFL - Turns the lights on and off. **Note:** The dimmer function does not work with CFL.

Home Shield™ - Press and hold Light Control and Delay buttons for 3 seconds. Lights cycle on for 5-20 minutes and off for 60 minutes, simulating occupancy. Cycle repeats continuously until any other button is pushed to discontinue Home Shield mode.

D/O - Switch should be set to "O" for CFLs, which disables the dimming function. Flip to "D" for incandescent and other dimmable bulbs.

Learn - Syncs remote control to receiver. The remote was synced at the factory. Should it become necessary to re-sync the remote, turn off the main power, then turn it back on. Within 30 seconds, use a small screwdriver to press and hold the learn button on the remote for 3 seconds. The fan will turn on and light (if applicable) will blink three times, signaling a successful synchronization.



Installation of Transmitter Wall Mount Holder with Two screws

TR123B

To assure continued FCC compliance:

FEDERAL COMMUNICATIONS COMMISSION INTERFERENCE STATEMENT

This equipment has been tested and found to comply with the limits for a Class B digital device, pursuant to Part 15 of the FCC Rules. These limits are designed to provide reasonable protection against harmful interference in a residential installation. This equipment generates, uses and can radiate radio frequency energy and, if not installed and used in accordance with the instructions, may cause harmful interference to radio communications. However, there is no guarantee that interference will not occur in a particular installation. If this equipment does cause harmful interference to radio or television reception, which can be determined by turning the equipment off and on, the user is encouraged to try to correct the interference by one or more of the following measures:

- Reorient or relocate the receiving antenna.
- Increase the separation between the equipment and receiver.
- Connect the equipment into an outlet on a circuit different from that to which the receiver is connected.
- Consult the dealer or an experienced radio/TV technician for help.

CAUTION:

To assure continued FCC compliance:

Any changes or modifications not expressly approved by the grantee of this device could void the user's authority to operate the equipment.

FCC ID : KUJCE10901

This device complies with Part 15 of the FCC Rules. Operation is subject to the following two conditions: (1) This device may not cause harmful interference, and (2) this device must accept any interference received, including interference that may cause undesired operation.