

CEILING FAN REMOTE CONTROLLER OPERATION AND INSTALLATION INSTRUCTIONS

(Please keep this instruction pamphlet.)

IMPORTANT

YOU MUST SET CEILING FAN MANUAL SWITCH TO HIGH SPEED AND THE LIGHT KIT TO THE ON POSITION BEFORE INSTALLING THE REMOTE CONTROL.

IMPORTANT POINTS TO REMEMBER:

1. Read and save these instructions.
2. Please note that all fixed wiring appliances should be installed by a qualified electrician.
3. The supply to the remote control receiver should be connected through a mains switch, i.e. existing wall switch.
4. Disconnect from power supply at wall switch before working on remote control receiver or ceiling fan.
5. Install receiver into the ceiling fan canopy of the fan to ensure proper protection.
6. This unit is to be used for the control of ceiling fan and in an AC110/120V 60Hz power supply only.
7. The receiver is acceptable for installation in damp and wet rated fans, but cannot be submerged in water. The wall transmitter is only to be installed indoors.
8. Do not pull on or cut leads shorter.
9. Do not drop or bump the unit.
10. PLEASE NOTE: The battery will weaken with age and should be replaced before leaking takes place as this will damage the transmitter. Dispose of used battery properly, keep the battery out of reach of children.
11. CAUTION: To reduce the risk of fire or injury, do not use this product in conjunction with any variable (rheostat) wall control.

INSTALLATION INSTRUCTIONS

CAUTION: INCORRECT WIRE CONNECTION WILL DAMAGE THIS RECEIVER.

1. Ceiling fan must be set at HIGH speed before installation.
2. Once the connection has been made, the receiver inserts into the drop rod hanging bracket. The canopy comes up to cover the receiver and bracket. (FIG 1)

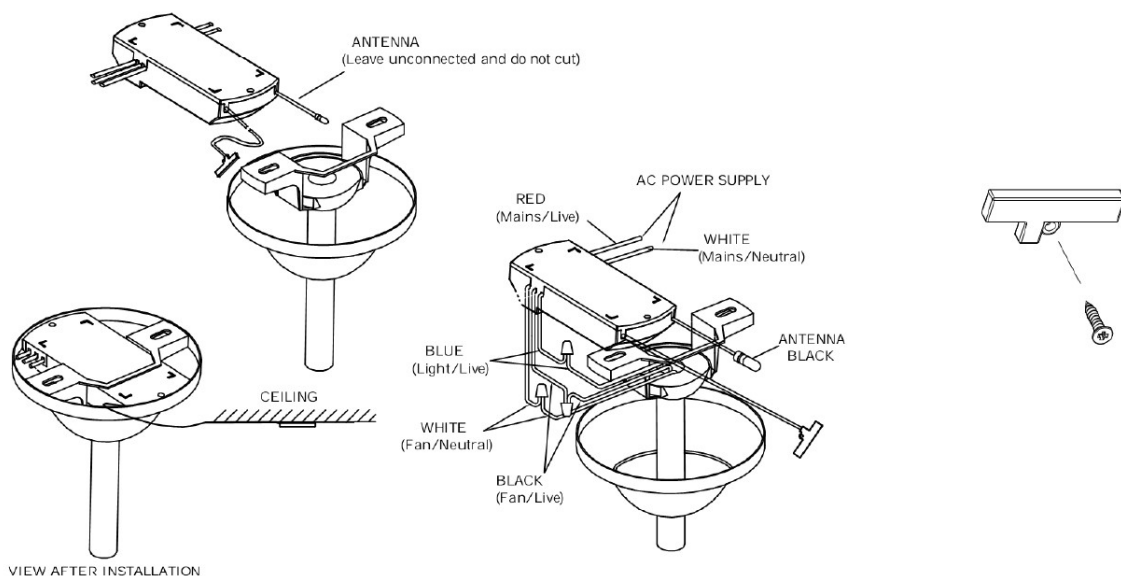


FIG. 1

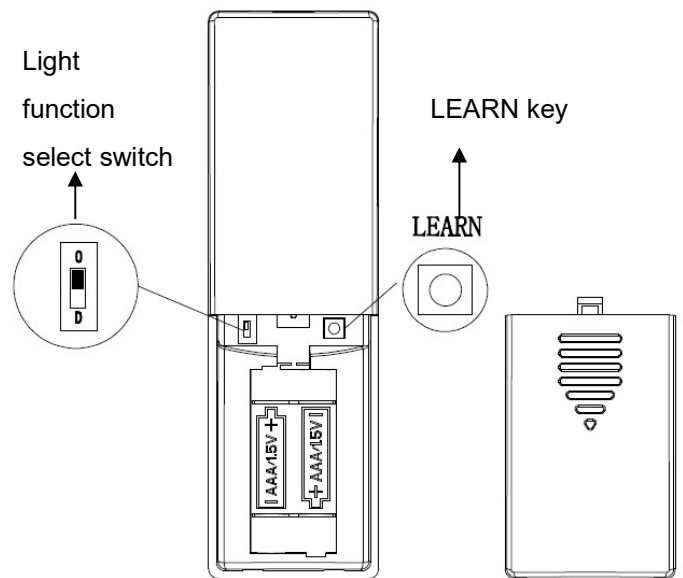
HANDSET TRANSMITTER OPERATION

FIG. 2

Activating the Learning process: Turn on the receiver power, press and hold the LEARN key (on the back of the transmitter) for 1~3S. Refer to FIG. 2

Light (if installed) will flash twice and off. This confirms that the learning setting is active and ok.

Transmitter use 2 pcs AAA/1.5V batteries.



LIGHT FUNCTION SELECT SWITCH

If the ceiling fan has fluorescent lighting, please slide the

“light function select switch” to “O” position. If the ceiling

fan has incandescent, halogen lighting or dimmerable LED, please slide the “light function select switch” to “D”

position. (FIG. 2)

FUNCTIONS:



: Turn off the ceiling fan.



: Turn on the fan at high speed.



: Turn on the fan at medium speed.



: Turn on the fan at low speed.



: Turn on the fan at lower speed.



: The fan will turn off after 2 hours automatically.



: The fan will turn off after 4 hours automatically.



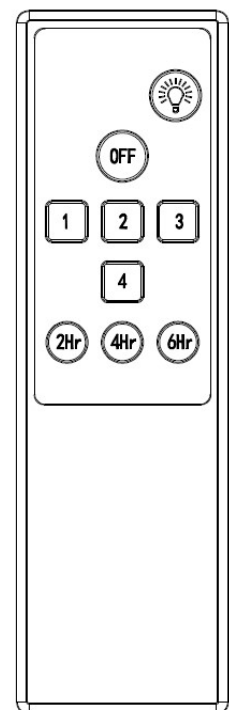
: The fan will turn off after 6 hours automatically.



ON/OFF-Turn the light on or off.

DIMMER-Press and hold to dim or brighten light to the desired level and release.

(Incandescent or halogen or dimmerable LED only and light function select switch on “D” position.)



Fanlight Sync APP manual

Downloading the Fanlight Sync Application

1. Using your smart device, navigate to the Apple App Store or Google Play. Download the free Fan-light Sync app and create an account.
2. Be sure your ceiling fan Wi-Fi controller is plugged in and within range of your Wi-Fi router AP.
3. With the app open, select“add device.”
4. Follow the instructions on the app to add your fan.

NOTE: The device default Wi-Fi SSID : Satellite_xxxxxx (ex:Satellite_400942), PW : 5atell1te

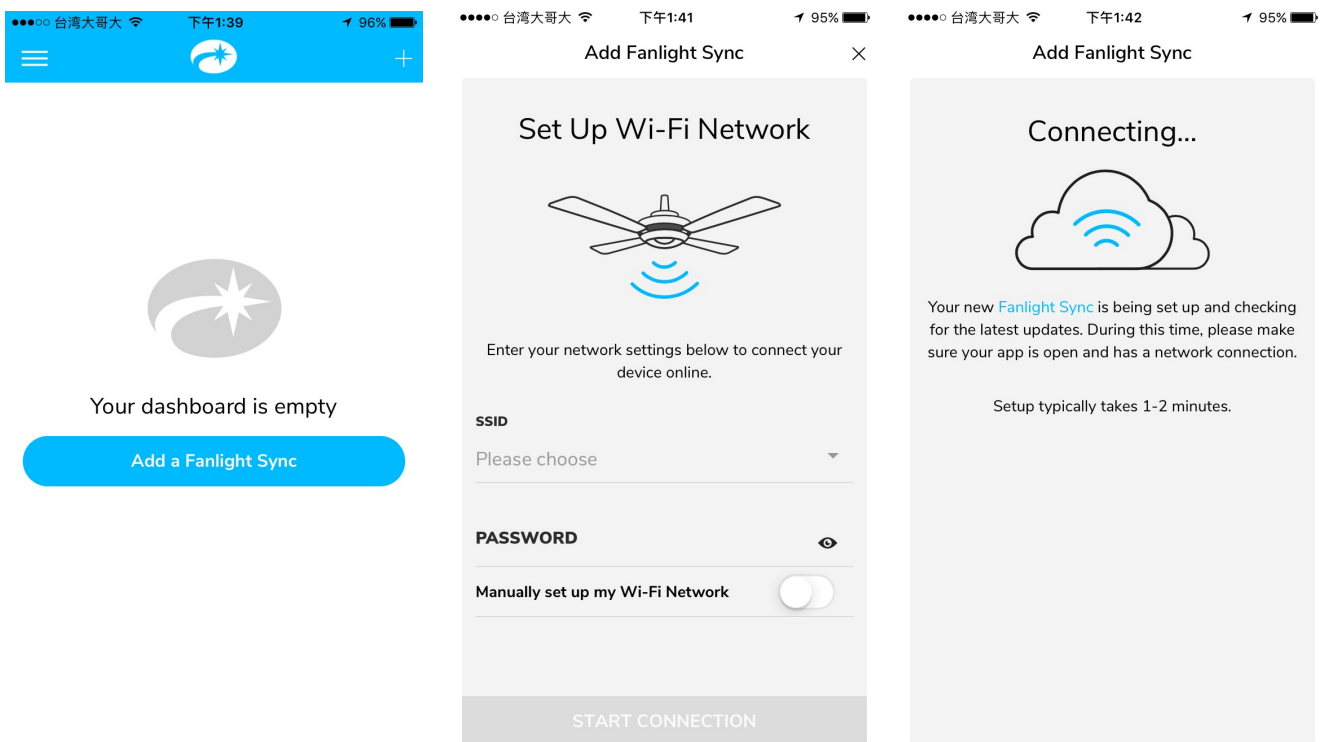
When instructed, turn on your fan. Once setup is successful, the fan will turn off and the light will blink 2 times.

NOTE: If using a dimmer with these lights, set dimmer at highest setting for best results.

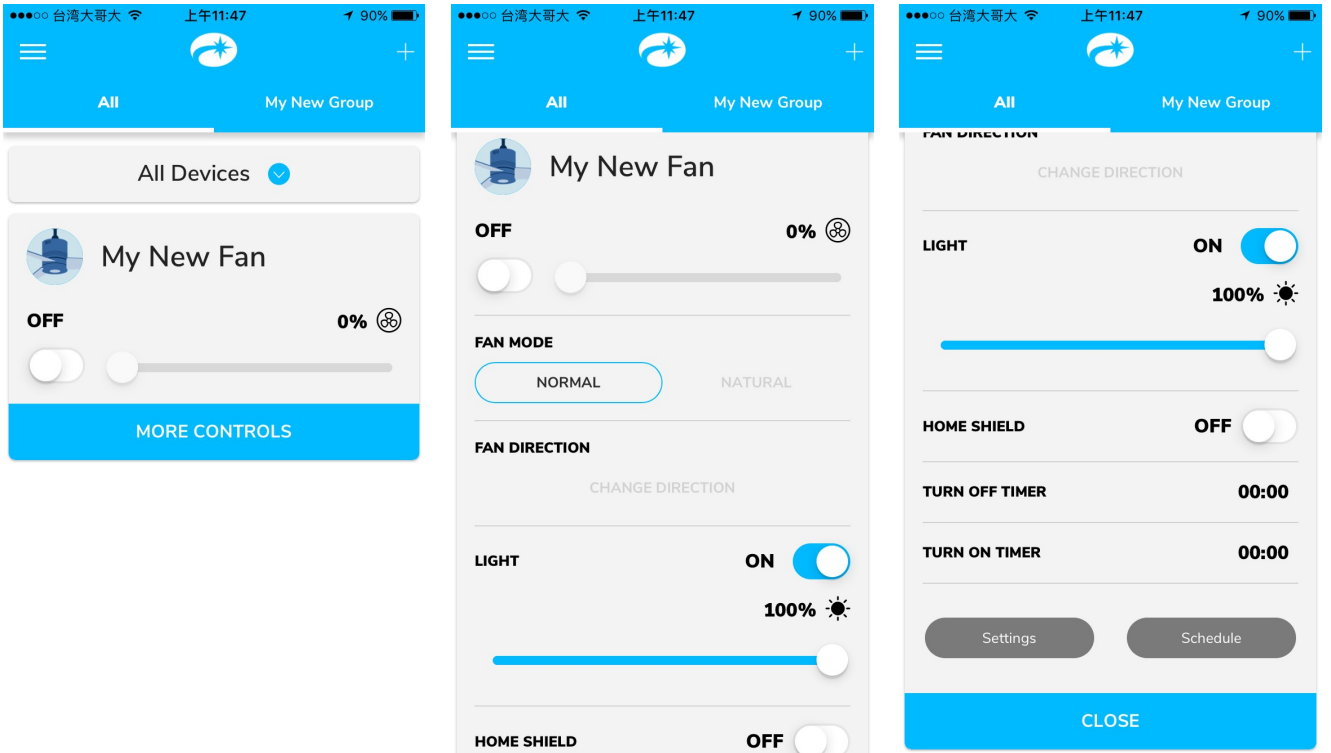
NOTE: If the setup failed, please reset the device to original setting and re-start the setting.

Reset your fan if the setup is failed. Turn off your fan for 3 seconds, then turn it back on for 3 seconds. Repeat these steps 5 times. The light will blink 1 times when factory reset is successful.

● Setup a new device



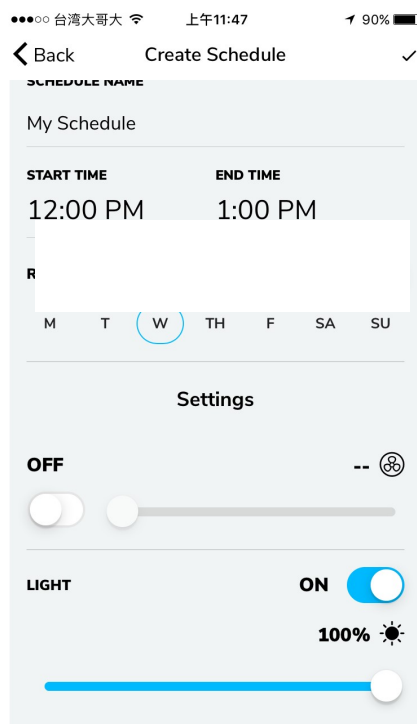
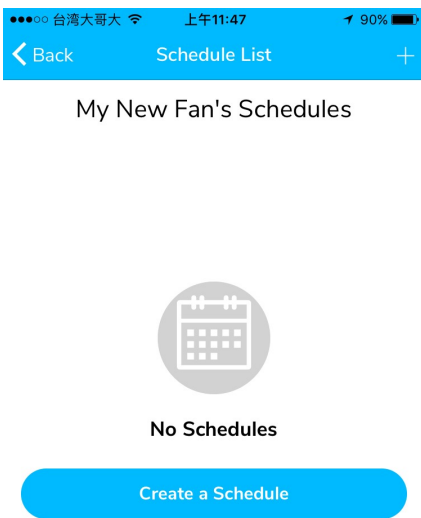
● Control Overview



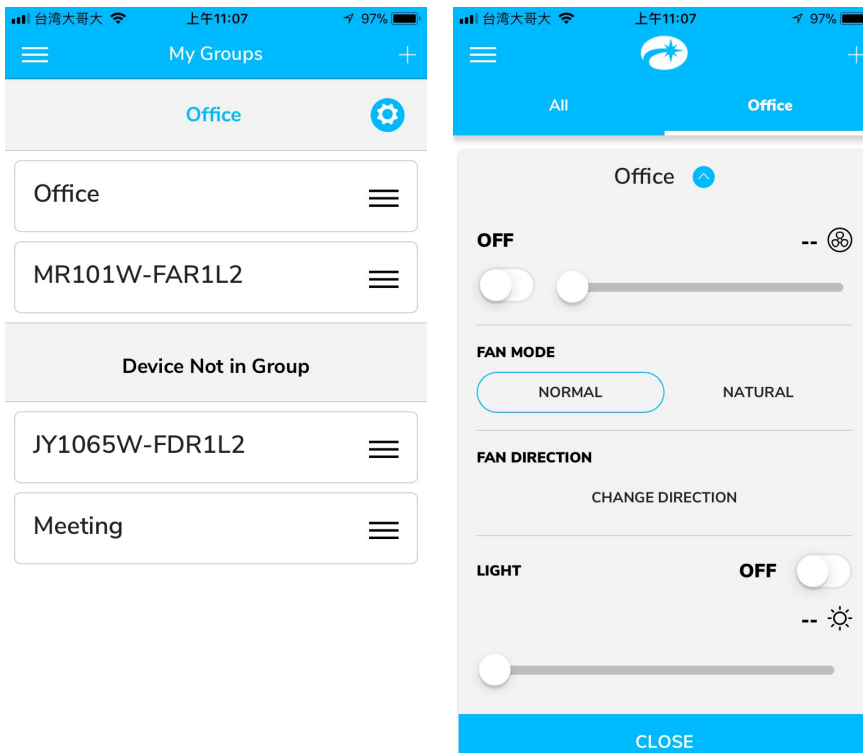
Fan Reverse (If supported)

Light - Turns light off or on. Select and slide to dim or brighten light.

● Real-time Schedule



● Group Control – Add devices as group.



To assure continued FCC compliance:

FEDERAL COMMUNICATIONS COMMISSION INTERFERENCE STATEMENT

This equipment has been tested and found to comply with the limits for a Class B digital device, pursuant to Part 15 of the FCC Rules. These limits are designed to provide reasonable protection against harmful interference in a residential installation. This equipment generates, uses and can radiate radio frequency energy and, if not installed and used in accordance with the instructions, may cause harmful interference to radio communications. However, there is no guarantee that interference will not occur in a particular installation. If this equipment does cause harmful interference to radio or television reception, which can be determined by turning the equipment off and on, the user is encouraged to try to correct the interference by one or more of the following measures:

- Reorient or relocate the receiving antenna.
- Increase the separation between the equipment and receiver.
- Connect the equipment into an outlet on a circuit different from that to which the receiver is connected.
- Consult the dealer or an experienced radio/TV technician for help.

CAUTION:

Any changes or modifications not expressly approved by the grantee of this device could void the user's authority to operate the equipment.

FCC ID : KUJCE10602

This device complies with Part 15 of the FCC Rules. Operation is subject to the following two conditions: (1) This device may not cause harmful interference, and (2) this device must accept any interference received, including interference that may cause undesired operation.

Exposure to Radio Frequency Radiation:

This equipment complies with FCC radiation exposure limits set forth for an uncontrolled environment.

This equipment should be installed and operated with minimum distance 20cm between the radiator & your body.