



**Model: WW338**

**User Manual**

**Manual del Usuario**

**Manual do Usuário**

**Manuel de L'utilisateur**



EN



# 2.4GHz Digital Expandable Cordless Phone with Integrated Weather Station

MODEL: WW338

USER MANUAL

## TABLE OF CONTENTS

<b>Important Safety Instruction</b> .....	1
<b>Safety Tips</b> .....	2
<b>Introduction</b> .....	3
<b>Key Features</b> .....	3
Handset and Base Unit – Front View .....	4
Base Unit – Bottom View .....	4
Handset – Front View .....	4
Charger – Front View .....	5
<b>Getting Started</b> .....	6
Connecting the AC Adaptor .....	6
Connecting to Phone Line .....	6
Installing the Handset Batteries .....	6
Installing the Base Unit Batteries .....	6
Charging the Handset Batteries .....	6
Final Safety Tips .....	7
Electrical Safety .....	7
<b>Basic Functions</b> .....	7
Making a Call .....	7
Answering a Call .....	7
Ending a Call .....	7
Call waiting .....	8
Message Waiting .....	8
Adjusting the Speaker Volume .....	8

Redialing a Call .....	8
Redial from the Last 10 Numbers .....	8
Fast Redial .....	8
Deleting a Redial Number .....	8
Saving Dialed Numbers into Memory ....	8
<b>Phonebook</b> .....	8
Storing Numbers in Phonebook .....	8
Keys to Use .....	9
Deleting Numbers from Phonebook .....	9
Editing Numbers in the Phonebook .....	9
Calling Numbers from Phonebook .....	10
Quick Browsing of Phonebook .....	10
<b>Caller ID Display</b> .....	10
Viewing Caller ID Records .....	10
Saving Caller ID Records in Phonebook ..	10
Formatting Caller ID Numbers .....	10
Deleting Caller ID Records .....	10
No Caller ID .....	11
Missed Calls .....	11
<b>During a Call</b> .....	11
Using the Mute Function .....	11
Using Speakerphone During a Call .....	11
<b>Handset Settings</b> .....	11
Setting the Ring Tone .....	11
Setting the Ring Tone Volume .....	11
Setting the Display language .....	11
Setting the Dial Mode .....	12
Setting the Time / Date Format .....	12
Setting the Area Code .....	12

EN


<b>Conference Call .....</b>	<b>12</b>	<b>Playing the Game .....</b>	<b>18</b>
<b>Weather Forecasting .....</b>	<b>12</b>	<b>Resetting Your System .....</b>	<b>18</b>
Weather Forecasting on the Handset ...	12	Setting Your Default Settings .....	18
Temperature on the Handset .....	13	Your Default Settings .....	18
Changing from Celsius to Fahrenheit...	13	Keypad Symbols .....	19
<b>Operating the Remote Sensor .....</b>	<b>13</b>	<b>Safety &amp; Care .....</b>	<b>19</b>
Installing Batteries .....	13	Safety Precautions .....	19
Low Battery Warning .....	14	Caring for the Product .....	19
Setting a Channel in Remote Sensor ..	14	Caution .....	19
Table Stand or Wall Mount .....	14	<b>Troubleshooting .....</b>	<b>20</b>
The Reset Button .....	14	Potential Issues .....	20
<b>Operating the Base Unit .....</b>	<b>14</b>	Problems with Multi-Handset Use .....	21
Paging the Handsets .....	15	Other Important Items .....	21
Settings the Base Unit Time .....	15	<b>Specifications .....</b>	<b>21</b>
Setting the Time Format .....	15	<b>About Oregon Scientific .....</b>	<b>22</b>
Setting the Date Format .....	15	<b>FCC Statement .....</b>	<b>22</b>
Setting the Date .....	15	<b>Declaration of Conformity .....</b>	<b>22</b>
Selecting Celsius or Fahrenheit .....	15		
Setting the Base Unit Alarm .....	16		
Turning the Alarm Off .....	16		
Installing the Sensor .....	16		
<b>Using Multiple Handsets .....</b>	<b>16</b>		
Intercom Calling Between Handsets ....	16		
Answering Intercom Calls .....	17		
Call Waiting .....	17		
Call Transfer Between Handsets .....	17		
<b>Registering Handsets to Base Unit .....</b>	<b>17</b>		
Registration Procedure .....	17		
De-Registration of Handsets .....	17		
<b>Playing the Game (Snake) .....</b>	<b>18</b>		

## IMPORTANT SAFETY INSTRUCTIONS

Some of the following information may not apply to your particular product; however, when using conference phone equipment, basic safety precautions should always be followed to reduce the risk of fire, electric shock and injury to persons, including the following:

1. Read and understand all instructions.
2. Follow all warnings and instructions marked on the product.
3. Unplug this product from the wall outlet before cleaning. Do not use liquid cleaners or aerosol cleaners. Use a damp cloth for cleaning.
4. This product should not be used while you are in a bathtub, shower or pool. Immersion of the product in water could cause an electrical shock.
5. Slots and openings in the cabinet back or bottom are provided for ventilation, to protect it from overheating. These openings must not be blocked or covered. The openings should never be blocked by placing the product on the bed, sofa, rug, or other similar surface. This product should not be placed in a built-in installation unless proper ventilation is provided.
6. This product should be operated only from the type of power source indicated on the marking label. If you are not sure of the type of power supply to your home, consult your dealer or local power company.
7. Do not allow anything to rest on the power cord. Do not locate this product where the cord will be abused by persons walking on it.
8. Do not overload wall outlets and extension cords as this can result in the risk of fire or electric shock.
9. Never push objects of any kind into this product through cabinet slots as they may touch dangerous voltage points or short out parts that could result in a risk of fire or electric shock. Never spill liquid of any kind on the product.
10. To reduce the risk of electric shock, do not disassemble this product, but take it to a qualified serviceman when service or repair work is required. Opening or removing covers may expose you to dangerous voltages or other risks. Incorrect reassembly can cause electric shock when the telephone equipment is subsequently used.
11. Do not expose the product to extreme temperatures such as areas near a hot radiator or stove or in a hot car.
12. Do not place lighted candles, cigarettes, cigars, etc., on the telephone.
13. Never touch uninsulated telephone wires or terminals unless the telephone line has been disconnected at the network interface.
14. Never install or modify telephone wiring during a lightning storm.
15. Never install telephone jacks in wet locations unless the jack is specifically designed for wet locations.
16. Use caution when installing or modifying telephone lines to prevent electrical shock and/or fire.
17. Unplug this product from the wall outlet and refer servicing to qualified service personnel under the following conditions:
  - A. When the power supply cord or plug is damaged or frayed.
  - B. If the product has been exposed to rain or water.
  - C. If the product does not operate normally by following the operating instructions.
  - D. If the product's cabinet has been damaged.

E. If the product exhibits a distinct change in performance.

18. Avoid using a telephone (other than a cordless type) during an electrical storm. There may be a remote risk of electric shock from lightning.
19. Do not use the telephone to report a gas leak in the vicinity of the leak.
20. Do not place this product on an unstable cart, stand or table.  
The product may fall, causing serious damage to the product.
21. Plug the adaptor to the socket-outlet which near the equipment and shall be easily accessible.
22.  Risk of explosion if battery is replaced by an incorrect type, use only SANIK, 3SN-AAA75H-S-JIF. Dispose of used batteries according to the instructions.
23. For servicing or replacement, you can purchase a suitable headset through service center or retailer shop.  
(see in [www.oregonscientific.com](http://www.oregonscientific.com))

### SAFETY TIPS

This product is designed to give you years of service if handled properly. Observe the following guidelines:

- Clean the unit with a damp cloth and mild detergent. Avoid dropping the unit or placing it in a high-traffic location.
- Never immerse the unit in water. This can cause electrical shock and damage the unit.
- Do not subject the Base Unit to extreme force, shock, or fluctuations in humidity.
- Do not tamper with the internal components.
- Do not mix new and old batteries or batteries of different types.
- Remove the batteries if storing this product for a long period of time.

2

- Do not scratch the LCD display.
- Do not make any changes or modifications to this product. Unauthorized changes may void your right to use this product.
- The technical specifications for this product and the contents of the user guide are subject to change without notice.

### CAUTION

To reduce the risk of fire, use only No. 26 AWG or larger telecommunication line cord.

### CAUTION



You must use a Class 2 power source that supplies 9V DC and delivers at least 400mA. Its plug must fit the phone's DC IN 9V jack.

The supplied adapter meets these specifications. Using an adapter that does not meet these specifications could damage the phone or the adapter.

Always connect the AC adapter to the phone before you connect it to AC power. When you finish, disconnect the adapter from AC power before you disconnect from the phone.

**SAVE THESE INSTRUCTIONS**

## INTRODUCTION

Thank you for selecting the Oregon Scientific™ WW338 2.4GHz Digital Expandable Cordless Phone with Integrated Weather Station as your product of choice. The Base Unit of the WW338 has a built-in thermometer and clock station that is capable of keeping track of minimum and maximum temperatures in different locations via transmissions from the remote sensor.

## KEY FEATURES

This powerful device bundles animated weather forecasting, indoor / outdoor wireless temperature and humidity readings, time / date keeping, and dual alarm features into a single tool that you can use from the convenience of your home.

The following items should be included in this package:

### WW338

- 1 handset
- 1 base unit
- AC / DC adaptor for the Base Unit
- Telephone line for the Base Unit
- Remote thermo-hygro sensor
- Handset battery pack
- Sensor wall-mount bracket
- Belt clip
- Sensor batteries
- User manual

### WW338H:

- 2 handsets
- 1 base unit
- 1 charger
- AC / DC adaptor for the Base Unit
- Telephone line for the Base Unit
- Remote thermo-hygro sensor
- Handset batteries
- Sensor wall-mount bracket
- Belt clip
- Sensor batteries
- User manual

### The WW338 Digital Phone Features:

- Handset speakerphone
- Intercom/Call Transfer/Conference call capability
- Weather forecasting
- Dual-crescendo alarms
- High/low temperature/hygrometer alarm
- Dual alarm with snooze function
- Up to 3 remote thermo-hygro sensors
- Full-dot graphic handset display
- 40-Caller ID memory
- User-selectable Celsius or Fahrenheit
- Built-in game on handset
- 10 ringer melodies and 4 standard ring tones
- Mute/Flash/Redial functionality
- Multiple language display – English, French, Spanish and Portuguese
- Caller ID display
- Headset jack & belt clip
- Sensor wall-mount bracket
- Phonebook review during conversation
- Redial feature for last 10 numbers

**NOTE:** Keep this manual handy as you use your new product. It contains practical step-by-step instructions, as well as technical specifications and warnings you should know.

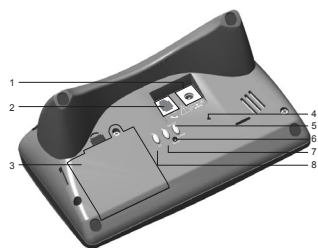
EN

## HANDSET AND BASE UNIT - FRONT VIEW



- |                                       |                   |
|---------------------------------------|-------------------|
| 1. Handset                            | 7. CHANNEL button |
| 2. LED Charge Indicator               | 8. ALARM button   |
| 3. UNANSWERED CALL / IN USE Indicator | 9. SET button     |
| 4. PAGE Button                        | 10. DOWN button   |
| 5. SNOOZE / LIGHT button              | 11. UP button     |
| 6. Base Unit LCD                      |                   |

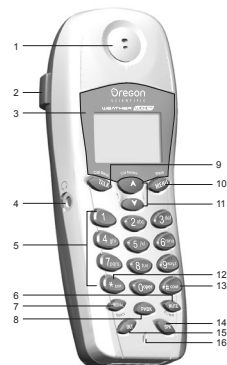
## BASE UNIT - BOTTOM VIEW



- |                        |                          |
|------------------------|--------------------------|
| 1. Power jack          | 5. ON / OFF ALARM button |
| 2. Telephone line jack | 6. RESET hole            |
| 3. Battery box         | 7. UP button             |
| 4. Speaker outlet      | 8. HI/LO button          |

4

## HANDSET - FRONT VIEW



1. Receiver
2. Belt Clip
3. LCD Display
4. Headphone jack
5. Keypad
  - Keypad 0-9, A-Z buttons.
  - Press the number to dial the call or use for text input i.e. editing the phonebook or caller identification.
6. MUTE / FORMAT button
  - Press this to mute the microphone during a call.
  - Press to select the format you want to use for a phone number i.e. no area code, with area code, with area and international code.
7. REDIAL / DELETE button
  - Press to browse redial list.
  - Press to redial a phone number.
  - Press to delete digits when dialing a phone number.
8. PHONEBOOK (PHBK) button
  - Press to view the phonebook.



**9. TALK / CALLBACK button**

- Press to begin and end a phone call.
- Press to callback a number.

**10. MENU / FLASH button**

- Press to access main menu.
- Press to confirm a selected option.
- Press to move from a current call, to call waiting.

**11. ARROW KEYS**

- Press to move up and down menu options.
- Press to increase or decrease the speaker volume.
- Press to browse Caller ID records, phonebook and redial list.

**12. EXIT / \* button**

- Press to exit an operation and return to standby mode.
- Press to use \* in text.

**13. CONF / # button**

- Press to make a conference call.
- Press to use # in text.

**14. SPEAKERPHONE (SPK) button**

- Press to turn the speakerphone on or off.

**15. INTERCOM (INT) button**

- Press to make an intercom call.
- Press to make a conference call.
- Press to transfer a call.

**16. Microphone**

**CHARGER - FRONT VIEW**

EN

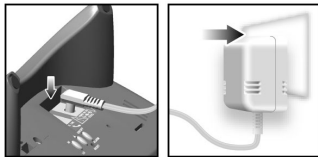


1. Handset
2. AC / DC power
3. Charge LED

## GETTING STARTED

### CONNECTING THE AC ADAPTOR

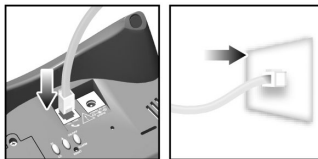
1. Connect the AC adaptor socket to the Base Unit and to your room's power socket.



2. Rest the handset on the Base Unit to charge. Once plugged in, allow the handset to charge for 15 hours before using.

### CONNECTING TO PHONE LINE

Connect the phone line to the Base Unit and to your room's telephone socket.



### INSTALLING THE HANDSET BATTERIES

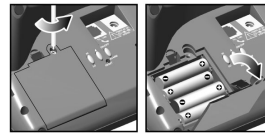
Batteries come with your phone. One is already installed in one handset, while the other needs to be installed in the second handset.

Fitting the batteries in the handset

1. Insert the battery into the handset by inserting the piece at the end of the wire into the top left of the battery indentation on the handset.
2. Fit the battery compartment cover by sliding it down so that it clicks firmly into place.

### INSTALLING THE BASE UNIT BATTERIES

Four batteries (AAA size) come with your Base Unit.



Insert the four batteries as indicated, matching correct polarity (+, -)

**NOTE:** Reversing the orientation may damage the Base Unit.

### CHARGING THE HANDSET BATTERIES

Before using the handset, charge the handset for at least 15 hours.

Whenever you see the battery icon on the handset display become nearly empty, or hear the warning tone during the call, please:

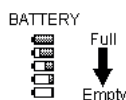
- End the call as soon as possible.
- Don't use the speakerphone mode for conservation since this will further reduce the take time.
- Put the handset back on the charger for charging until the battery icon returns to high level.

To charge the handset, place the handset in the charger. The base charge light will come on to indicate the charging of handset. Always put the handset in the base cradle with the keypad facing outwards.

**NOTE:** Please note the following:

- Standby time: 5 days
- Talk time: 7 hours
- Handset charging time: 15 hours
- Normal conditions of use: 0°C to 45°C
- AC adaptor for base unit: 120VAC 9V 60Hz 400mA

When the battery is fully charged, the handset battery icon will show the battery full in the top right on the LCD display.



### FINAL SAFETY TIPS

Due to radio interference in the environment, occasional loss of synchronization between the handset and base may occur for a very short duration. The base will very quickly change to another channel automatically to overcome the interference and restore synchronization.

### ELECTRICAL SAFETY

- **Do not** install the base unit near a sink, bath or shower, or anywhere else where it could get wet. Electrical equipment can cause serious injury if used while you are wet or standing in water.
- If the base unit ever falls into water, **do not** retrieve it until you have unplugged the power lead from the mains and the telephone line plug from the telephone socket; then pull it out by the unplugged cables.
- **Never** use your weather phone in the open air during a thunderstorm - unplug the Base Unit from the telephone line and the main socket when there are storms in your area. Damage caused to your phone by lightning is not covered by the guarantee.

### BASIC FUNCTIONS

Usually, a loss of reception means you are too far from the Base Unit, or there is interference between the two units. Make sure to:

- Stay within a range of 300 meters from the Base Unit while using the handset.

- Avoid interference such as TV or other electrical appliances.

**NOTE:** In this user manual, all **BOLDED**, capitalized letters are buttons that appear in your new weather phone.

### MAKING A CALL

Using the **TALK** button:

1. Press **TALK** to get the dial tone, and dial the number. If you make a mistake, press **TALK** again to cancel the whole number.

OR

2. Dial the number then press **TALK**.

**NOTE:** You can use the **TALK** button to toggle between Talk Mode and Standby Mode.

Using the Speakerphone (**SPK**) button:

1. Press **SPK** to get the dial tone, and dial the number.

OR

2. Dial the number then press **SPK**.

**NOTE:** If you are in Speakerphone Mode and you want to use the handset, press **TALK** to switch off the speakerphone first.

### ANSWERING A CALL

The handset will ring when there is an external call.

- Press **TALK** OR press **SPK**. (This will enable the speakerphone function).

**NOTE:** If the handset is placed in the recharge cradle of the Base Unit when it is in Talk Mode, it will automatically enter the Standby Mode.

### ENDING A CALL

- Press **TALK**.

### CALL WAITING

You will hear a call waiting tone:

- Press **FLASH** to switch from an existing call to call waiting.

### MESSAGE WAITING

- “**Message Waiting**” will appear on the screen. Follow the voice message commands to enter your phone network operator’s message service.

### ADJUSTING THE SPEAKER VOLUME

To adjust the speaker volume:

- Press **TALK**, then press the **ARROW KEYS** to adjust the speaker volume accordingly.

### REDIALING A CALL

- Press **TALK**, then press **REDIAL**.

### REDIAL FROM THE LAST 10 NUMBERS

1. Press **REDIAL** to see your last call record.
2. Use the **ARROW KEYS** to select a number.
3. Press **TALK** to dial the number.

If you want to edit the phone number before redialing:

1. Press **REDIAL**, then press **MENU**.
2. Use **ARROW KEYS** to select “**Edit for Call**”, then press **MENU**.
3. Use the **0-9** buttons to edit the number.
4. Press **TALK** to dial the number.

### FAST REDIAL

When you make a call and hear the busy tone, press **REDIAL**. The phone will quickly redial the number within 3 seconds.

### DELETING A REDIAL NUMBER

1. Press **REDIAL** to see your last call record.
2. Use the **ARROW KEYS** to select a number, then press **MENU**.
3. Select “**Delete Record**”.
4. Press **MENU**.
5. Select “**Yes**” and then press **MENU** to confirm.

### SAVING DIALED NUMBERS INTO MEMORY

The handset will automatically save the last 10 numbers you dialed. To save dialed numbers into your Phonebook:

1. Press **REDIAL**. (The last number is listed).
2. Use the **ARROW KEYS** to select a phone number, then press **MENU**.
3. Select “**Save Phonebook**” to save number, then press **MENU**. “**SAVED**” will appear on the screen to confirm the action.

### PHONEBOOK

- The phone can store 50 phone numbers in the phonebook of up to 24 digits.
- The name of the phone number can be stored with a maximum of 15 characters.

### STORING NUMBERS IN THE PHONEBOOK

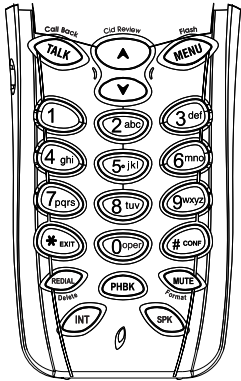
1. Press **PHBK**.
2. Press **MENU**.
3. Use the **ARROW KEYS** to select “**Add Record**”, then press **MENU**.
4. The handset display shows “**<Enter Name>**” and “**<Enter Number>**”.
5. Enter the name (see key guide below) and then press **MENU**.
6. Enter the number and then press **MENU** to confirm.

7. The handset will beep twice indicating that the record has been stored.

**NOTE:** If only a phone number and no name is input, then the record can still be saved.

KEYS TO USE

When entering a name, "B" will be entered by pressing the "2" button once, followed by pressing "2" again within 1 second. If pressed beyond 1 second, "A" is entered and the second press of "2" will give the entry of "AA".



The list of characters is shown below:

	Capital Letter	Small Letter
1	SPACE 1 _ - + = ^ ~ . , ; : ? !	SPACE 1 _ - + = ^ ~ . , ; : ? !
2	ABC2Ä/EAÄÄÄÄÇ	abc2äæäääääç
3	DEF3ÉÉÉÉÐ	def3ééééð
4	GHI4İİİİ	ghi4iıiıı
5	JKL5	jkl5
6	MNO6ÖØÖÖÖÖÑ	mno6öøöööööñ
7	PQRS7	pqrs7
8	TUV8ÚÚÚÚ	tuv8úúúúü
9	WXYZ9ÝÞ	wxyz9ýþ
0	0 * # \$ % & / \   ( ) [ ] < >	0 * # \$ % & / \   ( ) [ ] < >

*	Press when editing a name to return to Standby Mode	Press when editing a number to get "**"
#	Press to change between capital and small letter	Press to change between capital and small letter

**NOTE:** Use the # key to change from uppercase to lowercase.

DELETING NUMBERS FROM PHONEBOOK

To delete 1 record:

1. Press **PHBK**.
2. Use the **ARROW KEYS** to select the number you want to remove, then press **MENU**.
3. Select **"Delete Record"** and then press **MENU**.
4. When asked to confirm the deletion, select **"Yes"**.
5. Press **MENU** to remove the number.
6. The handset will beep twice indicating that the record has been deleted.

To delete all records:

1. Follow steps 1-3 above and select **"Delete all?"**
2. Now follow steps 4-6 above.

EDITING NUMBERS IN THE PHONEBOOK

1. Press **PHBK**.
2. Use the **ARROW KEYS** to select the number you want to edit, then press **MENU**.
3. Select **"Edit Record"** and then press **MENU**.
4. Edit the name if needed, then press **MENU**.
5. Edit the phone number if needed, then press **MENU**.
6. You will hear the double beep from the handset indicating that the task is complete.

### CALLING NUMBERS FROM PHONEBOOK

1. Press **PHBK** whilst on an active call.
2. Use the **ARROW KEYS** to select a number, then press **MENU** to dial the number.

### QUICK BROWSING OF PHONEBOOK

1. Press **PHBK**.
2. Use the **ARROW KEYS** to select a phonebook entry, OR press the key with the 1<sup>st</sup> letter of the person's name you are looking for. E.g. Press key 7, 4 times to get quick access to a name beginning with 'S'
3. Press **TALK** to dial.

**NOTE:** You can use the Phonebook function whilst on an active call.

### CALLER ID DISPLAY

If you have subscribed to this service from your phone network operator, the caller's phone number will be shown on the handset display when there is an incoming call. The phone can store the caller ID's of up to 40 different call numbers.

**NOTE:** If the caller's phone number was stored in the phonebook, the associated name will be displayed with the phone number.

Each entry in the caller list has:

- Caller number (up to 24 digits).
- The caller name (up to 15 characters) if this is stored in the phonebook or supplied from the phone network.
- The date and time of the call.
- The number of calls made to this number (up to 40).

### VIEWING CALLER ID RECORDS

1. When the phone is in Standby Mode use the **ARROW KEYS** to browse through Caller ID records.

10

2. If you need to edit the phone number before making the call press **MENU**, then use the **ARROW KEYS** to select "**Edit for Call.**"
3. Use the **0-9** buttons to edit the number.
4. Press **TALK** to dial the number.

**NOTE:** If "**NO CALLS**", appears on the screen then no records are stored in the Caller ID memory.

### SAVING CALLER ID RECORD IN PHONEBOOK

When you have a Caller ID record on your screen:

1. Press **MENU**, then use the **ARROW KEYS** to select "**Save Phonebook**".
2. Press **MENU**. "**SAVED**" will appear on the screen to confirm the action.

**NOTE:** When the Caller ID memory is full, it will automatically delete your 1<sup>st</sup> Caller ID record.

### FORMATTING CALLER ID NUMBERS

1. Use the **ARROW KEYS** to select a phone number in the Caller ID memory, then press the **FORMAT** key.
2. The number you selected can now be formatted by pressing **FORMAT** to get the format you prefer.
3. When the format is selected, press **TALK** to dial the number.

### DELETING CALLER ID RECORDS

To delete 1 record:

1. Press the **ARROW KEYS** whilst in Standby Mode and select the number you want to delete. Then, press **MENU**.
2. Select "**Delete Record**", then press **MENU**.
3. Select "**Yes**" and then press **MENU** to confirm.

To delete all records:

1. Press the **ARROW KEYS** whilst in Standby Mode. Then, press **MENU**.


2. Select **"Delete All"**, then press **MENU**.
3. Select **"Yes"** and then press **MENU** to confirm.

#### NO CALLER ID

If a caller has withheld their Caller ID name and / or number, one of the following messages will appear on your screen:

- **BLOCKED NUMBER**
- **UNKNOWN NUMBER**
- **BLOCKED NAME**
- **UNKNOWN CALLER**
- **BLOCKED CALL**
- **UNKNOWN NAME**

#### MISSED CALLS

If you miss a call, the handset will display this symbol . When you view the Caller ID of your missed calls the following notifications will appear on the screen:

- **"NEW"** – This is the first missed call from this particular Caller ID.
- **"REPT"** – This is not the first missed call from this particular Caller ID.

#### DURING A CALL

##### USING THE MUTE FUNCTION

To mute the handset:

- Press **MUTE**.
- Press **MUTE** again to un-mute the handset and return to the normal mode.

**NOTE:** If the phone is muted, you cannot dial any digits until the mute button is released.

##### USING SPEAKERPHONE DURING A CALL

During a conversation:

- Press **SPK** to turn the speakerphone on.
- Press **TALK** again to turn the speakerphone off.

#### HANDSET SETTINGS


##### IMPORTANT:

- If you press the **TALK** button you will enter Talk Mode.
- If you press the **MENU** button you will enter Menu Mode.
- You cannot enter the Menu Mode when the phone is in Talk Mode. To exit the Talk Mode press **TALK**.

##### SETTING THE RING TONE

You have a choice of 10 melodies and 4 tones for incoming calls. To select a ring tone:

1. Press **MENU**, then use the **ARROW KEYS** to select **"Handset Setting"**.
2. Press **MENU**.
3. Select **"Ringtone"**, then press **MENU**.
4. Select the melody or tone you prefer, then press **MENU** to confirm.

**NOTE:** If the ring volume is turned off, you will not hear the ring melody while adjusting the ring tone and LCD will display "  " icon.

##### SETTING THE RING TONE VOLUME

1. Press **MENU**, then use the **ARROW KEYS** to select **"Ringer Volume"**.
2. Press **MENU**.
3. Use the **ARROW KEYS** to increase or decrease the volume.
4. Press **MENU** to confirm.

##### SETTING THE DISPLAY LANGUAGE

To change language:

1. Press **MENU**, use the **ARROW KEYS** to select **"Handset Setting"**, then press **MENU**.
2. Select **"Language"**, then press **MENU**.
3. Select the language you want, then press **MENU** to confirm.

**NOTE:** The default language for the handset display is English. You can also change the language to French, Spanish and Portuguese.

#### SETTING THE DIAL MODE

In order to provide compatibility with other phone systems, your phone can be set to either Pulse dialing (same as rotary dial phones), or Tone dialing (DTMF).

To set the Dial Mode:

1. Press **MENU**, then use the **ARROW KEYS** to select "**Handset Setting**".
2. Press **MENU**.
3. Select "**Dialing**", then press **MENU**.
4. Select either "**Tone**" or "**Pulse**" mode, then press **MENU** to confirm.

#### SETTING THE TIME / DATE FORMAT

1. Press **MENU**, then use **ARROW KEYS** to select "**Handset setting**".
2. Press **MENU**.
3. Select "**Time & Date**", then press **MENU**.
4. Select either "**Time Format**" or "**Date Format**", then press **MENU**.
5. Then select your chosen format and press **MENU**.

#### SETTING THE AREA CODE

1. Press **MENU**, then use the **ARROW KEYS** to select "**Handset Setting**".
2. Press **MENU**.
3. Select "**Area Code**", then press **MENU**.
4. Enter your 3-digit area code, then press **MENU** to confirm.

#### CONFERENCE CALL

You can have a conference conversation with an external call party and 2 internal calling parties.

1. First establish the call with the external party by either making an external call or answering an incoming call.
2. Press **INT** to make an intercom call to another handset. The external party will be on hold.
3. The internal party answers your intercom call by pressing **TALK**.
4. Then you press **CONF** and hold for about 2 seconds (you will hear a confirmation key tone).
5. Then the external party, the other internal party and you can talk together.

OR

A second internal party can join in on a call between an internal and external party by simply pressing **TALK**.

**NOTE:** You cannot have an intercom conversation between a handset and the Base Unit.

#### WEATHER FORECASTING

##### WEATHER FORECASTING ON THE HANDSET

The weather forecast display is the first LCD display on the Base Unit. The outdoor temperature is shown on the second line of the LCD display. It has an icon on the left to represent the temperature recorded by the external sensor on channel 1, as well as the humidity shown on the right of the icon.

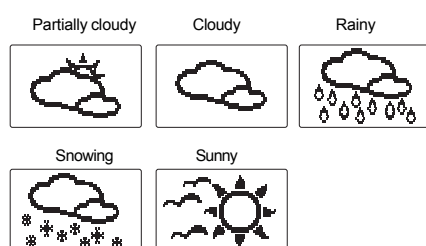
To display the weather forecasting symbols on the handset:

1. Press **MENU**.
2. Use the arrow keys to select "**Weather**", then press **MENU**.



3. Use the **ARROW KEYS** to select "**Forecast**", then press **MENU**.
4. After the double beeps confirming selection, press the **EXIT** key.

You should now be in stand-by mode showing one of the five forecasting symbols. These include:



#### IMPORTANT:

- The accuracy of weather forecasting when using pressure trend alone is about 70 to 75 percent and, therefore, the manufacturers and suppliers cannot be held responsible for any inconvenience caused by an inaccurate weather forecast.
- The weather forecast symbols may not reflect current weather condition. The symbols are forecasting the future.
- A "sunny" forecast covering the nighttime reflects fine, clear weather.

To remove the weather forecasting symbols on the handset:

1. Press **MENU**.
2. Use the **ARROW KEYS** to select "**Weather**", then press **MENU**.
3. Use the **ARROW KEYS** to select "**Off**", then press **MENU**.
4. After the double beeps confirming selection, press the **EXIT** key.

#### TEMPERATURE ON THE HANDSET

The handset can display the temperature Information for both the built-in and external sensors. To view the temperature readings on the handset display:

1. Press **MENU**.
2. Use the **ARROW KEYS** to select "**Weather**", then press **MENU**.
3. Use the **ARROW KEYS** to select "**Temperature**", then press **MENU**.
4. After the double beeps confirming selection, press the **EXIT** key.

The display will toggle between the date, time and internal/external temperature with relative humidity.

**NOTE:** If multiple sensors are installed to gather temperature and humidity readings from other areas, the phone will cycle through these readings as well.

#### CHANGING FROM CELSIUS TO FAHRENHEIT

1. Press the **MENU** button, then use the **ARROW KEYS** to select "**Handset setting**".
2. Press the **MENU** button.
3. Select "**Temp Format**", then press **MENU**.
4. Select either "**Fahrenheit**" or "**Celsius**", then press **MENU** to confirm.

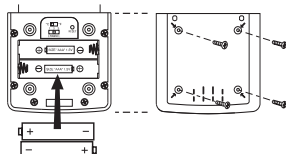
#### OPERATING THE REMOTE SENSOR

##### INSTALLING BATTERIES

To begin using the remote sensor:

1. You must first install two triple "A" (AAA) batteries by taking a Philips screwdriver and removing the four screws in the back bracket.
2. Insert batteries into the back.

- Before screwing the back bracket on to the remote sensor, you need to reset the sensor by pressing the reset hole with a blunt stylus, such as an "unfolded" paper clip.



**NOTE:** Beside the **RESET** button on the back of the remote sensor, there is a switch to select the channel of the remote sensor.

- Take the four bolts and screw them back in to replace the back bracket.

**NOTE:** Make sure the thin black rubber lining around the circumference of the batteries lines up with the crease in the back bracket so water does not seep in to the sensor if wet.

#### LOW BATTERY WARNING

When it is time to replace the batteries, the low-battery indicator will show up when the respective channel is selected. The battery level of the main unit will be shown on the indoor temperature display when it is running low.

#### SETTING A CHANNEL IN REMOTE SENSOR

The individual channel temperatures will be displayed on the 2<sup>nd</sup> line and the indoor temperature on the 3<sup>rd</sup> line. The Base Unit will automatically update its readings at about 30-second intervals.

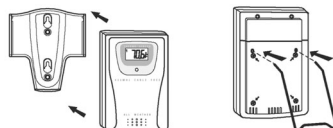
- Take a Philips screwdriver and remove the four screws in the back bracket.
- Move the black switch to 1, 2 or 3.
- Take the four bolts and screw them back in to replace the back bracket.

If no signals are received, blanks " \_ . \_ °C \_ %" will be displayed and the kinetic wave icon will show.

**NOTE:** Once a channel is assigned to a remote unit, you can only change it by replacing the batteries or resetting the unit.

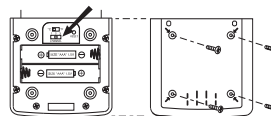
#### TABLE STAND OR WALL MOUNT

The remote sensor has a retractable table stand, which when flipped open can support the unit on a flat surface. Or you can flip close the stand and mount the unit on a wall using the recessed screw hole.



#### THE RESET BUTTON

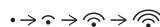
This button is only used when the unit is operating in an unfavorable way or malfunctioning. Insert a pointed object such as an unfolded paper clip into the reset hole, then press and hold. All settings will return to their default values.



#### OPERATING THE BASE UNIT

The Weather Base Unit displays the weather forecast as well as the outdoor and indoor temperature and relative humidity. You may also set the alarm to activate, indicating when a certain temperature or humidity has been reached.

**NOTE:** On the top line in the Base Unit, the radio signal should show the signal emitting a radio frequency to the remote sensor.



### PAGING THE HANDSETS

This feature is very useful if you can't remember where you put your handset. Make the lost handset ring for a fixed time of 2 minutes by pressing **PAGE** in the cradle on the Base Unit.

**NOTE:** You cannot have an intercom conversation between a handset and the Base Unit.

- To look for all handsets, press the **PAGE** button in the cradle of the Base Unit.
- To stop the paging, select any key on the handset or press the **PAGE** button again.

### SETTING THE BASE UNIT TIME

1. Press the **ALARM** button 2 or 3 times to set it at the month-and-day screen.
2. Press and hold down the **SET** button for 2 or more seconds. You should now see "24hr/12hr" flashing on the bottom left of the screen.
3. Press the **SET** button again to change the flashing image to the time.
4. Use the **ARROW KEYS** to change the time
5. Once the time is set, press the **SET** button five more times to escape the set-up mode.

**NOTE:** Updating the date and time on the Base Unit will synchronize all other handsets.

### SETTING THE TIME FORMAT

1. Press the **ALARM** button 2 or 3 times to set it at the month-and-day screen.
2. Press and hold down the **SET** button for 2 or more seconds. You should now see "24hr/12hr" flashing on the bottom left of the screen.
3. Use the **ARROW KEYS** to change the time format.

**NOTE:** By entering this mode, you can also change time display, M/D vs. D/M, date and month and Fahrenheit and Celsius (see below for more instruction).

4. When set, then press the **SET** to escape set-up mode.

**NOTE:** By pressing and holding down the **UP** or **DOWN** buttons, you can increase or decrease the settings at a much faster rate.

### SETTING THE DATE FORMAT

1. Press the **ALARM** button 2 or 3 times to set it at the month-and-day screen.
2. Press and hold down the **SET** button for 2 or more seconds. You should now see "24hr/12hr" flashing on the bottom left of the screen.
3. Press the **SET** button twice more to change the flashing image to the date in the lower right of the screen.
4. Use the **ARROW KEYS** to change the date format.
5. Once the time is set, then press the **SET** to escape set-up mode.

### SETTING THE DATE

1. Press the **ALARM** button 2 or 3 times to set it at the month-and-day screen.
2. Press and hold down the **SET** button for 2 or more seconds. You should now see "24hr/12hr" flashing on the bottom left of the screen.
3. Press the **SET** button 3 more times to change the flashing image to the date in the lower right of the screen.
4. Use the **ARROW KEYS** to change the date, then press the **SET** to escape set-up mode.

**NOTE:** The latest setting on any handset will supercede the previous setting on other handsets and Base Unit.

### SELECTING CESIUS OR FAHRENHEIT

1. Press the **ALARM** button 2 or 3 times to set it at the month-and-day screen.
2. Press and hold down the **SET** button for 2 or

NE

more seconds. You should now see “24hr/12hr” flashing on the bottom left of the screen.

3. Press the **SET** button 4 more times to change the flashing image to a “C” in the lower right of the screen.
4. Use the **ARROW KEYS** to select either Celsius or Fahrenheit, then press the **SET** button.

#### SETTING THE BASE UNIT ALARM

There are two channels for the dual alarm function. To choose one of the alarms:

1. Press the **ALARM** button on the Base Unit to select alarm ((1)).
2. Press the **ALARM** button again to change it to alarm ((2)), or press **ALARM** again to select alarm ((1)).
3. Use the **ARROW KEYS** to set the time of the alarm.
4. When time is set, press the **SET** key to set the alarm.

**NOTE:** Your Base Unit has 2 daily crescendo alarms. If both set, the alarms will sound daily at the set time.

#### TURNING THE ALARM OFF

Once an alarm sounds, you have two options:

Option 1:

1. Press any key except the **SNOOZE** button to turn the alarm off completely.

Option 2:

1. Press the **SNOOZE** button. (The alarm will return on after 8 minutes).

This sensor works as a radio-frequency clock transmitter for the Base Unit. This remote sensor is used to transmit radio frequency signals for the radio-controlled clock, and to measure the temperature and humidity.

#### INSTALLING THE SENSOR

Mount the remote sensor on a flat surface using the recess holes in the back of the unit. (You need to slip on the white wall-mount bracket to get a recess hole).

Additional sensors can be purchased to allow reporting from up to 3 locations.

Place the remote sensor somewhere dry outside so that you can read the temperature and humidity, as well as forecast the weather.

For best results:

- Do not place the sensor in direct sunlight or moisture.
- Position the sensor so that it faces the indoor Base Unit.
- Minimize obstructions, such as doors, walls and furniture.
- To maximize radio frequency reception for the clock, place the remote unit in a location with a clear view to the sky. You may need to experiment with various locations to find the best reception.

**NOTE:** Please note that the remote sensor must be placed within 300 meters of the Base Unit to be fully functional.

#### USING MULTIPLE HANDSETS

Your base unit can synchronize with up to 4 handsets. If you have multiple handsets registered with the base, 2 handsets can make intercom calls.

#### INTERCOM CALLING BETWEEN HANDSETS

1. Press **INT** on your handset.
2. Type in the number of the handset (1-4) that you want to reach.
3. The paged handset will ring. The display of the

paged handset will show "INT CALL".

**NOTE:** To cancel the intercom call, press **TALK**.

#### ANSWERING INTERCOM CALLS

1. Press **TALK** to answer an intercom call.
2. Press **TALK** to end the intercom call.

#### CALL WAITING

If an external call comes in during an intercom conversation, you will hear a call waiting tone.

1. To end an intercom call, press **TALK**.
2. The external line will ring. Press **TALK** again to answer the external call.

#### CALL TRANSFER BETWEEN HANDSETS

You can transfer an external call from one handset to another.

1. During an external phone conversation, press **INT**. Your caller will be put on hold.
2. Type in the handset number (1-4) to which you want the call transferred.
3. The paged handset will ring and "INT CALL" will appear on the display.
4. To answer the call on the paged handset, press **TALK**.
5. Press **TALK** on the paging handset to complete the operation.

**NOTE:** If the other handset does not answer, press **INT** to end the intercom call and get back to the external line. Pressing **TALK** will end both the intercom call and the external call.

#### REGISTERING HANDSETS TO BASE UNIT

The handset and Base Unit shall be factory pre-registered among each other with the identification digital security codes, which are stored into the non-volatile memory. Therefore, the unit should

be in full working order out of the box.

When you purchase an additional handset, you have to register it to the Base Unit in order to make and answer calls.

You can register up to 3 more handsets to make and answer calls via the same Base Unit. Handsets are numbered 1 to 4.

#### REGISTRATION PROCEDURE

To register a new handset:

1. On the handset, press **MENU**.
2. Use the **ARROW KEYS** to select "Handset Setting", then press **MENU**.
3. Select "Registration", then press **MENU**.
4. Select "Yes" then press **MENU**. (You will see the message: "Registering").
5. Press and hold the **PAGE** button on the cradle of the base unit.

**NOTE:** The Base Unit will then send a signal to the handset registering the handset to the Base Unit. Once the registration function has been completed, the handset will return to Standby Mode.

#### DE-REGISTRATION OF HANDSETS

To de-register handsets to the base unit:

1. On the handset, press **MENU**.
2. Use the **ARROW KEYS** to select "Handset Setting," then press **MENU**.
3. Select "Remove HS", then press **MENU**.
4. Use the **ARROW KEYS** to select the handset number, then press **MENU**.
5. Select "Yes," then press **MENU** to confirm the de-registration.

EN

## PLAYING THE GAME (SNAKE)

The weather phone handset contains one game: The Snake Game.

The objective of **snake** is to let it eat as many gemstones as possible without ever hitting the walls or itself.

To play:

1. Press **MENU**.
2. Use the **ARROW KEYS** to select “**Game**”, then press **MENU**.
3. Select “**Snake**” and then press the **MENU** button.
4. Use the **ARROW KEYS** to choose the level of the game, with level 5 being the most difficult, then press **MENU**.

**NOTE:** The game will commence as soon as you press **MENU**.

### PLAYING THE GAME

When the game starts, you will see a snake moving along the screen. To win the game, you will have to direct the snake to the eggs without hitting the wall or letting the snake hit itself.

Using the keypad, press as follows to direct the snake:

BUTTON	ACTION
5	Up
9	Right
8	Down
7	Left
EXIT	End game

**NOTE:** When the snake is moving, you only need to turn the snake to the left or right. There is no need to move the snake forward. If you move the snake backwards, it will hit itself and the game will be over.

## RESETTING YOUR SYSTEM

If you need to reset your system, you will lose any information that you have stored and all settings will return to their default settings.

### SETTING YOUR DEFAULT SETTINGS

To reset your system to the default settings:

1. Press **MENU**.
2. Use the **ARROW KEYS** to select “**Handset Setting**”, then press **MENU**.
3. Use the **ARROW KEYS** to select “**Set Default**”, then press **MENU**.
4. When prompted, select “**Yes**”. You will then hear the double beep to indicate the default settings have been restored.

### YOUR DEFAULT SETTINGS

Your default settings are:

Language:	English
INT melody:	Melody 1
Ring volume:	3
Dial mode:	Tone
Ear volume:	Vol. 1
Phonebook:	Empty
CLID list:	Empty
Redial list:	Empty
Weather:	OFF
Area Code:	—
Time format:	12Hr
Date format:	MM / DD
Temperature format:	Fahrenheit
Time:	12:00 AM

## KEYPAD SYMBOLS

	Capital Letter	Small Letter
1	SPACE 1 _ - + = ^ ~ . , ; : ? !	SPACE 1 _ - + = ^ ~ . , ; : ? !
2	ABC2Ä/EAÄÄÄÄÇ	abc2äæäääääç
3	DEF3ÉÊËËË	def3èéëëë
4	GHI4ÎÏÏ	ghi4îïï
5	JKL5	jkl5
6	MNO6ÖØÓÓÓÖÑ	mno6öøóóóöñ
7	PQRS7	pqrs7
8	TUV8ÚÛÜÜ	tuv8úûüü
9	WXYZ9ÝÞ	wxyz9ýþ
0	0 * # \$ % & / \   ( ) [ ] < >	0 * # \$ % & / \   ( ) [ ] < >
*	Press when editing a name to return to Standby Mode	Press when editing a number to get “**”
#	Press to change between capital and small letter	Press to change between capital and small letter

## SAFTEY AND CARE

### SAFETY PRECAUTIONS

Please observe the following safety precautions when setting up and using this product.

- LCD panel – The LCD panel is made of glass, and may break if the unit is dropped.
- Heat sources – Keep the product away from heat sources, such as radiators, stoves, heaters, and other heat-generating products.
- Water and moisture – Do not use the product in or near water or in high moisture areas, such as a bathroom.

### CARING FOR THIS PRODUCT



To ensure you receive the maximum benefit from using this product, please observe the following guidelines.

- Do not clean any part of your weather phone with benzene, thinner or other solvent chemicals - this may cause permanent damage that is not covered by the guarantee. When necessary, clean it with a damp cloth.
- Keep your weather phone away from hot, humid conditions or strong sunlight.
- Every effort has been made to ensure the highest standards of reliability for your weather phone. However, if something does go wrong, please do not try to repair it yourself-consult your supplier.
- Do not use your weather phone outdoors in the rain, or handle it with wet hands – water can damage electrical equipment.

### CAUTION

- To avoid risk of fire or injury, do not attempt to charge non-rechargeable batteries.
- Replace only batteries with the same or equivalent type recommended by the manufacturer.
- Please dispose of old, defective batteries in an environmentally friendly manner in accordance with the relevant legislation.
- No naked flames, such as lighted candles, should be placed near the apparatus.

**WARNING:** To reduce the risk of fire or shock hazard, do not expose this product to rain or moisture.

	<b>CAUTION</b>	
<b>RISK OF ELECTRIC SHOCK DO NOT OPEN</b>		
<p><b>CAUTION:</b> TO REDUCE THE RISK OF ELECTRICAL SHOCK, DO NOT REMOVE COVER OR BACK. NO USER-SERVICEABLE PARTS INSIDE. REFER SERVICING TO QUALIFIED PERSONNEL.</p>		
<p>The lightning symbol is intended to alert you to the presence of uninsulated dangerous voltage within this product's enclosure that might be of sufficient magnitude to constitute a risk of electric shock. Do not open the product's case.</p> <p>The exclamation mark symbol is intended to inform you that important operating and maintenance instructions are included in the literature accompanying this product.</p>		

## TROUBLESHOOTING

If your weather phone is not working correctly, check the points here before returning it for repair.

Whatever your problem, you should first check that:

- You have installed the Base Unit correctly, and it is plugged into the telephone line and the main power socket.
- Main power is switched on at the socket.
- You have installed the batteries into the handset.

**NEVER** attempt any repairs or adjustments yourself - you could make the problem worse and invalidate your guarantee.

## POTENTIAL ISSUES

Problems with making and answering calls:

**"I cannot make or answer calls."**

- Try moving the handset closer to the Base Unit.
- If this doesn't work, try a different position for the Base Unit - perhaps higher up if possible.
- The battery charge level may be low - place the handset in the charging cradle of the Base Unit to recharge the battery.
- Switch off the power at the main socket, wait a few seconds and then switch the power back on, this may solve the problem.

**"When I press the TALK button, I cannot make a call."**

- Please check if the line is already in use by other handsets registered to the same Base Unit. The **EXT** symbol on your handset would indicate this.

**"When I press keys on my handset, digits appear on the display but I cannot make an outside call."**

- Try moving the handset closer to the Base Unit.

- If this doesn't work, try a different position for the Base Unit. Make sure it is not near any electrical equipment, such as another phone, TV, radio, washing machine, fridge, etc. If possible, position the Base Unit higher up.
- If any other handsets are registered to the same Base Unit, make sure they are not already on a call — you would see the **EXT** symbol on your own handset.
- You may need to change the dial type setting to Pulse dialing if your local telephone exchange does not support Tone dialing.

**"My call was cut off when I went out of range of the Base Unit. Now I cannot use my handset."**

- Please move the handset closer to the Base Unit.

**"I hear a tone while I am using my handset, and the battery symbol on the display is 'empty'."**

- The battery needs to be recharged. Put the handset into the charger; it will take up to 15 hours to be fully charged.

**"I've tried recharging the batteries, but I still get a warning that it is not charged."**

- The batteries probably need to be replaced.

**"The handset does not ring when a call comes in."**

- Check that you have not set the ringing volumes to "off" (see section **Setting the Ring Tone Volume**).

**"The Caller Display function is not working"**

- Please check if you have subscribed to the Caller Display service with your network provider.

**"The Caller Display function is working but the Caller's Name from the phonebook is not displayed even if the same telephone number calls in"**

- You need to store the full telephone number including the STD code into your phonebook memory.



**“I have tried several times to press the TALK button but I cannot make a call and the green LED on the base is not on”**

- Unplug the power adapter at the bottom of the Base Unit, then reconnect the power adapter. Press and hold **PAGE** on the Base Unit until **IN USE** (green LED) is flashing.
- Repeat steps as outlined in the “Registering Handsets to Base Unit” section.

#### PROBLEMS WITH MULTI-HANDSET USE

**“I cannot make a call.”**

- Only one outside call and one intercom call can take place at once. Make sure no other handset user is already on a call.
- Please check if another handset has engaged the line already.

#### OTHER IMPORTANT ITEMS

##### Weight Dimension

Charger: 5.64 ounces (including adaptor)

Charger: 0.19 x 0.35 x 0.35 inches (without adaptor)

Handset: 3.7 ounces (without battery)

Handset: 0.53 x 0.22 x 0.15 inches (H x W x D)

##### WARNING

- The contents of this manual and technical specification are subject to change.
- Due to printing limitation, picture and display showed in this manual may be slightly different from real one.
- The contents of this manual may not be reproduced without the permission of the manufacturer.
- In case a Ni-Cadmium rechargeable battery is used, the draining of its contents should be done in accordance to the law re: special waste material.

#### SPECIFICATIONS

Your phone operates on a 2.4GHz ISM digital Worldwide Digital Cordless Telecommunication (WDCT) platform technology. This product uses 75 regular channels plus 14 channels for substitution when the environment is interfered.

Here are the specifications for your weather phone:

TYPE	DESCRIPTION
Standard	Worldwide Digital Cordless Telecommunication (WDCT)
Frequency range	2.4GHz ISM
Channel bandwidth	0.824MHz
Modulation	GFSK
Speech coding	Adaptive Differential Pulse Code Modulation (ADPCM)
Communication range	Up to 300 meters in open space
Base power supply	Input 120V / 60Hz
Handset charger power supply	Input 120V / 60Hz
Handset power supply	1 pack rechargeable batteries, NiMH 750mAh
Handset battery charging time	15 hours
Operating time	Standby: approximately 5 days Talk: approximately 7 hours
Operating temperature	0°C to 45°C
Storage temperature (outdoor)	-20°C to 60°C
Storage temperature (indoor)	-5°C to 50°C
Humidity range	25% to 90%

## ABOUT OREGONSCIENTIFIC

Visit our website ([www.oregonscientific.com](http://www.oregonscientific.com)) to learn more about Oregon Scientific products such as digital cameras; MP3 players; children's electronic learning products and games; projection clocks; health and fitness gear; weather stations; and digital and conference phones. The website also includes contact information for our customer care department in case you need to reach us, as well as frequently asked questions and customer downloads.

We hope you will find all the information you need on our website, however if you'd like to contact the Oregon Scientific Customer Care department directly, please visit:

[www2.oregonscientific.com/service/support](http://www2.oregonscientific.com/service/support)

OR

Call 949-608-2848 in the US.

For international enquiries, please visit:

<http://www2.oregonscientific.com/about/international/default.asp>

## FCC STATEMENT

This device complies with Part 15 of the FCC Rules. Operation is subject to the following two conditions: (1) This device may not cause harmful interference, and (2) This device must accept any interference received, including interference that may cause undesired operation.

**CAUTION:** To maintain compliance with the FCC's RF exposure guidelines place the base unit at least 20cm from nearby persons.

**WARNING:** Changes or modifications to this unit not expressly approved by the party responsible for compliance could void the user's authority to operate the equipment.

**NOTE:** This equipment has been tested and found to comply with the limits for a Class B digital device, pursuant to Part 15 of the FCC Rules.

22

These limits are designed to provide reasonable protection against harmful interference in a residential installation.

This equipment generates, uses and can radiate radio frequency energy and, if not installed and used in accordance with the instructions, may cause harmful interference to radio communications.

This product meets the applicable Industry Canada technical specifications.

However, there is no guarantee that interference will not occur in a particular installation. If this equipment does cause harmful interference to radio or television reception, which can be determined by turning the equipment off and on, the user is encouraged to try to correct the interference by one or more of the following measures:

- Reorient or relocate the receiving antenna.
- Increase the separation between the equipment and receiver.
- Connect the equipment into an outlet on a circuit different from that to which the receiver is connected.
- Consult the dealer or an experienced radio / TV technician for help.

## DECLARATION OF CONFORMITY

The following information is not to be used as contact for support or sales. Please call our customer service number (listed on our website at [www.oregonscientific.com](http://www.oregonscientific.com), or on the warranty card for this product) for all inquiries instead.

<b>Name:</b>	<b>Oregon Scientific, Inc.</b>
<b>Address:</b>	<b>19861 SW 95th Place, Tualatin, Oregon 97062 USA</b>
<b>Tel No.:</b>	<b>1-800-853-8883</b>
<b>Fax No.:</b>	<b>1-503-684-8883</b>

**Declares that the product:**

**Product No.** : WW338  
- 1 handset  
- 1 base unit  
- 1 sensor  
**Product No.** : WW338-H  
- 2 handsets  
- 1 base unit  
- 1 charger  
- 1 sensor  
**Product Name** : 2.4GHz Digital  
Expandable Cordless  
Phone with Integrated  
Weather Station  
**Manufacturer** : IDT Technology Limited  
**Address** : Block C, 9/F, Kaiser  
Estate, Phase 1,  
41 Man Yue St.  
Hung Hom, Kowloon  
Hong Kong

The WW338HSC - one HS and charger only  
is in conformity with Part 15 of the FCC Rules.  
Operation is subject to the following two  
conditions: 1) this device may not cause harmful  
interference. 2) This device must accept any  
interference received, including interference that  
may cause undesired operation.





© 2004 Oregon Scientific. All rights reserved.  
086-003390-026

