

# User Manual

## For

- I) IBM PC Camera
- II) IBM PC Camera Pro
- II) IBM PC Camera Pro Max



**Release 3.0.0.0**  
**August, 1999**  
**Xirlink, Inc.**

# FCC Warning

This device complies with Part 15 of the FCC Rules. Operation is subject to the following two conditions: (1) this device may not cause harmful interference, and (2) this device must accept any interference received, including interference that may cause undesired operation

## Information to the User

This equipment has been tested and found to comply with the limits for a class B digital device pursuant to part 15 of FCC Rules. These limits are designed to provide reasonable protection against harmful interference in a residential installation. This equipment generates, uses, and can radiate radio frequency energy and, if not installed and used in accordance with the instructions, may cause harmful interference to radio communications. However, there is no guarantee that interference will not occur in a particular installation. If this equipment does cause interference to radio or television reception, which can be determined by turning the equipment off and on, the user is encouraged to try to correct the interference by one or more of the following measures:

- Reorient or relocate the receiving antenna.
- Increase the separation between the equipment and receiver.
- Connect the equipment into an outlet on a circuit different from that to which the receiver is connected.
- Consult the dealer or an experienced radio/TV technician for help and for additional suggestions.

The user may find the following booklet prepared by the Federal Communications Commission, "Protecting Your Privacy: A Guide to the Federal Communications Commission's Privacy Policy." This booklet is available from the U.S. Government Printing Office, Washington, D.C. 20402, Stock No. 004-000-00345-4.

## FCC Warning

The user is cautioned that changes or modifications not expressly approved by the manufacturer could void the user's authority to operate the equipment.

## Copyright Information

Xirlink, Inc independently publishes this product manual. International Business Machines Corporation is not responsible in any way for editorial policy or other contents of this publication.

The following is a registered trademark of International Business Machines Corporation in the United States and worldwide: IBM. Xirlink is an authorized licensee of the IBM Camera. Other company, products and service brand names may be trademarked or have registered trademarks of their respective owners.

Information is subject to change without notice and does not represent a commitment on the part of Xirlink, Inc. The software described is furnished under a licensing agreement. The software may be used or copied only in accordance with the terms of such an agreement. It is against the law to copy the software on any medium except as specifically allowed in the licensing agreement. No part of this document may be reproduced or transmitted in any form or by any means, electronic or mechanical, including photocopying, recording, or information storage and retrieval systems, or translated to another language, for any purpose other than the licensee's personal use and as specifically allowed in the licensing agreement, without the express written permission of Xirlink, Inc.

### Restricted Rights Legend

Use, duplication, or disclosure is subject to restrictions as set forth in contract subdivision (c)(1)(ii) of the Rights in Technical Data and Computer Software Clause 52.227-FAR14.

Material scanned by this product may be protected by governmental laws and other regulations, such as copyright laws. The customer is solely responsible for complying with all such laws and regulations.

### Xirlink's Limited Product Warranty

If you find physical defects in the materials or the workmanship used in making the product described in this document, Xirlink will repair, or at its option, replace, the product at no charge to you, provided you return it (postage prepaid, with proof of your purchase from the original reseller) during the 12-month period after the date of your original purchase of the product.

**THIS IS THE IBM PC CAMERA'S ONLY WARRANTY AND YOUR EXCLUSIVE REMEDY CONCERNING THE PRODUCT. ALL OTHER REPRESENTATIONS, WARRANTIES OR CONDITIONS, EXPRESS OR IMPLIED, WRITTEN OR ORAL, INCLUDING ANY WARRANTY OF MERCHANTABILITY, FITNESS FOR A PARTICULAR PURPOSE OR NON- INFRINGEMENT, ARE EXPRESSLY EXCLUDED. AS A RESULT, EXCEPT AS SET OUT ABOVE, THE PRODUCT IS SOLD "AS IS" AND YOU ARE ASSUMING THE ENTIRE RISK AS TO THE PRODUCTS SUITABILITY TO YOUR NEEDS, ITS QUALITY AND ITS PERFORMANCE,**

**IN NO EVENT WILL XIRLINK BE LIABLE FOR DIRECT, INDIRECT, SPECIAL, INCIDENTAL OR CONSEQUENTIAL DAMAGES RESULTING FROM ANY DEFECT IN THE PRODUCT OR FROM ITS USE, EVEN IF ADVISED OF THE POSSIBILITY OF SUCH DAMAGES.**

All exclusions and limitations in this warranty are made only to the extent permitted by applicable law and shall be of no effect to the extent in conflict with the express requirements of applicable law.

### FCC Radio Frequency Interference Statement

Note: This equipment has been tested and found to comply with the limits for a Class B digital device, pursuant to Part 15 of FCC rules. These limits are designed to provide reasonable protection against harmful interference in a residential installation. This equipment generates, uses, and can radiate radio frequency energy and, if not installed and used in accordance with the instruction guide, may cause harmful interference to radio communications.

However, there is no guarantee that interference will not occur in a particular installation. If this equipment does cause harmful interference to radio or television reception, which can be determined by turning the equipment off and on, the user is encouraged to try to correct the interference by one or more of the following measures:

- \* Reorient or relocate the receiving antenna.
- \* Increase the separation between the equipment and the receiver.
- \* Connect the equipment into an outlet on a circuit different from that to which the receiver is connected.
- \* Consult the dealer or an experienced radio or TV technician for help.

Introduction .....	5
Welcome to IBM PC Camera.....	5
What's In the Box .....	5
What You Need.....	6
A Quick Look at the IBM PC Cameras .....	8
Focus the Camera .....	8
Adjust the Monitor .....	8
Tips for Taking Good Pictures .....	8
Composition .....	8
Lighting.....	9
Video Quality .....	9
A Quick Look at applications.....	10
IBM PC Camera .....	10
IBM Album.....	10
Installation .....	11
Before You Begin.....	11
Registering Your IBM PC Camera.....	11
Installing the Software .....	11
To install the Software.....	11
To Connect the IBM PC Camera .....	16
Getting Help.....	16
IBM PC Camera .....	17
To open the Camera window .....	17
To transpose the image .....	17
To open the Video Album.....	19
Adjusting the Video.....	19
To display the video settings.....	19
To change the various options.....	19
Camera Options.....	20
Capture Control.....	20
Video Mail .....	21
Mail Agent .....	22
Video Quality .....	23
Video Format .....	26
About .....	27
IBM Album .....	28
To open the Video Album:.....	28
Playing Back an exe file from Album .....	29
Playing Back an avi file from Album .....	29
Seeing a Snapshot.....	30
Sending IBM Mail, captured video clip or Snapshot with E-mail: .....	31
Setting Album Options .....	31
The IBM Album's Menu Commands and Tool Bar .....	33
File Menu.....	33
View Menu.....	34
Camera Menu.....	34
Help Menu .....	35
The Video Album Tool Bar .....	35
The IBM Album with Third Party Software .....	36
Imaging for Windows .....	36

	4
Video Impression.....	40
IBM PerfectPhoto .....	43
Frequently Asked Questions .....	47
Troubleshooting.....	52
Appendix A: Technical Specifications .....	60
Appendix B: How to send out IBM Mail using other e-mail servers.....	64
IBM Mail with America Online 4.0.....	64
Create IBM Mail .....	64
Attach and send your IBM Mail.....	64
IBM Mail with CompuServe 2000:.....	66
Create IBM Mail .....	66
Attach and send your IBM Mail.....	66
IBM Mail with Netscape 4.6.....	67
Use Attached File .....	67
Use MAPI Support .....	68
Use MAPI Support .....	69
IBM Mail with Eudora 4.2:.....	70
Use Attached File .....	70
Use MAPI Support .....	71
Eudora 3.0 supports MAPI, You can use send button on the IBM Mail program to launch the Eudora. Make sure to set Eudora MAPI server.....	71
IBM Mail with Outlook Express 5 .....	72
Use MAPI Support .....	72
IBM Mail with Microsoft Outlook 97 .....	72
Appendix C: How to Videoconference with NetMeeting.....	73
NetMeeting 2.11 .....	73
NetMeeting 3.01 .....	73
How to determine your IP Address: .....	74

## Introduction

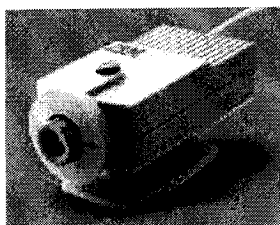
### Welcome to IBM PC Camera

The IBM PC Camera, with its high-quality PC Camera and software now makes video mail and videoconferencing easy. Whether you're sending video mail, videoconferencing over the Internet with someone in another part of the world or on your business' network to a colleague in a building across town, the IBM PC Camera delivers clear video and audio to your computer.

Using the IBM PC Camera application is especially effective for larger companies located in several buildings or cities. Instead of trudging to another building or hopping on a plane and wasting a day in the air, you can simply capture video mail and send it out or videoconference and get the job done in a fraction of the time. A video mail message or videoconference with the IBM PC Camera is almost like being there in person.

### What's In the Box

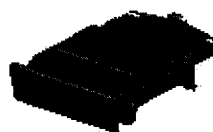
Before you start the installation process, please check the contents of the box to make sure that all parts are included. There should be one IBM PC camera with USB cable and software CD. Two camera clips have also been included. If any items are missing or you notice any damage, contact the dealer where you purchased the product.



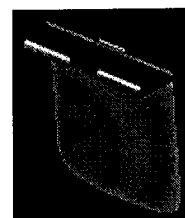
**IBM PC Camera Pro/  
Pro Max**



**Software CD**

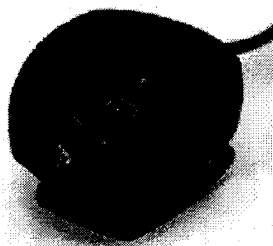


**Laptop Screen Clip**



**Monitor Attachment  
Clip**

OR



## What You Need

### Hardware

An IBM PC (or 100% compatible) with a Pentium processor that operates at 166 MHz or faster. The MMX Pentium processor is recommended, but not required, and the faster the MHz operating speeds, the better.

16 Megabytes (MB) or more of internal memory (RAM).

8 MB of hard disk space

One available USB port on your computer to plug in the camera.

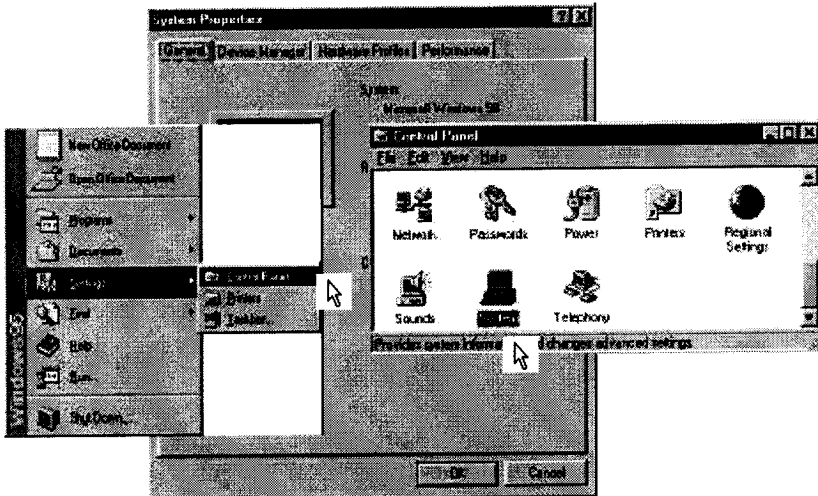
A SVGA monitor. See the user's manual for your computer if you aren't sure about its hardware features.

### Software

Microsoft Windows 98 or Windows 2000.

- Microsoft Internet Explorer (version 5.0 or later) and Microsoft NetMeeting (version 3 or later). Both Microsoft Internet Explorer and Microsoft NetMeeting are part of Windows OS. If your computer includes a complete installation of Windows OS, Internet Explorer and NetMeeting are already installed.

- ◆ NOTE: To find the version number of your Windows operating system, select Settings from the Start menu, open Control Panel, and double-click on the System icon. The System Properties dialog box shows the version number.
- ◆ NOTE: If you have a problem using our camera, please go to the Device Manager tab of the System Properties dialog box, to determine if Universal Serial Bus controller is configured correctly. You should have both an USB host controller and an USB root hub listed under the Universal Serial Bus controller.



- ◆ To find the version number of NetMeeting or Internet Explorer, open the application and then choose About (the application) from that application's Help menu.
- ◆ TIP: If you don't have Microsoft Internet Explorer or NetMeeting, you can download them from the Internet at: <http://www.microsoft.com/download>

#### IBM Mail

- You need to have an e-mail program installed, such as Microsoft Outlook, Microsoft Outlook Express, Netscape Mail, Eudora, Lotus CC Mail, etc.

#### Standard Phone Line

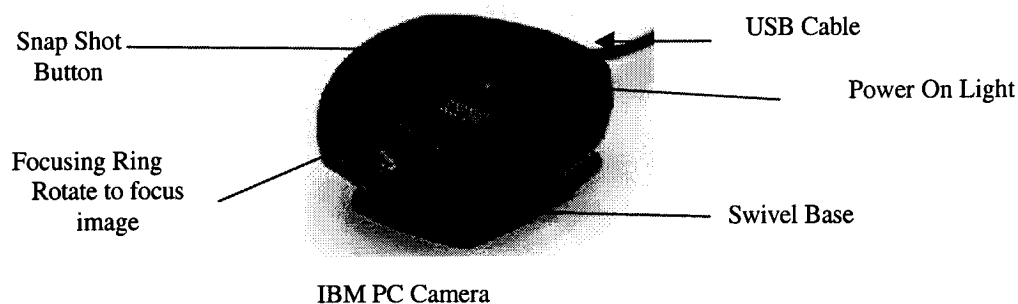
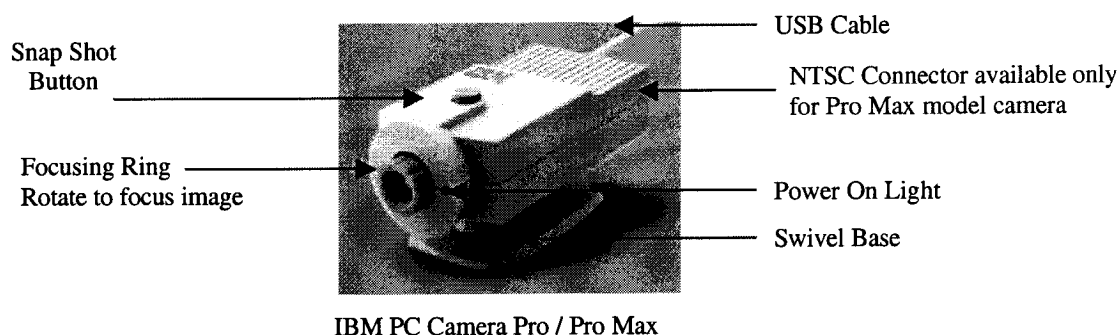
- Connection to the Internet through a standard telephone line to videoconference with Microsoft NetMeeting. You need to connect to your Internet Service Provider (ISP) first.

#### Recipient or Participant Requirements

- For IBM Mail – the sender needs a compatible e-mail system that allows attachment, but no additional hardware or software is needed at the recipient's end.
- For Internet videoconferencing – virtually any videoconferencing software that meets the ITU H.323 standard (please refer to the software's manual to see if it meets the H.323 standard).



## A Quick Look at the IBM PC Cameras



### Focus the Camera

You focus the camera with the focus ring.

### Adjust the Monitor

For best results you may need to adjust the computer monitor settings.

- 1 With Windows running, double-click on My Computer icon.
- 2 Double-click on the Control Panel icon.
- 3 Double-click on the Display icon.
- 4 Click on the Settings tab.
- 5 From the color palette field, select either High (16-bit), True (24-bit), or True (32-bit) color.
- 6 Click OK.

## Tips for Taking Good Pictures

By following these simple tips, you can take quality videos and pictures with the IBM PC Camera.

### Composition

- Aim the camera so the subject is in the center of the image.
- Put the camera on a flat, steady surface. If you have to hold the camera during the shot, hold it still when shooting.



## Appendix A: Technical Specifications

### IBM PC Camera 300 USB PC Camera

#### Features Summary:

- 1/5" CMOS Sensor

#### Digital video camera:

- 30 fps CIF(352x288) video frame rates.
- Patent pending ViCE video compression engine, delivers astounding compression
- Push button for easy still image capture
- Adjustable focus lens
- 360° swivel base with +/- 20° movement
- Drivers support Win98 and Win2000

<b>Sensor</b>	1/5" CMOS Sensor
<b>Color</b>	24-bit true color: Up to millions of colors
<b>Image Resolution</b>	352 x 288
<b>Lens</b>	Infrared filter lens coating
<b>Field of View</b>	42 degrees
<b>Focus Distance</b>	5 mm to infinite
<b>Lens Type</b>	5.6 mm, f2.0
<b>Power</b>	USB interface supplies power
<b>Dimension</b>	1.5" (H)x 2.5"(W) x 2.8" (D)

**Host System Requirements**

Minimum operating platform is a 166 MHz  
Pentium® MMX® with USB

**Real-time Video**

CIF at 30 fps

**Software Bundle**

IBM PC Camera Software, PhotoStudio v2.0,  
VideoImpression v1.5, PhotoPrinter v2.0,  
PhotoFantasy v2.0, and Microsoft Netmeeting