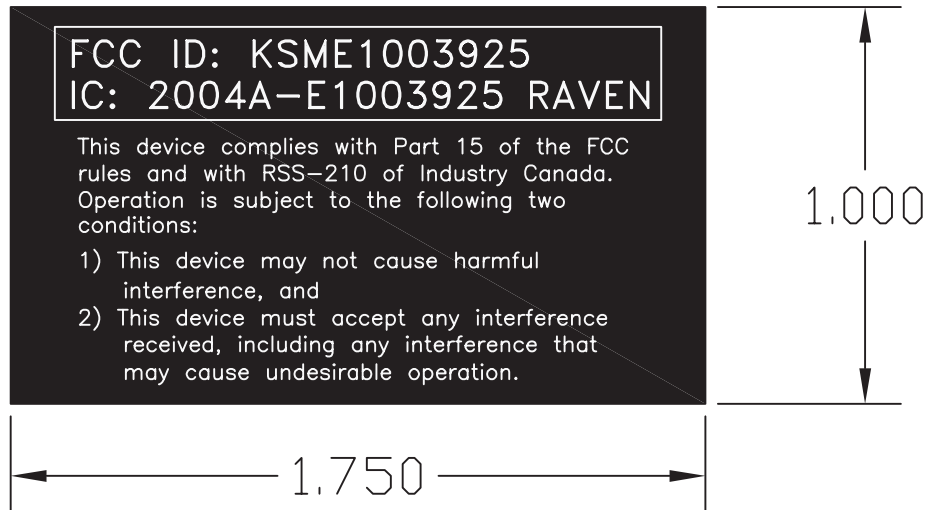


REVISION RECORD						
REV.	DECO PRO#	DECO LTR/#	DESCRIPTION	REVISED BY	DATE	APVD
A			ISSUE DRAWING	JG	06/27/06	TMD



SCALE 2/1

COLORS:

BACKGROUND: BLACK

COPY: WHITE

MATERIAL:

PRESSURE SENSITIVE VINYL SUPPLIED ON ROLLS.

ADHESIVE TO BE OF A PERMANENT TYPE & MUST

HOLD LABEL SECURE TO A TEXTURED PLASTIC SURFACE.



RoHS STATEMENT: PART MUST BE MANUFACTURED TO COMPLY WITH THE DIRECTIVE 2002/95/EC OF THE EUROPEAN PARLIAMENT AND THE COUNCIL OF 27 JANUARY 2003 ON THE RESTRICTION OF THE USE OF CERTAIN HAZARDOUS SUBSTANCES IN ELECTRICAL AND ELECTRONIC EQUIPMENT.

		ELECTRONIC SYSTEMS DIVISION DESIGN ENGINEERING DEPT. ST. LOUIS, MO 63045		SIZE A
TITLE LBL FCC XMITTER 1.0X1.5 310 MHz 4002 ROHS				
CUSTOMER		ENG DWG NO. E1003876		ENG REV A
CUST. PART NO.		SCALE NONE	DRAWN BY JG	CHECKED BY TMD
REV		ORIGINAL DATE 06/27/06	SHEET 1 OF 1	

PROPRIETARY INFORMATION

NOTICE: THIS DOCUMENT AND ANY INFORMATION DISCLOSED HEREIN WAS ORIGINATED BY AND IS THE PROPERTY OF RAVEN INDUSTRIES, INC., ELECTRONIC SYSTEMS DIVISION. THIS INFORMATION, IN WHOLE OR EXTRACTS, MAY NOT BE PUBLISHED, REPRODUCED, DISCLOSED OR OTHERWISE DISSEMINATED WITHOUT THE EXPRESS AUTHORIZATION OF RAVEN INDUSTRIES, INC.

UNLESS OTHERWISE SPECIFIED

DIMENSIONS ARE IN INCHES FRACTIONS $\pm \frac{1}{64}$
 TWO DECIMAL PLACES $\pm .03$ ANGLES $\pm 2^\circ$
 THREE DECIMAL PLACES $\pm .005$

DUT (bottom)

