

TDR

Proprietary data. All rights reserved.  
Siemens confidential.

Piece	Identno (Rgb)	Identno (ext)(ext)	Title	Value/Type	Partreference	Geometry
1	0009.152.201		WIDERSTAND/5%	IK	R13	0603
4	0009.152.209		WIDERSTAND/5%	2K2	R104, R105, R204, R205	0603
1	0009.152.226		WIDERSTAND/5%	10K	R1	0603
1	0009.152.229		WIDERSTAND/5%	13K	R211	0603
3	0009.152.236		WIDERSTAND/5%	27K	R100, R200, R210	0603
4	0009.153.030		WIDERSTAND/5%	510R	R101, R102, R201, R202	1206
3	0009.153.036		WIDERSTAND/5%	330R	R3, R206, R214	1206
1	0009.153.155		WIDERSTAND/5%	15R	R5	1206
6	0009.153.179		WIDERSTAND/5%	130R	R6, R7, R8, R9, R10, R11	1206
1	0009.153.201		WIDERSTAND/5%	IK0	R4	1206
2	257636.20.01		WIDERSTAND/5%	10n	C210, C213	0805
1	657632.20.97		KONDENSATOR/50V/10%	4u7	C6	TAKOB
1	657736.20.54		KOND-EL-TA/16V/10%	100n	C100	0805
1	659436.20.16		KONDENSATOR/50V/10%	180p	C15	0603
2	659436.20.41		KONDENSATOR/50V/2%	2n2	C105, C205	0603
1	659436.20.42		KONDENSATOR/50V/10%	100p	C207	0603
2	659436.20.58		KONDENSATOR/50V/10%	470p	C103, C203	0603

Comment:

ATBE AS T11

OFFIZIELLE KOPIE

AT S... T42197 DR

ECO No: 10077

Date: 4.11.97

DF 10077

153648

1998 23.01.98

State: a

State: b

State: c

Siemens AG  
Automotive Regensburg

Name: Oe/tec

Date: 10.12.1997

Editor: Oe/tec

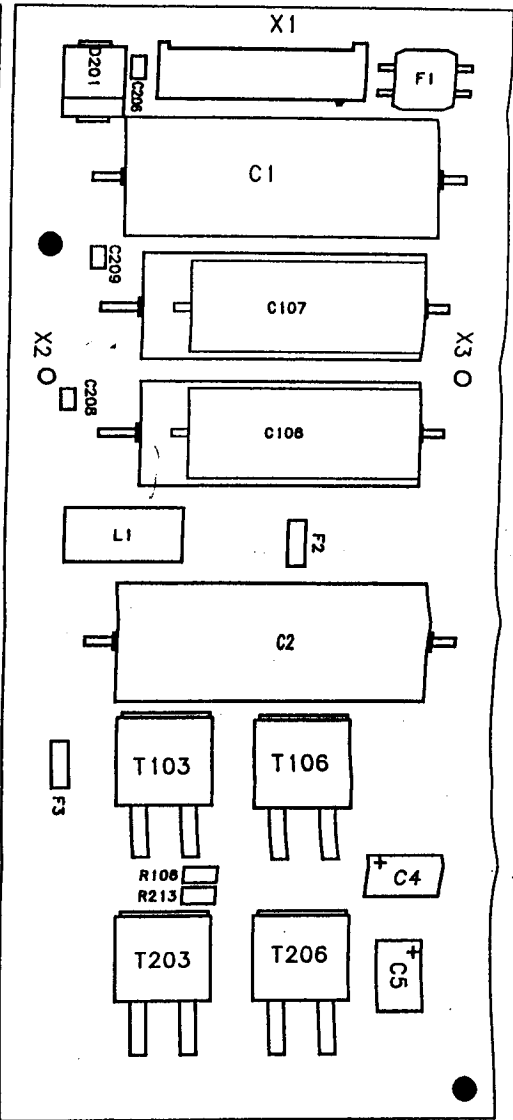
Check:

Name: Oe/tec

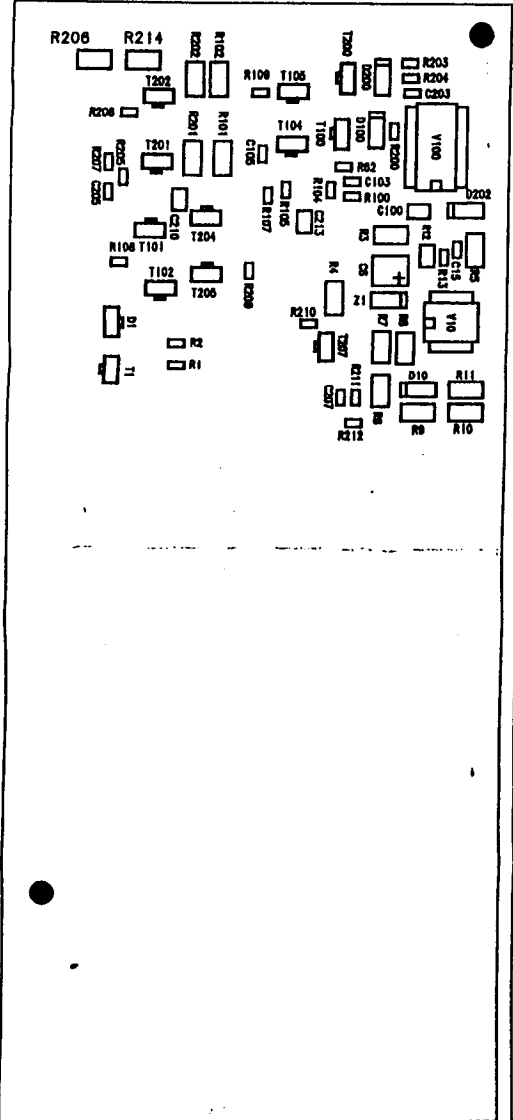
Oe/tec

Oe/tec

Bill of material  
Fahrertuer rechts komplett bestueck



Bestückung Oberseite



Bestückung Unterseite

ATBE AS 711  
ATSE 428 TDR

13. Mai 1998

OFFIZIELLE NOTIZ

1	453 648	23.04.98	De/Be		
2	10				
3					
4					
5					
6					
7					
8					
9					
10					
11					
12					
13					
14					
15					
16					
17					
18					
19					
20					
21					
22					
23					
24					
25					
26					
27					
28					
29					
30					
31					
32					
33					
34					
35					
36					
37					
38					
39					
40					
41					
42					
43					
44					
45					
46					
47					
48					
49					
50					
51					
52					
53					
54					
55					
56					
57					
58					
59					
60					
61					
62					
63					
64					
65					
66					
67					
68					
69					
70					
71					
72					
73					
74					
75					
76					
77					
78					
79					
80					
81					
82					
83					
84					
85					
86					
87					
88					
89					
90					
91					
92					
93					
94					
95					
96					
97					
98					
99					
100					

Siemens AG  
 Leiterplatte Fondtuer rechts  
 komplett bestueckt  
 659787.76.08

Proprietary data. All rights reserved.  
Siemens confidential.

Piece	Identno (Rgb)	Identno (ext)(ext)	Title	Value/Type	Partreference	Geometry
// mechanic parts:						
1	659787.21.01		Leiterplatte		A1	
// electronic parts (topside):						
1	659787.76.12		Kabel Antenne Fondtuer rechts	EINZEL KONTAKT	X1	CONN5X1
4	659631.20.47		DIODE-SCHOTTKY	MBR340T3	D201	DO214AB
2	659460.20.83		MOSFET-N	BUZ104	T103, T106, T203, T206	TO263_3
2	0009.153.036		WIDERSTAND/5%	330R	R106, R213	T206
2	657632.20.92		KONDENSATOR/35V/20%	6u8	C4, C5	TAKOD
2	657636.20.47		KONDENSATOR/50V/5%	1n	C208, C209	0805
1	657736.20.54		KONDENSATOR/50V/10%	100n	C206	0805
2	659439.20.54		KONDENSATOR	6u8	C1, C2	31_5X12RM37_5
2	659439.20.74		KONDENSATOR	15n	C1, C2	29X11RM35M27_5
1	657637.20.95		INDUKTIVITAET	15uH	L1	DROSSEL3
2	659437.20.24		INDUKTIVITAET	BLM41P600	F2, F3	I806
1	659437.20.25		INDUKTIVITAET	ZJYS51R5-ZPT	F1	CAN_DR
// electronic parts (bottomside):						
1	658167.20.59		IC-HCMOS	74HC00 POWER	V100	SO14
1	659631.20.25		IC-OPTOKOPPLER	HCPL0601	V10	SO8_H
1	257331.20.93		DIODE-SI	BAV99	D1	SOT23_T2
1	657520.20.06		DIODE-SI	BAV103	D202	MINIMELF_D
1	659231.20.39		DIODE-SI	LS4148	D10	MINIMELF_D
2	659631.20.18		DIODE-SCHOTTKY	LL103B	D100, D200	MINIMELF_D
1	659231.20.93		DIODE-Z	ZMM5V6	Z1	MINIMELF_D
4	657560.20.51		TRANS-PNP	BC807C	T102, T105, T202, T205	SOT23_T2
8	657560.20.53		TRANS	BC817C	T1, T100, T101, T104, T200, T201, T204, T207	SOT23_T2
1	0009.151.196		WIDERSTAND/5%	680R	R12	0805
1	0009.152.163		WIDERSTAND/5%	33R	R2	0603
4	0009.152.167		WIDERSTAND/5%	47R	R108, R109, R208, R209	0603
2	0009.152.176		WIDERSTAND/5%	100R	R107, R207	0603
2	0009.152.184		WIDERSTAND/5%	220R	R62, R203	0603
1	0009.152.195		WIDERSTAND/5%	620R	R212	0603

ATBE AS T11  
AT BE AS T11  
OFFIZIELLE KONTAKT  
Date: 23.01.98

Date: 10.12.1997  
Name: Oe/tec

Editor: Oe/tec  
Check:

ECO.No: 153648  
State: Q  
Siemens AG  
Automotive Regensburg

Bill of material  
Fondtuer rechts komplett bestueckl

TDR

TDR

Proprietary data. All rights reserved.  
Siemens confidential.

Piece	Identno (Rgb)	Identno (ext)(ext)	Title	Value/Type	Partreference	Geometry
1	0009.152.201		WIDERSTAND/5%	1K	R13	0603
4	0009.152.209		WIDERSTAND/5%	2K2	R104, R105, R204, R205	0603
1	0009.152.226		WIDERSTAND/5%	10K	R1	0603
1	0009.152.229		WIDERSTAND/5%	13K	R211	0603
3	0009.152.236		WIDERSTAND/5%	27K	R100, R200, R210	0603
4	0009.153.030		WIDERSTAND/5%	510R	R101, R102, R201, R202	1206
3	0009.153.036		WIDERSTAND/5%	330R	R3, R206, R214	1206
1	0009.153.155		WIDERSTAND/5%	15R	R5	1206
6	0009.153.179		WIDERSTAND/5%	130R	R6, R7, R8, R9, R10, R11	1206
1	0009.153.201		WIDERSTAND/5%	1K0	R4	1206
2	257636.20.01		KONDENSATOR/50V/10%	10n	C210, C213	0805
1	657632.20.97		KOND-EL-TA/16V/10%	4u7	C6	TAKOB
1	657736.20.54		KONDENSATOR/50V/10%	100n	C100	0805
1	659436.20.16		KONDENSATOR/50V/2%	180p	C15	0603
2	659436.20.41		KONDENSATOR/50V/10%	2n2	C105, C205	0603
1	659436.20.42		KONDENSATOR/50V/2%	100p	C207	0603
2	659436.20.58		KONDENSATOR/50V/10%	470p	C103, C203	0603

ATBE AS T11

AT BE AS T11	Date: 23.01.98
OFFIZIUM KOLLEKTOR	

Date: 10.12.1997  
Editor: [Signature]  
Check:

Name: [Signature]  
Oe/tec

Bill of material  
Fonduer rechts komplett bestueckt

State: a 1536181

Siemens AG  
Automotive Regensburg



TDR

Proprietary data. All rights reserved.  
Siemens confidential.

Piece	Identno (Rgb)	Identno (ext)(ext)	Title	Value/Type	Partreference	Geometry
// mechanic parts:						
1	659787.21.01		Leiterplatte		A1	
// electronic parts topside:						
1	659787.76.11		Kabel Antenne Fondtuer links	EINZEL_KONTAKT	X1	CONN5X1
1	659631.20.47		DIODE-SCHOTTKY	MBRS340T3	D201	DO214AB
4	659460.20.83		MOSFET-N	BUZ104	T103, T106, T203, T206	TO263_3
2	0009.153.036		WIDERSTAND/5%	330R	R106, R213	T206
2	657632.20.92		KONDENSATOR/35V/20%	6u8	C4, C5	TAKOD
2	657636.20.47		KONDENSATOR/50V/5%	1n	C208, C209	0805
1	657736.20.54		KONDENSATOR/50V/10%	100n	C206	0805
2	659439.20.54		KONDENSATOR	6u8	C1, C2	31_5X12RM37_5
2	659439.20.74		KONDENSATOR	15n	L1	29X11RM35M27_5
1	657637.20.95		INDUKTIVITAET	1uH	C106, C107	DROSSEL3
2	659437.20.24		INDUKTIVITAET	BLM41P600	F2, F3	1806
1	659437.20.25		INDUKTIVITAET	ZJY551R5-ZPT	F1	CAN_DR
// electronic parts bottomside:						
1	658167.20.59		IC-HCMOS	74HC00_POWER	V100	SO14
1	659631.20.25		IC-OPTOKOPPLER	HCPL0601	V10	SO8_H
1	257531.20.93		DIODE-SI	BAV99	D1	SOT23_T2
1	657520.20.06		DIODE-SI	BAV103	D202	MINIMELF_D
1	659231.20.39		DIODE-SI	LS4148	D10	MINIMELF_D
2	659631.20.18		DIODE-SCHOTTKY	LL103B	D100, D200	MINIMELF_D
1	659231.20.93		DIODE-Z	ZMM5V6	Z1	MINIMELF_D
4	657560.20.51		TRANS-PNP	BC807C	T102, T105, T202, T205	SOT23_T2
8	657560.20.53		TRANS	BC817C	T1, T100, T101, T104, T200, T201, T204, T207	SOT23_T2
1	0009.151.196		WIDERSTAND/5%	680R	R12	0805
1	0009.152.163		WIDERSTAND/5%	33R	R2	0603
4	0009.152.167		WIDERSTAND/5%	47R	R108, R109, R208, R209	0603
2	0009.152.176		WIDERSTAND/5%	100R	R107, R207	0603
1	0009.152.184		WIDERSTAND/5%	220R	R62, R203	0603
1	0009.152.195		WIDERSTAND/5%	620R	R212	0603

ATBE AS T11

ECO	DF 10677	OFF	AT \$	Date	10.12.1997
State: a	1536	OFF	DATE	Name:	Oe/tec
State: b	1536	OFF	DATE	Editor:	Oe/tec
Siemens AG	Automotive Regensburg	OFF	DATE	Check:	

Bill of material  
Fondtuer links komplett bestueckt

TDR

Proprietary data. All rights reserved.  
Siemens confidential.

Piece	Identno (Rgb)	Identno (ext)(ext)	Title	Value/Type	Partreference	Geometry
1	0009.152.201		WIDERSTAND/5%	1K	R13	0603
4	0009.152.209		WIDERSTAND/5%	2K2	R104, R105, R204, R205	0603
1	0009.152.226		WIDERSTAND/5%	10K	R1	0603
1	0009.152.229		WIDERSTAND/5%	13K	R211	0603
3	0009.152.236		WIDERSTAND/5%	27K	R100, R200, R210	0603
4	0009.153.030		WIDERSTAND/5%	510R	R101, R102, R201, R202	1206
3	0009.153.036		WIDERSTAND/5%	330R	R3, R206, R214	1206
1	0009.153.155		WIDERSTAND/5%	15R	R5	1206
6	0009.153.179		WIDERSTAND/5%	130R	R6, R7, R8, R9, R10, R11	1206
1	0009.153.201		WIDERSTAND/5%	1K0	R4	1206
2	257636.20.01		KONDENSATOR/50V/10%	10n	C210, C213	0805
1	657632.20.97		KOND-EL-TA/16V/10%	4u7	C6	TAKOB
1	657736.20.54		KONDENSATOR/50V/10%	100n	C100	0805
1	659436.20.16		KONDENSATOR/50V/2%	180p	C15	0603
2	659436.20.41		KONDENSATOR/50V/10%	2n2	C105, C205	0603
1	659436.20.42		KONDENSATOR/50V/2%	100p	C207	0603
2	659436.20.58		KONDENSATOR/50V/10%	470p	C103, C203	0603

ATBE AS T11

AT SE	Date:	13.12.1997
12.12.1997	Date:	23.01.98
OFFIZIE	Name:	DF 1067
LE K	Oe/tec	153648
LE	Oe/tec	

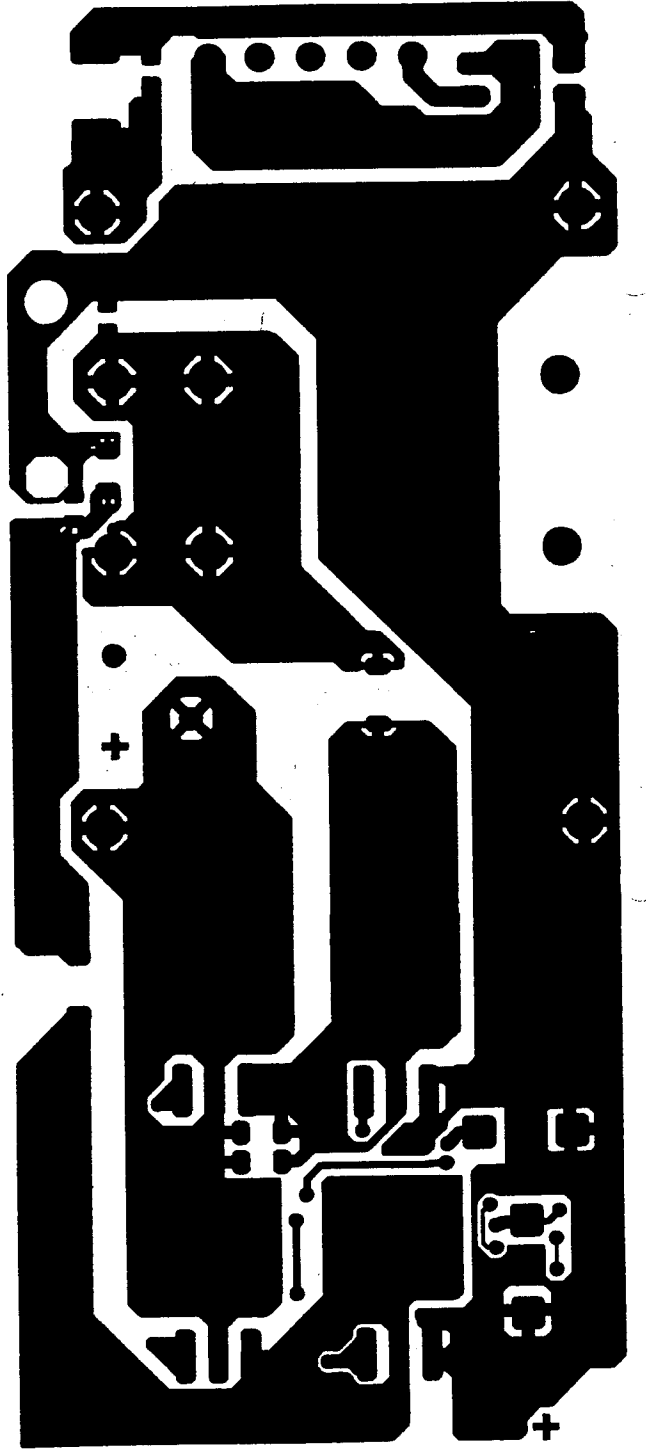
Date: 10.12.1997  
Name: Oe/tec  
Editor: Oe/tec  
Check: Oe/tec

Bill of material  
Fonduer links komplett bestueckt

Siemens AG  
Automotive Regensburg



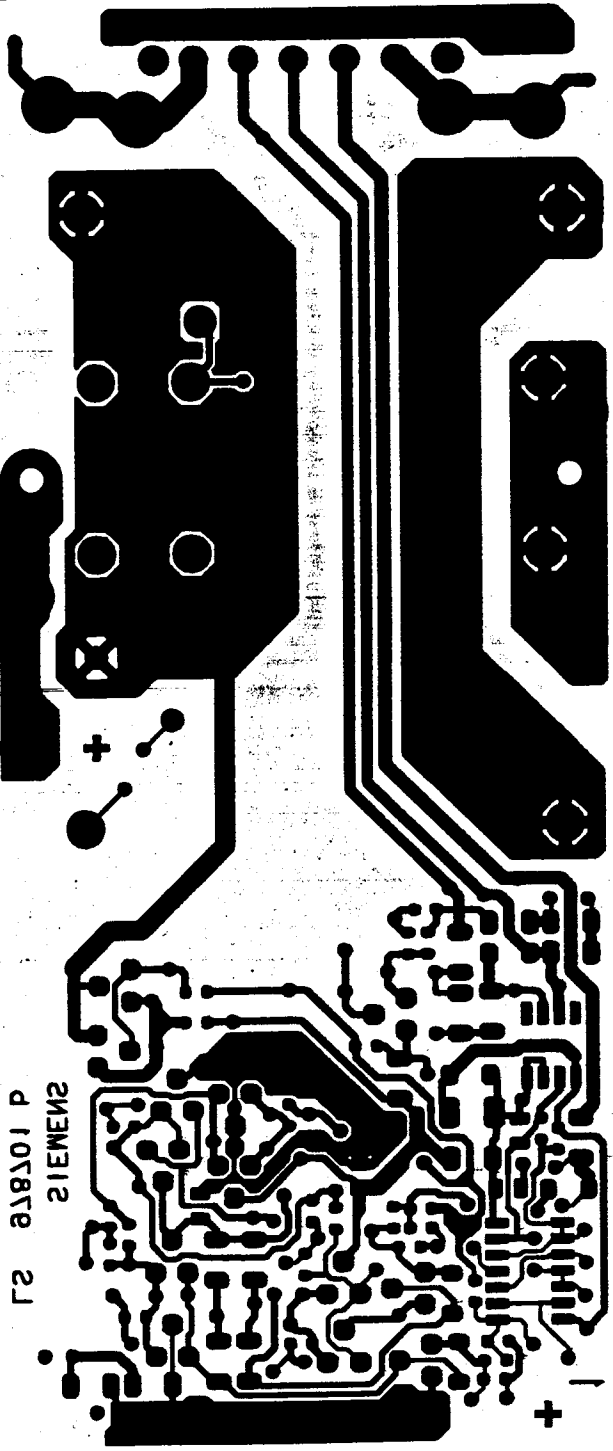




++

Siemens 659787.21.01 b

Bs



++

Siemens 105879

21

SIEMENS  
P 105879 21