

TDR

Proprietary data. All rights reserved.  
Siemens confidential.

Piece	Identno (Rqgb)	Identno (ext)(ext)	Title	Value/Type	Partreference	Geometry
1	0009.152.217		WIDERSTAND/5%	4K7	R412	0603
9	0009.152.226		WIDERSTAND/5%	10K	R408, R409, R418, R431, R500, R508, R512, R606, R618	0603
5	0009.152.251		WIDERSTAND/5%	100K	R100, R101, R303, R434, R439	0603
2	0009.153.267		WIDERSTAND/5%	470K	R611, R623	1206
3	0009.165.651		WIDERSTAND/1%	33K2	R104, R111, R114	0603
2	657632.20.89		KOND-EL-TA/25V/10%	470h	C116, C118	TAKOA
1	657632.20.92		KONDENSATOR/35V/20%	6u8	C113	TAKOD
2	657636.20.47		KONDENSATOR/50V/5%	1h	C614, C615	0805
1	657639.20.22		KOND-EL-TA/6.3V/20%	100u	C117	TAKOD
2	657736.20.18		KONDENSATOR/50V/5%	33p	C528, C529	0603
5	657736.20.20		KONDENSATOR/50V/5%	100p	C413, C501, C503, C505, C507	0603
23	657736.20.54		KONDENSATOR/50V/10%	100n	C100, C102, C104, C107, C204, C416, C432, C500, C502, C504, C506, C508, C509, C510, C511, C512, C513, C518, C519, C520, C521, C523, C525	0805
1	659232.20.39		KONDENSATOR/35V/20%	220u	C101	ECR8_7X3_8X13
12	659436.20.54		KONDENSATOR/50V/10%	10n	C401, C402, C403, C404, C405, C406, C407, C408, C410, C412, C428, C445	0603
1	659436.20.58		KONDENSATOR/50V/10%	470p	C431, C119	0603
2	659439.20.13		KONDENSATOR/35V/10%	15u	C110, C115	TAKOD
1	659439.20.22		KONDENSATOR/16V/10%	47u	C115	TAKOD
2	659439.20.54		KONDENSATOR/63V/10%	6u8	C600, C601	CA31_5X12X37
2	659439.20.55		KONDENSATOR/630V/2%	33n	C608, C613	29X11RM35M_
1	657637.20.10		Induktivitaet	51uH	L300	CAN DR
1	657637.20.95		INDUKTIVITAET	1uH	L600	DROSSEL3
2	659437.20.24		FILTER	BLM41P600SPTM	L601, L602	1806
1	659437.20.25		FILTER	ZJYSS1R5-ZPT	L100	CAN DR
1	659437.20.26		INDUKTIVITAET	390uH	L101	TRAF02
// electronic parts bought						
4	654167.20.11		IC-HCMOS	74HC164_POWER	V502, V503, V504, V513	SO14

ATSE T42 R TDR  
 4.03.1998  
 04.12.97  
 26.11.98

Name: *Wj* Oe/tec  
 Date: 4.12.1997  
 Editor: *Wj* Oe/tec  
 Check:

Bill of material  
 Keyless\_Go\_StG

Siemens AG  
 Automotive Regensburg

TDR

Proprietary data. All rights reserved.  
Siemens confidential.

Piece	Identno (Rgb)	Identno (ext)(ext)	Title	Value/Type	Partreference	Geometry
1	654167.20.38		IC-HCMOS	74HC4024_POWER	V501	SO14
1	656167.20.78		IC-HCMOS	74HC03	V202	SO14
1	657667.20.45		IC-HCMOS	74HC151	V400	SO16
1	657667.20.74		DC/DC-CONVERTER	MC33063AD	V102	SO8
1	657767.20.99		OPV	LM2904	V200	SO8
2	658167.20.59		IC-HCMOS	74HC00_POWER	V600, V601	SO14
1	658167.20.76		IC-HCMOS	74HC08_POWER	V509	SO14
1	658167.20.99		IC-HCMOS	74HC85_POWER	V506	SO16
2	659467.20.66		5V Voltage Regulator	TLE4269G	V100, V103	SO8
1	659131.20.40		DIODE-SI	BAV70	D104, D403	SOT23_D2
2	659131.20.41		DIODE-SI	BAW56	D200, D201	SOT23_D2
6	659231.20.39		DIODE-SI	LS4148	D101, D105, D501, D502, D503, D504	MINIMELF_D
4	659631.20.18		DIODE-SCHOTTKY	LL103B	D600, D601, D602, D603	MINIMELF_D
1	659131.20.43		DIODE-Z	BZX84C6V2	Z103	SOT23_D2
6	657560.20.51		TRANS-PNP	BC807C	T400, T402, T603, T605, T611, T613	SOT23_T2
9	657560.20.53		TRANS	BC817C	T102, T600, T601, T602, T604, T608, T609, T610, T612	SOT23_T2
4	0009.152.155		WIDERSTAND/5%	15R	R501, R502, R503, R504	0603
4	0009.152.167		WIDERSTAND/5%	47R	R605, R610, R617, R622	0603
4	0009.152.184		WIDERSTAND/5%	220R	R601, R607, R613, R619	0603
2	0009.152.201		WIDERSTAND/5%	1K	R600, R612	0603
7	0009.152.209		WIDERSTAND/5%	2K2	R214, R414, R416, R602, R608, R614, R620	0603
15	0009.152.217		WIDERSTAND/5%	4K7	R103, R400, R401, R402, R403, R404, R405, R406, R407, R410, R411, R436, R437, R438	0603
4	0009.152.221		WIDERSTAND/5%	6K8	R419, R420, R421, R422	0603
7	0009.152.226		WIDERSTAND/5%	10K	R203, R204, R448, R450, R509, R510, R511	0603
4	0009.152.242		WIDERSTAND/5%	47K	R206, R207, R208, R209	0603
19	0009.152.251		WIDERSTAND/5%	100K	R102, R205, R302, R417, R423, R424, R425, R426, R427, R428, R429, R430, R432, R433, R440, R443, R447, R449, R453	0603

State: a	01/20/767	04.12.97	ATSE T42 R TDR
State: b	5904	26.11.98	OFFIZIELLE
Siemens AG			
Automotive Regensburg			

Date: 4.12.1997  
Editor: *WJ*  
Check:

Name: Oe/tec  
Oe/tec

Bill of material  
Keyless\_Go\_STG

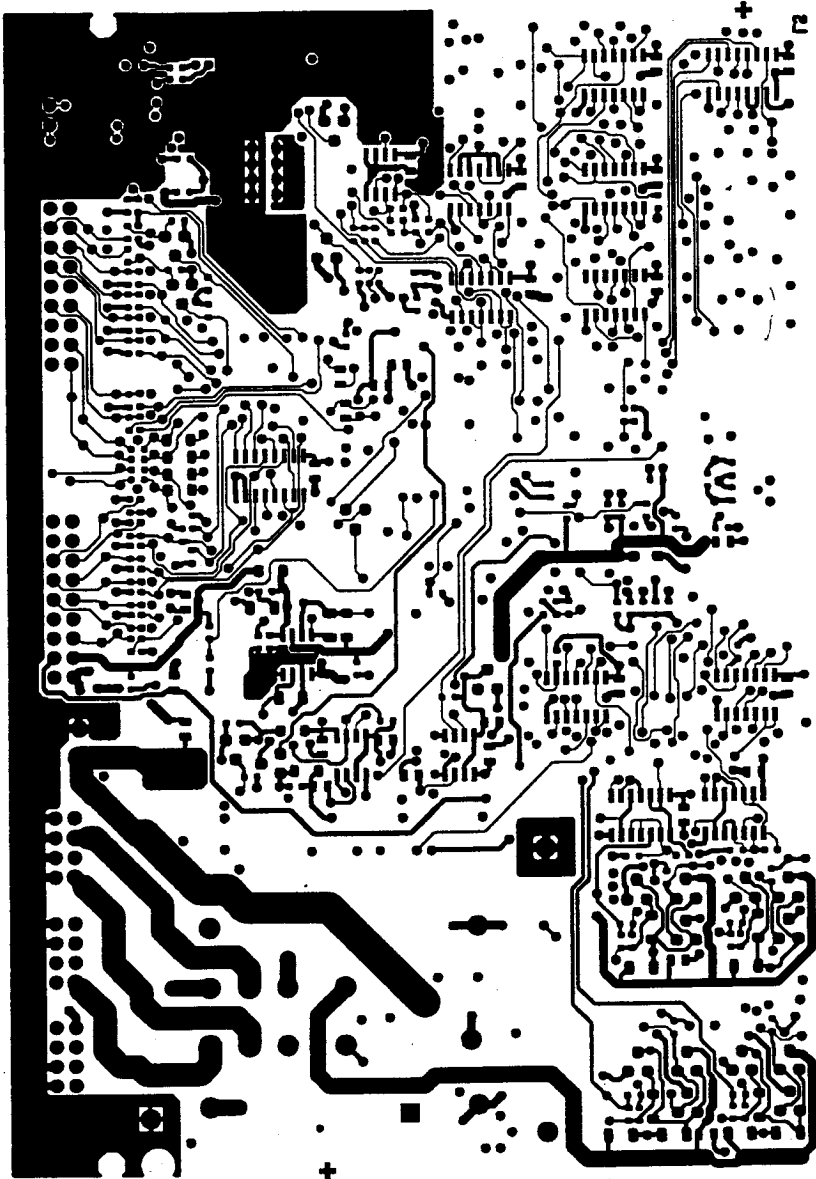
TDR

Proprietary data. All rights reserved.  
Siemens confidential.

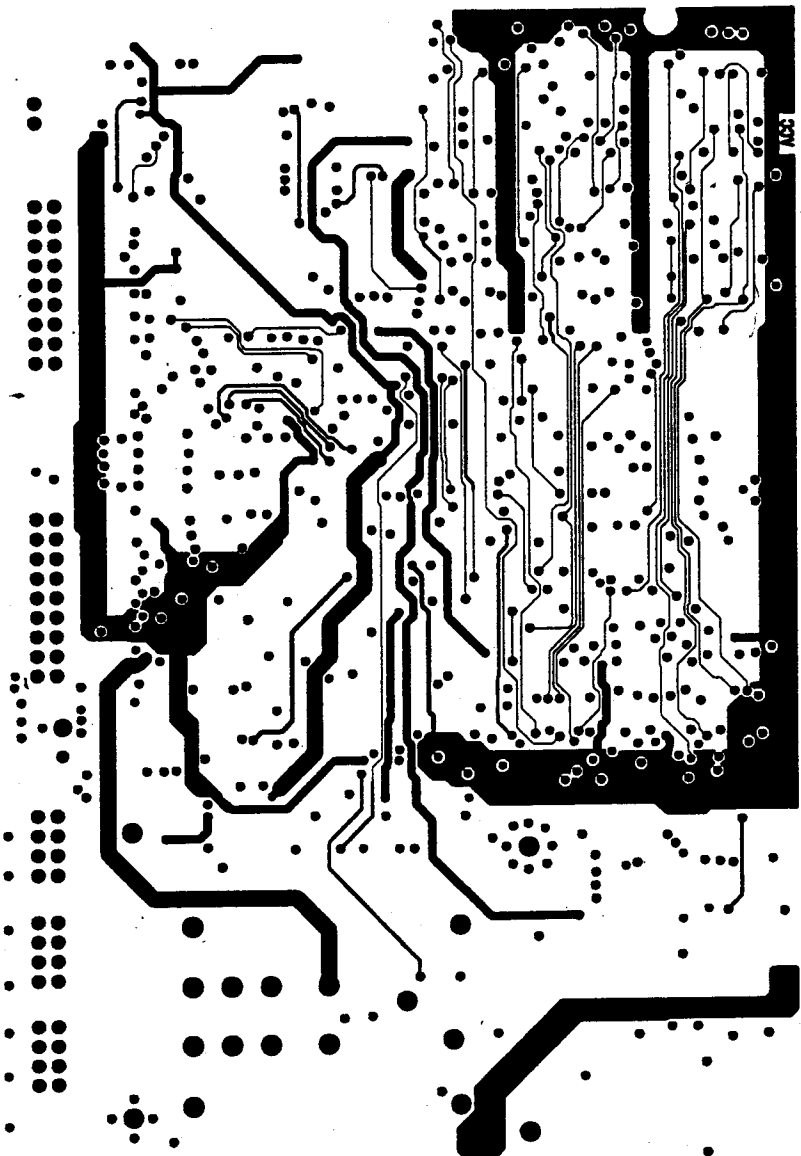
Piece	Idemno (Rgb)	Idemno (ext)(ext)	Title	Value/Type	Partreference	Geometry
1	0009.152.276		WIDERSSTAND/5%	IM	R446	0603
2	0009.153.022		WIDERSSTAND/5%	1K	R609, R621	1206
4	0009.153.030		WIDERSSTAND/5%	510R	R603, R604, R615, R616	1206
1	0009.154.111		WIDERSSTAND/5%	0R27	R105	MINIMELF_R
4	0009.154.115		WIDERSSTAND/5%	0R39	R210, R211, R212, R213	MINIMELF_R
1	0009.154.115		WIDERSSTAND/1%	39K2	R108	MINIMELF_R
1	0009.156.658		WIDERSSTAND/1%	200R	R106	1206
1	0009.159.430		WIDERSSTAND/1%	2K	R107	0603
1	0009.165.530		WIDERSSTAND/1%	10K	R110, R112	0603
2	0009.165.601		WIDERSSTAND/1%	33K2	R201, R216, R445, R505,	0603
6	0009.165.651		WIDERSSTAND/1%		R506, R507	0603
2	0009.165.701		WIDERSSTAND/1%	100K	R215, R444	0603
1	0009.165.972		WIDERSSTAND/1%	47K	R109	0603
2	0009.165.992		WIDERSSTAND/1%	470K	R113, R200	0603
2	0009.166.099		WIDERSSTAND/1%	0R	R117, R118	0805
2	0009.166.523		WIDERSSTAND/1%	1K69	R300, R301	0805
1	657632.20.91		KOND-EL-TA/6.3V/10%	3u3	C425	TAKOA
2	657736.20.18		KONDENSATOR/50V/5%	33p	C418, C419	0603
9	657736.20.19		KONDENSATOR/50V/5%	1u	C123, C200, C202, C205, C206, C207, C208, C417, C423	0603
1	657736.20.20		KONDENSATOR/50V/5%	100p	C415	0603
23	657736.20.54		KONDENSATOR/50V/10%	100n	C103, C105, C106, C108, C121, C201, C209, C300, C301, C414, C426, C433, C514, C515, C516, C517, C522, C526, C527, C604, C605, C607, C611	0805
2	659436.20.16		KONDENSATOR/50V/2%	180p	C602, C609	0603
1	659436.20.35		KONDENSATOR/50V/5%	3u3	C109	1206
14	659436.20.54		KONDENSATOR/50V/10%	10n	C111, C112, C114, C203, C400, C411, C420, C421, C422, C424, C427, C429, C430, C434	0603
4	659436.20.58		KONDENSATOR/50V/10%	470p	C603, C606, C610, C612	0603

Siemens AG	ATSE T42 R TDR	Date:	Name:
Automotive Regensburg	04.03.1998	4.12.1997	Oe/tec
	OFFIZIELLE KOPF	Editor:	Check:
State: a	01.20767		
State: b	15.054		
	26.01.98		

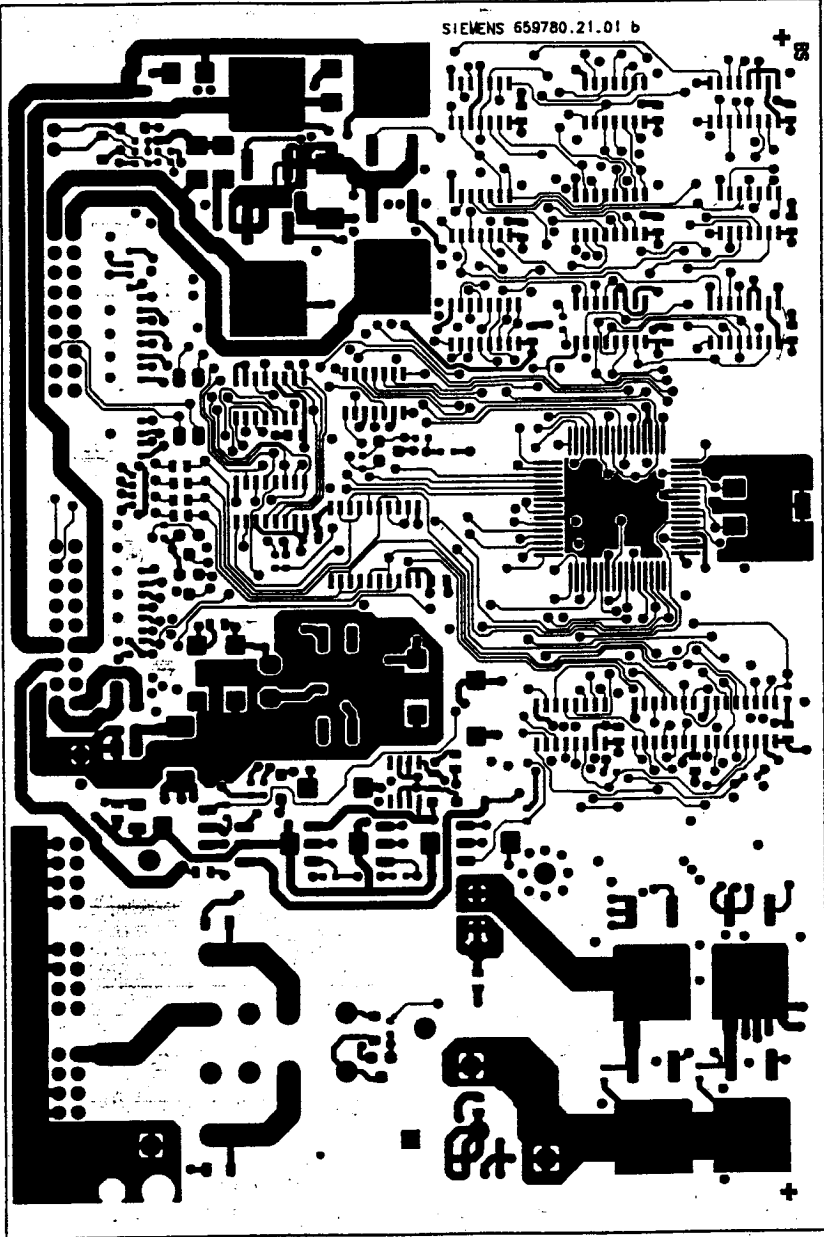
Bill of material  
Keyless\_Go\_StG



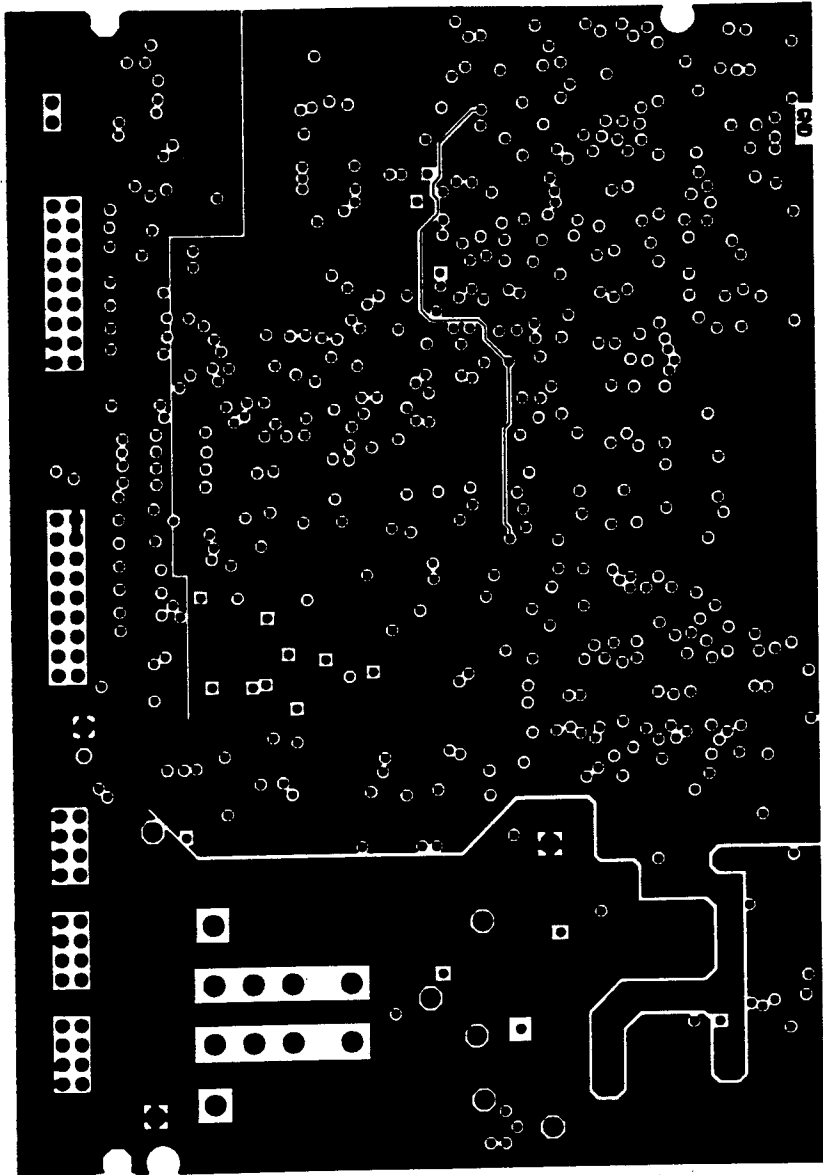
BOTTOM MB Key Go 659780.21.01 b 04.02.98



Layer 03 MB Key Co 659780.21.01 b 04.02.98



TOP MB Key Co 659780.21.01 b 04.02.98



Layer 02 MB Key Co 659780.21.01 o 04.02.98





TDR

Proprietary data. All rights reserved.  
Siemens confidential.

Piece	Identno (Rgb)	Identno (ext)(ext)	Title	Value/Type	Partreference	Geometry
// mechanic parts:						
1	659787.21.01		Leiterplatte		A1	
// electronic parts topside:						
1	659787.76.10		Kabel Antenne Fahretruer rechts	EINZEL_KONTAKT	X1	CONN5X1
1	659631.20.47		DIODE-SCHOTTKY	MBRS340T3	D201	DO214AB
4	659460.20.83		MOSFET-N	BUZ104	T103, T106, T203, T206	TO263_3
2	0009.153.036		WIDERSTAND/5%	330R	R106, R213	L206
2	657632.20.92		KONDENSATOR/35V/20%	6u8	C4, C5	TAKOD
2	657636.20.47		KONDENSATOR/50V/5%	100n	C208, C209	0805
1	657736.20.54		KONDENSATOR	6u8	C206	0805
2	659439.20.54		KONDENSATOR	33n	C1, C2	31_5X12RM37_5
1	659439.20.55		INDUKTIVITAET	1uH	C106	29X11RM35M2...
1	657637.20.95		INDUKTIVITAET	BLM41P600	L1	DROSSEL3
2	659437.20.24		INDUKTIVITAET	ZJYS51R5-ZPT	F2, F3	1806
1	659437.20.25		INDUKTIVITAET		F1	CAN_DR
// electronic parts bottomside:						
1	658167.20.59		IC-HCMOS	74HC00_POWER	V100	SO14
1	659631.20.25		IC-OPTOKOPPLER	HCPL0601	V10	SO8_H
1	257531.20.93		DIODE-SI	BAV99	D1	SOT23_T2
1	657520.20.06		DIODE-SI	BAV103	D202	MINIMELF_D
1	659231.20.39		DIODE-SI	LS4148	D10	MINIMELF_D
2	659631.20.18		DIODE-SCHOTTKY	LL103B	D100, D200	MINIMELF_D
1	659231.20.93		DIODE-Z	ZMM5V6	Z1	MINIMELF_D
4	657560.20.51		TRANS-PNP	BC807C	T102, T105, T202, T205	SOT23_T2
8	657560.20.53		TRANS	BC817C	T1, T100, T101, T104, T200, T201, T204, T207	SOT23_T2
1	0009.151.196		WIDERSTAND/5%	680R	R12	0805
4	0009.152.163		WIDERSTAND/5%	33R	R2	0603
4	0009.152.167		WIDERSTAND/5%	47R	R108, R109, R208, R209	0603
2	0009.152.176		WIDERSTAND/5%	100R	R107, R207	0603
2	0009.152.184		WIDERSTAND/5%	220R	R62, R203	0603
1	0009.152.195		WIDERSTAND/5%	620R	R212	0603

ATBE AS T11

AT BE  
Date: 24.11.97  
23.0198

Date: 10.12.1997

Editor:   
Check:

Name:   
Oe/tec  
Oe/tec

ECO No:   
State: a DF 10677  
State: b 15364877

Bill of material  
Fahretruer rechts komplett bestueckl

Siemens AG  
Automotive Regensburg

659787.76.06 ST

Page 1+