

**Continental**   
The Future in Motion



## Model TCAM1NA0 Label information

June, 19<sup>th</sup>. 2020  
version 04

[www.conti-online.com/www/automotive\\_de\\_en/general/interior/](http://www.conti-online.com/www/automotive_de_en/general/interior/)



Interior Division

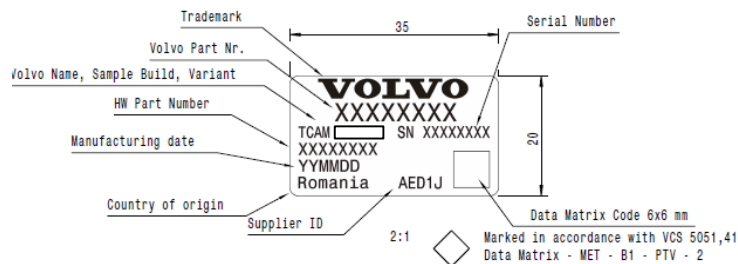
# TCAM1NA0 – Label marking USA/Canada

## Product Label

Label positions on product

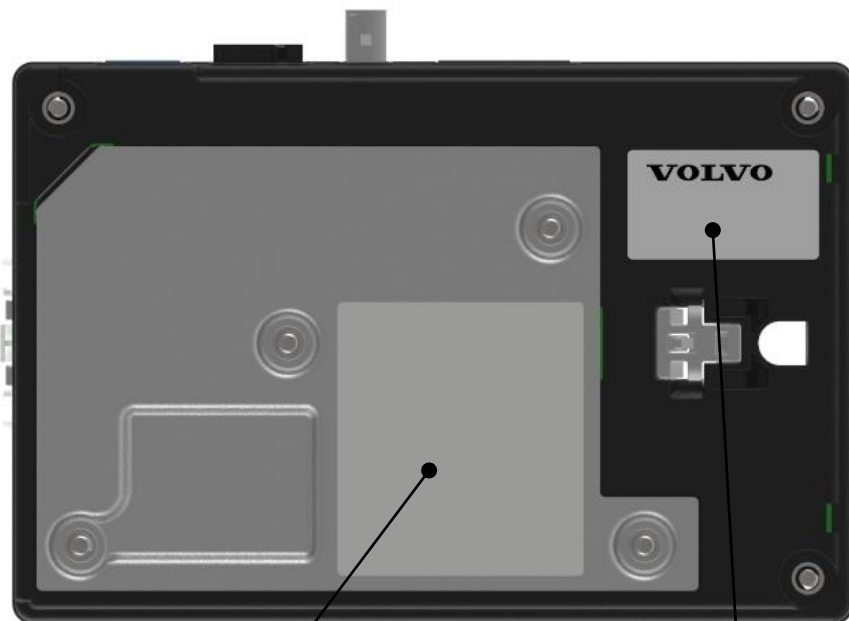
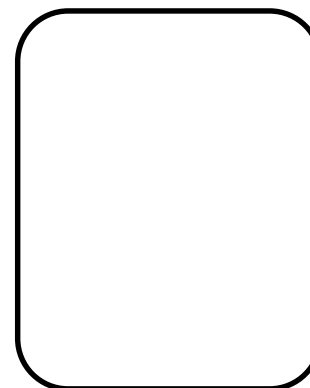
➤ 2 labels

Size **35 x 20 mm**



## Homologation Label

Size **50 x 40 mm**



Homologation  
label

Product/ type  
label

# TCAM1NA0 – Label Marking USA/Canada

## ➤ Manufacturer

- › **Trademark:** Continental
- › **Manufacturer:**
- › Continental Automotive GmbH
- › Siemensstrasse 12
- › 93055 Regensburg
- › Germany
- › **Country of origin:** Made in Romania
- ›

# TCAM1NA0 – Label marking USA/Canada

## ➤ North America

Size **50 x 40 mm**

(NA)



- › At product label:
- › Manufacturer and address *(comment: the manufacturer is the applicant of the certification and not the factory)*
- › Model: TCAM1NA0
- › USA: FCC ID: KR5TCAM1NA0
- › Canada: IC :7812D-TCAM1NA0
- › Made in Romania
- › *(comment: we are doing non modular approval for TCAM1NA0, so the label does not include contains FCC ID: xxxx and contains IC: xxxxx statements about the NAD module certification numbers)*