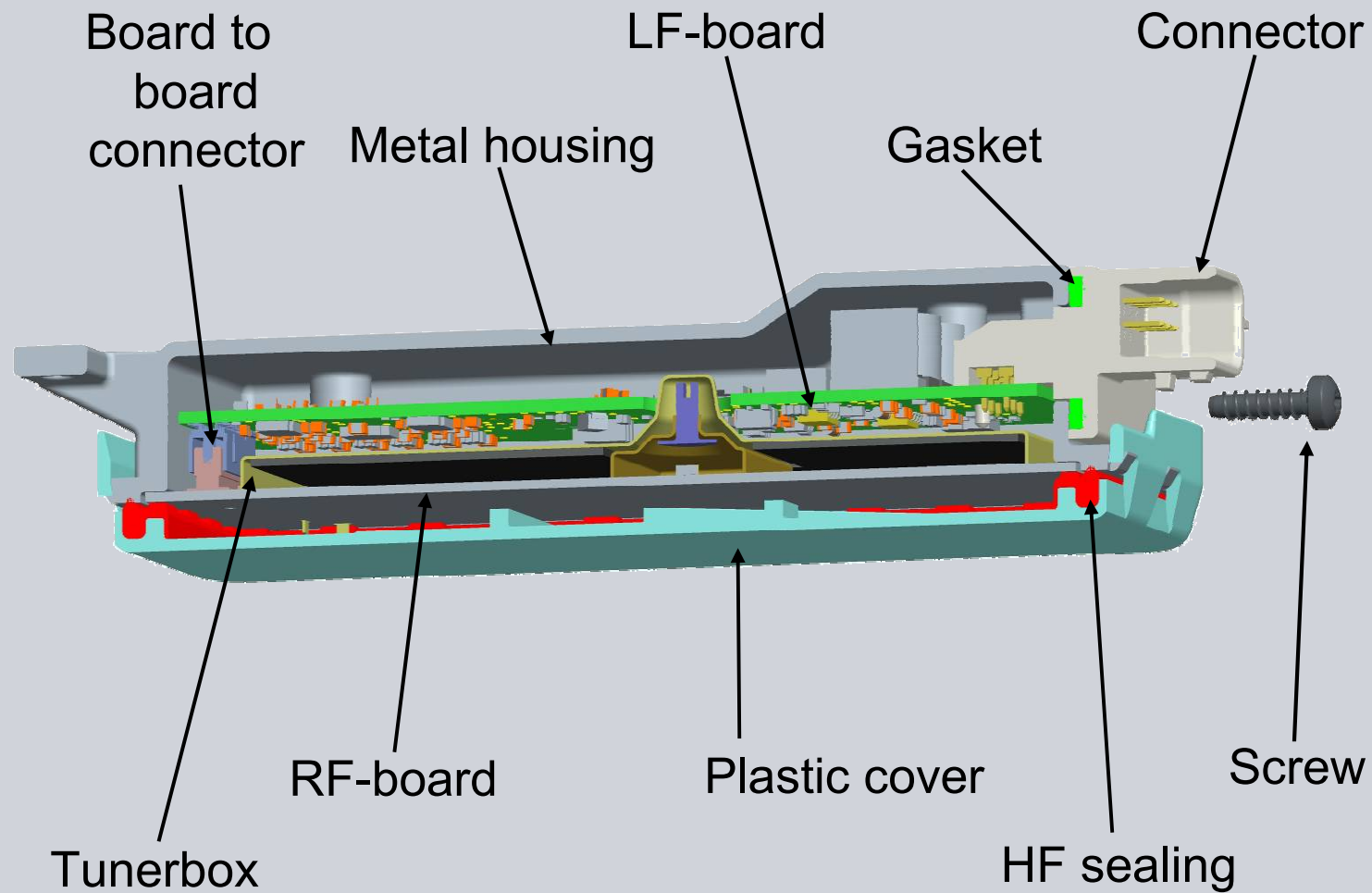


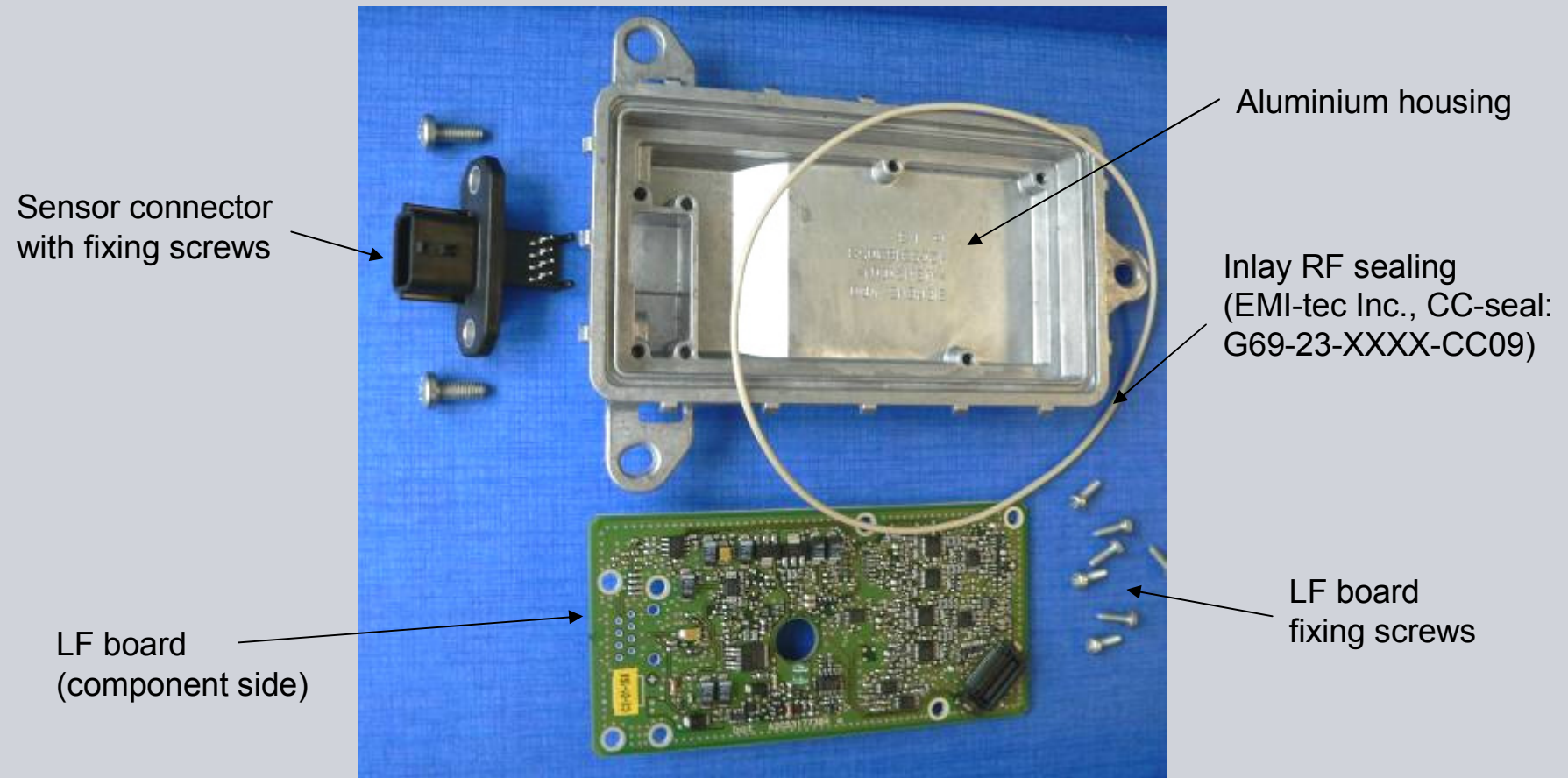
## Exhibit 9 – Internal Photographs DUT assembly overview

SIEMENS VDO



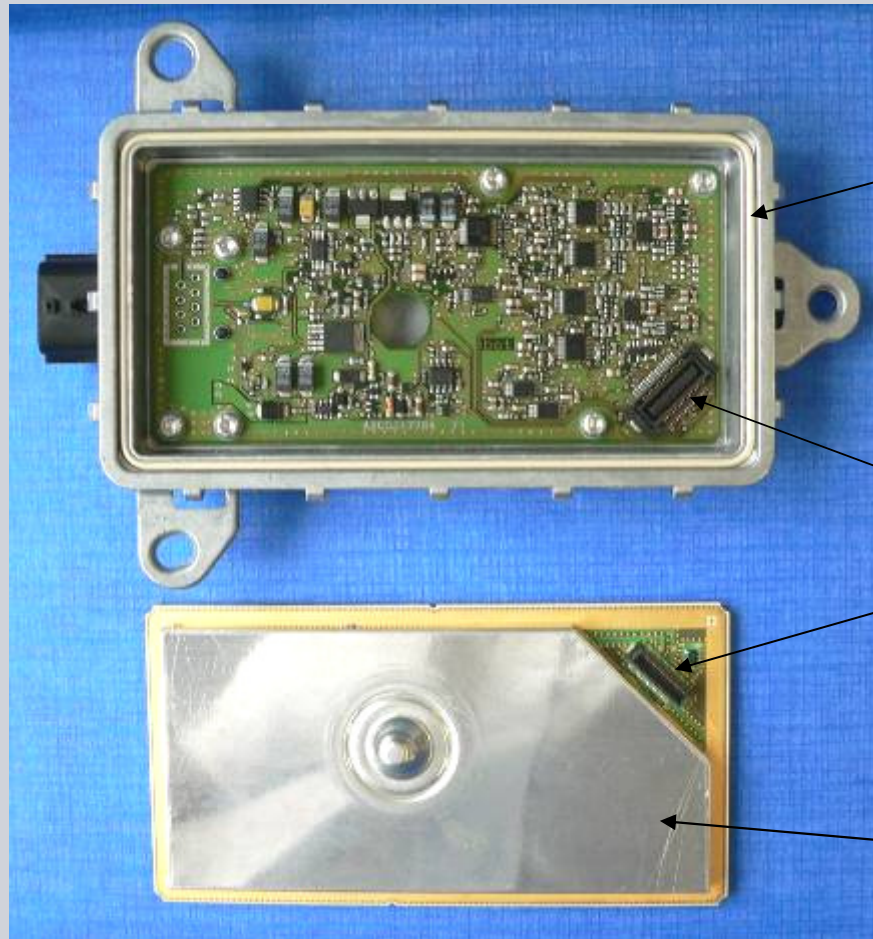
## Exhibit 9 – Internal Photographs DUT Metal Housing, LF board and HF sealing

SIEMENS VDO



## Exhibit 9 – Internal Photographs DUT LF and RF board before assembly

SIEMENS VDO



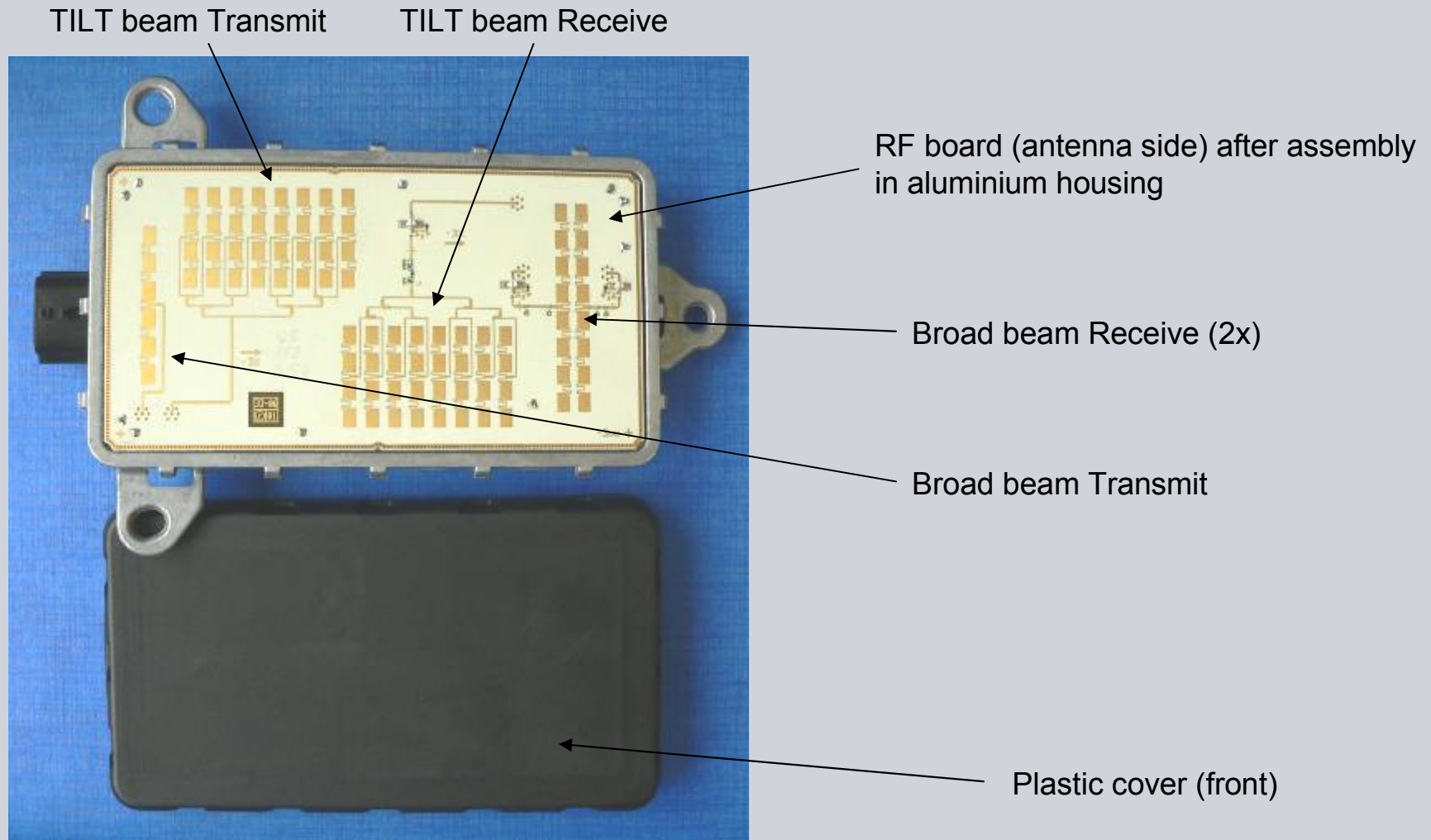
LF board (rear) in aluminium housing  
with RF sealing

Board – to – board connector

RF board (rear) with tunerbox

## Exhibit 9 – Internal Photographs DUT RF board after assembly

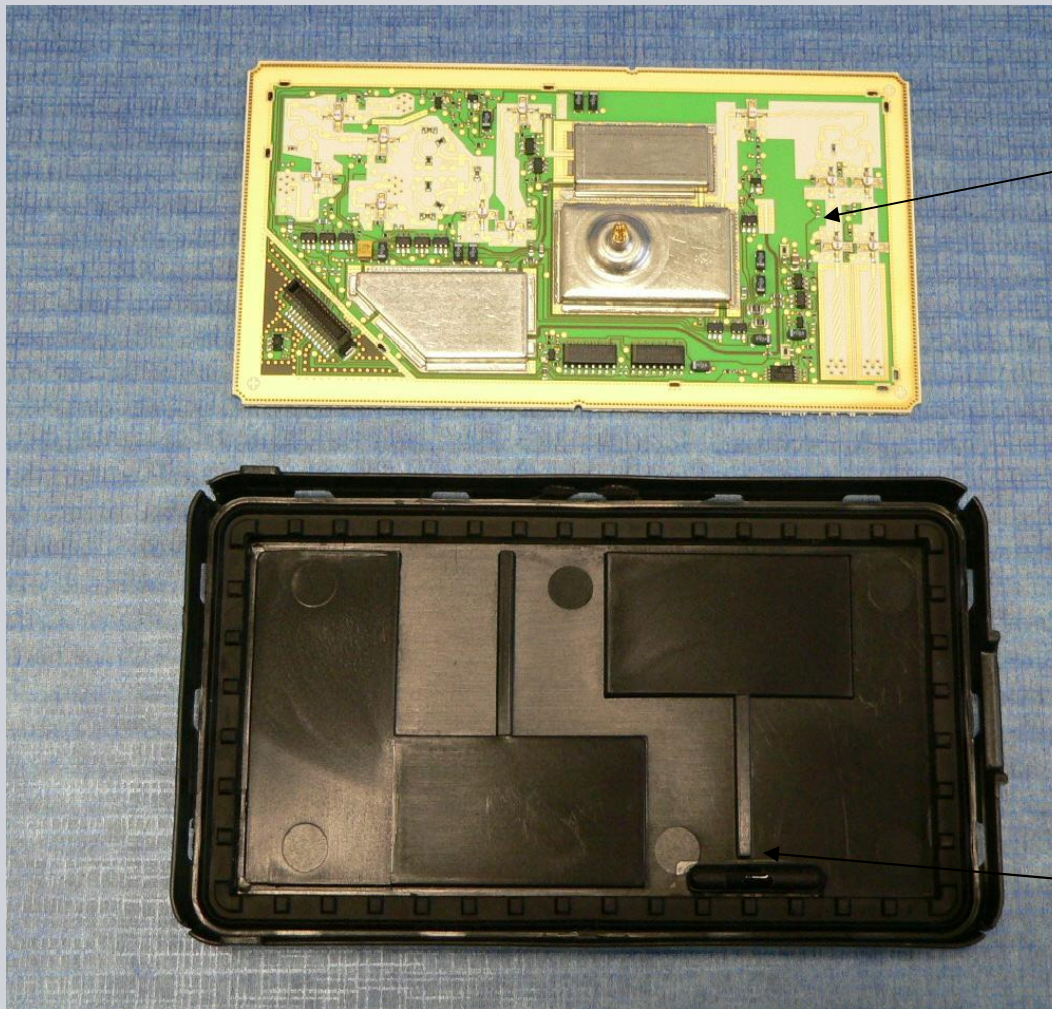
SIEMENS VDO





## Exhibit 9 – Internal Photographs DUT RF board and plastic cover rear view

SIEMENS VDO

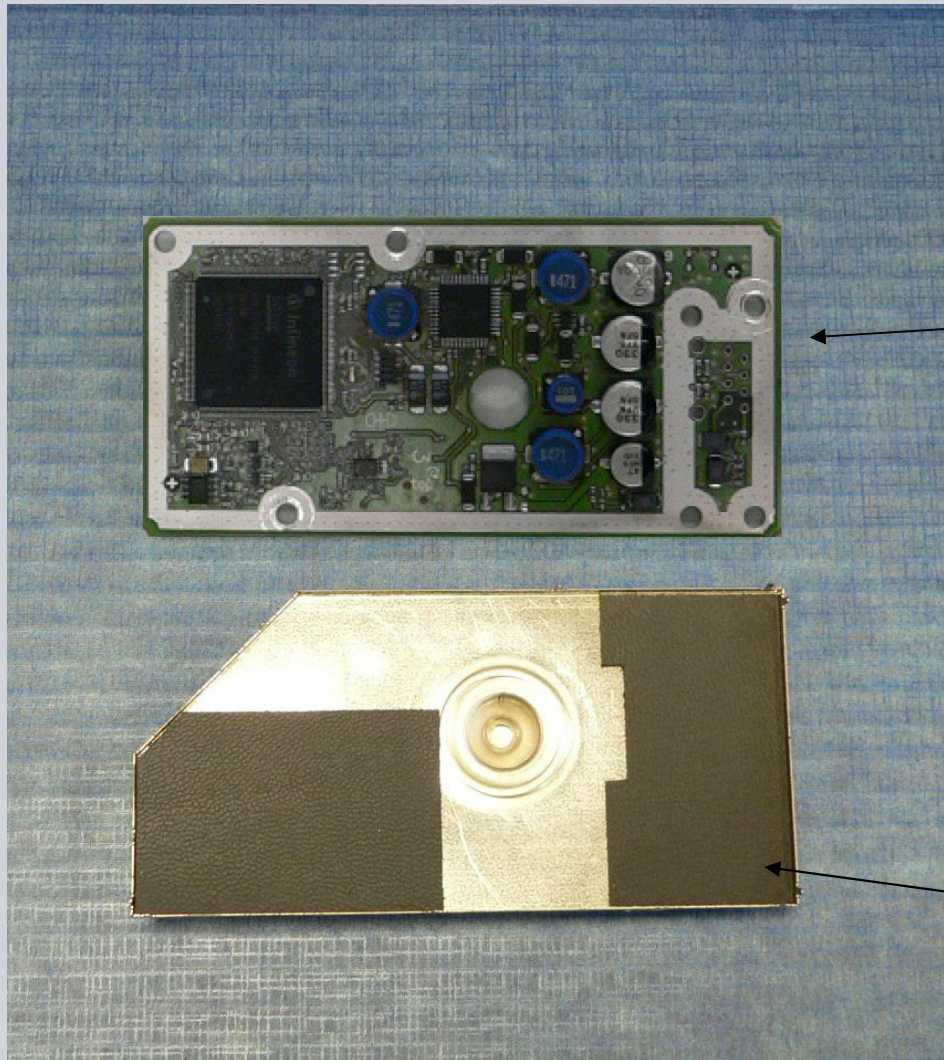


RF board (component side) without tunerbox

Plastic cover (rear)

## Exhibit 9 – Internal Photographs DUT LF board and tunerbox rear view

SIEMENS VDO



LF board (front)

Tunerbox (rear)



## Exhibit 9 – Internal Photographs DUT – all apart

SIEMENS VDO



## Exhibit 9 – Internal Photographs DUT – final assembly cross section

SIEMENS VDO

Horizontal polarization for both beams

