



5.1.2 Picture of the C2-Sample Antenna

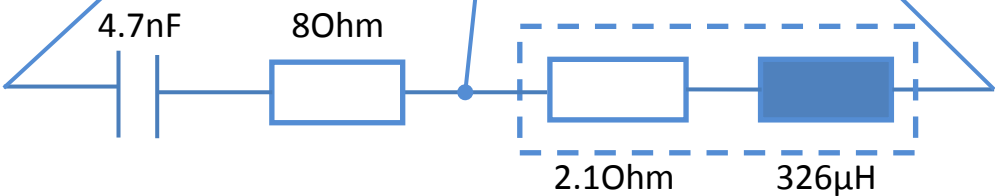
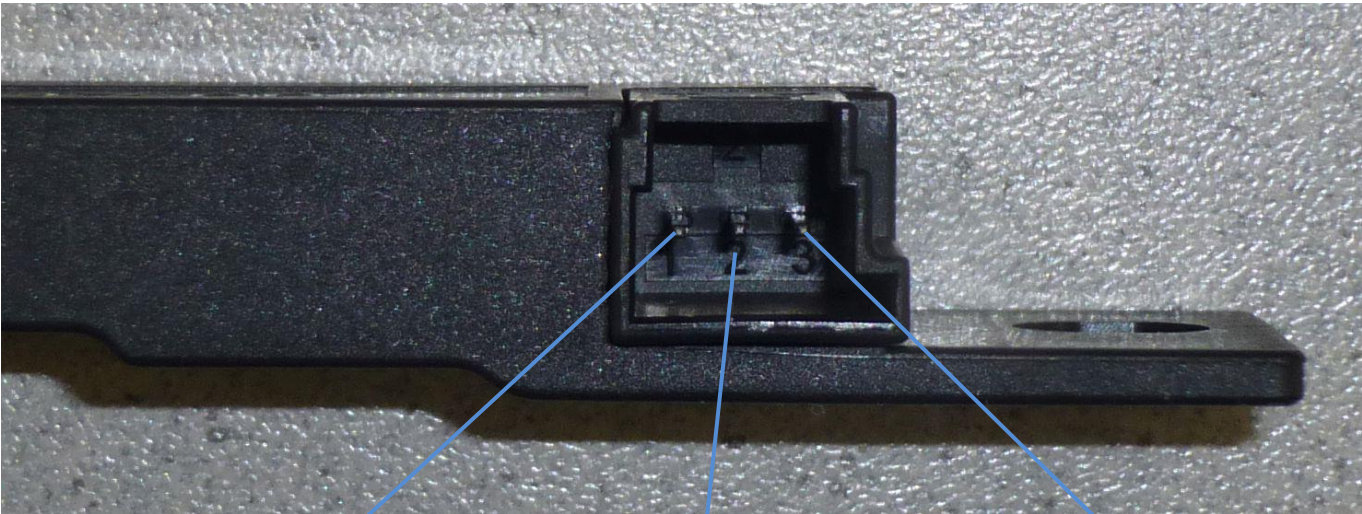


Fig. 20 Antenna housing and pinning

Hella 8303EN_GE (2004-09)

5.1.3 Mechanical Parameter

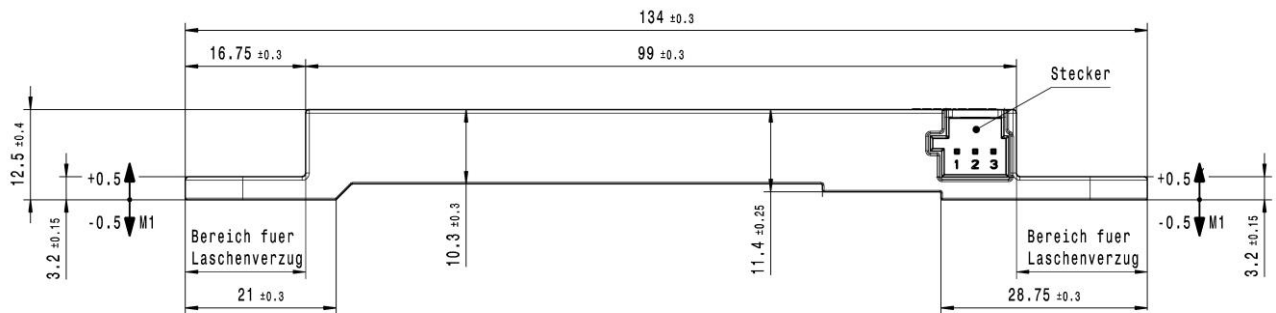


Fig. 21 Extract of the antenna part description

Antenna gain: 77,5 dB μ A/m @ 1m @125kHz, 500mAp (measured radial)

Type: magnetic antenna, winded ferrit core for inductive data transfer

Manufacture : HELLA

Antenna size and pattern diagram: Core: 72 x 12,5 x 4 mm

Maximum declared cable length which can be connected (CM):

Exterior Antenna: 5m

Interior Antenna: < 3m



2.1 LF Antenna Positions in Vehicle

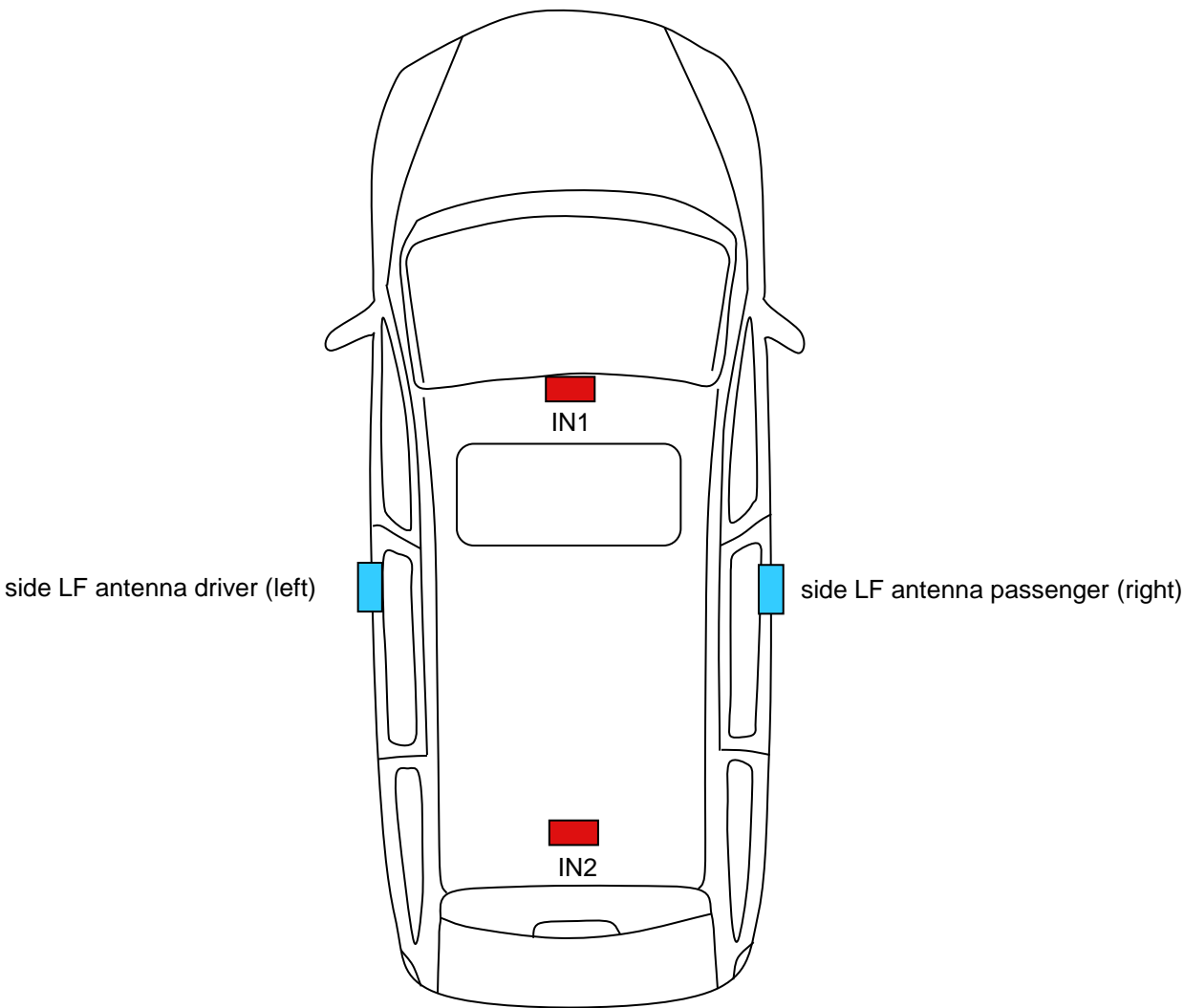


Fig. 1 Antenna Positions at a Keyless Entry / Keyless Start Vehicle

Hella 8303EN_GE (2004-09)