



Deutsche
Akkreditierungsstelle
D-PL-12053-01-01

**Annex acc. to FCC Title 47 CFR Part 15
relating to
Continental Automotive GmbH
BMW BDC**

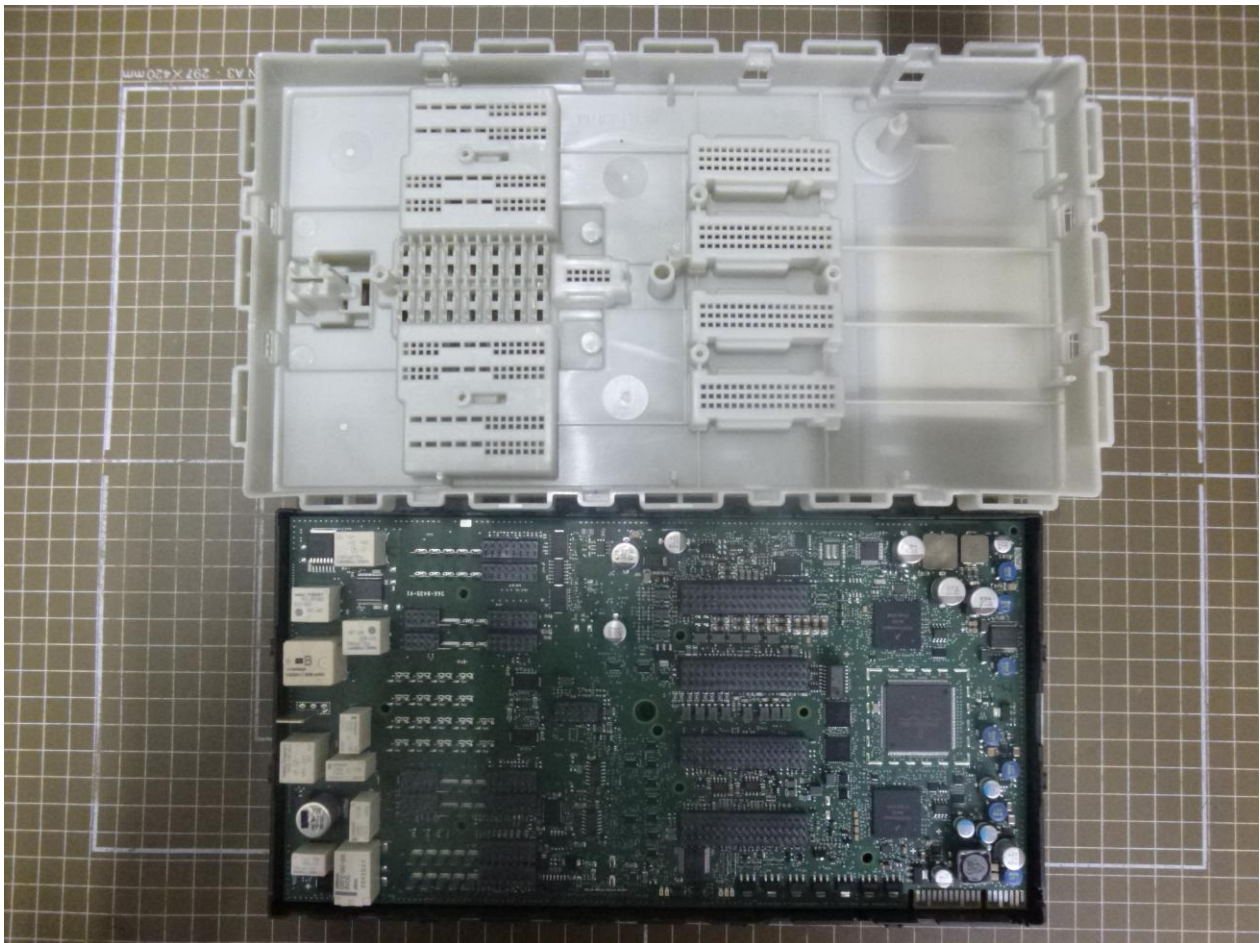
Annex no. 2

Internal Photographs

**Title 47 - Telecommunication
Part 15 - Radio Frequency Devices
Subpart C – Intentional Radiators
Measurement Procedure: ANSI C63.4-2009**

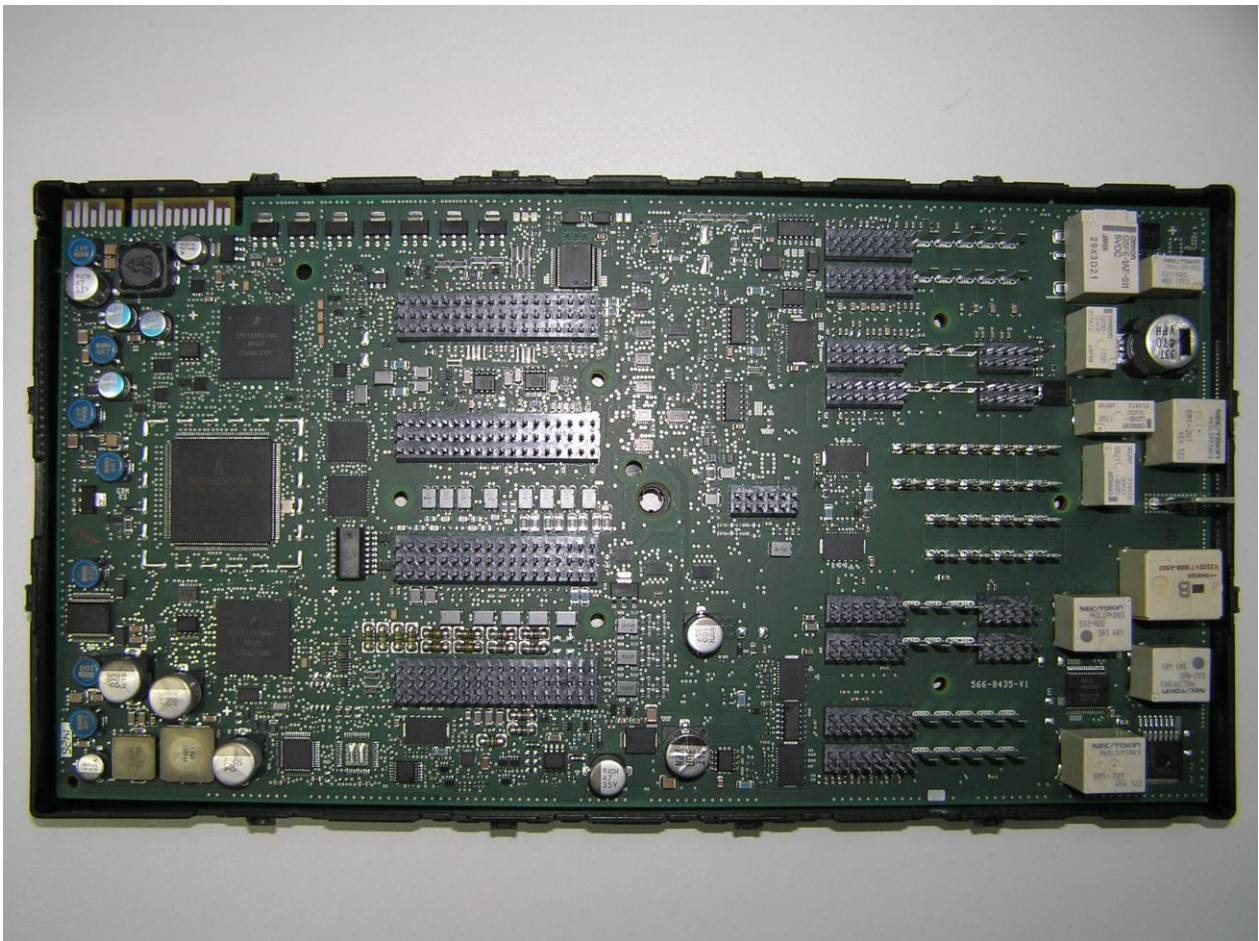
Photographs of the test equipment (EUT) - Internal construction Upper side

The equipment shall be opened only after type testing is completed and photographs of the internal construction shall be made.



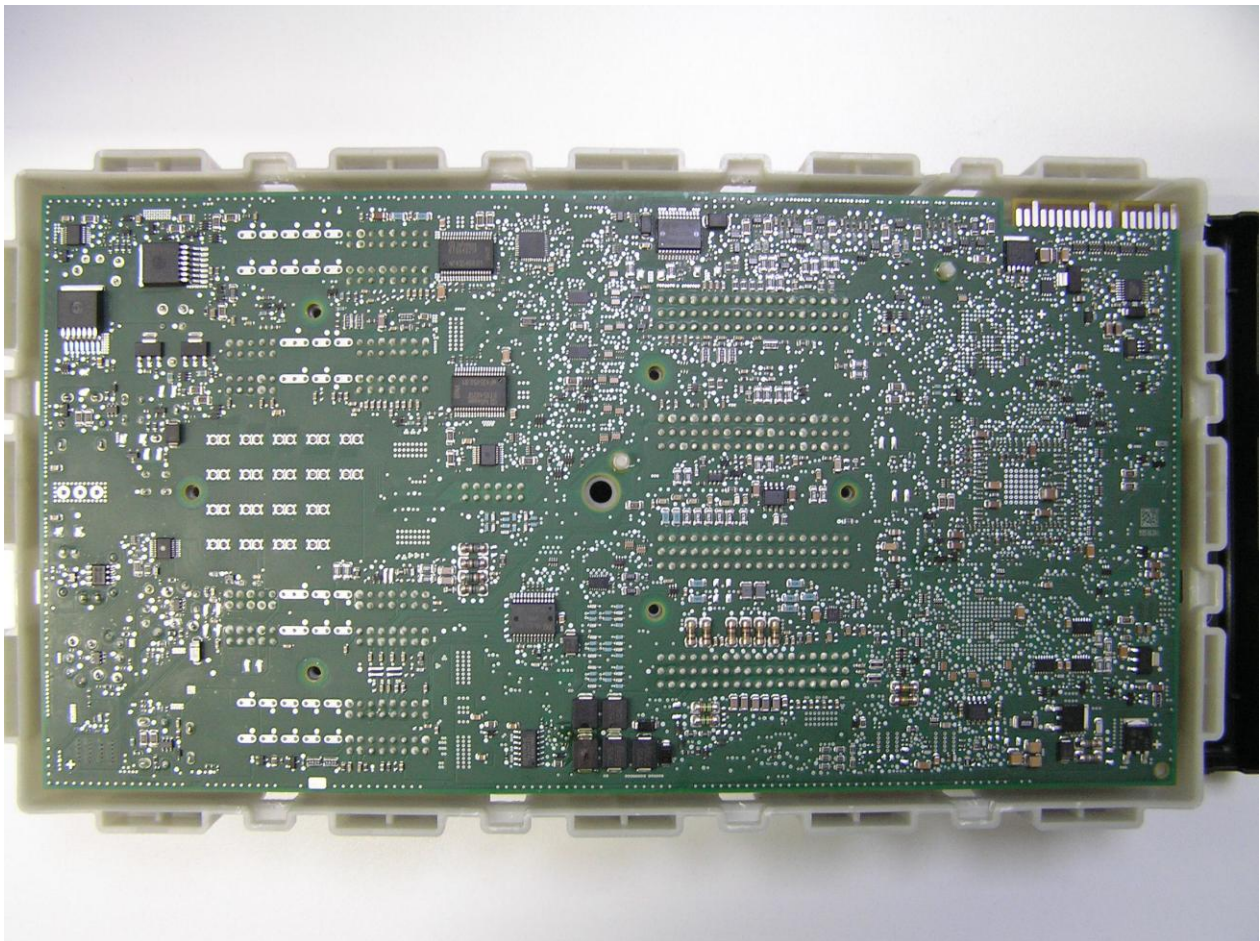
Photographs of the test equipment (EUT) – PCB Upper Side with Lower Enclosure

The equipment shall be opened only after type testing is completed and photographs of the internal construction shall be made.



Photographs of the test equipment (EUT) - PCB Lower side of unit

The equipment shall be opened only after type testing is completed and photographs of the internal construction shall be made.



Reference Test report no. 15009731

EUT: BMW BDC

FCC ID: KR5BMWBDK

FCC Title 47 CFR Part 15 C

Date of issue: 2015-01-29

End