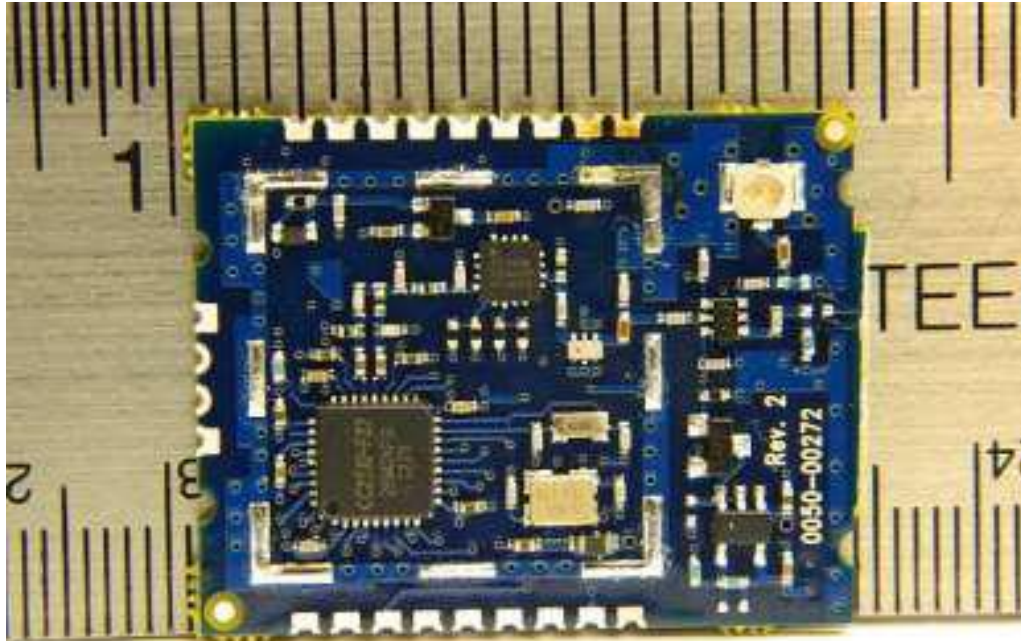
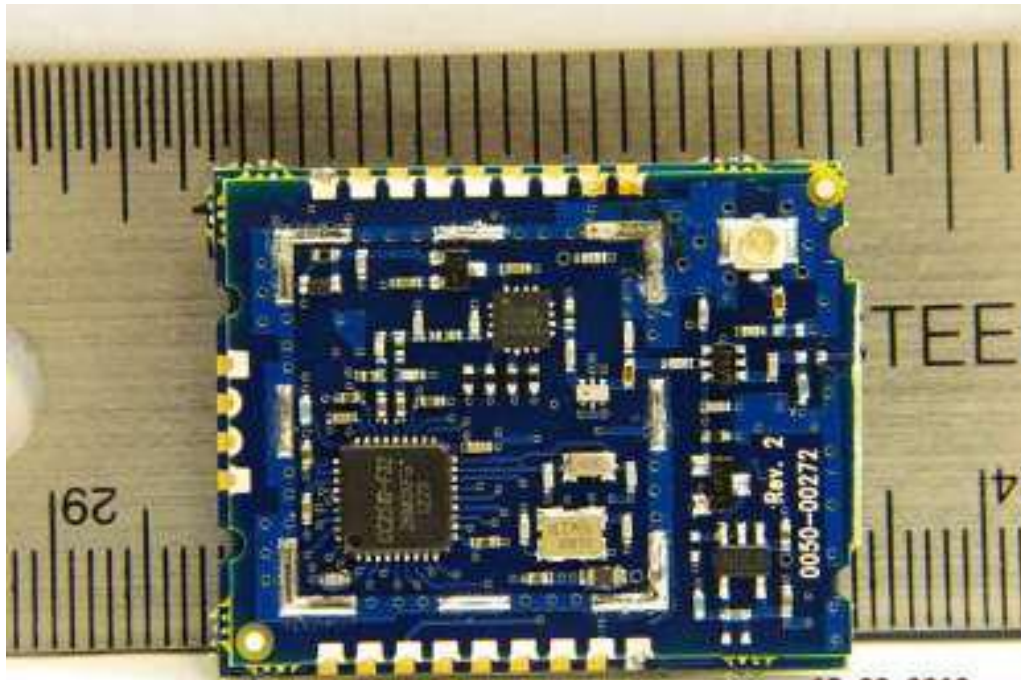


Top side
RM024-S10-C



10.02.2012

RM024-P10-C



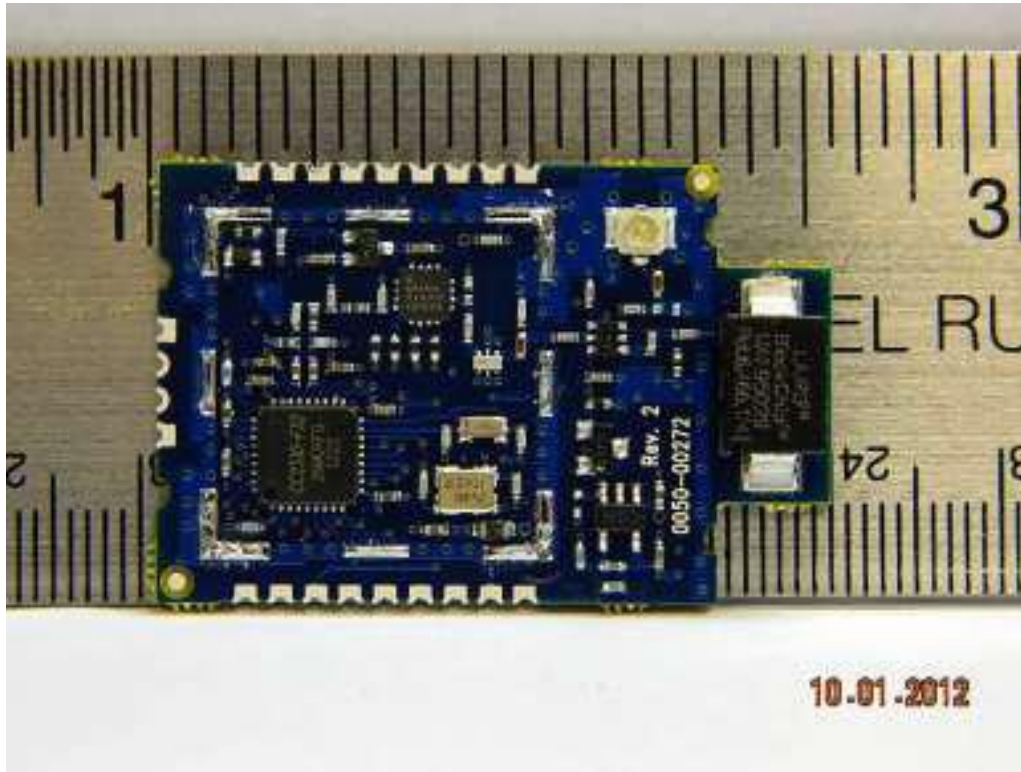
10.02.2012

Rogers Labs, Inc.
4405 W. 259th Terrace
Louisburg, KS 66053
Phone/Fax: (913) 837-3214
Revision 1

Laird Technologies
Model: RM024-10
Test #: 141212
Test to: FCC (15.247), RSS-210
File: IntPho RM024_10

FCC ID: KQL-RM02410
IC: 2268C-RM02410
SN: ENG1
Date: December 16, 2014
Page 1 of 4

RM024-S10-M



RM024-P10-M



Rogers Labs, Inc.
4405 W. 259th Terrace
Louisburg, KS 66053
Phone/Fax: (913) 837-3214
Revision 1

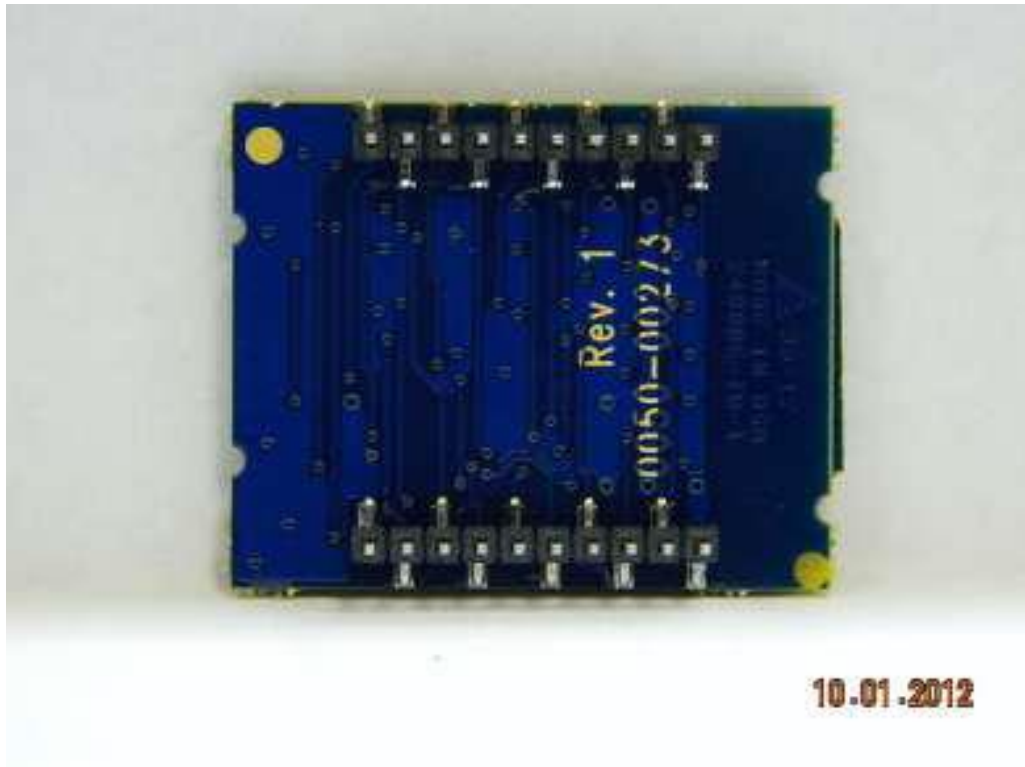
Laird Technologies
Model: RM024-10
Test #: 141212
Test to: FCC (15.247), RSS-210
File: IntPho RM024_10

FCC ID: KQL-RM02410
IC: 2268C-RM02410
SN: ENG1
Date: December 16, 2014
Page 2 of 4

Bottom side
RM024-S10-C



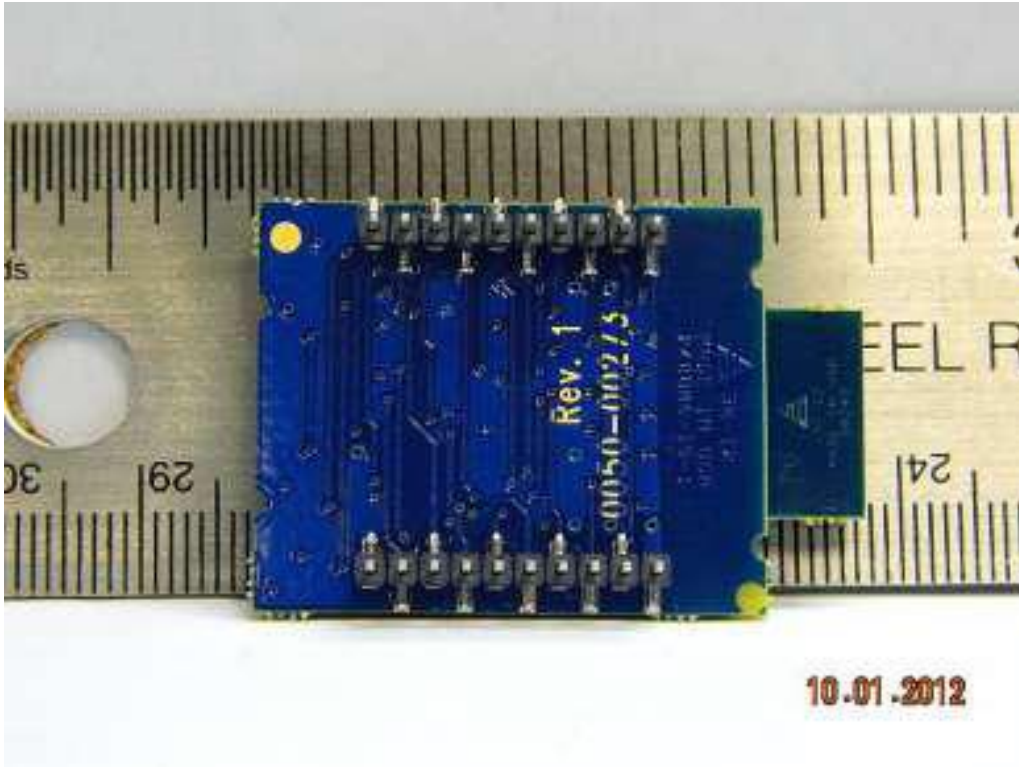
RM024-P10-C



RM024-S10-M



RM024-P10-M



Rogers Labs, Inc.
4405 W. 259th Terrace
Louisburg, KS 66053
Phone/Fax: (913) 837-3214
Revision 1

Laird Technologies
Model: RM024-10
Test #: 141212
Test to: FCC (15.247), RSS-210
File: IntPho RM024_10

FCC ID: KQL-RM02410
IC: 2268C-RM02410
SN: ENG1
Date: December 16, 2014
Page 4 of 4