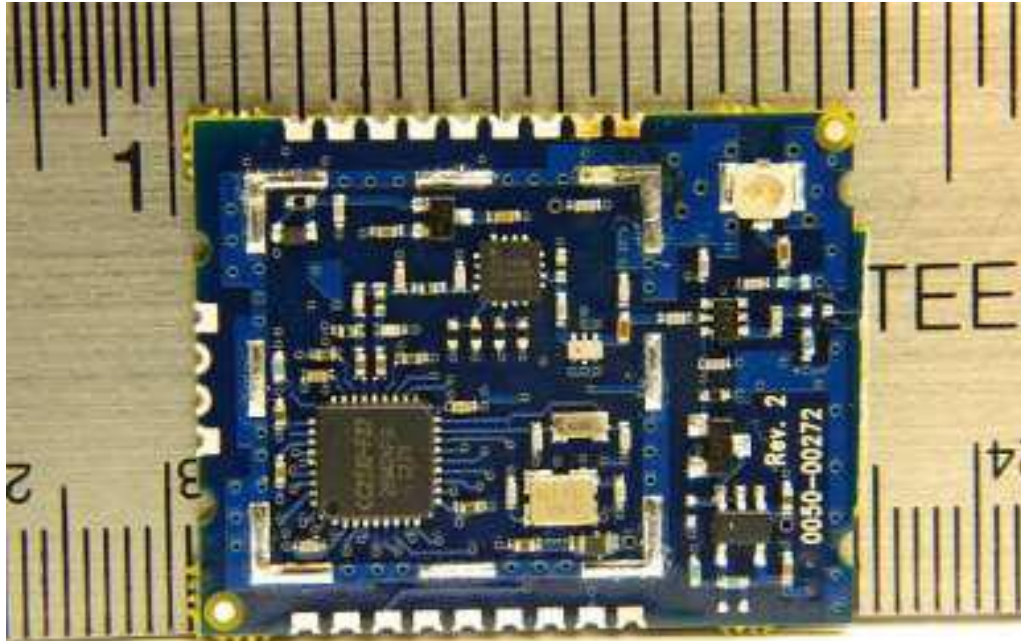
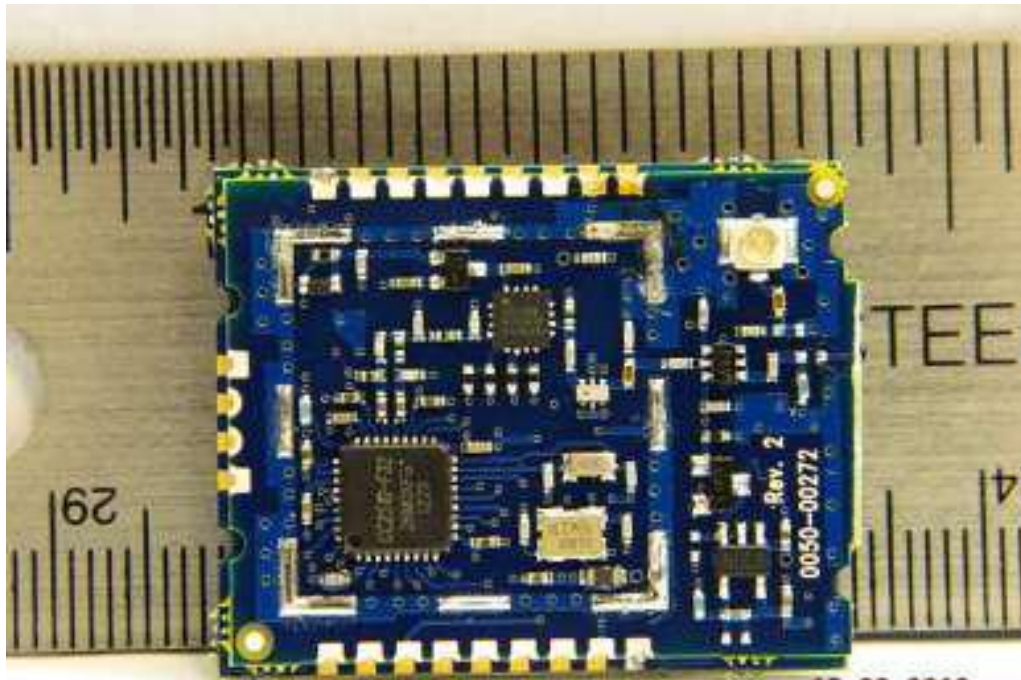


Top side  
RM024-S125-C



10.02.2012

RM024-P125-C



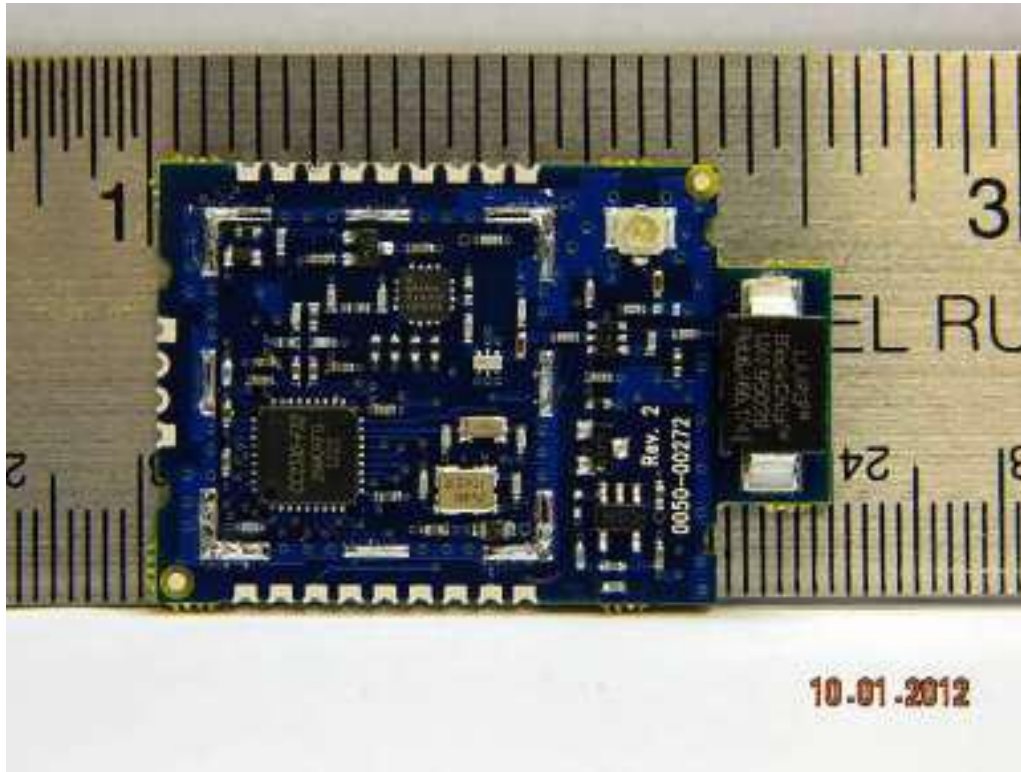
10.02.2012

Rogers Labs, Inc.  
4405 W. 259th Terrace  
Louisburg, KS 66053  
Phone/Fax: (913) 837-3214  
Revision 1

Laird Technologies  
Model: RM024  
Test #: 120924  
Test to: FCC (15.247), RSS-210  
File: IntPho RM024

FCC ID: KQL-RM024  
IC: 2268C-RM024  
SN: ENG1  
Date: October 11, 2012  
Page 1 of 4

RM024-S125-M



RM024-P125-M



Rogers Labs, Inc.  
4405 W. 259th Terrace  
Louisburg, KS 66053  
Phone/Fax: (913) 837-3214  
Revision 1

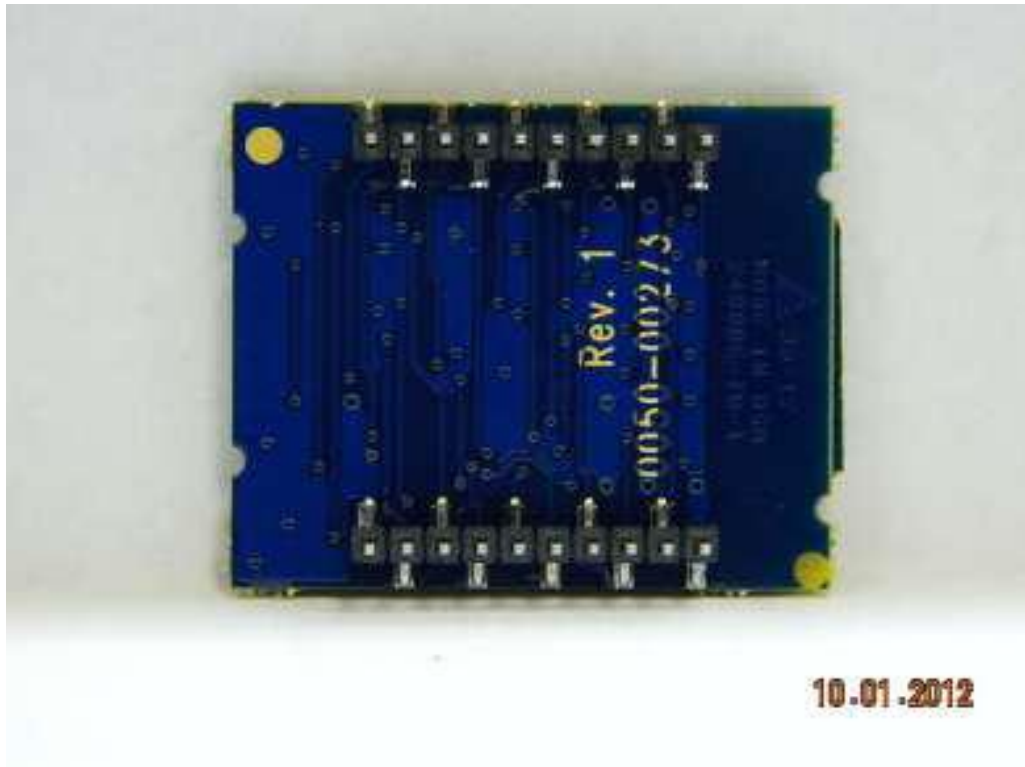
Laird Technologies  
Model: RM024  
Test #: 120924  
Test to: FCC (15.247), RSS-210  
File: IntPho RM024

FCC ID: KQL-RM024  
IC: 2268C-RM024  
SN: ENG1  
Date: October 11, 2012  
Page 2 of 4

Bottom side  
RM024-S125-C



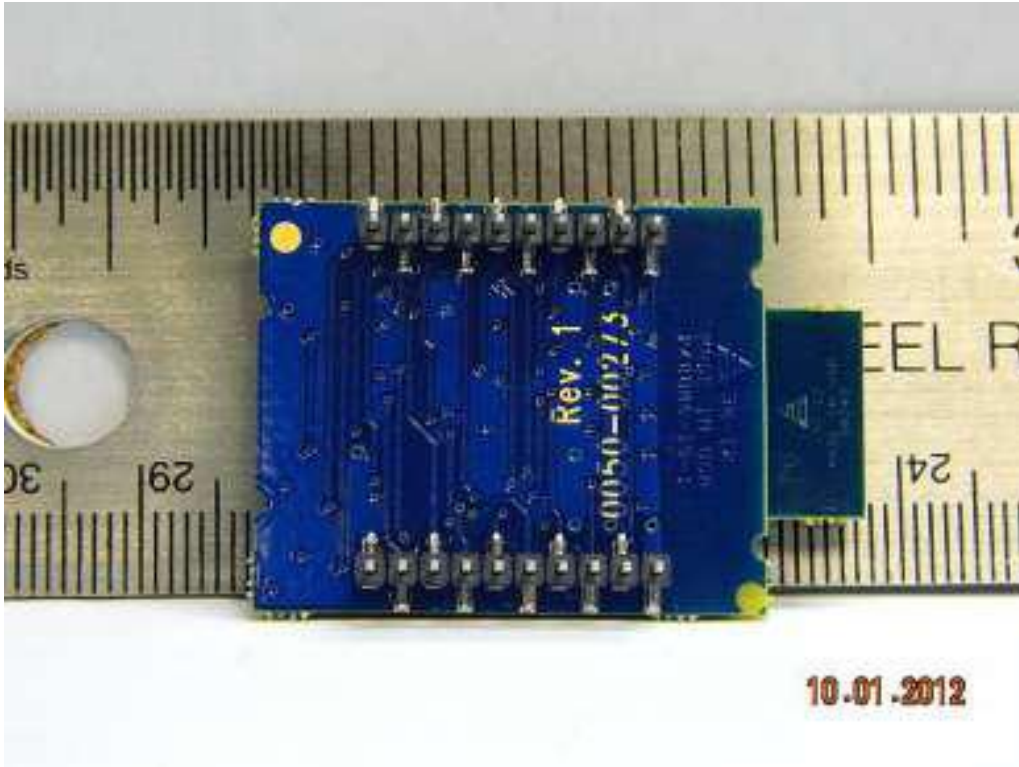
RM024-P125-C



RM024-S125-M



RM024-P125-M



Rogers Labs, Inc.  
4405 W. 259th Terrace  
Louisburg, KS 66053  
Phone/Fax: (913) 837-3214  
Revision 1

Laird Technologies  
Model: RM024  
Test #: 120924  
Test to: FCC (15.247), RSS-210  
File: IntPho RM024

FCC ID: KQL-RM024  
IC: 2268C-RM024  
SN: ENG1  
Date: October 11, 2012  
Page 4 of 4