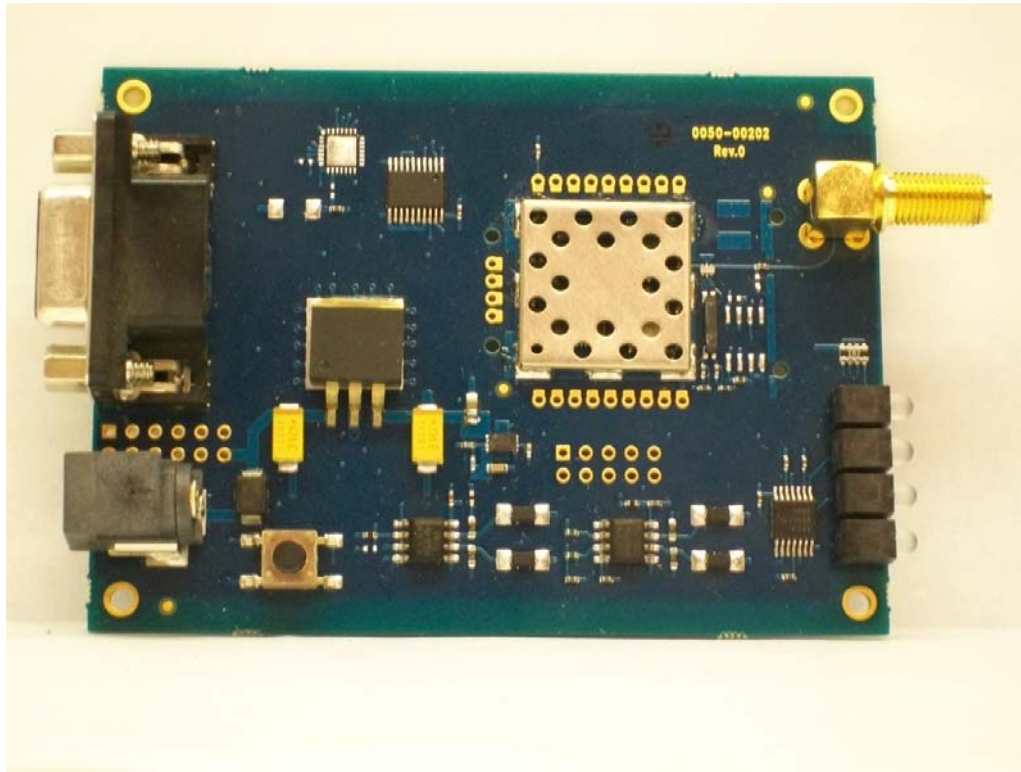
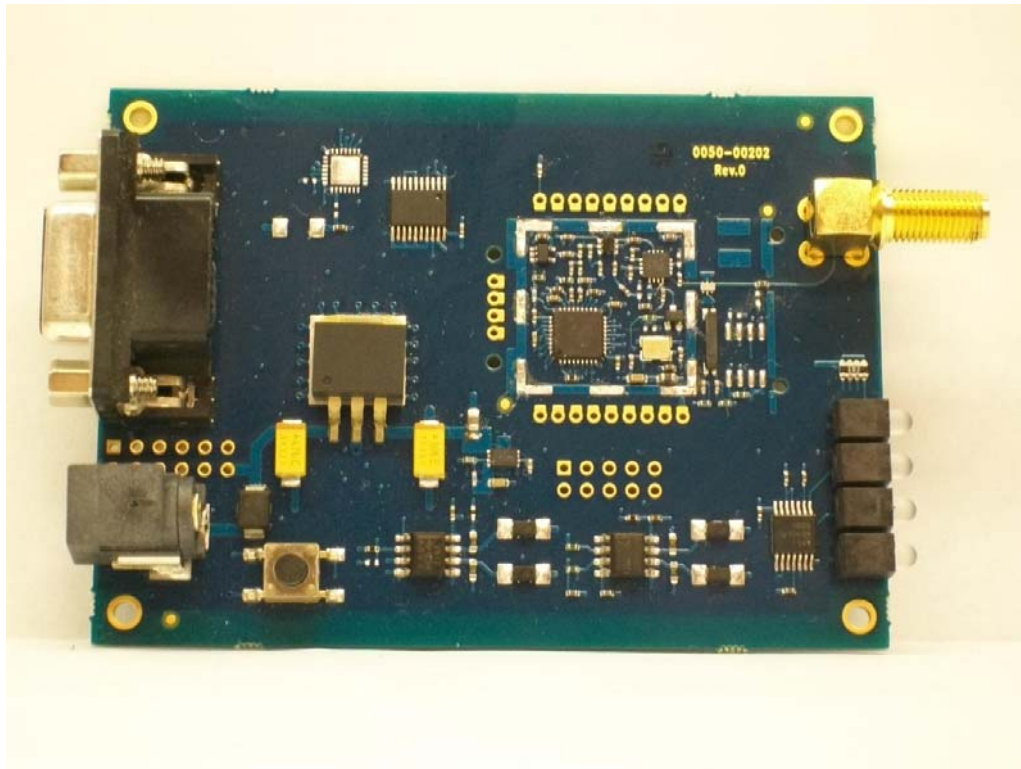


EUT with shield



EUT with shield removed

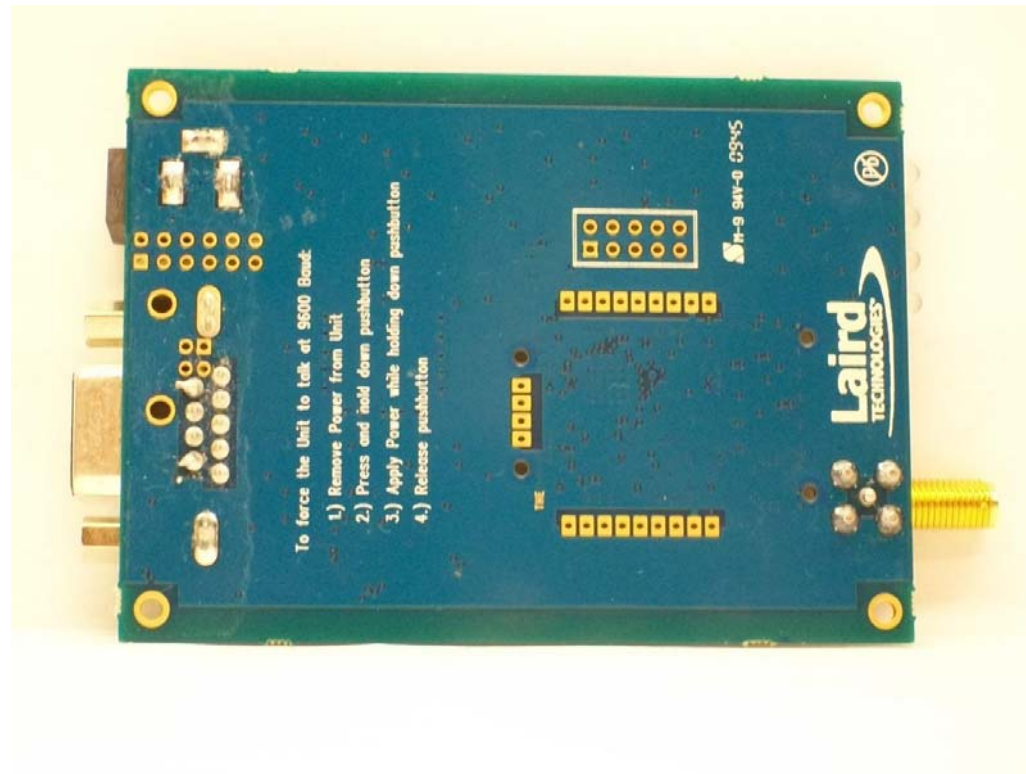


Rogers Labs, Inc.  
4405 West 259<sup>th</sup> Terrace  
Louisburg, KS 66053  
Phone/Fax: (913) 837-3214  
Revision 1

Laird Technologies  
Model: CL2510-100-422  
Test #: 100314  
Test to: CFR47 Parts 2 and 15.247, RSS-210  
File: IntPho CL2510GT

FCC ID#: KQL-CL2510GT  
IC: 2268C- CL2510GT  
SN: ENG 422  
Date: April 2, 2010  
Page 1 of 2

Back side of EUT PCB



Rogers Labs, Inc.  
4405 West 259<sup>th</sup> Terrace  
Louisburg, KS 66053  
Phone/Fax: (913) 837-3214  
Revision 1

Laird Technologies  
Model: CL2510-100-422  
Test #: 100314  
Test to: CFR47 Parts 2 and 15.247, RSS-210  
File: IntPho CL2510GT

FCC ID#: KQL-CL2510GT  
IC: 2268C- CL2510GT  
SN: ENG 422  
Date: April 2, 2010  
Page 2 of 2