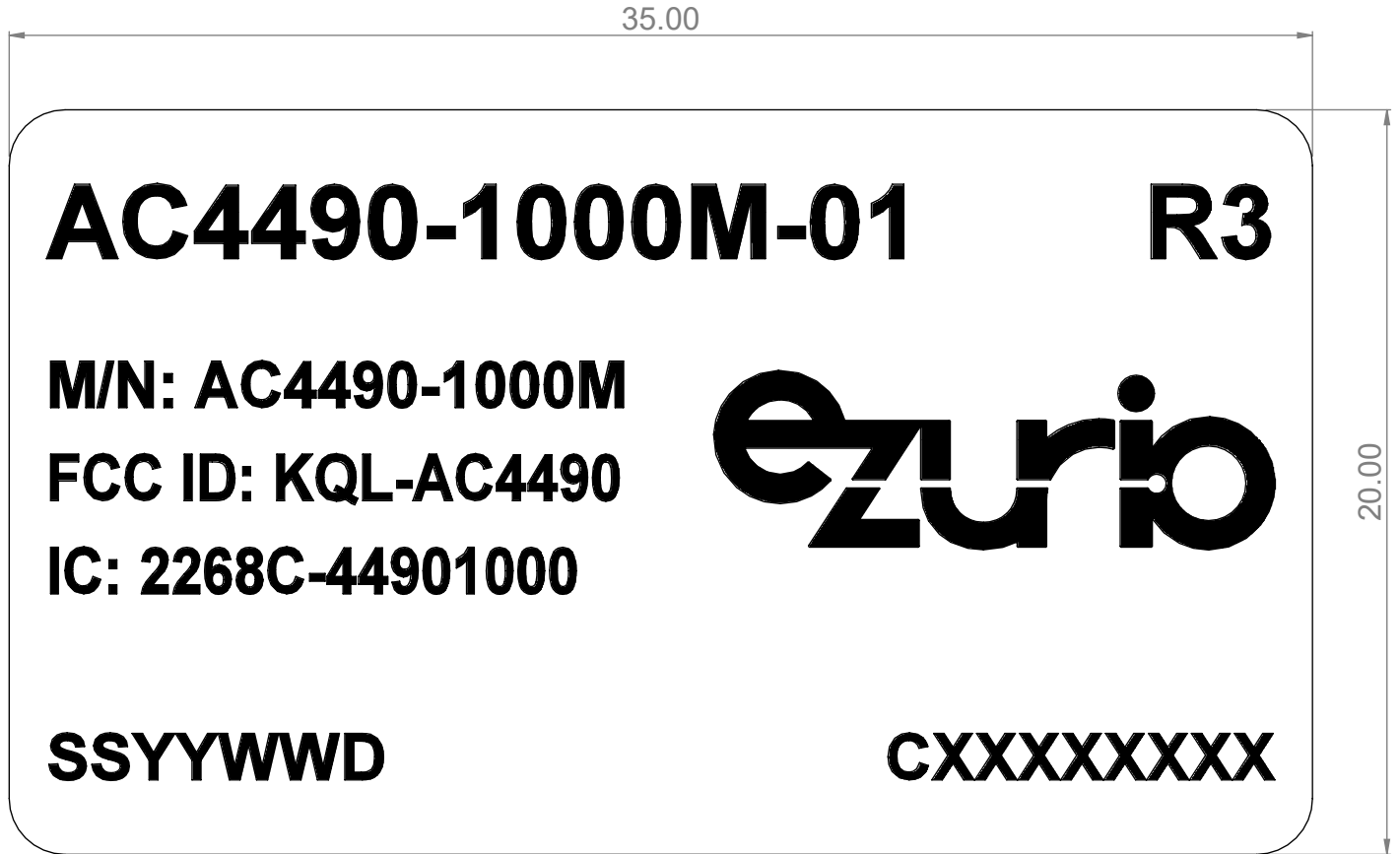


ITEM NO.	PART NUMBER	REV.	DESCRIPTION	QTY.
1	168-00115	1.0	Label Stock, Glassine, White, 35mm x 20mm	1

REVISIONS			
REV.	DESCRIPTION	DATE	APPROVED
1.0	Initial release	Jul 7, 2022	AC

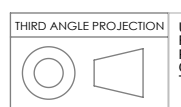


Notes:

- 1.Material: Glassine, White
- 2.Unit: mm
- 3.Font: Arial

Label info:

- 1.Model Name: Refer to the model name on the PO.
- 2.Part NO: Refer to the part number on the PO.
- 3.FCC ID approval
- 4.IC approval
- 5.Date code:SSYYWWD
SS: Supplier ID Number
YY: last two numbers of the year
WW: Week of the Year
D: Day of the Week
(ex: Sun=1, Mon=2, Tue=3, Wed=4, Thu=5, Fri=6, Sat=7)
- 6.Working order no.: CXXXXXXXXX
- 7.RX: Refer to the revision on the PO. Only the major code is printed on the label



UNLESS OTHERWISE NOTED, THIS DOCUMENT CONTAINS LAIRD EZURIO INFORMATION. REPRODUCTION, USE, DISCLOSURE OR TRANSMITTAL OF ALL OR ANY PART OF THIS DOCUMENT IS PROHIBITED EXCEPT TO THE EXTENT APPROVED IN WRITING BY AN AUTHORIZED REPRESENTATIVE OF EZURIO. EZURIO RESERVES ALL RIGHTS UNDER PATENTS, TRADEMARKS, COPYRIGHTS AND TRADE SECRETS. COPYRIGHT, EZURIO 2024, ALL RIGHTS RESERVED.

UNLESS OTHERWISE SPECIFIED:
DIMENSIONS ARE IN MILLIMETERS
TOLERANCES:
ANGULAR: ±.5
XX ±.2
X.XX ±.1

INTERPRET GEOMETRIC
TOLERANCING PER: ASME 14.5M

CAD FILE: AC4490-1000M-01

DATE: Jul 7, 2022
SHEET 1 OF 1



TITLE:
Label, PCBA, AC4x90 Series, 35mm x 20mm

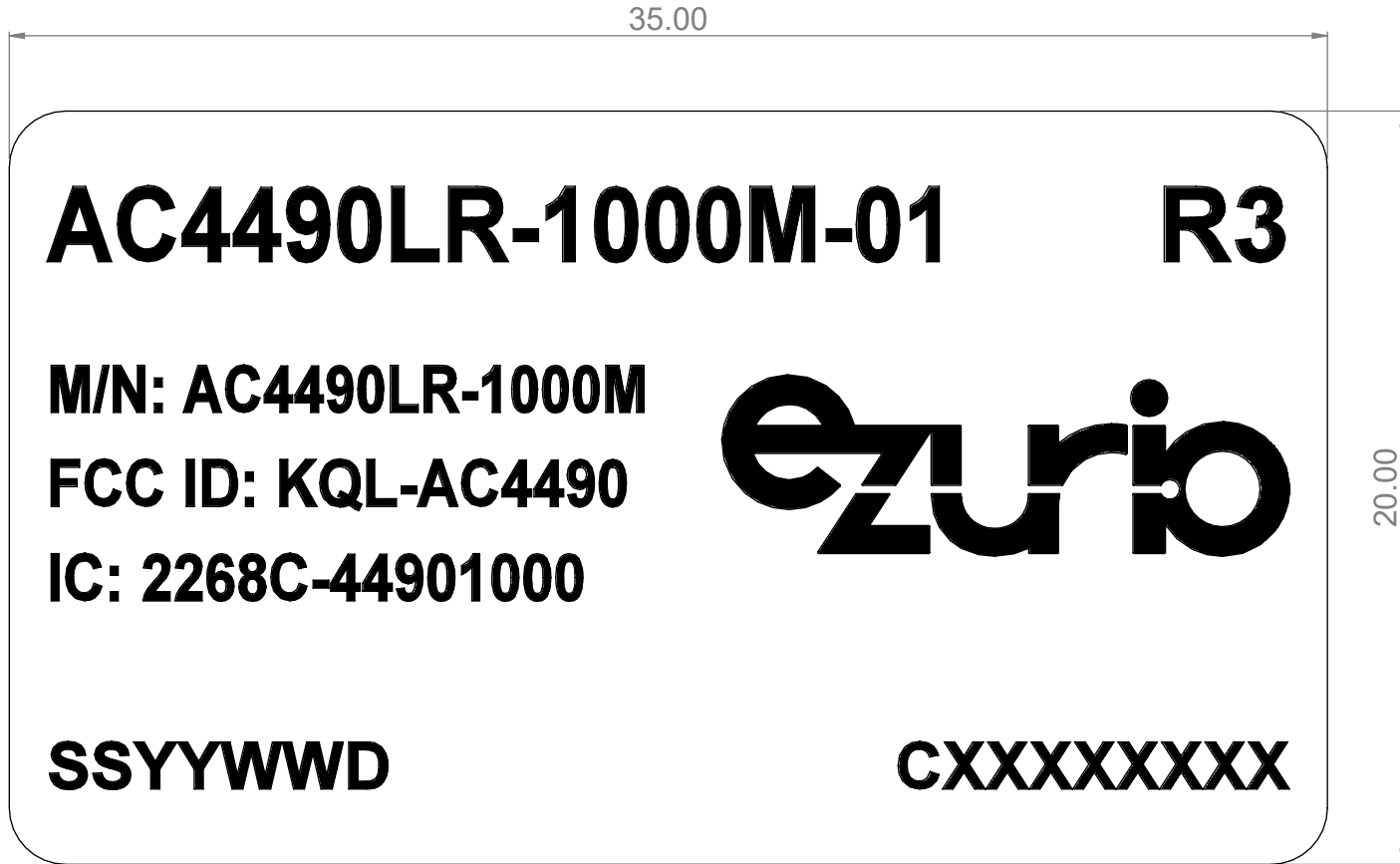
SIZE B	DWG. NO. 160-02343	REV 1.0
------------------	------------------------------	-------------------

F
E
D
C
B
A

8 7 6 5 4 3 2 1

ITEM NO.	PART NUMBER	REV.	DESCRIPTION	QTY.
1	168-00115	1.0	Label Stock, Glassine, White, 35mm x 20mm	1

REVISIONS			
REV.	DESCRIPTION	DATE	APPROVED
1.0	Initial release	Jul 7, 2022	AC

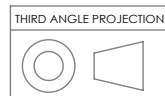


Notes:

- 1.Material: Glassine, White
- 2.Unit: mm
- 3.Font: Arial

Label info:

- 1.Model Name: Refer to the model name on the PO.
- 2.Part NO: Refer to the part number on the PO.
- 3.FCC ID approval
- 4.IC approval
- 5.Date code:SSYYWWD
SS: Supplier ID Number
YY: last two numbers of the year
WW: Week of the Year
D: Day of the Week
(ex: Sun=1, Mon=2, Tue=3, Wed=4, Thu=5, Fri=6, Sat=7)
- 6.Working order no.: CXXXXXXXXX
- 7.RX: Refer to the revision on the PO. Only the major code is printed on the label



UNLESS OTHERWISE NOTED, THIS DOCUMENT CONTAINS LAIRD EZURIO INFORMATION. REPRODUCTION, USE, DISCLOSURE OR TRANSMITTAL OF ALL OR ANY PART OF THIS DOCUMENT IS PROHIBITED EXCEPT TO THE EXTENT APPROVED IN WRITING BY AN AUTHORIZED REPRESENTATIVE OF EZURIO. EZURIO RESERVES ALL RIGHTS UNDER PATENTS, TRADEMARKS, COPYRIGHTS AND TRADE SECRETS. COPYRIGHT, EZURIO 2024, ALL RIGHTS RESERVED.

UNLESS OTHERWISE SPECIFIED:
DIMENSIONS ARE IN MILLIMETERS
TOLERANCES:
ANGULAR: ±.5
XX ±.2
X.XX ±.1

INTERPRET GEOMETRIC
TOLERANCING PER: ASME 14.5M

CAD FILE: AC4490LR-1000M-01
DATE: Jul 7, 2022
SHEET 1 OF 1

ezurio

Label, PCBA, AC4x90 Series, 35mm x 20mm

SIZE B	DWG. NO. 160-02343	REV 1.0
------------------	------------------------------	-------------------

8 7 6 5 4 3 2 1

F
E
D
C
B
A

8 7 6 5 4 3 2 1

ITEM NO.	PART NUMBER	REV.	DESCRIPTION	QTY.
1	168-00115	1.0	Label Stock, Glassine, White, 35mm x 20mm	1

REVISIONS			
REV.	DESCRIPTION	DATE	APPROVED
1.0	Initial release	Jul 7, 2022	AC

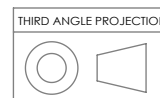


Notes:

- 1.Material: Glassine, White
- 2.Unit: mm
- 3.Font: Arial

Label info:

- 1.Model Name: Refer to the model name on the PO.
- 2.Part NO: Refer to the part number on the PO.
- 3.FCC ID approval
- 4.IC approval
- 5.Date code:SSYYWWD
 SS: Supplier ID Number
 YY: last two numbers of the year
 WW: Week of the Year
 D: Day of the Week
 (ex: Sun=1, Mon=2, Tue=3, Wed=4, Thu=5, Fri=6, Sat=7)
- 6.Working order no.: CXXXXXXXXX
- 7.RX: Refer to the revision on the PO. Only the major code is printed on the label



UNLESS OTHERWISE NOTED, THIS DOCUMENT CONTAINS LAIRD EZURIO INFORMATION. REPRODUCTION, USE, DISCLOSURE OR TRANSMITTAL OF ALL OR ANY PART OF THIS DOCUMENT IS PROHIBITED EXCEPT TO THE EXTENT APPROVED IN WRITING BY AN AUTHORIZED REPRESENTATIVE OF EZURIO. EZURIO RESERVES ALL RIGHTS UNDER PATENTS, TRADEMARKS, COPYRIGHTS AND TRADE SECRETS. COPYRIGHT, EZURIO 2024, ALL RIGHTS RESERVED.

UNLESS OTHERWISE SPECIFIED:
 DIMENSIONS ARE IN MILLIMETERS
 TOLERANCES:
 ANGULAR: ±.5
 X.X ±.2
 X.XX ±.1
 INTERPRET GEOMETRIC TOLERANCING PER: ASME 14.5M

CAD FILE: AC4790-1000M-01
 DATE: Jul 7, 2022
 SHEET 1 OF 1

TITLE:
Label, PCBA, AC4x90 Series, 35mm x 20mm
 SIZE: **B**
 DWG. NO.: **160-02343**
 REV: **1.0**



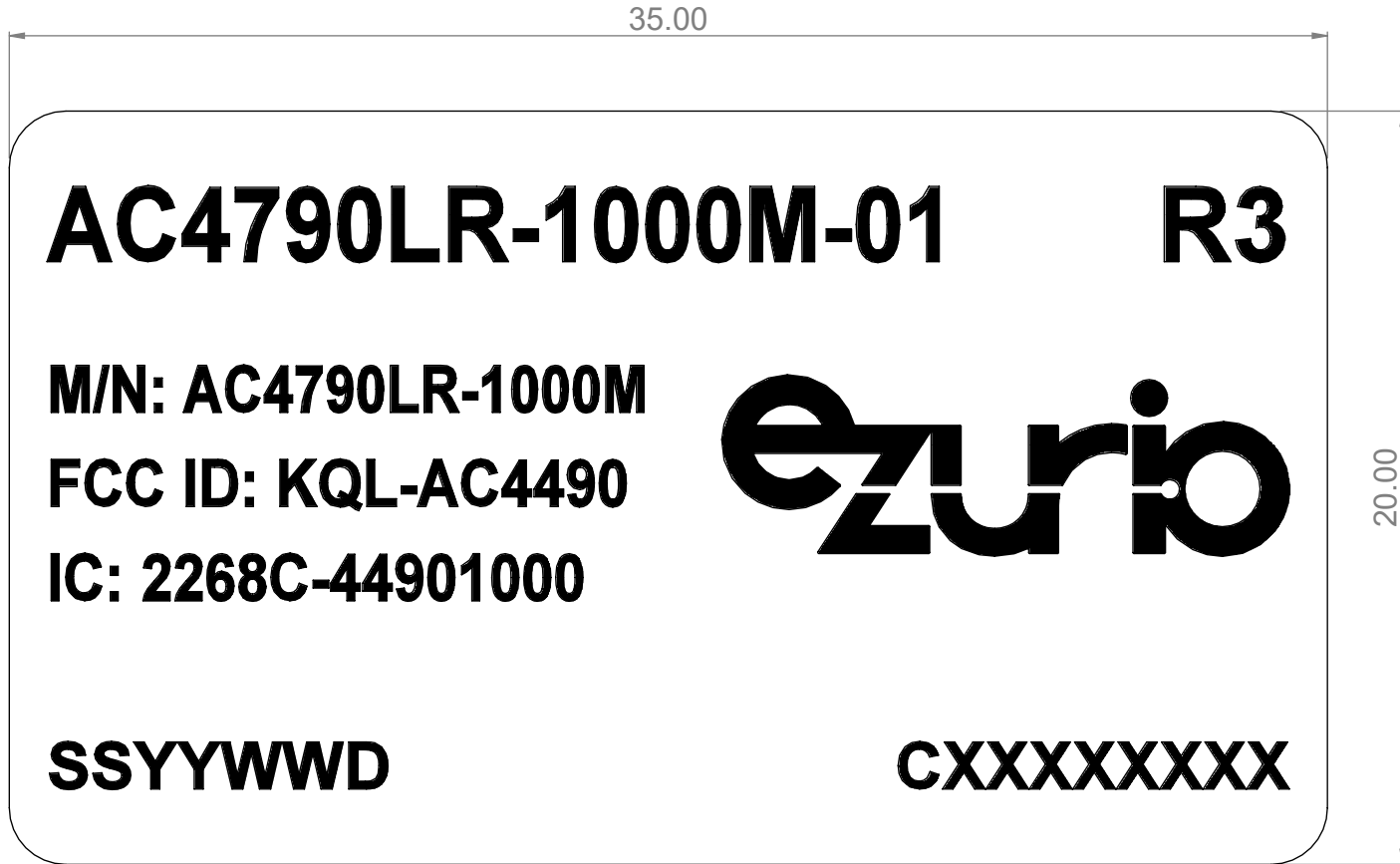
8 7 6 5 4 3 2 1

F
E
D
C
B
A

8 7 6 5 4 3 2 1

ITEM NO.	PART NUMBER	REV.	DESCRIPTION	QTY.
1	168-00115	1.0	Label Stock, Glassine, White, 35mm x 20mm	1

REVISIONS			
REV.	DESCRIPTION	DATE	APPROVED
1.0	Initial release	Jul 7, 2022	AC

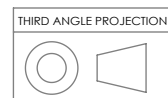


Notes:

- 1.Material: Glassine, White
- 2.Unit: mm
- 3.Font: Arial

Label info:

- 1.Model Name: Refer to the model name on the PO.
- 2.Part NO: Refer to the part number on the PO.
- 3.FCC ID approval
- 4.IC approval
- 5.Date code:SSYYWWD
SS: Supplier ID Number
YY: last two numbers of the year
WW: Week of the Year
D: Day of the Week
(ex: Sun=1, Mon=2, Tue=3, Wed=4, Thu=5, Fri=6, Sat=7)
- 6.Working order no.: CXXXXXXXXX
- 7.RX: Refer to the revision on the PO. Only the major code is printed on the label



UNLESS OTHERWISE NOTED, THIS DOCUMENT CONTAINS LAIRD EZURIO INFORMATION. REPRODUCTION, USE, DISCLOSURE OR TRANSMITTAL OF ALL OR ANY PART OF THIS DOCUMENT IS PROHIBITED EXCEPT TO THE EXTENT APPROVED IN WRITING BY AN AUTHORIZED REPRESENTATIVE OF EZURIO. EZURIO RESERVES ALL RIGHTS UNDER PATENTS, TRADEMARKS, COPYRIGHTS AND TRADE SECRETS. COPYRIGHT, EZURIO 2024, ALL RIGHTS RESERVED.

UNLESS OTHERWISE SPECIFIED:
DIMENSIONS ARE IN MILLIMETERS
TOLERANCES:
ANGULAR: ±.5
XX ±.2
X.XX ±.1

INTERPRET GEOMETRIC
TOLERANCING PER: ASME 14.5M

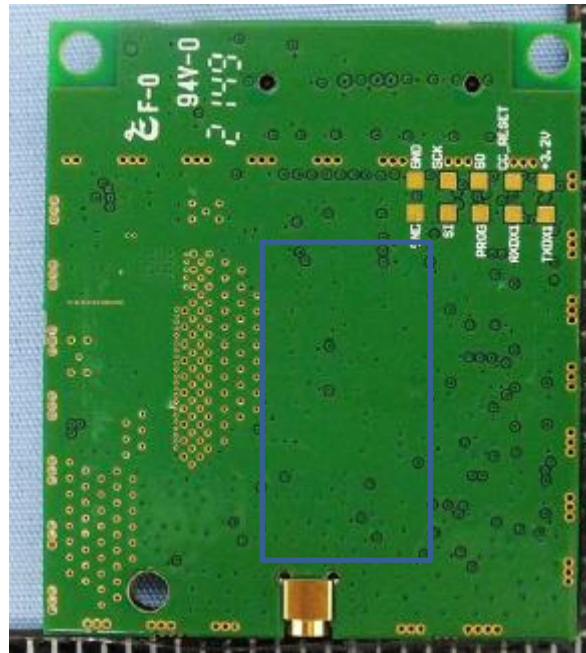
CAD FILE: AC4790LR-1000M-01
DATE: Jul 7, 2022
SHEET 1 OF 1

ezurio

Label, PCBA, AC4x90 Series, 35mm x 20mm

SIZE B	DWG. NO. 160-02343	REV 1.0
------------------	------------------------------	-------------------

8 7 6 5 4 3 2 1



FCC ID: KQL-AC4490

IC: 2268C-44901000