

F  
E  
D  
C  
B  
A

8 7 6 5 4 3 2 1

ITEM NO.	PART NUMBER	REV.	DESCRIPTION	QTY.
1	168-00115	1.0	Label Stock, Glassine, White, 35mm x 20mm	1

REVISIONS			
REV.	DESCRIPTION	DATE	APPROVED
1.0	Initial release	Jul 7, 2022	AC

35.00
20.00

**AC4490-1000M-01 R2**

**M/N: AC4490-1000M**

**FCC ID: KQL-AC4490**

**IC: 2268C-AC44901000**

**SSYYWWD**



**CONN**

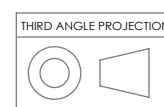
**CXXXXXXXXX**

**Notes:**

- 1.Material: Glassine, White
- 2.Unit: mm
- 3.Font: Arial

**Label info:**

- 1.Model Name: Refer to the model name on the PO.
- 2.Part NO: Refer to the part number on the PO.
- 3.FCC ID approval
- 4.IC approval
- 5.Date code:SSYYWWD
- SS: Supplier ID Number
- YY: last two numbers of the year
- WW: Week of the Year
- D: Day of the Week
- (ex: Sun=1, Mon=2, Tue=3, Wed=4, Thu=5, Fri=6, Sat=7)
- 6.Working order no.: CXXXXXXXXX
- 7.RX: Refer to the revision on the PO. Only the major code is printed on the label



UNLESS OTHERWISE NOTED, THIS DOCUMENT CONTAINS LAIRD CONNECTIVITY INFORMATION. REPRODUCTION, USE, DISCLOSURE OR TRANSMITTAL OF ALL OR ANY PART OF THIS DOCUMENT IS PROHIBITED EXCEPT TO THE EXTENT APPROVED IN WRITING BY AN AUTHORIZED REPRESENTATIVE OF LAIRD CONNECTIVITY. LAIRD CONNECTIVITY RESERVES ALL RIGHTS UNDER PATENTS, TRADEMARKS, COPY RIGHTS AND TRADE SECRETS. COPYRIGHT, LAIRD CONNECTIVITY 2020, ALL RIGHTS RESERVED.

UNIT: mm

UNLESS OTHERWISE SPECIFIED:  
 DIMENSIONS ARE IN MILLIMETERS  
 TOLERANCES:  
 ANGULAR: ±.5  
 X.X ±.2  
 X.XX ±.1

INTERPRET GEOMETRIC TOLERANCING PER: ASME 14.5M

CAD FILE: 160-02343

DATE: Jul 7, 2022

SHEET 1 OF 1 SCALE: 5:1

TITLE:  
**Label, PCBA, AC4x90 Series, 35mm x 20mm**

SIZE	DWG. NO.	REV
<b>B</b>	<b>160-02343</b>	<b>1.0</b>

8 7 6 5 4 3 2 1

F  
E  
D  
C  
B  
A

8 7 6 5 4 3 2 1

ITEM NO.	PART NUMBER	REV.	DESCRIPTION	QTY.
1	168-00115	1.0	Label Stock, Glassine, White, 35mm x 20mm	1

REVISIONS			
REV.	DESCRIPTION	DATE	APPROVED
1.0	Initial release	Jul 7, 2022	AC

35.00
20.00

**AC4490LR-1000M-01 R2**

**M/N: AC4490LR-1000M**

**FCC ID: KQL-AC4490**

**IC: 2268C-AC44901000**

**SSYYWWD**

**CONN**

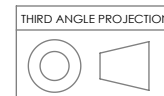
**CXXXXXXXXX**

**Notes:**

- 1.Material: Glassine, White
- 2.Unit: mm
- 3.Font: Arial

**Label info:**

- 1.Model Name: Refer to the model name on the PO.
- 2.Part NO: Refer to the part number on the PO.
- 3.FCC ID approval
- 4.IC approval
- 5.Date code:SSYYWWD
- SS: Supplier ID Number
- YY: last two numbers of the year
- WW: Week of the Year
- D: Day of the Week
- (ex: Sun=1, Mon=2, Tue=3, Wed=4, Thu=5, Fri=6, Sat=7)
- 6.Working order no.: CXXXXXXXXX
- 7.RX: Refer to the revision on the PO. Only the major code is printed on the label



UNLESS OTHERWISE NOTED, THIS DOCUMENT CONTAINS LAIRD CONNECTIVITY INFORMATION. REPRODUCTION, USE, DISCLOSURE OR TRANSMITTAL OF ALL OR ANY PART OF THIS DOCUMENT IS PROHIBITED EXCEPT TO THE EXTENT APPROVED IN WRITING BY AN AUTHORIZED REPRESENTATIVE OF LAIRD CONNECTIVITY. LAIRD CONNECTIVITY RESERVES ALL RIGHTS UNDER PATENTS, TRADEMARKS, COPY RIGHTS AND TRADE SECRETS. COPYRIGHT, LAIRD CONNECTIVITY 2020, ALL RIGHTS RESERVED.

UNIT: mm

UNLESS OTHERWISE SPECIFIED:  
 DIMENSIONS ARE IN MILLIMETERS  
 TOLERANCES:  
 ANGULAR: ±.5  
 X.X ±.2  
 X.XX ±.1

CAD FILE: 160-02343  
 DATE: Jul 7, 2022  
 SHEET 1 OF 1 SCALE: 5:1

TITLE:  
**Label, PCBA, AC4x90 Series, 35mm x 20mm**

SIZE	DWG. NO.	REV
<b>B</b>	<b>160-02343</b>	<b>1.0</b>

8 7 6 5 4 3 2 1

F  
E  
D  
C  
B  
A

8 7 6 5 4 3 2 1

ITEM NO.	PART NUMBER	REV.	DESCRIPTION	QTY.
1	168-00115	1.0	Label Stock, Glassine, White, 35mm x 20mm	1

REVISIONS			
REV.	DESCRIPTION	DATE	APPROVED
1.0	Initial release	Jul 7, 2022	AC

35.00
20.00

**AC4790-1000M-01      R2**

**M/N: AC4790-1000M**

**FCC ID: KQL-AC4490**

**IC: 2268C-AC44901000**

**SSYYWWD**

**CONN**

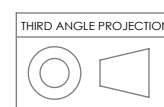
**CXXXXXXXXX**

**Notes:**

- 1.Material: Glassine, White
- 2.Unit: mm
- 3.Font: Arial

**Label info:**

- 1.Model Name: Refer to the model name on the PO.
- 2.Part NO: Refer to the part number on the PO.
- 3.FCC ID approval
- 4.IC approval
- 5.Date code:SSYYWWD
- SS: Supplier ID Number
- YY: last two numbers of the year
- WW: Week of the Year
- D: Day of the Week
- (ex: Sun=1, Mon=2, Tue=3, Wed=4, Thu=5, Fri=6, Sat=7)
- 6.Working order no.: CXXXXXXXXX
- 7.RX: Refer to the revision on the PO. Only the major code is printed on the label



UNLESS OTHERWISE NOTED, THIS DOCUMENT CONTAINS LAIRD CONNECTIVITY INFORMATION. REPRODUCTION, USE, DISCLOSURE OR TRANSMITTAL OF ALL OR ANY PART OF THIS DOCUMENT IS PROHIBITED EXCEPT TO THE EXTENT APPROVED IN WRITING BY AN AUTHORIZED REPRESENTATIVE OF LAIRD CONNECTIVITY. LAIRD CONNECTIVITY RESERVES ALL RIGHTS UNDER PATENTS, TRADEMARKS, COPY RIGHTS AND TRADE SECRETS. COPYRIGHT, LAIRD CONNECTIVITY 2020, ALL RIGHTS RESERVED.

UNIT: mm

UNLESS OTHERWISE SPECIFIED:  
 DIMENSIONS ARE IN MILLIMETERS  
 TOLERANCES:  
 ANGULAR: ±.5  
 X.X ±.2  
 X.XX ±.1

INTERPRET GEOMETRIC TOLERANCING PER: ASME 14.5M

CAD FILE: 160-02343

DATE: Jul 7, 2022

SHEET 1 OF 1    SCALE: 5:1

TITLE:  
**Label, PCBA, AC4x90 Series, 35mm x 20mm**

SIZE	DWG. NO.	REV
<b>B</b>	<b>160-02343</b>	<b>1.0</b>

8 7 6 5 4 3 2 1

F  
E  
D  
C  
B  
A

8 7 6 5 4 3 2 1

ITEM NO.	PART NUMBER	REV.	DESCRIPTION	QTY.
1	168-00115	1.0	Label Stock, Glassine, White, 35mm x 20mm	1

REVISIONS			
REV.	DESCRIPTION	DATE	APPROVED
1.0	Initial release	Jul 7, 2022	AC

35.00
20.00

AC4790LR-1000M-01 R2

M/N: AC4790LR-1000M

FCC ID: KQL-AC4490

IC: 2268C-AC44901000

SSYYWWD

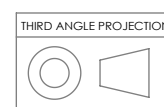
CXXXXXXXXX

**Notes:**

- 1. Material: Glassine, White
- 2. Unit: mm
- 3. Font: Arial

**Label info:**

- 1. Model Name: Refer to the model name on the PO.
- 2. Part NO: Refer to the part number on the PO.
- 3. FCC ID approval
- 4. IC approval
- 5. Date code: SSYYWWD
- SS: Supplier ID Number
- YY: last two numbers of the year
- WW: Week of the Year
- D: Day of the Week
- (ex: Sun=1, Mon=2, Tue=3, Wed=4, Thu=5, Fri=6, Sat=7)
- 6. Working order no.: CXXXXXXXXX
- 7. RX: Refer to the revision on the PO. Only the major code is printed on the label



UNLESS OTHERWISE NOTED, THIS DOCUMENT CONTAINS LAIRD CONNECTIVITY INFORMATION. REPRODUCTION, USE, DISCLOSURE OR TRANSMITTAL OF ALL OR ANY PART OF THIS DOCUMENT IS PROHIBITED EXCEPT TO THE EXTENT APPROVED IN WRITING BY AN AUTHORIZED REPRESENTATIVE OF LAIRD CONNECTIVITY. LAIRD CONNECTIVITY RESERVES ALL RIGHTS UNDER PATENTS, TRADEMARKS, COPY RIGHTS AND TRADE SECRETS. COPYRIGHT, LAIRD CONNECTIVITY 2020, ALL RIGHTS RESERVED.

UNIT: mm

UNLESS OTHERWISE SPECIFIED:  
 DIMENSIONS ARE IN MILLIMETERS  
 TOLERANCES:  
 ANGULAR: ±.5  
 X.X ±.2  
 X.XX ±.1

INTERPRET GEOMETRIC TOLERANCING PER: ASME 14.5M

CAD FILE: 160-02343

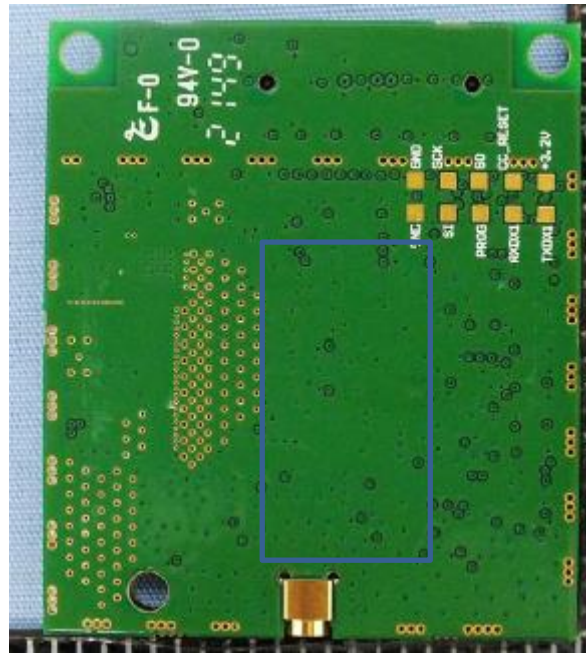
DATE: Jul 7, 2022

SHEET 1 OF 1 SCALE: 5:1

TITLE:  
**Label, PCBA, AC4x90 Series, 35mm x 20mm**

SIZE	DWG. NO.	REV
<b>B</b>	<b>160-02343</b>	<b>1.0</b>

8 7 6 5 4 3 2 1



FCC ID: KQL-AC4490

IC: 2268C-44901000