

DO NOT SCALE

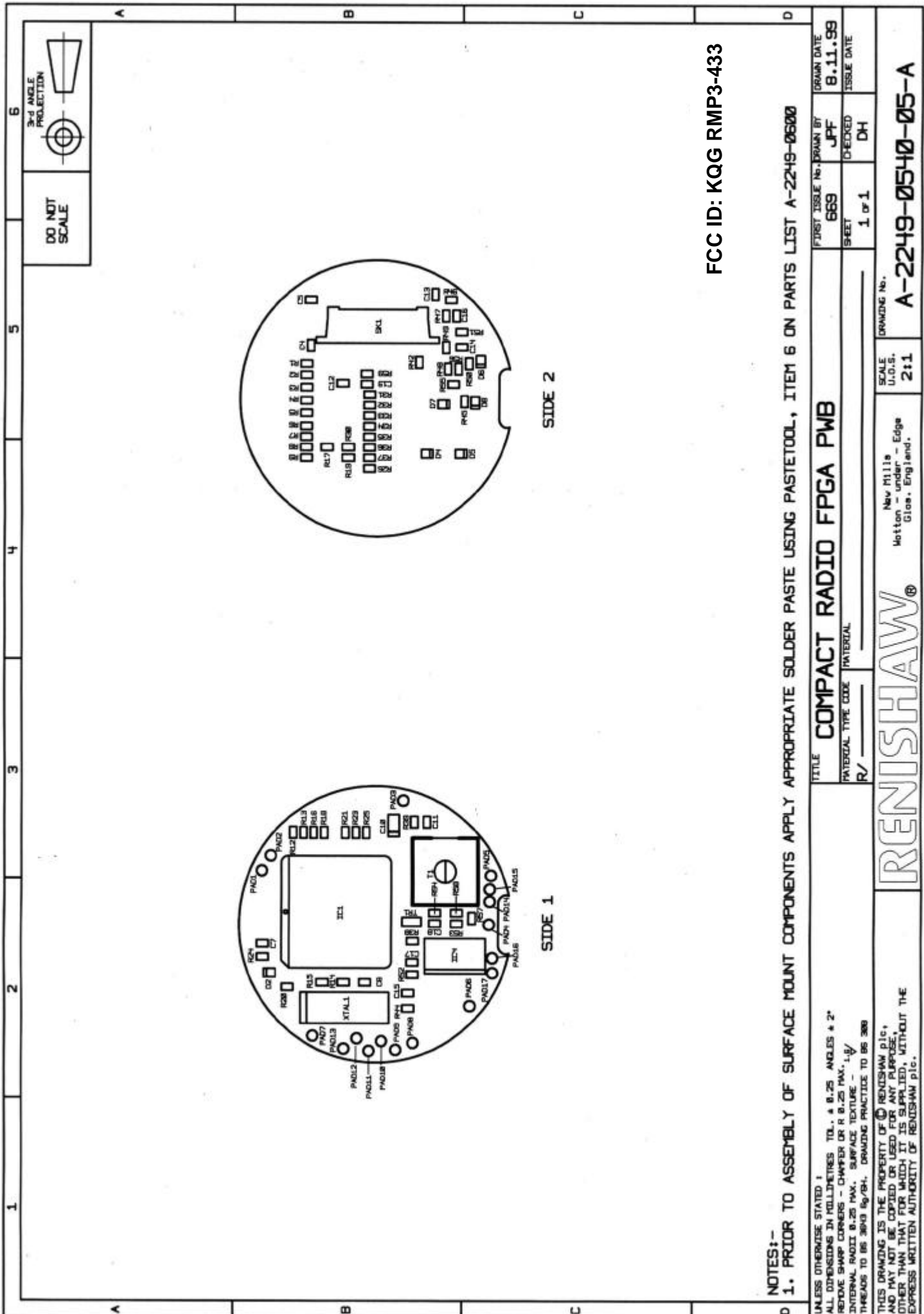


FCC ID: KQG RMP3-433

NOTES:-  
 1. PRIOR TO ASSEMBLY OF SURFACE MOUNT COMPONENTS APPLY APPROPRIATE SOLDER PASTE USING PASTETOOL, ITEM 61.  
 2. COMPONENT L2 TO BE HAND FITTED.  
 3. PWB POSITIONED FLUSH WITH INSIDE LIP OF SCREENING CAN, AND SOLDERED AT PADS TO CAN IN 11 POSITIONS.  
 4. COMPONENT C15 NOT FITTED.

TITLE <b>COMPACT RADIO 433MHZ TX PWB</b>		FIRST ISSUE NO. DRAWN BY 686 M M	DRAWN DATE 15 02 00
INTERVAL TYPE CODE INTERVAL R/		SHEET 1 of 1	CHECKED BP
SCALE U.O.S. 2:1		DRAWING No. New Millis Wotton - Under - Edge Glos. England.	
<b>RENISHAW®</b>		A-2249-0660-01-A	
		THIS DRAWING IS THE PROPERTY OF RENISHAW plc, AND MAY NOT BE COPIED OR USED FOR ANY PURPOSE, OTHER THAN THAT FOR WHICH IT IS SUPPLIED, WITHOUT THE EXPRESS WRITTEN AUTHORITY OF RENISHAW plc.	

UNLESS OTHERWISE STATED:  
 ALL DIMENSIONS IN MILLIMETRES TOL. ± 0.25 ANGLES ± 2°  
 REMOVE SHARP CORNERS - CHAMFER OR R 0.25 MAX.  
 INTERNAL RAOII 0.25 MAX. SURFACE TEXTURE - L<sub>1</sub>  
 THREADS TO BS 3043 8g/7h. DRAWING PRACTICE TO BS 388



FCC ID: KQG RMP3-433

**NOTES:-**

1. PRIOR TO ASSEMBLY OF SURFACE MOUNT COMPONENTS APPLY APPROPRIATE SOLDER PASTE USING PASTETOOL, ITEM 6 ON PARTS LIST A-2249-0600

UNLESS OTHERWISE STATED :  
 ALL DIMENSIONS IN MILLIMETRES TOL. ± 0.25 ANGLES ± 2°  
 REMOVE SHARP CORNERS - CHAMFER OR R 0.25 MAX., 1:8/  
 INTERNAL RADIUS 0.25 MAX. SURFACE TEXTURE - 1.6/  
 THREADS TO BS 3643 5g/7H. DRAWING PRACTICE TO BS 368

THIS DRAWING IS THE PROPERTY OF RENISHAW plc,  
 AND MAY NOT BE COPIED OR USED FOR ANY PURPOSE,  
 OTHER THAN THAT FOR WHICH IT IS SUPPLIED, WITHOUT THE  
 EXPRESS WRITTEN AUTHORITY OF RENISHAW plc.

TITLE	COMPACT RADIO FPGA PWB	FIRST ISSUE NO.	669	DRAWN BY	JPF	DRAWN DATE	8.11.99
MATERIAL TYPE CODE	R/	SHEET	1 OF 1	CHECKED	DH	ISSUE DATE	

SCALE 2:1  
 U.O.S.  
 New Mills  
 Motton - Under - Edge  
 Gloss., England.

**RENISHAW®**

A-2249-0540-05-A

1

2

3

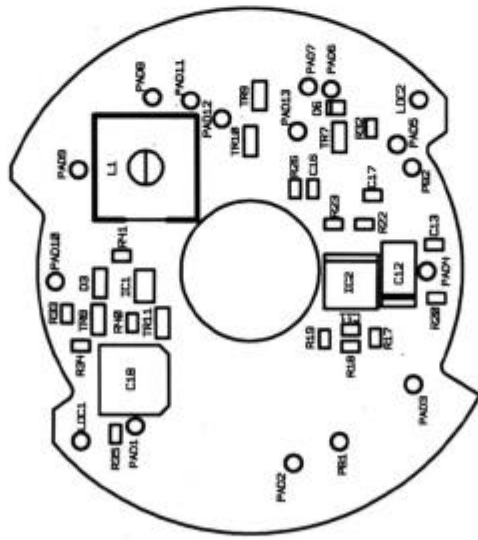
4

5

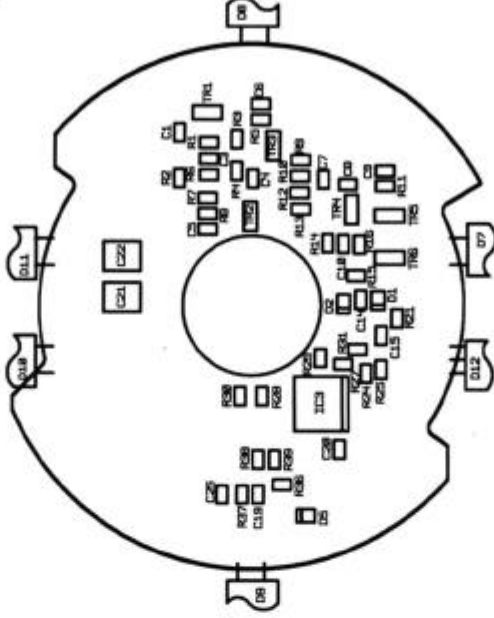
6

USED ON

DO NOT SCALE



SIDE 1



SIDE 2

FCC ID: KQG RMP3-433

NOTES:  
1. APPLY APPROPRIATE SOLDER PASTE TO SIDES 1 & 2 PRIOR TO ASSEMBLY OF COMPONENTS USING PASTETOOL, ITEM 6 ON PARTS LIST A-2249-0600.  
2. COMPONENTS P81, P82, D7, D8, D9, D10, D11 & D12 ARE NOT FITTED AT THIS LEVEL.

TITLE		COMPACT RADIO - OPTIC PWB		FIRST ISSUE No.	669	DRAWN BY	KDT	DRAWN DATE	22/8/00
MATERIAL TYPE CODE		MATERIAL		SHEET	1 OF 1	CHECKED	DMH	ISSUE DATE	
R/									

UNLESS OTHERWISE STATED: 1. ALL DIMENSIONS IN MILLIMETRES. 2. ALL DIMENSIONS IN MILLIMETRES. 3. TOL. ± 0.25 ANGLES ± 2°. 4. REMOVE SWAMP CORNERS - CHAMFER OR R 0.25 MAX. 5. INTERNAL RADIUS 0.25 MAX. 6. SURFACE TEXTURE - 1.6. 7. THREADS TO BS 3643 59/SH. 8. DRAWING PRACTICE TO BS 3089.

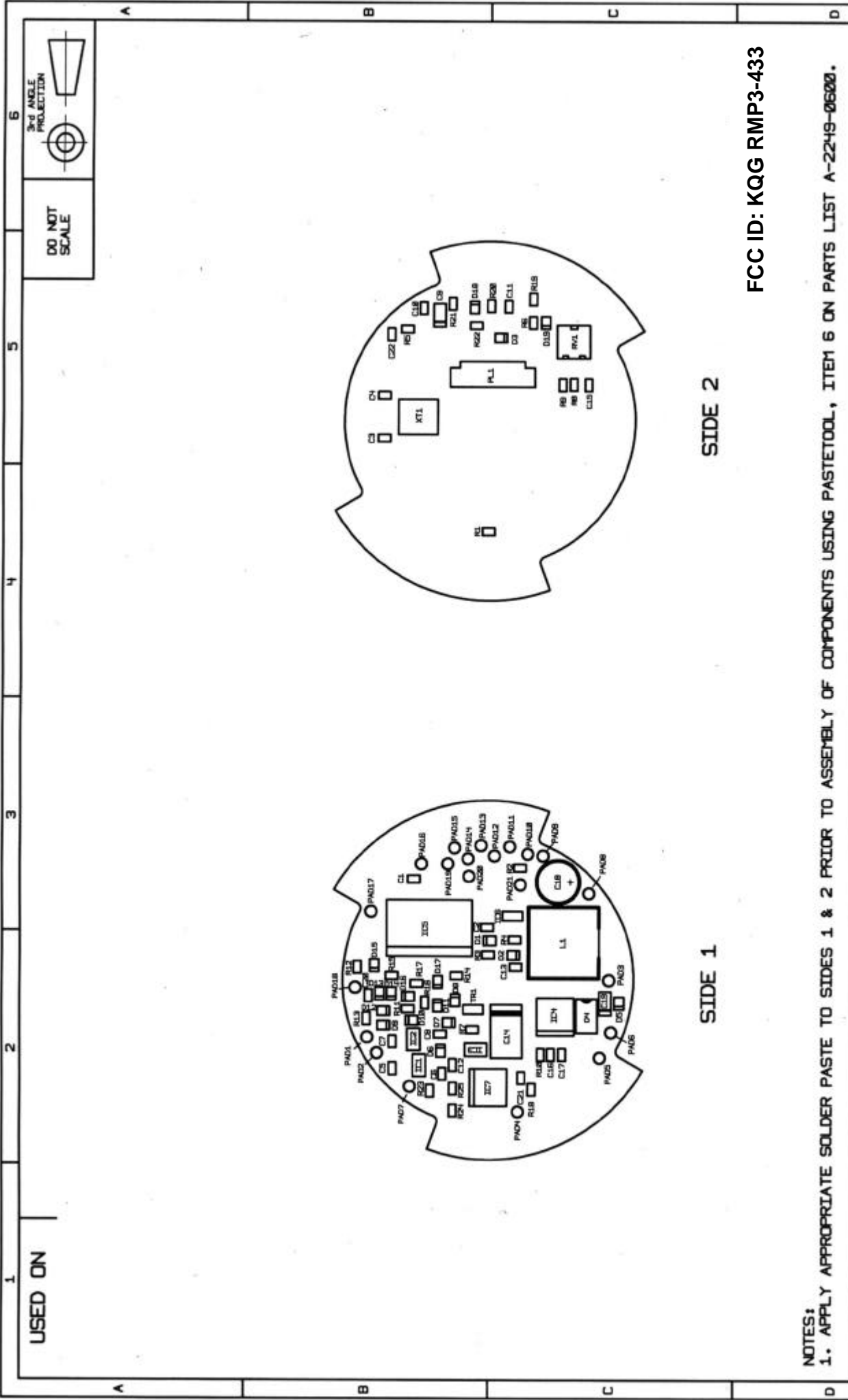
THIS DRAWING IS THE PROPERTY OF RENISHAW plc, AND MAY NOT BE COPIED OR USED FOR ANY PURPOSE, OTHER THAN THAT FOR WHICH IT IS SUPPLIED, WITHOUT THE EXPRESS WRITTEN AUTHORITY OF RENISHAW plc.

SCALE: U.O.S. 2:1

New Mills  
Hotton - under - Edge  
Glos., England.

**RENISHAW®**

**A-2249-0500-03-C**



FCC ID: KQG RMP3-433

SIDE 2

SIDE 1

**NOTES:**

1. APPLY APPROPRIATE SOLDER PASTE TO SIDES 1 & 2 PRIOR TO ASSEMBLY OF COMPONENTS USING PASTETOOL, ITEM 6 ON PARTS LIST A-2249-06000.

UNLESS OTHERWISE STATED :  
 ALL DIMENSIONS IN MILLIMETRES TOL. ± 0.25 ANGLES ± 2°  
 REMOVE SHARP CORNERS - CHAMFER OR R 0.25 MAX. 1:1  
 INTERNAL RADIUS 0.25 MAX. SURFACE TEXTURE - 1.6  
 THREADS TO BS 3643 Sp/9H. DRAWING PRACTICE TO BS 3089

THIS DRAWING IS THE PROPERTY OF RENISHAW plc.  
 AND MAY NOT BE COPIED OR USED FOR ANY PURPOSE,  
 OTHER THAN THAT FOR WHICH IT IS SUPPLIED, WITHOUT THE  
 EXPRESS WRITTEN AUTHORITY OF RENISHAW plc.

TITLE <b>COMPACT RADIO - POWER/PIC PWB</b>		FIRST ISSUE NO. 669	DRAWN BY JRM	DRAWN DATE 8.11.99
MATERIAL TYPE CODE R/	MATERIAL	SHEET 1 OF 1	CHECKED DH	ISSUE DATE

SCALE  
U.O.S.  
2:1

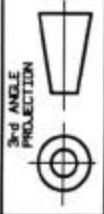
New Mills  
Motton - under - Edge  
Glos. England.

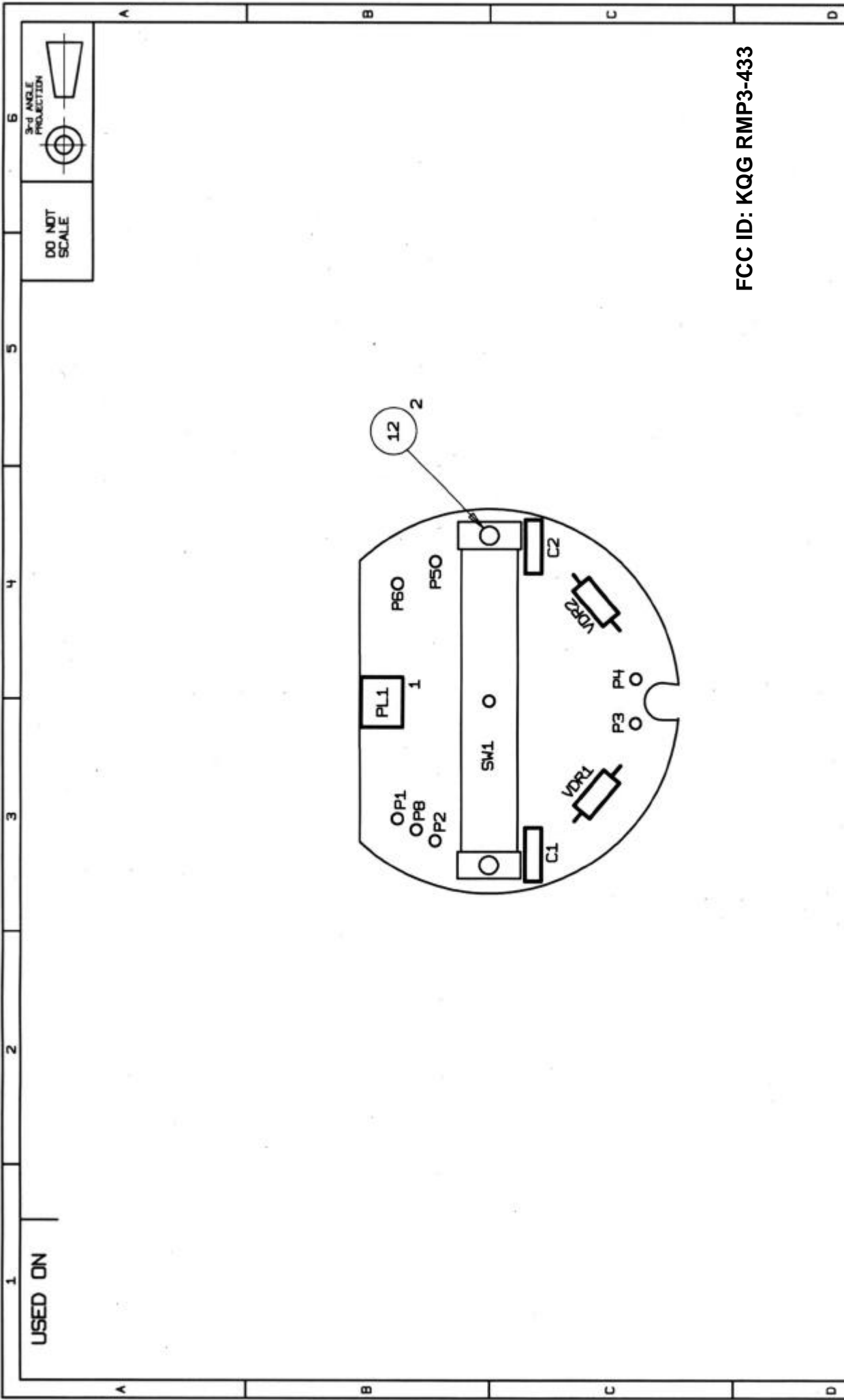
DRAMAING No.  
**A-2249-0520-03-B**

**RENISHAW®**

USED ON

DO NOT SCALE





USED ON

DO NOT SCALE



FCC ID: KQG RMP3-433

UNLESS OTHERWISE STATED: ALL DIMENSIONS IN MILLIMETRES TOL. ± 0.25 ANGLES ± 2° REMOVE SHARP CORNERS - CHAMFER OR R 0.25 MAX., 1:4 INTERNAL RADII 0.25 MAX. SURFACE TEXTURE - 1.6 THREADS TO BS 3643 69/74. DRAWING PRACTICE TO BS 308		TITLE <b>CENTRIFUGAL SWITCH PWB</b>		FIRST ISSUE No. 683	DRAWN BY JFF	ISSUE DATE JAN 00
THIS DRAWING IS THE PROPERTY OF RENISHAW plc, AND MAY NOT BE COPIED OR USED FOR ANY PURPOSE, OTHER THAN THAT FOR WHICH IT IS SUPPLIED, WITHOUT THE EXPRESS WRITTEN AUTHORITY OF RENISHAW plc.		DRAWING No. <b>A-2249-0580-03-A</b>		SHEET 1 OF 1	CHECKED BP	ISSUE DATE
SCALE U.O.S. 2:1		RENI SHAW® New Mills Wotton - under - Edge Glouc., England.				