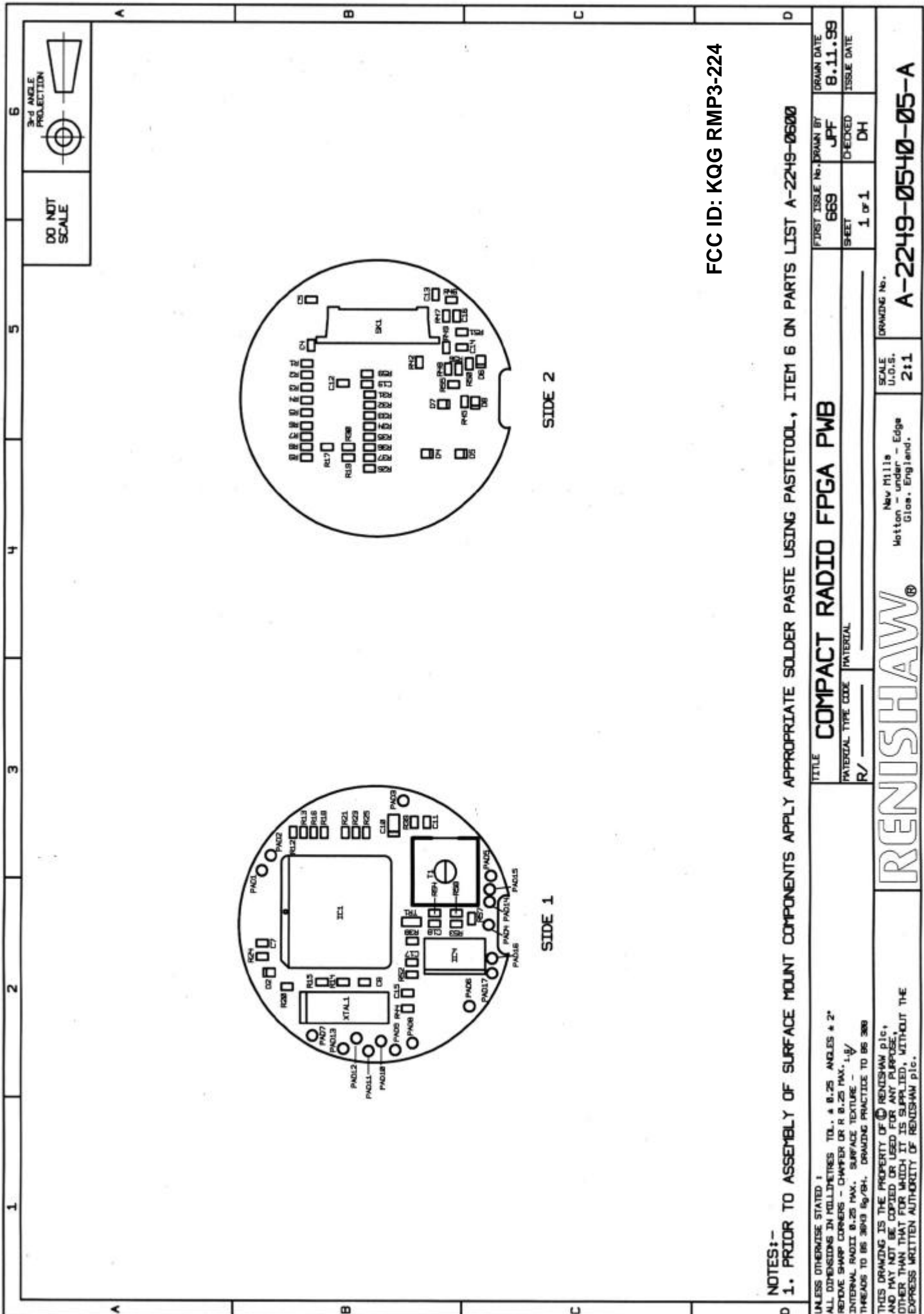


FCC ID: KQG RMP3-224

- NOTES:-
1. PRIOR TO ASSEMBLY OF SURFACE MOUNT COMPONENTS APPLY APPROPRIATE SOLDER PASTE USING PASTETOOL, ITEM 61.
  2. COMPONENT L2 TO BE HAND FITTED.
  3. PWB POSITIONED FLUSH WITH INSIDE LIP OF SCREENING CAN, AND SOLDERED AT PADS TO CAN IN 11 POSITIONS.
  4. COMPONENT C15 NOT FITTED.

TITLE		COMPACT RADIO 432ML7 TX PWB		FIRST ISSUE NO.	686	DRAWN BY	M M	DRAWN DATE	15 02 00
INTERVAL TYPE CODE		R/		SHEET	1 of 1	CHECKED	BP	ISSUE DATE	
SCALE		U.O.S.		DRAWING No.					
2:1		New Millis		Metton - Jorder - Edge					
Glos. England.		RENISHAW®							
THIS DRAWING IS THE PROPERTY OF RENISHAW plc, AND MAY NOT BE COPIED OR USED FOR ANY PURPOSE, OTHER THAN THAT FOR WHICH IT IS SUPPLIED, WITHOUT THE EXPRESS WRITTEN AUTHORITY OF RENISHAW plc.									
A									
3									

A-2249-0680-01-A



FCC ID: KQG RMP3-224

NOTES:-

1. PRIOR TO ASSEMBLY OF SURFACE MOUNT COMPONENTS APPLY APPROPRIATE SOLDER PASTE USING PASTETOOL, ITEM 6 ON PARTS LIST A-2249-0600

UNLESS OTHERWISE STATED :  
 ALL DIMENSIONS IN MILLIMETRES TOL. ± 0.25 ANGLES ± 2°  
 REMOVE SHARP CORNERS - CHAMFER OR R 0.25 MAX., 1:1  
 INTERNAL RADIUS 0.25 MAX. SURFACE TEXTURE - 1.6  
 THREADS TO BS 3643 5g/7H. DRAWING PRACTICE TO BS 368

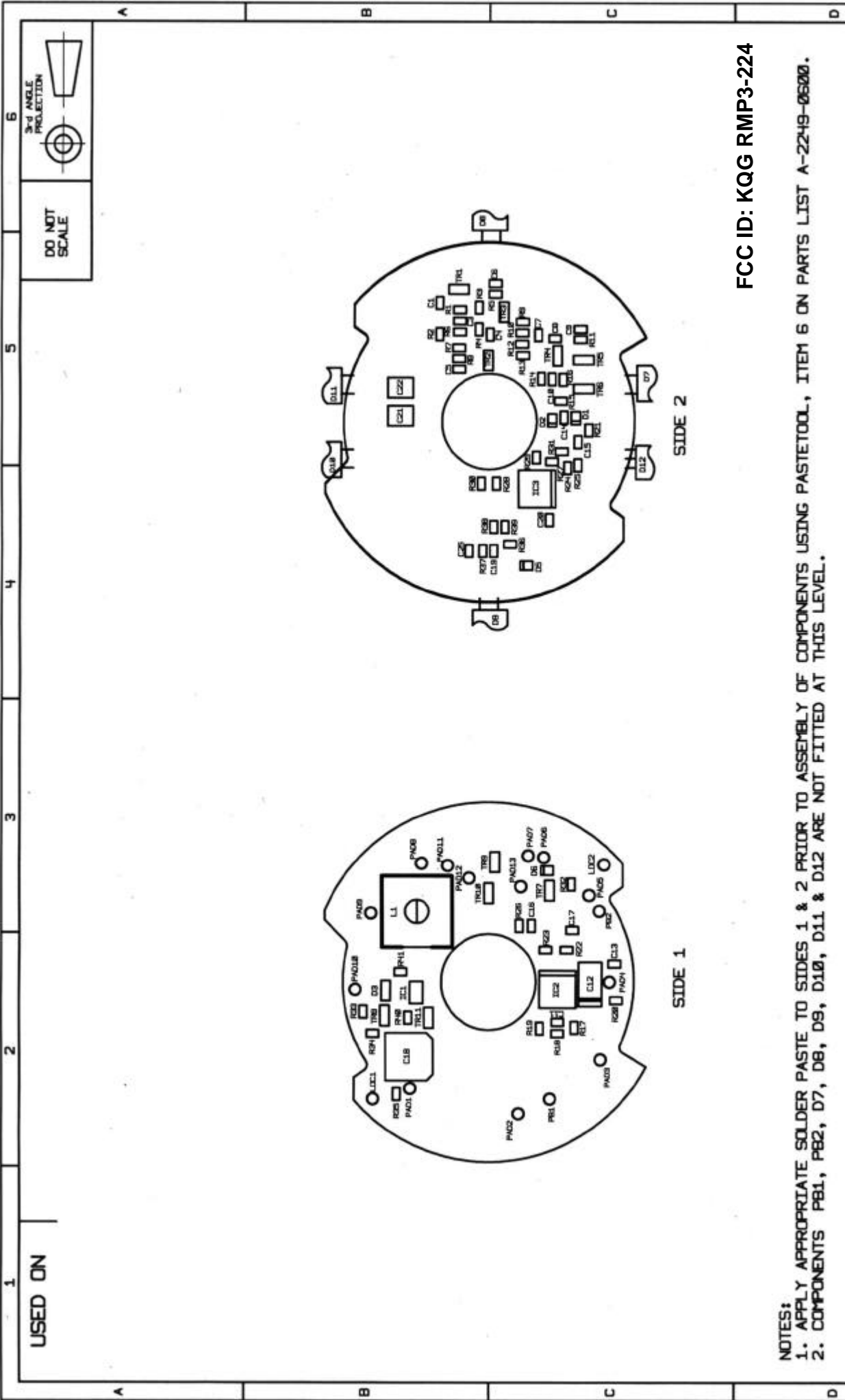
THIS DRAWING IS THE PROPERTY OF RENISHAW plc,  
 AND MAY NOT BE COPIED OR USED FOR ANY PURPOSE,  
 OTHER THAN THAT FOR WHICH IT IS SUPPLIED, WITHOUT THE  
 EXPRESS WRITTEN AUTHORITY OF RENISHAW plc.

TITLE	COMPACT RADIO FPGA PWB	FIRST ISSUE NO.	669	DRAWN BY	JPF	DRAWN DATE	8.11.99
MATERIAL TYPE CODE	R/	SHEET	1 OF 1	CHECKED	DH	ISSUE DATE	

SCALE 2:1  
 U.O.S.  
 New Mills  
 Hotton - Under - Edge  
 Gloss., England.

DRAWING NO.  
**A-2249-0540-05-A**

RENISHAW®



FCC ID: KQG RMP3-224

**NOTES:**  
 1. APPLY APPROPRIATE SOLDER PASTE TO SIDES 1 & 2 PRIOR TO ASSEMBLY OF COMPONENTS USING PASTETOOL, ITEM 6 ON PARTS LIST A-2249-0600.  
 2. COMPONENTS P81, P82, D7, D8, D9, D10, D11 & D12 ARE NOT FITTED AT THIS LEVEL.

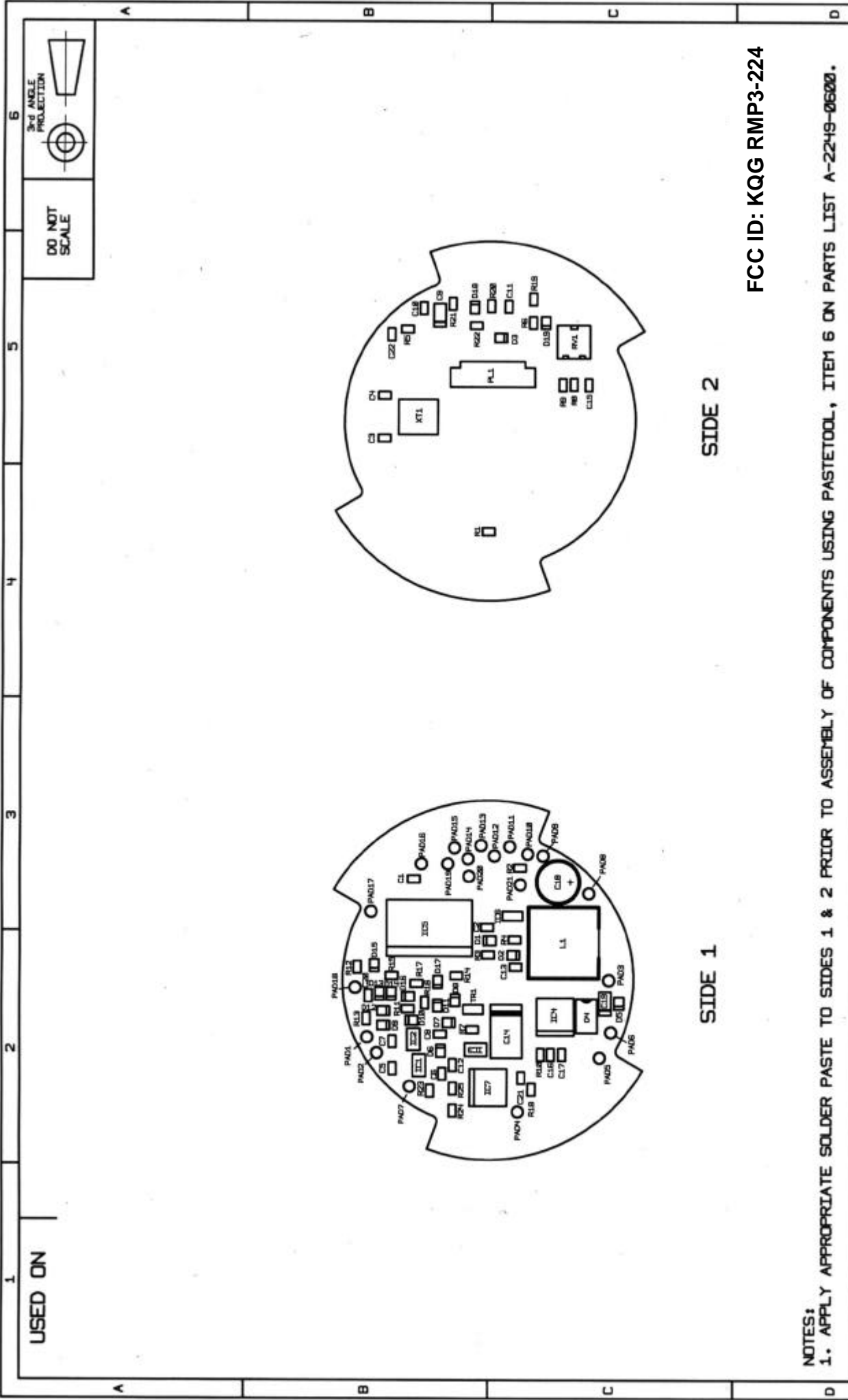
UNLESS OTHERWISE STATED: ALL DIMENSIONS IN MILLIMETRES TOL. ± 0.25 ANGLES ± 2° REMOVE SWAMP CORNERS - CHAMFER OR R 0.25 MAX. ± 0.1 INTERNAL RADIUS 0.25 MAX. SURFACE TEXTURE - 1.6 THREADS TO BS 3643 59/SH. DRAWING PRACTICE TO BS 308	TITLE <b>COMPACT RADIO - OPTIC PWB</b>		FIRST ISSUE No. DRAWN BY 669 KDT	DRAWN DATE 22/8/00
	MATERIAL TYPE CODE MATERIAL R/		CHECKED 1 OF 1 DMH	ISSUE DATE

THIS DRAWING IS THE PROPERTY OF RENISHAW plc, AND MAY NOT BE COPIED OR USED FOR ANY PURPOSE, OTHER THAN THAT FOR WHICH IT IS SUPPLIED, WITHOUT THE EXPRESS WRITTEN AUTHORITY OF RENISHAW plc.

**RENISHAW®**

New Mills  
 Hotton - under - Edge  
 Glos., England.  
 SCALE  
 U.O.S. 2:1

DRAWING No.  
**A-2249-0500-03-C**



FCC ID: KQG RMP3-224

SIDE 2

SIDE 1

NOTES:

1. APPLY APPROPRIATE SOLDER PASTE TO SIDES 1 & 2 PRIOR TO ASSEMBLY OF COMPONENTS USING PASTETOOL, ITEM 6 ON PARTS LIST A-2249-06000.

UNLESS OTHERWISE STATED:  
 ALL DIMENSIONS IN MILLIMETRES TOL. ± 0.25 ANGLES ± 2°  
 REMOVE SHARP CORNERS - CHAMFER OR R 0.25 MAX. 1.5/  
 INTERNAL RADIUS 0.25 MAX. SURFACE TEXTURE - 1.6/  
 THREADS TO BS 3643 Sp/9H. DRAWING PRACTICE TO BS 3089

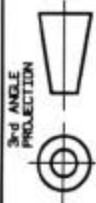
THIS DRAWING IS THE PROPERTY OF RENISHAW plc.  
 AND MAY NOT BE COPIED OR USED FOR ANY PURPOSE,  
 OTHER THAN THAT FOR WHICH IT IS SUPPLIED, WITHOUT THE  
 EXPRESS WRITTEN AUTHORITY OF RENISHAW plc.

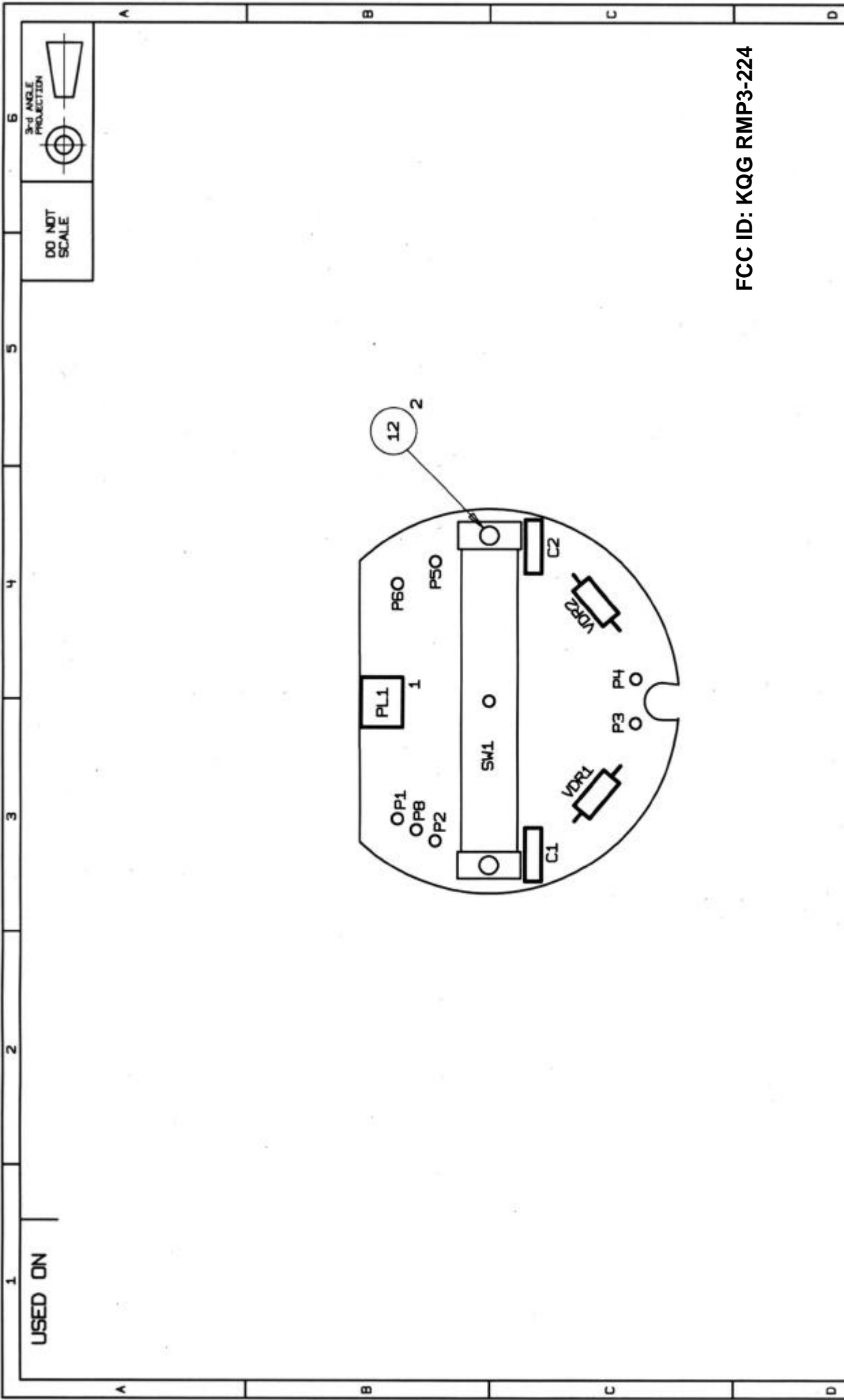
TITLE <b>COMPACT RADIO - POWER/PIC PWB</b>		FIRST ISSUE NO. 669	DRAWN BY JRM	DRAWN DATE 8.11.99
MATERIAL TYPE CODE R/		SHEET 1 OF 1	CHECKED DH	ISSUE DATE
SCALE U.O.S. 2:1		DRAWING No. A-2249-0520-03-B		
New Millis Motton - under - Edge Glos. England.				

**RENISHAW**<sup>®</sup>

USED ON

DO NOT SCALE





FCC ID: KQG RMP3-224

UNLESS OTHERWISE STATED: ALL DIMENSIONS IN MILLIMETRES TOL. ± 0.25 ANGLES ± 2° REMOVE SHARP CORNERS - CHAMFER OR R 0.25 MAX., 1:4 INTERNAL RADIUS 0.25 MAX. SURFACE TEXTURE - 1.6 THREADS TO BS 3643 69/74. DRAWING PRACTICE TO BS 308		TITLE <b>CENTRIFUGAL SWITCH PWB</b>		FIRST ISSUE No. 683	DRAWN BY JFF	ISSUE DATE JAN 00
THIS DRAWING IS THE PROPERTY OF RENISHAW plc, AND MAY NOT BE COPIED OR USED FOR ANY PURPOSE, OTHER THAN THAT FOR WHICH IT IS SUPPLIED, WITHOUT THE EXPRESS WRITTEN AUTHORITY OF RENISHAW plc.		DRAWING No. <b>A-2249-0580-03-A</b>		SHEET 1 OF 1	CHECKED BP	ISSUE DATE
REMOVED		SCALE U.O.S. 2:1		DRAWING No. New Millis Wotton - under - Edge Glouc., England.		
USED ON		RENISHAW®		DRAWING No. A-2249-0580-03-A		