

FCC ID: KQG RMP2-224

FIRST ISSUE N° DRAWN BY JM CHANCY
 SHEET 1 of 1
 CHECKED
 DRAWING DATE 05 11 98
 ISSUE DATE 05 03 99

EMITTER 224 MHZ LP US

New Mills
 Motton Under Edge
 Glos. England

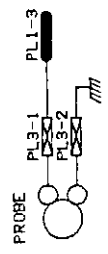
RENISHAW

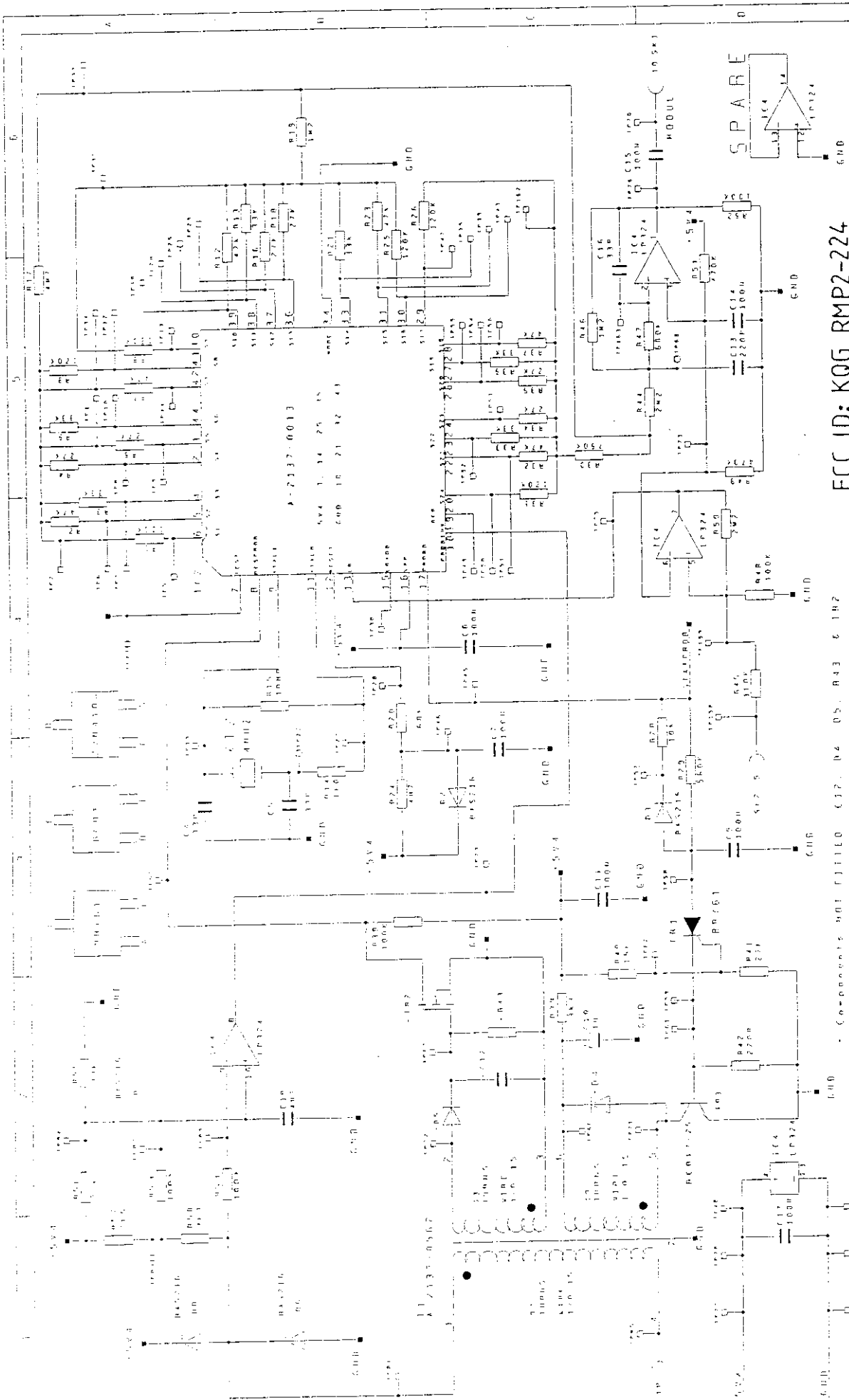
C 2137 0094 01 A

LD4\TX220US_SCH (layer 1 R4 98: offset 0.1 0.3)

TITLE

DRAWING IS THE PROPERTY OF RENISHAW METROLOGY LTD AND MAY NOT BE REPRODUCED OR USED FOR ANY PURPOSE OTHER THAN THAT FOR WHICH IT IS SUPPLIED WITHOUT THE EXPRESS WRITTEN AUTHORITY OF RENISHAW METROLOGY LTD





FCC ID: KQG RMP2-224

Components NOT FILLED C12, D4, D5, R43, E, I, M2

<p>REVISIONS</p> <p>DATE: 12/8/97</p> <p>BY: A. SWITH</p> <p>ISSUE NO: 1</p>		<p>ISSUE NO: 2</p> <p>SCALE: NTS</p> <p>DATE: 11/14/97</p> <p>BY: NTS</p>	
<p>REVISIONS</p> <p>DATE: 11/14/97</p> <p>BY: NTS</p>		<p>ISSUE NO: 1</p> <p>SCALE: NTS</p> <p>DATE: 11/14/97</p> <p>BY: NTS</p>	
<p>REVISIONS</p> <p>DATE: 11/14/97</p> <p>BY: NTS</p>		<p>ISSUE NO: 1</p> <p>SCALE: NTS</p> <p>DATE: 11/14/97</p> <p>BY: NTS</p>	

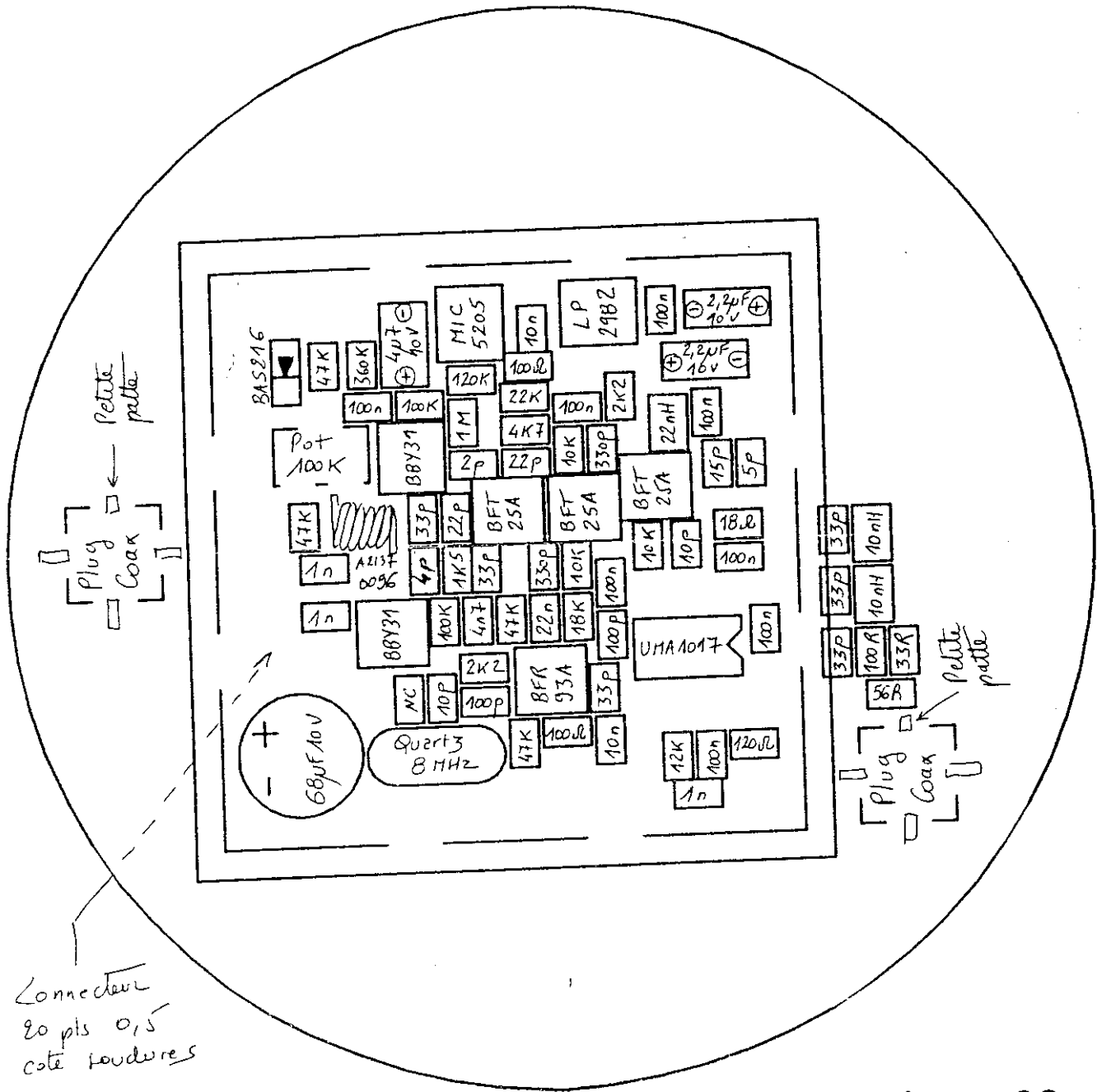
RENISHAW

REVISIONS

DATE: 11/14/97

BY: NTS

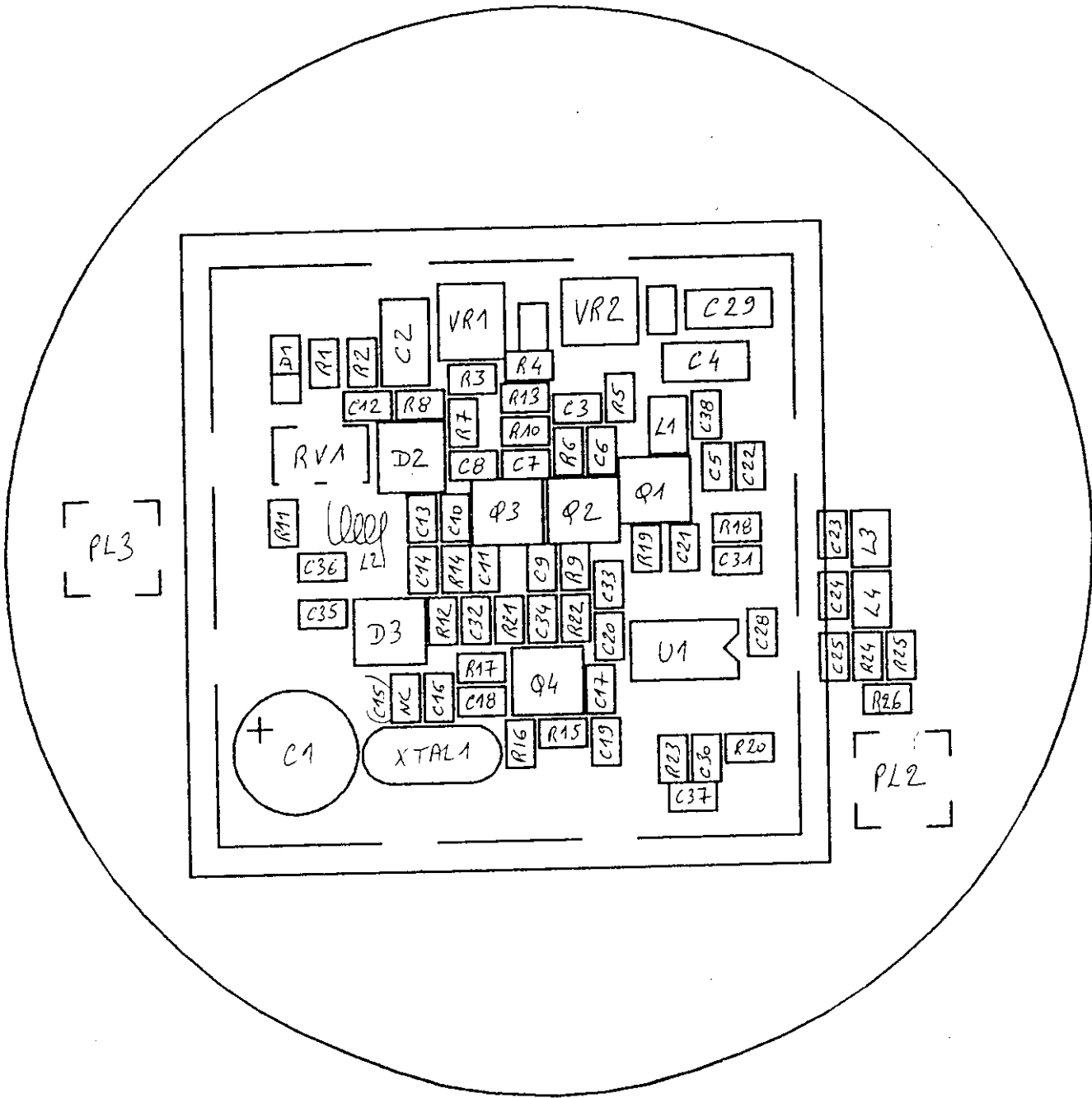
4-29-990-14 14 1057001A



KQG RMP2-224

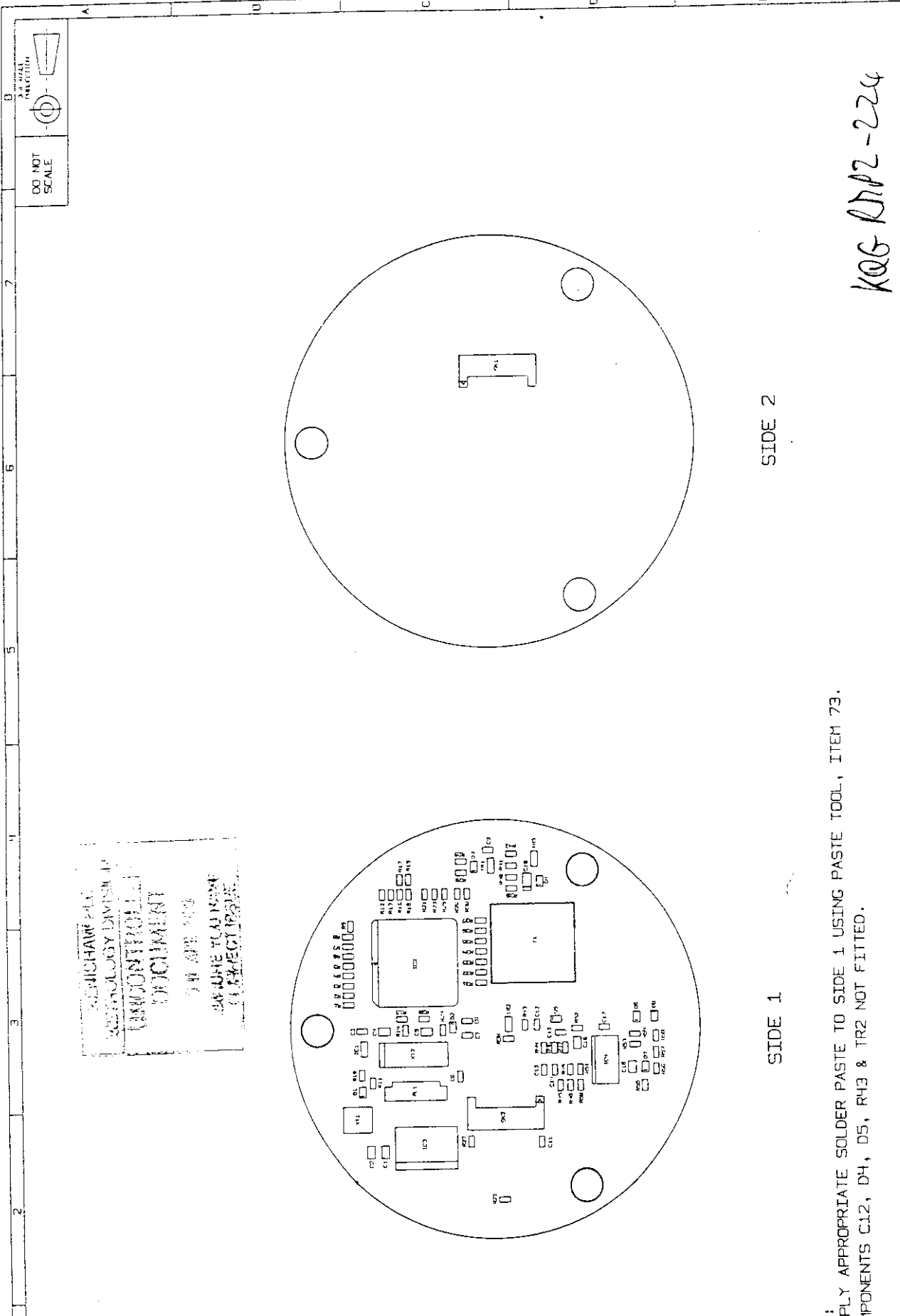
Emitter 224 MHz
LP US

A2137 / 0094 / 011



KQG RMP2-224
 Emitter 224 MHz
 LP US

A 2137 / 0094 / 01/A



RENISHAW P.L.C.
 TECHNOLOGY DIVISION
 UNMOUNTABLE
 DOCUMENT
 TO BE KEPT
 WHERE YOU CAN
 CONTACT US

SIDE 2

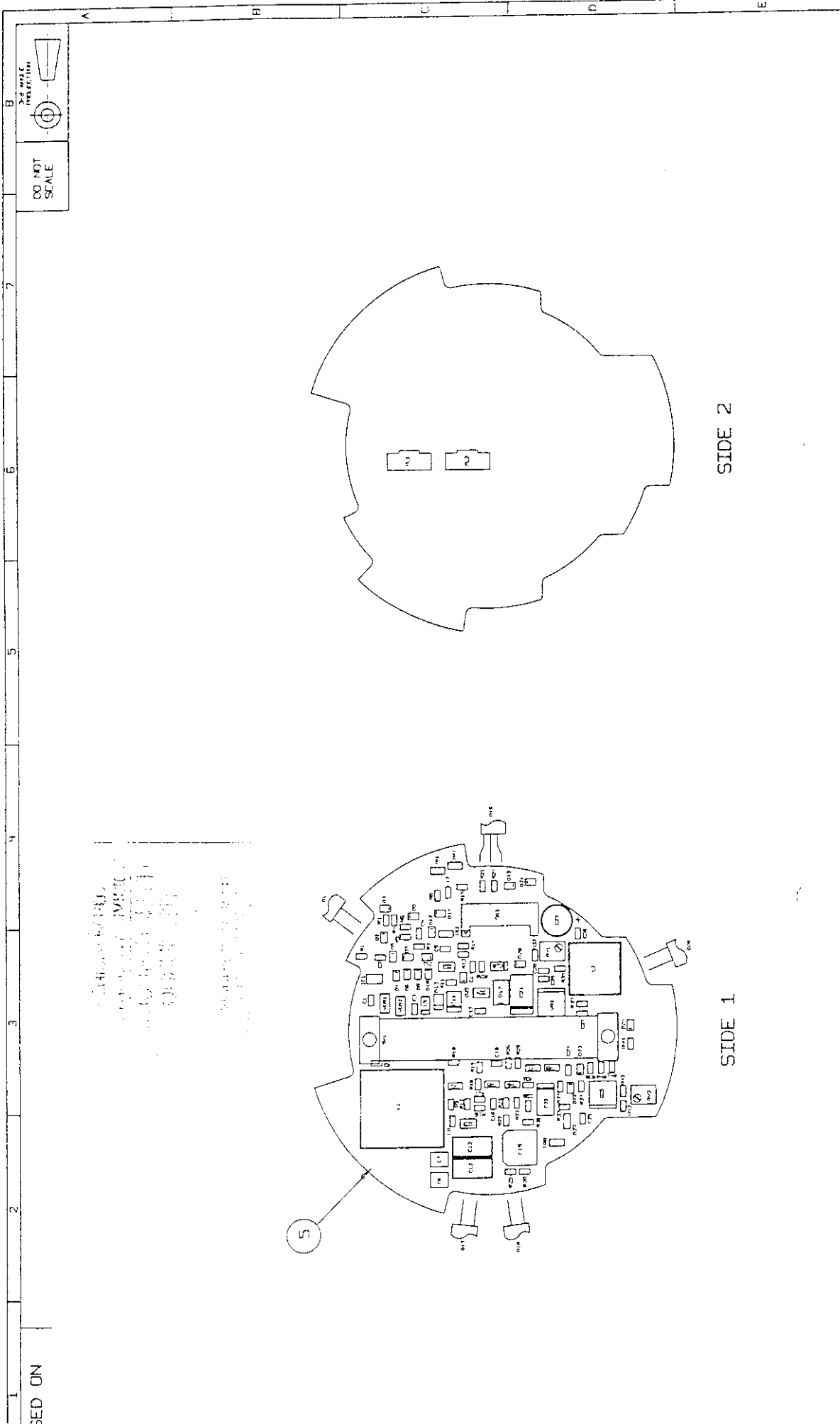
SIDE 1

- NOTES:
1. APPLY APPROPRIATE SOLDER PASTE TO SIDE 1 USING PASTE TOOL, ITEM 73.
 2. COMPONENTS C12, D4, D5, R43 & TR2 NOT FITTED.

KOG DP2-224

UNLESS OTHERWISE STATED: ALL DIMENSIONS IN MILLIMETRES TO ± 0.25 ANGLES ± 2° REFERENCE SHARP CORNERS - DIMENSIONED AT 0.25 MAX. INTERNAL RADIUS 0.25 MAX. SURFACE TEXTURE - 1.5/ TYPICALS TO BS 3743 50/01. DRAWING PRACTICE TO BS 300		TITLE R/	RADIO PROBE LOGIC PWB	DRAWN BY JRM	CHECKED BY BP	ISSUE DATE 1.10.97
THIS DRAWING IS THE PROPERTY OF RENISHAW P.L.C. TECHNOLOGY DIVISION, AND MAY NOT BE COPIED OR USED FOR ANY PURPOSE OTHER THAN THAT FOR WHICH IT IS ISSUED, WITHOUT THE EXPRESS WRITTEN AUTHORITY OF RENISHAW P.L.C.		MATERIAL TYPE CODE R/	MATERIAL	9 OCT 1 OF 1	ISSUE DATE	
<p>RENISHAW®</p> <p>Hotchkiss - Under - Edge Cloos - England.</p>		SCALE D.M.S.	2:1	DRAWING No.	A-2137-0520-03-A	

ED ON



SED ON

DO NOT SCALE



ES:- COMPONENTS SW1, D1, D15, D16, D18 & D26 NOT FITTED AT THIS ASSEMBLY LEVEL.
 PRIOR TO ASSEMBLY OF SURFACE MOUNT COMPONENTS APPLY APPROPRIATE SOLDER PASTE USING ITEM 73.

K06 RHP2-224

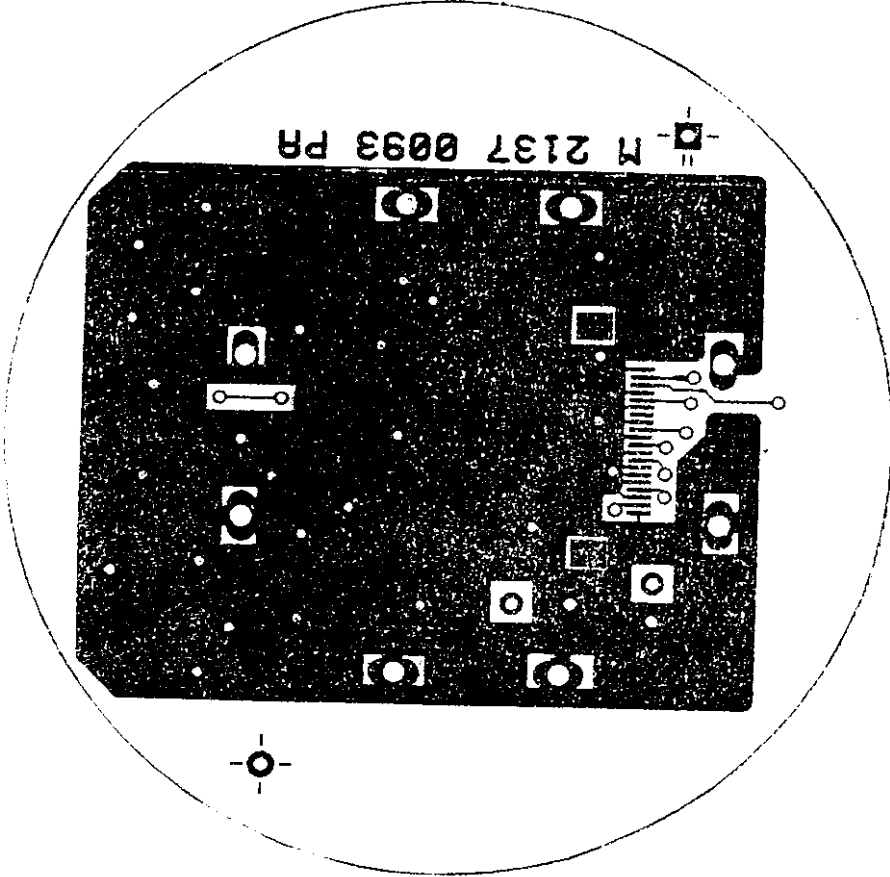
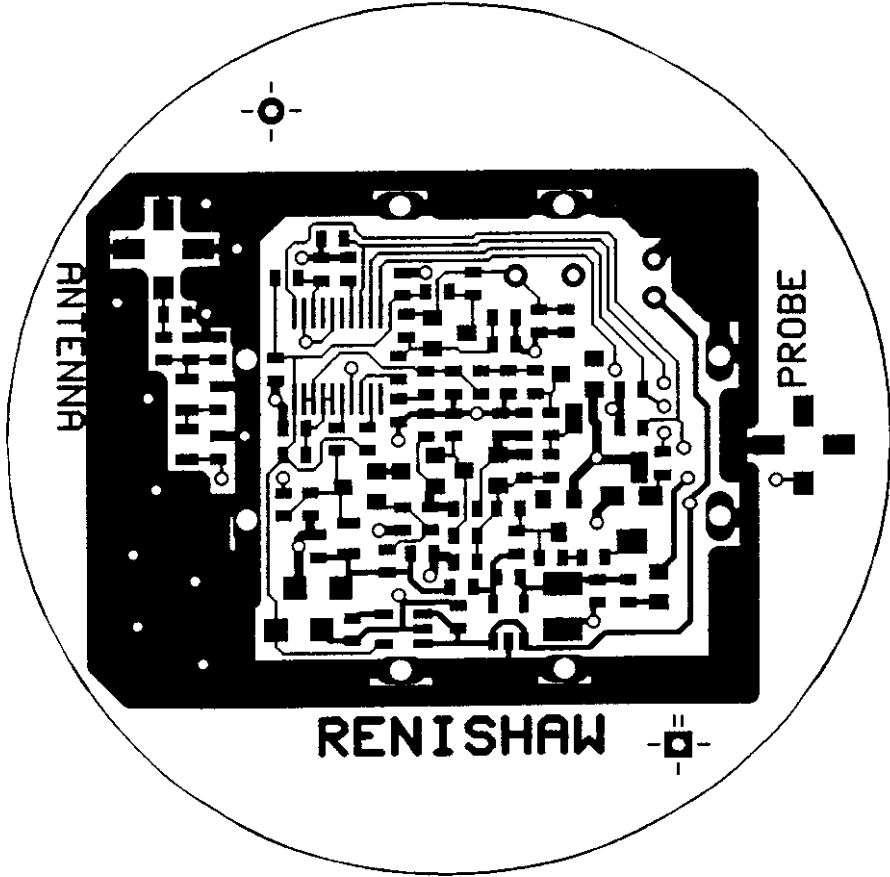
SIDE 2

SIDE 1

UNLESS OTHERWISE STATED: ALL DIMENSIONS IN MILLIMETRES TO... ± 0.25 AXLES ± 2° REMOVE SHARP CORNERS - DIMETER OR R 0.25 MAX. 1.6° INTERNAL HOLES 0.25 MAX. SURFACE TEXTURE - 1.6 FINISHES TO BS 2013 GY/D1. DIMENSIONAL PRACTICE TO BS 331		TITLE RADIO PROBE POWER PWB		FIRST ISSUE NO. 547	ISSUED BY JRN	ISSUE DATE 22.9.97
THIS DRAWING IS THE PROPERTY OF RENISHAW PLC - METROLOGY DIVISION, AND MAY NOT BE COPIED OR USED FOR ANY PURPOSE OTHER THAN THAT FOR WHICH IT IS SUPPLIED, WITHOUT THE EXPRESS WRITTEN AUTHORITY OF RENISHAW PLC.		MATERIAL TYPE CODE R/		9 FEET 1 OF 1	DRAWN BY BP	ISSUE DATE
SCALE 2:1		DRAWN BY BP		A-2137-0500-04-A		

RENISHAW®

New Mills
 Bottom - under - Edge
 Gloss. England.



M 2137 0093 PA

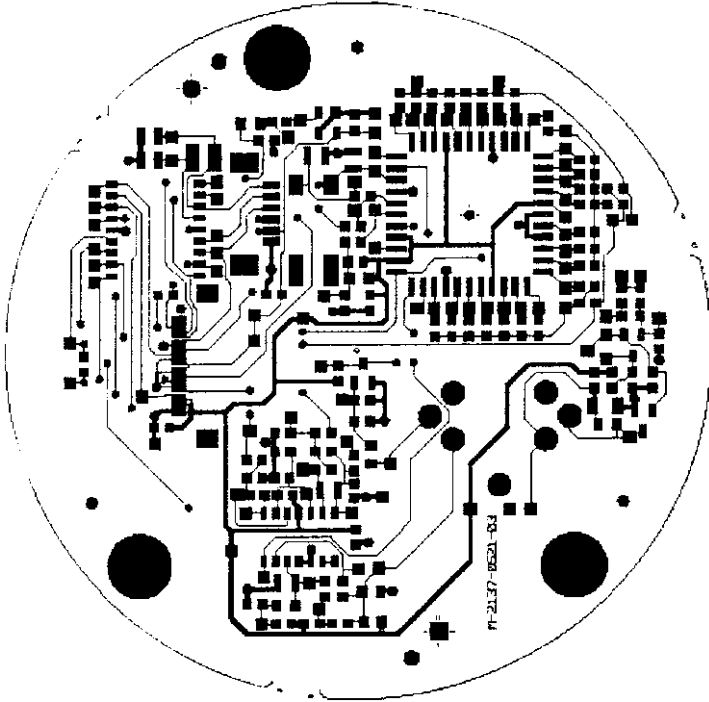
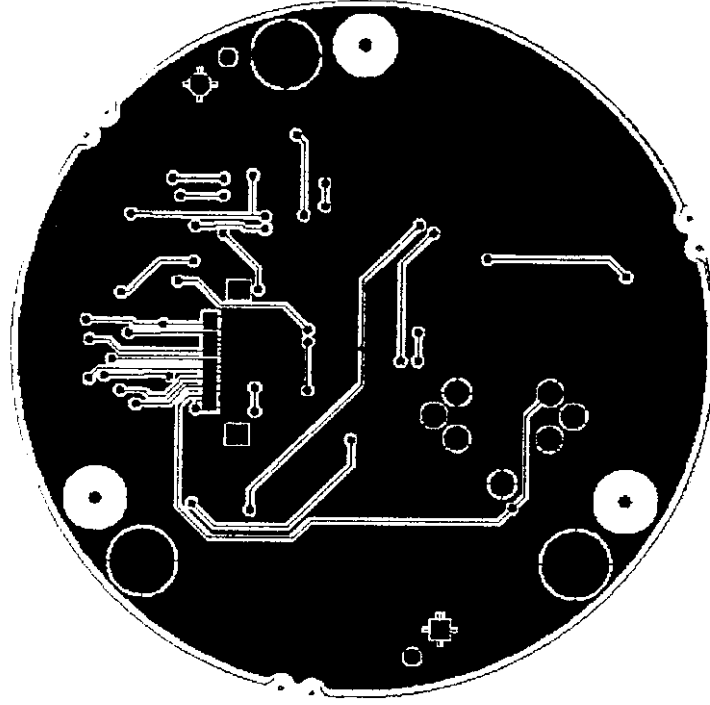
FCC ID: KQG RMP2-224

TITLE EMITTER 224 LP US PCB		FIRST ISSUE N° SHEET 1 of 1	DRAWN BY JM CHANCY	DRAWING DATE 07/10/98
MATERIAL RENISHAW		SCALE 1/1	CHECKED	ISSUE DATE
RENISHAW New Mills Motton Under Edge Glos. England		M 2137 0093 PA		

RENISHAW PCB (layer A @ 90° R4 offset 0.1 @ 3)

UNLESS OTHERWISE STATED
 DIMENSIONS IN MILLIMETERS TOL 0.25 ANGLES 2° ±
 E. SHARP CORNERS-CHAMFER OR R 0.25 MAX
 MIN. RADII 0.25 MAX SURFACE TEXTURE 1.6
 UNLESS OTHERWISE STATED

DRAWING IS THE PROPERTY OF RENISHAW METROLOGY LTD AND MAY NOT BE
 REPRODUCED OR USED FOR ANY PURPOSE OTHER THAN THAT FOR WHICH IT IS SUPPLIED
 WITHOUT THE EXPRESS WRITTEN AUTHORITY OF RENISHAW METROLOGY LTD



FCC ID: KQG RMP2-224

TITLE LOGIC PROBE PCB		FIRST ISSUE N°	DRAWN BY	DRAWING DATE
MATERIAL		SHEET 1 of 1	CHECKED	ISSUE DATE
RENISHAW		M 2137 0521		02
New Mills Hotton Under Edge Glos. England				

LOG PCB (layer A @ 90° A4 offset 0.1 @ 3)

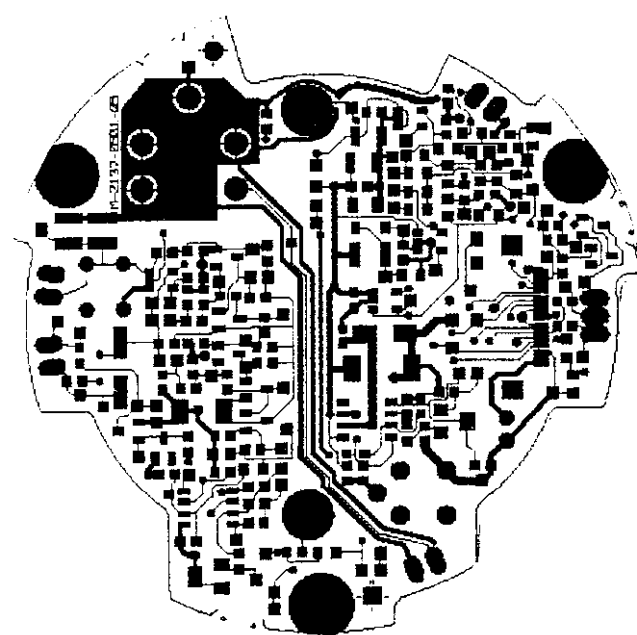
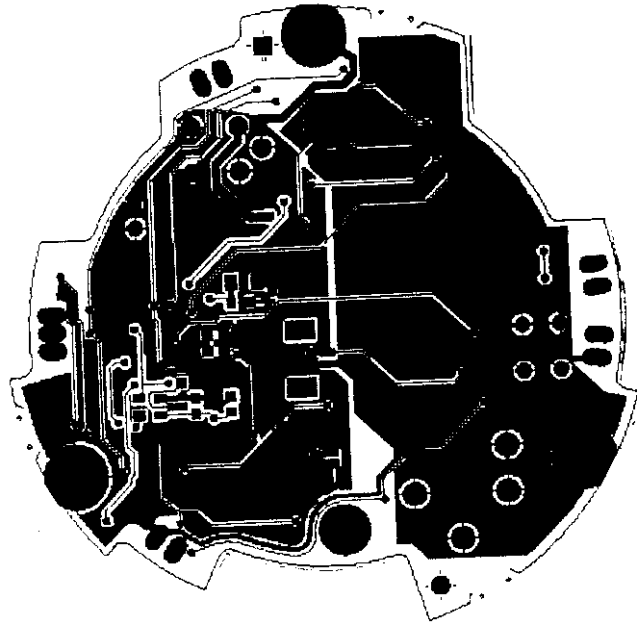
UNLESS OTHERWISE STATED DIMENSIONS IN MILLIMETERS TOL 0.25 ANGLES 2° ±

USE SHARP CORNERS-CHAMFER OR R 0.25 MAX

MINIMAL RADIUS 0.25 MAX SURFACE TEXTURE 1.6

RADS 6@ 6H

THIS DRAWING IS THE PROPERTY OF RENISHAW METROLOGY LTD AND MAY NOT BE REPRODUCED OR USED FOR ANY PURPOSE OTHER THAN THAT FOR WHICH IT IS SUPPLIED WITHOUT THE EXPRESS WRITTEN AUTHORITY OF RENISHAW METROLOGY LTD



FCC ID: KQG RMP2-224

PRB-POW.PCB (Layer A B offset 0.2 2.5)		TITLE POWER PCB		FIRST ISSUE N°	DRAWN BY	DRAWING DAT
UNLESS OTHERWISE STATED		MATERIAL		1/1	JH CHANCY	01 10 97
ALL DIMENSIONS IN MILLIMETERS TOL 0.25 ANGLES 2° ±		REINISHAW		SHEET	CHECKED	ISSUE DATE
REMOVE SHARP CORNERS-CHAMFER OR R 0.25 MAX		New Hill, Hotton Under Edge Gloe., England		1 of 1		
INTERNAL RADIUS 0.25 MAX SURFACE TEXTURE 1.6		RENISHAW				
THREADS 60 6H						
THIS DRAWING IS THE PROPERTY OF RENISHAW METROLOGY LTD AND MAY NOT BE COPIED OR USED FOR ANY PURPOSE OTHER THAN THAT FOR WHICH IT IS SUPPLIED WITHOUT THE EXPRESS WRITTEN AUTHORITY OF RENISHAW METROLOGY LTD						