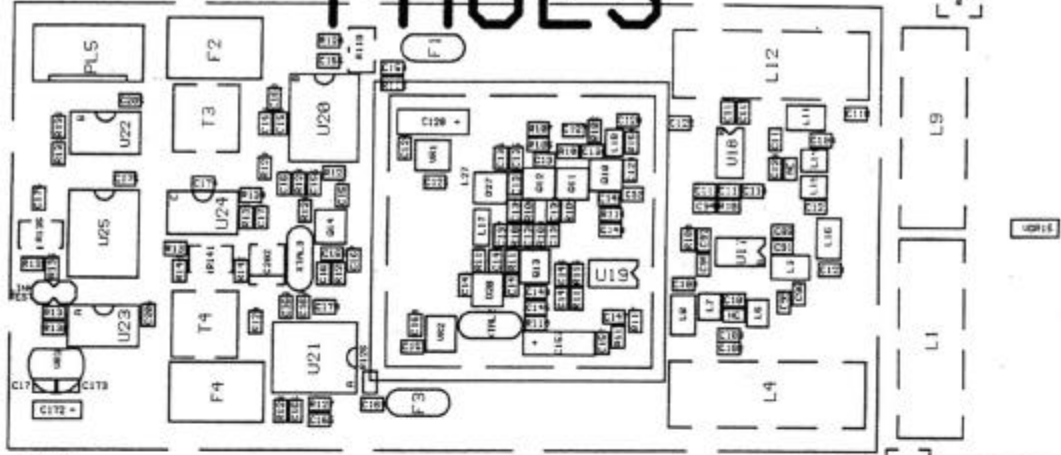
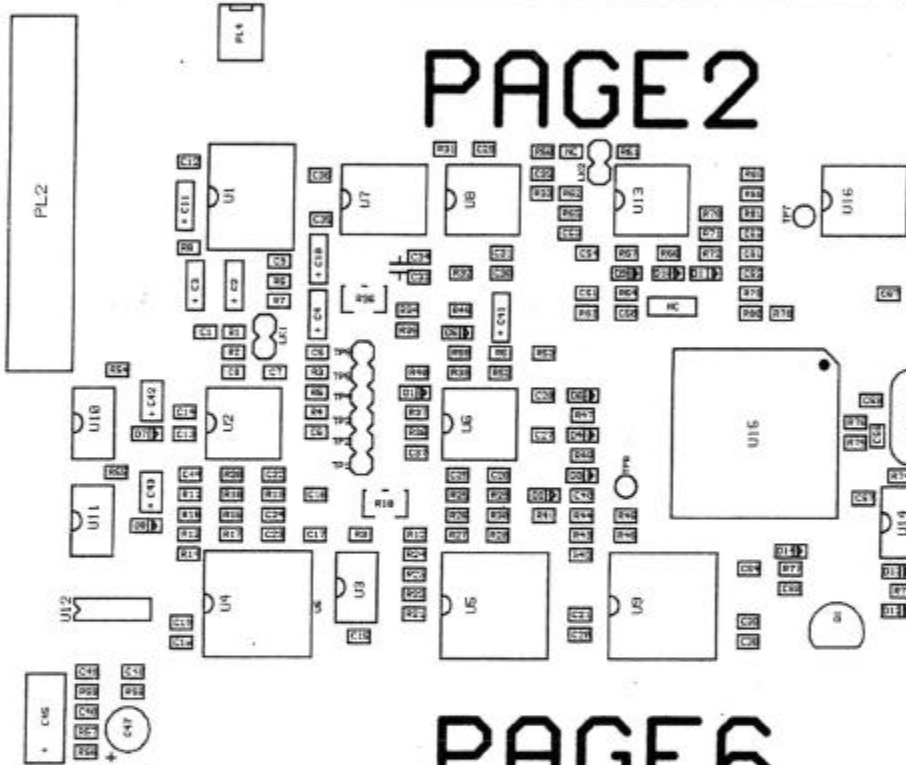


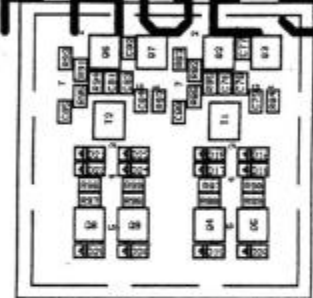
PAGE 3



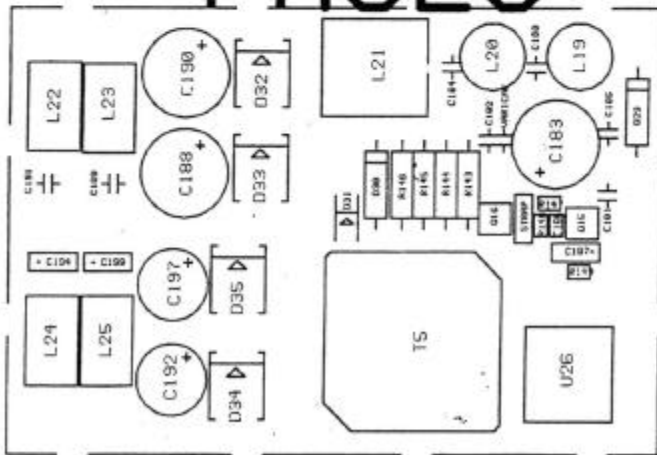
PAGE 2



PAGE 5

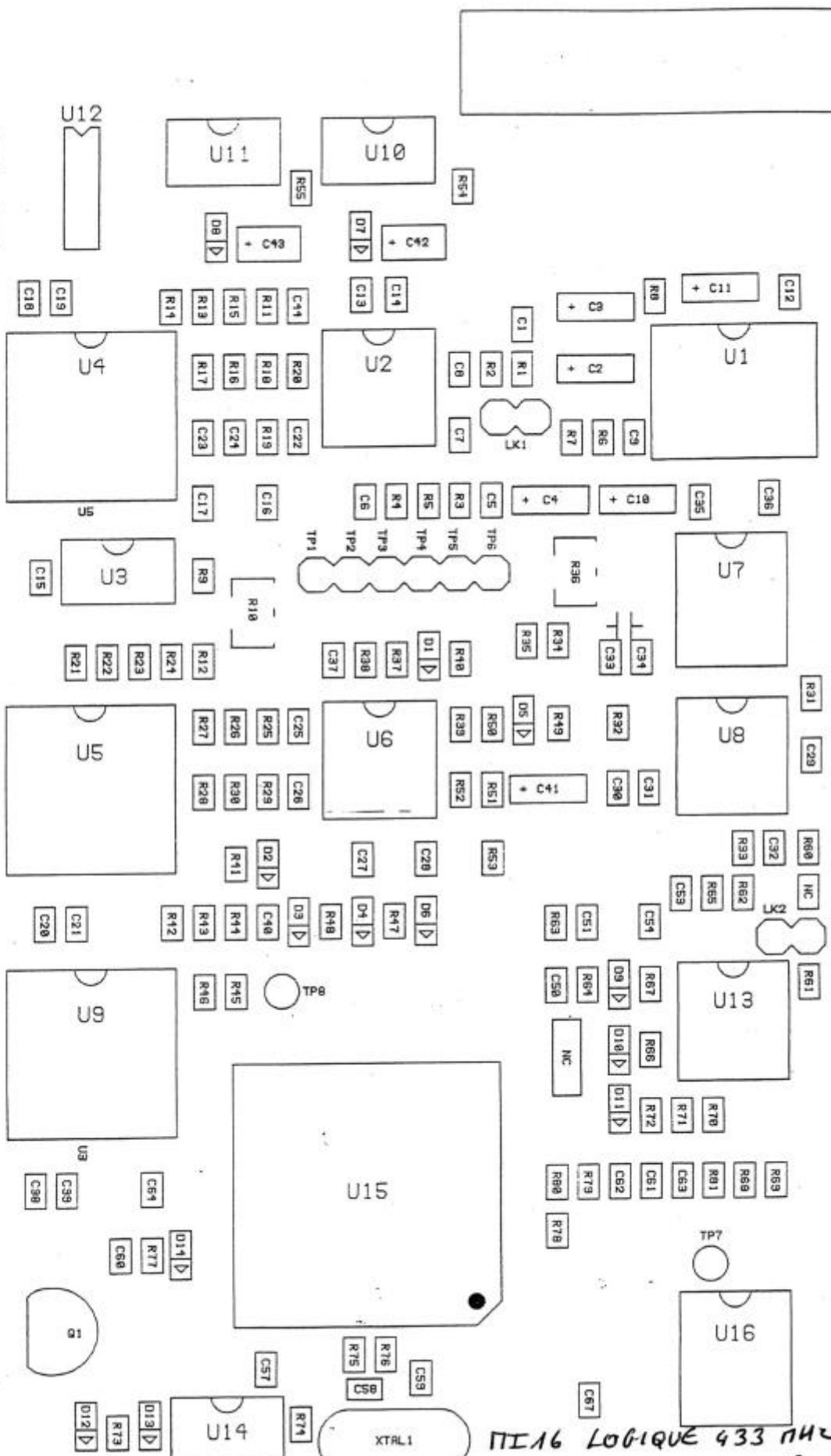
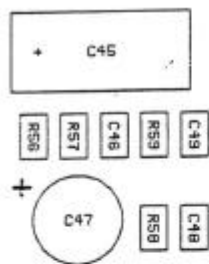


PAGE 6



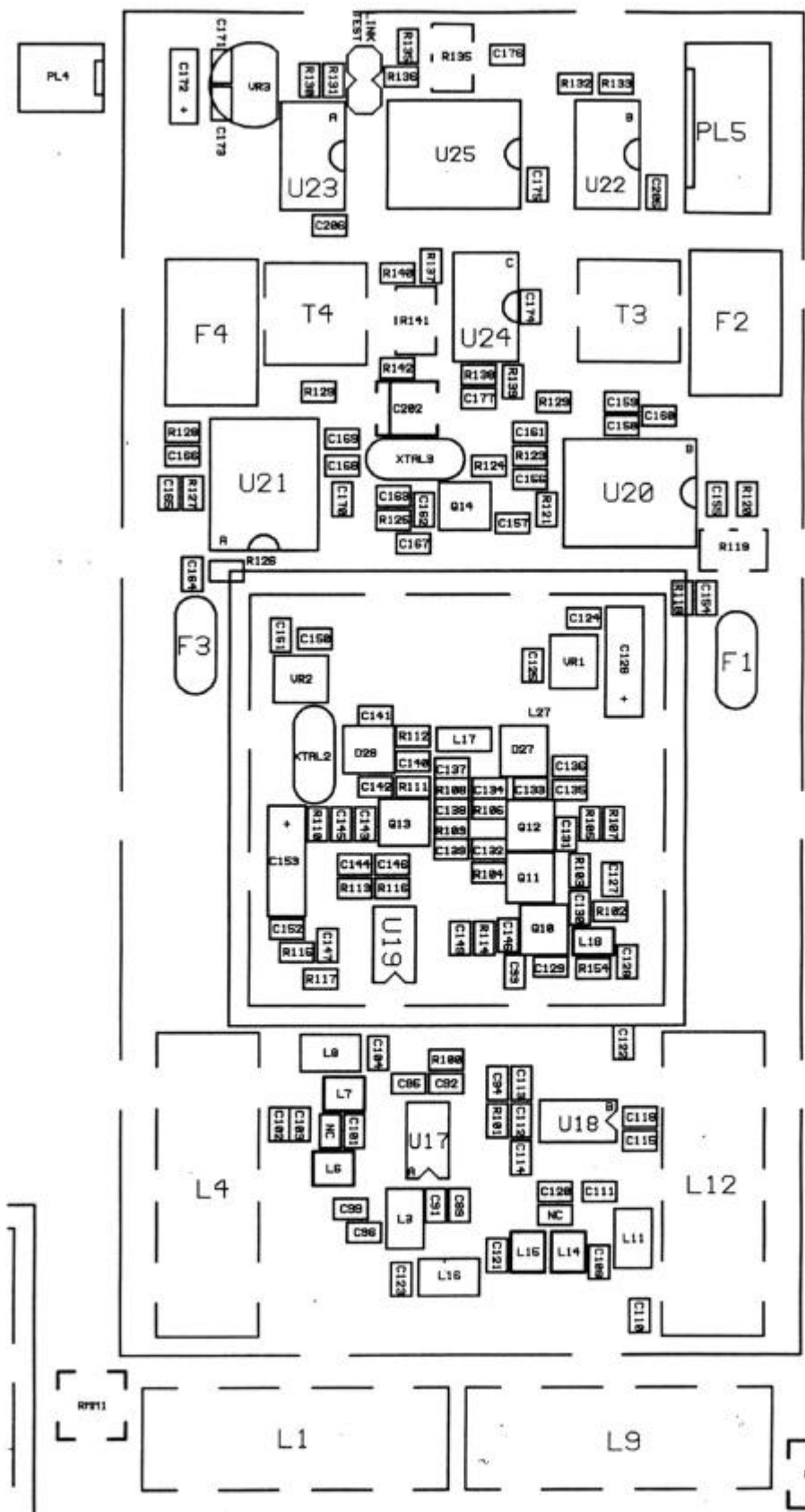
PAGE 4





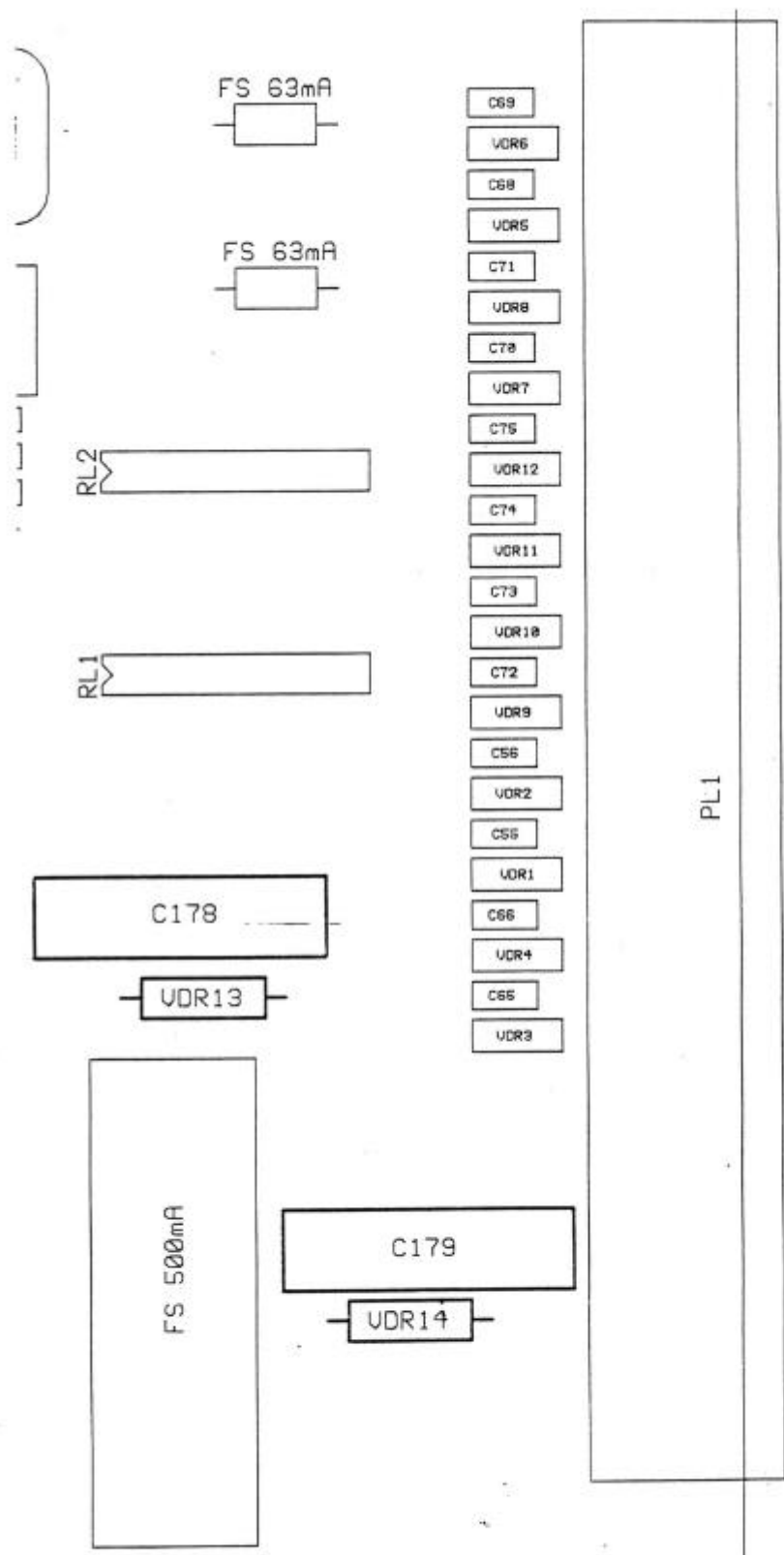
FCC ID: KQG MI16-433

MI16 LOGIQUE 433 MHz
A-2137-0011-03-A Page 2A/7



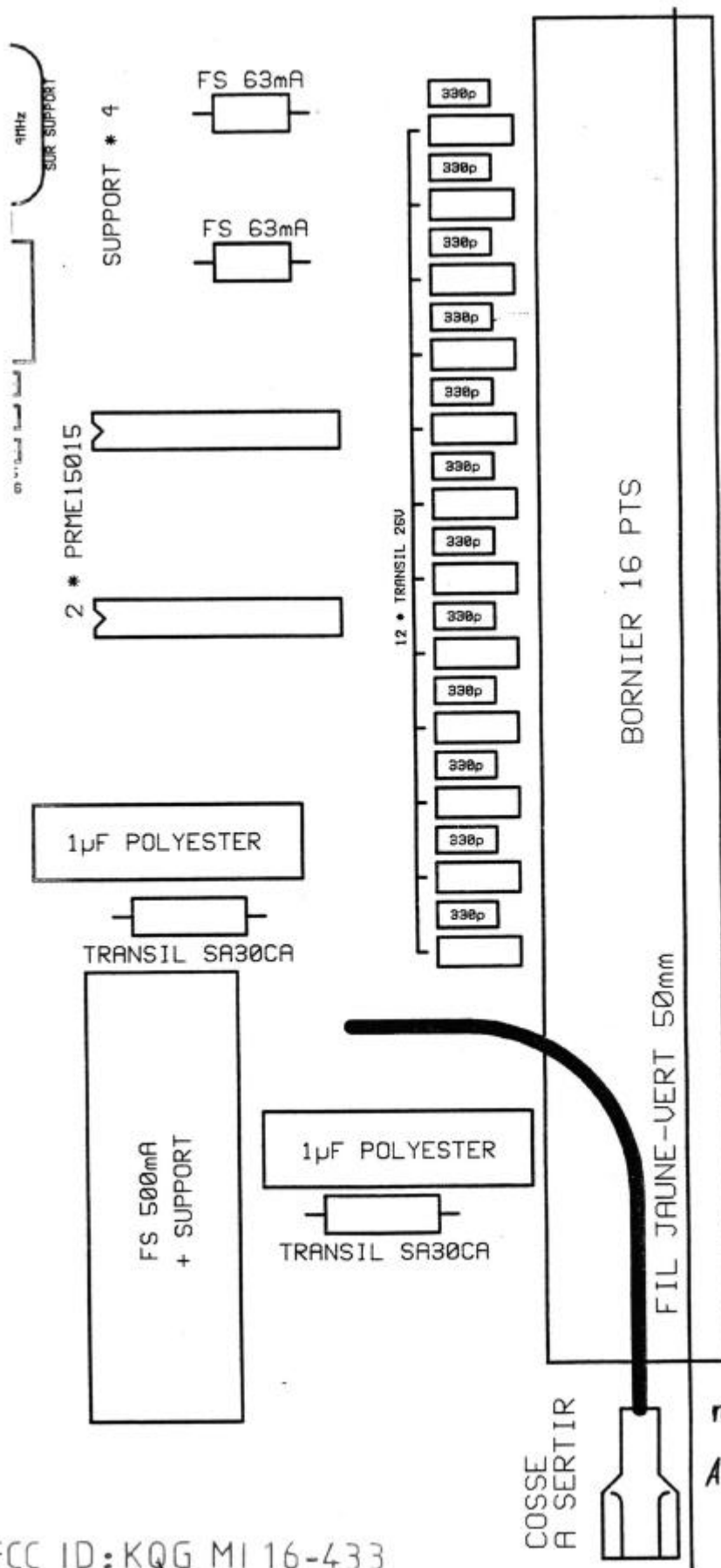
FCC ID: KQG MI16-433

MI16 LOGIQUE 433 MHz
 A-2137-0011-03-A Page 3A/7

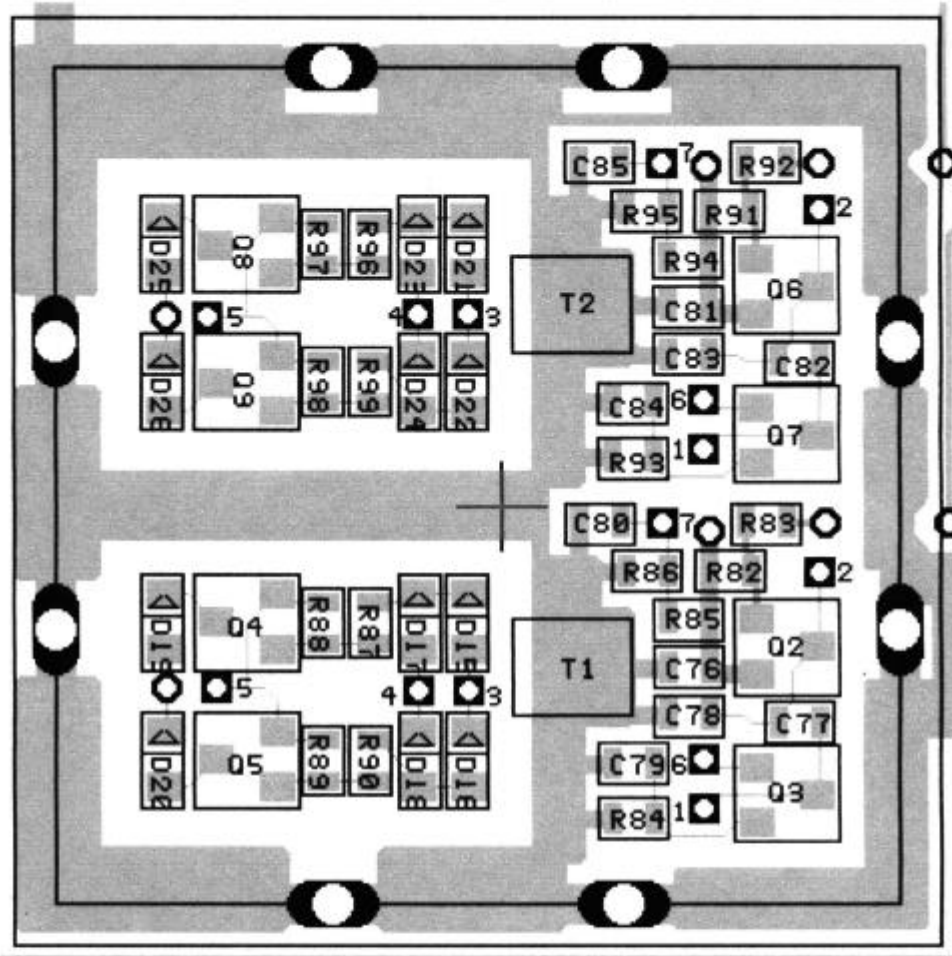


FCC ID: KQG MI16-433

MI16 LOGIQUE 433 MHz
 A-2137-0011-03-A Page 4A/7

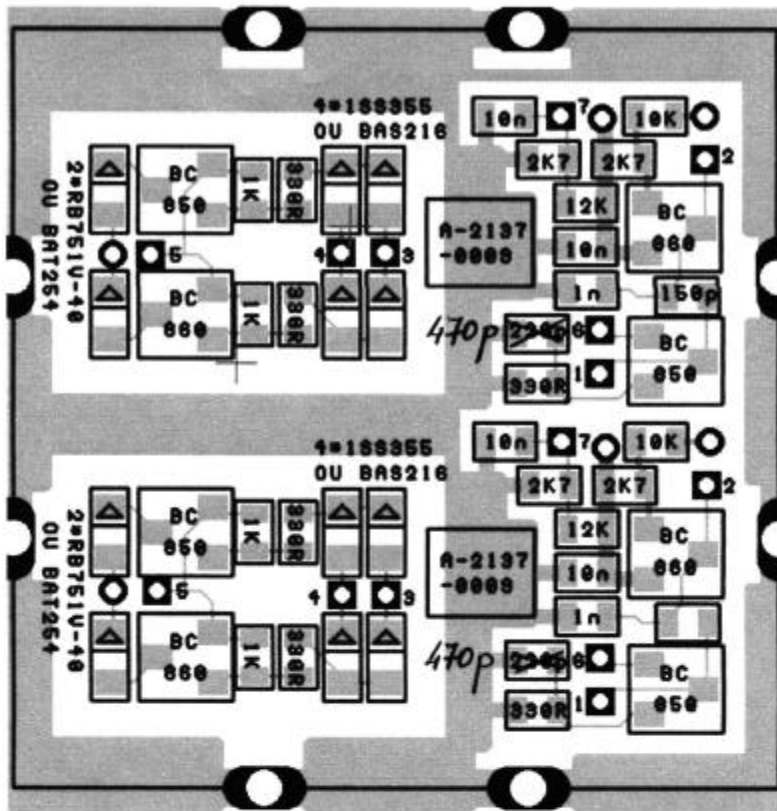


MI16 LOGIQUE 433MHz
 A-2137-0011-03-A
 Page 43/7



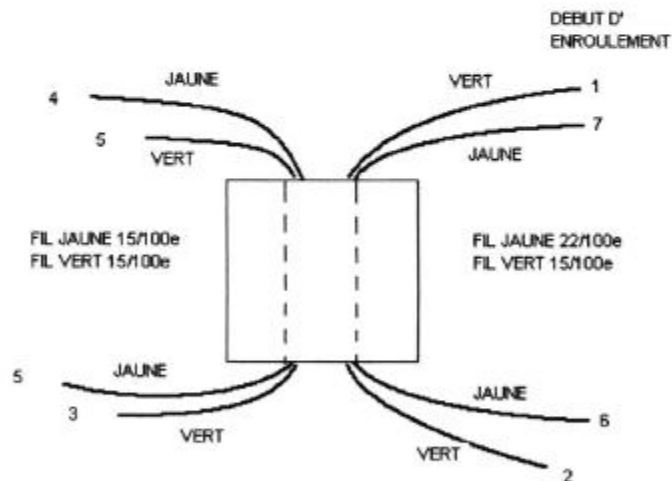
FCC ID: KQG M116-433

M116 LOGIQUE 433 NMZ
 A-2137-0011-03-A Page 5A/7



Nota: les fils des transfos se cablent sur les pastilles carrées uniquement (numérotées de 1 à 7)

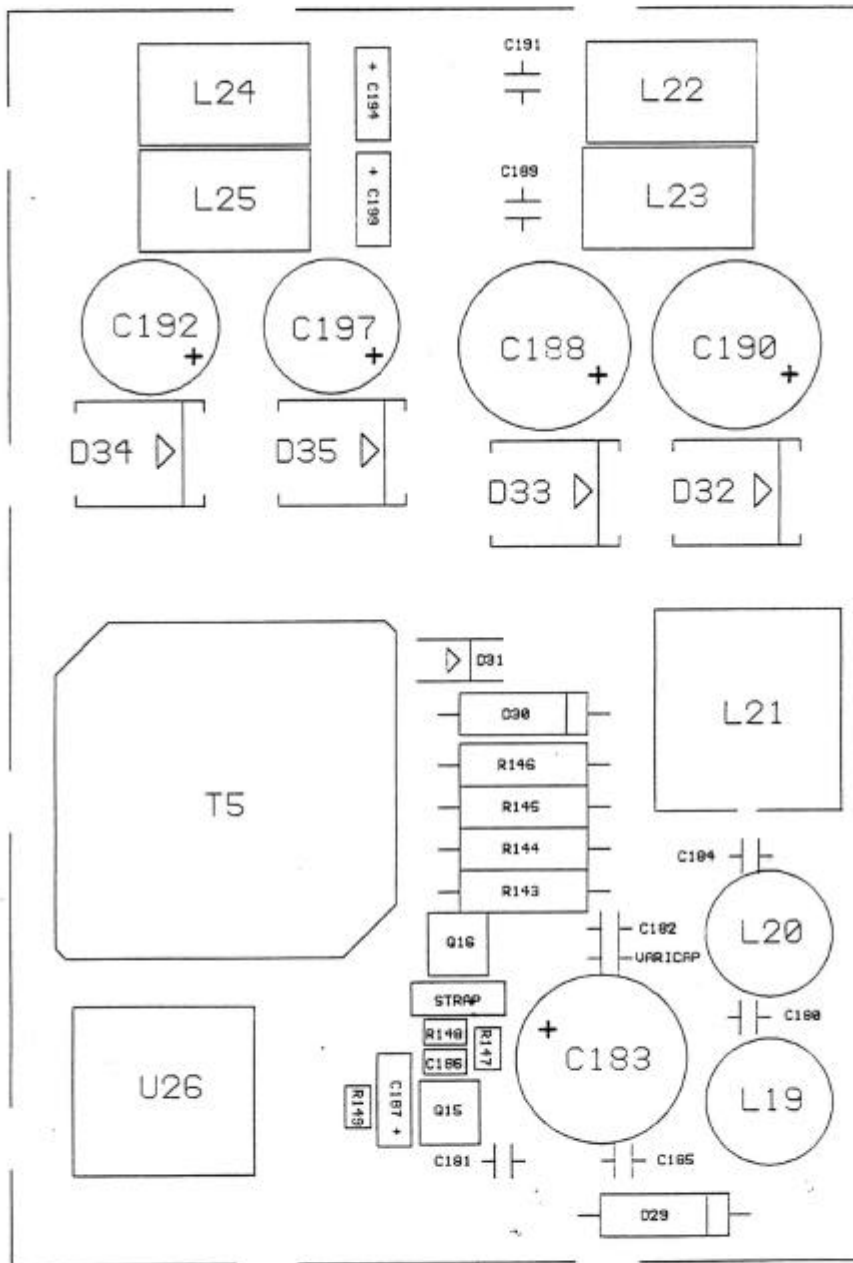
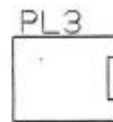
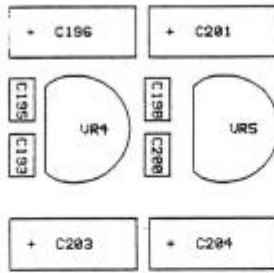
DETAIL TRANSFO



TRANSFOS COLLES A L'ARALDITE (2 MONTAGES IDENTIQUES)

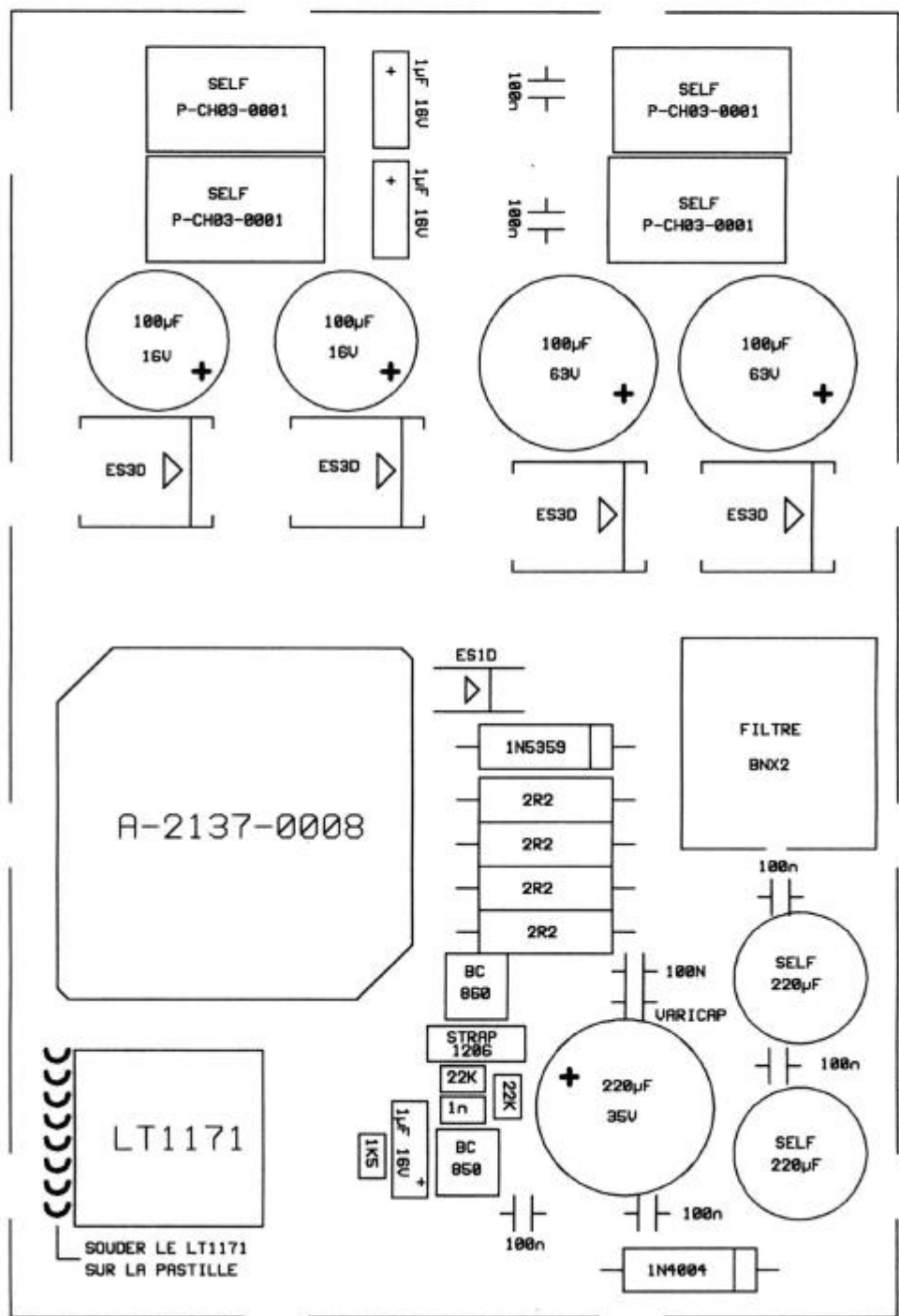
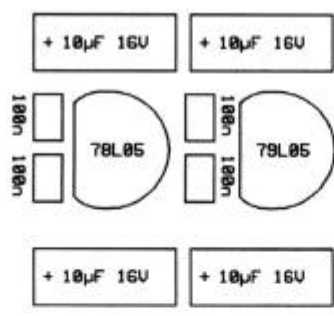
FCC ID: KQG M116-433

MI16 LOGIQUE 433 MHz
A-2137-0011-03-A Page 58/7



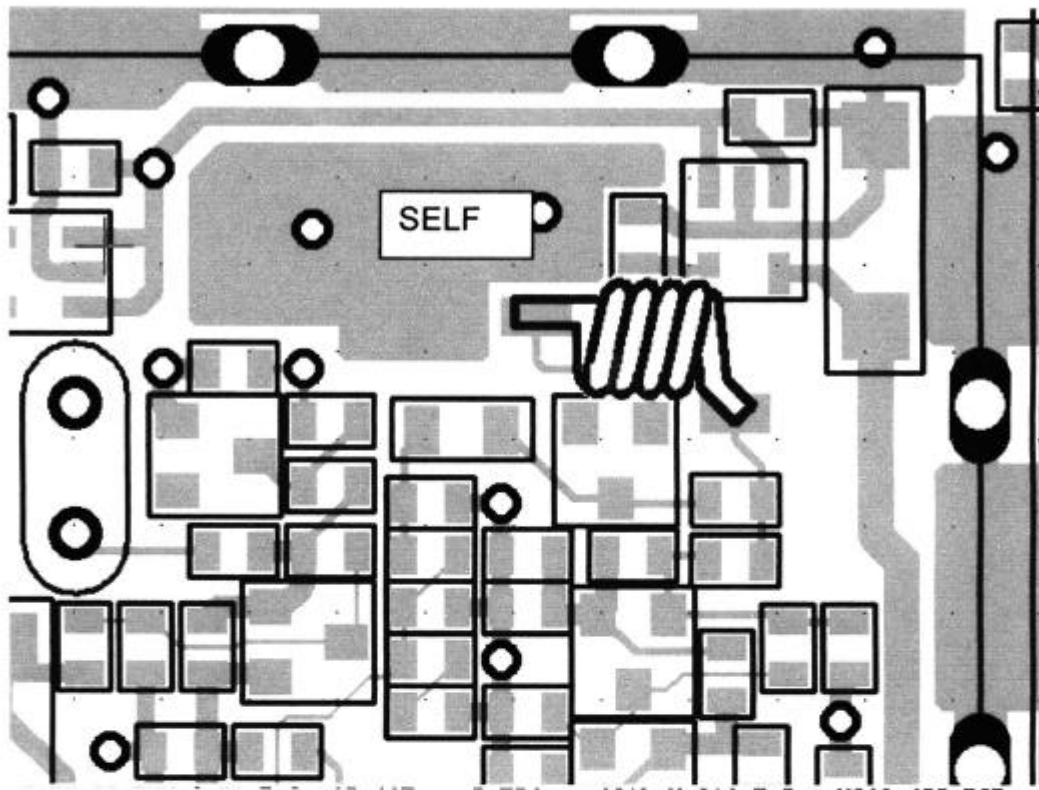
FCC ID: KQG M116-433

NT16 LOGIQUE 433 MHz
 A-2137-0011-03-A Page 6A/7



MI16 LOGIQUE 433 DML
A-2137-0011-03-A
Page 68/7

DETAIL CABLAGE SELF

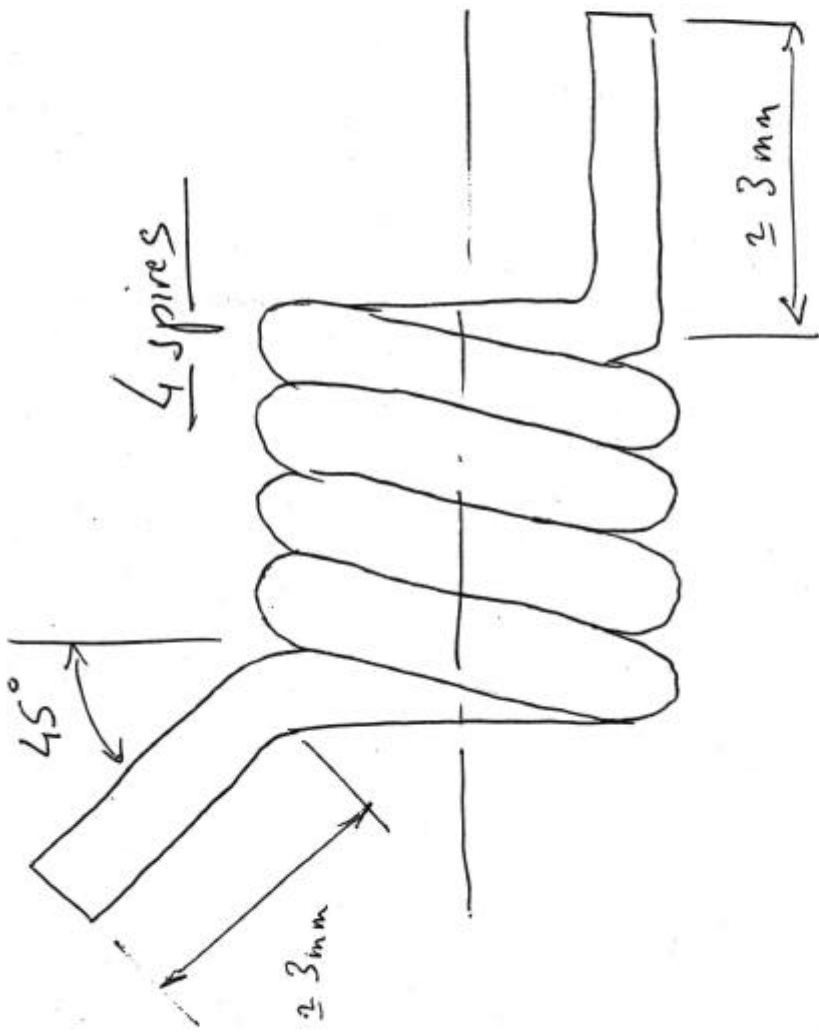


CABLER LA SELF LES SPIRES JOINTIVES
PLAQUER LA SELF SUR LE CIRCUIT LORS DU SOUDAGES DES PATTES
COUPER LES PATTES DE LA SELF A RAS DES PASTILLES
VEILLER A CE QUE LA SELF NE TOUCHE PAS D'AUTRE COMPOSANT

FCC ID: KQG MI16-433

RT16 LOGIQUE 433 MHz

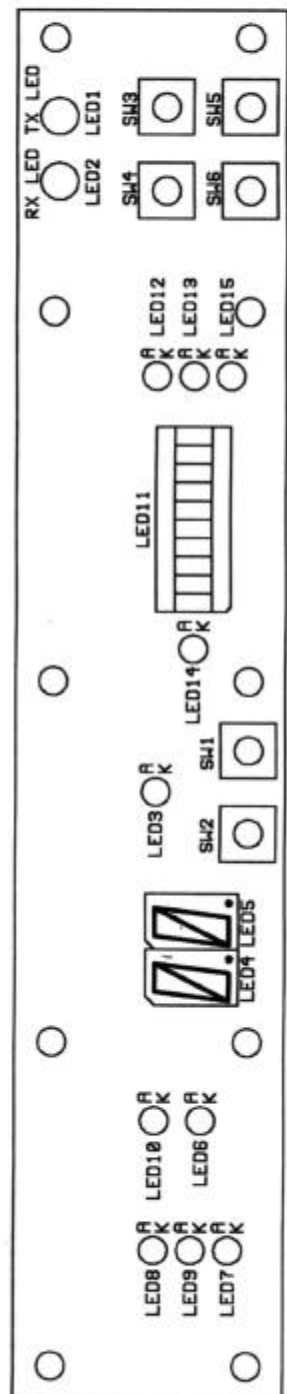
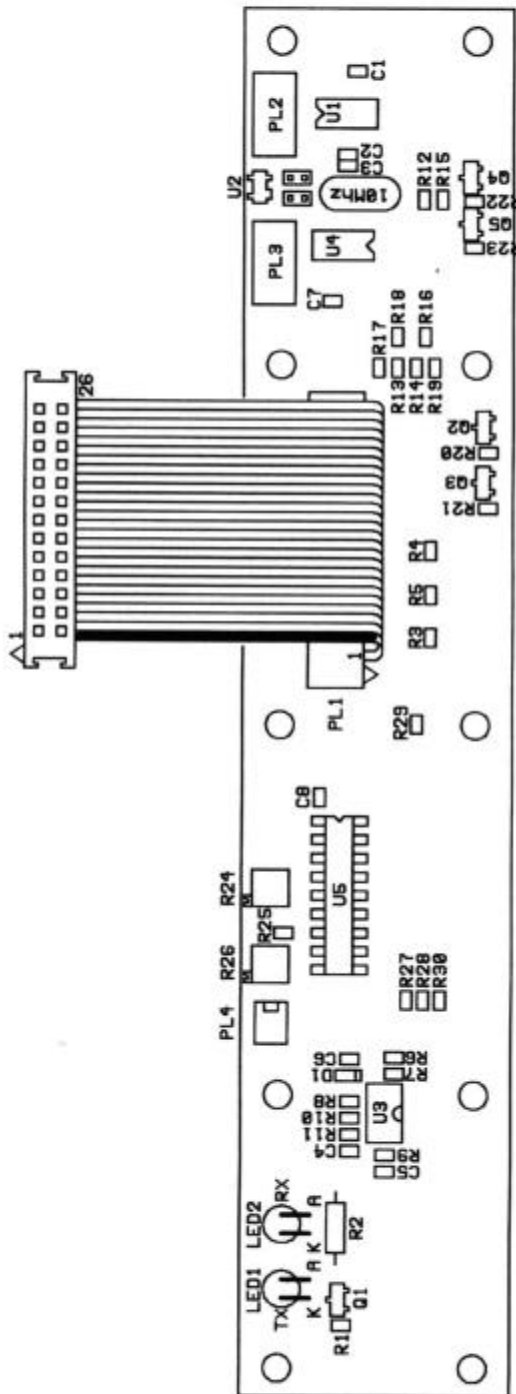
A-2137-0011-03-A Page 7/7



WIRE: 0,5
 Ref Farnell 146-527
 SELF 433/458 MHz

FCC ID:KQG MI 16-433

MI 16 LOGIQUE 433 MHz
 A-2137-0011-03-A Page 70/7



FCC ID: KQG MI16-433

PANEL J10 PCB (Layer 9 A A4 90° offset 0.1 0.3)		DRAWING DATE 18/02/97	
UNLESS OTHERWISE STATED ALL DIMENSIONS IN MILLIMETERS TOL 0.25 ANGLES 2° ± REMOVE SHARP CORNERS-CHARFER OR R 0.25 MAX INTERNAL RND11 0.25 MAX SURFACE TEXTURE 1.6 THREADS 6g 6H		DRAWN BY JM CHANCY	
TITLE FRONT PANEL PWB		FIRST ISSUE N° SHEET 2 of 2	
MATERIAL		CHECKED	
SCALE 1/1		ISSUE DATE 25/03/02	

THIS DRAWING IS THE PROPERTY OF RENISHAW METROLOGY LTD AND MAY NOT BE COPIED OR USED FOR ANY PURPOSE OTHER THAN THAT FOR WHICH IT IS SUPPLIED WITHOUT THE EXPRESS WRITTEN AUTHORITY OF RENISHAW METROLOGY LTD

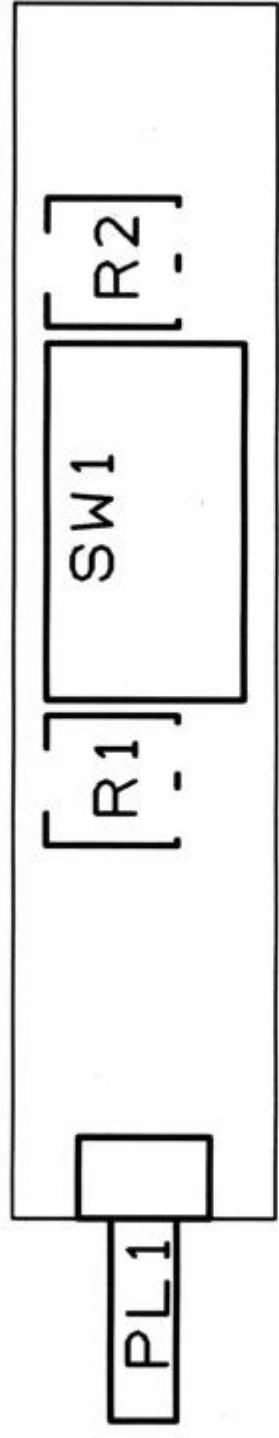
RENISHAW New Millie
Motton Under Edge
Glouc, England

A 2137 0004 03 A



1 2 3 4

high low medium



MOLEX 2W 90° POT 10K SWITCH POT 10K

NOTA: SOUDER LE SWITCH EN LE PLAQUANT
SUR LE CIRCUIT IMPRIME

FCC ID: K0G MI16-433

UNLESS OTHERWISE STATED ALL DIMENSIONS IN MM TOL +/- 0.25 ANGLE +/- 2° REMOVE SHARP CORNERS-CHAMFER OR R 0.25 MAX INTERNAL RADI 0.25 MAX SURFACE TEXTURE 1.6 THREADS 6g 6h	⊕ 0.2	⊕ 0.2	⊕ 0.2	FIRST ISSUE	DRAWN BY	JM CHANCY	29 03 02	
	⊖ 0.2	⊖ 0.2	⊖ 0.2	SCALE SHEET	CHECKED	ISSUE DATE	29 03 02	
THIS DRAWING IS THE PROPERTY OF RENISHAW METROLOGY LTD AND MAY NOT BE COPIED OR USED FOR ANY PURPOSE OTHER THAN THAT FOR WHICH IT IS SUPPLIED WITHOUT THE EXPRESS WRITTEN AUTHORITY OF RENISHAW METROLOGY LTD	TITLE			1 of 1				
	MATERIAL			SENSIBILITY PWB				
RENISHAW METROLOGY LTD NEW MILLS MOTTON UNDER EDGE GLOS. ENGLAND			A-2137-1004-01-A					