

FCC ID KOGM116-224

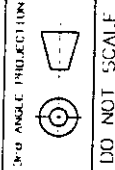
This device complies with Part 15 of the FCC Rules Operation is subject to the following two conditions: (1) This device may not cause harmful interference and (2) This device must accept any interference received including interference that may cause undesired operation.

R 5  
TYP

NOTES:

1. TEXT FONT - HELVETICA MEDIUM CONDENSED
2. WHITE TEXT ON BLACK BACKGROUND
3. TEXT HEIGHT - 2.5 - 3mm
4. TEXT TO BE CENTRALLY DISPOSED IN LABEL BOUNDS

SEE PROCESS STANDARD P50010 FOR DEFINITION OF SYMBOLS.  
 UNLESS OTHERWISE STATED:  
 ALL DIMENSIONS IN MILLIMETRES TO 0.25 ANGLES 12°  
 REMOVE SHARP CORNERS - CHAMFER OR R0.5 MAX.  
 INTERNAL RADI 0.5 MAX. SURFACE TEXTURE: 3.2  
 TOLERANCES TO BS 2843 GR/GR1.  
 DRAWING PRACTICE TO BS 308



3rd ANGLE PROJECTION  
 DO NOT SCALE

TITLE  
 224MHZ LABEL - M116  
 MATERIAL TYP CORR R/  
 MATERIAL TESSA LABEL 6030

|                 |       |          |     |            |        |
|-----------------|-------|----------|-----|------------|--------|
| FIRST ISSUE No. | 29046 | DRAWN BY | DLW | DRAWN DATE | APR 99 |
| SHEET           | 1     | CHECKED  |     | ISSUE DATE |        |
| OF              | 1     |          |     |            |        |

CONFIDENTIAL THIS DRAWING IS THE PROPERTY OF RENISHAW  
 AND MAY NOT BE COPIED OR USED  
 FOR ANY PURPOSE WITHOUT THE WRITTEN AUTHORITY OF RENISHAW PLC.

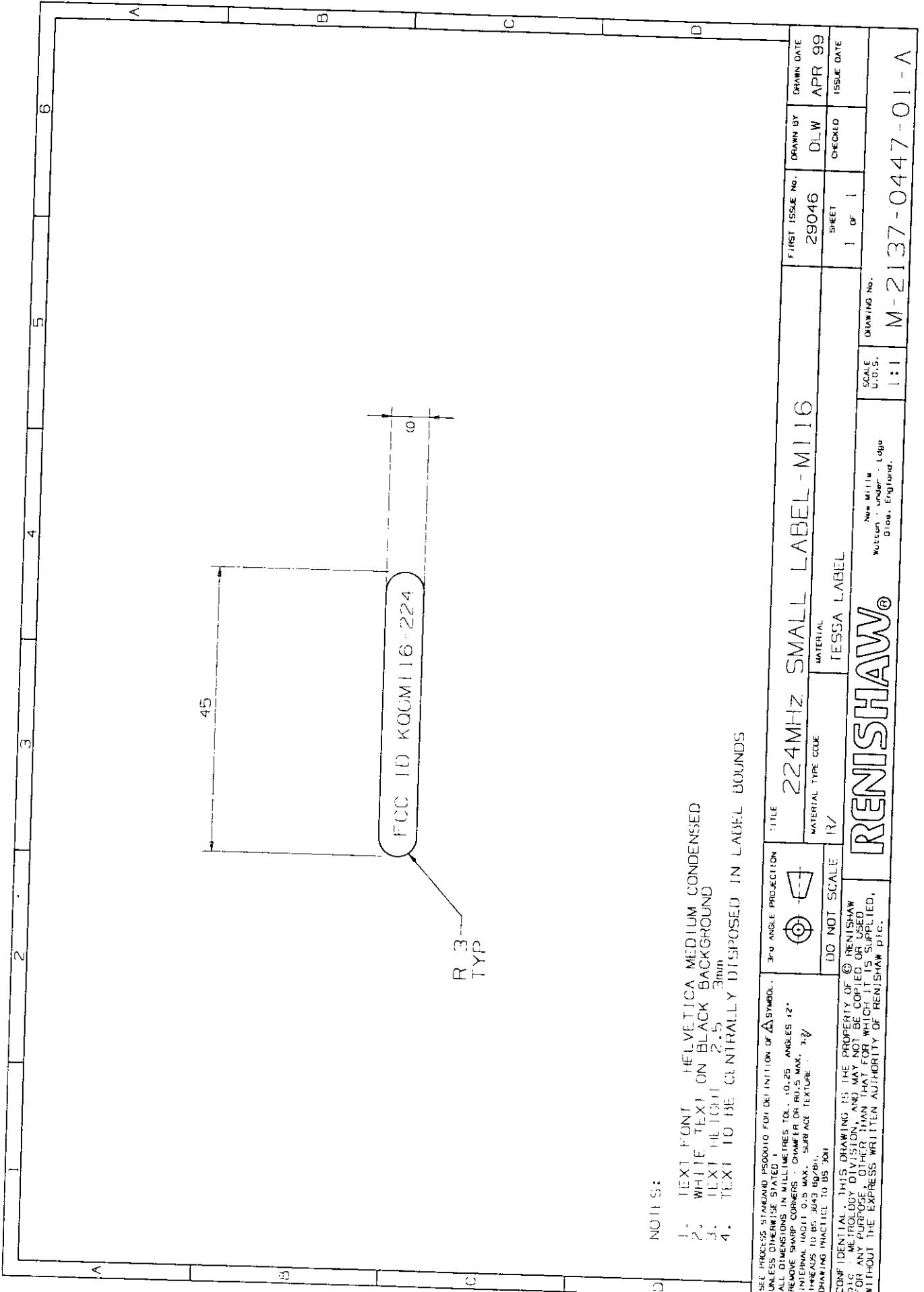
**RENISHAW**<sup>®</sup>

New Mills  
 Wotton - Warwick - Copp  
 Clontarf, England.

SCALE  
 U.O.S.  
 1:1

DRAWING No.

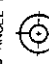
M-2137-0446-01-A



NOTES:

1. TEXT FONT - HELVETICA MEDIUM CONDENSED
2. WHITE TEXT ON BLACK BACKGROUND
3. TEXT HEIGHT - 2.5mm
4. TEXT TO BE CENTRALLY DISPOSED IN LABEL BOUNDS

SEE PROCESS STANDARD PRODUKIO FOR DEFINITION OF SYMBOLS.  
 UNLESS OTHERWISE STATED, ALL DIMENSIONS IN MILLIMETRES TO 0.25 ANGLES 12°.  
 REMOVE SHARP CORNERS - CHAMFER OR RADIUS MAX. 1/2.  
 INTERNAL RADIUS 0.5 MAX. SURFACE TEXTURE 3.2.  
 THREADS TO BS 3643 ISO/21.  
 DRAWING PRACTICE TO BS 3081

3RD ANGLE PROJECTION  
  
 DO NOT SCALE  
 R/

TITLE  
 224MHz SMALL LABEL - M116  
 MATERIAL  
 TESSA LABEL

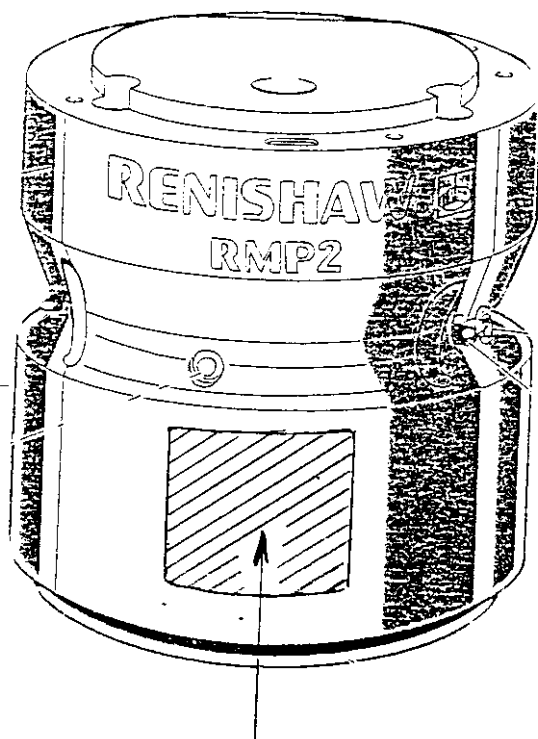
|                 |        |          |     |            |        |
|-----------------|--------|----------|-----|------------|--------|
| FIRST ISSUE No. | 29046  | DRAWN BY | DLW | DRAWN DATE | APR 99 |
| SHEET           | 1 OF 1 | CHECKED  |     | ISSUE DATE |        |

CONFIDENTIAL - THIS DRAWING IS THE PROPERTY OF RENISHAW PLS. RETURN TO DIVISION, AND MAY NOT BE COPIED OR USED FOR ANY PURPOSE OTHER THAN THAT FOR WHICH IT IS SUPPLIED, WITHOUT THE EXPRESS WRITTEN AUTHORITY OF RENISHAW PLS.

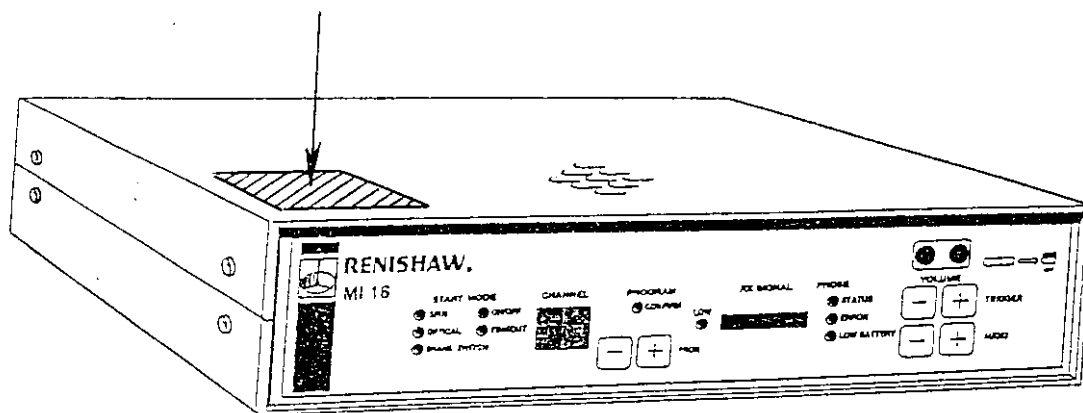
**RENISHAW®**  
 New Mill  
 Wotton - Under - Loge  
 Oxon, England.

SCALE  
 U.O.S.  
 1:1  
 DRAWING No.  
 M-2137-0447-01-A

LABELS CERTIFICATION LOCALISATION ON RMP2 AND MI16



FCC ID: KQG RMP2-224



FCC ID: KQG MI16-224