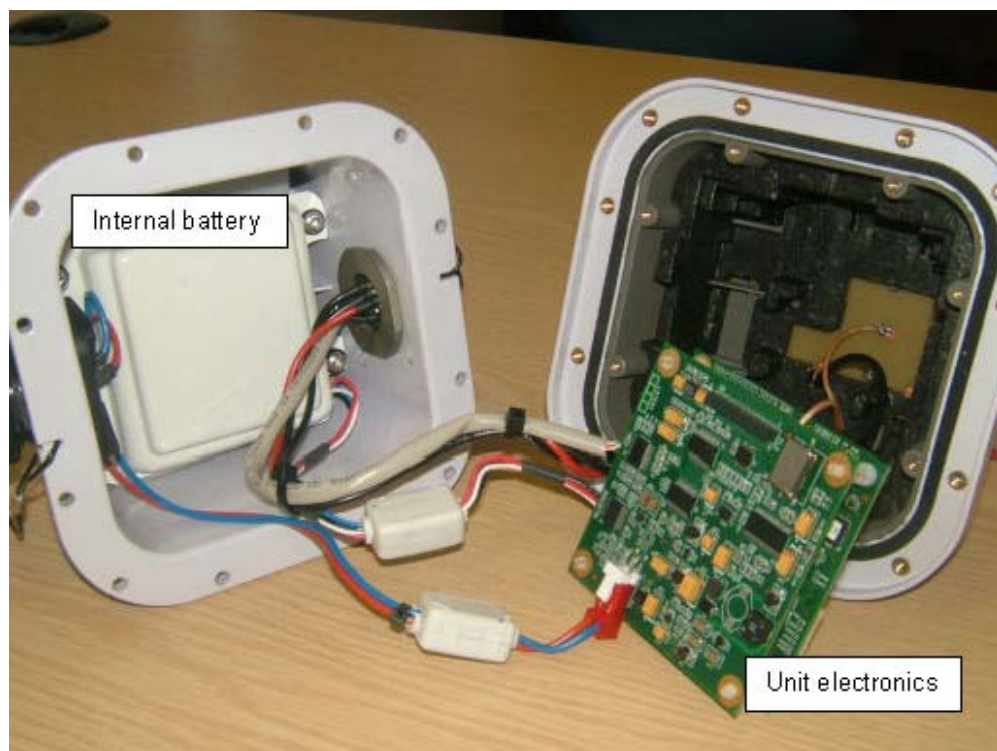
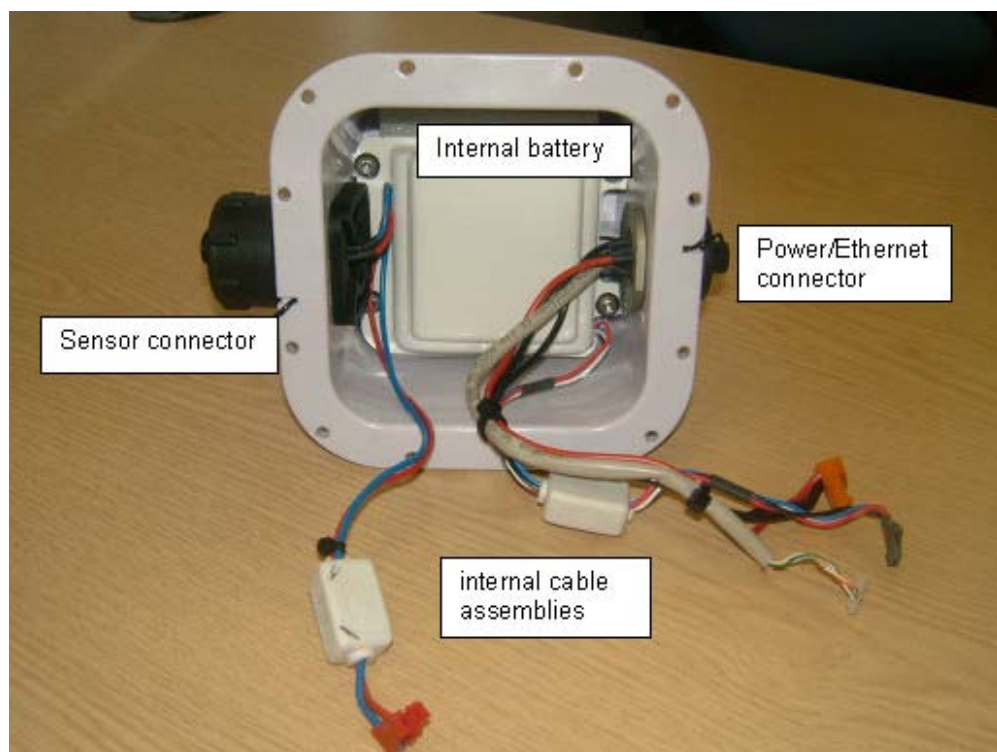


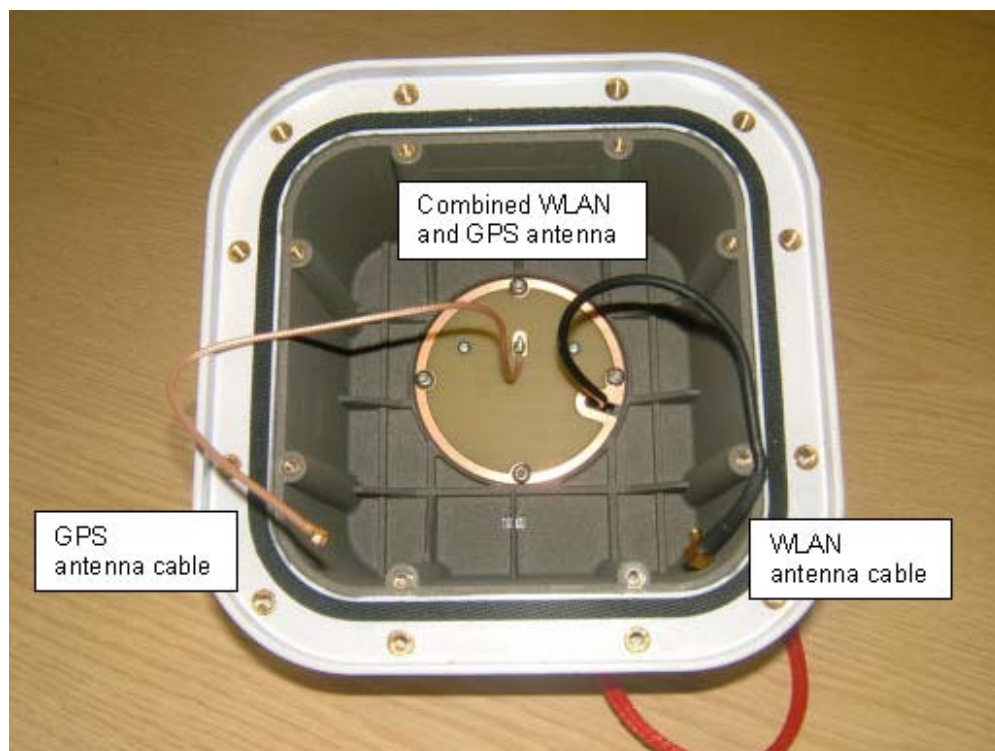
Unite EMC midplate (and retaining foam) removed from top section



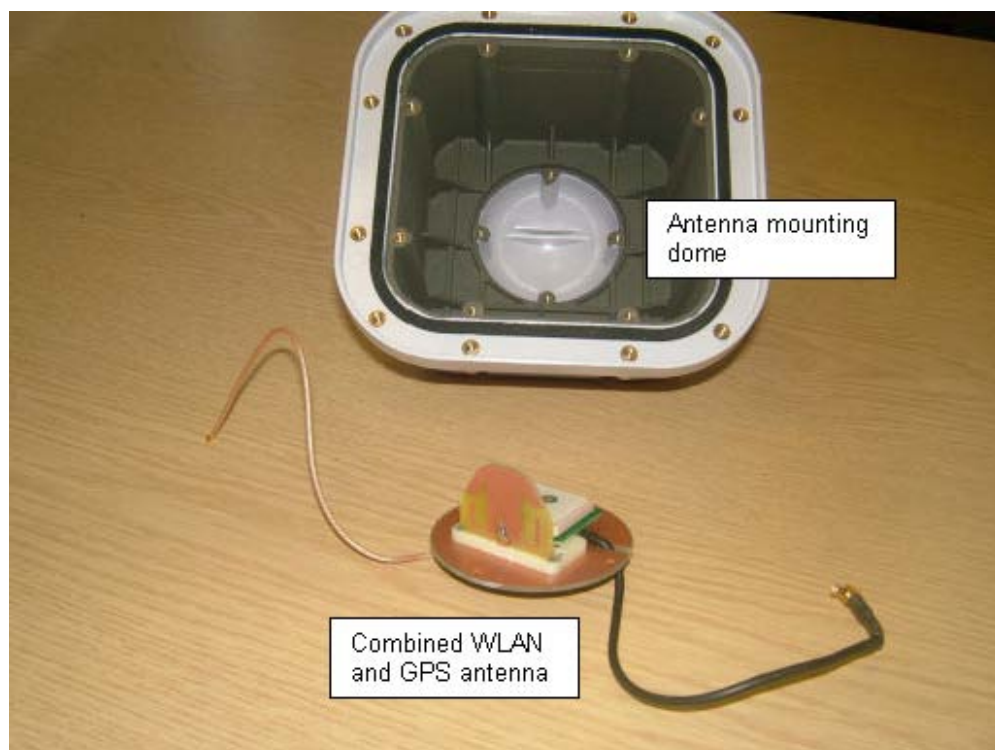
Unite electronics removed from top section



Unite base section showing internal battery and cable assemblies

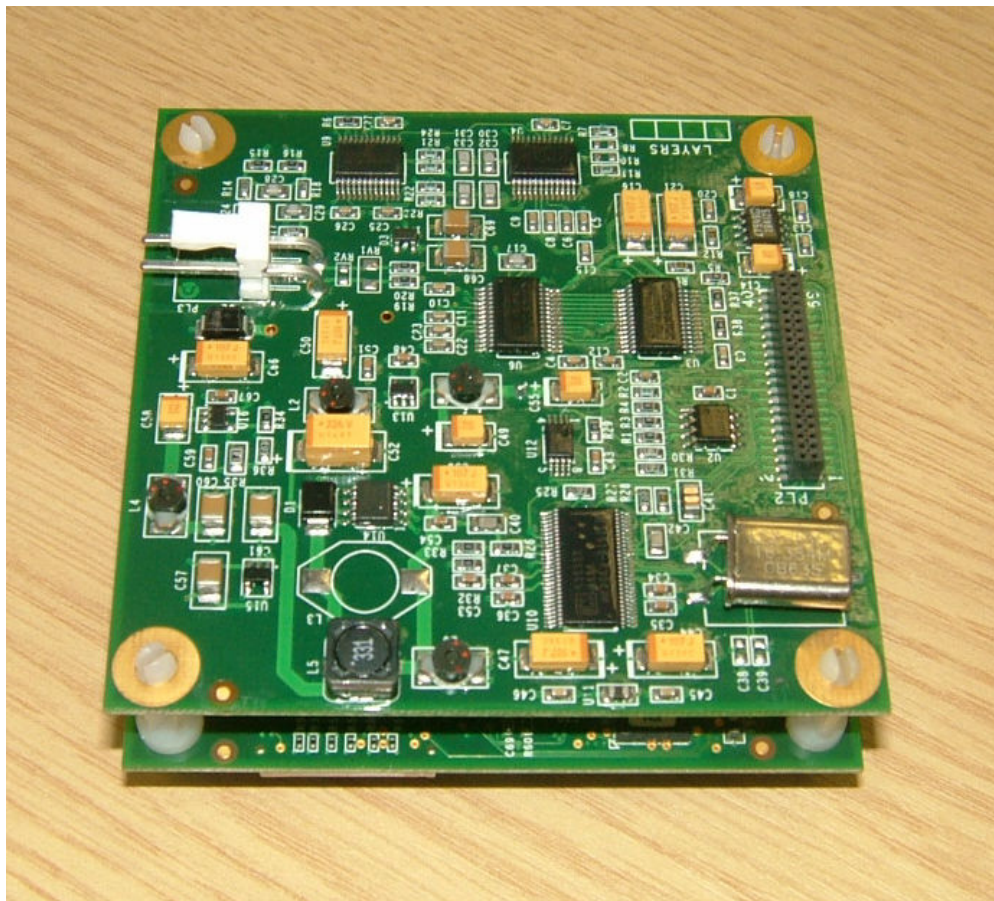


Unite top section (electronics removed) showing antenna mounted within dome



Unite top section (electronics removed) with WLAN/GPS antenna removed from dome





Unite electronics

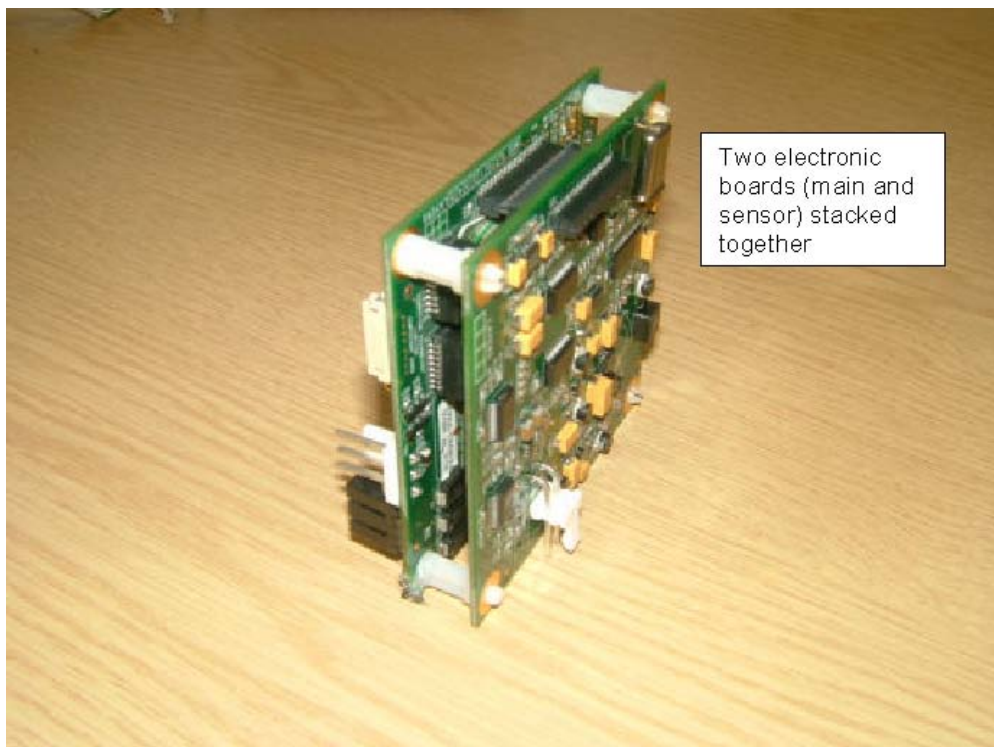


Figure 10 : Unit electronics (stacked)



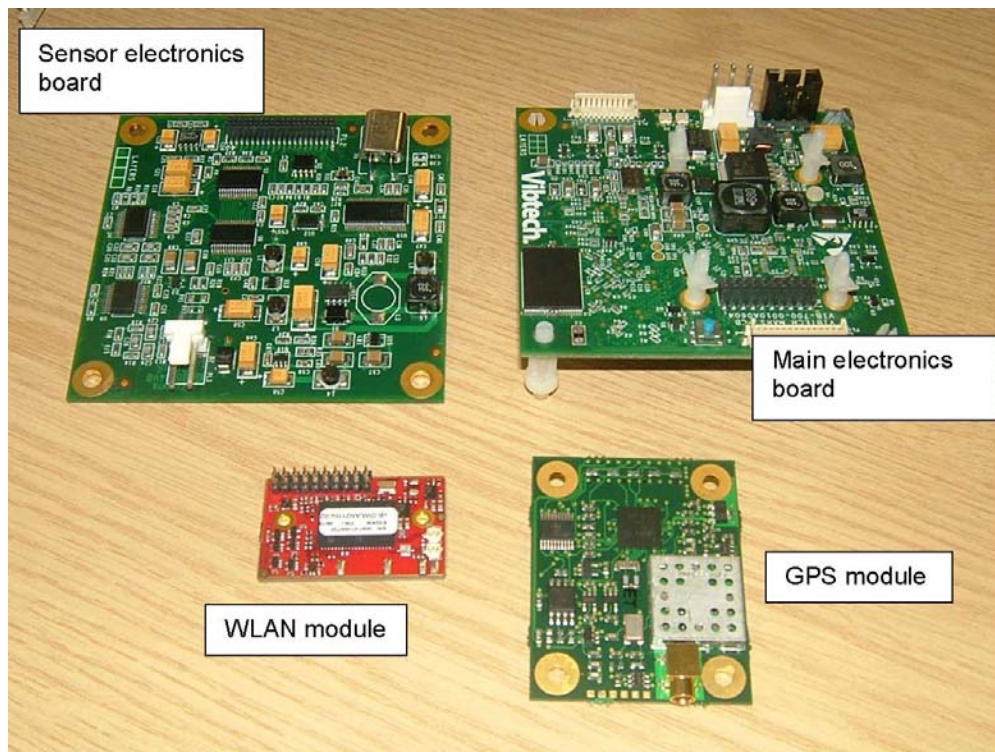


Figure 11 : Unite electronics (individual)

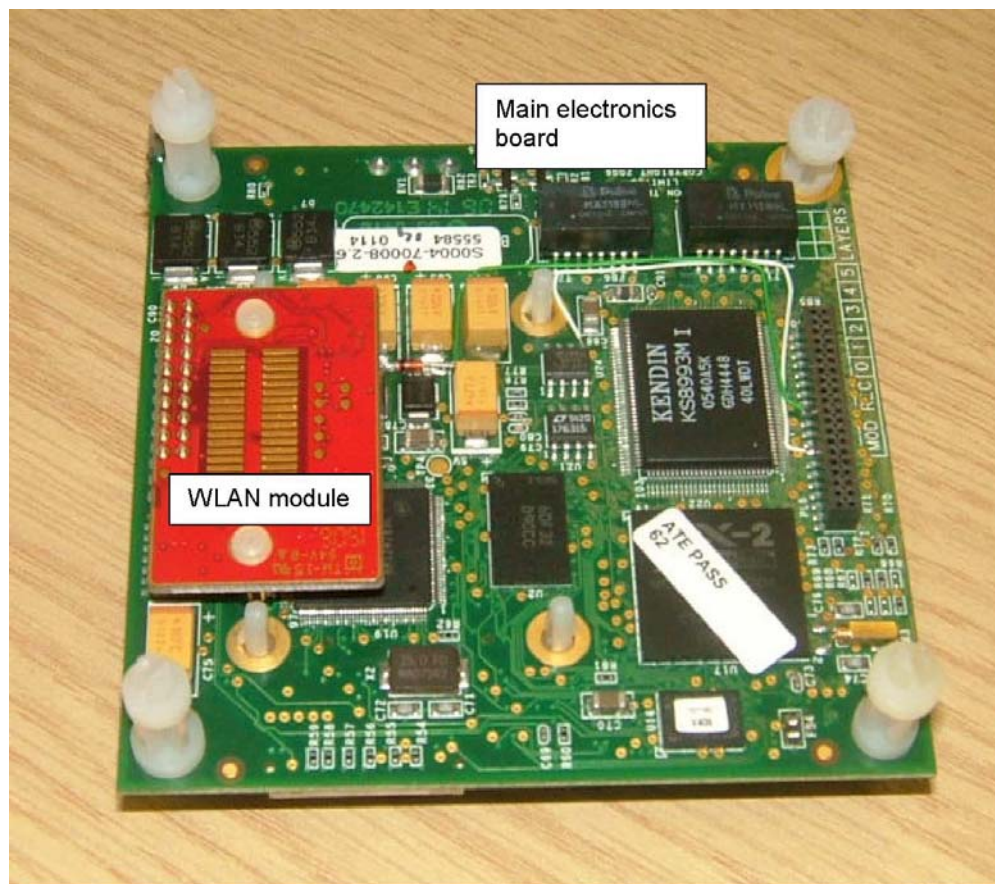


Figure 12 : Unite main board with mounted WLAN module

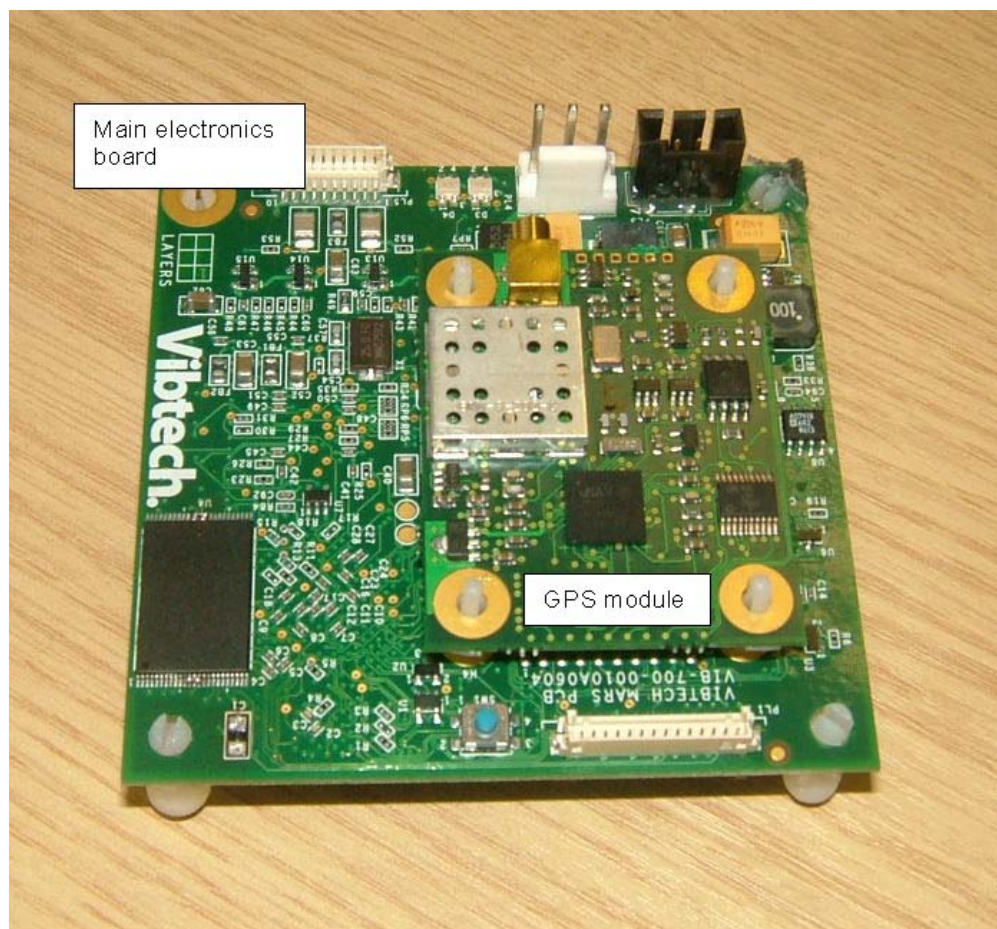


Figure 13 : Unite main board with mounted GPS module