

Photo 1. REM enclosure front view.

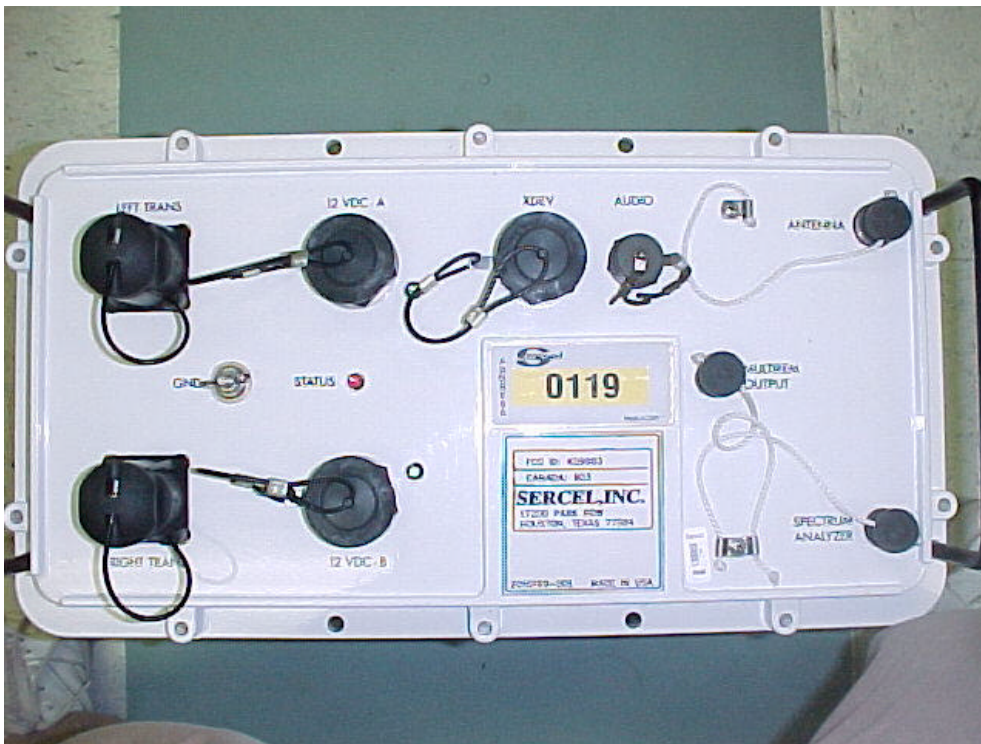


Photo 2. REM front panel.

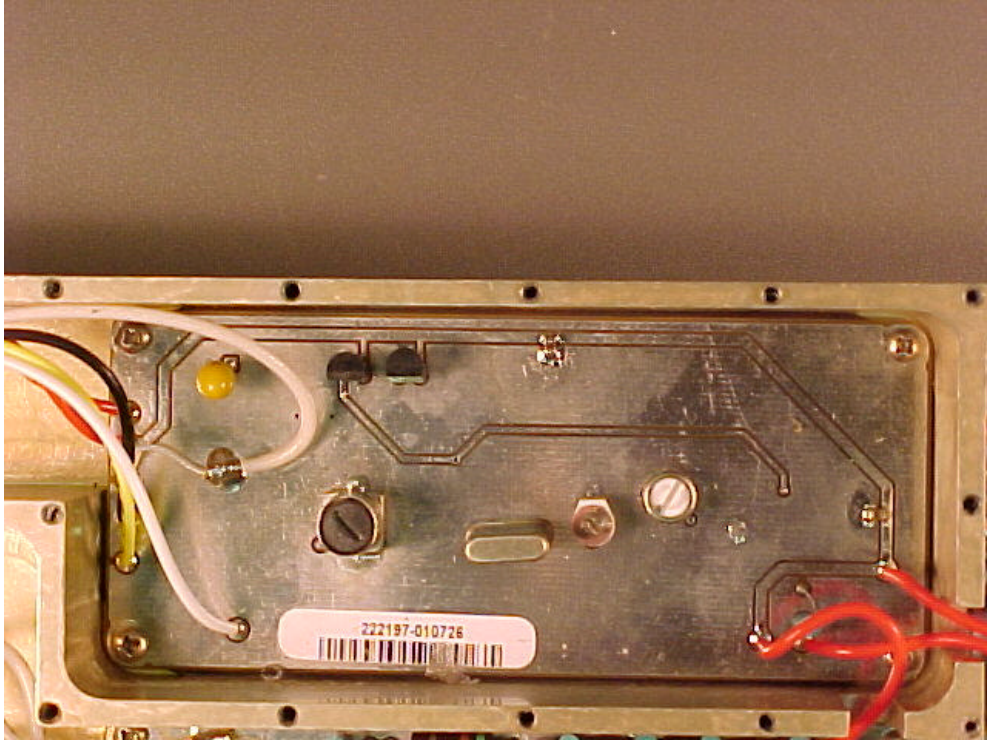


Photo 3. Reference Oscillator, top view.

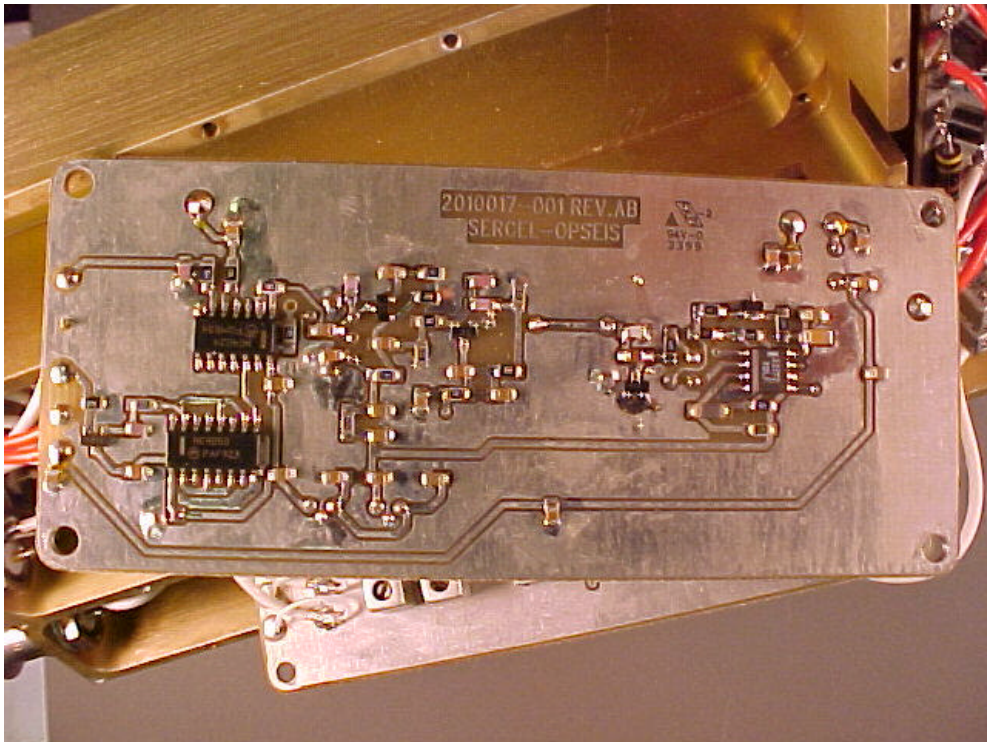


Photo 4. Reference Oscillator, bottom view.



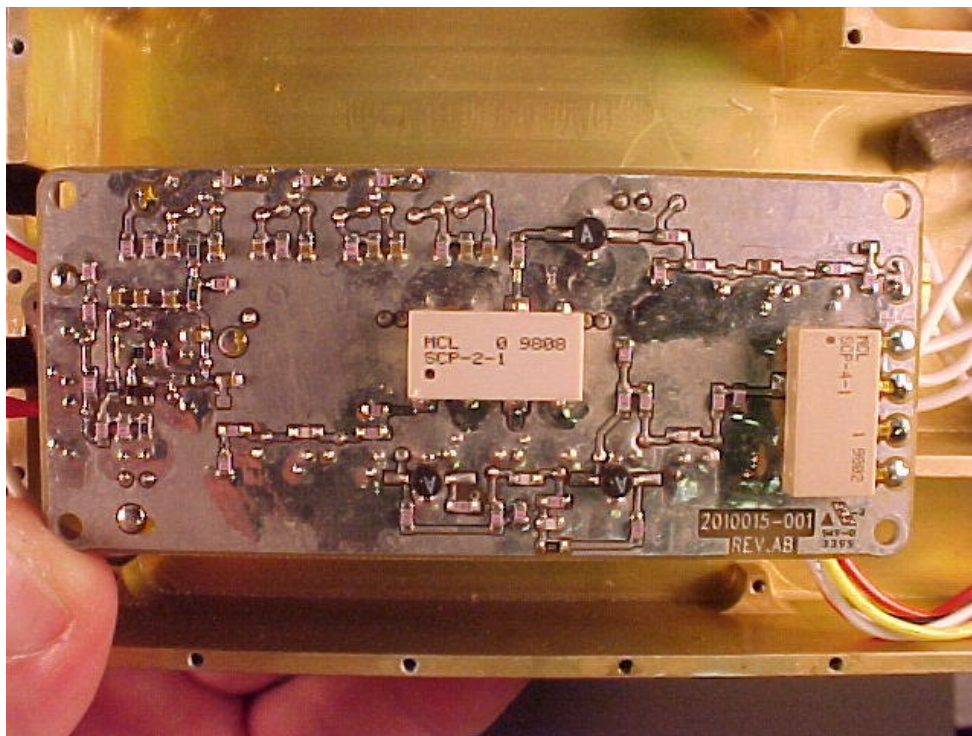


Photo 5. T/R Switch & Preamp, top view.

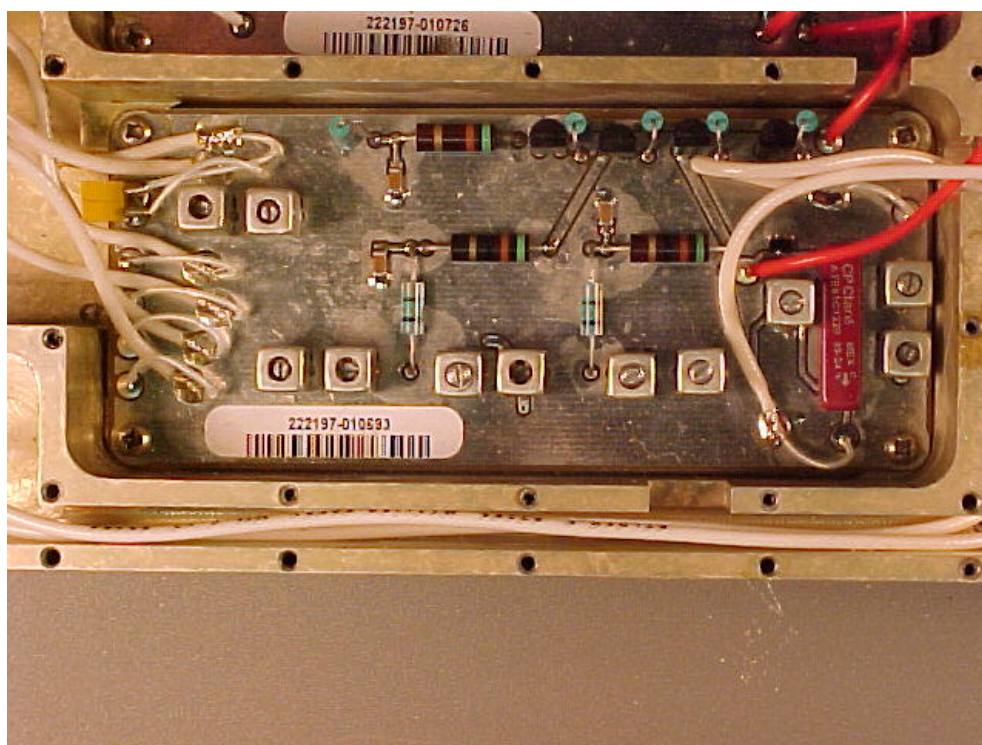


Photo 6. T/R Switch & Preamp, bottom view.



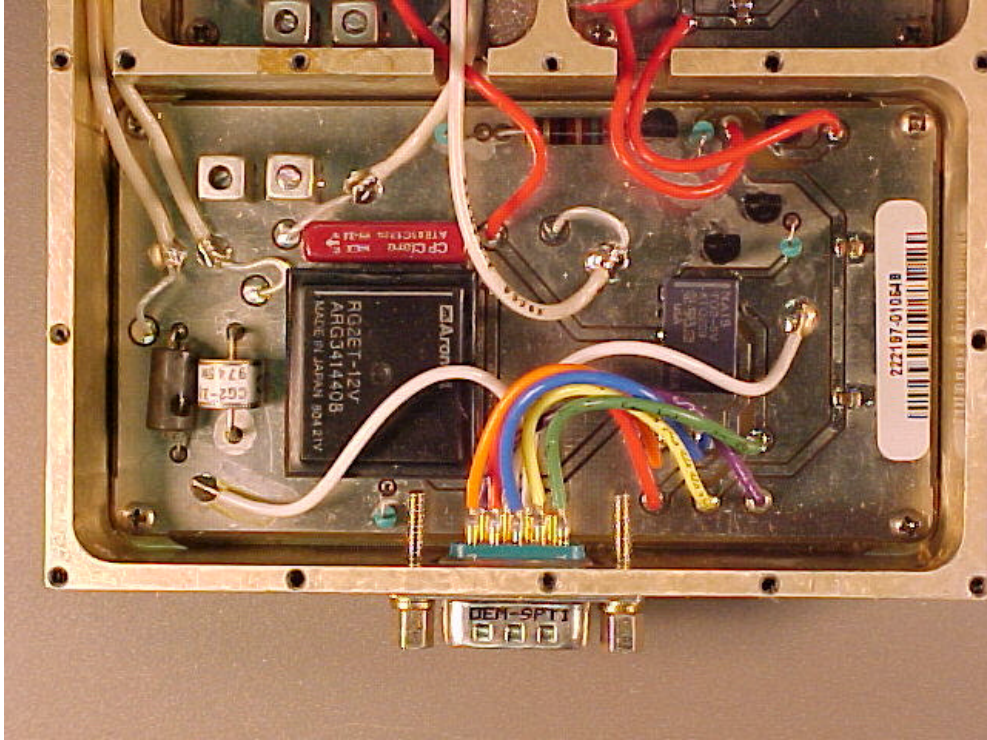


Photo 7. T/R Switch Controller, top view.

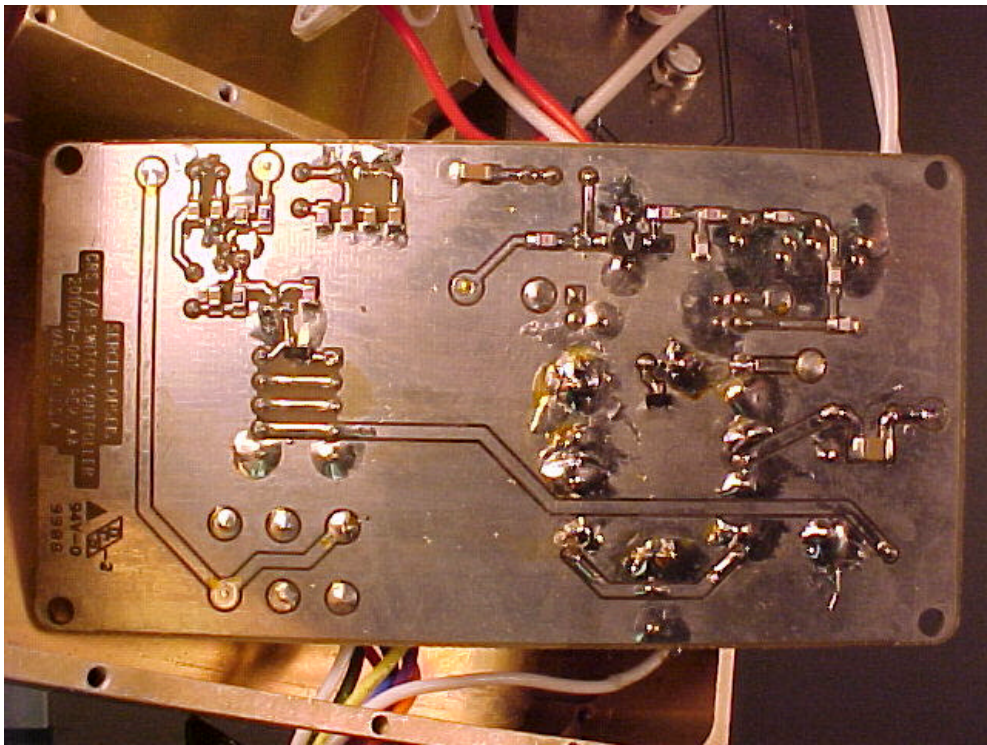


Photo 8. T/R Switch Controller, bottom view.