

Exhibit _ interior of DUT MDT-B (figures 5 -10).

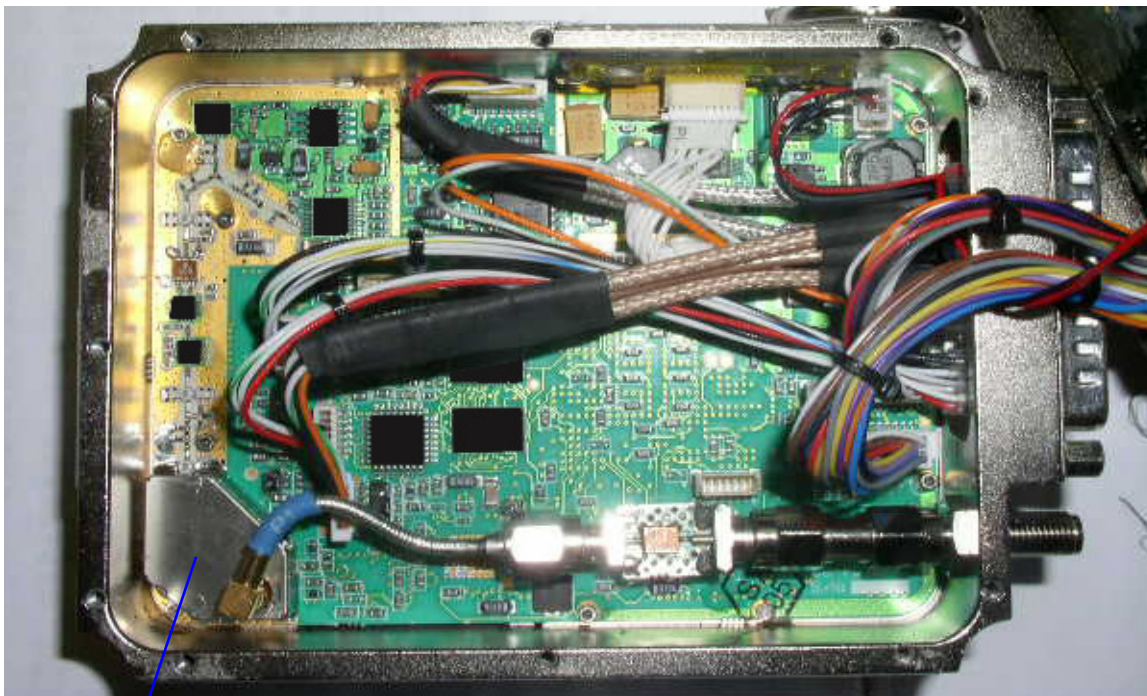


Figure 5 – Interior bottom half (component side) Tx Board assembly



Without Shield

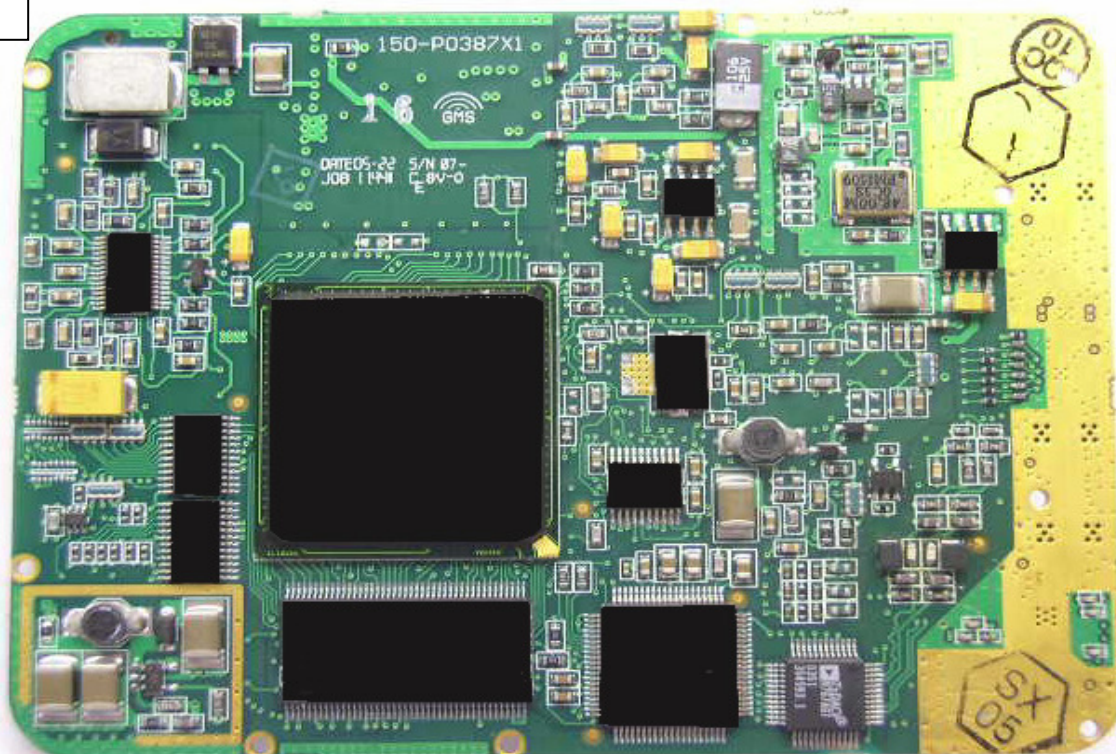


Figure 6 – Interior bottom half (solder side) Tx Board assembly

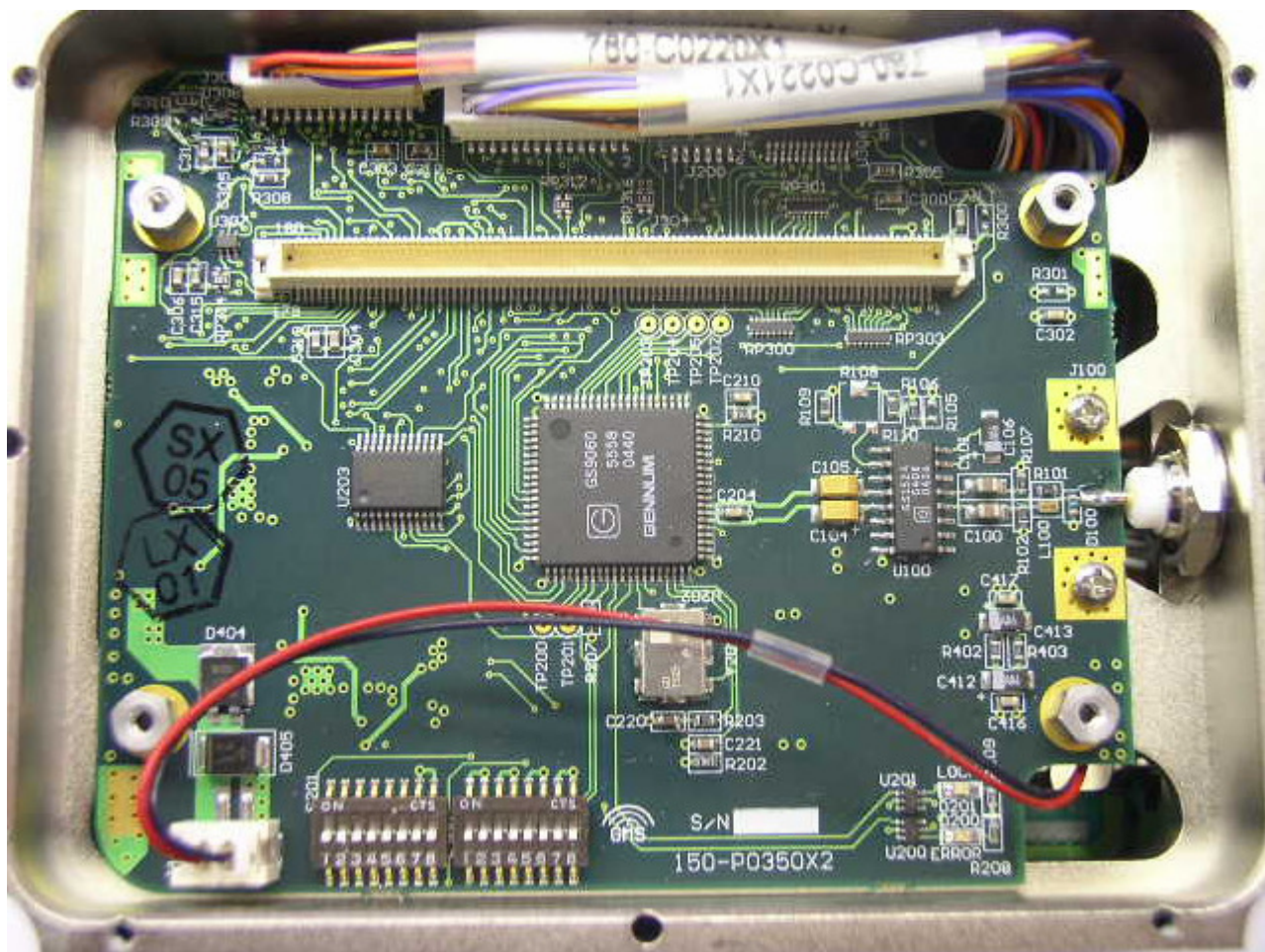


Figure 7 – Interior top half (component side) SDI board assembly



Figure 8 – Interior top half (solder side) SDI board assembly

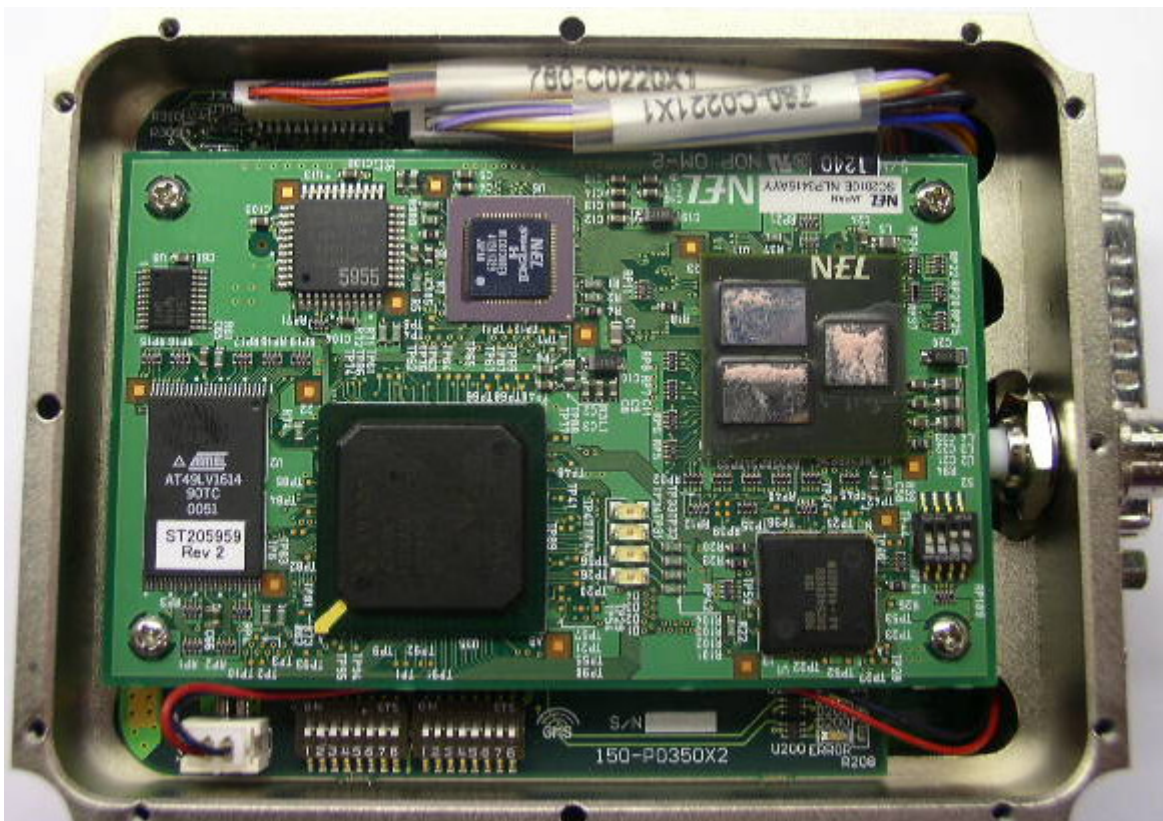


Figure 9 – Interior top half (component side) encoder assembly

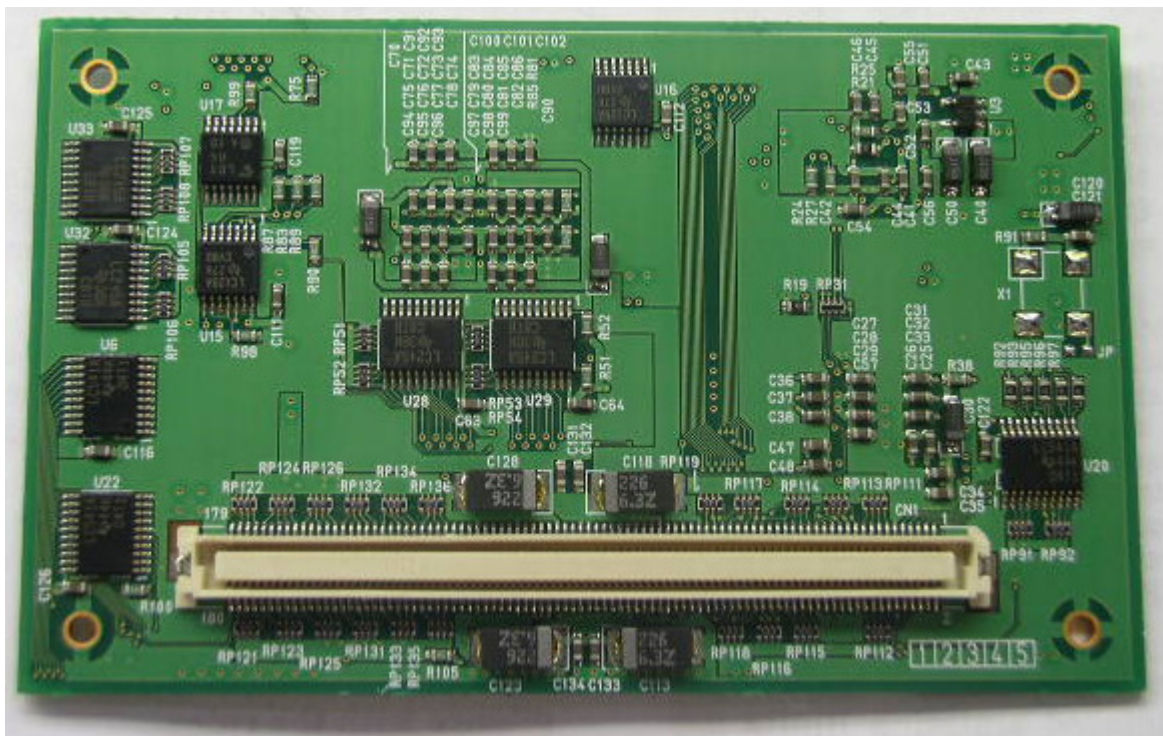


Figure 10 – Interior top half (solder side) encoder assembly