

1. ID Label

The FCC ID and IC ID are on a label which is located on the top of the module housing.

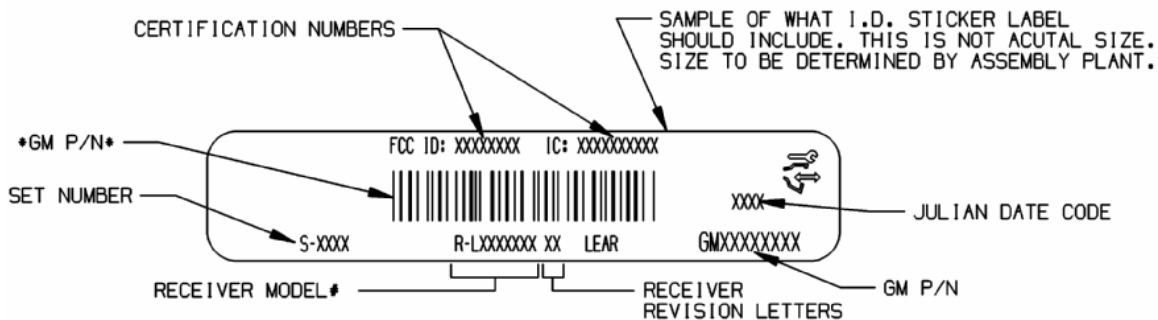
The statements of compliance are molded into the top side of the module housing. The label information shown below will be molded into the top side on the plastic housing of the receiver module:

This device complies with Part 15 of the FCC Rules and with RSS-210 of the Industry Canada.
 Operation is subject to the following two conditions:

- (1) This device may not cause harmful interference, and
- (2) This device must accept any interference received, including interference that may cause undesired operation.

2. ID Label Drawing / Location

An ID label will be placed below the compliance statement (shown above). The label has the OEM and Module Manufacturer information. The module part number label is located below the FCC ID and IC ID. The statements of compliance are molded into the top side of the module housing.



FCC ID: **KOBGR08B**

IC: **3521A-R08B**

GM P/N: 25804469 (external antenna)
 25804470 (internal antenna)

Receiver Model # 5E0070217 (external antenna)
 5E0070117 (internal antenna)

THIS DEVICE COMPLIES WITH THE FCC RULES PART 15 AND WITH RSS-210 OF INDUSTRY CANADA. OPERATION IS SUBJECT TO THE FOLLOWING TWO CONDITIONS:
1) THIS DEVICE MAY NOT CAUSE HARMFUL INTERFERENCE, AND
2) THIS DEVICE MUST ACCEPT ANY INTERFERENCE RECEIVED, INCLUDING INTERFERENCE THAT MAY CAUSE UNDESIRABLE OPERATION.

FCC ID:

4457



IC:



GM15212377

> ABS <

MADE IN U.S.A.